

Recessed Downlighting

RL wireless controlled LED retrofit downlight

HALO



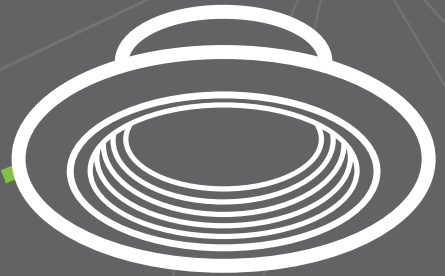
Install. Connect. Control.



EATON

Powering Business Worldwide

How does it work?



Halo LED Downlight
wireless controlled

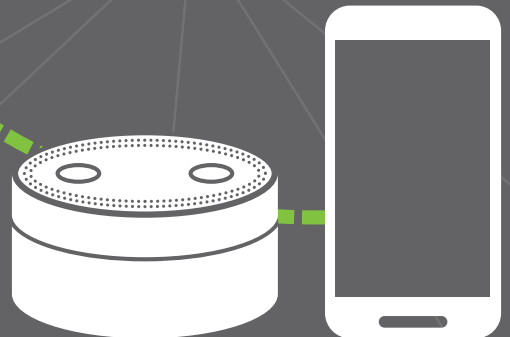


Hub

- Compatible with Wink Hub 2 and SAMSUNG SmartThings
- Works with Echo Plus with built-in hub

4 Easy Steps

1. Install light fixture into ceiling.
2. Open Wink, SmartThings or Echo Plus App.
3. Add the smart device to the Hub.
4. Control your lighting.



Smart device
Virtual assistant or
smart device



Color adjustment

- Adjust color temperature (CCT) from 2700K (warm) to 5000K (cool) using the hub app.
- Maintains 90 CRI throughout color adjustment.
- Factory default 3000K.

Automate and control lighting remotely

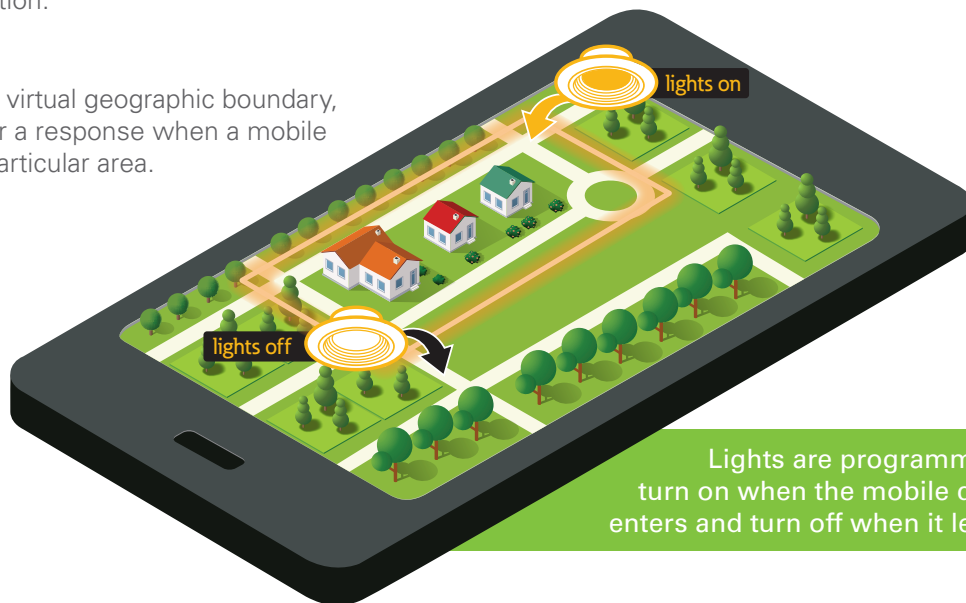
Set automations or scheduled actions through the hub app. Use geo-fencing to have the light perform commands based on your phones location.

Geo-fencing

The use of GPS to create a virtual geographic boundary, enabling software to trigger a response when a mobile device enters or leaves a particular area.

ON/OFF functions

Perform ON/OFF functions from anywhere.



Lights are programmed to turn on when the mobile device enters and turn off when it leaves.

The RL4 & RL56 Wireless can perform dimming, white tuning, scheduling, grouping, geo-fencing, automations and remote access through any mobile device in a ZigBee® based system.



DIMMABLE

Set the mood

The downlight will dim to 5% using the hub app. Do not connect the downlight to a wall dimmer.

Existing wall switch must remain on or use 3rd party cover plate.



GROUPING

Create scenes by grouping

Choose multiple Halo RL wireless downlights and control them all together using the hub app.



SCHEDULING

Light scheduling while you're away

Create a schedule within the app for individual products or groups of products.

Uses ZigBee

Allows the RL downlight to be controlled by a smart device and hub (both required and sold separately.)

What is ZigBee?

Zigbee is the language of connected products in homes and businesses. It is in innovative products that provide new ways to use light, improve comfort and convenience, and save energy.

Zigbee allows consumers easy-to-use control over all their LED fixtures. Products based on Zigbee let consumers change lighting remotely to reflect ambiance, task or season, all while managing energy use and making their homes greener.

- Compatible with Wink and SAMSUNG SmartThings.
- Works directly with Echo Plus with built-in hub.



ZigBee®

Certified product



Echo Plus



RL560WHZHA69 RL56 wireless LED baffle-trim module



RL560WHZHA69

5 5/8" Retrofit LED Module, Zigbee HA, 90CRI, Matte White

Module	Finish	Protocol	Lumens	CRI
RL560= 5 5/8" Retrofit Baffle Trim, LED Module, Zigbee wireless, 90CRI, Tunable White 2700K - 5000K	WH=Matte White	ZHA=ZigBee Home Automation	6=600 lumens (nominal)	9=90 CRI

Accessories (order separately)

Designer Trim Rings

RL56TRMSN=Satin Nickel Trim Ring

RL56TRMTBZ=Tuscan Bronze Trim Ring

RL56TRMMWH=White Paintable Trim Ring

OT400P=Oversize Flat White Metal Trim Ring, 6" I.D. x 9-1/4" O.D. (Ring slips behind RL56 ring in stepped configuration.)

OT403P=Oversize White Plastic Trim Ring, 6" I.D. x 8" O.D. (Ring slips behind RL56 ring in stepped configuration.)

TRM690WH=Oversize Matte White Metal Trim Ring. Designed for RL56 ring to inset into oversize ring for an even (non-stepped) trim surface.

HE26LED=Replacement screw base adapter (one included with unit)

Designer Trim Rings - baffles

RL56TRMSNB=Satin Nickel Trim Ring, Baffle

RL56TRMTBZB=Tuscan Bronze Trim Ring, Baffle

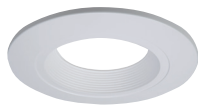
RL56TRMMWHB=White Paintable Trim Ring, Baffle



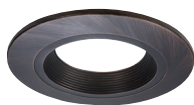
HE26LED
E26 Screw base adapter for retrofit (included)

RL56 Designer Trims

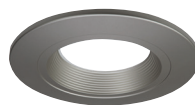
(order separately)



RL56TRMWH
RL56TRMWHB
White (Paintable)



RL56TRMTBZ
RL56TRMTBZB
Tuscan Bronze



RL56TRMSN
RL56TRMSNB
Satin Nickel



Refer to ENERGY STAR® Qualified Products List. Can be used to comply with California Title 24 High Efficacy requirements. Certified to California Appliance Efficiency Database under JAB.

Rated for installation in 5" and 6" HALO® and other housings.

Halo 5" LED*	H550ICAT, H550RICAT, E550ICAT, E550RICAT
Halo 6" LED*	H750ICAT, H750RICAT, H750T, H750RINTD010, H750TCP, H2750ICAT, H2750RICAT, E750ICAT, E750RICAT
Halo 5"	H5ICAT, H5RICAT, H5ICATNB, H5T, H5RT, H25ICAT, H25ICATNB, E5TAT, E5RTAT, H5TNB, E5TATNB, E5ICAT, E5RICAT, E5ICATNB
Halo 6"	H7ICAT, H7RICAT, H7ICT, H7RICT, H7ICATNB, H7ICTNB, H7T, H7RT, H7TNB, H7TCP, H7UICAT, H7UICAT, H27ICAT, H27RICAT, H27T, H27RT, E7ICAT, E7RICAT, E27ICAT, E27RICAT, E7ICATNB, E7TAT, E7RTAT, E7TATNB, E27TAT, E27RTAT
Halo LED Retrofit	ML7BXRFK, ML7E26RFK
Other Brands^Δ	The RL56 is UL Certified in Halo recessed housing and for use with any 5 5/8" diameter recessed housing constructed of steel or aluminum with an internal volume that exceeds 107.9 in ³ in addition to those noted above.

* Halo LED housings are non-screw base, high-efficacy code compliant.

^Δ When using with RL56 torsion springs for retrofit, some housings will not have torsion spring receiver brackets. Use Halo ML7RAB retrofit adapter band (ordered separately).

RL460WHZHA69 RL4 wireless LED baffle-trim module



RL460WHZHA69

4" Retrofit LED Module, Zigbee HA, 90CRI, Matte White

Module	Finish	Protocol	Lumens	CRI
RL460= 4" Retrofit Baffle Trim, LED Module, Zigbee wireless, 90CRI, Tunable White 2700K - 5000K	WH=Matte White	ZHA=ZigBee Home Automation	6=600 lumens (nominal)	9=90 CRI

Accessories (order separately)

Designer Trim Rings

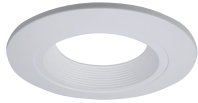
RL4TRMSN=Satin Nickel Trim Ring
 RL4TRMTBZ=Tuscan Bronze Trim Ring
 RL4TRMMWH=White Paintable Trim Ring
 HE26LED=Replacement screw base adapter (one included with unit)

Designer Trim Rings - baffles

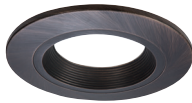
RL4TRMSNB=Satin Nickel Trim Ring, Baffle
 RL4TRMTBZB=Tuscan Bronze Trim Ring, Baffle
 RL4TRMMWHB=White Paintable Trim Ring, Baffle



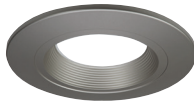
RL4 Designer Trims (order separately)



RL4TRMWH
RL4TRMWHB
White (Paintable)



RL4TRMTBZ
RL4TRMTBZB
Tuscan Bronze



RL4TRMSN
RL4TRMSNB
Satin Nickel



Refer to ENERGY STAR® Qualified Products List. Can be used to comply with California Title 24 High Efficacy requirements. Certified to California Appliance Efficiency Database under JA8.

Rated for installation in 4" HALO®, All-Pro™ and other housings.

Halo 4" LED*	H995ICAT, H995RICAT, H245ICAT, H245RICAT
Halo 4"	H991CAT, H991TAT, H991RTAT, E41CATSB, E41TATSB, E41RTATSB
Other Brands	The RL4 is UL Certified in Halo recessed housing and for use with any 4" diameter recessed housing constructed of steel or aluminum with an internal volume that exceeds 62.3 in ³ in addition to those noted above.

* Halo LED housings are non-screw base, high-efficacy code compliant.

Lighting Product Lines

Halo
Halo Commercial
Portfolio
Iris
RSA
Metalux
Corelite
Neo-Ray
Fail-Safe
MWS
Ametrix
Shaper
io
Lumark
McGraw-Edison
Invue
Ephesus
Lumière
Streetworks
AtLite
Sure-Lites

Our Controls Product Lines

Greengate
iLumin
Zero 88
Fifth Light Technology
iLight (International Only)

Connected Lighting Systems

LumaWatt Pro
WaveLinx
Distributed Low-Voltage Power
ConnectWorks

Eaton
1121 Highway 74 South
Peachtree City, GA 30269
P: 770-486-4800
www.eaton.com/lighting

Canada Sales
5925 McLaughlin Road
Mississauga, Ontario L5R 1B8
P: 905-501-3000
F: 905-501-3172

© 2017 Eaton
All Rights Reserved
Printed in USA
Publication No. BR518042EN
October 2017

Eaton is a registered trademark.

All other trademarks are property
of their respective owners.

Product availability, specifications,
and compliances are subject to
change without notice.