

PHILIPS
Stonco

Wall mount

LytePro LED Sconce

LPW16



Project:

Location:

Cat.No:

Type:

Quantity:

Notes:

The Philips Stonco LytePro LED Small Wall Sconce LPW16 features outstanding value in a compact, architectural design. This wall sconce features state-of-the-art, long-life and maintenance savings, in a combined discreet LED package with high precision over-optic design. This powerful and precise combination offers outstanding energy savings with excellent photometric performance. LPW16 is ideal for entryways and corridors in addition to wall lighting applications requiring strong lateral spacing and forward pattern projection.

Stocked luminaires – Ordering guide¹

| Catalog Number | Description | Master Pack, Qty | UPC Code |
|----------------------|---|------------------|--------------|
| LPW16-58BZ | LPW16, 30W, 530mA, 4000K, 120-277V, Bronze textured paint | 6 | 786034960540 |
| LPW16-51BZPCB | LPW16, 30W, 530mA, 4000K, 120V, Bronze textured paint, w/button photocell | 6 | 786034960557 |
| LPW16-78BZ | LPW16, 40W, 700mA, 4000K, 120-277V, Bronze textured paint | 6 | 786034960502 |
| LPW16-78DGY | LPW16, 40W, 700mA, 4000K, 120-277V, Dark gray textured paint | 6 | 786034960489 |
| LPW16-71BZPCB | LPW16, 40W, 700mA, 4000K, 120V, Bronze textured paint, w/button photocell | 6 | 786034960519 |

Stocked accessories – Ordering guide (Must be ordered separately)

| Catalog Number | Description | Master Pack, Qty | UPC Code |
|---------------------|--|------------------|--------------|
| LPWCVRPLT-BZ | LPW Universal wall cover mounting plate, Bronze textured paint | (none) | 786034960618 |

Description of catalog codes

| Family | Drive current | Voltage | Finish | Options |
|--|--|--------------------------|--|---------------------------|
| LPW16 = LytePro 16 LED Small Wall Sconce | 5 = 530mA drive current 7 = 700mA drive current | 8 = 120-277V 1 = 120V | BZ = Bronze textured paint DGY = Dark gray textured paint | PCB = Button photocontrol |

1. Color availability and options vary by model; consult stock luminaires ordering guide above.

LPW16 LytePro LED Small Wall Sconce

Features

LPW16 wall sconce delivers 3,374 lumens at 36W, with an efficacy of 93 lumens per watt. Other wattages available per charts noted below--.

- LP16W-5, 30W LED may effectively replace 70-100W HID luminaires²
- LP16W-7, 40W LED may effectively replace 100-150W HID luminaires¹
- 4000K neutral white at 70 CRI (minimum) is standard
- LPW16 offers two in-stock colors on standard units
- Button photocell available in 120V, bronze luminaires only
- 5-year limited warranty, see philips.com/warranties for specific details

Performance/Specifications (LP16W-7)

| | |
|------------------|---------------|
| Distribution | Type 3 |
| Initial Lumens | 3,374 |
| Average Wattage | 36 |
| Lumens/Watt | 93 |
| BUG Rating* | B1/U0/G1 |
| Luminaire Weight | ~6lbs (2.7Kg) |

Performance/Specifications (LP16W-5)

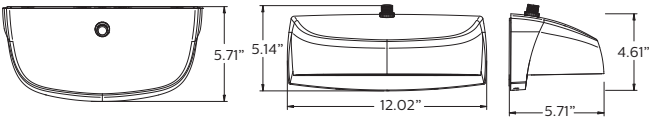
| | |
|------------------|---------------|
| Distribution | Type 3 |
| Initial Lumens | 2,698 |
| Average Wattage | 28 |
| Lumens/Watt | 96 |
| BUG Rating | B1/U0/G1 |
| Luminaire Weight | ~6lbs (2.7Kg) |

Ratings/Approbations/Certifications

| | |
|---------------------------|------------------------------------|
| Ingress Protection | IP65 Optical |
| DLC Listed | DLC QPL |
| cETLus | Certified for use in wet locations |
| Rated Ambient Temperature | -40°C (-40°F) to 40°C (104°F) |

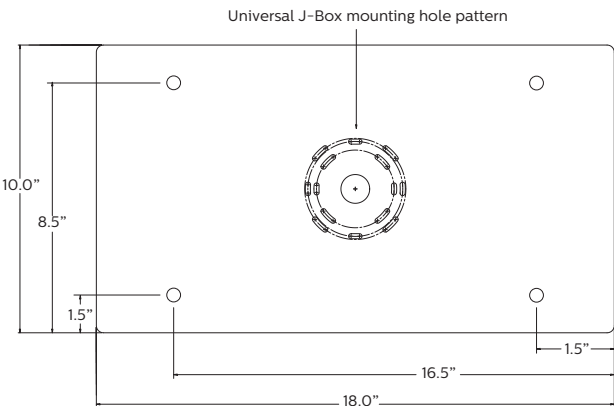
2. Comparable equivalency to HID and other lamp sources depends on multiple criteria including mounting height, fixture spacing, efficiency, performance and classification of the luminaire being replaced and application lighting criteria required for the given project.
3. PCB shown for placement only, available on specific models only (see ordering guide).

Fixture Dimensions³



Accessory Dimensions (ordered separately)

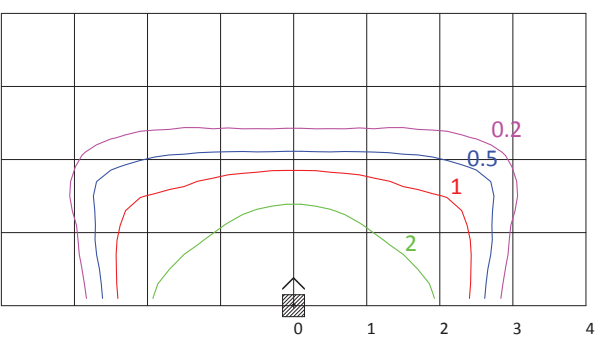
LPWCVRPLT-BZ LPW Universal wall cover mounting plate, 0.08" aluminum, bronze textured paint (used to cover larger pre-existing opening or surfaces, field installed). Offers same J-Box pattern as luminaire or may lagged to wall using (4) knockouts.



Distribution Pattern

| LPW16-7 10' MOUNTING HEIGHT | | | |
|-----------------------------|------|-----|------|
| MOUNTING HEIGHT | 8' | 10' | 12' |
| MULTIPLIER | 1.60 | 1.0 | 0.70 |

- Isolines shown at 2.0, 1.0, 0.5, & 0.2 FC.
- Choose mounting height. Use MULTIPLIER (X) EXISTING FC VALUE = NEW FC VALUE.
- FC values are based on initial lumen output.
- Gridline spacing is in units of chosen mounting height
- For LPW16-5 configuration, scale down by 29%.



LPW16 LytePro LED Small Wall Sconce

General Description

The Philips Stonco LytePro LED Small Wall Sconce LPW16 combines excellent performance, design and value to meet the needs of the energy and budget conscious. The LPW16 is available for use in downward facing, surface wall mount applications, over recessed j-boxes or where power can be directly fed through back surface, whereby connections splices can be made inside the luminaire housing. Five SKU's are available as in-stock configurations (2-day quick ship).

40W Model: Two standard units are available in two different finishes. 120V button photocell is available in bronze only. 30W Model: Standard units available in bronze only, with and without photocell. 30W model is California Title 24 compliant.

Housing

Die-cast housing houses both the LED and driver assemblies. Design incorporates an integrated heat sink to maximize thermal performance and reliability. Backplate is corrosion free, composite polycarbonate, with built-in level bubble, offers integral interlocking hook and mount design for easy installation.

Mounting

Easy interlocking hook and mount housing/backplate design for easy installation. Mounts over 3.5", 4" octagonal j-boxes and single gang switch boxes or can be directly lagged to surface. Ensure proper steps for gasket/sealing luminaire to surface.

IP Rating

Optical compartment is IP65 rated.

LED Board and Array

Provides up to 93 lm/W in LPW16-7 and 96 lm/W in LPW16-5 at the system level. Standard color temp is 4000K +/- 250K, minimum 70 CRI.

Electrical

Driver efficiency (>90% standard). 120-277V. Temp range: -40°C (-40°F) to 40°C (104°F). Open/short circuit protection. Inherent surge protection up to (4KVA). RoHS compliant.

Listings

Product is cETLus listed suitable for Wet Locations. Suitable for use in ambients from -40°C to 40°C (-40°F to 104°F). DesignLights Consortium® qualified. Stocked SKUs of the LPW family are made in China.

Finish

Each luminaire receives a fade and abrasion resistant, electrostatically applied, thermally cured, triglycidal isocyanurate (TGIC) textured polyester powdercoat finish. Two standard colors are available: Dark Grey, and Bronze. Specific options are only available in bronze.

Warranty

LPW16 luminaires, the LED arrays, and the drivers are all covered by a 5-year limited warranty. See philips.com/warranties for details.

LED Performance:

PREDICTED LUMEN DEPRECIATION DATA^{4,6}

| Ambient Temp. °C | Calculated L70 hrs ⁵ | Reported L70 Per TM-21 ^{5,6} | Calculated Lumen Maint. % @60,000 hrs |
|------------------|---------------------------------|---------------------------------------|--|
| up to 40°C | >200,000 hrs | >60,000 hrs | 94.0% |

4. Calculated performance derived from LED manufacturer's data and engineering design estimates, based on IESNA LM-80 methodology. Actual experience may vary due to field application conditions.

5. L70 is the predicted time when LED performance depreciates to 70% of initial lumen output.

6. Reported per IESNA TM21-11. Published L70 hours limited to 6 times actual LED test hours.



© 2014 Koninklijke Philips N.V. All rights reserved.
Philips reserves the right to make changes in specifications and/or to discontinue any product at any time without notice or obligation and will not be liable for any consequences resulting from the use of this publication.
philips.com/luminaires



Philips Lighting North America Corporation
200 Franklin Square Drive, Somerset, NJ 08873
Tel. 855-486-2216

Imported by: Philips Lighting,
A division of Philips Electronics Ltd.
281 Hillmount Rd, Markham, ON, Canada L6C 2S3
Tel. 800-668-9008