

A Style



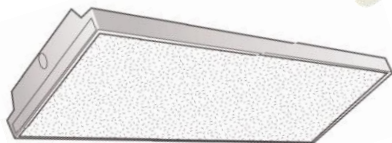
B Style



C Style



Wrap



Modern



The next generation of energy efficient LED vanity & stairwell fixtures

RemPhos™ LED LIV Series

The LED Vanity & Stairwell Fixtures by RemPhos Technologies offers an economical alternative to upgrade to long lasting LED lighting, while retaining the simple clean look of traditional wall mount fixtures. Most fixtures are powered by our efficient and (in-field) replaceable LED T8 tube light engines. LIRC has fixed COB LED boards. Some models can include an optional, integral microwave occupancy sensor which allows the fixture to run at a more energy efficient low light level mode until it senses movement in the area, at which time it raises to full brightness. The LED fixtures are available in 18-48in lengths, in multiple CCTs, and for the LIRC, which user adjustable wattages.

BI - LEVEL DIMMING

**



****To achieve bi-level dimming, add our optional internal Microwave Occupancy Sensor to realize greater energy savings!**

Powered by...



High Performance RemPhos LED T8 Tubes (4ft = DLC)

All the **benefits** of a quality LED retrofit:

- Energy savings of >65% (over fluorescent)
- Long life (L70=50,000hrs)
- Reduced maintenance costs
- Superior quality LED light
- Supports digital control systems
- No hum, no flicker, no mercury

Plus the **unique benefits** of the RemPhos LED Drums:

- **DLC tubes have efficacy >130LPW**
- Unique replaceable/serviceable LED T8s
- Easily mounts to existing ceiling junction box
- Damp environment approved
- Low glare, high uniformity clean white light
- Robust lens and sheet metal prevent breakage
- Environmentally friendly manufacturing process
- Designed in the USA, fixture assembled in the USA

RemPhos LED Drum Fixtures



DATE

JOB NAME

TYPE

Features

- UL Listed tubes inside
- LIVC has LED COBs
- Tubes >130LPW
- High/low dimming option

Applications

- ESCO refits
- Multi-family housing
- Low-income housing
- Dorms
- Hotels

Manufacturer	Series	Size	# of T8 tubes	Color Temperature	Options
RPT	LIVA LIVB LIVC LIVMODERN LIVWRAP	18IN or 24IN 18IN or 24IN 24IN* or 48IN* 36IN or 48IN* 48IN* 48IN*	1T8 or 2T8 1T8 or 2T8 1300LM and 2700LM 1T8 or 2T8 2T8 2T8	3000K 4000K	OCC = high/low motion sensor
Ordering Example: RPT-LIVA-18IN-2T8-3000K					

GREEN = QUICK SHIP
*** = DLC QPL MODEL**

Details

Application Features: The RemPhos LED vanity and stairwell fixtures are the first of their kind featuring a user replaceable DLC Listed LED T8 light engine. The UL Listed fixtures are perfect for new construction or retrofits. The fixture is designed to safely and quickly replace any existing incandescent or fluorescent fixture. Product includes all of the mounting hardware and electrical connections required.

Construction: Powder-coated white or chrome steel base, impact and UV resistant acrylic diffusion lens, T8 LED Light Engine and Driver inside.

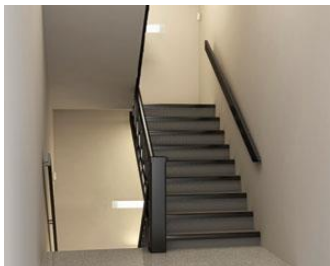
Finish: White bottom, white top, 87% reflective

Electrical: 92% efficient UL Recognized internal driver, LM80 LG LEDs

Optics: Patent-pending optical system delivers perfectly uniform light from the T8 lamp. You will be unable to tell the difference between this LED lamp and traditional fluorescent.

Approvals: UL 1598C Listed T8 Tubes, FCC, RoHS

Manufactured: Fixture: USA – 5 Year Warranty



Designed by **US.**
Made by **US.**