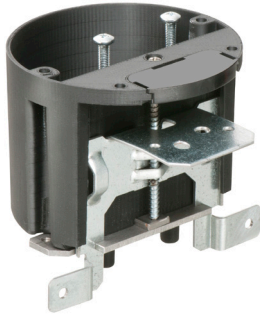


Adjustable IN/OUT BOX™ for Fan/Fixtures



Non-metallic. Preset for 1/2" ceiling, adjusts up to 1-1/2" to accommodate varying ceiling thicknesses, like single or double drywall.

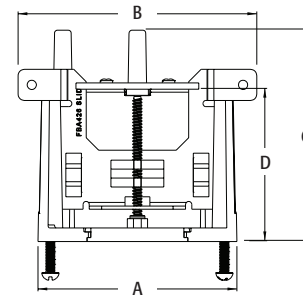
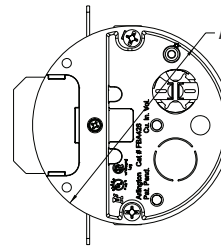
FEATURES AND BENEFITS

- Always accessible depth adjustment screw allows depth adjustment *before or after* ceiling is in place
- Mounts securely to joist in new construction
- Listed for fixture support up to 50lbs
- 2-hour fire rating

CATALOG NUMBER	UPC/DCI/NAED MFG #018997	DESCRIPTION / STYLE	UNIT PKG	STD PKG	DIM A	DIM B	DIM C	DIM D
FBA426	02575	For 1/2" or 1-1/2" Drywall 21.0 Cu. In.	25	25	4.000	4.800	4.252	3.065

PATENT PENDING.

Note: Complies with 2014 NEC, 314.20 for set back boxes.



INSTALLATION INSTRUCTIONS



1
Install FBA426 onto joist with (4) screws: (2) through support tabs A and B, and (2) more through the front flange.



2
Slide plastic insert into box.



3
Pull NM cable through installed NM connector.



4
Cutaway: Box set back in double drywall ceiling.



5
After installation of wall board, use the depth adjustment screw to adjust position of the box, if necessary.



6
Box flush with ceiling. Remove captive installation screws and install bracket.