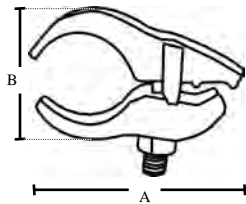
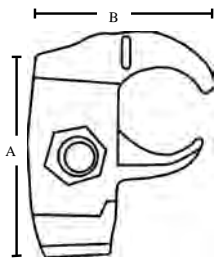


CAT#	A	B	C
1550	.820	1.00	1.12
1551	1.00	1.25	2.50
1552	1.125	1.125	2.8125
1553	1.375	1.375	3.0625
1554	1.75	1.75	3.1875
1555	2.00	2.375	3.50
1556	2.50	2.50	4.50
1557	3.00	3.00	4.875
1558	3.625	3.875	5.375
1559	4.0625	4.5625	5.875
1559A	4.6875	5.0625	6.6875



CAT#	A	B
1560	2.00	1.370
1561	2.875	1.4375
1562	3.0625	1.6875
1563	3.25	2.00
1564	3.625	2.125
1565	3.875	2.1875
1566	4.625	2.875
1567	5.25	3.25
1568	5.875	3.875
1569	6.3125	4.3125
1570	6.8125	4.8125



CAT#	A	B
1571	2.8125	2.125
1572	2.9375	2.375
1573	3.0625	2.625
1574	3.0625	3.0625
1575	3.9375	3.25
1576	4.50	4.0625
1577	5.125	4.625
1578	5.75	5.25

RIGHT ANGLE CONDUIT SUPPORT

MALLEABLE IRON

TOPAZ CAT #	UPC#	SIZE	UNIT CTN	SHIP CASE	WT/ CASE
1550	52001	3/8"	—	50	25
1551	52002	1/2"	—	50	40
1552	52003	3/4"	—	50	43
1553	52004	1"	—	50	48
1554	52005	1 1/4"	—	50	53
1555	52006	1 1/2"	—	50	58
1556	52007	2"	—	50	85
1557	52008	2 1/2"	—	25	106
1558	52009	3"	—	25	110
1559	52011	3 1/2"	—	25	128
1559A	52010	4"	—	25	140



E174011

PARALLEL CONDUIT SUPPORT

MALLEABLE IRON

TOPAZ CAT #	UPC#	SIZE	UNIT CTN	SHIP CASE	WT/ CASE
1560	52012	3/8"	—	50	32
1561	52013	1/2"	—	50	58
1562	52014	3/4"	—	50	64
1563	52015	1"	—	50	70
1564	52016	1 1/4"	—	25	72
1565	52017	1 1/2"	—	25	93
1566	52018	2"	—	25	100
1567	52019	2 1/2"	—	25	135
1568	52020	3"	—	10	155
1569	52021	3 1/2"	—	10	190
1570	52022	4"	—	10	205



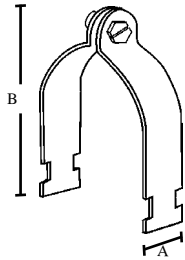
E174011

EDGE TYPE CONDUIT SUPPORT

MALLEABLE IRON

TOPAZ CAT #	UPC#	SIZE	UNIT CTN	SHIP CASE	WT/ CASE
1571	52023	1/2"	—	50	67
1572	52024	3/4"	—	50	71
1573	52025	1"	—	25	85
1574	52066	1 1/4"	—	25	91
1575	52027	1 1/2"	—	25	115
1576	52028	2"	—	25	135
1577	52029	2 1/2"	—	10	183
1578	52030	3"	—	10	230





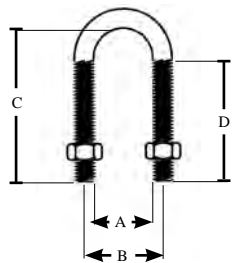
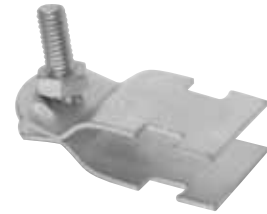
CAT#	A	B
2101	1.24	2.30
2102	1.24	2.46
2103	1.24	2.68
2104	1.24	3.21
2105	1.24	3.42
2106	1.24	4.00
2107	1.24	5.00
2108	1.24	5.55
2109	1.24	6.00
2110	1.24	6.50

STRUT CLAMP

EMT & RIGID

TOPAZ CAT #	UPC#	SIZE	UNIT CTN	SHIP CASE	WT/ CASE
2101	41031	1/2"	—	100	19
2102	41032	3/4"	—	100	21
2103	41033	1"	—	100	23
2104	41034	1 1/4"	—	100	26
2105	41035	1 1/2"	—	50	26
2106	41036	2"	—	50	31
2107	41037	2 1/2"	—	50	32
2108	41038	3"	—	25	18
2109	41039	3 1/2"	—	25	21
2110	41040	4"	—	25	25

ALL SCREWS - 5/16" X 1-1/4" SLOTTED HEX HEAD

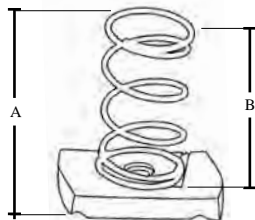


CAT#	A	B	C	D
761	1	1-1/4	2-1/2	1-13/16
762	1-1/8	1-3/8	2-13/16	1-13/16
763	1-3/8	1-5/8	3-1/16	1-13/16
764	1-3/4	2	3-3/16	1-13/16
765	2	2-3/8	3-1/2	1-13/16
766	2-1/2	2-1/2	4-1/2	2-5/8
767	3	3-1/4	4-7/8	2-5/8
768	3-5/8	3-7/8	5-3/8	2-5/8
769	4-1/16	4-9/16	5-7/8	2-5/8
770	4-11/16	5-1/16	6-11/16	2-5/8

U-BOLTS

RIGID, IMC & EMT

TOPAZ CAT #	UPC#	SIZE	BOLT SIZE	UNIT CTN	SHIP CASE	WT/ CASE
761	82541	1/2"	5/16"-18	25	250	13
762	82542	3/4"	5/16"-18	25	250	16
763	82543	1"	5/16"-18	25	250	16
764	82544	1 1/4"	5/16"-18	20	200	16
765	82545	1 1/2"	5/16"-18	20	200	19
766	82546	2"	3/8"-16	20	200	31
767	82547	2 1/2"	3/8"-16	—	10	31
768	82548	3"	3/8"-16	—	10	38
769	82549	3 1/2"	1/2"-16	—	10	41
770	82550	4"	1/2"-16	—	10	43



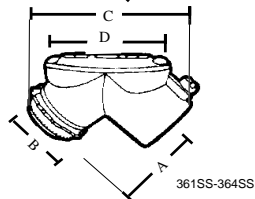
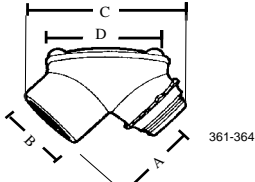
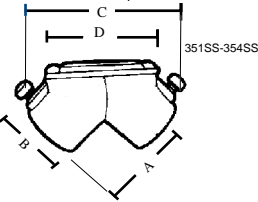
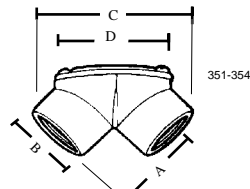
CAT#	A	B
2111	1.50	1.30
2112	1.77	1.35
2113	1.77	1.35

SPRING NUTS

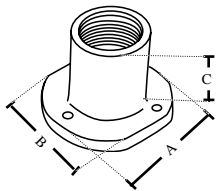
ZINC PLATED STEEL

TOPAZ CAT #	UPC#	SIZE	UNIT CTN	SHIP CASE	WT/ CASE
2111	83691	1/4-20	—	100	7
2112	83692	3/8-16	—	100	10
2113	83693	1/2-13	—	100	12

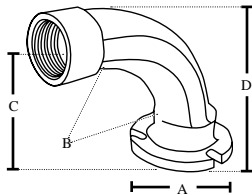




CAT#	A	B	C	D
351/SS	1.31	1.09	2.50	1.78
352/SS	1.43	1.29	2.76	2.13
353/SS	1.95	1.59	3.86	3.17
354/SS	2.26	1.97	4.56	3.25
361/SS	1.31	1.09	2.40	1.80
362/SS	1.47	1.29	2.66	2.14
363/SS	2.80	1.60	3.66	3.16
364/SS	3.13	1.96	5.16	3.24



CAT#	A	B	C
1791	1.5	1.75	1.25
1792	2.75	2	1.75
1793	2.5	3.25	1.50



CAT#	A	B	C	D
1891	1.5	1.75	3.12	3.62
1892	2.75	2	3.06	3.68
1893	2.5	3.75	2.93	3.68

RIGID PULL ELBOWS WITH GASKET

ZINC DIE CAST

TOPAZ CAT #	UPC#	SIZE	UNIT CTN	SHIP CASE	WT/ CASE
RIGID TO RIGID					
351	13510	1/2"	10	100	28
352	13520	3/4"	5	50	17
353	13530	1"	—	25	16
354	13540	1 1/4"	—	20	18

RIGID AND EMT COMBO

• SET SCREW AND THREADED

351SS	85030	1/2"	10	100	28
352SS	85031	3/4"	5	50	17
353SS	85032	1"	—	25	16
354SS	85033	1 1/4"	—	20	18

RIGID TO BOX

361	13550	1/2"	10	100	31
362	13560	3/4"	5	50	18
363	13570	1"	—	25	21
364	13580	1 1/4"	—	20	25

RIGID AND EMT COMBO

• SET SCREW AND THREADED

361SS	85034	1/2"	10	100	31
362SS	85035	3/4"	5	50	18
363SS	85036	1"	—	25	21
364SS	85037	1 1/4"	—	20	25



CONCRETE SLAB INSERTS FOR THREADED RIGID CONDUIT

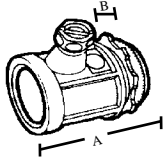
MALLEABLE IRON

TOPAZ CAT #	UPC#	SIZE	UNIT CTN	SHIP CASE	WT/ CASE
STRAIGHT					
1791	85040	1/2"	—	20	4
1792	85041	3/4"	—	20	4
1793	85042	1"	—	10	6

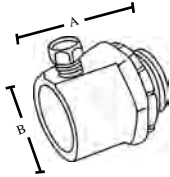
90°

1891	85043	1/2"	—	20	13
1892	85044	3/4"	—	20	16
1893	85045	1"	—	10	10

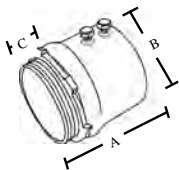




CAT#	A	B
671	1.34	.39
672	1.44	.45

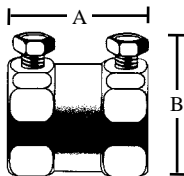


CAT#	A	B
671S/Si	1.125	1.125
672S/Si	1.25	1.375
673S/Si	1.5	1.625
674S/Si	1.75	2
675S/Si	1.875	2.25
676S/Si	2	2.75



CAT#	A	B	C
637S	3.313	3.563	.750
638S	3.813	4.188	.938
639S	3.938	4.688	.938
640S	4.188	5.188	1.000

2 SCREW



CAT#	A	B
647S	4.25	3.19
648S	4.50	3.19
649S	4.75	4.31
650S	5.00	4.81

681S	1.5	1.125
682S	1.5	1.375
683S	1.875	1.625
684S	2.1875	2
685S	2.625	2.25
686S	2.75	2.75

RIGID CONNECTORS SET SCREW TYPE

- NO THREAD
- CONCRETE TIGHT WHEN TAPED

TOPAZ CAT #	UPC#	SIZE	UNIT CTN	SHIP CASE	WT/ CASE
671	17110	1/2"	50	500	50
672	17120	3/4"	25	250	38

MALLEABLE IRON					
TOPAZ CAT #	UPC#	SIZE	UNIT CTN	SHIP CASE	WT/ CASE
671S	17135	1/2"	25	250	42
672S	17136	3/4"	25	250	22
673S	17137	1"	25	100	27
674S	17138	1 1/4"	5	50	12
675S	17139	1 1/2"	5	50	7
676S	17140	2"	—	20	10

INSULATED THROAT

671Si	17112	1/2"	25	250	42
672Si	17122	3/4"	25	250	22
673Si	17132	1"	25	100	27
674Si	17142	1 1/4"	5	50	12
675Si	17152	1 1/2"	5	50	7
676Si	17162	2"	—	20	10

STEEL					
TOPAZ CAT #	UPC#	SIZE	UNIT CTN	SHIP CASE	WT/ CASE
637S*	23060	2 1/2"	—	12	17
638S*	23070	3"	—	12	22
639S*	23080	3 1/2"	—	6	15
640S*	23090	4"	—	6	17

*EMT & RIGID

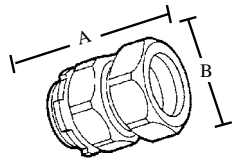
RIGID COUPLINGS SET SCREW TYPE

- NO THREAD

STEEL					
TOPAZ CAT #	UPC#	SIZE	UNIT CTN	SHIP CASE	WT/ CASE
647S	23260	2 1/2"	—	12	19
648S	23270	3"	—	12	26
649S	23280	3 1/2"	—	6	15
650S	23290	4"	—	6	17

MALLEABLE IRON					
TOPAZ CAT #	UPC#	SIZE	UNIT CTN	SHIP CASE	WT/ CASE
681S	17150	1/2"	25	250	43
682S	17151	3/4"	25	250	25
683S	17152	1"	25	100	28
684S	17153	1 1/4"	5	50	15
685S	17154	1 1/2"	5	50	9
686S	17155	2"	—	20	12





CAT#	A	B
261/i	1.35	1.17
262/i	1.48	1.43
263/i	1.58	1.75
264/i	1.86	2.15
265/i	1.94	2.38
266/i	2.49	3.38

261M	1.50	1.50
262M	1.50	1.63
263M	1.687	2.00
264M	2.00	2.38
265M	2.0625	2.63
266M	2.25	3.31

267/i	3.00	3.75
268/i	3.125	4.25
269/i	3.187	4.75
270/i	3.437	5.312

RIGID CONNECTORS COMPRESSION TYPE

- NO THREAD
- CONCRETE TIGHT

TOPAZ CAT #	UPC#	SIZE	UNIT CTN	SHIP CASE	STEEL WT/ CASE
261	12200	1/2"	20	200	26
262	12210	3/4"	10	100	20
263	12220	1"	5	50	18
264	12230	1 1/4"	5	50	32
265	12240	1 1/2"	—	12	11
266	12250	2"	—	12	14

INSULATED THROAT	STEEL
261i	12201 1/2" 20 200 26
262i	12211 3/4" 10 100 20
263i	12221 1" 5 50 18
264i	12231 1 1/4" 5 50 32
265i	12241 1 1/2" — 12 11
266i	12251 2" — 12 14
267i	12255 2 1/2" — 5 14
268i	12256 3" — 3 13
269i	12257 3 1/2" — 2 13
270i	12258 4" — 2 13

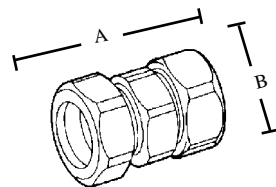
MALLEABLE IRON	
261M	85534 1/2" 20 200 13
262M	85535 3/4" 10 100 20
263M	85536 1" 5 50 36
264M	85537 1 1/4" 5 50 64
265M	85538 1 1/2" — 12 92
266M	85539 2" — 12 117
267	12251 2 1/2" — 5 14
268	12252 3" — 3 13
269	12253 3 1/2" — 2 13
270	12254 4" — 2 13

RIGID COUPLINGS COMPRESSION TYPE

- NO THREAD
- CONCRETE TIGHT

STEEL	
251	12140 1/2" 10 100 16
252	12150 3/4" 10 100 24
253	12160 1" 5 50 24
254	12170 1 1/4" 5 50 43
255	12180 1 1/2" — 12 15
256	12190 2" — 5 8

MALLEABLE IRON	
251M	85528 1/2" 10 100 16
252M	85529 3/4" 10 100 24
253M	85530 1" 5 50 48
254M	85531 1 1/4" 5 50 86
255M	85532 1 1/2" — 12 125
256M	85533 2" — 5 160
257	12131 2 1/2" — 5 260
258	12141 3" — 3 300
259	12151 3 1/2" — 2 350
260	12161 4" — 2 400



CAT#	A	B
251	1.74	1.17
252	1.82	1.43
253	1.95	1.75
254	2.65	2.15
255	2.70	2.37
256	2.93	3.38

251M	1.81	1.50
252M	1.87	1.62
253M	2.18	2.00
254M	2.62	2.37
255M	2.68	2.62
256M	3.00	3.31
257	5.75	3.93
258	5.72	4.66
259	6.00	5.20
260	6.81	5.75



E148716



E148716



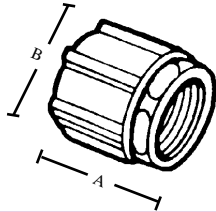
E148716



E148716



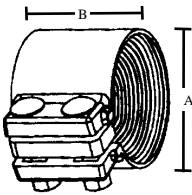
E148716



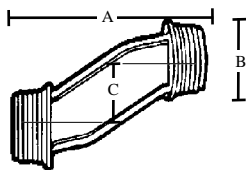
CAT#	A	B
851	1.43	1.36
852	1.63	1.58
853	1.81	1.89
854	2.19	2.38
855	2.31	2.83
856	2.44	3.29

857	2.52	4.03
858	2.58	4.62
859	2.65	5.35
860	3.42	5.87
860A	4.38	7.00
860B	4.38	8.25

851S	1.43	1.31
852S	1.52	1.61
853S	1.70	2.13
854S	2.13	2.40
855S	2.18	2.89
856S	2.36	3.40



CAT#	A	B
76	1.95	3.35
77	3.25	4.75
78	3.25	5.50
79	3.35	5.75
80	3.40	6.25



CAT#	A	B	C
111/i	2.460	1.000	.750
112/i	2.560	1.220	.750
113/i	2.560	1.525	.750
114/i	2.910	1.910	.750
115/i	3.080	2.125	.750
116/i	3.145	2.665	.750
117	3.970	3.280	.750
118	4.420	3.795	.750

RIGID COUPLINGS

THREE PIECE TYPE

MALLEABLE IRON

TOPAZ CAT #	UPC#	SIZE	UNIT CTN	SHIP CASE	WT/ CASE
851	18630	1/2"	20	200	40
852	18640	3/4"	10	100	30
853	18650	1"	5	50	23
854	18660	1 1/4"	5	50	55
855	18670	1 1/2"	3	30	44
856	18680	2"	—	20	44

857	18690	2 1/2"	—	10	37
858	18700	3"	—	5	20
859	18710	3 1/2"	—	5	29
860	18720	4"	—	2	18
860A	18722	5"	—	1	12
860B	18724	6"	—	1	21

STEEL					
TOPAZ CAT #	UPC#	SIZE	UNIT CTN	SHIP CASE	WT/ CASE
851S	18631	1/2"	20	200	20
852S	18641	3/4"	10	100	30
853S	18651	1"	5	50	46
854S	18661	1 1/4"	5	50	110
855S	18671	1 1/2"	3	30	147
856S	18681	2"	—	20	220

SLIP-ON TYPE

MALLEABLE IRON

76*	70400	2"	5	25	26
77*	70410	2 1/2"	2	10	23
78*	70420	3"	2	10	30
79*	70430	3 1/2"	1	5	19
80*	70440	4"	1	5	20

*A neoprene gasket makes a concrete tight seal. Used when conduit cannot be turned.

RIGID OFFSET NIPPLES

3/4" OFFSET

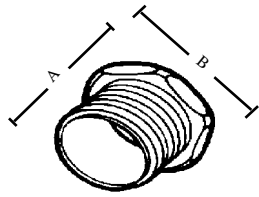
ZINC DIE CAST

TOPAZ CAT #	UPC#	SIZE	UNIT CTN	SHIP CASE	WT/ CASE
111	10610	1/2"	10	100	12
112	10620	3/4"	10	100	16
113	10630	1"	10	100	22
114	10640	1 1/4"	5	50	17
115	10650	1 1/2"	5	50	23
116	10660	2"	2	20	13
117	10670	2 1/2"	—	2	13
118	10680	3"	—	2	6

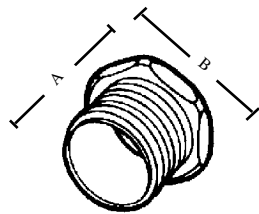
INSULATED THROAT

111i	10611	1/2"	10	100	12
112i	10621	3/4"	10	100	16
113i	10631	1"	10	100	22
114i	10641	1 1/4"	5	50	17
115i	10651	1 1/2"	5	50	23
116i	10661	2"	2	20	13





CAT#	A	B
751/751i	.68	1.02
751A	1.00	1.02
752A	1.00	1.29
752/752i	.75	1.29
753/753i	.87	1.53
754/754i	.94	1.89
755/755i	.91	2.30
756/756i	1.07	2.88
757/757i	1.38	3.39
758/758i	1.44	4.06
759/759i	1.47	4.61
760/760i	1.47	5.15



CAT#	A	B
751M/751Mi	.68	1.02
752M/752Mi	.75	1.29
753M/753Mi	.87	1.53
754M/754Mi	.94	1.89
755M/755Mi	.91	2.30
756M/756Mi	1.07	2.88
757M/757Mi	1.38	3.39
758M/758Mi	1.44	4.06
759M/759Mi	1.47	4.61
760M/760Mi	1.47	5.15
760A	2.352	6.0
760B	2.180	7.0

RIGID CONDUIT NIPPLES

ZINC DIE CAST

TOPAZ CAT #	UPC#	SIZE	UNIT CTN	SHIP CASE	WT/ CASE
751	17860	1/2"	100	1000	40
751A	17859	1/2" x 1" L	—	100	5
752	17870	3/4"	50	500	30
752A	17851	3/4" x 1" L	—	50	25
753	17880	1"	25	250	25
754	17890	1 1/4"	25	250	35
755	17900	1 1/2"	25	100	20
756	17910	2"	10	40	13
757	17920	2 1/2"	10	40	17
758	17930	3"	10	40	22
759	17940	3 1/2"	10	40	27
760	17950	4"	5	20	14

INSULATED THROAT

751i	17861	1/2"	100	1000	40
752i	17871	3/4"	50	500	30
753i	17881	1"	25	250	25
754i	17891	1 1/4"	25	250	35
755i	17901	1 1/2"	25	100	20
756i	17911	2"	10	40	13
757i	17921	2 1/2"	10	40	17
758i	17931	3"	10	40	22
759i	17941	3 1/2"	10	40	27
760i	17951	4"	5	20	14

MALLEABLE IRON

751M	17862	1/2"	100	1000	5
752M	17872	3/4"	50	500	7
753M	17882	1"	25	250	12
754M	17892	1 1/4"	25	250	15
755M	17902	1 1/2"	25	250	22
756M	17912	2"	10	40	35
757M	17922	2 1/2"	10	40	76
758M	17932	3"	10	40	101
759M	17942	3 1/2"	10	40	124
760M	17943	4"	5	20	200
760A	17952	5"	—	1	75
760B	17953	6"	—	1	65

INSULATED THROAT

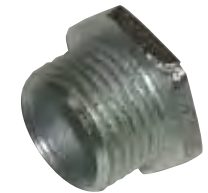
751Mi	17863	1/2"	100	1000	7
752Mi	17873	3/4"	50	500	7
753Mi	17883	1"	25	250	12
754Mi	17893	1 1/4"	25	250	15
755Mi	17903	1 1/2"	25	250	22
756Mi	17913	2"	10	40	35
757Mi	17923	2 1/2"	10	40	76
758Mi	17933	3"	10	40	101
759Mi	17943	3 1/2"	10	40	124
760Mi	17944	4"	5	20	200



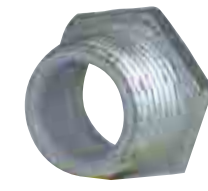
E148716



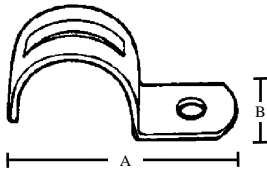
E148716



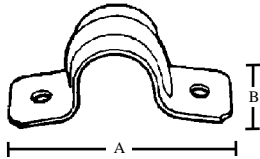
E148716



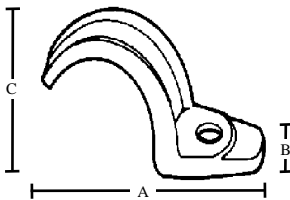
E148716



CAT#	A	B
531A	1.51	.562
531B	1.81	.562
531	1.91	.625
532	2.21	.750
533	2.57	.875
534	2.79	.880
535	3.69	.899
536	4.17	1.140
517	5.00	1.280
518	5.55	1.280
519	6.37	1.280
520	6.87	1.280
520A	9.00	1.500
520B	10.35	1.50



CAT#	A	B
541A	2.15	.562
541B	2.20	.562
541	2.43	.625
542	2.81	.685
543	3.28	.750
544	4.02	.875
545	4.58	1.00
546	5.22	1.00
527	5.91	1.00
528	6.71	1.00
529	7.51	1.00
530	8.31	1.00
530A	10.60	1.25
530B	11.85	1.25



CAT#	A	B	C
561	2.250	.660	.94
562	2.560	.750	1.22
563	3.060	.810	1.50
564	3.690	.880	1.88
565	4.000	1.00	2.06
566	5.060	1.130	2.56
567	5.940	1.380	3.06
568	7.440	1.630	3.81
569	8.190	1.810	4.38
570	8.690	2.000	5.00
570A	9.3750	2.68750	6.00
570B	10.375	3.1250	7.00

RIGID STRAPS

TOPAZ CAT #	UPC#	SIZE	UNIT CTN	SHIP CASE	WT/ CASE
STEEL					
ONE HOLE					
• SNAP-ON TYPE 1/2" - 2"					
531A	15041	1/4"	100	1000	20
531B	15045	3/8"	100	1000	20
531	15050	1/2"	50	500	21
532	15060	3/4"	50	500	15
533	15070	1"	25	250	25
534	15080	1 1/4"	20	200	20
535	15090	1 1/2"	20	200	32
536	15100	2"	10	100	22
517*	15670	2 1/2"	—	50	21
518*	15680	3"	—	25	13
519*	15690	3 1/2"	—	25	18
520*	15700	4"	—	25	20
520A*	15702	5"	—	10	5
520B*	15704	6"	—	10	6

* EMT & RIGID

TWO HOLE

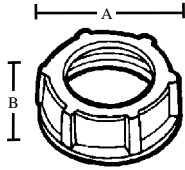
541A	15043	1/4"	100	1000	18
541B	15046	3/8"	100	1000	18
541	15150	1/2"	50	500	13
542	15160	3/4"	50	500	16
543	15170	1"	25	250	12
544	15180	1 1/4"	20	200	13
545	15190	1 1/2"	10	100	12
546	15200	2"	—	50	7
527*	15010	2 1/2"	—	25	6
528*	15020	3"	—	25	7
529*	15030	3 1/2"	—	25	8
530*	15040	4"	—	25	7
530A*	15042	5"	—	10	5
530B*	15044	6"	—	10	6

* EMT & RIGID

ONE HOLE MALLEABLE IRON ZINC PLATED

561	15350	1/2"	100	1000	40
562	15360	3/4"	50	500	25
563	15370	1"	25	250	20
564	15380	1 1/4"	20	200	20
565	15390	1 1/2"	10	100	16
566	15400	2"	—	25	9
567	15410	2 1/2"	—	25	17
568	15420	3"	—	25	25
569	15430	3 1/2"	—	10	15
570	15440	4"	—	10	22
570A	15441	5"	—	10	35
570B	15442	6"	—	10	45





CAT#	A	B
301	1.053	.37
302	1.327	.37
303	1.584	.47
304	1.952	.50
305	2.201	.52
306	2.693	.52
307	3.235	.85
308	3.855	.85
309	4.359	.85
310	5.011	.85

301M	1.223	.48
302M	1.498	.49
303M	1.818	.56
304M	2.423	.61
305M	2.512	.68
306M	3.053	.68
307M	3.624	.85
308M	4.172	.91
309M	4.767	1.00
310M	5.321	1.06
310AM	6.15	1.30
310BM	7.19	1.30

301CB	1.053	.37
302CB	1.327	.37
303CB	1.584	.37
304CB	1.952	.50
305CB	2.201	.52
306CB	2.093	.52
307CB	3.235	.85
308CB	3.855	.85
309CB	4.359	.85
310CB	5.011	.85
310ACB	6.15	1.30
310BCB	7.25	1.125

RIGID CONDUIT BUSHINGS

ZINC DIE CAST

TOPAZ CAT #	UPC#	SIZE	UNIT CTN	SHIP CASE	WT/ CASE
301	12530	1/2"	100	1000	30
302	12540	3/4"	100	1000	50
303	12550	1"	50	500	30
304	12560	1 1/4"	25	250	25
305	12570	1 1/2"	25	250	38
306	12580	2"	25	100	17
307	12590	2 1/2"	10	100	36
308	12600	3"	—	10	5
309	12610	3 1/2"	—	10	6
310	12620	4"	—	10	7



MALLEABLE IRON

301M	12630	1/2"	100	1000	50
302M	12640	3/4"	50	500	30
303M	12650	1"	50	500	24
304M	12660	1 1/4"	25	250	30
305M	12670	1 1/2"	—	25	22
306M	12680	2"	—	25	35
307M	12690	2 1/2"	—	15	20
308M	12700	3"	—	10	10
309M	12710	3 1/2"	—	10	13
310M	12720	4"	—	10	20
310AM	12622	5"	—	10	25
310BM	12623	6"	—	10	35



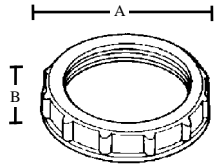
RIGID CAPPED BUSHINGS

STEEL CAP

ZINC DIE CAST

TOPAZ CAT #	UPC#	SIZE	UNIT CTN	SHIP CASE	WT/ CASE
301CB	12531	1/2"	100	1000	5
302CB	12541	3/4"	100	1000	7
303CB	12551	1"	50	500	11
304CB	12561	1 1/4"	25	250	17
305CB	12571	1 1/2"	25	250	21
306CB	12581	2"	25	1000	34
307CB	12591	2 1/2"	10	100	48
308CB	12601	3"	10	100	61
309CB	12611	3 1/2"	—	10	70
310CB	12631	4"	—	10	125
310ACB	12621	5"	—	10	78
310BCB	85152	6"	—	10	85





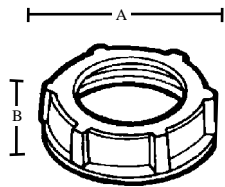
INSULATING PLASTIC BUSHINGS

105°C FLAME RETARDANT

THERMOPLASTIC

CAT#	A	B
831	1.06	.43
832	1.31	.43
833	1.59	.48
834	1.96	.56
835	2.18	.56
836	2.68	.59
837	3.25	.72
838	3.87	.75
839	4.37	.77
840	5.00	.77
840A	6.25	1.00
840B	7.50	1.00

TOPAZ CAT #	UPC#	SIZE	UNIT CTN	SHIP CASE	WT/ CASE
831	18450	1/2"	100	1000	6
832	18460	3/4"	100	1000	9
833	18470	1"	50	500	11
834	18480	1 1/4"	25	250	5
835	18490	1 1/2"	25	250	7
836	18500	2"	20	200	12
837	18510	2 1/2"	—	50	5
838	18520	3"	—	25	3
839	18530	3 1/2"	—	25	5
840	18540	4"	—	10	7
840A	18550	5"	—	10	3
840B	18560	6"	—	10	4



RIGID BUSHINGS INSULATED

• 105° C. THERMOPLASTIC LINERS

ZINC DIE CAST

CAT#	A	B
311	1.053	.394
312	1.327	.394
313	1.584	.477
314	1.952	.503
315	2.201	.522
316	2.693	.564
317	3.235	.866
318	3.855	.866
319	4.359	.866
320	5.011	.866

TOPAZ CAT #	UPC#	SIZE	UNIT CTN	SHIP CASE	WT/ CASE
311	12730	1/2"	100	1000	30
312	12740	3/4"	50	500	20
313	12750	1"	50	500	40
314	12760	1 1/4"	25	250	25
315	12770	1 1/2"	25	250	30
316	12780	2"	—	100	14
317	12790	2 1/2"	—	50	20
318	12800	3"	—	25	12
319	12810	3 1/2"	—	25	14
320	12820	4"	—	10	6

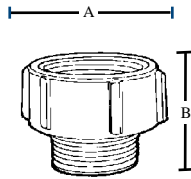


CAT#	A	B
311M	1.223	.506
312M	1.498	.547
313M	1.818	.662
314M	2.423	.735
315M	2.512	.808
316M	3.053	.808
317M	3.624	.958
318M	4.172	1.052
319M	4.767	1.169
320M	5.321	1.178
320AM	6.15	1.30
320BM	7.19	1.30

TOPAZ CAT #	UPC#	SIZE	UNIT CTN	SHIP CASE	WT/ CASE
311M	12830	1/2"	100	1000	20
312M	12840	3/4"	50	500	20
313M	12850	1"	50	500	40
314M	12860	1 1/4"	25	250	43
315M	12870	1 1/2"	25	100	25
316M	12880	2"	10	100	30
317M	12890	2 1/2"	—	50	20
318M	12900	3"	—	25	13
319M	12910	3 1/2"	—	25	18
320M	12920	4"	—	10	10
320AM	12922	5"	—	10	25
320BM	12924	6"	—	10	35

MALLEABLE IRON



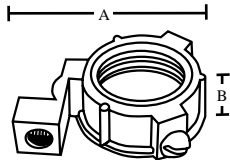


CAT#	A	B
981	1.35	1.40
982	1.62	1.40

RIGID MALE ENLARGERS

ZINC DIE CAST

TOPAZ CAT #	UPC#	SIZE	UNIT CTN	SHIP CASE	WT/ CASE
981	19640	1/2" M x 3/4" F	25	250	50
982	19650	3/4" M x 1" F	10	100	12



CAT#	A	B
321	1.25	.50
322	1.50	.50
323	1.75	.56
324	2.12	.62
325	2.37	.75
326	2.81	.75
327	3.62	.93
328	4.18	.93
329	4.68	.93
330	5.25	.93
321M	1.25	.50
322M	1.48	.54
323M	1.80	.65
324M	2.40	.73
325M	2.50	.80
326M	3.03	.80
327M	3.60	.95
328M	4.16	1.03
329M	4.75	1.15
330M	5.30	1.17
330AM	6.15	1.130
330BM	7.19	1.130

INSULATED METALLIC GROUNDING BUSHINGS WITH ALUMINUM LUG

- FOR COPPER OR ALUMINUM BARE GROUND WIRE
- 105° C. THERMOPLASTIC LINERS

ZINC DIE CAST

TOPAZ CAT #	UPC#	SIZE	GROUNDING LUG		UNIT CTN	SHIP CASE	WT/ CASE
			WIRE SIZE MIN	WIRE SIZE MAX			
321	12930	1/2"	14	4	50	500	25
322	12940	3/4"	14	4	50	500	35
323	12950	1"	14	4	25	250	30
324	12960	1 1/4"	14	4	20	200	34
325	12970	1 1/2"	14	2	10	100	20
326	12980	2"	14	2	10	100	35
327	12990	2 1/2"	14	1/0	—	50	25
328	13000	3"	14	1/0	—	10	6
329	13010	3 1/2"	14	2/0	—	10	7
330	13020	4"	6	250 MCM	—	10	8



E148716

MALLEABLE IRON

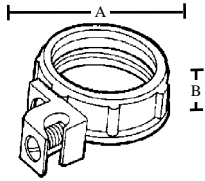
321M	13030	1/2"	14	4	50	500	25
322M	13040	3/4"	14	4	50	500	30
323M	13050	1"	14	4	25	250	23
324M	13060	1 1/4"	14	4	20	200	34
325M	13070	1 1/2"	14	2	25	250	53
326M	13080	2"	14	2	25	250	78
327M	13090	2 1/2"	14	1/0	—	10	4
328M	13100	3"	14	1/0	—	10	5
329M	13110	3 1/2"	14	2/0	—	10	15
330M	13120	4"	14	2/0	—	10	20
330AM	13122	5"	6	250 MCM	—	10	25
330BM	13124	6"	6	250 MCM	—	10	35



E195122

INSULATED METALLIC GROUNDING BUSHINGS WITH ALUMINUM LAY-IN LUG

- 105° C. THERMOPLASTIC LINERS
 - FOR COPPER OR ALUMINUM BARE GROUND CONNECTOR
- ZINC DIE CAST**



CAT#	A	B
331	1.25	.50
332	1.50	.50
333	1.75	.56
334	2.12	.62
334A	2.12	.62
335	2.37	.75
335A	2.37	.75
336	2.81	.75
336A	2.81	.75
337	3.62	.93
337A	3.62	.93
338	4.18	.93
338A	4.18	.93
339	4.68	.93
339A	4.68	.93
340	5.25	.93
340A	5.25	.93

331M	1.25	.50
332M	1.48	.54
333M	1.80	.65
334M	2.40	.73
334AM	2.40	.73
335M	2.50	.80
335AM	2.50	.80
336M	3.03	.80
336AM	3.03	.80
337M	3.60	.95
337AM	3.60	.95
338M	4.16	1.03
338AM	4.16	1.03
339M	4.75	1.15
339AM	4.75	1.15
340M	5.30	1.17
340AM	6.15	1.30
340ALM	6.15	1.30
340BLM	7.19	1.30

331MSS	1.25	.50
332MSS	1.48	.54
333MSS	1.80	.65
334MSS	2.40	.73
335MSS	2.50	.80
336MSS	3.03	.80
337MSS	3.60	.95
338MSS	4.16	1.03
339MSS	4.75	1.15
340MSS	5.30	1.17
340AMSS	6.15	1.30
340BMSS	7.19	1.30

GROUNDING LUG

TOPAZ CAT #	UPC#	SIZE	WIRE SIZE MIN MAX	UNIT CTN	SHIP CASE	WT/ CASE
331	13130	1/2"	14 4	50	500	30
332	13140	3/4"	14 4	50	500	35
333	13150	1"	14 4	25	250	23
334	13160	1 1/4"	14 4	20	200	26
334A	13170	1 1/4"	14 1/0	20	200	26
335	13180	1 1/2"	14 4	10	100	16
335A	13190	1 1/2"	14 1/0	10	100	16
336	13200	2"	14 4	10	100	21
336A	13210	2"	14 1/0	10	100	21
337	13220	2 1/2"	14 1/0	—	50	20
337A	13230	2 1/2"	6 250 MCM	—	50	20
338	13240	3"	14 1/0	—	50	29
338A	13250	3"	6 250 MCM	—	50	29
339	13260	3 1/2"	14 1/0	—	10	15
339A	13270	3 1/2"	6 250 MCM	—	10	15
340	13280	4"	14 1/0	—	10	20
340A	13290	4"	6 250 MCM	—	10	20

MALLEABLE IRON

331M	13300	1/2"	14 4	50	500	45
332M	13310	3/4"	14 4	50	500	50
333M	13320	1"	14 4	25	250	40
334M	13330	1 1/4"	14 4	20	200	35
334AM	13340	1 1/4"	14 1/0	20	200	35
335M	13350	1 1/2"	14 4	10	100	25
335AM	13360	1 1/2"	14 1/0	10	100	25
336M	13370	2"	14 4	10	100	30
336AM	13380	2"	14 1/0	10	100	30
337M	13390	2 1/2"	14 1/0	—	50	25
337AM	13400	2 1/2"	6 250 MCM	—	50	25
338M	13410	3"	14 1/0	—	25	18
338AM	13420	3"	6 250 MCM	—	25	18
339M	13430	3 1/2"	14 1/0	—	10	20
339AM	13440	3 1/2"	6 250 MCM	—	10	20
340M	13450	4"	14 1/0	—	10	25
340AM	13460	4"	6 250 MCM	—	10	25
340ALM	13462	5"	6 250 MCM	—	10	25
340BLM	13463	6"	6 250 MCM	—	10	35

SET SCREW NO THREAD

331MSS	13321	1/2"	14 4	50	500	25
332MSS	13331	3/4"	14 4	50	500	30
333MSS	13341	1"	14 4	25	250	23
334MSS	13351	1 1/4"	14 4	20	200	30
335MSS	13361	1 1/2"	14 4	10	100	25
336MSS	13371	2"	14 4	10	100	30
337MSS	13391	2 1/2"	14 1/0	5	50	38
338MSS	13411	3"	14 1/0	—	25	35
339MSS	13431	3 1/2"	14 1/0	—	10	15
340MSS	13451	4"	14 1/0	—	10	20
340AMSS	13461	5"	6 250MCM	—	10	25
340BMSS	13471	6"	6 250MCM	—	10	35



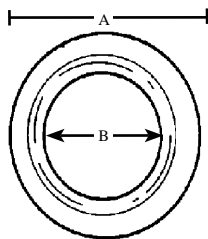
E195122



E195122



E195122



CAT#	A	B
900	1.420	.870
901	1.710	.870
902	1.710	1.060
903	2.080	.870
904	2.080	1.125
905	2.080	1.380
906	2.635	.870
907	2.635	1.060
908	2.635	1.335
909	2.635	1.690
910	3.265	.870
911	3.265	1.060
912	3.265	1.335
913	3.265	1.690
914	3.265	1.935
915	3.265	.870
916	3.265	1.060
917	3.265	1.370
918	3.265	1.750
919	3.265	1.995
920	3.265	2.425
921	4.490	.870
922	4.490	1.060
923	4.490	1.360
924	4.490	1.750
925	4.490	1.995
926	4.490	2.400
927	4.490	2.940
928	5.000	.870
929	5.000	1.060
930	5.000	1.380
931	5.000	1.710
932	5.000	1.980
933	5.000	2.435
934	5.000	2.920
935	5.000	3.560
936	5.500	.870
937	5.500	1.060
938	5.500	1.380
939	5.500	1.715
940	5.500	1.970
941	5.500	2.435
942	5.500	2.920
943	5.500	3.560
944	5.500	4.050

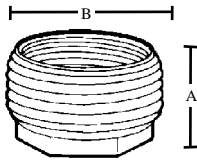
REDUCING WASHERS

TOPAZ CAT #	UPC#	SIZE	UNIT CTN	SHIP CASE	STEEL WT/ CASE
900	19050	3/4" x 1/2"	100	100	2
901	19060	1" x 1/2"	100	100	2
902	19070	1" x 3/4"	100	100	2
903	19080	1 1/4" x 1/2"	50	50	2
904	19090	1 1/4" x 3/4"	50	50	2
905	19100	1 1/4" x 1"	50	50	1
906	19110	1 1/2" x 1/2"	50	50	2
907	19120	1 1/2" x 3/4"	50	50	4
908	19130	1 1/2" x 1"	50	50	4
909	19140	1 1/2" x 1 1/4"	50	50	2
910	19150	2" x 1/2"	25	25	2
911	19160	2" x 3/4"	25	25	2
912	19170	2" x 1"	25	25	2
913	19180	2" x 1 1/4"	25	25	2
914	19190	2" x 1 1/2"	25	25	2
915	19200	2 1/2" x 1/2"	25	25	2
916	19210	2 1/2" x 3/4"	25	25	2
917	19220	2 1/2" x 1"	25	25	2
918	19230	2 1/2" x 1 1/4"	25	25	2
919	19240	2 1/2" x 1 1/2"	25	25	1
920	19250	2 1/2" x 2"	25	25	1
921	19260	3" x 1/2"	25	25	6
922	19270	3" x 3/4"	25	25	5
923	19280	3" x 1"	25	25	5
924	19290	3" x 1 1/4"	25	25	4
925	19300	3" x 1 1/2"	25	25	3
926	19310	3" x 2"	25	25	2
927	19320	3" x 2 1/2"	25	25	2
928	19330	3 1/2" x 1/2"	10	10	3
929	19340	3 1/2" x 3/4"	10	10	3
930	19350	3 1/2" x 1"	10	10	3
931	19360	3 1/2" x 1 1/4"	10	10	3
932	19370	3 1/2" x 1 1/2"	10	10	3
933	19380	3 1/2" x 2"	10	10	3
934	19390	3 1/2" x 2 1/2"	10	10	2
935	19400	3 1/2" x 3"	10	10	2
936	19410	4" x 1/2"	10	10	3
937	19420	4" x 3/4"	10	10	3
938	19430	4" x 1"	10	10	3
939	19440	4" x 1 1/4"	10	10	2
940	19450	4" x 1 1/2"	10	10	2
941	19460	4" x 2"	10	10	2
942	19470	4" x 2 1/2"	10	10	2
943	19480	4" x 3"	10	10	2
944	19490	4" x 3 1/2"	10	10	1



E148715

REDUCING BUSHINGS



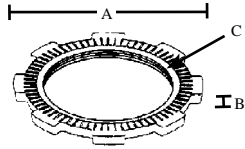
CAT#	A	B
RB1	.563	.750
RB2	.650	.920
RB3	.715	1.125
RB4	.715	1.125
RB5	.820	1.470
RB6	.820	1.470
RB7	.820	1.470
RB8	.850	1.700
RB9	.850	1.700
RB10	.850	1.700
RB11	.850	1.700
RB12	.970	2.230
RB13	.970	2.230
RB14	.970	2.230
RB15	.970	2.230
RB16	.970	2.230
RB17	1.563	2.750
RB18	2.090	2.845
RB19	1.125	2.820
RB20	1.200	3.485
RB21	2.100	3.445
RB22	2.020	3.460
RB23	2.000	3.380
RB24	1.390	4.395
RB25	1.905	4.575
RB26	1.905	4.575
RB27	2.020	3.945
RB28	1.385	4.920
RB29	2.070	5.220
RB30	2.070	5.220
RB31	1.775	5.250
RB32	1.400	5.250

		STEEL			
TOPAZ CAT #	UPC#	SIZE	UNIT CTN	SHIP CASE	WT/ CASE
RB1	20060	1/2" x 3/8"	—	100	4
RB2	20070	3/4" x 1/2"	—	100	4
RB3	20080	1" x 1/2"	—	50	6
RB4	20090	1" x 3/4"	—	50	3
RB5	20100	1 1/4" x 1/2"	—	25	7
RB6	20110	1 1/4" x 3/4"	—	25	6
RB7	20120	1 1/4" x 1"	—	25	4
RB8	20130	1 1/2" x 1/2"	—	25	10
RB9	20140	1 1/2" x 3/4"	—	25	9
RB10	20150	1 1/2" x 1"	—	25	7
RB11	20160	1 1/2" x 1 1/4"	—	25	3
RB12	20170	2" x 1/2"	—	10	5
RB13	20180	2" x 3/4"	—	10	8
RB14	20190	2" x 1"	—	10	7
RB15	20200	2" x 1 1/4"	—	10	5
RB16	20210	2" x 1 1/2"	—	10	4

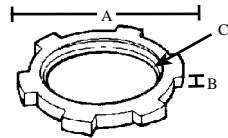


		MALLEABLE IRON			
TOPAZ CAT #	UPC#	SIZE	UNIT CTN	SHIP CASE	WT/ CASE
RB17	20220	2 1/2" x 1"	—	10	9
RB18	20230	2 1/2" x 1 1/4"	—	10	9
RB19	20240	2 1/2" x 1 1/2"	—	10	8
RB20	20250	2 1/2" x 2"	—	10	5
RB21	20260	3" x 1 1/4"	—	10	11
RB22	20270	3" x 1 1/2"	—	10	11
RB23	20280	3" x 2"	—	10	11
RB24	20290	3" x 2 1/2"	—	10	10
RB25	20300	3 1/2" x 1 1/2"	—	10	20
RB26	20310	3 1/2" x 2"	—	10	10
RB27	20320	3 1/2" x 2 1/2"	—	10	9
RB28	20330	3 1/2" x 3"	—	10	15
RB29	20340	4" x 2"	—	10	11
RB30	20350	4" x 2 1/2"	—	10	15
RB31	20360	4" x 3"	—	10	13
RB32	20370	4" x 3 1/2"	—	10	13



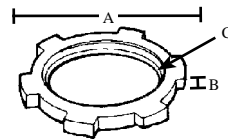


CAT#	A	B	C
241	1.12	.15	.787-.797
242	1.33	.15	.999-1.009
243	1.68	.19	1.250-1.260
244	2.15	.19	1.595-1.605
245	2.35	.19	1.837-1.847
246	2.89	.19	2.307-2.317
247	3.43	.25	2.777-2.788
248	4.12	.25	3.403-3.414
249	4.67	.27	3.892-3.904
250	5.25	.27	4.399-4.411



CAT#	A	B	C
281	1.15	.110	.787-.797
282	1.45	.115	.999-1.009
283	1.75	.140	1.250-1.260
284	2.10	.140	1.595-1.605
285	2.40	.140	1.837-1.847
286	2.95	.140	2.307-2.317
287	3.55	.185	2.777-2.788
288	3.55	.190	3.403-3.414
289	4.20	.190	3.892-3.904
290	4.75	.190	4.399-4.411
290A	6.67	.380	5.488-5.500
290B	7.93	.400	6.545-6.557

C=THREAD PITCH DIAMETER



CAT#	A	B	C
281UL	1.115	.125	.787-.797
282UL	1.375	.125	.999-1.009
283UL	1.6875	.170	1.250-1.260
284UL	2.050	.170	1.595-1.605
285UL	2.345	.170	1.837-1.847
286UL	2.845	.170	2.307-2.317
287UL	3.520	.170	2.777-2.788
288UL	4.215	.170	3.403-3.414
289UL	4.735	.170	3.892-3.904
290UL	5.275	.170	4.399-4.411

C=THREAD PITCH DIAMETER

RIGID LOCKNUTS

ZINC DIE CAST

TOPAZ CAT #	UPC#	SIZE	THREADS PER INCH	UNIT CTN	SHIP CASE	WT/ CASE
241	12040	1/2"	14	200	2000	20
242	12050	3/4"	14	100	1000	20
243	12060	1"	11 1/2	100	1000	20
244	12070	1 1/4"	11 1/2	50	500	20
245	12080	1 1/2"	11 1/2	50	500	20
246	12090	2"	11 1/2	50	200	12
247	12100	2 1/2"	8	25	100	13
248	12110	3"	8	25	100	18
249	12120	3 1/2"	8	10	40	13
250	12130	4"	8	10	40	15



E148716

STEEL

281	12300	1/2"	14	100	2000	20
282	12310	3/4"	14	100	1000	20
283	12320	1"	11 1/2	100	1000	30
284	12330	1 1/4"	11 1/2	50	500	20
285	12340	1 1/2"	11 1/2	50	500	30
286	12350	2"	11 1/2	25	250	20
287	12360	2 1/2"	8	—	50	6
288	12370	3"	8	—	50	9
289	12380	3 1/2"	8	—	25	6
290	12390	4"	8	—	25	7
290A	12400	5"	8	—	10	5
290B	12410	6"	8	—	10	8



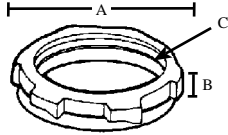
281UL	86392	1/2"	14	200	2000	23
282UL	86393	3/4"	14	100	1000	23
283UL	86394	1"	11 1/2	100	1000	33
284UL	86395	1 1/4"	11 1/2	50	500	23
285UL	86396	1 1/2"	11 1/2	50	500	33
286UL	86397	2"	11 1/2	25	250	23
287UL	86398	2 1/2"	8	—	50	8
288UL	86399	3"	8	—	50	12
289UL	86400	3 1/2"	8	—	25	9
290UL	86401	4"	8	—	25	10



E148716

SEALING LOCKNUTS

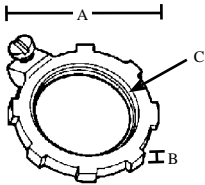
• ZINC PLATED WITH PVC MOLDED GASKET



CAT#	A	B	C
711	1.12	.26	.787-.797
712	1.37	.27	.999-1.009
713	1.75	.28	1.250-1.260
714	2.06	.32	1.595-1.605
715	2.37	.32	1.837-1.847
716	2.87	.32	2.307-2.317
717	3.43	.32	2.777-2.788
718	4.12	.32	3.403-3.414
719	4.62	.32	3.892-3.904
720	5.18	.32	4.399-4.411
720A	6.67	.50	5.488-5.500
720B	7.83	.52	6.545-6.567

C=THREAD PITCH DIAMETER

GROUNDING LOCKNUTS



CAT#	A	B	C
551	1.15	.110	.787-.797
552	1.45	.115	.999-1.009
553	1.75	.140	1.250-1.260
554	2.10	.140	1.595-1.605
555	2.40	.140	1.837-1.847
556	2.95	.140	2.307-2.317
557	3.55	.185	2.777-2.788
558	3.55	.190	3.403-3.414
559	4.20	.190	3.892-3.904
560	4.75	.190	4.399-4.411

C=THREAD PITCH DIAMETER

STEEL

TOPAZ CAT #	UPC#	SIZE	THREADS PER INCH	UNIT CTN	SHIP CASE	WT/ CASE
711	17450	1/2"	14	50	500	10
712	17460	3/4"	14	50	500	16
713	17470	1"	11 1/2	25	250	4
714	17480	1 1/4"	11 1/2	10	100	8
715	17490	1 1/2"	11 1/2	10	100	8
716	17500	2"	11 1/2	10	100	12
717	17510	2 1/2"	8	—	25	5
718	17520	3"	8	—	25	5
719	17530	3 1/2"	8	—	25	6
720	17540	4"	8	—	25	6
720A	85017	5"	8	—	5	6
720B	17542	6"	8	—	5	10



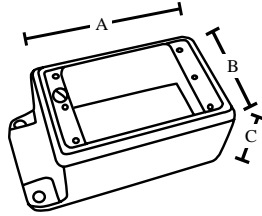
E321980

STEEL

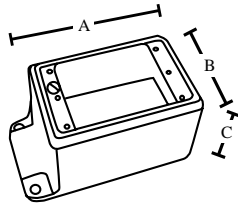
TOPAZ CAT #	UPC#	SIZE	THREADS PER INCH	UNIT CTN	SHIP CASE	WT/ CASE
551	15250	1/2"	14	100	1000	30
552	15260	3/4"	14	100	1000	30
553	15270	1"	11 1/2	50	500	25
554	15280	1 1/4"	11 1/2	50	500	30
555	15290	1 1/2"	11 1/2	25	250	22
556	15300	2"	11 1/2	20	200	28
557	15310	2 1/2"	8	—	50	8
558	15320	3"	8	—	50	14
559	15330	3 1/2"	8	—	25	9
560	15340	4"	8	—	25	10



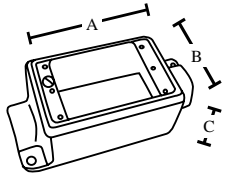
E323726



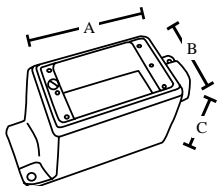
CAT#	A	B	C
FS1M	5.25	2.93	2.125
FS2M	5.25	2.93	2.125
FS3M	5.25	2.93	2.125



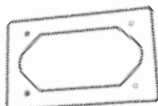
CAT#	A	B	C
FSD1M	5.25	3	2.875
FSD2M	5.25	3	2.875
FSD3M	5.25	3	2.875



CAT#	A	B	C
FSCS1M	6.0625	2.9375	2.125
FSCS2M	6.0625	2.9375	2.125
FSCS3M	6.0625	2.9375	2.125



CAT#	A	B	C
FSDD1M	6.0625	3	2.875
FSDD2M	6.0625	3	2.875
FSDD3M	6.0625	3	2.875



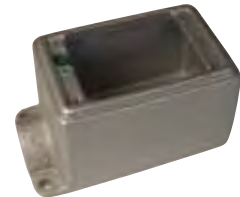
FS & FD CAST DEVICE BOXES

MALLEABLE IRON

TOPAZ CAT #	UPC#	SIZE	UNIT CTN	SHIP CASE	WT/ CASE
FS TYPE					
• SINGLE HUB					
FS1M	85196	1/2"	—	5	11
FS2M	85197	3/4"	—	5	12
FS3M	85198	1"	—	5	12



E195124



E195124



E195124



E195124

FD TYPE

- SINGLE HUB
- DEEP

FSD1M	85199	1/2"	—	5	14
FSD2M	85200	3/4"	—	5	14
FSD3M	85201	1"	—	5	14

FSC TYPE

- DUEL HUB

FSCS1M	85202	1/2"	—	5	11
FSCS2M	85203	3/4"	—	5	12
FSCS3M	85204	1"	—	5	12

FDC TYPE

- DUEL HUB
- DEEP

FSDD1M	85205	1/2"	—	5	14
FSDD2M	85206	3/4"	—	5	15
FSDD3M	85207	1"	—	5	15

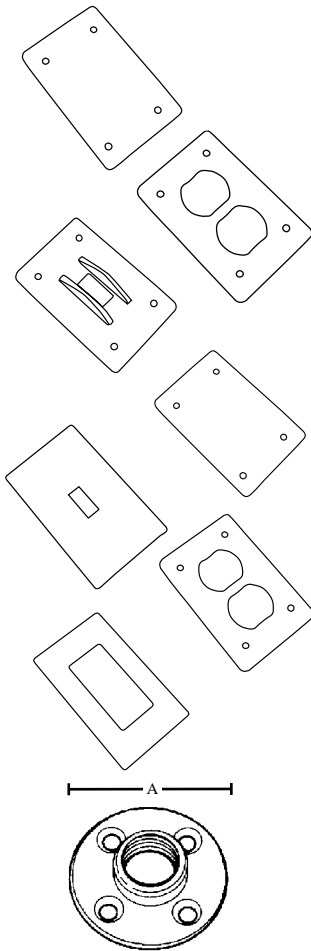
FS & FD CAST DEVICE BOX GASKET

NEOPRENE RUBBER

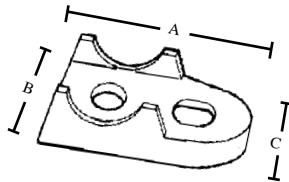
TOPAZ CAT #	UPC#	UNIT CTN	SHIP CASE	WT/ CASE
FSFDCG	17564	—	25	1



FS & FD CAST DEVICE BOX COVERS



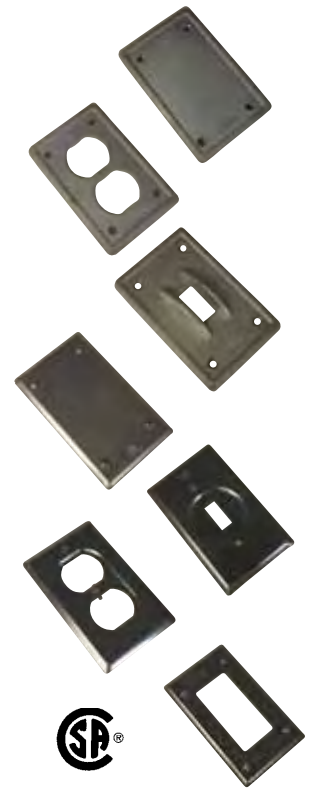
CAT#	A
291	3.000
292	3.375
293	3.625
294	4.000
295	4.375
296	4.875



CAT#	A	B	C
481	2.06	1.00	.50
482	2.38	1.06	.50
483	2.94	1.25	.56
484	3.50	1.88	.75
485	3.81	1.44	.81
486	4.75	1.94	1.00
487	5.75	2.44	.75
488	6.69	2.63	.88
489	7.13	2.88	1.06
489A	8.88	3.06	1.06
489B	10.13	3.75	.60
489C	12.19	4.00	.75

MALLEABLE IRON

TOPAZ CAT #	UPC#	UNIT CTN	SHIP CASE	WT/ CASE
• BLANK FSBCM	17557	—	25	14
• DUPLEX FSDRM	17559	—	25	14
• GUARDED SQUARE SWITCH FSGSM	17558	—	25	16
STEEL				
• BLANK FSBCS	17560	—	25	5
• UNGUARDED SQUARE SWITCH FSGSS	17561	—	25	4
• DUPLEX FSDRS	17562	—	25	4
• GFI FSGFIS	17563	—	25	3



RIGID FLOOR FLANGE PLATES

MALLEABLE IRON

TOPAZ CAT #	UPC#	SIZE	UNIT CTN	SHIP CASE	WT/ CASE
291	12420	1/2"	—	50	23
292	12430	3/4"	—	50	25
293	12440	1"	—	50	43
294	12450	1 1/4"	—	25	20
295	12460	1 1/2"	—	25	32
296	12470	2"	—	25	27

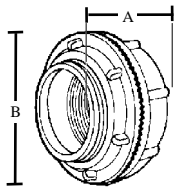


EMT/RIGID CLAMP BACKS

MALLEABLE IRON

TOPAZ CAT #	UPC#	SIZE	UNIT CTN	SHIP CASE	WT/ CASE
481	14510	1/2"	25	250	16
482	14520	3/4"	25	250	22
483	14530	1"	25	250	35
484	14540	1 1/4"	10	100	21
485	14550	1 1/2"	10	100	27
486	14560	2"	5	50	22
487	14570	2 1/2"	—	25	14
488	14580	3"	—	10	9
489	14590	3 1/2"	—	10	14
489A	14600	4"	—	10	18
489B	14601	5"	—	10	25
489C	14602	6"	—	10	30





RIGID WATERTIGHT HUBS INSULATED THROAT

• NEMA 2 3R, 4, 4X, 5, 12, 13

MALLEABLE IRON

TOPAZ CAT #	UPC#	SIZE	UNIT CTN	SHIP CASE	WT/ CASE
201M	11552	1/2"	25	250	49
202M	11562	3/4"	10	100	29
203M	11572	1"	10	100	29
204M	11582	1 1/4"	2	20	15
205M	11592	1 1/2"	2	20	16
206M	11602	2"	2	20	18
207M	11612	2 1/2"	—	2	4
208M	11622	3"	—	2	5
209M	11623	3 1/2"	—	1	5
210M	11632	4"	—	1	6
210MA	85555	5"	—	1	3
210MB	85556	6"	—	1	6



E148716

CAT#	A	B
201M	1.31	1.54
202M	1.37	1.73
203M	1.59	2.04
204M	1.59	2.42
205M	1.59	2.79
206M	1.59	3.30
207M	2.44	3.70
208M	2.44	4.39
209M	2.44	4.88
210M	2.44	5.50
210MA	3.50	6.80
210MB	3.59	8.18

ZINC DIE CAST

TOPAZ CAT #	UPC#	SIZE	UNIT CTN	SHIP CASE	WT/ CASE
201	11550	1/2"	25	250	47
202	11560	3/4"	10	100	27
203	11570	1"	10	100	40
204	11580	1 1/4"	2	20	10
205	11590	1 1/2"	2	20	13
206	11600	2"	2	10	17
207	11610	2 1/2"	—	5	3
208	11620	3"	—	5	4
209	11630	3 1/2"	—	5	4
210	11640	4"	—	1	5



E148716

CAT#	A	B
201	1.31	1.54
202	1.37	1.73
203	1.59	2.04
204	1.59	2.42
205	1.59	2.79
206	1.59	3.30
207	2.44	3.70
208	2.44	4.39
209	2.44	4.88
210	2.44	5.50

W/BONDING SCREW

TOPAZ CAT #	UPC#	SIZE	UNIT CTN	SHIP CASE	WT/ CASE
201B	11551	1/2"	25	250	19
202B	11561	3/4"	10	100	27
203B	11571	1"	10	100	40
204B	11581	1 1/4"	2	20	11
205B	11591	1 1/2"	2	20	14
206B	11601	2"	2	20	18
207B	11611	2 1/2"	—	2	3
208B	11621	3"	—	2	4
209B	11631	3 1/2"	—	1	4
210B	11641	4"	—	1	5



E148716

CAT#	A	B
201B	1.31	1.54
202B	1.37	1.73
203B	1.59	2.04
204B	1.59	2.42
205B	1.59	2.79
206B	1.59	3.30
207B	2.44	3.70
208B	2.44	4.39
209B	2.44	4.88
210B	2.44	5.50

COMBINATION COUPLINGS

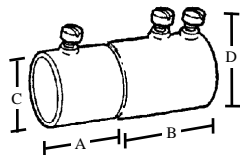
• SET SCREW TYPE

STEEL

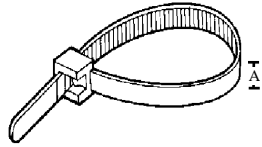
TOPAZ CAT #	UPC#	SIZE	UNIT CTN	SHIP CASE	WT/ CASE
391S	70210	1/2"-1/2"	25	250	40
392S	70220	3/4"-3/4"	10	100	23
393S	70230	1"-1"	10	100	40



E148716



CAT#	A	B	C	D	SCREWS
391S	.850	1.200	.720	.855	2
392S	1.000	1.310	.940	1.065	2
393S	1.270	1.530	1.170	1.320	3



CABLE TIES

6/6 NYLON

TOPAZ CAT #	UPC#	SIZE	MIN TENSILE STRENGTH	PER BAG	SHIP CASE	WT/ 100
-------------	------	------	----------------------	---------	-----------	---------

NATURAL WHITE

NT0418	21440	4"	18	100	1000	.10
NT0530	21450	5"	30	100	1000	.10
NT0618	21451	6 1/2"	18	100	1000	.41
NT0640	21452	6"	40	100	1000	.41
NT0750	21460	7"	50	100	1000	.42
NT0818	21470	8"	18	100	1000	.34
NT0840	21480	8"	40	100	1000	.38
NT08120	21490	8"	120	100	1000	.43
NT1150	21500	11"	50	100	1000	.54
NT1450	21510	14"	50	100	1000	.69
NT24175	21530	24"	175	50	500	2.82
NT30175	21532	30"	175	50	500	3.22
NT34175	21550	34"	175	50	500	4.20

BLACK

BT0418	19770	4"	18	100	1000	.10
BT0530	19780	5"	30	100	1000	.10
BT0618	19781	6 1/2"	18	100	1000	.41
BT0750	19790	7"	50	100	1000	.42
BT0818	19800	8"	18	100	1000	.34
BT0840	19810	8"	40	100	1000	.38
BT1150	19830	11"	50	100	1000	.54
BT1450	19840	14"	50	100	1000	.69
BT24175	19860	24"	175	50	500	2.82
BT34175	19890	34"	175	50	500	4.20

CAT#	BUNDLE DIAMETER		A
	MIN	MAX	
NT0418	.0625	.875	.98
NT0530	.0625	1.378	.98
NT0618	.0625	1.378	.98
NT0640	.0625	1.535	.142
NT0750	.0625	1.75	.187
NT0818	.0625	2.00	.100
NT0840	.0625	2.00	.130
NT08120	.0625	2.00	.300
NT1150	.0625	3.00	.187
NT1450	.0625	4.00	.187
NT24175	.1875	7.20	.345
NT30175	.1875	9.30	.35
NT34175	.1875	7.20	.345

BT0418	.0625	.875	.100
BT0530	.0625	1.378	.98
BT0618	.0625	1.378	.98
BT0750	.0625	1.75	.187
BT0818	.0625	2.00	.100
BT0840	.0625	2.00	.130
BT1150	.0625	3.00	.187
BT1450	.0625	4.00	.187
BT24175	.1875	7.20	.345
BT34175	.1875	7.20	.345



OPERATING TEMPERATURES

MIN	MAX
-40°F	185°F

UL Flame Rating 94V-2.

OPERATING TEMPERATURES

MIN	MAX
-40°F	185°F

UL Flame Rating 94V-2.
UV Resistance

AIR HANDLING CABLE TIES

6/6 NYLON

TOPAZ CAT #	UPC#	SIZE	COLOR	MIN TENSILE STRENGTH	PER BAG	SHIP CASE	WT/ 100
PTB0750	83642	7 1/2"	BURGUNDY	50	100	1000	.42
PTB1150	83644	11"	BURGUNDY	50	100	1000	.54
PTB1450	83646	14 1/2"	BURGUNDY	50	100	1000	.69

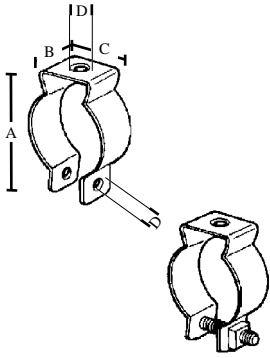


CAT#	BUNDLE DIAMETER		A
	MIN	MAX	
PTB0750	.0625	1.875	.180
PTB1150	.0625	3.062	.180
PTB1450	.0625	4.125	.180

- Applications: Air Handling Spaces, above drop ceilings and below raised flooring.
- Meets UL 1565 low smoke generation, low heat release, and mechanical strength test.
- UL Listed suitable for use in Air Handling Spaces in accordance with the Section 300.00 (C) and (D) of the National Electrical Code and Rules 12-010 (3), (4), and (5) and 12-020 of the Canadian Electrical Code, Part 1.
- Strong and Pure manufactured from filtered nylon 6/6 reducing particle contamination.
- Mounting Hole Style secures and positions wire bundles, cables, etc. to surfaces with one mechanical fastener.
- Low Profile Style reduced head height increases safety, eliminates snags, cuts, and abrasions to cables, surrounding products, and users.



CONDUIT HANGERS



CAT#	A	B	C	D
611/601	1.875	.750	.725	.25
612/602	2.125	.750	.850	.25
613/603	2.437	.875	.975	.25
614/604	2.75	.875	.975	.25
614A/604A	2.875	.875	1.050	.25
615/605	3.125	1.000	1.125	.25
616/606	3.875	1.000	1.145	.25
617/607	4.625	1.250	1.225	.3125
618/608	5.500	1.250	1.275	.3125
619/609	5.750	1.250	1.275	.3125
620/610	6.250	1.250	1.275	.3125

STEEL

TOPAZ CAT #	UPC#	TRADE SIZE	FOR RIGID	FOR EMT	BOLT SIZE	SHIP CASE	WT/ CASE
WITH BOLTS & NUTS ATTACHED							
601	15830	0	3/8"-1/2"	1/2"	1/4-20	100	6
602	15840	1	3/4"	3/4"	1/4-20	100	8
603	15850	2	1"	1"	1/4-20	100	8
604	15860	3	1 1/4"	1 1/2"	1/4-20	100	10
604A	15870	2 1/2	---	1 1/4"	1/2-20	100	10
605	15880	4	1 1/2"	---	1/2-20	100	18
606	15890	5	2"	2"	1/2-20	50	10
607	15900	6	2 1/2"	2 1/2"	5/16-18	50	11
608	15910	7	3"	3"	5/16-18	25	6
609	15920	8	3 1/2"	3 1/2"	5/16-18	25	8
610	15930	9	4"	4"	5/16-18	25	12



E174011

WITHOUT BOLTS & NUTS

611	15940	0	3/8"-1/2"	1/2"	---	100	5
612	15950	1	3/4"	3/4"	---	100	7
613	15960	2	1"	1"	---	100	7
614	15970	3	1 1/4"	1 1/2"	---	100	9
614A	15980	2 1/2	---	1 1/4"	---	100	9
615	15990	4	1 1/2"	---	---	100	17
616	16000	5	2"	2"	---	50	9
617	16010	6	2 1/2"	2 1/2"	---	50	11
618	16020	7	3"	3"	---	25	5
619	16030	8	3 1/2"	3 1/2"	---	25	7
620	16040	9	4"	4"	---	25	11



E174011

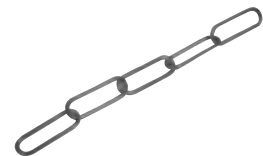


FLUORESCENT CHAIN

CAT#	WORKLOAD LIMITS
FC1	50 LBS.

STEEL

TOPAZ CAT #	UPC#	SIZE	UNIT CTN	SHIP CASE	WT/ CASE
FC1	20750	1 YARD LENGTHS	1 YD.	100	35



JACK CHAIN

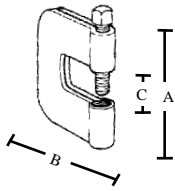
CAT#	WORKLOAD LIMITS
297	16 LBS.
298	29 LBS.
298S	29 LBS.
299	29 LBS.
299B	43 LBS.

• ZINC PLATED

STEEL

TOPAZ CAT #	UPC#	SIZE	UNIT CTN	SHIP CASE	WT/ CASE
297	12480	14 GAUGE - LIGHT	100 FT.HANKS	10	50
298	12490	12 GAUGE - STANDARD	50 FT.HANKS	10	30
298S	12500	12 GAUGE - STANDARD	100 FT.SPOOLS	4	48
299	12501	12 GAUGE - STANDARD	250 FT.SPOOLS	4	60
299B	12505	10 GAUGE - HEAVY	100 FT.HANKS	1	18





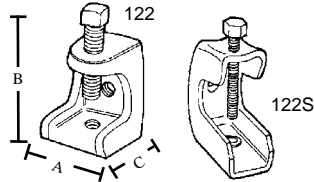
CAT#	A	B	C
126	2.40	2.49	.73

I-BEAM CLAMP C CLAMP

• CLAMP IS TAPPED FOR ROD

STEEL

TOPAZ CAT #	UPC#	SIZE	TAPPING	UNIT CTN	SHIP CASE	WT/ CASE
126	10820	3/4"	3/8" - 16	10	100	30



CAT#	A	B	C	TIGHTEN TORQUE
122	1.130	1.400	1.390	60
123	1.990	1.755	1.890	125
123A	1.130	1.400	1.390	60
124	2.530	2.140	2.500	250

BEAM CLAMPS

MALLEABLE IRON

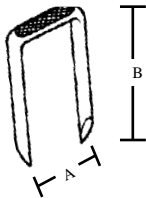
TOPAZ CAT #	UPC#	JAW OPENING	TAPPING	LOAD CAPACITY	UNIT CTN	SHIP CASE	WT/ CASE
122	10710	3/4"	1/4" - 20	125 LBS.	-	50	11
123	10720	7/8"	3/8" - 16	300 LBS.	-	50	23
123A	10721	3/4"	3/8" - 16	300 LBS.	-	50	18
124	10730	1 1/8"	1/2" - 13	600 LBS.	-	25	40

STEEL

122S	10740	11/16"	1/4" - 20	50 LBS.	-	100	22
123S	10750	1"	3/8" - 16	100 LBS.	-	50	20



E174011



CAT#	A	B
183	.500	1.0
183i	.500	1.0
184	.500	1.0
184i	.500	1.0
185	.500	1.0
185i	.500	1.0
193	.500	1.25
194	.500	1.25
195	.5005	1.25
196	.82	1.40
197	.82	1.40
186	1.0625	1.4375
198	1.3438	1.875

CABLE STAPLES

STEEL

TOPAZ CAT #	UPC#	SIZE	UNIT CTN	SHIP CASE	WT/ CASE
FOR NMC 2 WIRE #14-12					
183	11440	1/2"	100	5000	25
183i*	11441	1/2"	100	5000	26
184	11450	1/2"	500	5000	25
184i*	11442	1/2"	500	5000	26
185	11460	1/2"	BUCKET	5000	26
185i*	11445	1/2"	BUCKET	2500	13
FOR NMC AND ARMORED 3 WIRE #14-12-10					
193	11470	9/16"	100	5000	33
194	11480	9/16"	500	5000	31
195	11490	9/16"	BUCKET	5000	35
FOR SEU TO 3 #6					
196	11492	13/16"	100	5000	61
197	11494	13/16"	500	5000	61
186	11443	1-11/16"	100	1000	15
198	11444	1-11/32"	100	1000	32

*Insulated



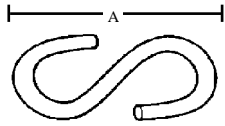


COVER PLATE

- BAKED WHITE ENAMEL
- 2-8/32" SCREWS

CAT#	
175	3 1/2" Screw Separation
176	2 3/4" Screw Separation

TOPAZ				STEEL		
CAT #	UPC#	SIZE	UNIT CTN	SHIP CASE	WT/ CASE	
175	33510	5"	1 PER BAG	100	18	
176	33511	5"	1 PER BAG	100	18	

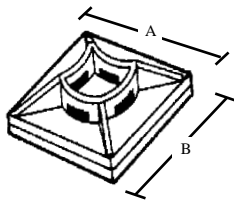


S HOOKS

- ZINC PLATED

CAT#	G	A	WORKLOAD LIMITS
300	14 GA	.96	16 LBS.
300A	12 GA	1.23	29 LBS.
300B	10 GA	1.48	43 LBS.

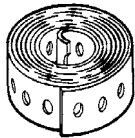
TOPAZ				STEEL		
CAT #	UPC#	SIZE	DUTY	UNIT CTN	SHIP CASE	WT/ CASE
300	12510	14 GAUGE	LIGHT	100	1000	11
300A	12520	12 GAUGE	MEDIUM	100	1000	15
300B	12525	10 GAUGE	HEAVY	100	1000	19



CABLE TIE MOUNTING PLATFORMS

CAT#	MOUNTING HEAD		FLAT MOUNTING HEAD		SCREW
	A	B	HEIGHT	HOLE	
MP4A	1.00	1.00	.157	.197	#6
MP4S	1.00	1.00	.157	.197	#6
MP4AB	1.00	1.00	.157	.197	#6
MP4SB	1.00	1.00	.157	.197	#6

TOPAZ				NYLON		
CAT #	UPC#	SIZE	UNIT CTN	SHIP CASE	WT/ CASE	
NATURAL WHITE						
MP4A	32270	4 WAY ADHESIVE BASE	100	1000	5	
MP4S	32280	4 WAY SCREW MOUNT	100	1000	5	
BLACK						
MP4AB	32320	4 WAY ADHESIVE BASE	100	1000	5	
MP4SB	32330	4 WAY SCREW MOUNT	100	1000	5	



PERFORATED BAND IRON

- 20 GA

CAT#	
962	1/4" HOLES ON 1/2" CENTER

TOPAZ				STEEL		
CAT #	UPC#	SIZE	UNIT CTN	SHIP CASE	WT/ CASE	
962	19570	3/4" x 10'	—	50	30	

