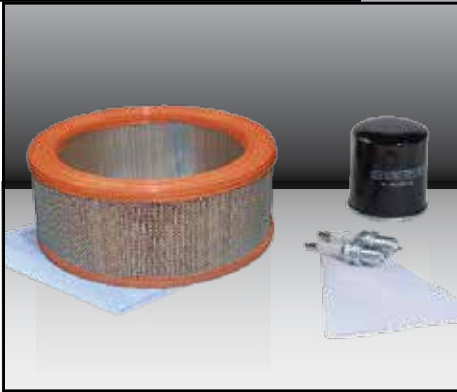


ENHANCE
PERFORMANCE

MAXIMIZE
CONVENIENCE

SIMPLIFY
MAINTENANCE

**ACCESSORIES
CATALOG**



better **power.** more choices.

Enhance your Generac standby generator's performance with accessories from the leader in standby power. Products are available to maximize convenience and simplify maintenance for years of reliable standby power.

Generac Power Systems



REMOTE MONITORING OPTIONS



Basic



Advanced

Nexus™ Wireless Remote Monitor

No need to go outside during inclement weather to check the generator status. Generac's wireless remote gives you instant status updates without ever leaving the house. Available for use on generators 8-150 kW*. Choose from two option:

ADVANCED

- LCD, trilingual display
- Sleek appearance with flush LED indicator for smooth contour
- Virtually full control panel simulated control pad
- A/C powered with battery back-up
- Includes cradle for desk or wall mounting

BASIC

- Small and compact, approximately the width and height of a credit card
- Indicator lights and audible cues relay generator status
- Audible feature when attention is needed or battery is low
- Magnetic back for refrigerator mounting
- Completely wire-free, battery powered

*Remote monitor adapter required for 22 kW to 150 kW.
Not compatible with CorePower or Centurion ES models.

GENERATOR MAINTENANCE

A scheduled maintenance program will ensure that your system is always in top operating condition and that your warranty requirements are met. Please refer to the service chart for our recommended service and maintenance schedule.



Scheduled Maintenance Kits

Generac offers a comprehensive line of scheduled maintenance kits to ensure long life and top performance of your standby generator system. Kits include:

Kit contents may vary by model.

- Air Filter
- Oil Filter
- Spark Plug(s)
- Oil Funnel
- Reminder Sticker
- Chamois

COLD WEATHER KITS

*Optimize the performance of your standby generator in colder climates. Kit consists of battery warmer with an automatically controlled thermostat built in. When temperatures fall below an acceptable level, the thermostat activates the battery warmer, maintaining optimum battery temperature, and also activates the crank case oil heater for smooth engine starting.**



Cold Weather Kit

Highly recommended for areas where the temperature drops below 32° F. Air-cooled kits also include an adhesive engine crankcase warmer.

Extreme Cold Weather Kit *(Liquid-cooled units only)*

Includes block heater for climates where the temperature falls below 32° F for extended periods of time. To be used in conjunction with the appropriate cold weather kit.

* Air-cooled units only.

LOAD MANAGEMENT OPTIONS



DLM™ Module

Manage up to four additional large 240V loads by adding individual DLM modules. These modules are 50 amps each and are housed in a NEMA 3R enclosure, giving the option to install them anywhere inline indoors or outdoors between the panel and appliance. After loads are shed, they are brought back individually to assure generator capacity and eliminate the potential for overload.



Auxiliary Transfer Switch Contacts

Manage the operation of your standby power supply efficiently. The auxiliary transfer switch contact kit allows a single large electrical load to be locked out from generator operation. If a home is equipped with electrical heat or multiple central air conditioning units, this device allows the generator transfer switch to interrupt the appliance's control wire, breaking the signal needed for the appliance to start. Works with 100-200 amp switches.

MISCELLANEOUS



Battery

Every standby generator requires a battery to start the system. Generac offers the recommended 26R, wet cell battery for use with all air-cooled standby product.



Base Plug Kits

The base plug kits offer an easy way to fill the lifting holes in the liquid-cooled generator base. Create a streamlined look and protect your generator from weather and animal-related damage.

Paint Kits

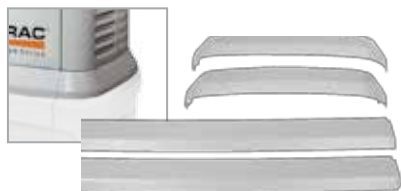
The enclosure is the generator's first line of defense against the elements and it's important to keep it in good condition. Touch up scratches and other damage to protect from future corrosion. Kits include the necessary paint to properly maintain or touch up a generator enclosure. Please check with your sales representative to verify proper color coordination.



Air-cooled Generator Transport Cart

Moving a 400 lb generator can be hard work. The Generator Transport Cart will assist with moving the generator from the truck to the installation site. Allows for a single person to easily maneuver any air-cooled product to the desired location.

- Works with all Generac, Guardian Series and Centurion air-cooled models
(Excludes CorePower and Centurion ES Series).



Fascia for Air-cooled Units

Complement the contoured enclosure with a fascia base wrap that snaps together around the bottom of the generator. Fascia continues the sleek, contoured appearance as well as offering protection from rodents and insects by covering the lifting holes located in the base. Standard on 20 kW air-cooled model. Available in grey or bisque.
(Excludes CorePower and Centurion ES Series).



Extended Warranty Option

Up to five years extended warranty coverage available through Generac Industrial and Residential/Commercial Dealers.

Air-Cooled Service Schedule

ATTENTION: It is recommended that all service work be performed by an Authorized Dealer.

SYSTEM COMPONENT	PROCEDURE			FREQUENCY
X = Action R = Replace as necessary	Inspect	Change	Clean	W = Weekly M = Monthly Y = Yearly
FUEL				
Fuel line and connection	X			M
LUBRICATION				
Oil level	X			M
Oil		X		Every 200 Hours* and Y
Oil filter		X		Every 200 Hours* and Y
COOLING				
Enclosure louvers	X		X	W
BATTERY				
Remove corrosion, ensure dryness	X		X	M
Clean and tighten battery terminal	X		X	M
Check charge status	X	R		Every 6 M
Electrolyte level (unsealed batteries only)	X	R		Every 6 M
ENGINE AND MOUNTING				
Air cleaner	X	R		Y
Spark plug(s)	X	R		Y
GENERAL CONDITION				
Vibration, noise, leakage, temperature	X			M
COMPLETE TUNE-UP		To be completed by an Authorized Dealer		Y

* Change oil and filter after first 8 hours of operation and then every 200 hours or two years thereafter.
Change sooner when operating under a heavy load or in a dusty or dirty environment or in high ambient temperatures.

REMOTE MONITORING OPTIONS	
Model	Description
5928	Basic Nexus™ wireless monitor
5951	Advanced Nexus™ wireless monitor
5958	Remote QT adapter harness* (use w/5928)
5959	Advanced remote QT adapter harness* (use w/5951)

AIR-COOLED SCHEDULED MAINTENANCE KIT	
Model	Description
6003	CorePower, 7 kW, 432 cc kit
6004	EcoGen, 6 kW 530 cc kit
5662	8 kW, 410 cc kit
5663	10 kW, 530 cc kit
5664	12,13, 14,15, 16 kW, 17 & 18 kW, 760/990cc kit
5665	20 kW, 999 cc kit

LIQUID-COOLED SCHEDULED MAINTENANCE KIT	
Model	Description
5655	1.6L - 25 & 30 kW **
5656	2.4L - 22, 27 & 45 kW **
5658	4.2L - 48 kW
5984	2.4L - 36 & 60 kW
6172	2.4L - 45 kW
6171	2.4L - 60 kW

* Required for use with Nexus wireless monitors on models 22-60 kW.
** For current production models. Contact Generac Service for older models.

AIR-COOLED COLD WEATHER KIT		
Model	Description	Contents
5863	For air-cooled units with 990/999 engine mfg before 4/2010	Crankcase warmer
5864	For air-cooled units with 410/530 engine mfg before 4/2010	Crankcase warmer
5865	For CorePower 7 kW air-cooled units	Battery wrap w/ internal thermostat & crank case heater
5947	For air-cooled units with 990/999 engine mfg after 4/2010	Battery pad w/ internal thermostat & crank case heater
5948	For air-cooled units with 410/530 engine mfg after 4/2010	Battery pad w/ internal thermostat & crank case heater
LIQUID-COOLED COLD WEATHER KIT		
Model	Description	Contents
5629	For 1.6L engines	28" Battery warmer w/oil filter
5630	For 2.4L engines	28" Battery warmer, zip ties, thermostat
5631	For 4.2L engines	44" Battery warmer, zip ties, thermostat
5632	For 3.0, 4.6, 6.8L direct drive units	44" Battery warmer, zip ties, thermostat
5633	For 6.8L gear drive units	44" Battery warmer, zip ties, thermostat & gear oil

LIQUID-COOLED EXTREME COLD WEATHER KIT			
Model	Description	Contents	Use With
5615	25, 30 kW (1.6L)	Block heater & associated mounting hardware	5629
5616	22, 27, 36, 45 & 60 kW (2.4L)	Block heater & associated mounting hardware	5630
5618	48 kW - both 1800 RPM (4.2L)	Block heater & associated mounting hardware	5631
5619	80 kW (4.6L)	Block heater & associated mounting hardware	5632
5620	70, 100 & 130 kW (6.8L)	Block heater & associated mounting hardware	5633
5667	150 kW (6.8L)	Block heater & associated mounting hardware	5632

LOAD MANAGEMENT OPTIONS		
Model	Description	Contents
5621	Auxiliary transfer switch contact kit (100 & 200 Amp)	Contact, screws, and washers
5937	Digital Load Management (DLM) Module	Module for Nexus Smart Switch™

MISCELLANEOUS	
Model	Description
5651	Base plug for all liquid-cooled models
5654	Grey paint kit for air-cooled units mfg after 4/08
5653	Tan paint kit for air-cooled units mfg after 4/08
5703	Bisque paint kit for air-cooled units mfg after 4/08
5704	Medium grey paint kit for air-cooled units mfg after 4/08
5685	Air-cooled generator transport cart
5666	Grey Fascia for air-cooled units
5839	Bisque Fascia for air-cooled units
5819	26R Battery 6-60 kW (excluding 48 kW)
6016	EcoGen 240V Conversion Kit

Ordering Information
Order online or through your inside sales representative.



Innovative Products from the **MARKET LEADER**

For over 50 years, Generac Power Systems has led the industry with innovative design and superior manufacturing. When it comes to developing products that are both durable and reliable, we stand head and shoulders above our competition. The result of our efforts can be seen in every inch of our product offerings. Generac sells more home standby generators than all of its competitors combined!

Generac's Customer **COMMITMENT**

Generac's commitment to its customers extends beyond the generator purchase. A nationwide dealer network, staffed with factory trained technicians, provides unsurpassed service and support. They also maintain inventories of Generac parts and accessories so your home continues to be protected from power outages for years to come.

GENERAC®

Generac Power Systems, Inc.
S45 W29290 Hwy. 59
Waukesha, WI 53189
1-888-GENERAC (1-888-436-3722)

generac.com



Bulletin 0178160SBY Printed in USA Rev. 11/2011
©2013 Generac Power Systems, Inc. All rights reserved.
Specifications are subject to change without notice