

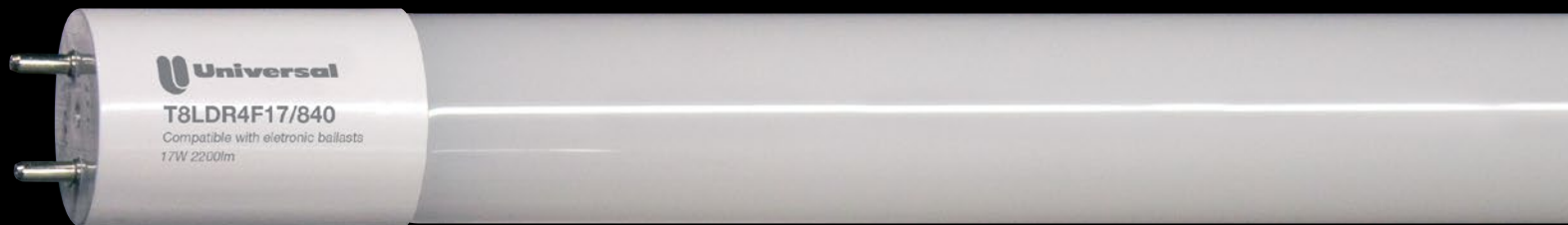


LED LINEAR TUBE | **AFFORDABLE**



EVERLINE

*The average commercial building contains over **300** linear fluorescent lamps. Now, imagine you replace the older fluorescent technology with newer LED technology for immediate energy savings and less maintenance. **Brilliant!***



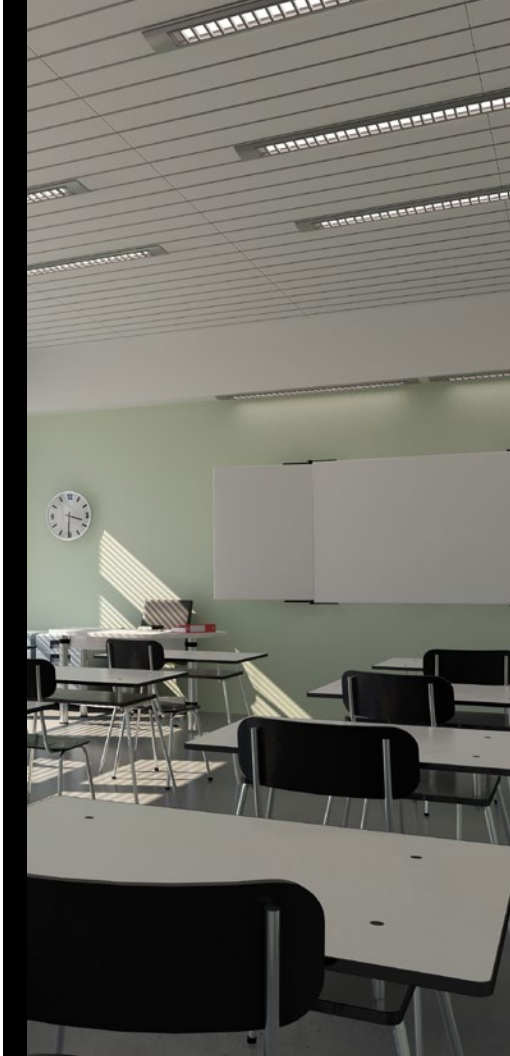
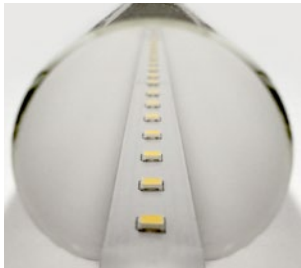


LED LINEAR TUBE | **AFFORDABLE**

For Linear Fluorescent Lamp Replacement

Universal's LED Linear T8 Tubes are ideal for T8 fluorescent lamp replacement - installing directly into existing fixtures that have electronic T8 ballasts. These replacement tubes provide ease of installation, immediate energy savings of 30% or more, and low maintenance (because of their long life, with a 50,000+ hour lifetime at L70). Featuring a seamless glass design and a wide 240° light distribution, they will meet a variety of application needs. LED replacement tubes offer a low initial cost to an LED retrofit using existing compatible Instant Start, or Programmed Start ballasts. The tubes are mercury free and RoHS compliant.

Universal makes the replacement decision easy with a variety of LED replacement options, industry-leading reliability, and a 5 year warranty. For replacing traditional lighting with more efficient LED technology – choose Universal!



ORDERING Example: T8LDR4F14/850A25C

Series	Lamp & Length	CRI (nom.)	CCT	Packaging Qty
T8LDR = T8 Tube Replacement	4F17 = 4', 17W, 2200 Lumens	8 = 82 (nom.)	35 = 3500K	A25C = 25 per Package
	4F15 = 4', 15W High Efficiency, 2200 Lumens		40 = 4000K	
	4F14 = 4', 14W, 1800 Lumens		50 = 5000K	
	4F12 = 4', 12W High Efficiency, 1800 Lumens			
	3F11 = 3', 11W, 1450 Lumens*			
	2F9 = 2', 9W, 1150 Lumens			

- Lumens are nominal lumens with a .88 ballast factor ballast

* DLC does not offer a certification for 3ft LED tubes

SYSTEM PERFORMANCE

Description	Model Number	Bare Lamp Watts	Watts/Tubes			DLC		
			Ballast Factor			Ballast Factor		
Standard			.77	.88	1.18	.77	.88	1.18BF
T8LED17W 2200LM 4FT	T8LDR4F17/8xx	17	17	21	29	1860	2200	2950
T8LED14W 1800LM 4FT	T8LDR4F14/8xx	14	15	17	23	1500	1800	2400
T8LED11W 1450LM 3FT	T8LDR3F11/8xx	11	11	13	N/A	1190	1450	N/A
T8LED9W 1150LM 2FT	T8LDR2F9/8xx	9	9	10	N/A	940	1150	N/A
High Efficiency								
T8LED15W 2200LM 4FT	T8LDR4F15/8xx	15.5	16	19	26	1860	2200	2950
T8LED12W 1800LM 4FT	T8DR4F12/8xx	12.5	14	16	22	1500	1800	2400

- Average performance per Tube

- Performance will vary based on tube quantity and actual ballast used.

Data Subject to change without notice



EVERLINE® LED Linear T8 Tubes

Universal makes it easy to upgrade your linear fluorescent fixtures to an LED solution with EVERLINE® LED T8 Tubes including standard and high efficiency tubes.

EVERLINE® LED T8 Tubes + Compatible “LED Ready” Ballasts

Universal offers a comprehensive line of electronic “LED Ready” T8 ballasts which are engineer tested to work with the EVERLINE® LED Linear Tubes. Just look for the “LED Ready” endorsement. Visit www.unvlt.com for information about our Linear Replacement LED kits which include two EVERLINE® LED Tubes, the compatible electronic “LED Ready” T8 Ballast, and Simple Instructions. These bundled kits (Tubes + Ballast) make it even easier to retrofit to LED.

EVERLINE® LED Retrofit Kits

Beyond a single EVERLINE® LED Tube &/or Ballast replacement, Universal also offers the EVERLINE® LED Retrofit Kit with: (2) EVERLINE® LED Lensed Modules (1) LED EVERLINE® Driver (0-10V dimming), Wiring Harness, Installation Hardware and Simple Instructions.

Rebate Qualifying

Universal makes it easy to upgrade, qualify for available rebates, and comply with energy regulations. Plus, the Linear LED T8 Tubes are UL listed for use in the U.S. and Canada.



For a list of DesignLights Consortium™ QPL listed products please visit www.designlights.org/qpl/en/saved/UBU24XJ

For nearly every application where considerations include: efficiency, payback, performance and price – Universal offers the right LED Replacement solution. Solutions include: EVERLINE® LED Linear Tubes, EVERLINE® Tubes + “LED Ready” Ballast, and the EVERLINE® LED Retrofit Kit. Talk to your Universal Agent today to discuss the options, or visit www.unvlt.com.



EVERLINE[®]

*Universal makes the retrofit decision easy with a variety of good to best LED replacement solutions
LED Linear Tubes, Tubes + “LED Ready” Ballasts, & LED Retrofit Kits.*

