



## Perimaliter® Wallpacks

Perimaliter III PVL3 / PGM3 • Perimaliter II PGL



Solutions for Perimeter/Area Lighting



# Perimaliter® Wallpacks

The Perimaliter wallpack has been the design leader in refractor wallpacks for the past 20 years. The construction, optical characteristics and quality manufacture make the Hubbell Perimaliter the most desired refractor solution for perimeter/area lighting from a wall mount. Perimaliter III PVL3 and PGM3 features:



## Energy-Saving LED

- LED units provide 60-70% energy savings over traditional wallpack systems producing 60LPW (lumens per watt)
- PVL3 LED and PGM3 LED uses only 69w (700mA)
- Lateral spread allows typical spacing of three to four times mounting height with excellent uniformity
- PGM Produces over 4100 lumens out of the fixture at nominal 5000K with asymmetric distribution for typical mounting heights of 10-15 feet
- Available in 4000K and 5000K color temperature

## Wire Access

- UL required 1.75" minimum back opening for wiring access and inspection
- Side 1/2" hubs for feed thru surface conduit
- Top 1/2" hub for conduit or button photo control

## Refractor Selection

- Vandal resistant polycarbonate (PVL)
- Borosilicate glass (PGL)

## Perimaliter® III PVL3

69-150w



### Vandal Resistant – High Performance Wallpack

#### Refractor/Door Assembly

- One-piece injection molded UV stabilized polycarbonate
- Sharp prism design – Distributes lumens at exact angles, engineered for spacings up to 6 times mounting height
- Dark Bronze finish is painted on inside of door so projectile impacts will not mar the appearance
- Four point door compression provides seal against moisture and insects, certified for wet locations
- HubbellGard™ fasteners have external coating to prevent chemical interaction in the cast aluminum housing, allows easy service and eliminates screw "Freezing" or "Bonding"
- New improved bottom hinges have been strengthened for durability and years of maintenance-free operation
- 150w pulse start max/ medium base lamp (increases lamp to lens distance) - PVL3 reduces lens UV and heat exposure for longer life



#### LED System



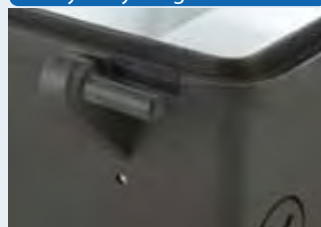
A thirty LED light engine produces over 4100 lumens at 5000K with asymmetric distribution. Optional 10KA surge protection available as an option.

#### Polycarbonate Refractor



One-piece front, impact resistant, sharp prism performance.

#### Heavy Duty Hinges



NEW – Two-piece hinge design provides increased strength – resists shipping/installation/maintenance damage.

#### 1/2" Conduit Hubs



1/2" tapped hubs with gasketed plug. PVL3 and PGM3 feature two side hubs and one top hub for superior access.



## Lighting Distribution

- Vertical HID lamp reduces "Hot spot" beneath fixture and provides more lateral lumens for better uniformity
- Wide lateral spacing allows less fixtures to be installed or provides greater light levels and uniformity from closer mounting locations

## Results

- Vertical illumination fills application space, increasing pedestrian perception of safety and security
- Eliminates dark walls and "hiding" places

## Certified

- Listed to UL1598 for use in wet locations



69-250w

Perimaliter® III PGM3

## Glass Refractor Wallpack for Wide Spacing Applications Refractor/Door Assembly

- Borosilicate glass refractor, non-yellowing
- Energy-saving 69w LED and HID systems up to 250w
- Engineered for spacings up to 6 times mounting heights
- Glass is silicone sealed to die-cast aluminum door
- 800 series polyester powder paint provides rugged, lasting appearance; Multiple finish selections available
- Four point door compression closure provides seal against moisture and insects, certified for wet locations
- HubbellGard™ fasteners have external coating to prevent chemical interaction on the cast aluminum housing, allows easy service while eliminating screw "Freezing" or "Bonding"
- Robust bottom hinges for durability and years of maintenance free operation

### Button Photo Control Accessory



Top hub makes PBT Photo control installation easy.

### Secure Mounting



Two back knockouts 9" on center for rigid installation. 1.75" rear wire access with grommet.

### Borosilicate Glass Refractor



Heat resistant, non-yellowing prism design for wide spacing.

### Ballast Assembly (HID only)



Identification and electrical data clearly presented on ballast cover inside fixture door. Medium base-up socket provides maximum light output, life and uniformity.

### EM Bayonet Socket (HID only)



**EM** – EM option, a separate double contact bayonet socket for use with back up generators (By others.) (Lamp not included)

**QSS** – EM socket above plus transfer relay. Senses a lamp that will not re-strike, triggers power to EM socket.

### Large application PGL, heavy-duty rugged design. Powered by Pulse-Start for energy savings

The **PGL** family provides higher wattage systems for typical mounting heights of 20-30 feet. This series has many of the same features as the smaller Perimaliter III series and shares the same door and borosilicate glass refractor with the **PGM3**. The housing is nearly 2" deeper to accommodate the higher wattage ballast systems.

#### Wiring Access

The **PGL** has the same 1/2" wiring hubs on each side but the PBT button photo control hub is located on the left side (as you face the unit).

#### Optics

All sockets are vertical, mogul base.

#### Systems

**PGL** is available in 250w and 350w PSMH and 250w and 400w HPS.

#### Options

**EM** Egress option – A separate double contact bayonet socket for use with back up generators. These systems allow some level of light during power failures as soon as a building's generator begins to operate.

**QSS** Standby option- senses if the main lamp is operating when power is available. After a momentary voltage dip, many HID lamps will go off and will not immediately re-strike. This relay switches the power to a DC bayonet socket to power up to a 250w quartz lamp (not included). When the main lamp does strike, the **QSS** system automatically shuts down.



Isolated Ballast Components



PGL Vertical Lamp Optics



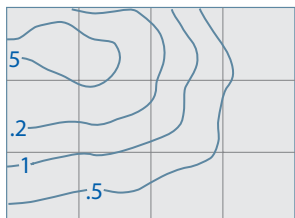
Borosilicate Glass Refractor



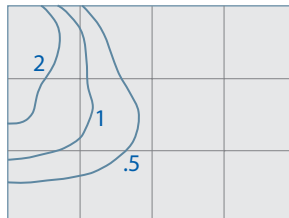
PGL PC/Conduit Hubs



### Typical Photometrics – 150 PSMH at 15 feet



**Vertical Lamp Perimaliter®** – Wide lateral spacings 6 times mounting height for 1 FC minimum between fixtures



**Horizontal Lamp Wallpack** – Mostly forward throw 4 times mounting height spacing for 1FC minimum between fixtures





69-150w

Perimaliter® III PVL3

- One-piece removable polycarbonate lens/door assembly, internally painted for lasting appearance
- 6-to-1 spacing to mounting height ratio; Two HubbellGard® fasteners provide weathertight seal to housing
- Die-cast aluminum housing for rugged mounting and heat dissipation; 1/2" feed-thru hubs and top photo control hub provided for field installations; standard mount over recessed wiring boxes
- Specular reflector, vertical lamp and refractor combine for efficient and uniform perimeter lighting
- Energy-saving 69w LED and HID systems up to 150w (50hz ballastry available)
- For HID socket is porcelain medium base with spring-loaded center contact
- Accessories: Photo controls/ Full cut-off visors
- Listed to UL 1598 for use in wet locations



## Ordering Information

### ORDERING EXAMPLE

**PVL3** - **150** **P** - **1** **8** - **BZ** - **L** = **PVL3-150P-18-BZ-L**

Series Wattage Source Ballast Voltage Finish Options

Catalog Number	Wattage	Source	Voltage	Ballast	Lamp Included	Weight lbs. (kg)
<b>LED</b>						
<b>PVL3-30LU-4K-BZ</b>	69	LED	120-277V	N/A	Yes	10.48 (4.76)
<b>PVL3-30LU-5K-BZ</b>	69	LED	120-277V	N/A	Yes	10.48 (4.76)
<b>Pulse Start Metal Halide</b>						
<b>PVL3-070P-18-BZ-L</b>	70	PS	Quad Tap	HX-HPF	Yes	24 (10.9)
<b>PVL3-100P-18-BZ-L</b>	100	PS	Quad Tap	HX-HPF	Yes	25 (11.3)
<b>PVL3-150P-18-BZ-L</b>	150	PS	Quad Tap	HX-HPF	Yes	25 (11.3)
<b>High Pressure Sodium</b>						
<b>PVL3-070S-18-BZ</b>	70	HPS	Quad Tap	AL-HPF	No	23 (10.4)
<b>PVL3-070S-18-BZ-L</b>	70	HPS	Quad Tap	AL-HPF	Yes	23 (10.4)
<b>PVL3-100S-18-BZ</b>	100	HPS	Quad Tap	AL-HPF	No	24 (10.9)
<b>PVL3-100S-18-BZ-L</b>	100	HPS	Quad Tap	AL-HPF	Yes	24 (10.9)
<b>PVL3-150S-18-BZ</b>	150	HPS	Quad Tap	AL-HPF	No	25 (11.3)
<b>PVL3-150S-18-BZ-L</b>	150	HPS	Quad Tap	AL-HPF	Yes	25 (11.3)
<b>PVL3-150S-51-BZ-L</b>	150	HPS	120NPF	HX-NPF	Yes	12 (5.4)

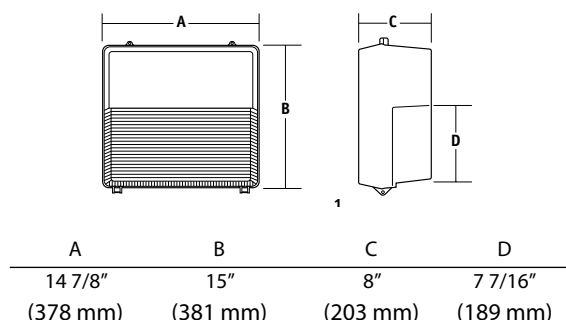
### Options - Add Suffix

<b>-EM</b>	Double contact socket for remote power (less lamp)
<b>-QSS</b>	Quartz restrike system including relay (less lamp) (Double contact bayonet socket)
<b>-RS</b>	Hot restrike system, quickly restores main lamp output after power outage. HPS only.
<b>-L</b>	Lamp included with fixture

### Accessories - Order Separately

<b>PBT-1</b>	Photo control, button type, 120V
<b>PBT-234</b>	Photo control, button type, 208, 240, 277V
<b>PVL3V</b>	Full cut-off visor, formed aluminum, Bronze finish

### Dimensions



### Replacement Parts

<b>200-0180-9904</b>	Polycarbonate front
<b>800-3399-0104</b>	Aluminum/Glass front, Bronze

### Notes

L - Indicates lamp included with the fixture

Above units (-18) are Quad Tap (120,208,240,277V). 480V available on 150w units change 8 to 5

For Tri Tap Canadian ballast (120,277,347V) change 8 to 6

All units are provided in BZ - Dark Bronze finish

50HZ ballastry is available - Consult factory

# Perimaliter® III PGM3

69-250w



- Cast aluminum removable door with borosilicate glass refractor; Twin HubbellGard® screw closure for positive seal
- Cast aluminum back housing provides firm mounting and heat dissipation; Mounts over recessed wiring boxes; Two 1/2" conduit hubs for feed-thru wiring and top hub for field installation of photo control
- Specular aluminum reflector, vertical lamp and refractor prisms combine for excellent perimeter lighting, provides 5-6 times spacing
- Energy-saving 69w LED light engine
- For HID socket is porcelain medium base with spring-loaded center contact for all offerings below 250w, 250w units are mogul base
- Bronze powder standard paint finish, consult factory for other finishes available
- Listed to UL 1598 for use in wet locations



## Ordering Information

### ORDERING EXAMPLE

PGM3 - 150 P - 1 8 - BZ - EM - L = PGM3-150P-18-BZ-EM-L

Series Wattage Source Ballast Voltage Finish Options Lamp

Catalog Number	Wattage	Lamp Type	Voltage	Ballast	Lamp Included	Weight lbs. (kg)
<b>LED</b>						
PGM3-30LU-4K-BZ	69	LED	120-277V	N/A	Yes	15.62 (7.1)
PGM3-30LU-5K-BZ	69	LED	120-277V	N/A	Yes	15.62 (7.1)
<b>Pulse Start Metal Halide</b>						
PGM3-070P-18-BZ-L	70	PS	Quad Tap	HX-HPF	Yes	24 (10.9)
PGM3-100P-18-BZ-L	100	PS	Quad Tap	HX-HPF	Yes	25 (11.3)
PGM3-150P-18-BZ-L	150	PS	Quad Tap	CWA-HPF	Yes	25 (11.3)
PGM3-250P-18-BZ-L	250	PS	Quad Tap	CWA-HPF	Yes	27 (12.2)
<b>High Pressure Sodium</b>						
PGM3-070S-18-BZ	70	HPS	Quad Tap	HX-HPF	No	23 (10.4)
PGM3-100S-18-BZ	100	HPS	Quad Tap	HX-HPF	No	24 (10.9)
PGM3-150S-18-BZ	150	HPS	Quad Tap	HX-HPF	No	25 (11.3)
PGM3-150S-18-BZ-L	150	HPS	Quad Tap	HX-HPF	Yes	25 (11.3)
PGM3-250S-18-BZ	250	HPS	Quad Tap	CWA-HPF	No	30 (13.6)
PGM3-250S-18-BZ-L	250	HPS	Quad Tap	CWA-HPF	Yes	33 (14.9)
<b>Less Ballast</b>						
PGM3-LB†	250Max	None	None		No	15 (6.8)

### Options - Add Suffix

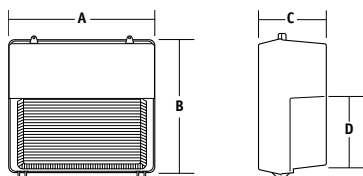
-EM	Double contact socket for remote power (less lamp)
-QSS	Quartz restrike system including relay (less lamp) (Double contact bayonet socket)
-RS	Hot restrike system, quickly restores main lamp output after power outage; HPS only; 150w maximum
-L	Lamp included with fixture

### Accessories - Order Separately

PBT-1	Photo control, button type, 120V
PBT-234	Photo control, button type, 208, 240, 277V
PG-PS¹	Polycarbonate shield for refractor
PG-WG¹	Wire guard for refractor
PVL3V	Full cut off visor, formed aluminum, Bronze finish

1 - Guard and shield can be used on the same fixture

### Dimensions



A	B	C	D
14 7/8"	15"	8"	6 13/16"
(378 mm)	(381 mm)	(203 mm)	(173 mm)

### Replacement Parts

800-3399-0104 Lens door assembly, Bronze

### Notes

L - Indicates lamp included with the fixture

Above units (-18) are Quad Tap (120,208,240,277V); 480V available on 150/250w units, change 8 to 5

For TriTap Canadian ballast (120,277,347V), change 8 to 6

BZ - Dark Bronze finish is standard; For alternate finish - consult factory for price adder and availability

**Finishes available with adder:** BL- Black, GR- Gray, WH- White, PS - Platinum

50HZ ballastry is available - Consult factory

†Socket is mogul base/finish is Bronze on less ballast unit



250-400w

Perimaliter® II PGL

- Cast aluminum removable door with borosilicate glass refractor; Twin HubbellGard® screw closure for positive seal
- Cast aluminum back housing provides firm mounting and heat dissipation; Mounts over recessed wiring boxes; Two 1/2" conduit hubs for feed-thru wiring and side hub for field installation of photo control
- Specular aluminum reflector, vertical lamp position and refractor prisms combine for excellent perimeter lighting; Provides 5-6 times spacing
- PGL is mogul base 250-400w max
- Bronze powder standard paint finish, consult factory for other finishes available
- Listed to UL 1598 for use in wet locations



## Ordering Information

### ORDERING EXAMPLE

**PGL** - **350** **P** - **1** **2** **8** - **1** - **EM** = **PGL-350P-128-1-EM**

Series Wattage Source Ballast Version Voltage Finish Options

Catalog Number	Wattage	Lamp Type	Voltage	Ballast	Lamp Included	Weight lbs. (kg)
<b>Pulse Start Metal Halide</b>						
<b>PGL-250P-128-1-LP</b>	250	PS	Quad Tap	CWA-HPF	Yes	30 (13.6)
<b>PGL-320P-128-1</b>	320	PS	Quad Tap	CWA-HPF	No	32 (14.5)
<b>PGL-350P-128-1</b>	350	PS	Quad Tap	CWA-HPF	No	33 (14.8)
<b>PGL-350P-128-1-LP</b>	350	PS	Quad Tap	CWA-HPF	Yes	33 (14.8)
<b>High Pressure Sodium</b>						
<b>PGL-250S-128-1</b>	250	HPS	Quad Tap	CWA-HPF	No	32 (14.5)
<b>PGL-400S-128-1</b>	400	HPS	Quad Tap	CWA-HPF	No	36 (16.2)
<b>PGL-400S-128-1-LP</b>	400	HPS	Quad Tap	CWA-HPF	Yes	36 (16.2)

### Options - Add Suffix

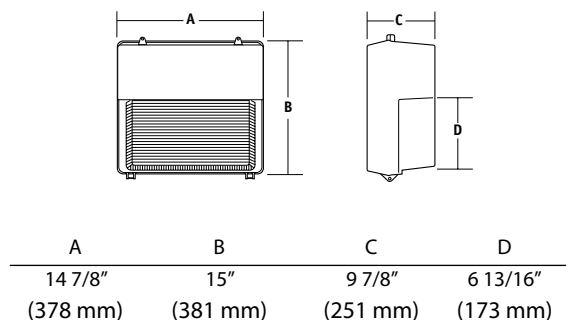
<b>-EM</b>	Double contact socket for remote power (less lamp)
<b>-QSS</b>	Quartz restrike system including relay (less lamp) (Double contact bayonet socket)
<b>-L</b>	Lamp shipped in separate carton

### Accessories - Order Separately

<b>PBT-1</b>	Photo control, button type, 120V
<b>PBT-234</b>	Photo control, button type, 208, 240, 277V
<b>PTA-8</b>	Photo control, external, weather tight, 120, 208, 240, 277V
<b>PG-PS<sup>1</sup></b>	Polycarbonate shield for refractor
<b>PG-WG<sup>1</sup></b>	Wire guard for refractor
<b>PVL3V</b>	Full cut-off visor, formed aluminum, Bronze finish

<sup>1</sup> - Guard and shield can be used on the same fixture

### Dimensions



### Replacement Parts

**800-3399-0104** Lens door assembly, Bronze

### Notes

LP - Indicates lamp included with the fixture

Above units are Quad Tap (120,208,240,277V; For 480V, change 8 to 5

For Tri Tap Canadian ballast (120,277,347V), change 8 to 6

BZ - Dark Bronze finish is standard; For alternate finish - consult factory for price adder and availability

**Finishes available with adder:** 2- Black, 3- Gray, 4- White

50HZ ballastry is available - Consult factory



## Outdoor Lighting

701 Millennium Boulevard  
Greenville, SC 29607

Tel: 864.678.1000

Fax: 864.678.1417

[www.hubbelloutdoor.com](http://www.hubbelloutdoor.com)



### Hubbell Lighting Inc. Distinguished Lighting Brands

Alera Lighting  
Architectural Area Lighting  
Columbia Lighting  
Compass Products  
Devine Lighting  
Dual-Lite  
HomeStyle Lighting  
Hubbell Building Automation  
Hubbell Outdoor Lighting  
Hubbell Industrial Lighting  
Kim Lighting

Kurt Versen  
Paragon Precision Lighting (P2)  
Prescolite  
Progress Lighting  
Security Lighting  
Spaulding Lighting  
Sportsliter Solutions  
Stern Lighting Systems  
Thomasville Lighting  
Whiteway

For more information visit our web site: [www.hubbelloutdoor.com](http://www.hubbelloutdoor.com)