

# Breakaway Streetlight Connector & Splice Insulating Kits

- Safe and easy installation in five minutes or less
- No special equipment necessary – requires only a knife, wire stripper, hex tool and crimp tool
- Fewer parts than competitive brands for better protection
- Built-in break-away design eliminates de-energization of complete circuits
- Safely separates upon impact without breaking wires – eliminates potential danger and electrical shock (breakaway models)
- Spring-loaded contacts compensate for thermal expansion to maintain integrity of connection (breakaway models)



## Application Guide

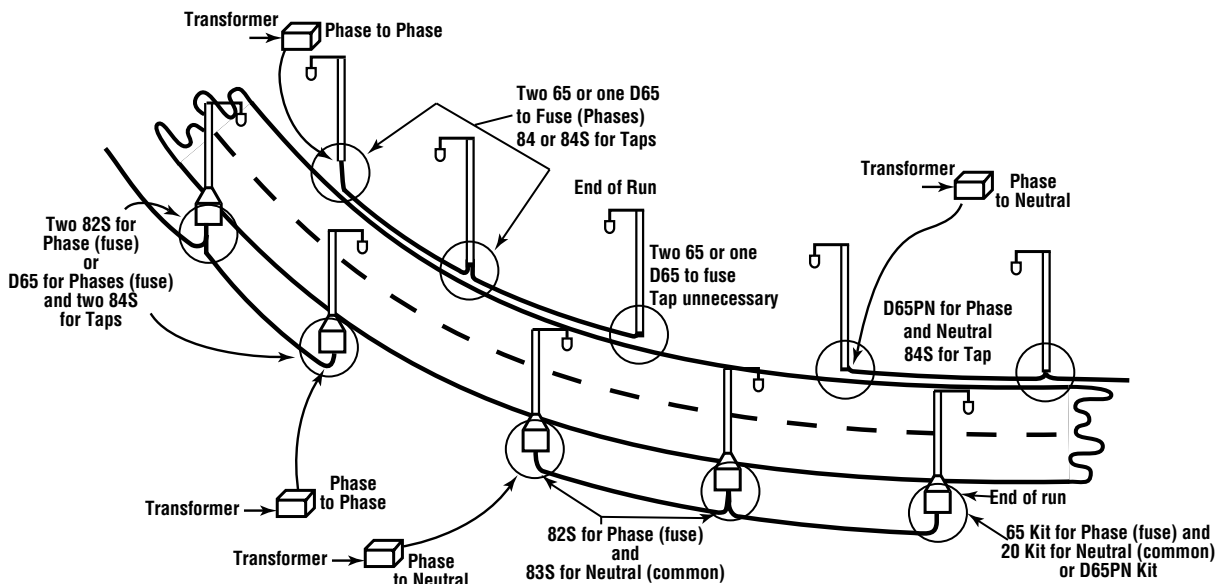
(Examples of Several Configurations)

### For Poles with Transformer Bases, Standard Bases and Junction Boxes

Underground Feed Phase to Phase	
Configurations	Comments
D65 dual-in-line for phases and two 84S kits for taps	Recommended
Two 82S Y-Tap Kits for phases and taps	Cost effective
Underground Feed Phase to Neutral	
DP65PN dual-in-line for phase and neutral and two 84S kits for tap	Recommended configuration
One 82S Y-Tap Kit for phase and tap and one 83S Y-Tap Kit for neutral and tap	Cost effective

### For Lights Mounted to Utility Poles, etc.

Overhead Feed	
Configurations	Comments
Two B-Tap® Insulation Piercing Connectors for phase and/or tap (for insulated conductors only)	Recommended configuration, see B-Tap® Insulation Piercing Connectors in this catalog.





# WIRE TERMINATION

WWW.IDEALIND.COM • 1-800-435-0705 CUSTOMER ASSISTANCE

## Breakaway Streetlight Connector & Splice Insulating Kits

Model			Line Side				Load Side			
Application	Electrical Rating	Ordering Code	Insulation Dia. Range	Stranded* Conductor Size	Type	Ordering Code (choose 1)	Insulation Dia. Range	Stranded* Conductor Size	Type	Ordering Code (choose 1)
<b>Breakaway In-Line Kits</b>										
In-Line Neutral Non-Fused Breakaway	30A, 600V	<b>20 -</b>	.120 - .430"	12 - 6 AWG	Copper Crimp	<b>U -</b>	.120 - .430"	12 - 6 AWG	Copper Crimp	<b>U -</b>
In-Line Phase Fused Breakaway	1/10-30A, 600V	<b>65 -</b>		4 or 2 AWG	Copper Crimp	<b>LC -</b>		4 or 2 AWG	Copper Crimp	<b>LC -</b>
Dual In-Line Phase Fused Breakaway	1/10-30A, 600V	<b>D65 -</b>		4 or 2 AWG	Aluminum Crimp	<b>LA -</b>		4 or 2 AWG	Aluminum Crimp	<b>LA -</b>
Dual In-Line Phase & Neutral Fused Breakaway	1/10-30A Phase, 30A Neutral, 600V	<b>D65PN -</b>								
<b>Breakaway Y-Tap Kits</b>										
Set Screw Phase Fused Tap & Run	1/10-30A, 600V	<b>82S -</b>	.155 - .430"	10 - 2 AWG	Terminal Block with Set Screws Copper or Aluminum Conductors	<b>ADB1 -</b>	.120 - .430"	12 - 6 AWG	Copper Crimp	<b>C</b>
									Copper Crimp	<b>LC</b>
Set Screw Neutral Non-Fused Tap & Run	30 Amp Line 30 Amp Load 600 Volt	<b>83S -</b>	.420 - .785"			<b>EAFB1 -</b>	.120 - .430"	4 or 2 AWG	Aluminum Crimp	<b>LA</b>
<b>Y-Splice Kits</b>										
Set Screw Splice Tap & Run	30A, 600V	<b>84S -</b>	.155 - .430 .420 - .785"	10 - 2 AWG	Terminal Block w/set Screws	<b>ADB1</b>	.120 - .430"	10 - 2 AWG	Terminal Block Copper or Aluminum Conductors	N/A
						<b>EAFB1</b>				

\*For solid wire: 14-4 AWG, use codes U or C, 2 AWG, use codes LC or LA. 75°C/600 Volts Max.



### Example:

A Y-Tap Kit with set screws for a 2 AWG phase line side conductor with a diameter of .472" and a 10 AWG copper load side conductor is ordered as an 82S-EAFB1-C

Note: Fused kits require a 13/32" x 1-1/2" fuse. **DO NOT USE GLASS OR INDICATING TYPES.** Waterproof or direct burial wire is recommended. **THHN is NOT recommended.**

Note: It is not necessary to use the load side ordering code if it is the same as the line side code, i.e., a 65U-U is ordered as a 65U.

STREETLIGHT KITS