

Extraordinary LED Lighting

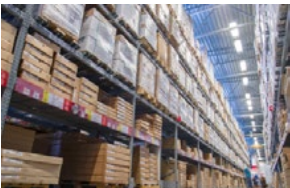
Based in Atlanta, Georgia, Forest Lighting manufactures and markets LED Lighting products including T8 and T5 Linear Lamps, BR Floodlights, Downlights, A19 Lamps and Troffers. Although highly affordable, Forest Lighting products meet rigorous performance standards and certifications, including Energy Star, UL, and DLC for utility rebates.

Forest Lighting LED products are ideal for both retrofit and new construction projects. Our T8, T5, Downlights and Troffers are particularly suitable for offices, classrooms, retail space, industrial operations, warehouses, grocery stores, parking garages, and similar applications. Our T8 LED Linear Lamp is available in both ballast-compatible and non-compatible models. It is also available in an integrated model that connects up to 20 feet.

Forest Lighting offers the right blend of affordability, performance and design to replace fluorescent, halogen and low voltage light sources. LEDs can save 50% of lighting costs, reduce maintenance, and are made with sustainable materials.

With warehouses in Atlanta and Houston, Forest Lighting has immediately available inventory to serve any type of lighting project. Quick-ship orders are on the way within 24 hours.

Backed by the resources of one of the largest LED manufacturers in the world, Forest Lighting offers distributors, contractors, facility managers, designers and other lighting professionals the opportunity to specify and select LEDs that feature both affordability and high performance.



About Our Parent... MLS of China

Founded in 1997, MLS Co., Ltd. of Zhongshan now ranks among the top 10 LED manufacturers in the world. With revenue approaching \$2 billion, MLS LED manufacturing capacity is unmatched, exceeding 16 billion units annually. Its 12,000 employees are dedicated to innovation, quality, and sustainability. MLS LED products serving global markets include a wide variety of lamps and luminaires for indoor and outdoor applications. www.zsmlls.com



Forest Lighting... Ready To Serve You Today

With well-stocked warehouses in Atlanta and Houston, Forest Lighting is a phone call away from overnight shipping to its customers. Our affordable LED lighting products, including T8, T5, BR Floodlights, A19s, Downlights and Troffers, can make the difference in the decision to save energy and move to modern lighting technology.



Corporate Headquarters
2252 Northwest Parkway, Suite D
Marietta, GA
 770-702-7817
Houston Office & Warehouse
Houston, TX
 281-600-8222

Sales Offices
Atlanta, GA
 (Territory: Southeast USA)
 770-355-6591
Cincinnati, OH
 (Territory: Northeast USA, Eastern Canada, Caribbean, Central America)
 513-519-9094

Irvine, CA
 (Territory: Southwest USA, Mexico, S. America)
 714-609-0340
Thousand Oaks, CA
 (Territory: Northwest & Upper Midwest USA, Western Canada)
 805-444-1391
New York
 845-325-7126



Affordable Performance.

Forest Lighting™, based in Atlanta, Georgia, manufactures LED Lamps and Luminaires that offer energy efficiency, excellent color, and superior performance.



Forest Lighting, 2252 Northwest Pkwy, SE Suite D, Marietta, GA 30067 800-994-2143
www.forestlighting.com

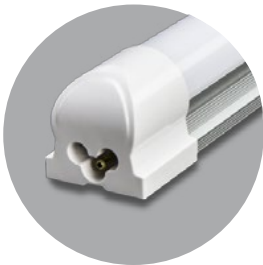
Forest Lighting, 2252 Northwest Pkwy SE, Suite D, Marietta, GA 30067 800-994-2143
www.forestlighting.com

Extraordinary LED Lighting



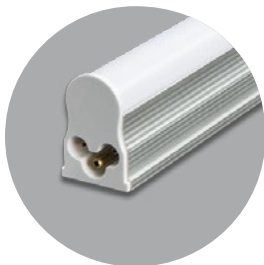
T8 LED Linear Lamps

- Lengths: 2' & 4'
- 12W / 19W
- 1200 / 1900 Lumens
- 3000K / 4100K / 5000K / 6000K
- 50,000 Hours
- 100 – 277 V, Direct AC input



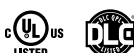
T8 Integrated LED Linear Lamps

- Lengths: 2' & 4'
- 12 W / 19 W
- Connectable up to 20 feet
- 1200 / 1900 Lumens
- 3000K / 4100K / 5000K / 6000K
- 50,000 hours
- 100-277 V, Direct AC Input



T5 Integrated LED Linear Lamps

- Lengths: 1' 2' 3' 4'
- Connectable up to 20 feet
- 5W / 12W / 14W / 19W
- 400 / 900 / 1100 / 1600 Lumens
- 3000K / 4100K / 5000K / 6000K
- 35,000 hours
- 100-277 V, Direct AC input



A19 LED Lamps

- 6W/9W
- 450 / 800 Lumens
- 2700K / 3000K / 4000K / 5000K
- 30,000 Hours
- Dimmable



BR20 / BR30 / BR38 LED Lamps

- 7W / 10W / 14W
- 500 / 650 / 900 Lumens
- 2700K / 3000K / 4000K / 5000K
- 50,000 Hours
- Dimmable



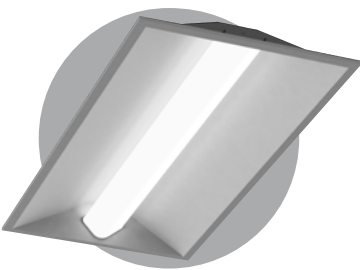
LED Downlight Lamps

- 14 W
- 820 Lumens
- 3000K / 4000K / 5000K
- 25,000 Hours
- Stylish Appearance
- Easy To Install



LED Candelabra Lamps

- 3W / 4.5 W
- 180 / 300 Lumens
- 2700K / 5000K
- 25,000 Hours
- Dimmable
- 2 Lamp Styles



LED Troffer (In Development)

- 2x2' & 2x4' Models
- 24W / 40W
- 2400 / 4000 Lumens
- 3000K / 4100K / 5000K
- 50,000 Hours
- 120/277 V
- Dimmable
- Remote Phosphor Technology
- Architectural Design



FOREST LIGHTING

Sustainable illumination

T8 LED Lamp

The Forest Lighting T8 LED Lamp is designed to perform efficiently in places where old-fashioned fluorescent lamps had been used. Our T8 LED tubes incorporate integral drivers, so out-moded failure-prone fluorescent ballasts are eliminated. Lighting systems are simplified. Forest Lighting T8 LED Lamps connect directly to line voltage for easy installation and are offered in two lengths and four color temperatures.

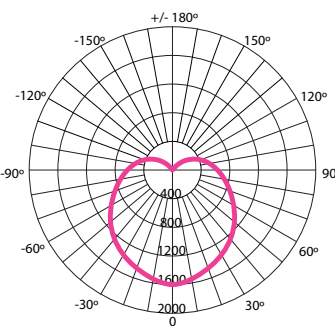
T8 LED LAMP MODELS

CCT	2 FEET	4 FEET
3000K	T8T230 (MT8S04-6)*	T8T430 (MT8S04)*
4100K	T8T241 (MT8N04-6)*	T8T441 (MT8N04)*
5000K	T8T250 (MT8Z04-6)*	T8T450 (MT8Z04)*
6000K	T8T260	T8T460

*Corresponds with DLC model number

PERFORMANCE & PARAMETERS

CCT	3000 / 4100 / 5000 / 6000K
Beam Angle	120°
CRI	> 80 Ra
Efficacy	100 lm/W
Rated Average Life	50,000 Hrs
Input Voltage	100-277 V
Power Frequency	50 / 60 Hz
Power Tolerance	+/- 10%



FEATURES

- Integral Driver
- Direct AC input
- Diffuse lens

BENEFITS

- No Mercury
- Eliminates useless fluorescent ballasts
- Long lifetime
- Low maintenance cost
- High efficiency
- Compatible with voltages 100-277 V
- UL Listed in US and Canada
- DLC listed for utility rebates

WARRANTY

5 Year Warranty

LISTINGS AND CERTIFICATIONS



	2 FEET	4 FEET
Luminous Flux	1200 lm	1900 lm
Input Power	12W	19W
Input Current	.25A	.35A
Fluorescent Equivalent	17W	32W

T8 LED Lamp

PHYSICAL CHARACTERISTICS ENGLISH

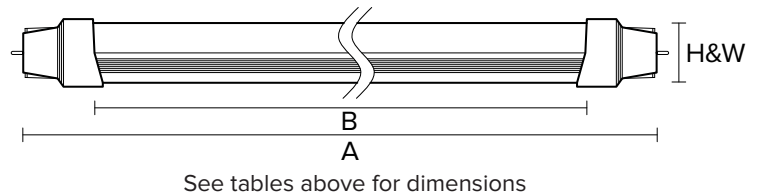
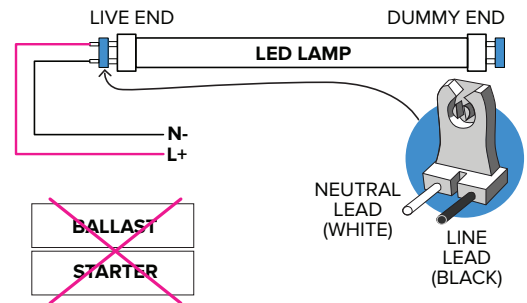
	2 FEET	4 FEET
Body Length (A)	23.62"	47.17"
Lighted Length (B)	22.2"	45.2"
Cross-Section (H x W)	1.18 x 1.02"	1.18 x 1.02"
Net Weight	7.32 oz	12.52 oz

PHYSICAL CHARACTERISTICS METRIC

	2 FEET	4 FEET
Body Length (A)	600mm	1200mm
Lighted Length (B)	539mm	1148mm
Cross-Section (H x W)	30 x 26mm	30 x 26mm
Net Weight	205g	355g

Operating Temperature	-4 to +104 °F, -20 to +40 °C
Operating Humidity	10 to 85% RH
Operating Frequency	> 120 Hz
Base	G13

WIRING DIAGRAM





T8 LED Integrated Lamp

Forest Lighting T8 LED Integrated Lamps perform efficiently in conditions where low voltage, halogen, or fluorescent luminaires have traditionally been used. Our LED tubes incorporate integral drivers, are self-supporting, and can be surface mounted. Individual units can be plugged together for continuous lengths. Forest T8 LED Integrated Lamps connect directly to line voltage and can be used in any interior space.

T8 LED INTEGRATED LAMP MODELS

CCT	2 FEET	4 FEET
3000K	T8N230 (MT8S20-6A)*	T8N430 (MT8S20-A)*
4100K	T8N241 (MT8N20-6A)*	T8N441 (MT8N20-A)*
5000K	T8N250 (MT8Z20-6A)*	T8N450 (MT8Z20-A)*
6000K	T8N260	T8N460

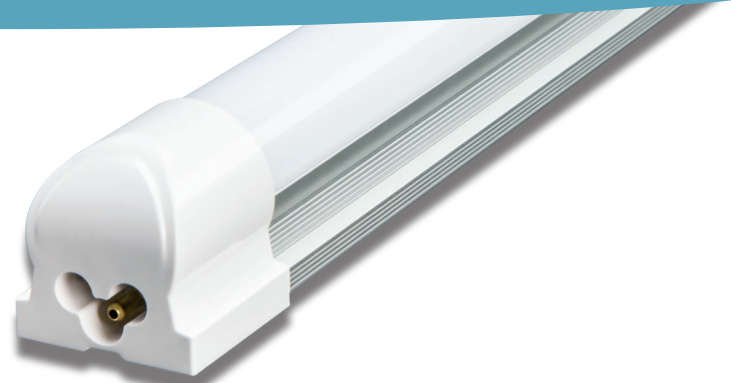
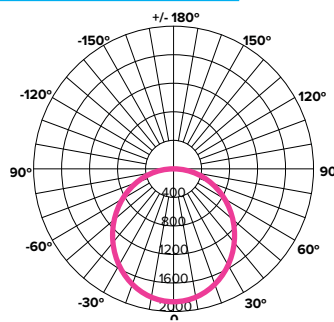
*Corresponds with DLC model number

PERFORMANCE & PARAMETERS

CCT	*3000K / 4100K / 5000K / *6000K	
Beam Angle	120°	
CRI	> 80 Ra	
Efficacy	100 lm/W	
Rated Average Life	50,000 Hrs	
Input Voltage	100-277 V	
Power Frequency	50 / 60 Hz	
Power Tolerance	+- 10%	

*Product currently not in stock

	2 FEET	4 FEET
Luminous Flux	1200 lm	1900 lm
Input Power	12W	19W
Input Current	.11A	.16A
Fluorescent Equivalent	27W	32W



FEATURES

- Integrated Universal Driver
- Units can be plugged together
- Direct AC input
- Diffuse lens
- For use with G5 Connectors

BENEFITS

- No Mercury
- Eliminates useless fluorescent ballasts
- No fixture needed
- Long lifetime
- Low maintenance cost
- High efficiency
- Damp location rated
- Compatible with voltages 100-277 V
- UL listed in US and Canada
- DLC listed for utility rebates

WARRANTY

5 Year Warranty

LISTINGS AND CERTIFICATIONS



* Custom Order

T8 LED Integrated Lamp

PHYSICAL CHARACTERISTICS ENGLISH

	2 FEET	4 FEET
Body Length (A)	23.62"	47.24"
Lighted Length (B)	21.2"	45.2"
Cross-Section (H x W)	1.3 x 1.3"	1.3 x 1.3"
Net Weight	4.23 oz	7.7 oz

PHYSICAL CHARACTERISTICS METRIC

	2 FEET	4 FEET
Body Length (A)	600mm	1209mm
Lighted Length (B)	539mm	1148mm
Cross-Section (H x W)	33 x 33mm	33 x 33mm
Net Weight	120g	218g

Operating Temperature	-4 to +104F, -20 to +40C
-----------------------	--------------------------

Operating Humidity	10 to 85% RH
--------------------	--------------

Operating Frequency	> 120 Hz
---------------------	----------

Base	G5
------	----

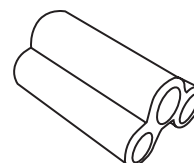
CONTACT US

1.800.994.2143

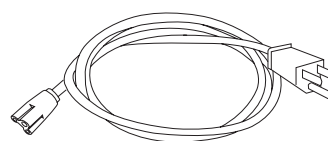
info@forestlighting.com

www.forestlighting.com

PARTS & ACCESSORIES

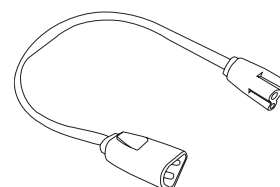


1" T8 Connector, included - T8-DE-CONN

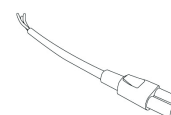


36" T8 Power Cord - INT-36-PC

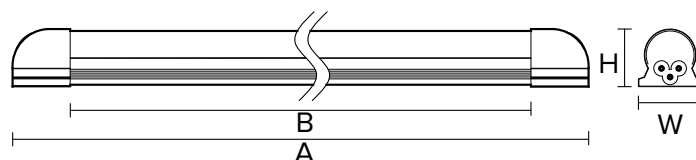
72" T8 Power Cord - INT-72-PC



12" T8 Connector Cable - INT-MSF-J



6" T8 Power Connector, Included - T8 DE-PW-CONN



See tables above for dimensions



T5 LED Integrated Lamp

Forest Lighting T5 LED Integrated Lamps are designed to perform efficiently in conditions where fluorescent, halogen and low voltage luminaires have traditionally been used. Our LED tubes incorporate integral drivers, are self-supporting, and can be surface-mounted. Individual units can be plugged together for continuous lengths. Forest Lighting T5 LED Integrated Lamps connect directly to line voltage and can be used in any interior space.

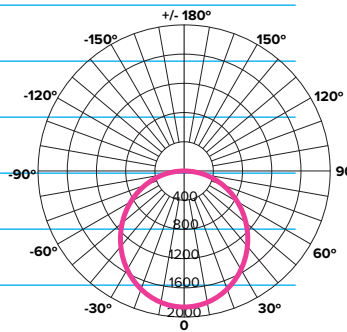
T5 LED INTEGRATED LAMP MODELS

CCT	1 FOOT	2 FEET	3 FEET	4 FEET
3000K	T5N130	T5N230 *(MT5S02-6)	T5N330 *(MT5S02-9)	T5N430 *(MT5S02)
4100K	T5N141	T5N241 *(MT5N02-6)	T5N341 *(MT5N02-9)	T5N441 *(MT5N02)
5000K	T5N150	T5N250 *(MT5Z02-6)	T5N350 *(MT5Z02-9)	T5N450 *(MT5Z02)
6000K	T5N160	T5N260	T5N360	T5N460

*Corresponds with DLC model number

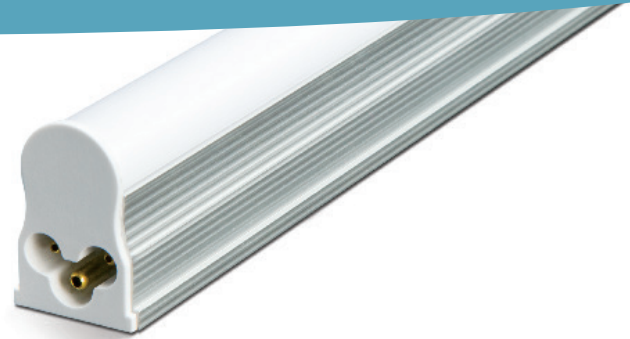
PERFORMANCE & PARAMETERS

CCT	*3000K / 4100K / 5000K / *6000K	
Beam Angle	120°	
CRI	> 80 Ra	
Efficacy	80 lm/W	
Rated Average Life	35,000 Hrs	
Input Voltage	100-277 V	
Power Frequency	50/60 Hz	
Power Tolerance	+/-10%	Beam angle 120°



*Product currently not in stock

	1 FOOT	2 FEET	3 FEET	4 FEET
Luminous Flux	400 lm	900 lm	1100 lm	1600 lm
Input Power	5W	12W	14W	19W
Input Current	.05A	.1A	.11A	.16A
Fluorescent Equivalent	8W	13W	25W	32W



FEATURES

- Integrated Universal Driver
- Units can be plugged together
- Direct AC input
- Diffuse lens
- For use with G5 connectors

BENEFITS

- No Mercury
- Eliminates useless fluorescent ballasts
- No fixture needed
- Long lifetime
- Low maintenance cost
- High efficiency
- Compatible with voltages 100-277 V
- UL Listed in US and Canada

WARRANTY

5 Year Warranty

LISTINGS AND CERTIFICATIONS



T5 LED Integrated Lamp

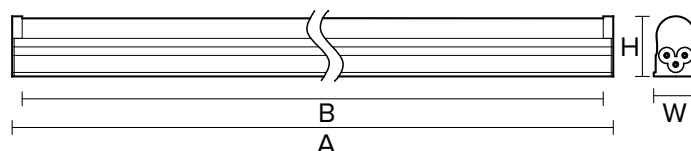
PHYSICAL CHARACTERISTICS ENGLISH

	1 FOOT	2 FEET	3 FEET	4 FEET
Body Length (A)	11.81"	22.40"	34.45"	46.46"
Lighted Length (B)	11.56"	22.15"	34.20"	46.21"
Cross-Section (H x W)	1.18 x .87"	1.18 x .87"	1.18 x .87"	1.18 x .87"
Net Weight	1.69 oz	3.20 oz	4.72 oz	5.33 oz

PHYSICAL CHARACTERISTICS METRIC

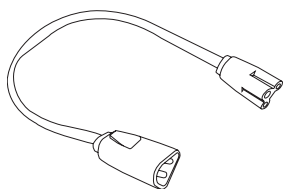
	1 FOOT	2 FEET	3 FEET	4 FEET
Body Length (A)	300mm	570mm	875mm	1180mm
Lighted Length (B)	294mm	564mm	869mm	1174mm
Cross-Section (H x W)	30 x 22mm	30 x 22mm	30 x 22mm	30 x 22mm
Net Weight	48g	91g	134g	151g

Operating Temperature	-4 to +104 °F, -20 to +40 °C
Operating Humidity	10 to 85% RH
Operating Frequency	> 120 Hz
Base	G5

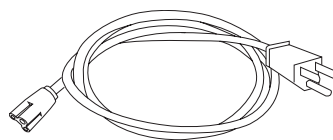


See tables above for dimensions

PARTS & ACCESSORIES

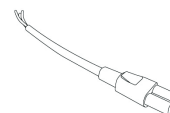


12" T5 Connector Cable - INT-M2F-J



36" T8 Power Cord - INT-36-PC

72" T8 Power Cord - INT-72-PC



6" T5 Power Connector, Included - T5 DE-PW-CONN



FOREST LIGHTING

Sustainable illumination

A19 Dimmable LED Lamps

Forest Lighting A19 LED Lamps are the most affordable, standard LED light bulb on the market today. Forest Lighting A19 lamps offer a variety of colors from warm white to bright white.

PERFORMANCE & PARAMETERS

CCT	3000K / 4000K / 5000K
Beam Angle	290°
CRI	> 80 Ra
Efficacy	≥ 75 lm/W
Rated Average Life	30,000 Hrs
Input Voltage	120V
Power Frequency	60 Hz
Power Tolerance	+/-10%

	6 WATT	9 WATT
Luminous Flux	450 lm	800 lm
Input Current	0.05A	0.073A
Incandescent Equivalent	40W	60W

Operating Temperature	-4 to +104 °F, -20 to +40 °C
Operating Humidity	10 to 85% RH
Operating Frequency	> 120 Hz
Base	E26



FEATURES & BENEFITS

- Lasts 27 years
- Cool to the touch
- High efficiency

WARRANTY

5 Year Warranty

LISTINGS AND CERTIFICATIONS





FOREST LIGHTING

Sustainable illumination

A19 Dimmable LED Lamps

ORDERING INFORMATION

Example: A19-6W30KND-MA4S05-6

Product	Wattage	CCT	Dimmable	Energy Star	Factory Model No.
A19	6W	3000K	D	ES	MA4S05-6
		4000K*			MA2N01-6
		5000K			MA4Z05-6
A19	9W	3000K	D	ES	MA4S06-9
		4000K*			MA2N01-9
		5000K			MA4Z06-9

*Non Stock Item



FOREST LIGHTING

Sustainable illumination

A19 Non-Dimmable LED Lamps

Forest Lighting A19 LED Lamps are the most affordable, standard LED light bulb on the market today. Forest Lighting A19 lamps offer a variety of colors from warm white to bright white.

PERFORMANCE & PARAMETERS

CCT	3000K / 4000K / 5000K
Beam Angle	290°
CRI	> 80 Ra
Efficacy	≥ 75 lm/W
Rated Average Life	30,000 Hrs
Input Voltage	120V
Power Frequency	60 Hz
Power Tolerance	+/-10%

	6 WATT	9 WATT
Luminous Flux	450 lm	800 lm
Input Current	0.05A	0.073A
Incandescent Equivalent	40W	60W

Operating Temperature	-4 to +104 °F, -20 to +40 °C
Operating Humidity	10 to 85% RH
Operating Frequency	> 120 Hz
Base	E26



FEATURES & BENEFITS

- Lasts 27 years
- Cool to the touch
- High efficiency
- Energy Star (pending)

WARRANTY

5 Year Warranty

LISTINGS AND CERTIFICATIONS





FOREST LIGHTING

Sustainable illumination

A19 Non-Dimmable LED Lamps

ORDERING INFORMATION

Example: A19-6W30KND-MA2S05-6

Product	Wattage	CCT	Dimmable	Energy Star	Factory Model No.
A19	6W	3000K	ND	NO	MA2S05-6
		4000K*			MA2N05-6
		5000K			MA2Z05-6
A19	9W	3000K	ND	NO	MA2S05-9
		4000K*			MA2N05-9
		5000K			MA2Z05-9

*Non Stock Item



BR LED Floodlight Series

Forest Lighting LED Floodlights are available in a variety of wattages and color temperatures. The BR type LED Lamps are ideal for residential, commercial, institutional and industrial applications. They are dimmable, and can be used with approved dimmers from all leading lighting control manufacturers.

PERFORMANCE & PARAMETERS

CCT	2700K / 3000K / 4000K / 5000K
Beam Angle	110°
CRI	> 80 Ra
Efficacy	75 - 84 lm/W
Rated Average Life	50,000 Hrs
Input Voltage	120V
Power Frequency	60 Hz
Power Tolerance	+/-10%

	BR20	BR30	BR38
Luminous Flux	500 lm	650 lm	900 lm
Input Power	7W	10W	14W
Input Current	.06A	.08A	.12A
Incandescent Equivalent	50W	65W	75W

Operating Temperature	-4 to +104 °F, -20 to +40 °C
Operating Humidity	10 to 85% RH
Operating Frequency	> 120 Hz
Base	E26



FEATURES & BENEFITS

- BR20 suitable for track lighting (with E26 sockets)
- BR30 and BR38 suitable for downlights
- Lasts up to 46 years
- Dimmable

WARRANTY

5 Year Warranty

LISTINGS AND CERTIFICATIONS





FOREST LIGHTING

Sustainable illumination

BR LED Floodlight Series

ORDERING INFORMATION

Example: BR20-7W30KD-ES-BR20S-7W

Product	Wattage	CCT	Dimmable	Energy Star	Factory Model No.
BR20	7W	2700K	D	ES	BR20S-7W
		3000K			BR20S-7W
		4000K			BR20N-7W
		5000K			BR20Z-7W
BR30	10W	2700K	D	ES	BR30S-10W
		3000K			BR30S-10W
		4000K			BR30N-10W
		5000K			BR30Z-10W
BR38	14W	2700K	D	ES	BR38S-14W
		3000K			BR38S-14W
		4000K			BR38N-14W
		5000K			BR38Z-14W



LED Downlights

Forest Lighting LED Downlights are easy to install for both the professional contractor and the DIYer. Stylishly designed, they deliver soft, even lighting throughout the space. Ideal for both retrofit and new construction applications, Forest Lighting LED Downlights offer a variety of colors from warm white to bright white.

PERFORMANCE & PARAMETERS

CCT	3000K / 4000K / 5000K
Beam Angle	110°
CRI	> 80 Ra
Efficacy	60 lm/W
Rated Average Life	25,000 Hrs
Input Voltage	120V
Power Frequency	60 Hz
Power Tolerance	+/-10%

14 WATT

Luminous Flux	820 lm
Input Current	.12A
Incandescent Equivalent	75W

Operating Temperature	-4 to +104 °F, -20 to +40 °C
Operating Humidity	10 to 85% RH
Operating Frequency	> 120 Hz
Base	E26



FEATURES & BENEFITS

- Ideal for retrofit applications
- Easy to install
- Residential, commercial, and retail applications

WARRANTY

5 Year Warranty

LISTINGS AND CERTIFICATIONS





FOREST LIGHTING

Sustainable illumination

LED Downlights

ORDERING INFORMATION

Example: DL-14W30KND-ES-MD6Z01-14

Product	Wattage	CCT	Dimmable	Energy Star	Factory Model No.
DL	14W	3000K	ND	ES	MD6S01-14
		4000K			MD6N01-14
		5000K			MD6Z01-14



FOREST LIGHTING

Sustainable illumination

LED Candelabra Lamps

Forest Lighting LED Candelabra lamps are ideal for residential and retail applications. Available in two wattages, they offer warm white and a bright white color temperatures. Forest Lighting LED Candelabra Lamps are dimmable, and come in blunt-tip and flame-tip models.

PERFORMANCE & PARAMETERS

CCT	2700K / 5000K
Beam Angle	270°
CRI	> 80 Ra
Efficacy	60 lm/W
Rated Average Life	25,000 Hrs
Input Voltage	120
Power Frequency	60 Hz
Power Tolerance	+/-10%

	3W	4.5W
Luminous Flux	180 lm	300 lm
Input Power	3W	4.5W
Incandescent Equivalent	25W	40W

Operating Temperature	-4 to +104 °F, -20 to +40 °C
Operating Humidity	10 to 85% RH
Operating Frequency	> 120 Hz
Base	E12



FEATURES & BENEFITS

- Ideal for all types of chandeliers (with E12 base)
- Blunt tip or flame tip
- Two wattages available
- Dimmable
- Energy Star

WARRANTY

3 Year Warranty

LISTINGS AND CERTIFICATIONS





FOREST LIGHTING

Sustainable illumination

LED Candelabra Lamps

ORDERING INFORMATION

Example: CLFT-3W27KD-ES-MC2S02-3

Product	Wattage	CCT	Dimmable	Energy Star	Factory Model No.
CLFT	3W	2700K	D	ES	MC2S02-3
	3W	5000K			MC2Z02-3
	4.5W	2700K			MC2S02-4.5
	4.5W	5000K			MC2Z02-4.5
CLBT	3W	2700K			MC1S02-3
	3W	5000K			MC1Z02-3
	4.5W	2700K			MC1S02-4.5
	4.5W	5000K			MC1Z02-4.5

FT - Flame Tip BT - Blunt Tip



LED Troffers

Forest Lighting LED troffers are available in two common, standard sizes: 2'x4' and 2'x2'. The architectural lines complement the latest interior design concepts for office, school, and retail settings. They deliver even lighting throughout the space thanks to remote phosphor technology. Forest Lighting LED Troffers are easy to install, with no sharp edges.

PERFORMANCE & PARAMETERS

CCT	3000K / 4100K / 5000K
CRI	> 80 Ra
Efficacy	100 lm/W
Rated Average Life	50,000 Hrs
Input Voltage	120V-277V
Power Frequency	50/60 Hz
Power Tolerance	+/-10%

	2' X 2'	2' X 4'
Luminous Flux	2400 lm	4000 lm
Wattage	24	40
Fluorescent Equivalent	51	128

Operating Temperature	-4 to +104 °F, -20 to +40 °C
Operating Humidity	10 to 85% RH
Operating Frequency	> 120 Hz



FEATURES & BENEFITS

- Direct/Indirect for soft lighting appearance
- Stylish Design
- Long lifetime
- Dimmable
- UL/DLC (pending)

WARRANTY

5 Year Warranty



High Bay LED Fixtures

Forest Lighting LED High Bay LED Fixtures are affordable replacements for HID systems for customers seeking to save on maintenance and lower electric bills. They deliver ideal light and coverage for manufacturing, warehouse, storage, retail, grocery, gyms, atriums, and other high ceiling applications. Forest Lighting LED High Bays are dimmable, and easy to install.

HIGH BAY FIXTURE MODELS

MODEL NO.	WATTS	BEAM ANGLE	INPUT POWER	LUMEN OUTPUT	EFFICACY
FL-HB150W-60-50K-3DR-DIMM	150	60	164W	16,800 Lm	103 Lm/W
FL-HB150W-90-50K-3DR-DIMM	150	90	164W	16,800 Lm	103 Lm/W
FL-HB150W-120-50K-3DR-DIMM	150	120	164W	16,800 Lm	103 Lm/W
FL-HB200W-60-50K-4DR-DIMM	200	60	217W	21,300 Lm	98 Lm/W
FL-HB200W-90-50K-4DR-DIMM	200	90	217W	21,300 Lm	98 Lm/W
FL-HB200W-120-50K-4DR-DIMM	200	120	217W	21,300 Lm	98 Lm/W



SPECIFICATION INFORMATION

CCT	5000k
CRI	75
Rated Average Life	70,000 Hrs
Power Factor	>0.99
Housing	Aluminum
Dimensions	19" d x 20" h
Operating Temperature	25° F to 219° F
Weight	17 lbs. / 20 lbs.

FEATURES & BENEFITS

- Dimmable
- Uses 50% less energy than metal halide systems
- Instant on. No need for restrike systems or lamp warm up
- Four/Three independent modules ensure continued illumination and optimal control flexibility
- Reduced maintenance cost
- DLC listed for utility rebates

WARRANTY

5 Year Warranty

LISTINGS AND CERTIFICATIONS



- Photometrics are available at www.forestlighting.com



FOREST LIGHTING LIMITED EXPRESS WRITTEN WARRANTY

FOREST LIGHTING CORPORATION (“FOREST LIGHTING” or the “Company”) is pleased to extend this Limited Express Written Warranty (“Warranty”). This Warranty is applicable only to *FOREST LIGHTING and MLS*, the parent company of FOREST LIGHTING, branded lighting products purchased from the Company or an authorized distributor of the Company (“Products”). FOREST LIGHTING warrants each Product to be free from defects in workmanship and materials and to operate from the date of invoice for the time periods and subject to the Terms and Conditions specified below. If a Product fails because of a defect due to workmanship and/or material during the specified warranty period, FOREST LIGHTING will repair or replace the Product or defective part in accordance with the Terms and Conditions set forth below (labor is not included).

TERMS AND CONDITIONS

This Warranty applies only to Products manufactured by FOREST LIGHTING that have been properly wired and installed; that have been operated within electric values contained within the FOREST LIGHTING product specifications; and in environmental conditions (temperature, humidity, air movement) within the normal specified operating range as noted in the specifications. In case of LED Retrofits Products, they must be used in lighting equipment designed and approved for the application.

This Warranty only applies when Products operate in the following recommended conditions:

- Warranty period covers FIVE (5) years from the date of purchase
- Do not exceed the Tc point or case temperature specified in the product specifications
- Operate at rated Voltage or Current specified
- Do not exceed the published ambient operating temperature for the Product
- LED Retrofits Products are operated in an open luminaire (and closed luminaire for LED tubes), with minimum 10mm air around the body of the LED Retrofits Products
- Relative humidity in the installation never exceeds 80% RH, and never exceeds the IP rating of the Product, if any, is provided
- Products are not subject to more than a total of 50,000 switching cycles (with a switching cycle defined as ≤ 30 seconds ‘on’ and ≤ 30 seconds ‘off’)
- The electrical installation in which the Product operates is not subject to voltage fluctuations in a range exceeding $\pm 10\%$ of the specified voltage of the product
- Dimming applicable to instructions on packaging or lamp markings
- Measures must be in place to prevent lightning strikes or transients above ANSI C62.42 Category A1 at the input of the power supply

This FOREST LIGHTING Warranty is non-transferrable and applies only to the original customer of the FOREST LIGHTING Product. This Warranty shall be void in the event of any repairs or alternations, not duly authorized by FOREST LIGHTING in writing, are made to the Products by any person.

No agent, distributor or dealer is authorized to change, modify or extend the terms of this Warranty under any circumstances.

EXCLUSIONS

The Limited Express Written Warranty is NOT applicable to Products damaged due to:

- Abnormal use, abuse and accident;
- Disassembly of the Product;
- Alteration of the Product and/or replacement of the components by an entity not duly authorized by FOREST LIGHTING;
- Wiring and usage in violation of any applicable standard or code including those contained within the latest National Electrical Code (NEC); the Standards for Safety of Underwriters Laboratory, Inc. (UL); Standards for American National Standards Institute (ANSI); or in Canada, the Canadian Standards Association (CSA) and any other applicable electrical code;
- Under/over voltage/current situations; power surges or failures; improper power supply; fault or negligence of the user; improper or unauthorized use;
- Abnormal stress including excessive switching cycles;
- Error in installation and/or improper handling or storage;
- Corrosion beyond that stated within the specifications;
- Acts of God; fire; vandalism; civil disturbance.

FOREST LIGHTING reserves the right to examine failed Products to determine the cause of the failure and patterns of usage and reserves the right to be the sole judge as to whether any of these components are defective and covered under this Warranty.

WARRANTY CLAIM PROCESS

In order to receive the benefits of this Warranty, customers must provide the following information within **thirty (30)** days of failure:

- Product ID, proof of purchase and date of purchase;
- Date of failure;
- Detailed explanation of issue; and
- Contact person name, phone number and email address.

The customer may submit a warranty claim one of two ways:

1. By calling FOREST LIGHTING Customer Service at **1.800.994.2143** or
2. By sending an email to the FOREST LIGHTING Customer Service department at customerservice@forestlighting.com.

FOREST LIGHTING will review the claim and if tentative approval is given, a Return Material Authorization (“RMA”) number will be issued. If requested by FOREST LIGHTING, the user shall promptly return the Product at the user’s sole expense after receiving instructions regarding when and where to ship the Product. Products should be shipped freight pre-paid to the address provided with your RMA. The Product must be returned within **fifteen (15) days** of receiving the RMA number. The shipping box must be clearly marked with the RMA number. Failure to follow this procedure will void the Warranty.

If FOREST LIGHTING determines that the cause of the problem was due to a defect in the material and/or workmanship, FOREST LIGHTING, at its discretion, will either repair the damaged Product or replace it at no charge to the customer. If requested by FOREST LIGHTING, the non-conforming or defective Products shall become FOREST LIGHTING’s property as soon as they have been replaced.

Adequate records of operating history shall be available for inspection by FOREST LIGHTING.

LIMITATIONS OF LIABILITY

THE FOREGOING SHALL CONSTITUTE THE EXCLUSIVE REMEDY OF THE CUSTOMER AND THE SOLE LIABILITY OF FOREST LIGHTING. FOREST LIGHTING SPECIFICALLY DISCLAIMS ALL OTHER WARRANTIES, EXPRESS OR IMPLIED. NO WARRANTY OF MERCHANTABILITY, NON-INFRINGEMENT OR FITNESS FOR A PARTICULAR PURPOSE IS MADE OR IS TO BE IMPLIED. THIS WARRANTY IS EXCLUSIVE OF ALL OTHER WRITTEN OR ORAL WARRANTIES AND NO OTHER WARRANTIES OF ANY KIND ARE GIVEN AND ARE EXPRESSLY DISCLAIMED.

UNDER NO CIRCUMSTANCES, WHETHER AS A RESULT OF BREACH OF CONTRACT, BREACH OF WARRANTY, TORT, STRICT LIABILITY OR OTHERWISE, WILL FOREST LIGHTING BE LIABLE FOR CONSEQUENTIAL, INCIDENTAL, SPECIAL OR EXEMPLARY DAMAGES, INCLUDING BUT NOT LIMITED TO LOSS OF PROFITS, LOSS OF USE OR DAMAGE TO PROPERTY, EQUIPMENT OR LOSS OF CAPITAL; COST OF SUBSTITUTE PRODUCT, FACILITIES OR SERVICES; OR DOWN TIME COSTS. TO THE FULLEST EXTENT PERMITTED BY LAW, FOREST LIGHTING'S TOTAL LIABILITY FOR ALL CLAIMS OF ANY KIND OR FOR ANY LOSS OR DAMAGE ARISING OUT OF USE OF AN FOREST LIGHTING PRODUCT, SHALL NOT EXCEED THE PURCHASE PRICE OF THE SPECIFIC PRODUCT WHICH GIVES RIGHT TO THE CLAIM.

Final disposition of any warranty claim will be determined solely by FOREST LIGHTING.