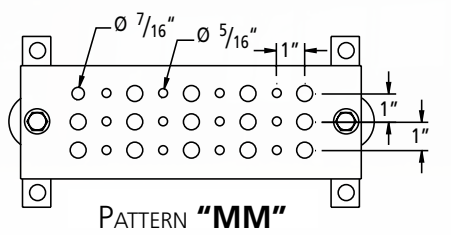
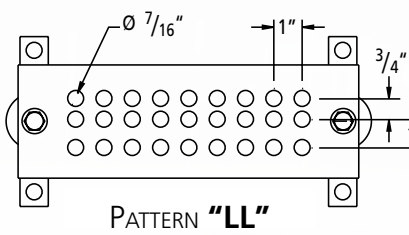
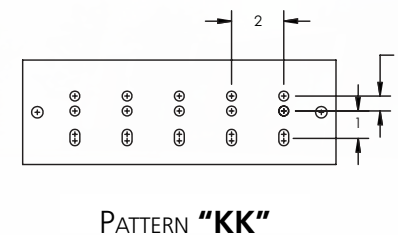
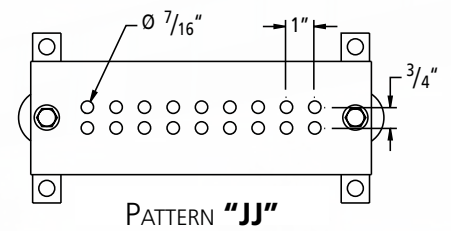
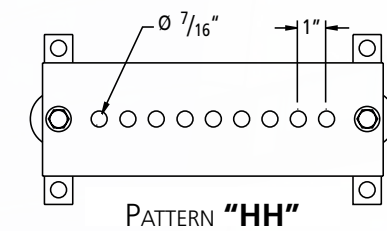
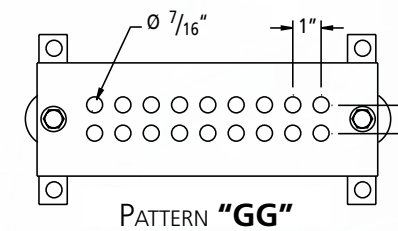
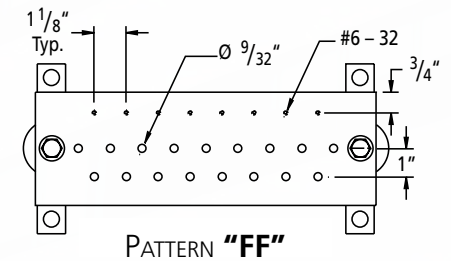
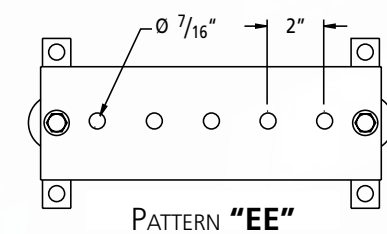
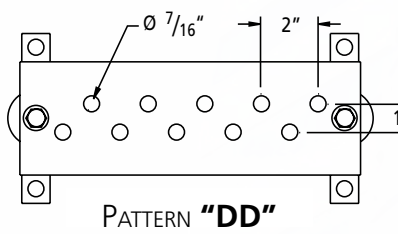
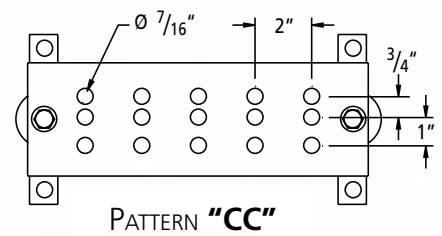
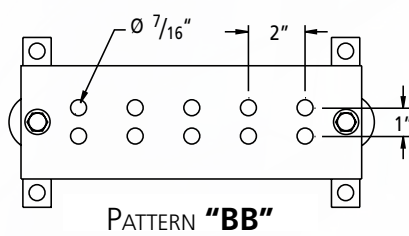
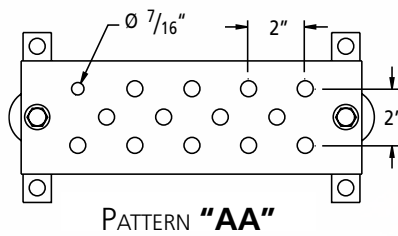


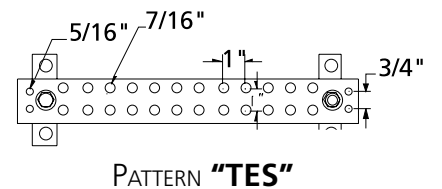
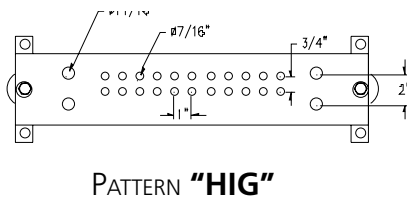
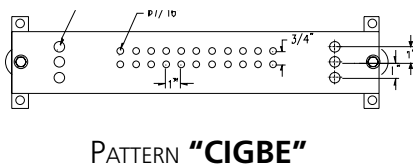
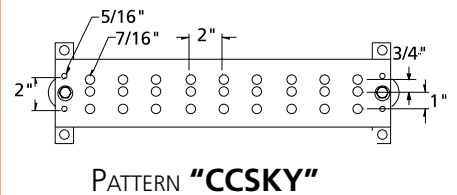
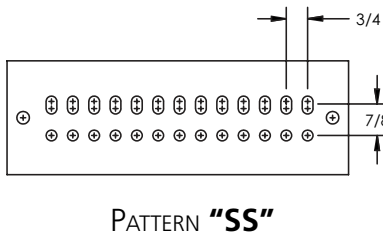
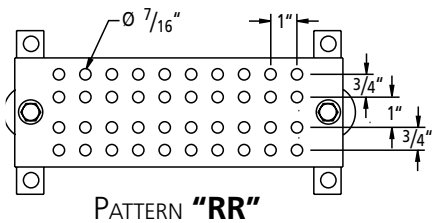
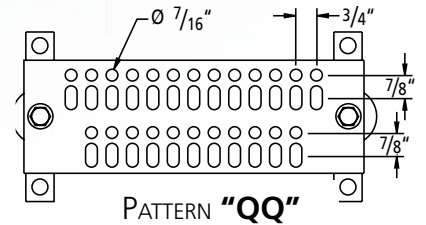
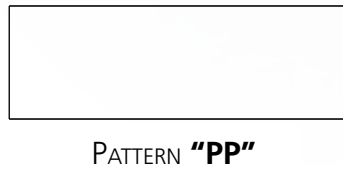
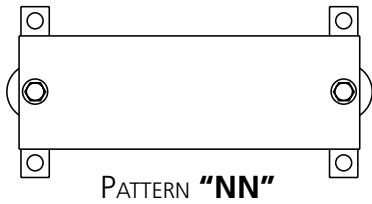
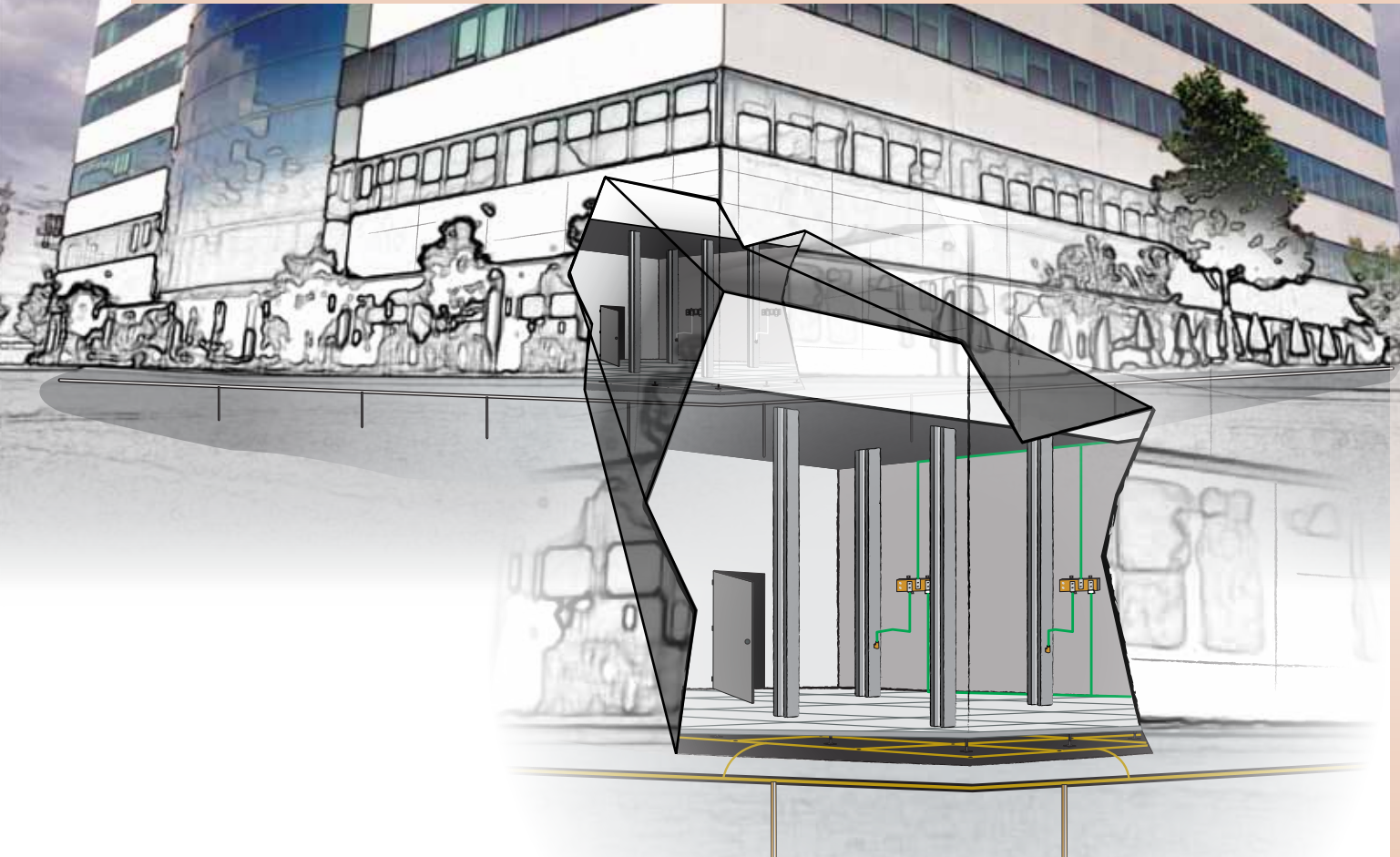
Grounding Bus Bars

Proper bonding is essential to create an equipotential plane between service grounds and equipment during fault and transient conditions. This equipotential plane provides a near zero voltage differential and serves to protect people and equipment during these events. The most popular bonding product in use today is the ground bar or bonding bar. Ground bars provide a convenient, single-point grounding and bonding location. Conductors are welded to the bar

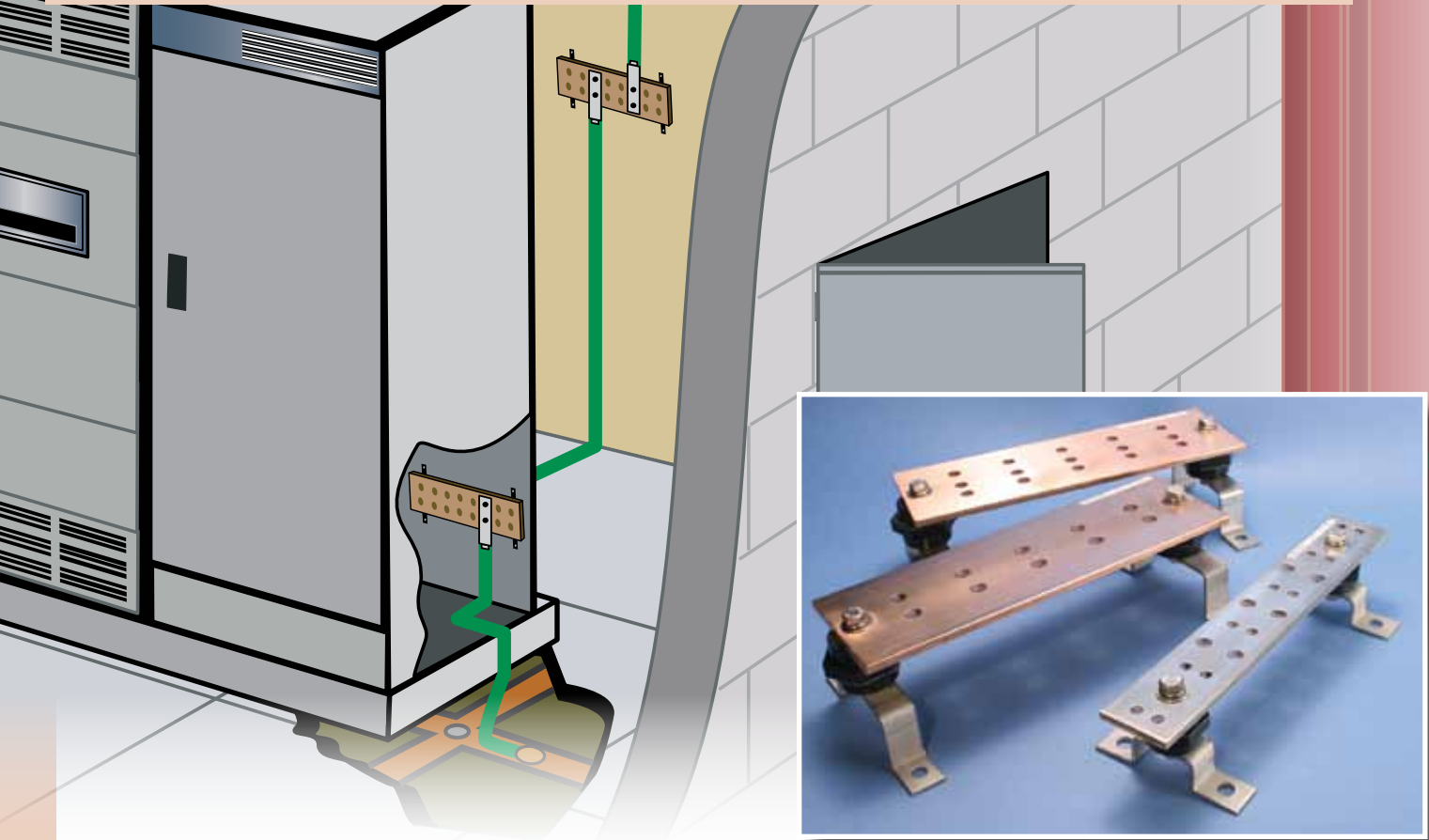
using a CADWELD® exothermic connection or are mechanically fastened by using lugs.

ERICO can design and manufacture custom bars. In addition, the breadth of the product offering includes TMGB bars, which meet the requirements of TIA®/EIA® 607 and conform to BICSI® recommendations. Our perimeter bus system allows for fast and easy field installation of halo and other perimeter grounding schemes.





Grounding Bus Bars



E G B A 1 4 4 1 2 C C

**ERITECH
Ground Bar
Designator**

Configuration

A = Insul & Brkt C = None (Bar only)
B = Brkt only D = Insul only

Thickness

18 = 1/8" 58 = 5/8" 12 = 1/2"
38 = 3/8" 14 = 1/4" 34 = 3/4"

Width

1 = 1" 4 = 4" 7 = 7"
2 = 2" 5 = 5" 8 = 8"
3 = 3" 6 = 6" 9 = 9"

Pig Tail Length Ft. (Empty if none)

A = 1 E = 5 J = 9 N = 16 S = 24 W = 32
B = 2 F = 6 K = 10 O = 17 T = 25 X = 34
C = 3 G = 7 L = 11 P = 18 U = 26 Y = 36
D = 4 H = 8 M = 12 Q = 19 V = 27 Z = 38

ERICO Cable Code (Empty if none)

1K = #4 Sol Tin 2C = 1/0 2V = 250 KCM
1T = #2 Sol Tin SG = 2/0 3D = 350 KCM
2L = 3/0 3Q = 500 KCM
2Q = 4/0 4L = 750 KCM

Tin Plating
(Empty if none)

T = Tinned

Hole Pattern

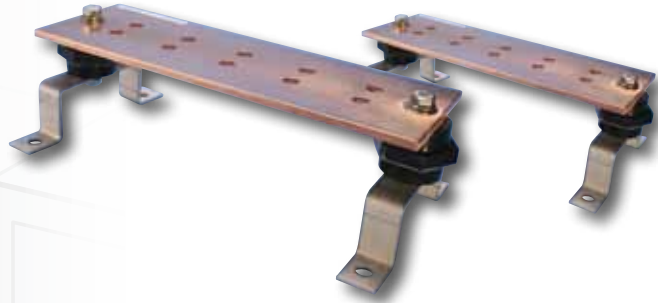
Length (rounded to the nearest inch, up to 96 inch max.)

GROUNDING BUS BARS

EQUIPOTENTIAL BONDING



Commonly Stocked Copper Grounding Bus Bars* with Insulators & Brackets



| Part No. | Thickness (in) | Width (in) | Length (in) | Hole Pattern |
|--------------------|----------------|------------|-------------|--------------|
| 1" wide bar | | | | |
| EGBA14112EE | 1/4 | 2 | 12 | EE |
| 2" wide bar | | | | |
| EGBA14212BB | 1/4 | 2 | 12 | BB |
| EGBA14212EE | 1/4 | 2 | 12 | EE |
| EGBA14212HH | 1/4 | 2 | 12 | HH |
| EGBA14212NN | 1/4 | 2 | 12 | NN |
| EGBA14215JJ | 1/4 | 2 | 15 | JJ |
| EGBA14224GG | 1/4 | 2 | 24 | GG |
| EGBA14224NN | 1/4 | 2 | 24 | NN |
| 4" wide bar | | | | |
| EGBA14410FF | 1/4 | 4 | 10 | FF |
| EGBA14412AA | 1/4 | 4 | 12 | AA |
| EGBA14412BB | 1/4 | 4 | 12 | BB |
| EGBA14412CC | 1/4 | 4 | 12 | CC |
| EGBA14412GG | 1/4 | 4 | 12 | GG |
| EGBA14412LL | 1/4 | 4 | 12 | LL |
| EGBA14412NN | 1/4 | 4 | 12 | NN |
| EGBA14420CC | 1/4 | 4 | 20 | CC |
| EGBA14420NN | 1/4 | 4 | 20 | NN |
| EGBA14424CC | 1/4 | 4 | 24 | CC |
| EGBA14424LL | 1/4 | 4 | 24 | LL |
| EGBA14424MM | 1/4 | 4 | 24 | MM |
| EGBA14424NN | 1/4 | 4 | 24 | NN |

* Also available using pre-tinned copper bar. Add "T" to the part number.

Mounting Kits

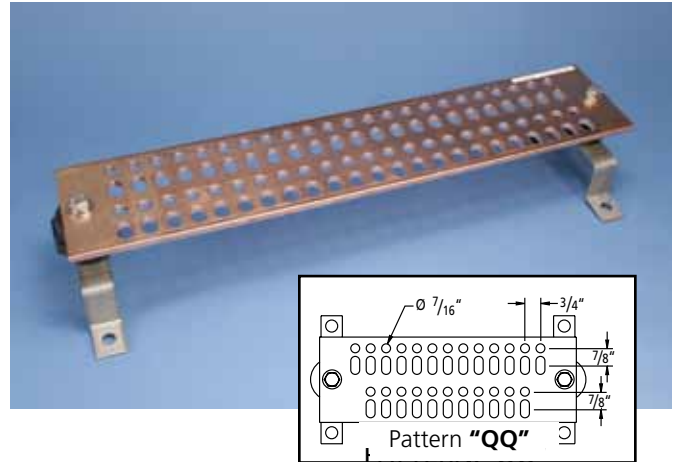


- Include stainless steel hardware, 3/8" fasteners, insulators and brackets
- cULus® listed

| Part No. | Description |
|----------|------------------------------------|
| B548A39* | Mounting kit for steel beam |
| B548A41 | Mounting kit for 1" & 2" wide bars |
| B548A42 | Mounting kit for 3" & 4" wide bars |

* Not UL Listed

QQ Pattern, Copper and Tinned Copper Grounding Bus Bars with Insulators & Brackets*



| Part No. | Thickness (in) | Width (in) | Length (in) | Hole Pattern | Plating |
|--------------|----------------|------------|-------------|--------------|---------|
| EGBA14412QQT | 1/4 | 4 | 12 | QQ | Tinned |
| EGBA14420QQ | 1/4 | 4 | 20 | QQ | Copper |
| EGBA14420QQT | 1/4 | 4 | 20 | QQ | Tinned |
| EGBA14424QQ | 1/4 | 4 | 24 | QQ | Copper |
| EGBA14424QQT | 1/4 | 4 | 24 | QQ | Tinned |

QQ Pattern, Copper & Tinned Copper Grounding Bus Bars (Bar only)*

| Part No. | Configuration | Thickness (in) | Width (in) | Length (in) | Hole Pattern | Plating |
|--------------|---------------|----------------|------------|-------------|--------------|---------|
| EGBC14412QQT | Bar only | 1/4 | 4 | 12 | QQ | Tinned |
| EGBC14424QQT | Bar only | 1/4 | 4 | 24 | QQ | Tinned |
| EGBC14420QQ | Bar only | 1/4 | 4 | 20 | QQ | Copper |
| EGBC14424QQ | Bar only | 1/4 | 4 | 24 | QQ | Copper |
| EGBC14412QQ | Bar only | 1/4 | 4 | 12 | QQ | Copper |

* Tinned bars with QQ hole pattern are electro-tin plated after holes are punched.

Ground Bar Insulators



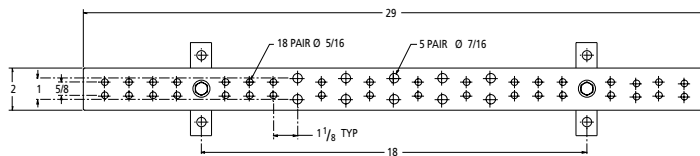
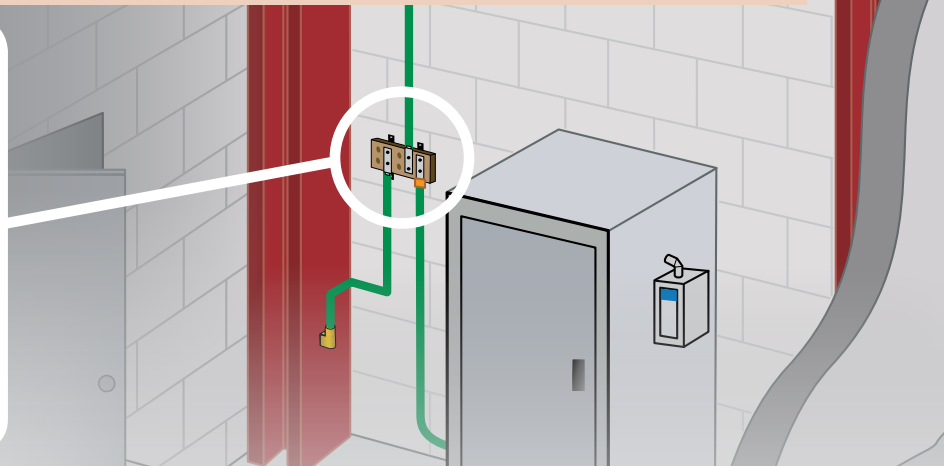
- UL Recognized for Canada and US
- Fiberglass reinforced thermoset polyester

| Part No. | Height (in) | Diameter (in) (A) | Thread Size |
|----------|-------------|-------------------|-----------------|
| 559600 | 1 | 1-1/8 | 1/4 - 20 x 5/16 |
| 559620 | 1-1/4 | 1-5/8 | 1/4 - 20 x 5/16 |
| 559660 | 1-1/2 | 2 | 3/8 - 16 x 3/8 |
| 559685 | 2-1/8 | 2-1/2 | 5/8 - 11 x 5/8 |
| 559686 | 2-1/4 | 2-1/2 | 1/2 - 13 x 5/8 |
| 559687 | 2-1/4 | 2-1/2 | 3/8 - 16 x 5/8 |

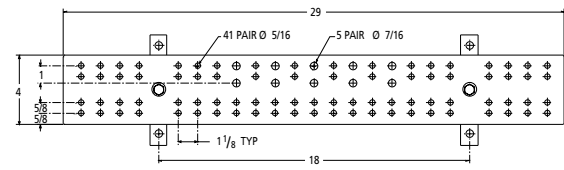
Telecom Ground Bars

TGB & TMGB Telecom Ground Bars

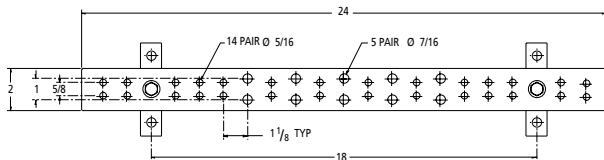
- UL® listed; meet TIA®/EIA® 607 and conform to BICSI® recommendations
- Comply with NEMA® Standards
- 1/4" thick copper bars
- Type 304 stainless steel brackets and insulators included with ground bar kits
- Electro-tin plating available (add "T" to ground bar part number)
- All bars contain 2 mounting holes (7/16")



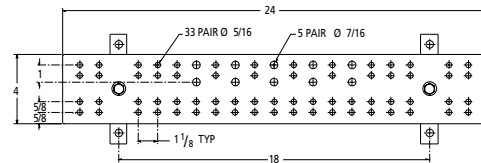
TGBA29L18PT



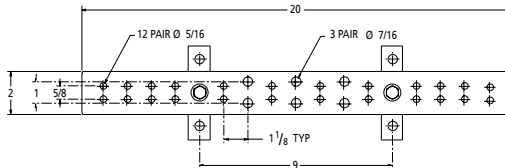
TMGBA29L41PT



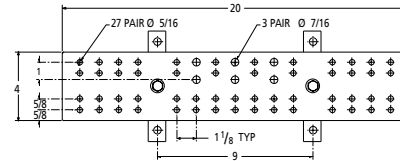
TGBA24L14PT



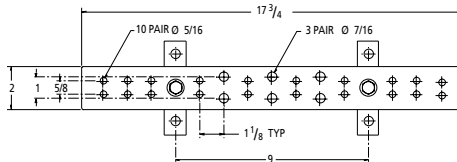
TMGBA24L33PT



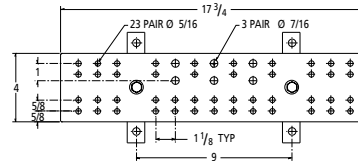
TGBA20L12PT



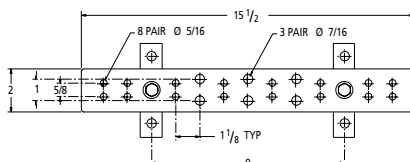
TMGBA20L27PT



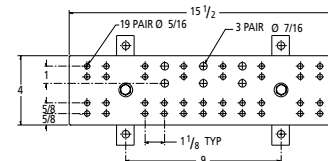
TGBA18L10PT



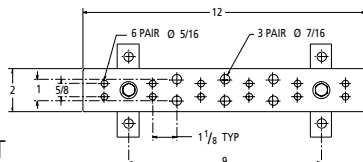
TMGBA18L23PT



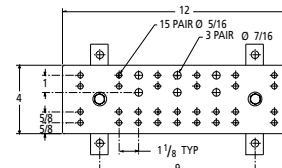
TGBA16L08PT



TMGBA16L19PT



TGBA12L06PT



TMGBA12L15PT



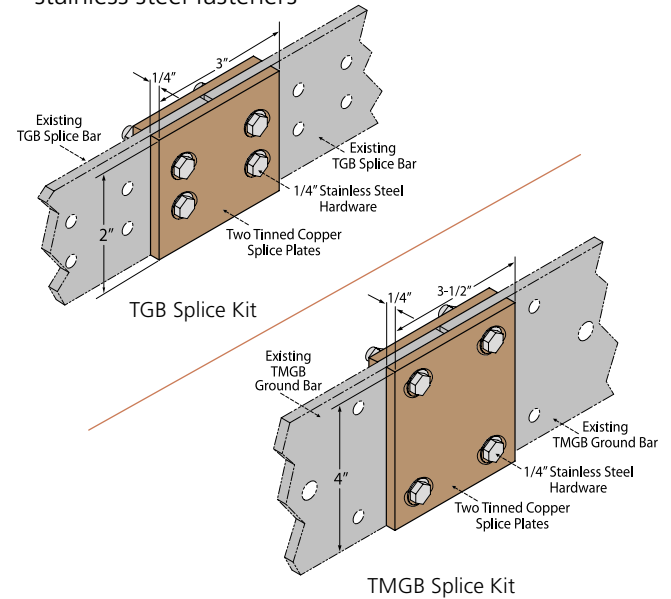
TGB Telecom Ground Bars with Insulators & Brackets



| Part No. | Thickness (in) | Width (in) | Length (in) | Plating |
|-------------|----------------|------------|-------------|---------|
| TGBA12L06P | 1/4 | 2 | 12 | |
| TGBA12L06PT | 1/4 | 2 | 12 | Tin |
| TGBA16L08P | 1/4 | 2 | 15.5 | |
| TGBA16L08PT | 1/4 | 2 | 15.5 | Tin |
| TGBA18L10P | 1/4 | 2 | 17.75 | |
| TGBA18L10PT | 1/4 | 2 | 17.75 | Tin |
| TGBA20L12P | 1/4 | 2 | 20 | |
| TGBA20L12PT | 1/4 | 2 | 20 | Tin |
| TGBA24L14P | 1/4 | 2 | 24 | |
| TGBA24L14PT | 1/4 | 2 | 24 | Tin |
| TGBA29L18P | 1/4 | 2 | 29 | |
| TGBA29L18PT | 1/4 | 2 | 29 | Tin |

TGB & TMGB Telecom Ground Bar Splice Kits

- Includes 2 tinned copper splice plates and stainless steel fasteners



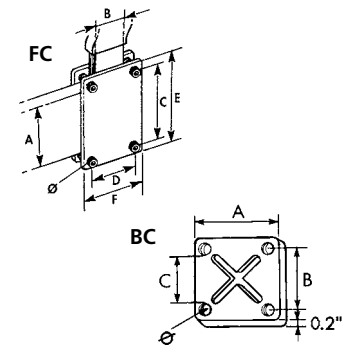
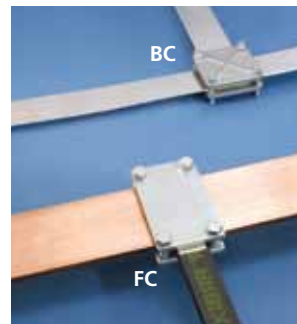
| Part No. | Width (in) | Length (in) | Material |
|--------------|------------|-------------|---------------|
| TGBSPICEKIT | 1/4 | 2 | Tinned Copper |
| TMGBSPICEKIT | 1/4 | 4 | Tinned Copper |

TMGB Telecom Main Ground Bars with Insulators & Brackets



| Part No. | Thickness (in) | Width (in) | Length (in) | Plating |
|--------------|----------------|------------|-------------|---------|
| TMGBA12L15P | 1/4 | 4 | 12 | |
| TMGBA12L15PT | 1/4 | 4 | 12 | Tin |
| TMGBA16L19P | 1/4 | 4 | 15.5 | |
| TMGBA16L19PT | 1/4 | 4 | 15.5 | Tin |
| TMGBA18L23P | 1/4 | 4 | 17.75 | |
| TMGBA18L23PT | 1/4 | 4 | 17.75 | Tin |
| TMGBA20L27P | 1/4 | 4 | 20 | |
| TMGBA20L27PT | 1/4 | 4 | 20 | Tin |
| TMGBA24L33P | 1/4 | 4 | 24 | |
| TMGBA24L33PT | 1/4 | 4 | 24 | Tin |
| TMGBA29L41P | 1/4 | 4 | 29 | |
| TMGBA29L41PT | 1/4 | 4 | 29 | Tin |

Connecting Clamps



ERIFLEX® FLEXIBAR Clamp

| Part No. | Description | A (in) | B (mm) | C (in) | D (in) | E (in) | F (in) | Diam (mm) | Torque (ft/lbs) |
|----------|-------------|--------|--------|--------|--------|--------|--------|-----------|-----------------|
| 553020 | FC 50 x 24 | 2 | 20-24 | 2.32 | 1.42 | 2.95 | 2.05 | M8 | 0.7 |
| 553030 | FC 50 x 32 | 2 | 32 | 2.32 | 1.73 | 2.95 | 2.36 | M8 | 0.8 |
| 553040 | FC 50 x 40 | 2 | 40 | 2.32 | 2.05 | 2.95 | 2.68 | M8 | 0.91 |
| 553050 | FC 80 x 24 | 3.18 | 20-24 | 3.5 | 1.42 | 4.13 | 2.05 | M8 | 0.95 |
| 553060 | FC 80 x 32 | 3.18 | 32 | 3.5 | 1.73 | 4.13 | 2.36 | M8 | 1.08 |
| 553070 | FC 80 x 50 | 3.18 | 50 | 3.5 | 2.44 | 4.13 | 3.07 | M8 | 1.41 |
| 568700 | FC 100 x 32 | 3.97 | 32 | 4.29 | 1.73 | 4.92 | 2.36 | M8 | 1.47 |
| 568730 | FC 120 x 32 | 4.4 | 32 | 5.08 | 1.73 | 4.92 | 2.36 | M8 | 1.67 |

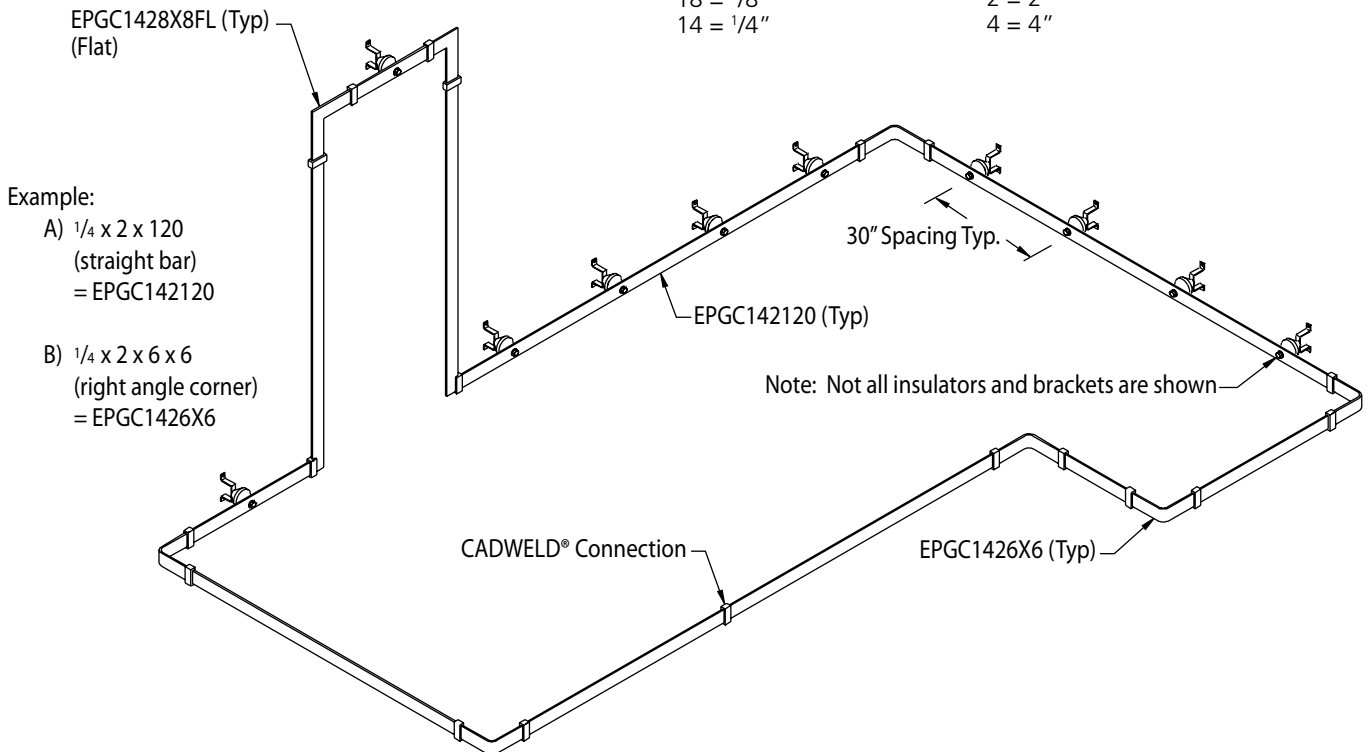
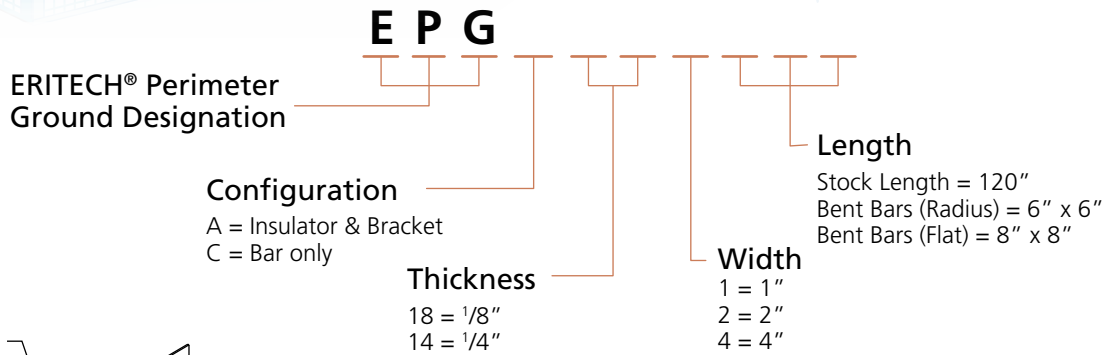
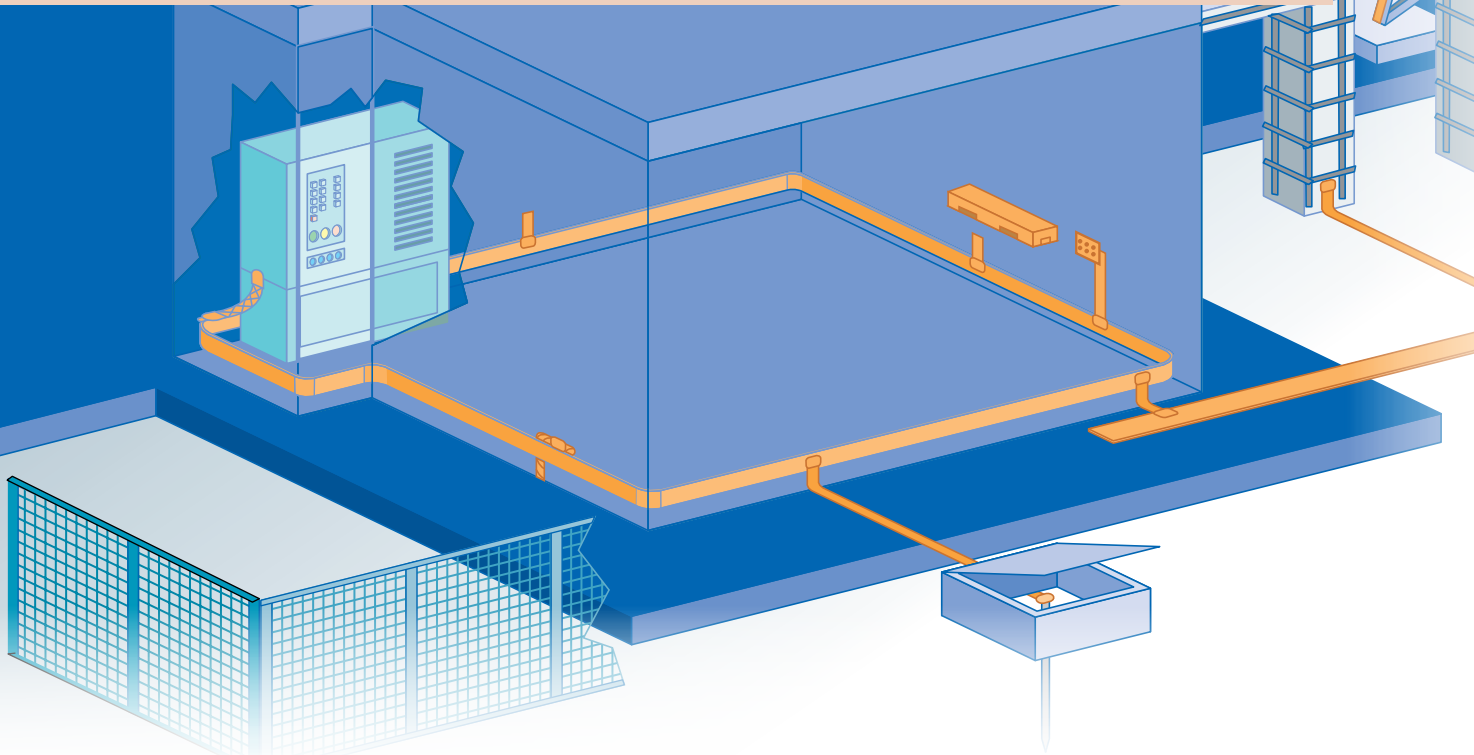
Ribbed-Steel Busbar Clamp

| Part No. | Description | A (in) | B (in) | C (in) | Ø (mm) | Torque (ft/lbs) |
|----------|-------------|--------|--------|--------|--------|-----------------|
| 553200 | BC 30 | 2.2 | 1.65 | 1.37 | M6 | 5.16 |
| 553210 | BC 40 | 2.6 | 2.05 | 1.77 | M6 | 5.16 |
| 553220 | BC 50 | 3.26 | 2.52 | 2.16 | M8 | 14.75 |
| 553230 | BC 63 | 3.66 | 2.91 | 2.55 | M8 | 14.75 |
| 553250 | BC 80 | 4.64 | 3.78 | 3.34 | M10 | 29.5 |
| 553260 | BC 100 | 5.67 | 4.64 | 4.21 | M10 | 29.5 |

Perimeter Grounding Bus Bars

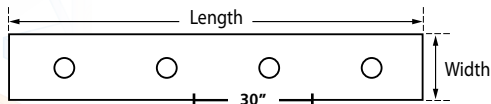
PERIMETER GROUNDING BUS BARS

EQUIPOTENTIAL BONDING



Perimeter Grounding Bus Bars

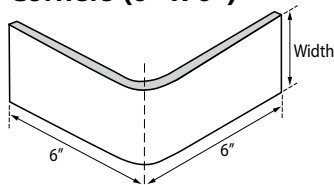
Straight Perimeter Bars with $\frac{7}{16}$ " Holes on 30" Centers



| Part No. | Thickness (in) | Width (in) | Length (in) |
|--------------|----------------|------------|-------------|
| EPGC141120 | 1/4 | 1 | 120 |
| EPGC142120 | 1/4 | 2 | 120 |
| EPGC142120T* | 1/4 | 2 | 120 |
| EPGC142144 | 1/4 | 2 | 144 |
| EPGC143120 | 1/4 | 3 | 120 |
| EPGC144120 | 1/4 | 4 | 120 |
| EPGC181120 | 1/4 | 1 | 120 |
| EPGC182120 | 1/8 | 2 | 120 |
| EPGC183144 | 1/8 | 3 | 144 |
| EPGC184120 | 1/8 | 4 | 120 |

* Tinned copper bar

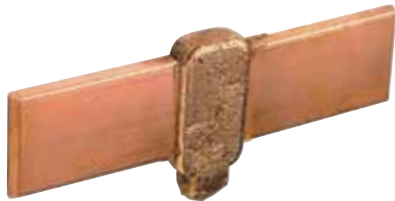
Bent Bus Bars with 90-degree Angle for Corners (6" x 6")



| Part No. | Thickness (in) | Width (in) | Length (in) |
|--------------|----------------|------------|-------------|
| EPGC1236X6 | 1/2 | 3 | 6 |
| EPGC1416X6 | 1/4 | 1 | 6 |
| EPGC1426X6 | 1/4 | 2 | 6 |
| EPGC1426X6T* | 1/4 | 2 | 6 |
| EPGC1428X8 | 1/4 | 2 | 8 |
| EPGC1436X6 | 1/4 | 3 | 6 |
| EPGC1446X6 | 1/4 | 4 | 6 |
| EPGC1446X6T* | 1/4 | 4 | 6 |
| EPGC1816X6 | 1/8 | 1 | 6 |
| EPGC1826X6 | 1/8 | 2 | 6 |
| EPGC1846X6 | 1/8 | 4 | 6 |

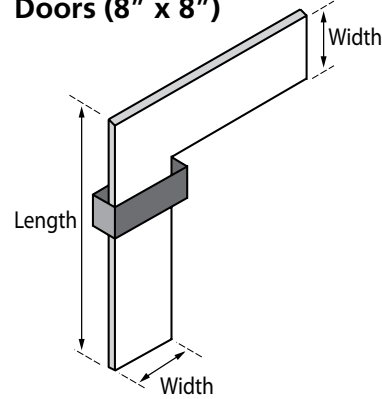
* Tinned copper bar

CADWELD® Type BA Connections



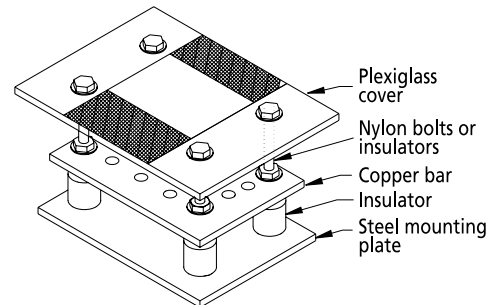
| Mold Part No. | Bar Thickness (in) | Bar Width (in) | Welding Material |
|---------------|--------------------|----------------|------------------|
| BACCE | 1/8 | 1 | 45 |
| BACCH | 1/8 | 2 | 90 |
| BACCK | 1/8 | 3 | 200 |
| BADCM | 1/8 | 4 | 250 |
| BACEE | 1/4 | 1 | 90 |
| BACEH | 1/4 | 2 | 200 |
| BADEK | 1/4 | 3 | 200 (2) |
| BADEM | 1/4 | 4 | 500 |

Bus Bars with Flat 90-degree Angle for Doors (8" x 8")



| Part No. | Thickness (in) | Width (in) | Length (in) |
|--------------|----------------|------------|-------------|
| EPGC1418X8FL | 1/4 | 1 | 8 |
| EPGC1428X8FL | 1/4 | 2 | 8 |
| EPGC1448X8FL | 1/4 | 4 | 8 |
| EPGC1818X8FL | 1/8 | 1 | 8 |
| EPGC1828X8FL | 1/8 | 2 | 8 |
| EPGC1848X8FL | 1/8 | 4 | 8 |

FAA Ground Bars



FAA-Style Ground Bar

- FAA ground bars available in many sizes.
- Customer to provide:
 - Ground bar size
 - Hole pattern
 - Plexiglass size
 - Plexiglass markings

Plexiglass Protective Covers

| Part No. | Thickness (in) | Width (in) | Length (in) |
|-----------|----------------|------------|-------------|
| B540C130C | 1/4 | 6 | 14 |
| B540C131C | 1/4 | 6 | 10 |
| B540C132C | 1/4 | 6 | 10 |

* Specify size. Contact ERICO for quote.

Equipment Ground Plates

Cast Ground Plates

- Convenient ground system connection points in concrete structures
- Used for equipment, machinery and structure grounding
- Made from a copper alloy
- Result in current carrying capacity equal to that of the conductor or stud
- Will not loosen or corrode



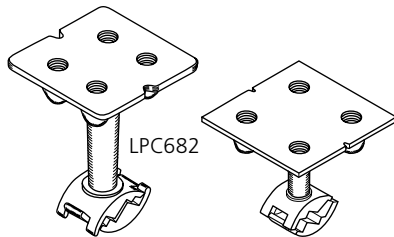
Use a CADWELD® mold (Type TA or Type SS) when connecting the ERITECH® brand of cast ground plate to the ground conductor. The cast ground plate stud size noted above fits the mold opening for a cable of the same size. Reference CADWELD catalog (A1A) for more information.

Examples:

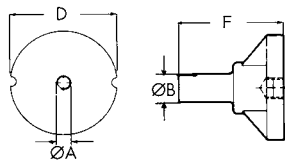
- Tee connection of 250 cable to B1642Q (4/0 stud size), use mold TAC2V2Q.
- Splice connection of 250 cable to B1642Q, use mold SSC2Q2V.

Clamp Style Ground Plate

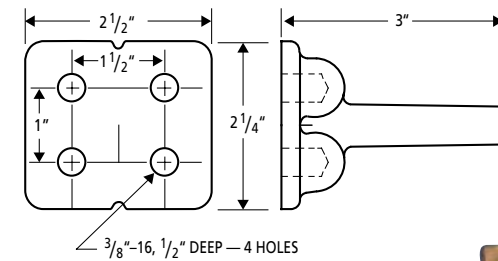
- Cast bronze grounding plate
- Dimensions similar to B164 Series
- Cable connection under bolt tension



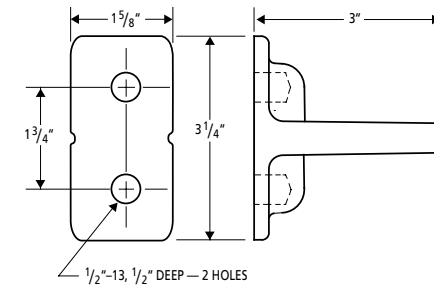
DB Series



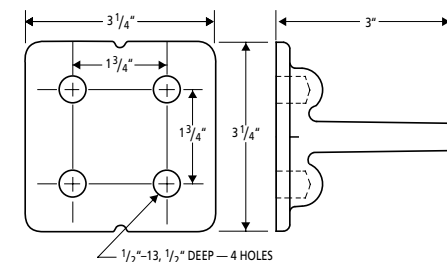
| Reference Code | øA | øB (mm) | øD (mm) | F (mm) |
|----------------|-----|---------|---------|--------|
| DB-10A | M10 | 16 | 50 | 55 |
| DB-12A | M12 | 16 | 50 | 55 |
| DB-16A | M16 | 16 | 50 | 55 |



| Part No. | Description |
|----------|-------------------------------------|
| B1612Q | Cast ground plate with 4/0 stud |
| B1613Q | Cast ground plate with 500 MCM stud |



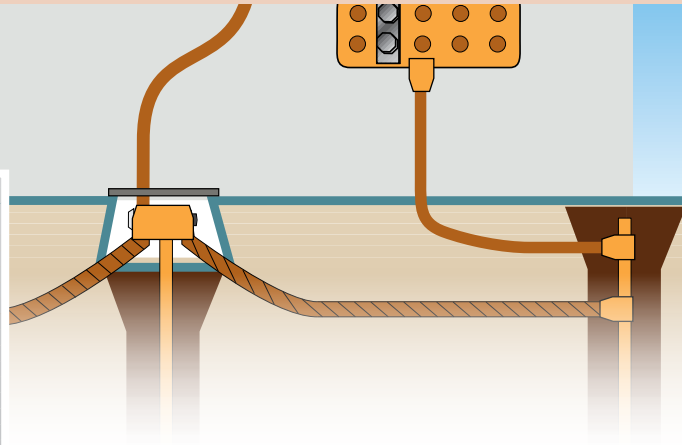
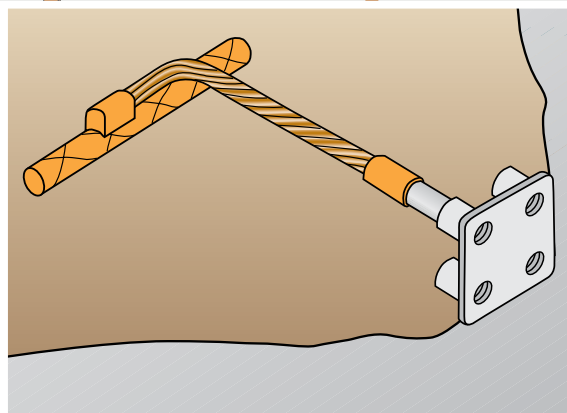
| Part No. | Description |
|----------|---------------------------------|
| B1622Q | Cast ground plate with 4/0 stud |



| Part No. | Description |
|----------|-------------------------------------|
| B1642Q | Cast ground plate with 4/0 stud |
| B1643Q | Cast ground plate with 500 MCM stud |



Equipment Ground Plate Assemblies



- Assemblies use equipment ground plate parts: B1612Q [A], B1613Q [B], B1622Q [C], B1642Q [D], and B1643Q [E]
- Custom lengths available; contact ERICO for details

B530 A 2Q 72

Ground Plate Configuration

RA = "B530"
 RB = "B531"
 SS = "B532"
 TA = "B533"

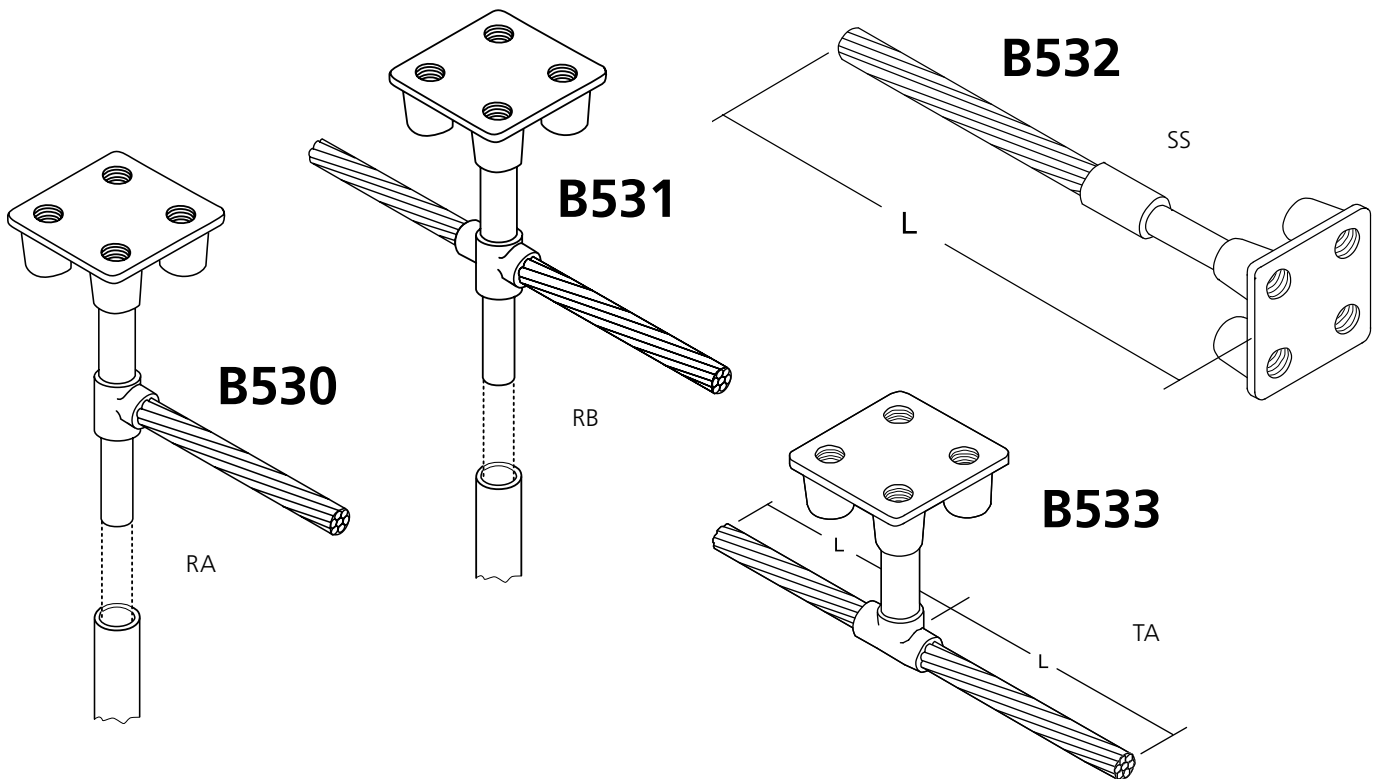
Ground Plate Part Number

B1612Q = "A"
 B1613Q = "B"
 B1622Q = "C"
 B1642Q = "D"
 B1643Q = "E"

Cable Length (inches)

Cable Code

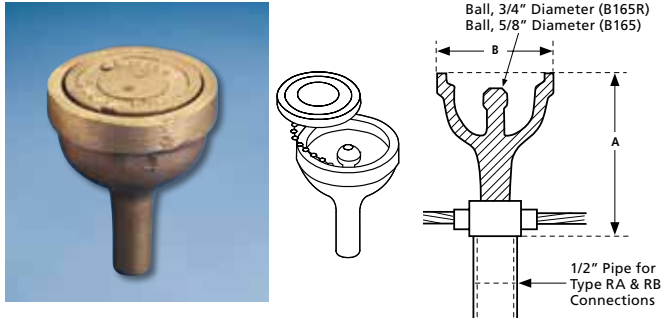
| | | |
|------------------|-------------------|-----------------------|
| #6 Solid = 1G | 1/0 Stranded = 2C | 250 MCM Stranded = 2V |
| #4 Stranded = 1L | 2/0 Stranded = 2G | 350 MCM Stranded = 3D |
| #2 Stranded = 1V | 4/0 Stranded = 2Q | 500 MCM Stranded = 3Q |



Aircraft Grounding Receptacles

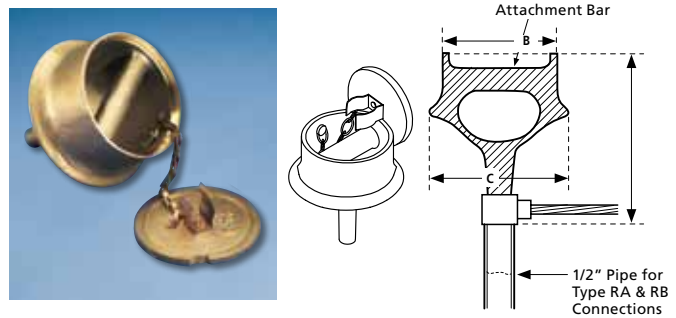
- Copper alloy castings for use in static grounding systems of aircraft refueling areas
- Easily connected to grounding system conductor and/or ground rods
- Designed for simple installation with flush paved surfaces
- Compatible with CADWELD® connections

Grounding Receptacles with Ball Stud



| Part No. | Attachment Point | Depth (in) (A) | Diameter (in) at Grade Level (B) | Standard Packaging Quantity |
|----------|----------------------------|----------------|----------------------------------|-----------------------------|
| B165* | 3/4" Ball Stud | 4-1/2 | 2-3/4 | 1 |
| B165B | (Cover for B165, included) | — | 2-3/4 | 1 |
| B165R* | Removable 3/4" Ball Stud | 4-1/2 | 2-3/4 | 1 |
| B165RS* | Removable 3/4" Ball Stud | 4-1/2 | 2-3/4 | 1 |

Grounding Receptacles with Bar Attachment Point

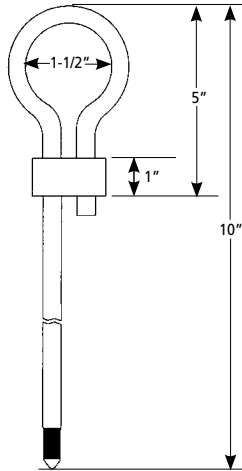


| Part No. | Attachment Point | Depth (in) (A) | Diameter (in) at Grade Level (B) | Maximum Diameter (in) (C) | Standard Packaging Quantity |
|----------|----------------------------|----------------|----------------------------------|---------------------------|-----------------------------|
| B166* | 3/4" Diameter Bar | 6-1/4 | 3-7/8 | 4-3/4 | 1 |
| B166B | (Cover for B166, included) | — | 3-7/8 | — | 1 |
| B167 | 1.5" Diameter Bar | 7-1/4 | 4-3/4 | 6-1/2 | 1 |
| B167B | (Cover for B167, included) | — | 4-3/4 | — | 1 |

* Aircraft static grounding clamp B2617A can be used to connect to the B165, B165R, and B166.

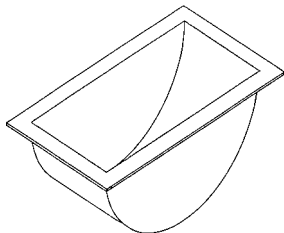
Copper-bonded Aircraft Tie Down Rods

| Specifications | |
|----------------|------------------------------------|
| 663400 | Nominal 3/4" diameter x 10' length |



Depression Mold DM5834

Plastic for making 3" x 6" x 2.5" deep depression in concrete pour around loop in aircraft tie-down.

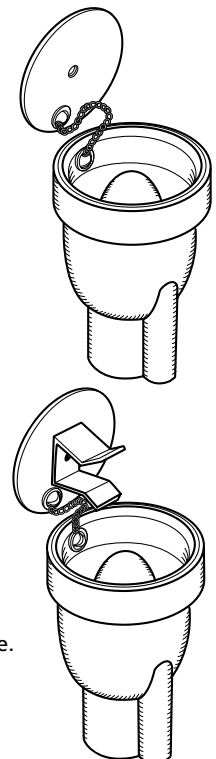


Grounding Receptacles for Sectional Ground Rods

- Copper alloy castings for use in static grounding systems of aircraft refueling areas
- Easily connected to grounding system conductor and/or ground rods
- Designed for simple installation with flush paved surfaces
- Standard pin connection
- Chain-retained cover plate
- Couple directly to 3/4" sectional or extension rod

| Part No. | Standard Packaging Quantity |
|----------|-----------------------------|
| LPC680 | 1 |
| LPC681** | 1 |

** Spring clip included to secure cover plate.





The importance of SRGs for Computer Applications

In order to minimize the effects of noise, many computer manufacturers, users and government agencies have detailed specifications regarding computer grounding. Computer installations are particularly sensitive to:

- Coupling between adjacent power, data circuits and ground, where noise can be introduced into cables — even nearby lightning strikes can be a real threat.
- Noise levels from nearby transmitters may be a serious problem and require shielding.

Components of the SRG

Effective SRG uses:

- A multitude of conductors to create a very low impedance to noise at any frequency
- 2-foot spacing between conductors
- Terminations that provide a constant impedance over the life of the facility
- Multiple paths within the SRG to allow the noise currents to divide at each crossover, which further reduces voltage drop
- A mesh made of flat copper strips to provide the most functional low impedance and cost effective computer grounding system available
- Welded connections to assure a noise-free bond

Welded Connections

Welded connections are often specified because they are the only connections proven to assure a “noise-free” bond. Normal shock and vibration jar mechanical connections, creating electronic noise. This causes relatively high Ldi/dt voltages, due to a sudden change in connection impedance. This sudden change can result in pulses which can be coupled onto the signal circuits. These unwanted signals can create false data or even cause permanent circuit damage. Corrosion, dirt and cleaning fluids cannot interfere with the molecular bond of a welded joint.



Pre-fabricated Signal Reference Grid installed under computer room floor.

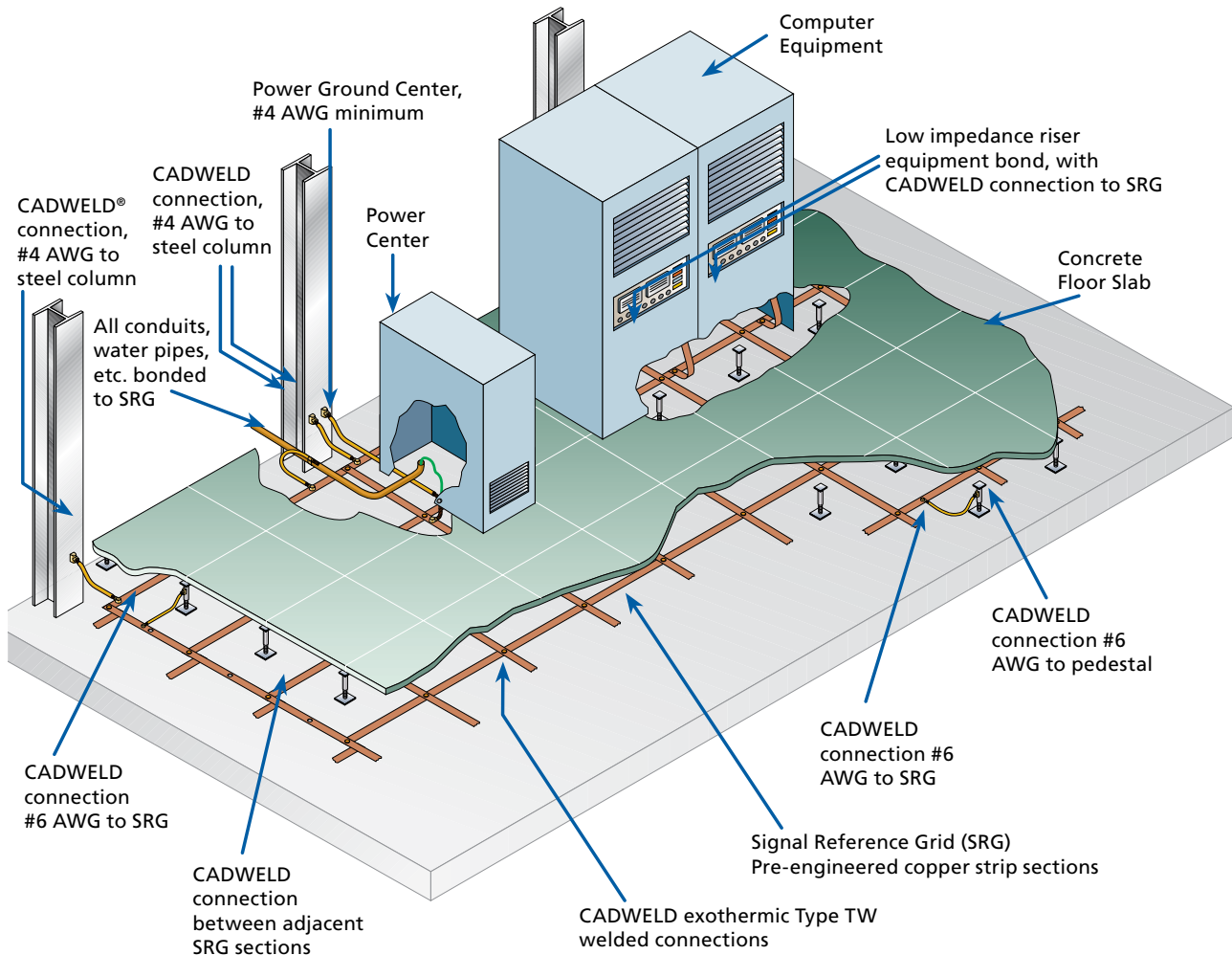
Signal Reference Grid (SRG)

The Signal Reference Grid (SRG) is a pre-fabricated, low impedance network of conductors established to create an equipotential plane for high frequency, low voltage digital signals in such applications as intensive computer, telemetry and telecommunications installations.

Digital signal line voltages are typically low. Their sensitivity to transient noise is very high (typically 1 volt for some digital systems). The SRG complies with IEEE® Standard 1100-1992 for grounding practices in sensitive electronic environments.

Proper grounding and bonding of sensitive electronic systems, including computer installations, requires careful consideration of all frequencies from DC to over 100 megahertz. The local requirements for electrical fault current and lightning protection must also be met.

The safety grounding system required by code does not address the special requirements of noise immunity. An additional "grounding" system called the Signal Reference Grid (SRG) is needed for trouble-free equipment performance.



Important points to consider when installing an SRG:

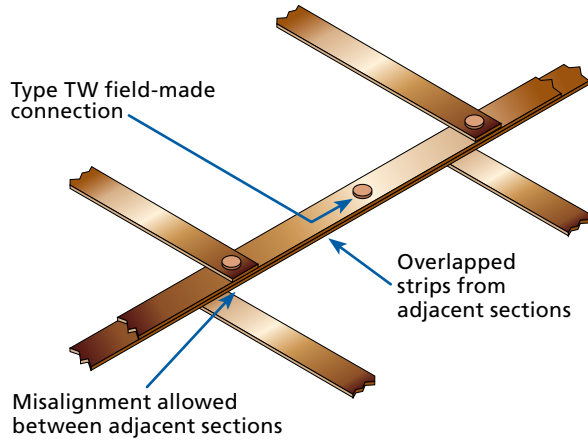
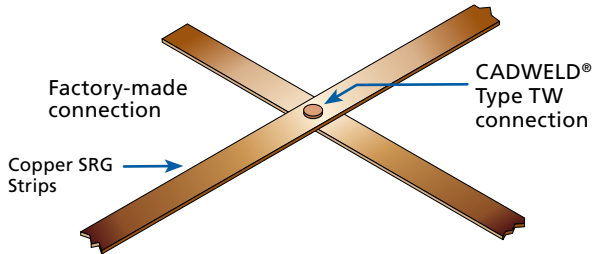
- Local codes must be followed.
- All equipment shall be bonded to the ERITECH® brand of SRG using low impedance risers. Never connect to strip closest to outside wall.
- All raised floors within the computer room should be bolted stringer type.
- Every sixth raised floor pedestal in each direction shall be connected to the SRG using a #6 AWG concentric copper conductor. The connection to both the pedestal and the SRG shall be a CADWELD exothermic connection.
- All columns, conduits, water pipes, ducts, etc. entering the computer room shall be bonded to the SRG (at each end of the room if these are horizontal).
- Power distribution panels and power distribution center should be mounted directly to the building steel or bonded to it by a short length of grounding conductor equal to the "green wire ground" but at least #4 AWG copper. The grounding wire inside any panel or enclosure supplying AC power to the computer must be bonded to its enclosure.



Signal Reference Grid (SRG)

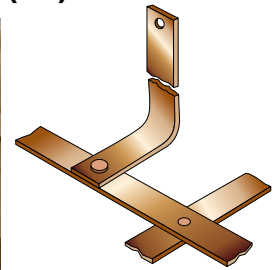
Signal Reference Grids

- Manufactured from 2" wide x 26 gauge (0.0159") copper strips
- Custom sizes available (see part numbering below)



The pre-fabricated Signal Reference Grid sections are constructed with factory-made connections, and then each section is connected on site with type TW field made connections.

Low Impedance Riser (LIR)



- Welded to the SRG using CADWELD® mold type TW
- 5/16" hole in one end for connecting to equipment (same material as SRG)
- 40,481 circular mils
- 23 ohms impedance for 12" length at 20 MHz

| Part No. | Thickness | Width (in) | Length (in) |
|------------|--------------------|------------|-------------|
| B802D01A72 | 26 gauge (0.0159") | 2 | 72 |

SRG Part Numbering

SRG

Grid Spacing

B=24"
C=48"
F=12"
G=36"

Width

A = 4' E = 12' J = 3'
B = 6' F = 14' K = 5'
C = 8' G = 16' L = 7'
D = 10' H = 2' M = 9'

Length in Feet (3 digits)

| Part No. | Grid Spacing (in) | Width (ft) | Length (ft) |
|----------|-------------------|------------|-------------|
| SRGBD100 | 24 x 24 | 10 | 100 |
| SRGBE100 | 24 x 24 | 12 | 100 |
| SRGBG100 | 24 x 24 | 16 | 100 |

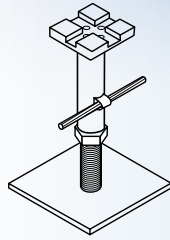
How to Specify

The Signal Reference Grid shall be manufactured from 2" wide by 26 gauge (0.0159 inch thick) copper strips on 2', 600 mm or 1200 mm centers. All crossovers shall be joined by welding. The SRG shall be furnished 4' to 16' wide. The sections shall be rolled on tubes with the outside of the roll protected for shipment. These sections shall be bonded to each other in the field with CADWELD® connections.

Note:

1. Other strip sizes are available
2. Other spacing is available
3. Roll weight usually limited to about 200 lbs. gross weight for convenience (1200 sq. ft.)

Signal Reference Grid (SRG)



CADWELD® Standard Connections to Steel Pedestal

| Conductor Size (7-Strand) | Pedestal Type | CADWELD Mold Part No. | Welding Material | Handle Frame |
|---------------------------|---------------|-----------------------|------------------|--------------|
| #6 AWG | 1" round | VTP1H005M | 15 | B399CS |
| #6 AWG | 7/8" square | VGT1H004M | 15 | B399AS |
| #4 AWG | 1" round | VTP1L003M | 15 | B399CS |
| #4 AWG | 7/8" square | VGT1L010M | 25 | B399AS |
| #2 AWG | 1" round | VTP1V004M | 15 | B399CS |
| #2 AWG | 7/8" square | VGT1V004M | 25 | B399AS |

CADWELD® EXOLON Connections to Steel Pedestal

| Conductor Size (7-Strand) | Pedestal Type | CADWELD Mold Part No. | Welding Material | Handle Frame |
|---------------------------|---------------|-----------------------|------------------|--------------|
| #6 AWG | 1" round | XLVTP1H005M | XL15 | B399CS |
| #6 AWG | 7/8" square | XLVGP1H004M | XL15 | XLB399BS |
| #4 AWG | 1" round | XLVTP1L003M | XL15 | XLB399CS |
| #4 AWG | 7/8" square | XLVGP1L010M | XL15 | XLB399BS |
| #2 AWG | 1" round | XLVTP1V004M | XL15 | XLB399CS |
| #2 AWG | 7/8" square | XLVGP1V004M | XL15 | XLB399BS |

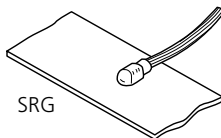
CADWELD® Connections to 26 Gauge x 2" SRG

| Conductor Size (7-Strand) | Mold Style | Mold Part No. | Welding Material | Handle Clamp |
|---------------------------|-------------------------|------------------------|------------------|----------------|
| #6 | CADWELD EXOLON Standard | XLHAC1H013 HAC1H013 | XL25 25 | XLL160 L160 |
| #4 | CADWELD EXOLON Standard | XLHAC1L020 HAC1L020 | XL32 32 | XLL160 L160 |
| #2 | CADWELD EXOLON Standard | XLHAC1V012 HAC1V012 | XL32 32 | XLL160 L160 |

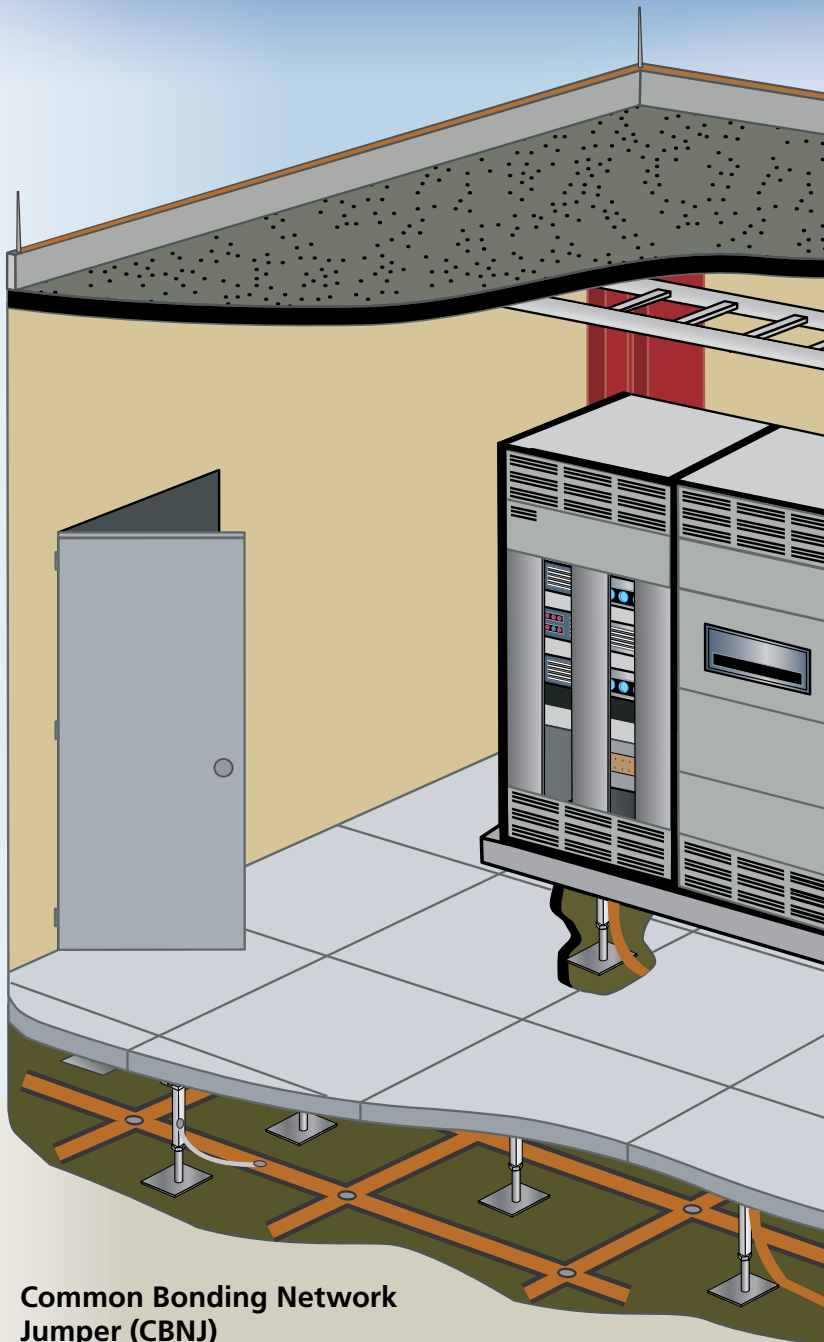
CADWELD® Type TW Connections



| Mold Part No. | Mold Style | Welding Material | Handle Clamp |
|---------------|-----------------|------------------|--------------|
| XLTWR107A3 | CADWELD® EXOLON | XL32 | XLL160 |
| TWR107A3 | Standard | 32 | L160 |



*CADWELD EXOLON is a low-emission welding process and is recommended for retrofit jobs. To start the CADWELD EXOLON reaction, the CADWELD EXOLON battery pack is required (part # **XLB971A1**). Welding tray (part # **XLB974B2**) can be used under the mold to protect cables and equipment from hot materials.



Common Bonding Network Jumper (CBNJ)

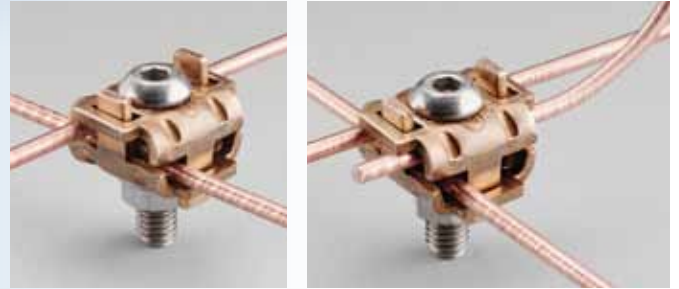


- Helps to achieve a secure electrical connection in telecommunications
- Stranded wire allows for small radius bends
- Tinned copper lug and hardware included

| Part No. | Cable Size (AWG) | Cable Length (ft) | Standard Package |
|-----------|------------------|-------------------|------------------|
| CBNJ09 | 6 Stranded | 9 | 25 |
| CBNJ09P10 | 6 Stranded | 9 | 50 |

Signal Reference Grid (SRG)

Mesh Bonding Network Connectors



SRGC46

SRGC46



MBNC

- MBNC heavy duty clamps with stainless steel hardware, suitable for direct burial (UL® 467 Listed)
- Allow for fast, simple and economical field connection of grounding and bonding wires
- Can accommodate additional pigtailed that can be used to connect to building steel and equipment
- Can be combined with Universal Pedestal Clamp (part # UPCJ) for bonding to various pedestal sizes for mesh bonding networks (MBN)

| Part No. | Conductor Range (AWG)* | Conductor Range (Metric) | Standard Package |
|----------|------------------------|---|------------------|
| MBNC82 | 8 solid – 2 stranded | 10 mm ² – 35 mm ² | 25 |

* Stranded conductors #8 – 2 AWG (10 mm² – 35 mm²): 7 or 19 strands

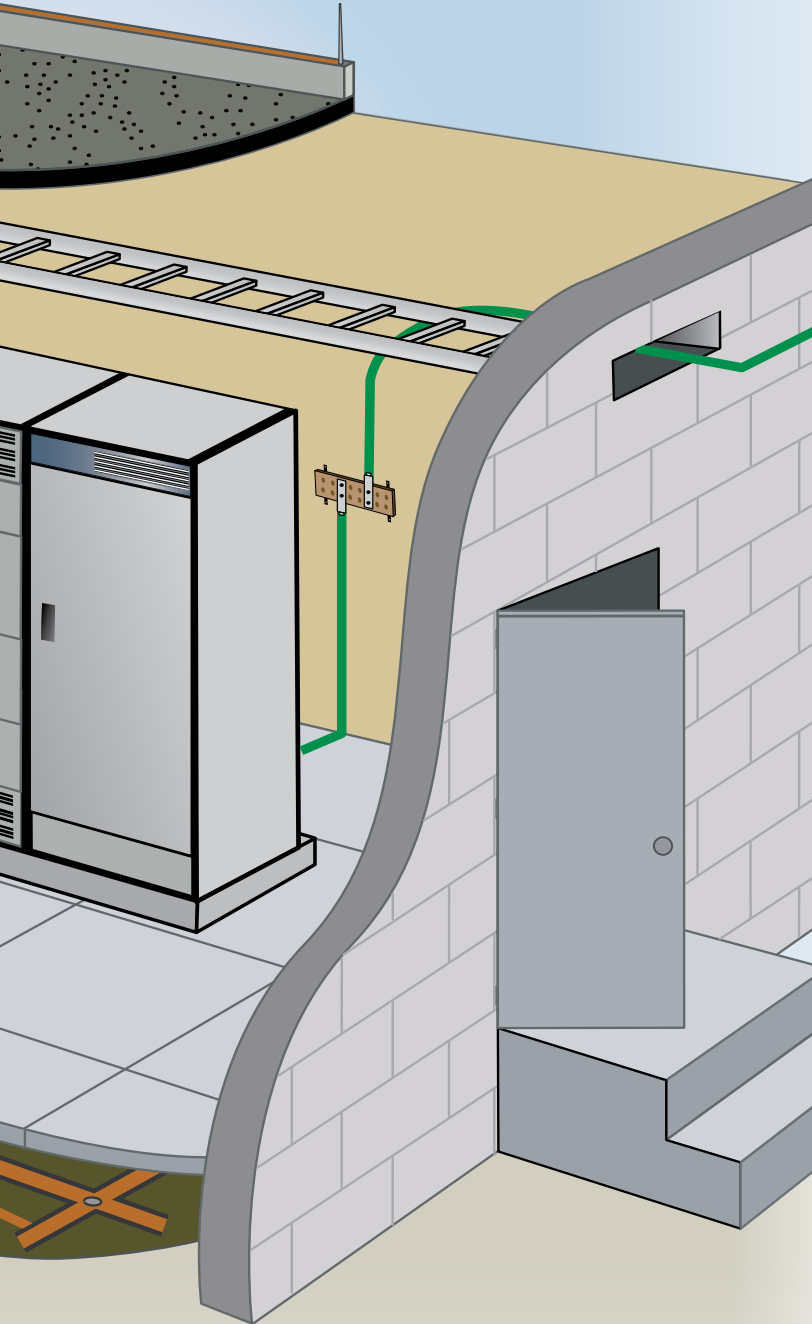
Universal Pedestal Clamp with Cable Management Feature



- Only one attachment required for both mesh bonding and cable management
- Eliminate need for separate mounting brackets for different pedestal types or sizes
- Stainless steel construction of bracket and hardware reduces potential for galvanic corrosion
- Mesh bonding conductors do not have to bend around each pedestal to conform to grid pattern
- UL® Listed as a grounding/bonding clamp in addition to a cable support (Full Code compliance NEC® Article 250 and 300)

| Part No. | Conductor Range (AWG)* | Conductor Range (Metric)* | Pedestal Size (Round or Square) | Standard Package |
|-----------|------------------------|---|---------------------------------|------------------|
| MBNUPCJ82 | 8 solid – 2 stranded | 10 mm ² – 35 mm ² | 7/8" – 2" (2.2 cm – 5.1 cm) | 25 |

* Stranded conductors #8 – 2 AWG (10 mm² – 35 mm²): 7 or 19 strands



SRG Clamp & Connector



| Part No. | Description | Standard Package |
|----------|---|------------------|
| SRGC46 | SRG Connector for #4 and #6 AWG solid or stranded conductor | 20 |
| SRGC46BR | Pedestal mounting bracket for 7/8" square or 1" round pedestals | 10 |

Equipotential Mesh and Mats

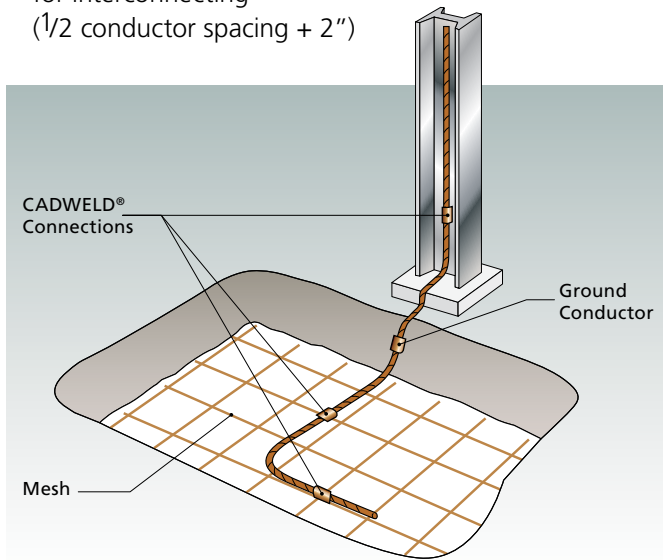
Prefabricated Wire Mesh

ERITECH® brand of prefabricated wire mesh from ERICO is a convenient, efficient and economical means of improving grounding systems at facilities with high-voltage installations and wherever large area grounds are required. Equipotential mesh reduces step potentials at power plants and substations, and effectively minimizes ground plane fluctuations at communications antenna sites. Wire mesh is also an excellent ground screen, reflector and electronic shield for large facilities.

Personnel safety mats, made of prefabricated wire mesh, are ideal for systems designed to protect operators against "touch potentials" at manually operated disconnect switches.

Equipotential Mesh Features

- Silver brazed joints provide strength to resist separation during installation and bear the traffic of heavy vehicles
 - Furnished in rolls up to 20' wide
 - 500 lbs. maximum weight
 - Conductor spacing in many rectangular configurations up to 24" x 48" in 2" increments
 - Normally supplied in sections with standard overhang for interconnecting
- ($\frac{1}{2}$ conductor spacing + 2")



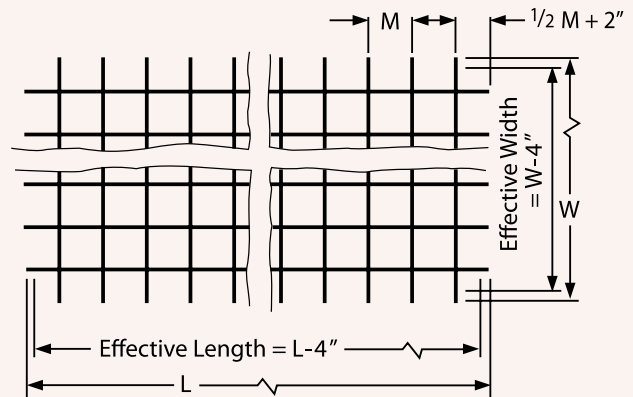
Available Wire Sizes and Conductivity

| Wire Size (AWG) | Material | Conductivity |
|-----------------|-------------------|--------------|
| #6 | pure copper | 100% |
| #6 | copper-clad steel | 30% or 40% |
| #8 | pure copper | 100% |
| #8 | copper-clad steel | 30% or 40% |
| #10 | pure copper | 100% |

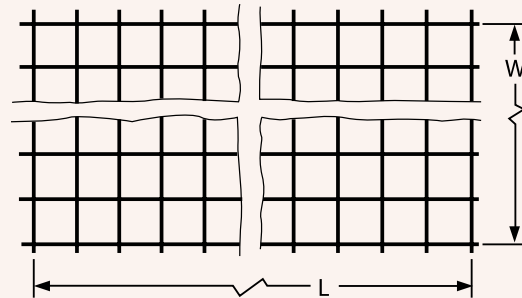
Overhang Configurations

M = Conductor Spacing
L = Total Length
W = Total Width

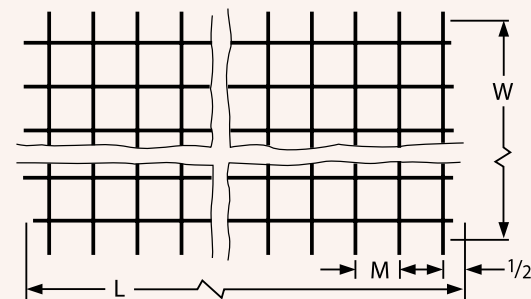
Standard overhang for interconnecting sections of mesh



No overhang



Half-spacing overhang



Equipotential Mesh and Mats

Easy Installation

- No digging or trenching required
- Unroll over the ground
- Interconnect by welding to adjacent sections of mesh using CADWELD®
- Weld to the main ground grid in substations or welded to ground rods
- May be covered with a layer of earth or crushed stone depending on the application

Interconnecting

- The CADWELD process provides a rapid and economical method of interconnecting mesh in the field
- Resulting weld is permanent and corrosion resistant
- Current carrying capacity equal to that of the conductor

Weight of Mesh

Net Weight (lbs) per 100 Square Feet ^Δ

| Conductor Spacing (in) | Copper-clad Steel Wire (AWG) | | | Solid Copper Wire (AWG) | | |
|------------------------|------------------------------|-----|-----|-------------------------|-----|-----|
| | #6 | #8 | #10 | #6 | #8 | #10 |
| 2 x 2 | 888 | 558 | 351 | 974 | 609 | 383 |
| 4 x 4 | 443 | 279 | 175 | 487 | 305 | 192 |
| 6 x 6 | 295 | 186 | 117 | 325 | 203 | 128 |
| 8 x 8 | 222 | 139 | 88 | 243 | 153 | 96 |
| 12 x 12 | 148 | 93 | 59 | 163 | 102 | 64 |
| 24 x 24 | 74 | 47 | 29 | 91 | 51 | 32 |
| 48 x 48 | 56 | 35 | 23 | 62 | 38 | 24 |

Δ Add 75 lbs per roll for approximate shipping weight.

Suggested Specifications

Prefabricated wire mesh shall be manufactured using (a)* AWG bare, solid (b)* wire on a (c)* inch x (c)* inch conductor spacing with all cross connections silver brazed using a 35% silver alloy brazing material and a non-corrosive flux. It shall be (d)* feet, (d)* inches wide by (e)* feet, (e)* inches long with (f)* inches overhang on both sides and both ends, and shall be wound on a fiber tube with the outside of the roll protected by wood strips interconnected with steel wire.

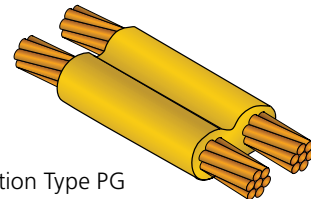
- * (a) Wire size, #6, #8, #10, or #12 AWG.
- (b) 30% or 40% conductivity copper-clad or pure copper.
- (c) 2" x 2" minimum to 48" x 24" maximum (in 2" increments).
- (d) 20', 4" maximum.
- (e) Maximum length determined by weight, with a 500 lbs. maximum net weight.
- (f) No overhang, an overhang equal to one-half conductor spacing or an overhang equal to one-half conductor spacing plus 2" (for interconnecting).



CADWELD® Connections Joining Adjacent Sections of Wire Mesh or Safety Mats

| Solid Wire Sizes (AWG) | CADWELD Mold Part No.* | Welding Material |
|------------------------|------------------------|------------------|
| #6 solid copper | PGT-06CU | 25 |
| #6 copper-clad steel | PGT-06CS | 15 |
| #8 solid copper | PGT-08CU | 15 |
| #8 copper-clad steel | PGT-08CS | 15 |
| #10 solid copper | PGT-10CU | 15 |
| #10 copper-clad steel | PGT-10CS | 15 |

* Includes mold handles.

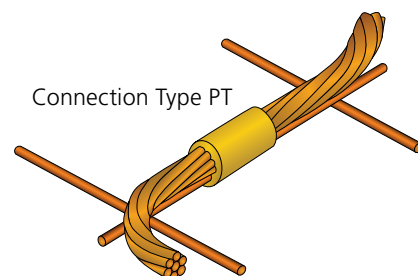


Connection Type PG

CADWELD Connections of Center Wire to Mesh or Safety Mats

| Mat Wire (AWG) | Center Wire Size (AWG) | CADWELD Mold Part No.** | Welding Material |
|----------------|------------------------|-------------------------|------------------|
| #6 Solid | 1/0 | PTC1G2C | 65 |
| | 2/0 | PTC1G2G | 65 |
| | 4/0 | PTC1G2Q | 90 |
| #8 Solid | 1/0 | PTC1D2C | 65 |
| | 2/0 | PTC1D2G | 65 |
| | 4/0 | PTC1D2Q | 90 |
| #10 Solid | 1/0 | PTC1A2C | 65 |
| | 2/0 | PTC1A2G | 65 |
| | 4/0 | PTC1A2Q | 90 |

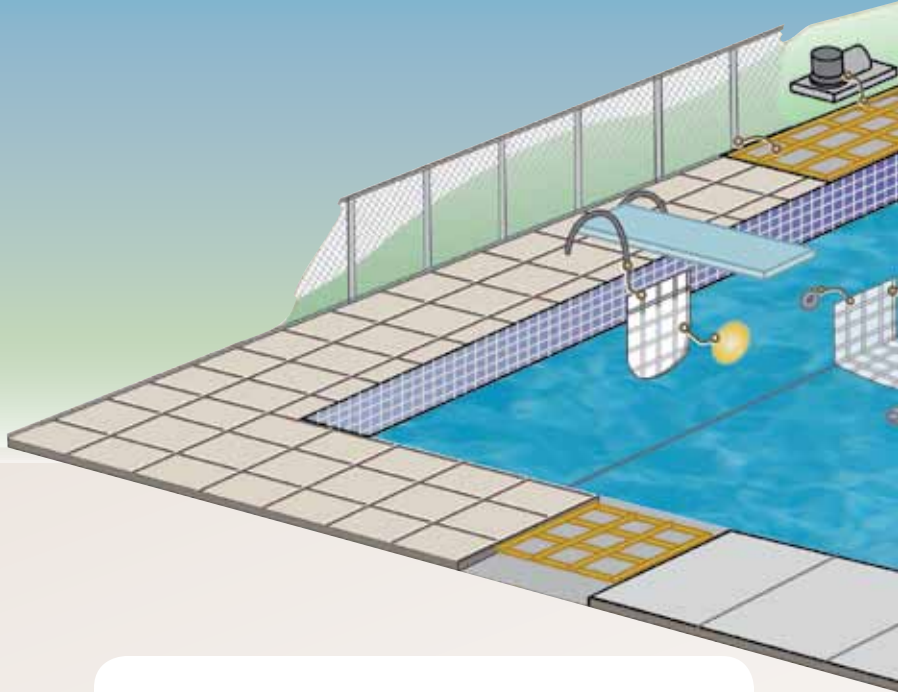
** Molds require L160 handle clamps sold separately.



Connection Type PT

Equipotential Mesh and Mats

Personnel Safety Mats



Available Mat Wire Sizes and Materials

| Wire Size (AWG) | Material | Conductivity |
|-----------------|-------------------|--------------|
| #4 | pure copper | 100% |
| #6 | pure copper | 100% |
| #6 | copper-clad steel | 30% or 40% |
| #8 | pure copper | 100% |
| #8 | copper-clad steel | 30% or 40% |

| Standard Mat Sizes (ft) |
|-------------------------|
| 4 x 4 |
| 4 x 6 |
| 6 x 8 |

| Conductor Spacing (in) |
|------------------------|
| 2 x 2 |
| 4 x 4 |
| 6 x 6 |
| 8 x 8 |
| 12 x 12 |

Suggested Specifications

Standard Personnel Safety Mats:

Prefabricated personnel safety mats shall be manufactured using (a)* AWG bare, solid (b)* wire on (c)* inches x (c)* inches conductor spacing. All cross connections shall be silver brazed using a 35% silver brazing alloy and a non-corrosive flux. Overall mat size shall be (d)* feet x (d)* feet.

Mats With Center Wire:

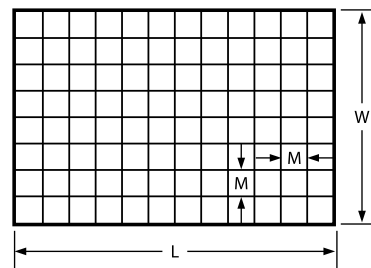
Prefabricated personnel safety mats shall be manufactured using (a)* AWG bare, solid (b)* wire on (c)* inches x (c)* inches conductor spacing with (e)* diameter solid copper center wire through the (f)* length overhanging each end (g)* inches. All cross connections shall be silver brazed using a 35% silver brazing alloy and a non-corrosive flux. Overall mat size shall be (d)* feet x (d)* feet.

- * (a) #4, #6 or #8 AWG (see chart above).
- (b) 30% or 40% conductivity copper-clad or pure copper (#4 available only in pure copper).
- (c) Minimum of 2 inches, maximum of 12 inches in 2-inch increments (not available in 10-inch increments).
- (d) Standard sizes are 4 feet x 4 feet and 4 feet x 6 feet with maximum 6 feet x 8 feet.
- (e) 5/16 inch (1/0 solid) or 3/8 inch (2/0 solid). Stranded cable is also available (see chart above).
- (f) Longest or shortest.
- (g) Center wire is either flush (0-inch overhang) or with a 6-inch overhang.

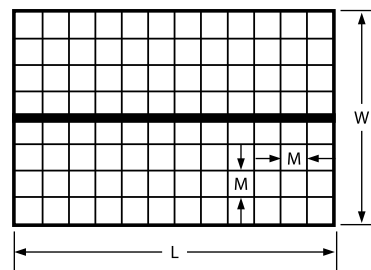
Standard Configurations

M = Conductor Spacing in Inches
L = Length in Feet (not including overhang)
W = Width in Feet

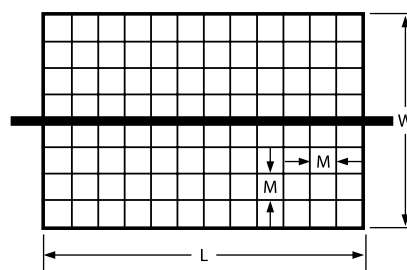
Standard Safety Mat



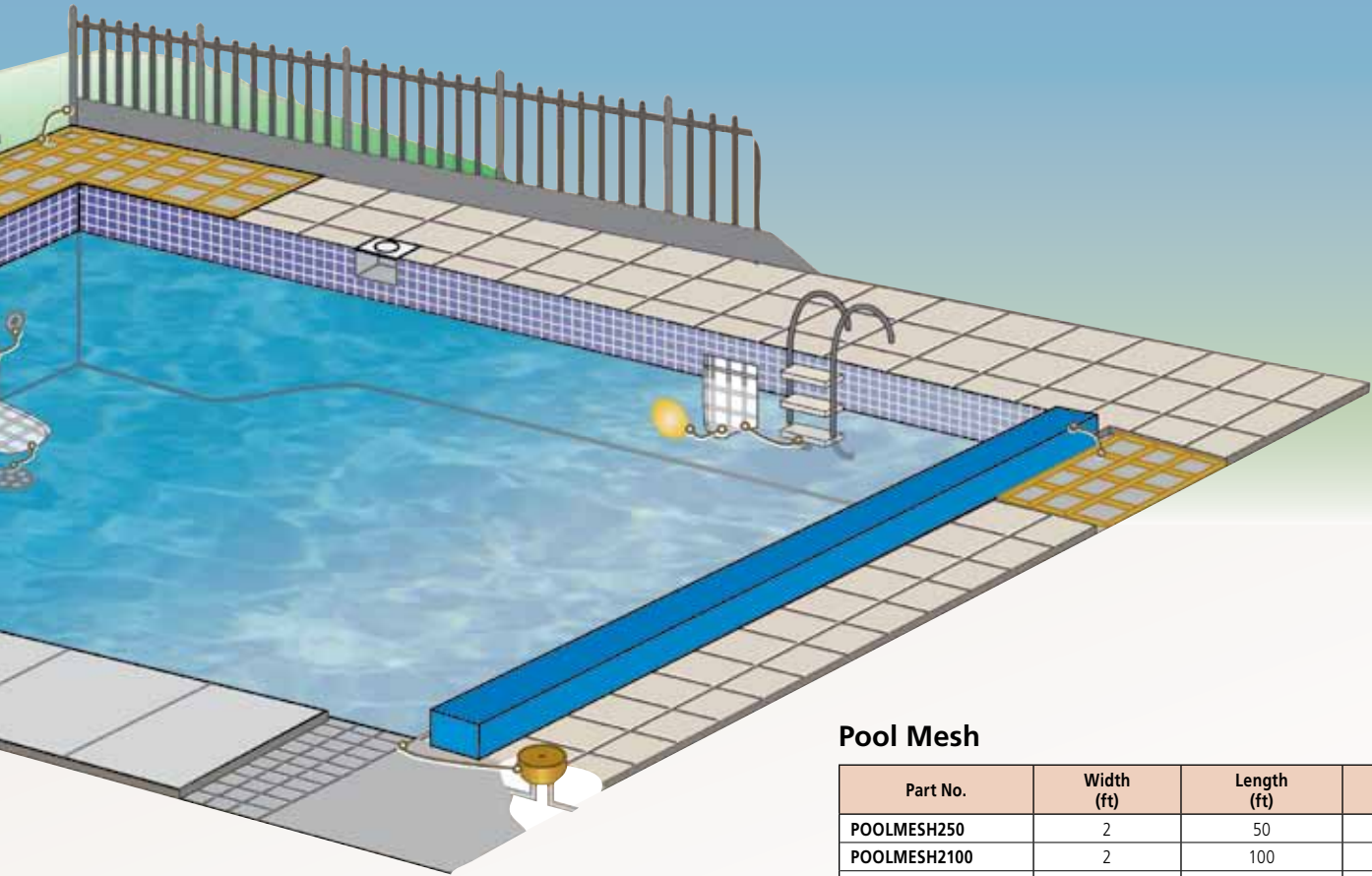
Safety Mat with Center Wire*



Safety Mat with Overhanging Center Wire*



Equipotential Mesh and Mats



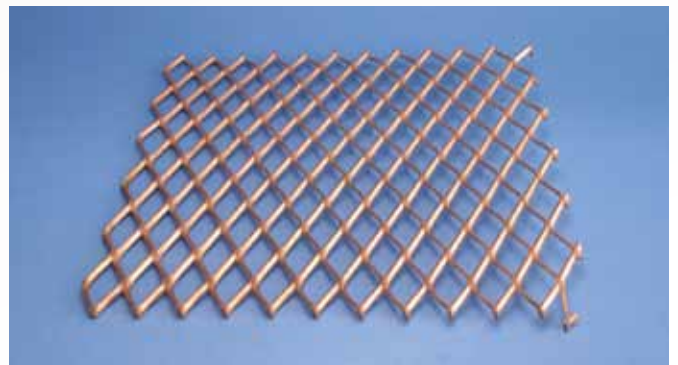
Pool Mesh

| Part No. | Width (ft) | Length (ft) | Conductor (AWG) |
|--------------|------------|-------------|-----------------|
| POOLMESH250 | 2 | 50 | 8 Solid |
| POOLMESH2100 | 2 | 100 | 8 Solid |
| POOLMESH350 | 3 | 50 | 8 Solid |
| POOLMESH3100 | 3 | 100 | 8 Solid |

| Wire Size (AWG) |
|-----------------------|
| 1/0 Solid or Stranded |
| 2/0 Solid or Stranded |
| 4/0 Stranded |
| 250 MCM Stranded |
| 300 MCM Stranded |
| 350 MCM Stranded |
| 500 MCM Stranded |

*Standard Center Wire (length-wise or width-wise)

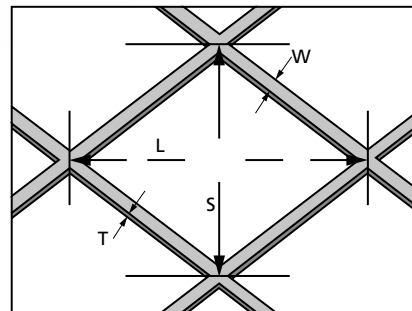
Expanded Metal Mesh



Net Weight (lbs) per Standard Mat*

| Wire Size | Conductor Spacing (in) | | | | | | | | | |
|---------------------------|------------------------|-------|-------|-------|-------|-------|-------|-------|---------|-------|
| | 2 x 2 | | 4 x 4 | | 6 x 6 | | 8 x 8 | | 12 x 12 | |
| | 4 x 4 | 4 x 6 | 4 x 4 | 4 x 6 | 4 x 4 | 4 x 6 | 4 x 4 | 4 x 6 | 4 x 4 | 4 x 6 |
| #6 Copper-clad steel wire | 14.6 | 21.7 | 7.6 | 11.2 | 5.3 | 7.7 | 4.1 | 6.0 | 2.9 | 4.2 |
| #8 Copper-clad steel wire | 9.2 | 13.7 | 4.8 | 7.1 | 3.3 | 4.9 | 2.6 | 3.8 | 1.9 | 2.7 |

* Weights are for copper-clad wire. Add 10% for approximate weight of solid copper wire. Safety mats are palletized for shipment. Add 50 pounds per pallet for gross weight. Maximum of 100 mats per pallet.



L = Long dimension
S = Short dimension
W = Strand width
T = Thickness

Contact ERICO for more information.

Bonding Devices

B21-Series Prefabricated Lug Bonds

Prefabricated lug bonds are custom made to specifications. Common usage includes cable tray bonding and grounding, structure bonds, surge arrester leads and power jumpers.

- Made with bare annealed copper cable
- Tinned copper NEMA® lugs welded to the cable with CADWELD® connections

Part Number Coding

B21 2 1L "X"

B-21 Lug Bond Assembly

Cable Code

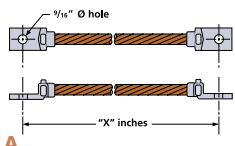
Bond Length in inches
(from outer-most hole center)

#4 Stranded = 1L 1/0 Stranded = 2C
 #2 Stranded = 1V 2/0 Stranded = 2G
 #1 Stranded = 1Y 4/0 Stranded = 2Q
 250 MCM Stranded = 2V

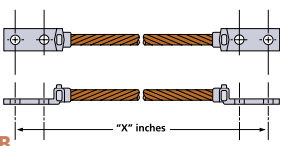
Lug Configuration

Double-Lug Bond, 1-Hole each on Straight Lugs = "2" (see image A)
 Double-Lug Bond, 2-Holes each on Straight Lugs = "3" (see image B)
 Double-Lug Bond, 1-Hole each on 45° Lugs = "4" (see image C)
 Double-Lug Bond, 2-Holes each on 45° Lugs = "5" (see image D)
 Single-Lug Bond Stub, 1-Hole on Straight Lug = "6" (see image E)
 Single-Lug Bond Stub, 2-Holes on Straight Lug = "7" (see image F)
 Single-Lug Bond Stub, 1-Hole on 45° Lug = "8" (see image G)
 Single-Lug Bond Stub, 2-Holes on 45° Lug = "9" (see image H)

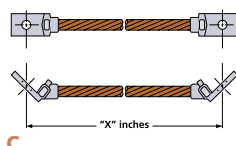
Double-Lug Bond with 1-Hole NEMA Lugs (Straight)



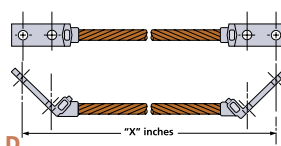
Double-Lug Bond with 2-Hole NEMA Lugs (Straight)



Double-Lug Bond with 1-Hole NEMA Lugs (45° Angle)



Double-Lug Bond with 2-Hole NEMA Lugs (45° Angle)

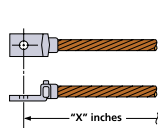


Double-Lug Bond Part No.*

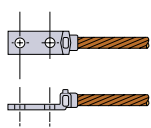
| Cable Size (AWG) | Stranding | Lug Size (in) | B212-parts One Hole | B213-parts Two Hole | B214-parts One Hole 45° | B215-parts Two Hole 45° |
|------------------|-----------|---------------|---------------------|---------------------|-------------------------|-------------------------|
| #4 | 7-strand | 1/8 x 1 | B2121L -"X" | B2131L -"X" | B2141L -"X" | B2151L -"X" |
| #2 | 7-strand | 1/8 x 1 | B2121V -"X" | B2131V -"X" | B2141V -"X" | B2151V -"X" |
| #1 | 7-strand | 1/8 x 1 | B2121Y -"X" | B2131Y -"X" | B2141Y -"X" | B2151Y -"X" |
| 1/0 | 7-strand | 1/8 x 1 | B2122C -"X" | B2132C -"X" | B2142C -"X" | B2152C -"X" |
| 2/0 | 7-strand | 1/8 x 1 | B2122G -"X" | B2132G -"X" | B2142G -"X" | B2152G -"X" |
| 4/0 | 7-strand | 3/16 x 1 | B2122Q -"X" | B2132Q -"X" | B2142Q -"X" | B2152Q -"X" |
| 250 MCM | 19-strand | 3/16 x 1 | B2122V -"X" | B2132V -"X" | B2142V -"X" | B2152V -"X" |

* "X" indicates total bond length in inches.

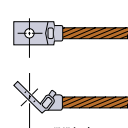
Single-Lug Bond Stub with 1-Hole NEMA Lug (Straight)



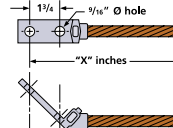
Single-Lug Bond Stub with 2-Hole NEMA Lug (Straight)



Single-Lug Bond Stub with 1-Hole NEMA Lug (45° Angle)



Single-Lug Bond Stub with 2-Hole NEMA Lug (45° Angle)



Single-Lug Bond Stub Part No.*

| Cable Size (AWG) | Stranding | Lug Size (in) | B216-parts One Hole | B217-parts Two Hole | B218-parts One Hole 45° | B219-parts Two Hole 45° |
|------------------|-----------|---------------|---------------------|---------------------|-------------------------|-------------------------|
| 4 | 7-strand | 1/8 x 1 | B2161L -"X" | B2171L -"X" | B2181L -"X" | B2191L -"X" |
| 2 | 7-strand | 1/8 x 1 | B2161V -"X" | B2171V -"X" | B2181V -"X" | B2191V -"X" |
| 1 | 7-strand | 1/8 x 1 | B2161Y -"X" | B2171Y -"X" | B2181Y -"X" | B2191Y -"X" |
| 1/0 | 7-strand | 1/8 x 1 | B2162C -"X" | B2172C -"X" | B2182C -"X" | B2192C -"X" |
| 2/0 | 7-strand | 1/8 x 1 | B2162G -"X" | B2172G -"X" | B2182G -"X" | B2192G -"X" |
| 4/0 | 7-strand | 3/16 x 1 | B2162Q -"X" | B2172Q -"X" | B2182Q -"X" | B2192Q -"X" |
| 250 MCM | 19-strand | 3/16 x 1 | B2162V -"X" | B2172V -"X" | B2182V -"X" | B2192V -"X" |

* "X" indicates total bond length in inches.

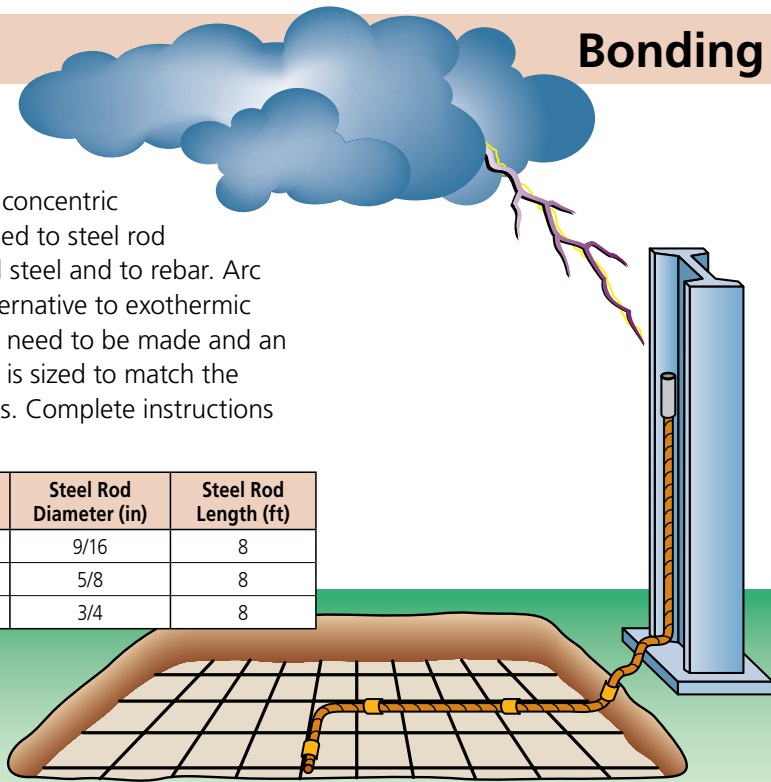


Arc Weldable Bonds

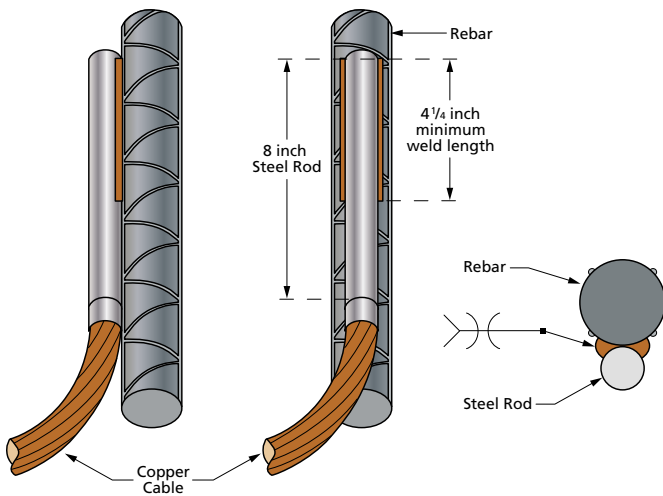
Arc weldable bonds are 4-ft pieces of concentric cable (19-strand) which are flash-welded to steel rod for a bonding connection to structural steel and to rebar. Arc weldable bonds are an economical alternative to exothermic welding when only a few connections need to be made and an arc welder is available on site. The rod is sized to match the ampacity of the cable for fault currents. Complete instructions are provided.

| Part No. | Cable Size (AWG) | Cable Length (ft) | Steel Rod Diameter (in) | Steel Rod Length (ft) |
|-----------|------------------|-------------------|-------------------------|-----------------------|
| EWB2G9164 | 2/0 Stranded | 4 | 9/16 | 8 |
| EWB2L584 | 3/0 Stranded | 4 | 5/8 | 8 |
| EWB2Q344 | 4/0 Stranded | 4 | 3/4 | 8 |

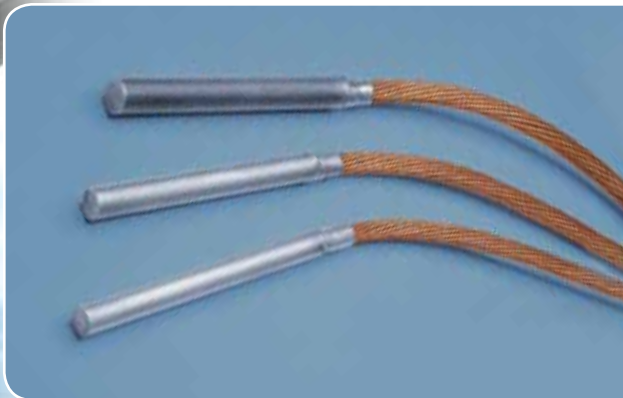
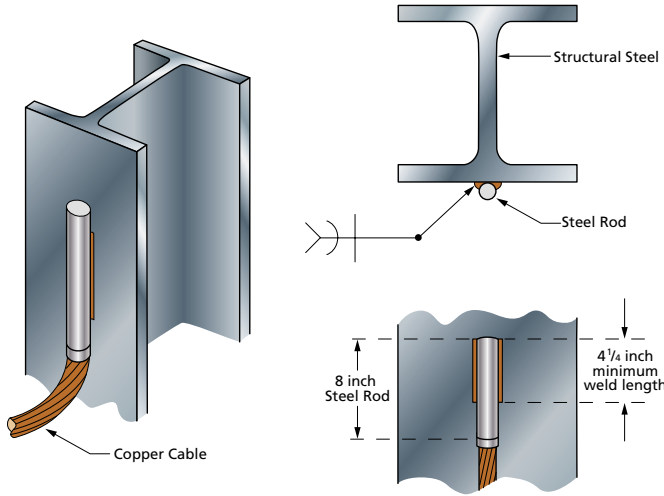
All cable is 19 strand concentric.



Welding to Rebar



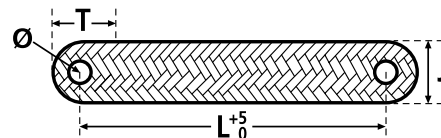
Welding to Building Steel



Copper Bonding Straps



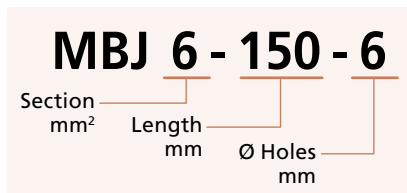
- Tinned electrolytic copper 0.15 mm wire
- UL® 467 File E220029
- Allows bend very close to the contact
- Area working temperature up to 105° C



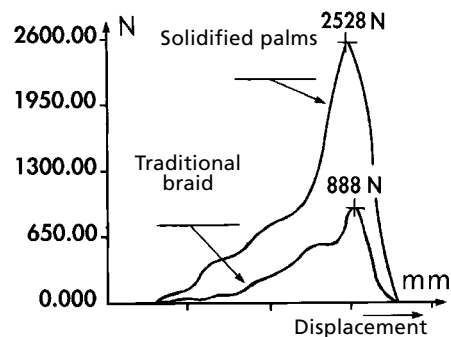
Earth Braids With Integral Palms

Flexible copper bonding straps (or Earth Braids) have one lug hole at each end, and are tinned for bimetallic use. Extra flexible construction for use on hinged or sliding door bond and on vibrating machinery bond. Lug holes for 1/4" diameter bolt.

- Higher electrical contact
- Resistance to vibration and fatigue
- Excellent tensile strength
- Recommended for EMI protection



Comparison of Tensile Strength



MBJ-Series

| Part No. | Description | Ampacity A | Thick. mm | Section mm ² | L mm | Ø mm | J mm | T mm | | |
|----------|---------------|------------|-----------|-------------------------|------|------|------|------|----|--------|
| 556600 | MBJ 6-150-6 | 40 | 1.1 | 6 | 150 | 6.5 | 13 | 23 | 10 | 0.010 |
| 563410 | MBJ 6-200-6 | 40 | 1.1 | 6 | 200 | 6.5 | 13 | 23 | 10 | 0.0167 |
| 556930 | MBJ 10-200-6 | 75 | 1.1 | 10 | 200 | 6.5 | 12 | 22 | 10 | 0.022 |
| 556610 | MBJ 10-300-6 | 75 | 1.1 | 10 | 300 | 6.5 | 12 | 22 | 10 | 0.033 |
| 563540 | MBJ 16-100-6 | 120 | 1.5 | 16 | 100 | 6.5 | 15 | 25 | 10 | 0.018 |
| 556620 | MBJ 16-100-8 | 120 | 1.5 | 16 | 100 | 8.5 | 15 | 25 | 10 | 0.018 |
| 563550 | MBJ 16-150-6 | 120 | 1.5 | 16 | 150 | 6.5 | 15 | 25 | 10 | 0.035 |
| 556630 | MBJ 16-150-8 | 120 | 1.5 | 16 | 150 | 8.5 | 15 | 25 | 10 | 0.035 |
| 563300 | MBJ 16-200-6 | 120 | 1.5 | 16 | 200 | 6.5 | 15 | 25 | 10 | 0.033 |
| 556640 | MBJ 16-200-8 | 120 | 1.5 | 16 | 200 | 8.5 | 15 | 25 | 10 | 0.033 |
| 556650 | MBJ 16-250-8 | 120 | 1.5 | 16 | 250 | 8.5 | 15 | 25 | 10 | 0.040 |
| 563320 | MBJ 16-300-6 | 120 | 1.5 | 16 | 300 | 6.5 | 15 | 25 | 10 | 0.050 |
| 556660 | MBJ 16-300-8 | 120 | 1.5 | 16 | 300 | 8.5 | 15 | 25 | 10 | 0.050 |
| 556940 | MBJ 16-500-8 | 120 | 1.5 | 16 | 500 | 8.5 | 15 | 25 | 10 | 0.082 |
| 556670 | MBJ 25-100-10 | 150 | 1.5 | 25 | 100 | 10.5 | 23 | 33 | 10 | 0.027 |
| 556680 | MBJ 25-150-10 | 150 | 1.5 | 25 | 150 | 10.5 | 23 | 33 | 10 | 0.039 |
| 563340 | MBJ 25-200-6 | 150 | 1.5 | 25 | 200 | 6.5 | 23 | 33 | 10 | 0.052 |
| 556690 | MBJ 25-200-10 | 150 | 1.5 | 25 | 200 | 10.5 | 23 | 33 | 10 | 0.052 |
| 563430 | MBJ 25-200-12 | 150 | 1.5 | 25 | 200 | 12.5 | 23 | 33 | 10 | 0.052 |
| 556700 | MBJ 25-250-10 | 150 | 1.5 | 25 | 250 | 10.5 | 23 | 33 | 10 | 0.064 |
| 556710 | MBJ 25-300-10 | 150 | 1.5 | 25 | 300 | 10.5 | 23 | 33 | 10 | 0.077 |
| 556950 | MBJ 25-500-10 | 150 | 1.5 | 25 | 500 | 10.5 | 23 | 33 | 10 | 0.113 |
| 556720 | MBJ 30-100-10 | 180 | 2 | 30 | 100 | 10.5 | 23 | 33 | 10 | 0.032 |
| 556730 | MBJ 30-150-10 | 180 | 2 | 30 | 150 | 10.5 | 23 | 33 | 10 | 0.047 |
| 556740 | MBJ 30-200-10 | 180 | 2 | 30 | 200 | 10.5 | 23 | 33 | 10 | 0.062 |
| 556750 | MBJ 30-250-10 | 180 | 2 | 30 | 250 | 10.5 | 23 | 33 | 10 | 0.075 |
| 556760 | MBJ 30-300-10 | 180 | 2 | 30 | 300 | 10.5 | 23 | 33 | 10 | 0.092 |
| 556960 | MBJ 30-500-10 | 180 | 2 | 30 | 500 | 10.5 | 23 | 33 | 10 | 0.155 |

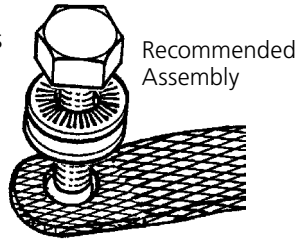
| Part No. | Description | Ampacity A | Thick. mm | Section mm ² | L mm | Ø mm | J mm | T mm | | |
|----------|----------------|------------|-----------|-------------------------|------|------|------|------|----|-------|
| 556770 | MBJ 35-100-10 | 197 | 2.1 | 35 | 100 | 10.5 | 23 | 33 | 10 | 0.037 |
| 556780 | MBJ 35-150-10 | 197 | 2.1 | 35 | 150 | 10.5 | 23 | 33 | 10 | 0.054 |
| 556790 | MBJ 35-200-10 | 197 | 2.1 | 35 | 200 | 10.5 | 23 | 33 | 10 | 0.072 |
| 556800 | MBJ 35-250-10 | 197 | 2.1 | 35 | 250 | 10.5 | 23 | 33 | 10 | 0.089 |
| 565000 | MBJ 35-250-25 | 197 | 2.1 | 35 | 250 | 25.5 | 40 | 50 | 10 | 0.089 |
| 556810 | MBJ 35-300-10 | 197 | 2.1 | 35 | 300 | 10.5 | 23 | 33 | 10 | 0.110 |
| 556970 | MBJ 35-500-10 | 197 | 2.1 | 35 | 500 | 10.5 | 23 | 33 | 10 | 0.180 |
| 556820 | MBJ 50-100-10 | 250 | 2.5 | 50 | 100 | 10.5 | 28 | 38 | 10 | 0.052 |
| 556830 | MBJ 50-150-10 | 250 | 2.5 | 50 | 150 | 10.5 | 28 | 38 | 10 | 0.077 |
| 563350 | MBJ 50-200-6 | 250 | 2.5 | 50 | 200 | 6.5 | 28 | 38 | 10 | 0.120 |
| 556840 | MBJ 50-200-10 | 250 | 2.5 | 50 | 200 | 10.5 | 28 | 38 | 10 | 0.120 |
| 563440 | MBJ 50-200-12 | 250 | 2.5 | 50 | 200 | 12.5 | 28 | 38 | 10 | 0.120 |
| 563360 | MBJ 50-200-16 | 250 | 2.5 | 50 | 200 | 16.5 | 28 | 38 | 10 | 0.110 |
| 563370 | MBJ 50-200-18 | 250 | 2.5 | 50 | 200 | 18.5 | 28 | 38 | 10 | 0.110 |
| 556850 | MBJ 50-250-10 | 250 | 2.5 | 50 | 250 | 10.5 | 28 | 38 | 10 | 0.127 |
| 563380 | MBJ 50-300-6 | 250 | 2.5 | 50 | 300 | 6.5 | 28 | 38 | 10 | 0.150 |
| 556860 | MBJ 50-300-10 | 250 | 2.5 | 50 | 300 | 10.5 | 28 | 38 | 10 | 0.153 |
| 563390 | MBJ 50-300-16 | 250 | 2.5 | 50 | 300 | 16.5 | 28 | 38 | 10 | 0.150 |
| 563400 | MBJ 50-300-18 | 250 | 2.5 | 50 | 300 | 18.5 | 28 | 38 | 10 | 0.140 |
| 556980 | MBJ 50-500-10 | 250 | 2.5 | 50 | 500 | 10.5 | 28 | 38 | 10 | 0.255 |
| 563560 | MBJ 50-500-12 | 250 | 2.5 | 50 | 500 | 12.5 | 28 | 38 | 10 | 0.255 |
| 563450 | MBJ 70-300-6 | 290 | 5 | 70 | 300 | 6.5 | 28 | 38 | 10 | 0.210 |
| 563460 | MBJ 70-300-10 | 290 | 5 | 70 | 300 | 10.5 | 28 | 38 | 10 | 0.210 |
| 563420 | MBJ 70-300-12 | 290 | 5 | 70 | 300 | 12.5 | 28 | 38 | 10 | 0.210 |
| 563470 | MBJ 70-300-16 | 290 | 5 | 70 | 300 | 16.5 | 28 | 38 | 10 | 0.200 |
| 563480 | MBJ 70-300-22 | 290 | 3.5 | 70 | 300 | 22.5 | 40 | 50 | 10 | 0.200 |
| 563490 | MBJ 70-500-10 | 290 | 5 | 70 | 500 | 10.5 | 28 | 38 | 10 | 0.340 |
| 563500 | MBJ 100-250-16 | 349 | 4 | 100 | 250 | 16.5 | 50 | 60 | 10 | 0.254 |
| 563510 | MBJ 100-250-30 | 349 | 4 | 100 | 250 | 30.5 | 50 | 60 | 10 | 0.254 |
| 563520 | MBJ 100-500-16 | 349 | 4 | 100 | 500 | 16.5 | 50 | 60 | 10 | 0.508 |
| 563530 | MBJ 100-500-30 | 349 | 4 | 100 | 500 | 30.5 | 50 | 60 | 10 | 0.508 |




COPPER BONDING STRAPS

Contact Kits

- Metal nuts, bolts and washers for good electrical contact
- 100 nuts – 100 bolts
- 200 flat washers
- 200 contact washers (SAE® Grade 5 hardware)



| Part No. | Description | Torque (ft/lbs) |  |
|----------|--------------------------------|-----------------|---|
| 561400 | Contact Kit 1/4 – 20 x 5/8" | 9 | 100 |
| 561401 | Contact Kit 5/16 – 18 x 1-1/4" | 18 | 100 |
| 561402 | Contact Kit 7/16 – 14 x 1-1/4" | 50 | 100 |
| 561403 | Contact Kit 7/16 – 14 x 2" | 50 | 100 |
| 561404 | Contact Kit 1/2 – 13 x 1-1/4" | 75 | 100 |
| 561405 | Contact Kit 1/2 – 13 x 1-1/2" | 75 | 100 |
| 561406 | Contact Kit 1/2 – 13 x 2" | 75 | 100 |

Cable Runway Ground Strap (CRGS)



- Bonds cable tray, wire mesh tray and cable runway components to the telecommunications grounding and bonding infrastructure
- Offers a better electrical connection than wires with lugs

| Part No. | Braid Cross Sectional Equivalent | Cable Length (in) | Standard Package |
|----------|----------------------------------|-------------------|------------------|
| CRGS6 | 6 Stranded | 8 | 50 |



* Hardware pack (part no. CRGA6HW sold separately).

| Part No. | Description | Screw Size | Standard Package |
|----------|-------------------------|------------|------------------|
| CRGS6HW | Hardware Pack for CRGS6 | #12 - 24 | 50 |



Round braids with crimped lugs

BJ-Series

| Part No. | Description | Section mm ² | L mm | Ø D mm | Intensity A |  |  |
|----------|-------------|-------------------------|------|--------|-------------|---|---|
| 556900 | BJ 6-150 S | 6 | 150 | 6.5 | 45 | 10 | 0.010 |
| 556910 | BJ 6-200 S | 6 | 200 | 6.5 | 45 | 10 | 0.015 |
| 556920 | BJ 10-300 S | 10 | 300 | 6.5 | 75 | 10 | 0.033 |

Custom Solutions (Made-to-order)

ERICO can provide made-to-order, custom configurations to your drawing specifications.

ERIFLEX® brand of copper braids can be made to custom lengths, widths, thicknesses and hole patterns; with PVC insulation; in flat or tubular shapes; using copper wire; in continuous coils; or with soldered studs or crimped lugs. Let ERICO solve your design and production scheduling challenges.



MTO Braid Check List:

*Braid:

Bare Copper _____
 Tinned Copper _____
 Stainless Steel _____

*Contact:

Bare Copper _____
 Nickel Plated _____
 Silver Plated _____
 Tinned Copper _____

Design:

*OAL (Overall Length) _____
 Number of Rows _____
 Number of Layers _____
 *Pad # 1 L _____ x W _____ x T _____
 *Pad #1 Number of holes _____
 *Pad # 2 L _____ x W _____ x T _____
 *Pad #2 Number of holes _____
 *Estimated cross section _____sq.mm

* Must have

Fence Clamp Assemblies

Flexible Jumpers for Fence and Gate Grounding

Made from welding cable, flexible jumpers provide both conductor flexibility and strand protection, and are used to bond gates, switch operating handles and any other item where movement or vibration requires a flexible grounding jumper.

The connections are made with CADWELD® exothermic connections using the same mold required for other fence post connections.

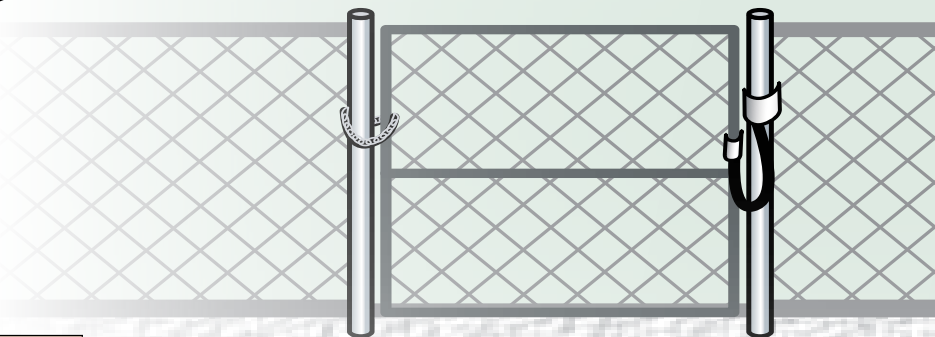
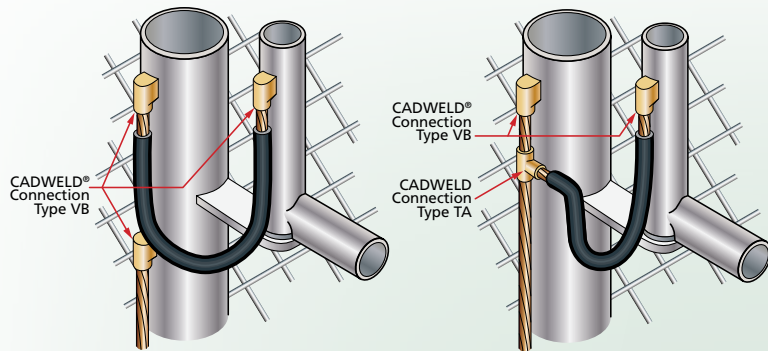


Part Number Coding

Example: **FJ 2Q 24**

Flexible Jumper Cable Code Length of Jumper (inches)

#2 Solid = 1T
2/0 Stranded = 2G
4/0 Stranded = 2Q



| Part No. | Cable Code | Cable Size (AWG) | Length (in) |
|----------|------------|------------------|-------------|
| FJ1T18 | 1T | #2 Stranded | 18 |
| FJ1T24 | 1T | #2 Stranded | 24 |
| FJ1T96 | 1T | #2 Stranded | 96 |
| FJ2G12 | 2G | 2/0 Stranded | 12 |
| FJ2G16 | 2G | 2/0 Stranded | 16 |
| FJ2G18 | 2G | 2/0 Stranded | 18 |
| FJ2G24 | 2G | 2/0 Stranded | 24 |
| FJ2G36 | 2G | 2/0 Stranded | 36 |
| FJ2G48 | 2G | 2/0 Stranded | 48 |
| FJ2G72 | 2G | 2/0 Stranded | 72 |
| FJ2G84 | 2G | 2/0 Stranded | 84 |
| FJ2G96 | 2G | 2/0 Stranded | 96 |
| FJ2G120 | 2G | 2/0 Stranded | 120 |
| FJ2G144 | 2G | 2/0 Stranded | 144 |
| FJ2G156 | 2G | 2/0 Stranded | 156 |
| FJ2G192 | 2G | 2/0 Stranded | 192 |
| FJ2G240 | 2G | 2/0 Stranded | 240 |
| FJ2G300 | 2G | 2/0 Stranded | 300 |
| FJ2G360 | 2G | 2/0 Stranded | 360 |
| FJ2Q12 | 2Q | 4/0 Stranded | 12 |
| FJ2Q16 | 2Q | 4/0 Stranded | 16 |
| FJ2Q18 | 2Q | 4/0 Stranded | 18 |
| FJ2Q24 | 2Q | 4/0 Stranded | 24 |
| FJ2Q36 | 2Q | 4/0 Stranded | 36 |
| FJ2Q48 | 2Q | 4/0 Stranded | 48 |
| FJ2Q60 | 2Q | 4/0 Stranded | 60 |
| FJ2Q96 | 2Q | 4/0 Stranded | 96 |
| FJ2Q120 | 2Q | 4/0 Stranded | 120 |
| FJ2Q144 | 2Q | 4/0 Stranded | 144 |
| FJ2Q156 | 2Q | 4/0 Stranded | 156 |
| FJ2Q180 | 2Q | 4/0 Stranded | 180 |
| FJ2Q192 | 2Q | 4/0 Stranded | 192 |
| FJ2Q240 | 2Q | 4/0 Stranded | 240 |
| FJ2Q252 | 2Q | 4/0 Stranded | 252 |

| Conductor Size (AWG) | Pipe Size (in) | CADWELD Mold Part No. | Welding Material Size |
|----------------------|----------------|-----------------------|-----------------------|
| 2/0 | * | VBC2G008V* | 90 |
| 4/0 | 1-1/4 - 3-1/2 | VBC2G009 | 90 |
| | * | VBC2Q006V* | 115 |
| | 1-1/4 - 3-1/2 | VBC-2Q-003 | 115 |

* Made to exact pipe size. Add nominal pipe size mold to part number.



Example for CADWELD® Mold Part Numbering:

- A 4" outside-diameter pipe is a 3 1/2" nominal pipe size. The mold part number for a 4/0 concentric conductor to this pipe would be:

VSC2Q V 3.50

Base number (for flat surface) For vertical pipe 3 1/2" nominal pipe size

- A nominal 2 x 2 1/4" H section uses mold code PH2. A 4/0 Type VB weld to this post would be VBC2QPH2.

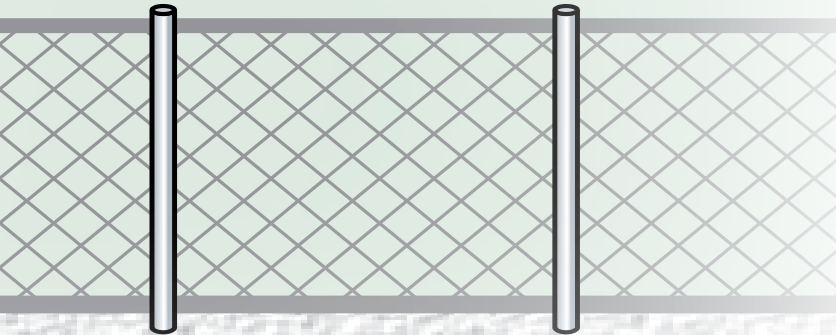


Fence Clamp Assemblies

Fence & Gate Clamp Assemblies

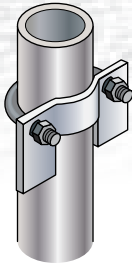


- Ideal for when CADWELD® connections cannot be made to aluminum pipe or thin-wall steel tube
- Made of tinned, electrolytic copper
- Stainless steel hardware
- Available for field-welding or with pre-fabricated cable and ground leads



B522 Fence Clamps for Field-Welded Connections

| Part No. | Nominal Pipe Size (in) |
|----------|------------------------|
| B522B | 1-1/4 |
| B522C | 1-1/2 |
| B522D | 2 |
| B522E | 2-1/2 |
| B522F | 3 |
| B522G | 3-1/2 |
| B522H | 4 |
| B522K | 6 |



| Cable Size (AWG) | CADWELD® Mold Part No. | Welding Material |
|------------------|------------------------|------------------|
| 1/0 | LAC2C002 | 65 |
| 2/0 | LAC2G002 | 65 |
| 4/0 | LAC2Q002 | 90 |



A235 Pre-fabricated Fence Clamp Assemblies with Single Ground Lead

Part Number Coding

Example: **A235 B 2C 3 LH**

A235 Nominal pipe size (inches)
 B = 1-1/4" F = 3"
 C = 1-1/2" G = 3-1/2"
 D = 2" H = 4"
 E = 2-1/2"

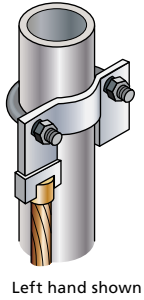
B Cable Code (AWG)
 2C = 1/0 Stranded
 2G = 2/0 Stranded
 2Q = 4/0 Stranded

2C Cable Code (AWG)

3 Ground Lead Length (feet)

LH Left Hand (LH) or Right Hand (RH)

| Part No. | Nominal Pipe Size (in) | Cable Size (AWG) | Ground Lead Length (ft) |
|-------------|------------------------|------------------|-------------------------|
| A235B2C3LH | 1-1/4 | 1/0 Stranded | 3 |
| A235C2C1LH | 1-1/2 | 1/0 Stranded | 1 |
| A235C2C1RH | 1-1/2 | 1/0 Stranded | 1 |
| A235C2G2LH | 1-1/2 | 2/0 Stranded | 2 |
| A235D2C1RH | 2 | 1/0 Stranded | 1 |
| A235D2G2LH | 2 | 2/0 Stranded | 2 |
| A235D2Q4RH | 2 | 4/0 Stranded | 4 |
| A235E2C3RH | 2-1/2 | 1/0 Stranded | 3 |
| A235E2G4LH | 2-1/2 | 2/0 Stranded | 4 |
| A235E2Q2RH | 2-1/2 | 4/0 Stranded | 2 |
| A235F2G2LH | 3 | 2/0 Stranded | 2 |
| A235F2Q10RH | 3 | 4/0 Stranded | 10 |
| A235F2Q5RH | 3 | 4/0 Stranded | 5 |
| A235G2Q2RH | 3-1/2 | 4/0 Stranded | 2 |
| A235G2Q4RH | 3-1/2 | 4/0 Stranded | 4 |
| A235H2C4RH | 4 | 1/0 Stranded | 4 |
| A235H2Q2LH | 4 | 4/0 Stranded | 2 |
| A235H2Q2RH | 4 | 4/0 Stranded | 2 |



Left hand shown

A237 Pre-fabricated Fence Clamp Assemblies with Double Ground Leads

Part Number Coding

Example: **A237 C 2Q 8**

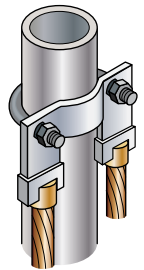
A237 Nominal pipe size (inches)
 B = 1-1/4" F = 3"
 C = 1-1/2" G = 3-1/2"
 D = 2" H = 4"
 E = 2-1/2"

C Cable Code (AWG)
 2C = 1/0 Stranded
 2G = 2/0 Stranded
 2Q = 4/0 Stranded

2Q Cable Code (AWG)

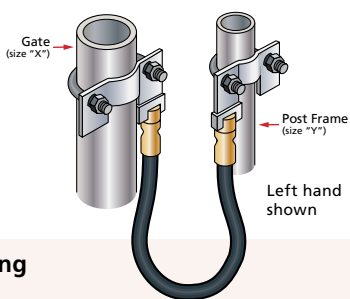
8 Length of each Ground Lead (feet)

| Part No. | Nominal Pipe Size (in) | Cable Size (AWG) | Length of Each Ground Lead (ft) |
|----------|------------------------|------------------|---------------------------------|
| A237C2Q8 | 1-1/2 | 4/0 Stranded | 8 |
| A237D2G1 | 2 | 2/0 Stranded | 1 |
| A237D2G2 | 2 | 2/0 Stranded | 2 |
| A237D2Q4 | 2 | 4/0 Stranded | 4 |
| A237E2Q1 | 2-1/2 | 4/0 Stranded | 1 |
| A237E2Q4 | 2-1/2 | 4/0 Stranded | 4 |
| A237F2C6 | 3 | 1/0 Stranded | 6 |
| A237F2Q4 | 3 | 4/0 Stranded | 4 |
| A237H2C1 | 4 | 1/0 Stranded | 1 |
| A237H2C4 | 4 | 1/0 Stranded | 4 |
| A237H2Q4 | 4 | 4/0 Stranded | 4 |



Fence Clamp Assemblies

A238 Pre-fabricated Gate Jumper Assemblies



Part Number Coding

Example:

A238 "XY" 2S 12 LH

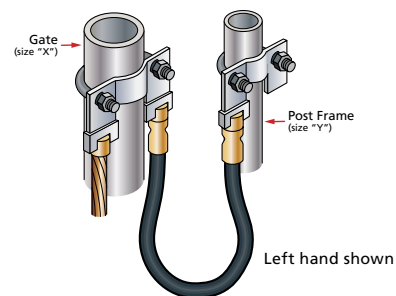
| Nominal Gate Size (in) "X" | Nominal Post Frame Size (in) "Y" | Clamp Codes "XY" |
|----------------------------|----------------------------------|------------------|
| 2 1/2 | 1 1/4 | EB |
| | 1 1/2 | EC |
| 3 | 1 1/4 | FB |
| | 1 1/2 | FC |
| 3 1/2 | 1 1/4 | GB |
| | 1 1/2 | GC |
| 4 | 1 1/4 | HB |
| | 1 1/2 | HC |

4/0 AWG Flexible Jumper Designation

Jumper Length (inches)

Left Hand (LH) or Right Hand (RH)

A239 Pre-fabricated Gate Jumper Assemblies with Ground Lead



Part Number Coding

Example:

A239 "XY" 2S 24 2Q 3 LH

| Nominal Gate Size (in) "X" | Nominal Post Frame Size (in) "Y" | Clamp Codes "XY" |
|----------------------------|----------------------------------|------------------|
| 2 1/2 | 1 1/4 | EB |
| | 1 1/2 | EC |
| 3 | 1 1/4 | FB |
| | 1 1/2 | FC |
| 3 1/2 | 1 1/4 | GB |
| | 1 1/2 | GC |
| 4 | 1 1/4 | HB |
| | 1 1/2 | HC |

Jumper Length (inches)

4/0 AWG Flexible Jumper Designation

Ground Lead Length (feet)

Left Hand (LH) or Right Hand (RH)

Ground Lead Cable Code (AWG)

2C = 1/0 Stranded
2G = 2/0 Stranded
2Q = 4/0 Stranded
9F = Copper-Clad Steel #9, 19-Strand

| Part No. | Nominal Gate Size (in) | Nominal Post Frame Size (in) | Jumper Cable Size (AWG) | Jumper Length (in) |
|--------------|------------------------|------------------------------|-------------------------|--------------------|
| A238EB2S12LH | 2 1/2 | 1 1/4 | 4/0 Stranded | 12 |
| A238EB2S12RH | 2 1/2 | 1 1/4 | 4/0 Stranded | 12 |
| A238EB2S18RH | 2 1/2 | 1 1/4 | 4/0 Stranded | 18 |
| A238EC2S12LH | 2 1/2 | 1 1/2 | 4/0 Stranded | 12 |
| A238EC2S24RH | 2 1/2 | 1 1/2 | 4/0 Stranded | 24 |
| A238EC2S8LH | 2 1/2 | 1 1/2 | 4/0 Stranded | 8 |
| A238FB2S24LH | 3 | 1 1/4 | 4/0 Stranded | 24 |
| A238FC2S12LH | 3 | 1 1/2 | 4/0 Stranded | 12 |
| A238FC2S18RH | 3 | 1 1/2 | 4/0 Stranded | 18 |
| A238FC2S24LH | 3 | 1 1/2 | 4/0 Stranded | 24 |
| A238GC2S12LH | 3 1/2 | 1 1/2 | 4/0 Stranded | 12 |
| A238GC2S18RH | 3 1/2 | 1 1/2 | 4/0 Stranded | 18 |
| A238GC2S24LH | 3 1/2 | 1 1/2 | 4/0 Stranded | 24 |
| A238HB2S18LH | 4 | 1 1/4 | 4/0 Stranded | 18 |
| A238HB2S18RH | 4 | 1 1/4 | 4/0 Stranded | 18 |
| A238HC2S12LH | 4 | 1 1/2 | 4/0 Stranded | 12 |
| A238HC2S15RH | 4 | 1 1/2 | 4/0 Stranded | 15 |
| A238HC2S24LH | 4 | 1 1/2 | 4/0 Stranded | 24 |

| Part No. | Nominal Gate Size (in) | Nominal Post Frame Size (in) | Jumper Cable Size (AWG) | Jumper Length (in) | Ground Lead Cable Size (AWG) | Ground Lead Length (ft) |
|-----------------|------------------------|------------------------------|-------------------------|--------------------|------------------------------|-------------------------|
| A239EB2S242Q3LH | 2 1/2 | 1 1/4 | 4/0 Stranded | 24 | 4/0 Stranded | 3 |
| A239EB2S242Q3RH | 2 1/2 | 1 1/4 | 4/0 Stranded | 24 | 4/0 Stranded | 3 |
| A239EB2S242Q4LH | 2 1/2 | 1 1/4 | 4/0 Stranded | 24 | 4/0 Stranded | 4 |
| A239EC2S182Q6LH | 2 1/2 | 1 1/2 | 4/0 Stranded | 18 | 4/0 Stranded | 6 |
| A239EC2S242C8RH | 2 1/2 | 1 1/2 | 4/0 Stranded | 24 | 1/0 Stranded | 8 |
| A239EC2S242G4LH | 2 1/2 | 1 1/2 | 4/0 Stranded | 24 | 2/0 Stranded | 4 |
| A239EC2S249F6LH | 2 1/2 | 1 1/2 | 4/0 Stranded | 24 | #9, 19-Strand | 6 |
| A239EC2S249F6RH | 2 1/2 | 1 1/2 | 4/0 Stranded | 24 | #9, 19-Strand | 6 |
| A239FC2S142C2RH | 3 | 1 1/2 | 4/0 Stranded | 14 | 1/0 Stranded | 2 |
| A239FC2S242C6LH | 3 | 1 1/2 | 4/0 Stranded | 24 | 1/0 Stranded | 6 |
| A239FC2S242G4RH | 3 | 1 1/2 | 4/0 Stranded | 24 | 2/0 Stranded | 4 |
| A239FC2S242Q10R | 3 | 1 1/2 | 4/0 Stranded | 24 | 4/0 Stranded | 10 |
| A239GB2S242Q4LH | 3 1/2 | 1 1/4 | 4/0 Stranded | 24 | 4/0 Stranded | 4 |
| A239GB2S242Q4RH | 3 1/2 | 1 1/4 | 4/0 Stranded | 24 | 4/0 Stranded | 4 |
| A239GC2S122Q2RH | 3 1/2 | 1 1/2 | 4/0 Stranded | 12 | 4/0 Stranded | 2 |
| A239GC2S242Q4LH | 3 1/2 | 1 1/2 | 4/0 Stranded | 24 | 4/0 Stranded | 4 |
| A239GC2S242Q4RH | 3 1/2 | 1 1/2 | 4/0 Stranded | 24 | 4/0 Stranded | 4 |
| A239HB2S122Q4LH | 4 | 1 1/4 | 4/0 Stranded | 12 | 4/0 Stranded | 4 |
| A239HB2S242Q1RH | 4 | 1 1/4 | 4/0 Stranded | 24 | 4/0 Stranded | 1 |
| A239HB2S242Q4LH | 4 | 1 1/4 | 4/0 Stranded | 24 | 4/0 Stranded | 4 |
| A239HC2S142C2RH | 4 | 1 1/2 | 4/0 Stranded | 14 | 1/0 Stranded | 2 |
| A239HC2S182Q6LH | 4 | 1 1/2 | 4/0 Stranded | 18 | 4/0 Stranded | 6 |
| A239HC2S189F1RH | 4 | 1 1/2 | 4/0 Stranded | 18 | #9, 19-Strand | 1 |
| A239HC2S242C10L | 4 | 1 1/2 | 4/0 Stranded | 24 | 1/0 Stranded | 10 |
| A239HC2S242G2RH | 4 | 1 1/2 | 4/0 Stranded | 24 | 2/0 Stranded | 2 |

Steel Pipe Sizes (Schedule 40)

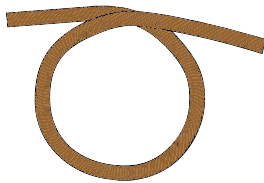
| Nominal Steel Pipe Size (in) | Outside Diameter (in) | Outside Diameter to Nearest Fraction (in) |
|------------------------------|-----------------------|---|
| 1 | 1.315 | 1 1/16 |
| 1 1/4 | 1.660 | 1 5/8 |
| 1 1/2 | 1.900 | 1 7/8 |
| 2 | 2.375 | 2 3/8 |
| 2 1/2 | 2.875 | 2 7/8 |
| 3 | 3.500 | 3 1/2 |
| 3 1/2 | 4.000 | 4 |
| 4 | 4.500 | 4 1/2 |





Cables

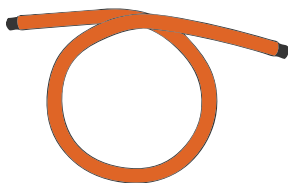
A805A01F Series



- Bare bronze cable
- Extra flexible
- 3/16" diameter

| Part No. | Length (ft) |
|-------------|-------------|
| A805A01F-5 | 5 |
| A805A01F-10 | 10 |
| A805A01F-20 | 20 |

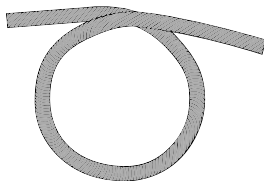
A806A3F Series



- Orange insulated bronze cable
- Extra flexible
- 3/16" diameter

| Part No. | Length (ft) |
|-------------|-------------|
| A806A03F-5 | 5 |
| A806A03F-10 | 10 |
| A806A03F-20 | 20 |

A822SAS Series



- Bare stainless steel cable
- Extra flexible
- 1/8" diameter

| Part No. | Length (ft) |
|------------|-------------|
| A822SAS-5 | 5 |
| A822SAS-10 | 10 |
| A822SAS-20 | 20 |

Cable Reels and Coils

A822SA111C & A822SB11C Series



- Galvanized steel
- 1/8" Orange insulated coiled cable

| Part No. | Length (ft) |
|---------------|-------------|
| A822SA111C-5 | 5 |
| A822SA111C-10 | 10 |
| A822SA111C-20 | 20 |
| A822SB111C20 | 20 |

20' Cable Reel B2618A



- Cable length: 20'
- Cable size: 3/32" diameter bare stainless steel
- Bare bronze cable
- Extra flexible

| Features |
|---|
| Two 1/4" bolt holes to affix Uses only one cable terminator. Other end of cable is grounded through metal reel case. Plated bolting surfaces and base. |

50' Cable Reel B2618B



- Cable length: 50'
- Cable size: 3/32" diameter bare stainless steel

| Features |
|---|
| Two 1/2" bolt holes to affix Uses only one cable terminator. Other end of cable is grounded through metal reel case. Plated bolting surfaces and base. |

Static Grounding and Bonding

Static Grounding Clamps

B2610A Spring Clamp



- Bare bronze cable
- Extra flexible

Features

Die Cast Aluminum
 Max Jaw Opening: 1"
 Throat Depth: 1"
 Max Cable Size: 1/8"
 Contact Points: 2 ea., Stainless Steel
 Release Harness: Not Available

B2611A Spring Clamp



Features

Die Cast Aluminum
 Max Jaw Opening: 1-1/2"
 Throat Depth: 2"
 Max Cable Size: 3/16"
 Contact Points: 3 ea., Stainless Steel
 Release Harness: Included

B2614A Spring Clamp



Features

Bronze
 Max Jaw Opening: 1"
 Throat Depth: 2-1/2"
 Max Cable Size: 3/16"
 Length: 9-1/2"
 Contact Points: 3 ea., Stainless Steel
 Release Harness: Included

B2617A Aircraft Grounding Clamp



Features

Die Cast Aluminum
 Max Jaw Opening: 3/4"
 Throat Depth: 5/32"
 Max Cable Size: 3/16"
 Contact Points: Plated Steel
 Release Harness: Not Available
 Fits rods up to 3/4" and CADWELD® Aircraft Grounding Receptacles B165 and B166

"C" Clamps

"C" Clamp B2615B

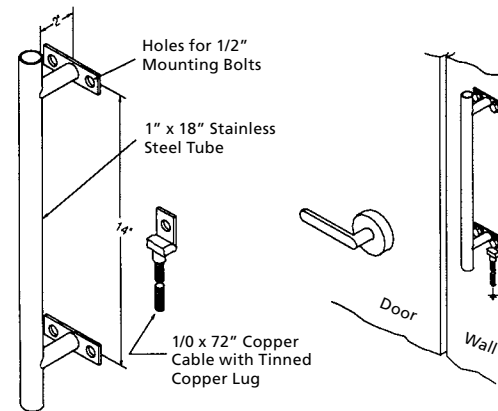


Features

Bronze
 Max Jaw Opening: 1-1/4"
 Throat Depth: 1-1/2"
 Max Cable Size: 3/16"
 Length: 2-1/2"
 Contact Point: Bronze, Includes Crimp Lug

Static Grounding Components

B750A Static Grab Bar



- Stainless Steel
- Length: 18"
- Furnished with 6' of 1/0 AWG copper conductor with a tinned copper lug
- CADWELD® lug attached for connecting to the ground system

Application – Touch before entry into static controlled assembly area.

