



Enclosure Solutions for Fiber & Copper Cable



**Pedestrian / Greenbelt
Light Duty**

Body: HDPE Plastic
Cover: HDPE Plastic

To 3000# Vert. Test Load
ASTM 857
SCTE Pedestrian
Telcordia Core 902



**Pedestrian / Greenbelt
Light Duty "Hard Top"**

Body: HDPE Plastic
Cover: Polymer Concrete

To 5000# Vert. Test Load
ASTM 857
SCTE Pedestrian
Telcordia Core 902



**Right of Way / Sidewalk
Medium Duty**

Body: Polymer
Composite
Ring & Cover: Polymer
Concrete

To 20,000# Vert. Test
Load SCTE-ANSI 77
TIER 5, 8, 15



**Right of Way / Sidewalk
Heavy Duty**

Body: Polymer Concrete
Cover: Polymer Concrete

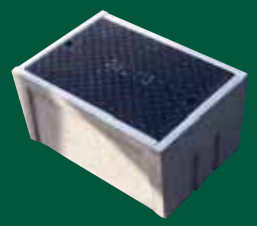
To 45,000# Vert. Test Load
SCTE-ANSI 77
TIER 5, 8, 15, 22



**Road or Parking Lot
Traffic**

Body: 1 3/4" - 3 1/2" Concrete
Cover: 1/2" Steel
Checker Plate

AASHTO H10-44 &
HS20-44





Right of Way / Sidewalk
Medium Duty
 Body: Fibrelyte
 Cover: Fibrelyte

To 8,000# Vert. Test Load
 SCTE-ANSI 77
 TIER 5, 8



Greenbelt / Right of Way
Medium Duty
 Body & Cover: Polymer
 Concrete
 Fiber Distribution Hub
 Cabinet

(Pedestal/Cabinet not included*)



Pedestrian / Greenbelt
Light Duty
 Body: HDPE Plastic
 Cover: HDPE Plastic or
 Polymer Concrete

(Pedestal/Cabinet not included*)

To 3,000# Vert. Test Load
 ASTM 857
 SCTE
 Pedestrian
 Telcordia
 Core 902



Pedestrian / Greenbelt
Light Duty
 Body: HDPE Plastic
 Cover: HDPE Plastic

To 3,000# Vert. Test Load
 ASTM 857
 SCTE Pedestrian
 Telcordia Core 902



Right of Way / Sidewalk
Medium Duty
 Body: 2" Concrete
 Cover: Concrete

Exceeds ASTM C 857, A-0.3
 Pedestrian Traffic
 Requirements

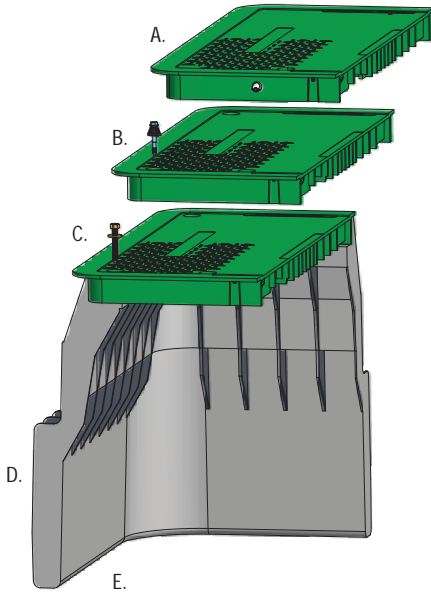


*Contact OPES for a list of compatible pedestal manufacturers

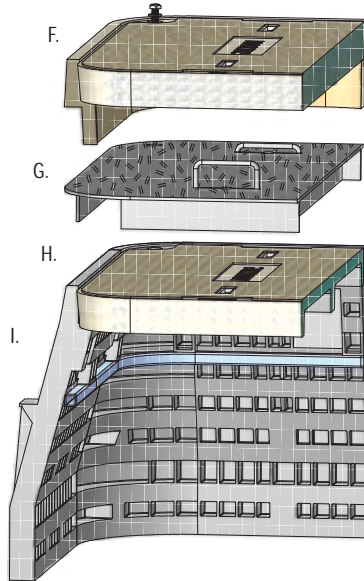


High Density Polyethylene plastic (HDPE), polymer concrete and hybrid grade level enclosures are easy to install and provide strong, durable, chemical and water resistant performance. Hybrid units combine the best characteristics of each material, optimizing cost and performance.

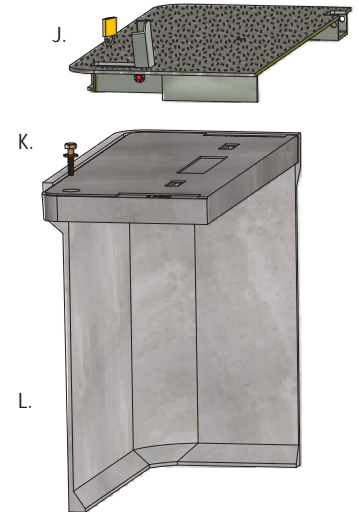
PLASTIC SOLUTIONS



HYBRID DESIGN SOLUTIONS



POLYMER CONCRETE SOLUTIONS H-Series



- **A. HDPE Cover**
 - Hardware Free Drop N Lock Anchor System
 - NO NUTS OR BOLTS REQUIRED!
- **B. HDPE Cover**
 - EZ Lock Self Cleaning Hardware
 - ELIMINATES SEIZING BOLTS
- **C. HDPE T-Cover**
 - Standard Hex or Penta Head Anchor hardware
 - T-COVER PREVENTS DIRT AND STONE CONTAMINATION
- **D. Reinforced Sidewall Design**
 - Featuring 2 bridge strut strength sections
 - ELIMINATES SIDEWALL FLEX TO INSURE COVER & BODY INTEGRITY. AVAILABLE LOOP BRACE FOR CERTIFIED SCTE-ANSI 77 TIER 5 PERFORMANCE.
- **E. Tapered Side Wall Design**
 - Maximizes internal volume
 - UP TO 40% MORE WORK OR STORAGE SPACE vs STRAIGHT WALL DESIGNS. ACCOMMODATES LARGER CABLE BEND RADIUS. MORE SPACE FOR PASSIVE & ACTIVE COMPONENT PLACEMENT

- **F. Polymer Concrete "Ring & Cover"**
 - Standard Hex / Penta / Vandal Proof hardware
 - "HARD TOP" PC COVER DESIGN HANDLES NON-DELIBERATE TIRE TRAFFIC. HEAVY DUTY PC COVER RATED FOR 20,000# VERTICAL LOAD
- **G. Diamond Plate Steel T-Covers**
 - With standard or padlock anchor hardware
 - MAXIMUM STRENGTH AND COVER DURABILITY
- **H. Drop-in "Light Weight" Polymer Concrete**
 - Standard Hex / Penta / Vandal Proof hardware
 - LIGHT WEIGHT POLYMER CONCRETE FOR REDUCED COVER WEIGHT. MEETS OSHA LIFTING STANDARD (<50#) ON 1730 & SMALLER UNITS. PROVIDES 12,000# VERTICAL LOAD RATING
- **I. HDPE Body**
 - Provides easy conduit access and component mounting flexibility.
 - USES STANDARD HOLE SAW BLADE (NO DIAMOND TIPPED CARBIDE BLADES REQUIRED). EASILY MOUNTED COMPONENT / SLACK CABLE RACKING HARDWARE

- **J. Heavy Duty ¼" Diamond Plate Steel Cover**
 - Custom padlock or standard Hex/Penta cover anchor hardware
- **K. Solid Polymer Concrete Cover**
 - With Hex or Penta Bolt Anchor hardware
 - Cover rated for AASHTO HS20-44 vertical load (45,000#)
- **L. Polymer Concrete Body**
 - Polymer Concrete units are 30% lighter weight than equivalent concrete enclosures, offering reduced shipping costs and longer life cycles than traditional concrete boxes.
 - Polymer Concrete provides stronger compressive and flexural strength resulting in a more durable chip & crack resistant unit.
 - Straight wall Polymer Concrete body. Body rated for AASHTO HS20-44 vertical loading.
 - Polymer Concrete units are resistant to alkaline, acid, weathering and similar forms of deterioration.

Light Duty:

Greenbelt/Pedestrian Rated

Model	Size (LxW)	Available Depths
809	6" Dia	9"
910	9" Dia	10" 18" 20" 36"
1419	14" x 19"	6" 12" 18" 24"
1520	15" x 20"	18" 36"
1220	12" x 20"	6" 12" 18" 24"
1324	13" x 24"	12" 15" 24" 30"
1730	17" x 30"	12" 18" 24" 36" 48"
2200	12" Dia	15" 21" 30"
2424	24" x 24"	18" 24" 30" 36" 42" 48"
2436	24" x 36"	18" 24" 30" 36" 42" 48"
2448	24" x 48"	18" 24" 30" 36" 42" 48"
2460	24" x 60"	18" 24" 30" 36" 42" 48"
3636	36" x 36"	18" 24" 30" 36" 42" 48"
3648	36" x 48"	18" 24" 30" 36" 42" 48"
3660	36" x 60"	18" 24" 30" 36" 42" 48"

Medium Duty:

Incidental, non-deliberate 4 tire, car & small truck traffic

Model	Size (LxW)	Available Depths
1118	11" x 18"	12" 24"
1212	12" x 12"	12" 24"
1324	13" x 24"	15" 18" 30" 36"
1730	17" x 30"	18" 24" 48"
2424	24" x 24"	18" 24" 30" 36" 42" 48"
2436	24" x 36"	18" 24" 30" 36" 42" 48"
2448	24" x 48"	18" 24" 30" 36" 42" 48"
2460	24" x 60"	18" 24" 30" 36" 42" 48"
3636	36" x 36"	18" 24" 30" 36" 42" 48"
3648	36" x 48"	18" 24" 30" 36" 42" 48"
3660	36" x 60"	18" 24" 30" 36" 42" 48"

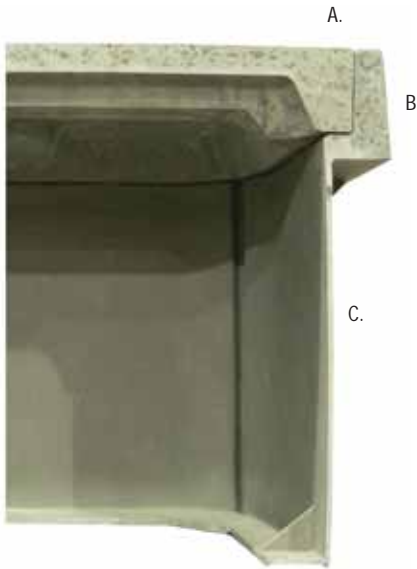
Heavy Duty:

Incidental, non-deliberate 6-18 tire truck traffic

Model	Size (LxW)	Available Depths
910	9" Dia	10" 20"
1118	11" x 18"	12" 18" 24"
1324	13" x 24"	12" 15" 18" 24" 30"
1730	17" x 30"	12" 18" 24" 30" 36"
2436	24" x 36"	18" 24" 30" 36" 42" 48"
3048	30" x 48"	18" 24" 30" 36" 42" 48"
3060	30" x 60"	18" 24" 30" 36" 42" 48"

Note: Heavy duty, all polymer concrete units are rated H-20 and suitable for use in DOT off Roadway" right of way" areas only. Only concrete and steel materials of construction enclosures are suitable for continuous duty vehicular traffic service.

High Density Polymer Concrete combined with the tough and lightweight qualities of Sheet Molding Compound.



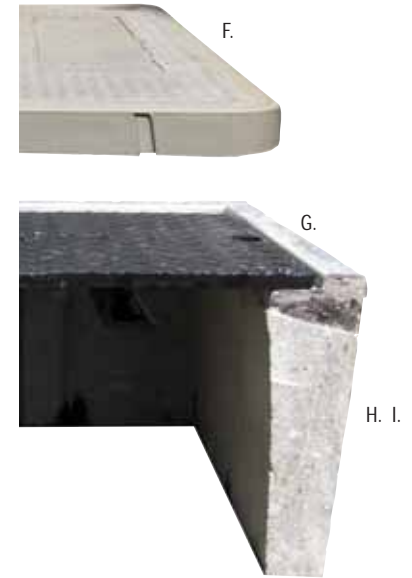
- **A. Polymer Concrete (PC) Cover**
 - Standard Hex or Penta Bolt Anchor hardware. Weight reducing cored out design allows OSHA Section VII "ALLOWABLE HANDLING WEIGHT" compliance. (Sizes up to 17" x 30")
 - Increased coefficient of friction suitable for location in sidewalks or walkways (.05 per W.U.C. Guide 3.6)
 - Covers available with S. Steel Hex, Penta or Vandal Proof locking hardware
- **B. Polymer Concrete (PC) Ring**
 - PC cover support ring is fused with SMC body providing a rigid, straight wall, stackable design.
 - PC ring & covers are unaffected by UV or chemical exposure.
- **C. SMC Composite Body**
 - Straight wall design allows unit stacking for depth adjustment
 - Easy conduit access and component mounting flexibility. USES STANDARD HOLE SAW BLADE (NO DIAMOND TIPPED CARBIDE BLADES REQUIRED). EASILY MOUNTED COMPONENT / SLACK CABLE RACKING HARDWARE
 - Light weight SMC body reduces units weight for ease of field transportation and installation.
 - Units meet ANSI/SCTE 77-2002 TIER 5, TIER 8, TIER 15 performance load ratings (as referenced in the NEC314.30)

A durable and lightweight alternative to concrete.



- **D. Polymer Concrete (PC) Cover**
 - Lightweight, durable Fibrelyte composite material features durable slip resistant cover design
 - Polymer concrete and steel cover options are available.
 - Flush style covers are available with Hex or Vandal Proof locking hardware
- **E. Polymer Composite Body**
 - Lightweight, impact resistant, sloped wall body design provides increased internal volume for cabling and component placement
 - Fibrelyte body provides easy conduit access and component mounting flexibility. USES STANDARD HOLE SAW BLADE (NO DIAMOND TIPPED CARBIDE BLADES REQUIRED). EASILY MOUNTED COMPONENT / SLACK CABLE RACKING HARDWARE
 - Units meet ANSI/SCTE 77-2002 TIER 5 performance load ratings (as referenced in the NEC314.30)

High density reinforced concrete is reliable and cost effective.



- **F. Concrete Cover with Edge Cap**
 - Polypropylene cover edge cap eliminates chipping, cracking and insures cover fit and longevity
 - Features recessed 3/8" or 5/8" Hex, Penta or Vandal Proof bolts
- **G. Galvanized or Finished Black 1/2" Checker Plate Steel Cover**
 - Required for AASHTO H10-44 & HS20-44 "TRAFFIC" rated service.
 - Features recessed 3/8" or 5/8" Hex, Penta or Vandal Proof bolts for roadway service.
- **H. Traffic Rated Concrete Body (shown)**
 - 4" thick concrete body with galvanized steel lid seat cap ring (ring is permanently molded into concrete body). Suitable for AASHTO H10-44 & HS20-44 continuous vehicular traffic service.
- **I. Pedestrian Rated Concrete Body (not shown)**
 - 2" thick concrete body with polypropylene lid seat cap ring (ring is permanently molded into concrete body). Suitable for Western Underground Medium Duty service.

Heavy Duty:

Incidental, non-deliberate 6-18 tire truck traffic

Model	Size (LxW)	Available Depths
Duo 11x18	11" x 18"	12" 18" 24" 30" 36"
Duo 12x12	12" x 12"	12" 18" 24" 30" 36"
Duo 13x24	13" x 24"	12" 18" 24" 30" 36" 42"
Duo 17x30	17" x 30"	12" 18" 24" 30" 36" 42"
Duo 24x36	24" x 36"	18" 24" 36" 42" 48" 60"
Duo 30x48	30" x 48"	18" 24" 36" 42" 48" 60"
Duo 36x60	36" x 60"	24" 36" 48" 60" 72"

Light Duty:

Greenbelt/Pedestrian Rated

Model	Size (LxW) (ID)	Available Depths
FL08	9" Dia	12"
FL09	10" x 17"	12" 24"
FL30	13" x 24"	12" 24"
FL36	17" x 30"	12"

Medium Duty:

Incidental, non-deliberate 4 tire, car & small truck traffic

Model	Size (LxW) (ID)	Available Depths
N09	10" x 17"	12" 24" 36"
N30	13" x 24"	12" 24" 36"
N36	17" x 30"	12" 24" 36"
N40	24" x 36"	14"
N48	30" x 48"	14"
N52	30" x 60"	14"

Traffic*:

Continuous Roadway Traffic

Model	Size (LxW) (ID)	Available Depths
B1017	10" x 17"	12" 24" 36"
B1324	13" x 24"	12" 24" 36"
B1730	17" x 30"	12" 24" 36"
B2436	24" x 36"	12" 24" 36"
B3048	30" x 48"	12" 24" 36"

Blue - Stacked Body Units Red - Extension Units

* Require steel covers to meet Traffic Rating Standards. Other cover options will meet Heavy Duty Standards.

Specifications & Performance Ratings

Standard Load Rating Chart

Class Vehicle	GVW	Maximum Wheel Load	Load Category	Design Load	Failure (Test) Load	Specification
Passenger Car	6000	2400	Pedestrian	300 lb/ ft ²		AASHTO/ ASTM C 857
					3000 lbf	ANSI/ SCTE 77
						Telcordia GR-902
Light Duty Truck; up to Class 3	14000	5600	Tier 5	5000	7500	ANSI/ SCTE 77
			Tier 8	8000	12000	
Medium Duty Truck; up to Class 6	26000	10400	H 10/ A-8	8000	22560	AASHTO/ ASTM C 857
						Telcordia GR-902
						WUG Guide 3.6
Heavy Duty Truck; up to Class 8	40000	16000	Tier 15	15000	22500	ANSI/ SCTE 77
			Tier 22	22500	33750	
			HS 20/ A-16	16000	45120	AASHTO/ ASTM C 857
						Telcordia GR-902
Designated Traffic Lane	40000	16000	HS 20/ A-16	16000	45120	AASHTO/ ASTM C 857

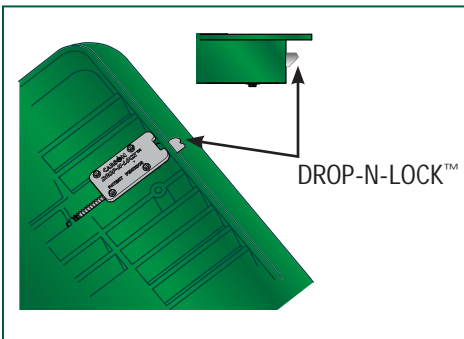
OPES Load Rating Key

- Light Duty : Pedestrian/Greenbelt : 3000# Vertical Test Load
- Medium Duty : Incidental, Non-deliberate 4 Tire, Car & Small Truck Traffic : 8000# Vertical Test Load
- Heavy Duty : Incidental, Non-deliberate 6-18 Tire Truck Traffic : 20,000# Vertical Test Load
- Traffic : Continuous Roadway Traffic : 45,000# Vertical Test Load

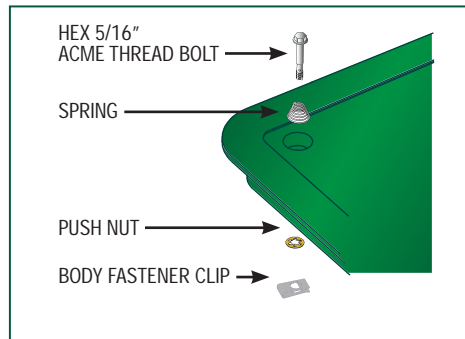
The Rural Utility Service (RUS) is a department of the US Department of Agriculture organized to facilitate rural developments. You will find Carson and Synertech brand enclosures listed by the RUS. Please reference brand specific product data sheets for additional clarifications. All Carson brand enclosures conform to the RUS "Tamper Resistant" fastener design for buried pedestals. Visit www.usda.gov/rus/telecom/index.htm for more information on the RUS.

Cover/Lid Hardware Options

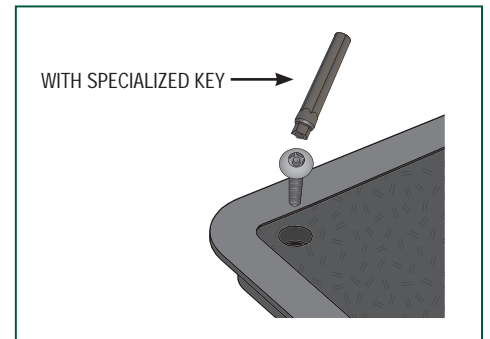
Drop-N-Lock™*



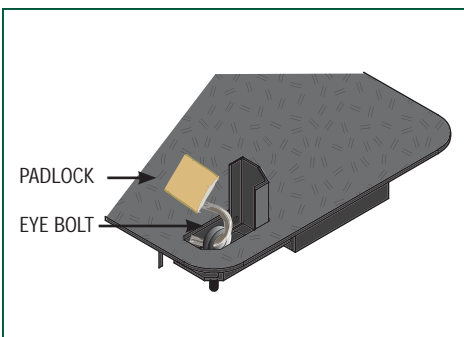
EZ Lock*



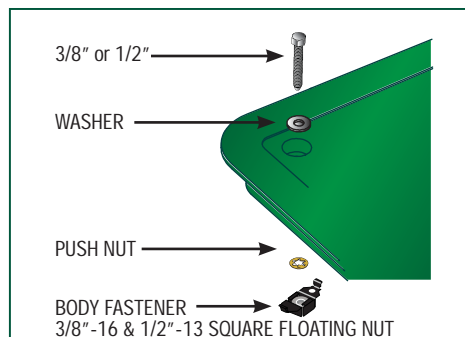
Vandal Proof**



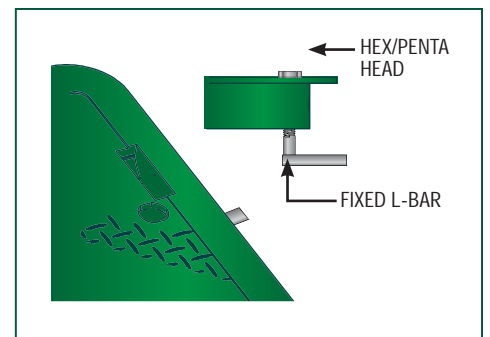
Lockable Steel Cover



Captive Bolt (Hex/Penta Head)**



L-Bolt**



* Only available for HDPE covers ** Available for HDPE, Polymer Concrete and Concrete (limited sizes) covers/lids

Customized Enclosure Solutions

Pedestal Base Vaults



Distribution Cabinet Base Vaults & Pads



OEM Designs

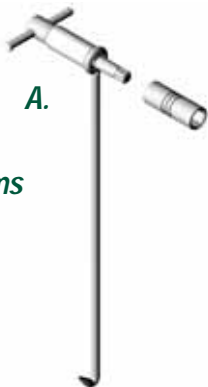


High Security Vaults

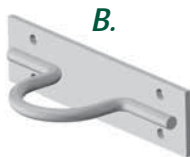


Enclosure Hardware Options and Accessories

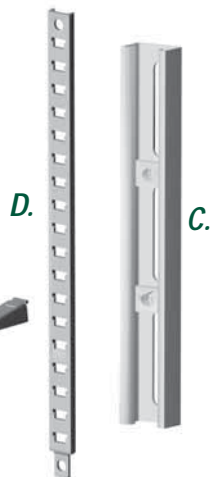
A. Lifting Wrench



B. Pulling Eye



C. Unistrut



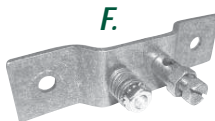
D. Cable Racks/ Cable Arms



E. Electronic Marker



F. Ground Buss



G. Rack Mount



H. Double Wide Univ. Mount Plate



I. Triple Wide Univ. Mount Plate



J. Universal Plate Hanger



CARSON 

Christy

SYNERTECH



Oldcastle Precast[®]
Enclosure Solutions

(800) 735-5566

Delivering Reliability

oldcastleprecast.com/enclosuresolutions

Oldcastle Precast Enclosure Solutions

Oldcastle Precast has combined the products of Carson, Christy and Synertech to form Oldcastle Precast Enclosure Solutions, one of the largest, most innovative manufacturers in the world of enclosure products made from concrete, polymers and plastics. With a nationwide network of facilities, our products are always close at hand. Oldcastle Precast Enclosure Solutions is the global leader with the strongest, most durable materials using leading-edge technologies for designing, manufacturing and supplying enclosure products for the protection of municipal water, irrigation, electric, telecommunications, cable and transportation infrastructures.