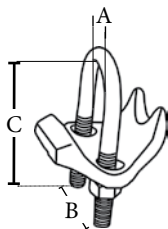


Right Angle Conduit Support

Malleable Iron



E174011
UL 2239
RoHS
NEMA FB1
Federal Spec. A-A-50553



Catalog Number	UPC	Size	Ship Case	Weight/Case	A	B	C
1550	52001	3/8"	50	25	.820	1.00	1.12
1551	52002	1/2"	50	40	1.00	1.25	2.50
1552	52003	3/4"	50	43	1.125	1.125	2.8125
1553	52004	1"	50	48	1.375	1.375	3.0625
1554	52005	1-1/4"	50	53	1.75	1.75	3.1875
1555	52006	1-1/2"	50	58	2.00	2.375	3.50
1556	52007	2"	50	85	2.50	2.50	4.50
1557	52008	2-1/2"	25	106	3.00	3.00	4.875
1558	52009	3"	25	110	3.625	3.875	5.375
1559	52011	3-1/2"	25	128	4.0625	4.5625	5.875
1559A	52010	4"	25	140	4.6875	5.0625	6.6875

Features

- Heavy duty galvanized u-bolt
- Provides a secure connection and tight clamping action capable of withstanding heavy loads

Applications

- Right angle conduit clamps are used to mount EMT or Rigid conduit across or perpendicular to beam, channel or angle supports

Standard Material

- Malleable iron
- Galvanized steel hardware

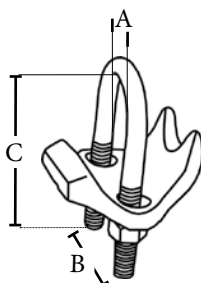
Standard Finish

- Zinc plated

Hot Dip Galvanized



E174011
Conforms to finish thickness
ASTM A123/123M
UL 2239
RoHS
NEMA FB1
Federal Spec. A-A-50553



Catalog Number	UPC	Size	Ship Case	Weight/Case	A	B	C
1551HDG	86579	1/2"	50	20	.97	1.24	2.46
1552HDG	86580	3/4"	50	22	1.15	1.43	2.76
1553HDG	86581	1"	50	24	1.42	1.70	3.01
1554HDG	86582	1-1/4"	50	27	1.79	2.07	3.16
1555HDG	86583	1-1/2"	50	29	2.04	2.32	3.52
1556HDG	86584	2"	25	22	2.49	2.83	4.39
1557HDG	86585	2-1/2"	25	27	3.06	3.39	4.75
1558HDG	86586	3"	25	28	3.65	3.98	5.38
1559HDG	86587	3-1/2"	25	32	4.21	4.55	5.76
1559AHDG	86588	4"	25	35	4.69	5.03	6.27

Features

- Hot dip galvanized for added durability and corrosion protection
- Provides a secure connection and tight clamping action capable of withstanding heavy load

Applications

- Right angle conduit clamps are used to mount EMT or Rigid conduit across or perpendicular to beam, channel or angle supports

Standard Material

- Malleable iron
- Galvanized steel hardware

Standard Finish

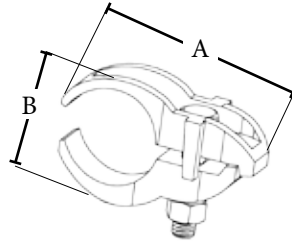
- Hot dip galvanized

Parallel Conduit Support

Malleable Iron



E174011
UL 2239
RoHS
NEMA FBI
Federal Spec. A-A-50553



Features

- Provides a secure connection and tight clamping action capable of withstanding heavy loads

Applications

- Parallel conduit supports are used to mount EMT, Rigid or IMC conduit parallel to a beam, channel or angle support

Standard Material

- Malleable iron
- Galvanized steel hardware

Standard Finish

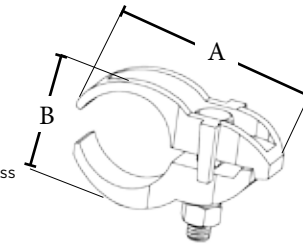
- Zinc plated

Catalog Number	UPC	Size	Ship Case	Weight/Case	A	B
1560	52012	3/8"	50	32	2.00	1.370
1561	52013	1/2"	50	58	2.875	1.4375
1562	52014	3/4"	50	64	3.0625	1.6875
1563	52015	1"	50	70	3.25	2.00
1564	52016	1-1/4"	25	72	3.625	2.125
1565	52017	1-1/2"	25	93	3.875	2.1875
1566	52018	2"	25	100	4.625	2.875
1567	52019	2-1/2"	25	135	5.25	3.25
1568	52020	3"	10	155	5.875	3.875
1569	52021	3-1/2"	10	190	6.3125	4.3125
1570	52022	4"	10	205	6.8125	4.8125

Hot Dip Galvanized



E174011
Conforms to finish thickness
ASTM A123/123M
UL 2239
RoHS
NEMA FBI
Federal Spec. A-A-50553



Features

- Hot dip galvanized for added durability and corrosion protection
- Provides a secure connection and tight clamping action capable of withstanding heavy loads

Applications

- Parallel conduit supports are used to mount EMT, Rigid or IMC conduit parallel to a beam, channel or angle support

Standard Material

- Malleable iron
- Galvanized steel hardware

Standard Finish

- Hot dip galvanized

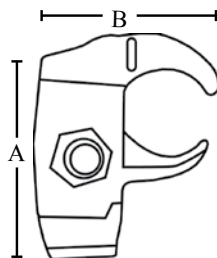
Catalog Number	UPC	Size	Ship Case	Weight/Case	A	B
1561HDG	83233	1/2"	50	29	2.80	1.42
1562HDG	83235	3/4"	50	32	2.99	1.47
1563HDG	83236	1"	50	35	3.19	1.54
1564HDG	86554	1-1/4"	25	18	3.39	2.01
1565HDG	86555	1-1/2"	25	24	3.62	2.01
1566HDG	86556	2"	25	25	4.37	2.87
1567HDG	86557	2-1/2"	10	14	5.12	3.23
1568HDG	86558	3"	10	16	5.79	4.06
1569HDG	86559	3-1/2"	10	19	6.26	4.53
1570HDG	86560	4"	10	22	6.46	4.61

Edge Type Conduit Support

Malleable Iron



E174011
UL 2239
RoHS
NEMA FB1
Federal Spec. A-A-50553



Features

- Provides a secure connection and tight clamping action capable of withstanding heavy loads

Applications

- Edge type conduit supports are used to mount EMT or Rigid conduit perpendicular to a beam, channel or angle support

Standard Material

- Malleable iron
- Galvanized steel hardware

Standard Finish

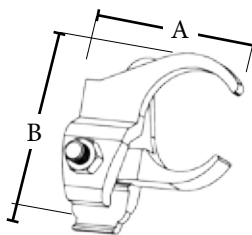
- Zinc plated

Catalog Number	UPC	Size	Ship Case	Weight/Case	A	B
1571	52023	1/2"	50	34	2.8125	2.125
1572	52024	3/4"	50	36	2.9375	2.375
1573	52025	1"	25	43	3.0625	2.625
1574	52026	1-1/4"	25	23	3.0625	3.0625
1575	52027	1-1/2"	25	29	3.9375	3.25
1576	52028	2"	25	34	4.50	4.0625
1577	52029	2-1/2"	10	19	5.125	4.625
1578	52030	3"	10	23	5.75	5.25

Hot Dip Galvanized



E174011
Conforms to finish thickness
ASTM A123/123M
UL 2239
RoHS
NEMA FB1
Federal Spec. A-A-50553



Features

- Hot dip galvanized for added durability and corrosion protection
- Provides a secure connection and tight clamping action capable of withstanding heavy loads

Applications

- Edge type conduit supports are used to mount EMT or Rigid conduit perpendicular to a beam, channel or angle supports

Standard Material

- Malleable iron
- Galvanized steel hardware

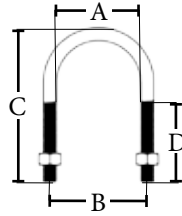
Standard Finish

- Hot dip galvanized

Catalog Number	UPC	Size	Ship Case	Weight/Case	A	B
1571HDG	86561	1/2"	50	34	2.10	2.72
1572HDG	86562	3/4"	50	36	2.44	3.01
1573HDG	86563	1"	50	43	2.57	3.23
1574HDG	86564	1-1/4"	25	23	2.96	3.47
1575HDG	86565	1-1/2"	25	29	3.27	3.65
1576HDG	86566	2"	25	34	3.85	4.36
1577HDG	86567	2-1/2"	10	19	4.40	5.05
1578HDG	86568	3"	10	23	5.08	5.41

U-Bolts

Rigid, EMT & IMC



Features

- For use with Rigid, EMT and IMC conduit
- Engineered to withstand high stress applications

Applications

- Safely run and support conduit in electrical systems

Standard Material

- Steel

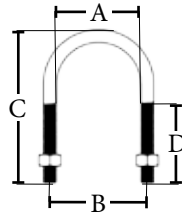
Standard Finish

- Zinc plated

Catalog Number	UPC	Size	Bolt Size	Unit Carton	Ship Case	Weight/Case	A	B	C	D
761	82541	1/2"	5/16"-18	25	250	13	1	1.25	2.50	1.8125
762	82542	3/4"	5/16"-18	25	250	16	1.125	1.375	2.8125	1.8125
763	82543	1"	5/16"-18	25	250	16	1.375	1.625	3.0625	1.8125
764	82544	1-1/4"	5/16"-18	20	200	16	1.75	2	3.1875	1.8125
765	82545	1-1/2"	5/16"-18	20	200	19	2	2.375	3.50	1.8125
766	82546	2"	3/8"-16	20	200	31	2.50	2.50	4.50	2.625
767	82547	2-1/2"	3/8"-16	---	10	31	3	3.25	4.875	2.625
768	82548	3"	3/8"-16	---	10	38	3.625	3.875	5.375	2.625
769	82549	3-1/2"	1/2"-16	---	10	41	4.0625	4.5625	5.875	2.625
770	82550	4"	1/2"-16	---	10	43	4.6875	5.0625	6.6875	2.625

RMC U-Bolt with Hex Nuts

Hot Dip Galvanized



Features

- For use with EMT/Rigid/IMC
- Heavy duty hex nuts included
- Engineered to withstand high stress applications

Applications

- Safely run and support conduit in electrical systems

Standard Material

- Malleable iron

Standard Finish

- Hot dip galvanized

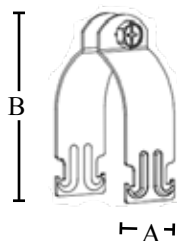
Catalog Number	UPC	Size	Unit Carton	Ship Case	Weight/Case	A	B	C	D
761HDG	86569	1/2"	25	250	13	.97	1.24	2.46	1.50
762HDG	86570	3/4"	25	250	16	1.15	1.43	2.76	1.50
763HDG	86571	1"	25	250	16	1.42	1.70	3.01	1.50
764HDG	86572	1-1/4"	---	20	16	1.79	2.07	3.16	1.50
765HDG	86573	1-1/2"	---	20	19	2.04	2.32	3.52	1.50
766HDG	86574	2"	---	20	31	2.49	2.83	4.39	1.96
767HDG	86575	2-1/2"	---	20	31	3.06	3.39	4.75	1.96
768HDG	86576	3"	---	20	38	3.65	3.98	5.38	1.96
769HDG	86577	3-1/2"	---	20	41	4.21	4.55	5.76	1.96
770HDG	86578	4"	---	20	43	4.69	5.03	6.27	1.96

Universal Strut Clamps

EMT, IMC and Rigid - One Piece Design



E174011
UL 2239
NEMA FB 1
Federal Spec. A-A-50552



Catalog Number	UPC	Size	Ship Case	Weight/Case	A	B
2101CS	87280	1/2"	100	10	1.24	2.23
2102CS	87281	3/4"	100	12	1.24	2.42
2103CS	87282	1"	100	13	1.24	2.77
2104CS	87283	1-1/4"	100	15	1.24	3.09
2105CS	87284	1-1/2"	50	9	1.24	3.38
2106CS	87285	2"	50	10	1.24	3.77
2107CS	87286	2-1/2"	50	14	1.24	4.47
2108CS	87287	3"	25	16	1.24	5.08
2109CS	87288	3-1/2"	25	18	1.24	5.74
2110CS	87289	4"	25	19	1.24	6.30

Features

- Strengthening ribs for heavier loads
- For use with EMT/Rigid and IMC conduit
- One piece clean design for easier handling
- Plastic retainer attached for avoiding accidental loss of high strength bolt during installation
- Integral threads on clamp without nut to save installation time

Applications

- Used to secure EMT, IMC, and Rigid conduits

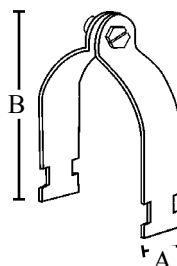
Standard Material

- Steel

Standard Finish

- Zinc plated

EMT and Rigid



Catalog Number	UPC	Size	Ship Case	Weight/Case	A	B
2101	41031	1/2"	100	19	1.24	2.30
2102	41032	3/4"	100	21	1.24	2.46
2103	41033	1"	100	23	1.24	2.68
2104	41034	1-1/4"	100	26	1.24	3.21
2105	41035	1-1/2"	50	26	1.24	3.42
2106	41036	2"	50	31	1.24	4.00
2107	41037	2-1/2"	50	32	1.24	5.00
2108	41038	3"	25	18	1.24	5.55
2109	41039	3-1/2"	25	21	1.24	6.00
2110	41040	4"	25	25	1.24	6.50

Features

- For use with EMT/Rigid and IMC conduit
- All screws - 5/16" x 1-1/4" slotted hex head

Applications

- Used to support stationary pipe and tubing lines from strut channel

Standard Material

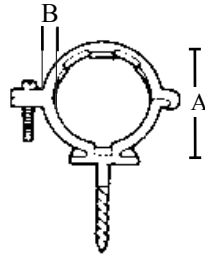
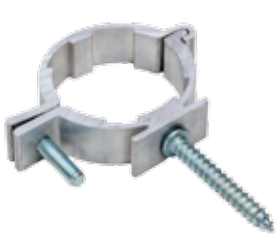
- Steel

Standard Finish

- Zinc plated

Service Entrance Conduit Supports

Aluminum Lag Screw Type



Features

- Accommodates conduit sizes of 2" or 2-1/2"
- Includes lag screw

Applications

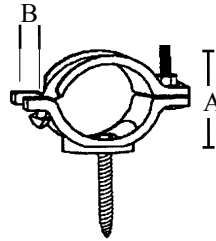
- Affixes conduit to a structure or line pole

Standard Material

- Aluminum

Catalog Number	UPC	Conduit Size	Lag	Ship Case	Weight/ Case	A	B
1000	70250	2"	2.375	25	8	2.875	.875
1000A	70251	2-1/2"	2.75	25	10	3.30	.875

Malleable Iron Lag Screw Type



Features

- Accommodates conduit sizes of 2" or 2-1/2"
- Includes lag screw

Applications

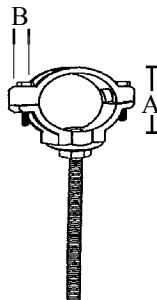
- Affixes conduit to a structure or line pole

Standard Material

- Malleable iron

Catalog Number	UPC	Conduit Size	Lag	Ship Case	Weight/ Case	A	B
1106	19715	2"	2.375	25	37	2.70	.985
1107	19716	2-1/2"	2.375	35	87	3.295	1.080

Split Ring



Features

- Accommodates conduit sizes of 2" - 4"
- Includes lag screw

Applications

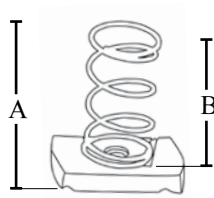
- Affixes conduit to a structure or line pole

Standard Material

- Malleable iron

Catalog Number	UPC	Conduit Size	Bolt Size	Ship Case	Weight/ Case	A	B
1097A	83597	2"	1/2"-10"	25	12	2.70	.985
1097	19711	2-1/2"	1/2"-10"	25	13	3.33	1.071
1098	19712	3"	5/8"-13"	10	25	4.50	1.040
1099	19713	3-1/2"	5/8"-13"	10	27	5.125	1.075
1100	19714	4"	5/8"-13"	10	28	5.593	1.075

Spring Nuts Malleable Iron



Features

- Available for rod sizes of 1/4-20, 3/8-16 and 1/2-13
- Grooves create secure fit and improve traction
- Standard size spring

Applications

- Manufactured for slip resistant support of components in strut system
- For use with 1-5/8" strut channel

Standard Material

- Zinc plated steel

Catalog Number	UPC	Rod Size	Ship Case	Weight/Case	A	B
2111	83691	1/4 - 20	100	7	1.50	1.30
2112	83692	3/8 - 16	100	10	1.77	1.35
2113	83693	1/2 - 13	100	12	1.77	1.35