

Lugs and Connectors



Copper Connectors	149
Copper/Aluminum Connectors	151
Copper Lugs	152
Copper/Aluminum Lugs	155
Oil Seal Lugs	157
SC Series Stem Connectors	157
CP Parallel Clamp	158
CI Series Connectors	159
CI-A Series Connectors	160
CI-T Series Connectors	160
CIR Series Connectors	161
2000T Series Connectors	162

3M™ Scotchlok™ Lugs and Connectors are crimp connectors for power cable conductors. These connectors are used when splicing and terminating power cable.

3M™ Scotchlok™ Connectors 10000 and 11000 Series and Lugs 30000 and 31000 Series

The 3M Scotchlok Connectors 10000 and 11000 Series, and the Lugs 30000 and 31000 Series are used on copper conductors only. They are available in standard or long barrel designs and are constructed of one-piece, seamless high-conductivity copper. (UL 486A Listed)

3M™ Scotchlok™ Connectors 20000 Series and Lugs 40000 Series

The 3M Scotchlok Connectors 20000 Series and Lugs 40000 Series are for use with either copper or aluminum conductors. These aluminum connectors and lugs feature color coded end caps for identification. Contact aid provided in connector and lug barrels is compatible with poly/EPR insulations. (UL 486B Listed)

3M SCOTCHLOK LUGS AND CONNECTORS

FEATURES	ADVANTAGES	BENEFITS
Simple installation using readily available tools	Standard crimping tools	UL Listed for use with a variety of manufacturers' tools
Entrance chambers	Guide cable into crimp area	Facilitate cable insertion

3M™ Connectors CI Series

3M Connectors CI Series are for splicing applications on aluminum or copper cable conductors. The CI Series aluminum connectors are specially designed for use with 3M QS-I, QS-II and QS-III pre-molded power cable splice bodies. These connectors meet the requirements of ANSI C119.4.

3M™ Aerial Stem Connectors SC Series

3M Aerial Stem Connectors SC Series feature an aluminum barrel for installations on either copper or aluminum cable conductors and are used when connecting a riser cable to an overhead line. The SC series connectors are also used when terminating an insulated power cable with 3M terminations. SC series connectors are provided with a factory crimped and sealed copper stem for aerial line connection.

3M™ Lugs OS Series

3M Lugs OS Series are copper lugs that feature a solid oil stop. These lugs are for copper conductors only and are used with 3M 5800-Pb series terminations on paper-insulated lead covered (PILC) cables.

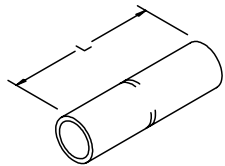
3M™ Connectors CIR Series

3M Connectors CIR Series are specially designed for use with 3M QS-II Repair Splice Kits. They are aluminum connectors for use on aluminum or copper cable conductors. When used with the appropriate splice kit, these connectors allow up to 6 inches (152 mm) of damaged cable conductor to be removed, eliminating the need to splice in a new section of cable. CIR series connectors meet the requirements of ANSI C119.4.

3M™ Scotchlok Connectors 2000T Series

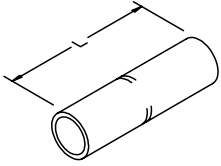
The 2000T Series offers three solutions for your copper and/or aluminum connecting needs for PILC power cable. The 3M Scotchlok Connectors 2000T-CU Series are copper inline sleeves that are for use with copper conductor cables of the same size when connecting copper cable to copper cable only. When you need a product that connects copper and aluminum cables use the 3M Scotchlok Connectors 2000T-CU/AL Series. These connectors feature aluminum inline sleeves that can be used with aluminum or copper conductor cables of the same size. For connecting cables of different sizes and types, the Scotchlok 2000T Reducer Series answers the call. They are aluminum inline sleeves that are applicable for both aluminum and copper conductors, and because the barrel diameters at the connector ends are different, it allows connecting conductors of different sizes. All connectors in the 2000T series feature a solid center oil stop.

Copper Connectors



Specifications and Ordering Information for 3M™ Scotchlok™ Copper Connectors 10000 Series Standard-Barrel up to 35 kV

Product Number	UPC (054007-)	Color Code	Wire Size	Dimensions			Minimum Order Case Qty.
				I.D.	O.D.	L	
10001	12717	Blue	6 AWG	0.196" (5,0 mm)	0.290" (7,3 mm)	1.750" (44,4 mm)	50 each
10002	12725	Gray	4 AWG	0.247" (6,2 mm)	0.340" (8,6 mm)	1.750" (44,4 mm)	50 each
10003	12733	Brown	2 AWG	0.307" (7,8 mm)	0.416" (10,6 mm)	1.880" (47,6 mm)	25 each
10004	12758	Green	1 AWG	0.358" (9,1 mm)	0.462" (11,7 mm)	1.880" (47,6 mm)	10 each
10005	12766	Pink	1/0 AWG	0.394" (10,0 mm)	0.512" (13,0 mm)	1.880" (47,6 mm)	10 each
10006	12774	Black	2/0 AWG	0.439" (11,2 mm)	0.560" (14,2 mm)	2.000" (50,8 mm)	10 each
10007	12790	Orange	3/0 AWG	0.490" (12,4 mm)	0.617" (15,7 mm)	2.130" (54,0 mm)	10 each
10008	12816	Purple	4/0 AWG	0.548" (13,9 mm)	0.687" (17,4 mm)	2.130" (54,0 mm)	10 each
10009	12832	Yellow	250 kcmil	0.595" (15,1 mm)	0.750" (19,1 mm)	2.250" (57,2 mm)	3 each
10010	12857	White	300 kcmil	0.650" (16,5 mm)	0.813" (20,7 mm)	2.250" (57,2 mm)	3 each
10011	12873	Red	350 kcmil	0.700" (17,8 mm)	0.875" (22,2 mm)	2.380" (60,4 mm)	3 each
10014	12899	Brown	500 kcmil	0.836" (21,2 mm)	1.060" (27,0 mm)	2.880" (73,0 mm)	3 each
10019	12915	—	750 kcmil	1.031" (26,2 mm)	1.299" (33,0 mm)	3.380" (85,8 mm)	3 each
10024	12931	—	1000 kcmil	1.173" (29,8 mm)	1.500" (38,1 mm)	3.880" (98,4 mm)	3 each



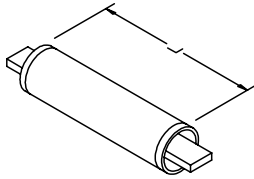
Specifications and Ordering Information for 3M™ Scotchlok™ Copper Connectors 11000 Series Long-Barrel up to 35 kV

Product Number	UPC (054007-)	Color Code	Wire Size	Dimensions			Minimum Order Case Qty.
				I.D.	O.D.	L	
11006	12782	Black	2/0 AWG	0.439" (11,2 mm)	0.560" (14,2 mm)	3.130" (79,4 mm)	10 each
11007	12808	Orange	3/0 AWG	0.490" (12,4 mm)	0.617" (15,7 mm)	3.130" (79,4 mm)	10 each
11008	12824	Purple	4/0 AWG	0.548" (13,9 mm)	0.687" (17,4 mm)	3.380" (85,8 mm)	10 each
11009	12840	Yellow	250 kcmil	0.595" (15,1 mm)	0.750" (19,1 mm)	3.380" (85,8 mm)	3 each
11010	12865	White	300 kcmil	0.650" (16,5 mm)	0.813" (20,7 mm)	4.130" (104,8 mm)	3 each
11011	12881	Red	350 kcmil	0.700" (17,8 mm)	0.875" (22,2 mm)	4.130" (104,8 mm)	3 each
11014	12907	Brown	500 kcmil	0.836" (21,2 mm)	1.060" (27,0 mm)	4.630" (117,5 mm)	3 each
11019	12923	—	750 kcmil	1.031" (26,2 mm)	1.299" (33,0 mm)	5.880" (149,2 mm)	3 each
11024	12949	—	1000 kcmil	1.173" (29,8 mm)	1.500" (38,1 mm)	6.130" (155,6 mm)	3 each

Put the
power in
power
cable



Copper/Aluminum Connectors



PRODUCT REFERRAL GENERATOR

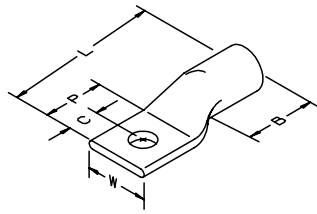
Cold Shrink Splicing	pg. 311
– QS-III Splices	
– 5750 and 5760 Series	
– 8420 Series	
Tape Splicing	pg. 353
– 5700 Series	
Resin Splicing	pg. 330
– 82-A Series	
– 82-F Series	



Specifications and Ordering Information for 3M™ Scotchlok™ Copper/Aluminum Connectors 20000 Series (AL9CU) up to 35 kV

Product Number	UPC (054007-)	Color Code	Wire Size	Dimensions			Minimum Order Case Qty.
				I.D.	O.D.	L	
20001	13236	Gray	6 AWG	0.200" (5,1 mm)	0.344" (8,8 mm)	1.620" (41,1 mm)	50 each
20002	13244	Green	4 AWG	0.265" (6,7 mm)	0.468" (11,8 mm)	1.880" (47,8 mm)	50 each
20003	13251	Pink	2 AWG	0.307" (7,8 mm)	0.531" (13,5 mm)	2.000" (50,8 mm)	25 each
20004	13269	Gold	1 AWG	0.350" (8,9 mm)	0.531" (13,5 mm)	2.000" (50,8 mm)	10 each
20005	13277	Tan	1/0 AWG	0.414" (10,5 mm)	0.640" (16,3 mm)	2.120" (53,8 mm)	10 each
20006	13285	Olive	2/0 AWG	0.439" (11,2 mm)	0.687" (17,4 mm)	2.310" (58,7 mm)	10 each
20007	13293	Ruby	3/0 AWG	0.484" (12,3 mm)	0.760" (19,3 mm)	2.620" (66,5 mm)	10 each
20008	13301	White	4/0 AWG	0.562" (14,3 mm)	0.875" (22,2 mm)	2.750" (69,9 mm)	10 each
20009	13319	Red	250 kcmil	0.594" (15,1 mm)	0.906" (23,0 mm)	2.940" (74,7 mm)	3 each
20010	13327	Dark Blue	300 kcmil (150 mm ²)	0.650" (16,5 mm)	1.010" (25,6 mm)	3.120" (79,2 mm)	3 each
20011	13335	Brown	350 kcmil	0.720" (18,3 mm)	1.105" (28,1 mm)	3.380" (85,9 mm)	3 each
20012	13343	Green	400 kcmil	0.760" (19,3 mm)	1.187" (30,1 mm)	3.750" (95,3 mm)	3 each
20014	13350	Pink	500 kcmil	0.843" (21,4 mm)	1.320" (33,5 mm)	3.880" (98,6 mm)	3 each
20016	13368	Black	600 kcmil	0.923" (23,4 mm)	1.430" (36,3 mm)	4.120" (104,6 mm)	3 each
20019	13376	Yellow	750 kcmil	1.031" (26,2 mm)	1.594" (40,5 mm)	4.620" (117,3 mm)	3 each
20020	13384	Light Blue	800 kcmil	1.051" (26,7 mm)	1.655" (42,0 mm)	4.750" (120,7 mm)	3 each
20024	13392	Brown	1000 kcmil (500 mm ²)	1.193" (30,3 mm)	1.843" (46,8 mm)	5.250" (133,4 mm)	3 each

Copper Lugs



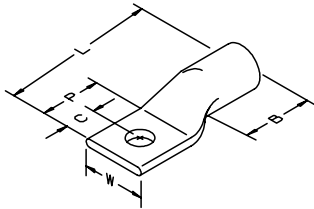
PRODUCT REFERRAL GENERATOR

Terminatingpg. 272
 – QT-III 7600 Series
 Motor Leadpg. 377
 – 5300 Series



Specifications and Ordering Information for 3M™ Scotchlok™ Copper Lugs 30000 Series-One Hole up to 35 kV

Product Number	UPC (054007-)	Color Code	Wire Size	Stud Size	Dimensions						Minimum Order Case Qty.
					I.D.	L	B	W	P	C	
30014	12410	Blue	6 AWG	#10 (5 mm)	0.196" (5,0 mm)	1.780" (45,2 mm)	0.750" (19,1 mm)	0.500" (12,7 mm)	0.750" (19,1 mm)	0.375" (9,5 mm)	50 each
30015	12428	Blue	6 AWG	1/4" (6 mm)	0.196" (5,0 mm)	1.780" (45,2 mm)	0.750" (19,1 mm)	0.500" (12,7 mm)	0.750" (19,1 mm)	0.375" (9,5 mm)	50 each
30016	12436	Blue	6 AWG	5/16" (8 mm)	0.196" (5,0 mm)	1.780" (45,2 mm)	0.750" (19,1 mm)	0.435" (11,0 mm)	0.750" (19,1 mm)	0.375" (9,5 mm)	50 each
30018	12444	Gray	4 AWG	#10 (5 mm)	0.247" (6,3 mm)	1.940" (49,3 mm)	0.750" (19,1 mm)	0.485" (12,3 mm)	0.890" (22,6 mm)	0.375" (9,5 mm)	50 each
30019	12451	Gray	4 AWG	1/4" (6 mm)	0.247" (6,3 mm)	1.940" (49,3 mm)	0.750" (19,1 mm)	0.485" (12,3 mm)	0.890" (22,6 mm)	0.375" (9,5 mm)	50 each
30021	12469	Gray	4 AWG	3/8" (10 mm)	0.247" (6,3 mm)	1.940" (49,3 mm)	0.750" (19,1 mm)	0.590" (15,1 mm)	0.890" (22,6 mm)	0.375" (9,5 mm)	50 each
30022	12477	Brown	2 AWG	1/4" (6 mm)	0.307" (7,8 mm)	1.970" (50,0 mm)	0.810" (20,7 mm)	0.630" (15,9 mm)	0.890" (22,6 mm)	0.375" (9,5 mm)	25 each
30023	12485	Brown	2 AWG	5/16" (8 mm)	0.307" (7,8 mm)	1.970" (50,0 mm)	0.810" (20,7 mm)	0.630" (15,9 mm)	0.890" (22,6 mm)	0.375" (9,5 mm)	25 each
30024	12493	Brown	2 AWG	3/8" (10 mm)	0.307" (7,8 mm)	1.970" (50,0 mm)	0.810" (20,7 mm)	0.630" (15,9 mm)	0.890" (22,6 mm)	0.375" (9,5 mm)	25 each
30027	12501	Green	1 AWG	5/16" (8 mm)	0.358" (9,1 mm)	1.970" (50,0 mm)	0.810" (20,7 mm)	0.690" (17,4 mm)	0.750" (19,1 mm)	0.375" (9,5 mm)	10 each
30028	12519	Green	1 AWG	3/8" (10 mm)	0.358" (9,1 mm)	1.970" (50,0 mm)	0.810" (20,7 mm)	0.690" (17,4 mm)	0.750" (19,1 mm)	0.375" (9,5 mm)	10 each
30031	12527	Pink	1/0 AWG	5/16" (8 mm)	0.394" (10,0 mm)	2.160" (54,8 mm)	0.810" (20,7 mm)	0.750" (19,0 mm)	0.890" (22,6 mm)	0.375" (9,5 mm)	10 each
30032	12535	Pink	1/0 AWG	3/8" (10 mm)	0.394" (10,0 mm)	2.160" (54,8 mm)	0.810" (20,7 mm)	0.750" (19,0 mm)	0.890" (22,6 mm)	0.375" (9,5 mm)	10 each
30036	12543	Black	2/0 AWG	3/8" (10 mm)	0.439" (11,2 mm)	2.370" (60,2 mm)	0.870" (22,2 mm)	0.810" (20,7 mm)	1.110" (28,2 mm)	0.375" (9,5 mm)	10 each
30041	12568	Orange	3/0 AWG	1/2" (12 mm)	0.490" (12,4 mm)	2.630" (66,8 mm)	0.940" (23,8 mm)	0.910" (23,0 mm)	1.110" (28,2 mm)	0.531" (13,5 mm)	10 each
30045	12584	Purple	4/0 AWG	1/2" (12 mm)	0.548" (13,9 mm)	2.600" (65,9 mm)	0.970" (24,6 mm)	1.000" (25,4 mm)	1.110" (28,2 mm)	0.531" (13,5 mm)	10 each

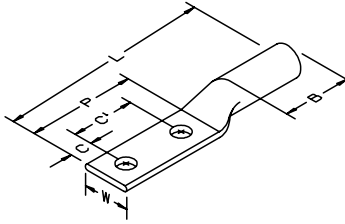


Specifications and Ordering Information for 3M™ Scotchlok™ Copper Lugs 31000 Series-One Hole, Long-Barrel up to 35 kV

Product Number	UPC (054007-)	Color Code	Wire Size	Stud Size	I.D.	Dimensions					Minimum Order Case Qty.
						L	B	W	P	C	
31036	12550	Black	2/0 AWG	3/8" (10 mm)	0.439" (10 mm)	2.840" (11,2 mm)	1.440" (36,6 mm)	0.812" (36,5 mm)	0.890" (20,6 mm)	0.375" (22,6 mm)	10 each
31041	12576	Orange	3/0 AWG	1/2" (12 mm)	0.490" (12,4 mm)	3.130" (79,5 mm)	1.440" (36,6 mm)	0.910" (23,0 mm)	1.110" (28,2 mm)	0.531" (13,5 mm)	10 each
31045	12592	Purple	4/0 AWG	1/2" (12 mm)	0.548" (13,9 mm)	3.320" (84,4mm)	1.560" (39,7 mm)	1.000" (25,4 mm)	1.110" (28,2 mm)	0.531" (13,5 mm)	10 each
31049	12618	Yellow	250 kcmil	1/2" (12 mm)	0.590" (15,1 mm)	3.380" (85,8 mm)	1.500" (38,0 mm)	1.130" (28,6 mm)	1.110" (28,2 mm)	0.531" (13,5 mm)	10 each
31053	12634	White	300 kcmil (150 mm ²)	1/2" (12 mm)	0.650" (16,5 mm)	3.780" (96,0 mm)	1.940" (49,2 mm)	1.220" (30,9 mm)	1.110" (28,2 mm)	0.531" (13,5 mm)	10 each
31056	12659	Red	350 kcmil	1/2" (12 mm)	0.700" (17,8 mm)	3.840" (97,5 mm)	1.940" (49,2 mm)	1.270" (32,3 mm)	1.110" (28,2 mm)	0.531" (13,5 mm)	10 each
31060	11978	Blue	400 kcmil	1/2" (12 mm)	0.762" (19,3 mm)	4.160" (105,7 mm)	2.000" (50,8 mm)	1.410" (35,8 mm)	1.340" (34,2 mm)	0.650" (16,66 mm)	10 each
31066	12675	Brown	500 kcmil	1/2" (12 mm)	0.836" (21,2 mm)	4.500" (114,3 m)	2.190" (55,6 mm)	1.530" (38,9 mm)	1.340" (34,2 mm)	0.660" (16,8 mm)	10 each
31067	12683	Brown	500 kcmil	5/8" (16 mm)	0.836" (21,2 mm)	4.500" (114,3 mm)	2.190" (55,6 mm)	1.530" (38,9 mm)	1.340" (34,2 mm)	0.660" (16,8 mm)	10 each
31068	11980	Green	600 kcmil	1/2" (12 mm)	0.920" (23,4 mm)	5.120" (130,0 mm)	2.690" (68,2 mm)	1.690" (42,9 mm)	1.750" (44,4 mm)	0.870" (22,2 mm)	6 each

A secure and easy connection

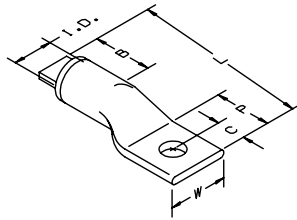




Specifications and Ordering Information for 3M™ Scotchlok™ Copper Lugs 31000 Series-Two Hole, Long-Barrel up to 35 kV

Product Number	UPC (054007-)	Color Code	Wire Size	Stud Size	Dimensions							Minimum Order Case Qty.
					I.D.	L	B	W	P	C	C1	
31122	52496	Gray	4 AWG	1/2" (12 mm)	.25" (6,27 mm)	4.19" (106,50 mm)	.93" (23,5 mm)	.66" (16,70 mm)	3.0" (76,2 mm)	.63" (16,0 mm)	1.75" (44,5 mm)	25 each
31125	52497	Brown	2 AWG	1/2" (12 mm)	.31" (7,8 mm)	4.85" (123,2 mm)	1.25" (31,8 mm)	.63" (16,0 mm)	3.0" (76,2 mm)	.63" (16,0 mm)	1.75" (44,5 mm)	25 each
31129	52498	Green	1 AWG	1/2" (12 mm)	.36" (9,1 mm)	4.85" (123,2 mm)	1.25" (31,8 mm)	.69" (17,5 mm)	3.0" (76,2 mm)	.63" (16,0 mm)	1.75" (44,5 mm)	10 each
31130	52499	Pink	1/0 AWG	1/2" (12 mm)	.39" (9,9 mm)	4.98" (126,5 mm)	1.38" (31,5 mm)	.75" (19,0 mm)	3.0" (76,2 mm)	.63" (16,0 mm)	1.75" (44,5 mm)	10 each
31137	69245	Black	2/0 AWG	1/2" (12 mm)	.44" (11,2 mm)	5.03" (127,8 mm)	1.50" (38,1 mm)	.81" (20,7 mm)	3.0" (76,2 mm)	.63" (16,0 mm)	1.75" (44,5 mm)	10 each
31141	69246	Orange	3/0 AWG	1/2" (12 mm)	.49" (12,4 mm)	5.13" (130,3 mm)	1.44" (36,5 mm)	.91" (23,0 mm)	3.0" (76,2 mm)	.63" (16,0 mm)	1.75" (44,5 mm)	10 each
31145	12600	Purple	4/0 AWG	1/2" (12 mm)	0.548" (13,9 mm)	5.160" (131,0 mm)	1.560" (39,6 mm)	1.000" (25,4 mm)	3.0" (76,2 mm)	.63" (16,0 mm)	1.75" (44,5 mm)	10 each
31149	12626	Yellow	250 kcmil	1/2" (12 mm)	0.595" (15,1 mm)	5.310" (134,9 mm)	1.560" (39,6 mm)	1.130" (28,6 mm)	3.0" (76,2 mm)	.63" (16,0 mm)	1.75" (44,5 mm)	10 each
31153	12642	White	300 kcmil (150 mm²)	1/2" (12 mm)	0.650" (16,5 mm)	5.750" (146,0 mm)	1.940" (49,2 mm)	1.220" (31,0 mm)	3.0" (76,2 mm)	.63" (16,0 mm)	1.75" (44,5 mm)	10 each
31156	12667	Red	350 kcmil	1/2" (12 mm)	0.700" (17,8 mm)	5.750" (146,0 mm)	1.940" (49,2 mm)	1.310" (33,4 mm)	3.0" (76,2 mm)	.63" (16,0 mm)	1.75" (44,5 mm)	10 each
31160	11979	Blue	400 kcmil	1/2" (12 mm)	0.762" (19,35 mm)	6.000" (152,4 mm)	2.120" (53,8 mm)	1.410" (35,8 mm)	3.090" (78,5 mm)	.62" (16,0 mm)	1.75" (44,5 mm)	10 each
31166	12691	Brown	500 kcmil	1/2" (12 mm)	0.836" (21,2 mm)	6.160" (156,4 mm)	2.190" (55,6 mm)	1.530" (38,9 mm)	3.0" (76,2 mm)	.63" (16,0 mm)	1.75" (44,5 mm)	10 each
31168	11981	Green	600 kcmil	1/2" (12 mm)	0.923" (23,44 mm)	6.720" (170,6 mm)	2.620" (66,5 mm)	1.690" (42,9 mm)	3.120" (79,2 mm)	.62" (16,0 mm)	1.75" (44,5 mm)	6 each
31172	12709	Black	750 kcmil	1/2" (12 mm)	1.031" (26,2 mm)	7.000" (177,8 mm)	2.810" (71,5 mm)	1.720" (43,7 mm)	3.0" (76,2 mm)	.63" (16,0 mm)	1.75" (44,5 mm)	6 each
31178	00907	—	1000 kcmil (500 mm²)	1/2" (12 mm)	1.173" (29,3 mm)	7.280" (184,9 mm)	2.940" (74,6 mm)	1.720" (43,7 mm)	3.0" (76,2 mm)	.63" (16,0 mm)	1.75" (44,5 mm)	6 each

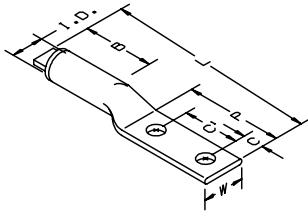
Copper/Aluminum Lugs



Specifications and Ordering Information for 3M™ Scotchlok™ Copper/Aluminum Lugs 40000 Series-One Hole (AL9CU) up to 35 kV

Product Number	UPC (054007-)	Color Code	Wire Size	Stud Size	I.D.	Dimensions					Minimum Order Case Qty.
						L	B	W	P	C	
40016	13400	Gray	6 AWG	5/16" (8 mm)	0.200" (5,1 mm)	2.300" (58,4 mm)	1.000" (25,4 mm)	0.550" (14,0 mm)	0.880" (22,3 mm)	0.440" (11,2 mm)	50 each
40020	13418	Green	4 AWG	5/16" (8 mm)	0.265" (6,7 mm)	2.300" (58,4 mm)	1.000" (25,4 mm)	0.690" (17,5 mm)	1.000" (25,4 mm)	0.440" (11,2 mm)	50 each
40024	13426	Pink	2 AWG	3/8" (10 mm)	0.307" (7,8 mm)	2.500" (63,5 mm)	1.000" (25,4 mm)	0.810" (20,6 mm)	1.120" (28,4 mm)	0.440" (11,2 mm)	25 each
40025	13434	Pink	2 AWG	1/2" (12 mm)	0.307" (7,8 mm)	2.500" (63,5 mm)	1.000" (25,4 mm)	0.810" (20,6 mm)	1.120" (28,4 mm)	0.440" (11,2 mm)	25 each
40028	13442	Gold	1 AWG	3/8" (10 mm)	0.350" (8,9 mm)	2.560" (65,0 mm)	0.940" (23,9 mm)	0.750" (19,1 mm)	1.120" (28,4 mm)	0.440" (11,2 mm)	10 each
40029	13459	Gold	1 AWG	1/2" (12 mm)	0.350" (8,9 mm)	2.560" (65,0 mm)	0.940" (23,9 mm)	0.750" (19,1 mm)	1.120" (28,4 mm)	0.440" (11,2 mm)	10 each
40032	13467	Tan	1/0 AWG	3/8" (10 mm)	0.414" (10,5 mm)	3.190" (81,0 mm)	1.250" (31,8 mm)	0.880" (22,4 mm)	1.250" (31,8 mm)	0.620" (15,7 mm)	10 each
40033	13475	Tan	1/0 AWG	1/2" (12 mm)	0.414" (10,5 mm)	3.190" (81,0 mm)	1.250" (31,8 mm)	0.880" (22,4 mm)	1.250" (31,8 mm)	0.620" (15,7 mm)	10 each
40037	13483	Olive	2/0 AWG	1/2" (12 mm)	0.439" (11,2 mm)	3.190" (81,0 mm)	1.380" (35,1 mm)	0.940" (23,9 mm)	1.250" (31,8 mm)	0.620" (15,7 mm)	10 each
40041	13491	Ruby	3/0 AWG	1/2" (12 mm)	0.484" (12,3 mm)	3.440" (87,4 mm)	1.500" (38,1 mm)	1.060" (26,9 mm)	1.310" (33,5 mm)	0.620" (15,7 mm)	10 each
40045	13509	White	4/0 AWG	1/2" (12 mm)	0.562" (14,3 mm)	3.560" (90,4 mm)	1.500" (38,1 mm)	1.190" (30,2 mm)	1.310" (33,5 mm)	0.620" (15,7 mm)	10 each
40046	13517	White	4/0 AWG	5/8" (16 mm)	0.562" (14,3 mm)	3.560" (90,4 mm)	1.500" (38,1 mm)	1.190" (30,2 mm)	1.310" (33,5 mm)	0.620" (15,7 mm)	10 each
40049	13525	Red	250 kcmil	1/2" (12 mm)	0.594" (15,1 mm)	3.620" (91,9 mm)	1.620" (41,1 mm)	1.250" (31,8 mm)	1.310" (33,5 mm)	0.620" (15,7 mm)	10 each
40050	13533	Red	250 kcmil	5/8" (16 mm)	0.594" (15,1 mm)	3.620" (91,9 mm)	1.620" (41,1 mm)	1.250" (31,8 mm)	1.310" (33,5 mm)	0.620" (15,7 mm)	10 each
40053	13541	Dark Blue	300 kcmil (150 mm ²)	1/2" (12 mm)	0.650" (16,5 mm)	4.000" (101,6 mm)	2.250" (57,2 mm)	1.380" (35,0 mm)	1.310" (33,5 mm)	0.620" (15,7 mm)	10 each
40056	13558	Brown	350 kcmil	1/2" (12 mm)	0.720" (18,3 mm)	4.250" (108,0 mm)	2.250" (57,2 mm)	1.500" (38,1 mm)	1.310" (33,5 mm)	0.620" (15,7 mm)	10 each
40057	13566	Brown	350 kcmil	5/8" (16 mm)	0.720" (18,3 mm)	4.250" (108,0 mm)	2.250" (57,2 mm)	1.500" (38,1 mm)	1.310" (33,5 mm)	0.620" (15,7 mm)	10 each
40067	13574	Pink	500 kcmil	5/8" (16 mm)	0.843" (21,4 mm)	5.440" (138,2 mm)	3.000" (76,2 mm)	1.750" (44,5 mm)	1.500" (38,1 mm)	0.620" (15,7 mm)	10 each
40073	13582	Yellow	750 kcmil	5/8" (16 mm)	1.031" (26,2 mm)	6.500" (165,1 mm)	3.380" (85,9 mm)	1.750" (44,5 mm)	1.870" (47,5 mm)	0.875" (22,2 mm)	6 each
40079	13590	Brown	1000 kcmil (500 mm ²)	5/8" (16 mm)	1.193" (30,3 mm)	7.870" (200,0 mm)	4.620" (117,3 mm)	2.560" (65,0 mm)	1.870" (47,5 mm)	0.875" (22,2 mm)	6 each

PRODUCT REFERRAL GENERATOR



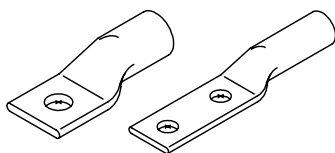
Terminatingpg. 272
 – QT-III 7600 Series
 Motor Leadpg. 377
 – 5300 Series



Specifications and Ordering Information for 3M™ Scotchlok™ Copper/Aluminum Lugs 40000 Series-Two Hole (AL9CU) up to 35 kV

Product Number	UPC (054007-)	Color Code	Wire Size	Stud Size	Dimensions							Minimum Order Case Qty.
					I.D.	L	B	W	P	C	C1	
40132	13608	Tan	1/0 AWG	3/8" (10 mm)	0.414" (10,5 mm)	5.28" (134,1 mm)	1.500" (38,1 mm)	0.880" (22,4 mm)	3.250" (82,6 mm)	0.620" (15,7 mm)	1.750" (44,4 mm)	10 each
40137	13616	Olive	2/0 AWG	1/2" (12 mm)	0.439" (11,2 mm)	5.500" (139,7 mm)	1.500" (38,1 mm)	0.940" (23,9 mm)	3.250" (82,6 mm)	0.620" (15,7 mm)	1.750" (44,4 mm)	10 each
40141	13624	Ruby	3/0 AWG	1/2" (12 mm)	0.484" (12,3 mm)	5.500" (139,7 mm)	1.500" (38,1 mm)	1.060" (26,9 mm)	3.250" (82,6 mm)	0.620" (15,7 mm)	1.750" (44,4 mm)	10 each
40145	13632	White	4/0 AWG	1/2" (12 mm)	0.562" (14,3 mm)	5.940" (150,9 mm)	1.750" (44,5 mm)	1.190" (30,2 mm)	3.380" (85,9 mm)	0.620" (15,7 mm)	1.750" (44,4 mm)	10 each
40149	13640	Red	250 kcmil	1/2" (12 mm)	0.594" (15,1 mm)	6.000" (152,4 mm)	1.750" (44,5 mm)	1.250" (31,8 mm)	3.380" (85,9 mm)	0.620" (15,7 mm)	1.750" (44,4 mm)	10 each
40153	13657	Dark Blue	300 kcmil (150 mm ²)	1/2" (12 mm)	0.650" (16,5 mm)	6.560" (166,6 mm)	2.250" (57,2 mm)	1.310" (33,3 mm)	3.560" (90,4 mm)	0.620" (15,7 mm)	1.750" (44,4 mm)	10 each
40156	13665	Brown	350 kcmil	1/2" (12 mm)	0.720" (18,3 mm)	6.560" (166,6 mm)	2.250" (57,2 mm)	1.500" (38,1 mm)	3.560" (90,4 mm)	0.620" (15,7 mm)	1.750" (44,4 mm)	10 each
40160	13673	Green	400 kcmil	1/2" (12 mm)	0.760" (19,3 mm)	6.880" (174,8 mm)	2.500" (63,5 mm)	1.620" (41,1 mm)	3.560" (90,4 mm)	0.620" (15,7 mm)	1.750" (44,4 mm)	10 each
40166	13681	Pink	500 kcmil	1/2" (12 mm)	0.843" (21,4 mm)	7.310" (185,7 mm)	3.000" (76,2 mm)	1.750" (44,5 mm)	3.560" (90,4 mm)	0.620" (15,7 mm)	1.750" (44,4 mm)	10 each
40170	13699	Black	600 kcmil	1/2" (12 mm)	0.923" (23,4 mm)	7.500" (190,5 mm)	3.000" (76,2 mm)	1.750" (44,5 mm)	3.620" (91,9 mm)	0.620" (15,7 mm)	1.750" (44,4 mm)	6 each
40172	13707	Yellow	750 kcmil	1/2" (12 mm)	1.031" (26,2 mm)	8.250" (209,6 mm)	3.380" (85,9 mm)	1.750" (44,5 mm)	3.620" (91,9 mm)	0.620" (15,7 mm)	1.750" (44,4 mm)	6 each
40178	13715	Brown	1000 kcmil (500 mm ²)	1/2" (12 mm)	1.193" (30,3 mm)	9.620" (244,3 mm)	4.620" (117,4 mm)	2.560" (65,0 mm)	3.620" (91,9 mm)	0.620" (15,7 mm)	1.750" (44,4 mm)	6 each

Oil Seal Lugs



PRODUCT REFERRAL GENERATOR

Terminatingpg. 289
 – 5800-Pb Series

Specifications and Ordering Information for 3M™ Oil Seal Lugs up to 35 kV

Product Number	Description	UPC (054007-)	Stud Size	Conductor Range		Solid	Inner Unit Pack	Minimum Order Case Qty.
				Stranded	I.D.			
OS-0001	One hole	50438	3/8"	2	0.307"	1	1	10 each
OS-0010	One hole	50439	3/8"	1/0	0.414"	2/0	1	10 each
OS-0020	One hole	50440	3/8"	2/0	0.439"	3/0	1	10 each
OS-0030	One hole	50441	1/2"	3/0	0.490"	4/0	1	10 each
OS-0040	One hole	50442	1/2"	4/0	0.548"	250	1	10 each
OS-0250	Two holes	50443	1/2"	250	0.595"	—	2	10 each
OS-0350	Two holes	50444	1/2"	350	0.700"	—	2	10 each
OS-0500	Two holes	50445	1/2"	500	0.886"	—	2	10 each
OS-0750	Two holes	50446	1/2"	750	1.031"	—	—	3 each
OS-1000	Two holes	50447	1/2"	1000	1.173"	—	—	3 each

Note: 3M oil seal lugs are copper lugs specially made for use with the 5800-Pb series cold shrink termination kits and on copper conductors.

SC Series Stem Connectors



PRODUCT REFERRAL GENERATOR

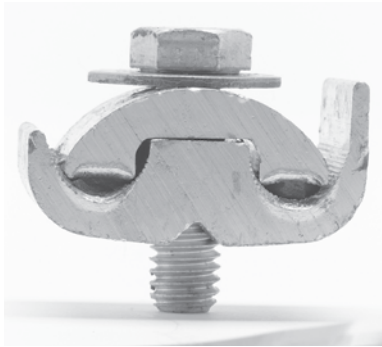
Terminatingpg. 272
 – 7600 Series
 – 5600 Series

Specifications and Ordering Information for 3M™ Stem Connectors SC Series up to 35 kV

Product Number	Description	UPC (054007-)	Stem Diameter	Conductor AWG Size		Inner Unit Pack	Minimum Order Case Qty.
				Stranded	Solid		
SC0001	Size 2 & 1	14655	0.257"	2 & 1	1 & 1/0	1/box	10 each
SC0002	Size 2	14648	0.257"	4	2	1/box	10 each
SC0010	Size 1/0	14663	0.257"	1/0	2/0	1/box	10 each
SC0020	Size 2/0	14671	0.325"	2/0	3/0	1/box	10 each
SC0030	Size 3/0	14689	0.325"	3/0	4/0	1/box	10 each
SC0040	Size 4/0	14697	0.325"	4/0	—	1/box	10 each

Note: The 3M SC series stem connectors can be used with 3M cold shrink terminations. The stem connectors have copper stems, aluminum barrels with antioxidant paste and are used for copper or aluminum conductors.

CP Parallel Clamp



PRODUCT REFERRAL GENERATOR

Connectingpg. 157
– Stem Connectors SC Series

Specifications and Ordering Information for 3M™ Parallel Clamp CP-1 up to 35 kV

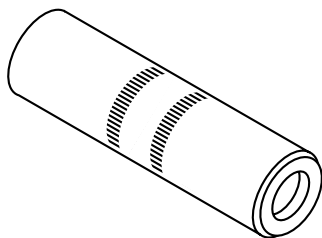
Product Number	UPC (054007-)	Conductor Size	Minimum Order Case Qty.
CP-1	12204	6 Solid-2/0 Stranded (14-60 mm ²)	10 each

Note: The 3M CP-1 parallel clamp is used in aerial connections with the SC series stem connectors.

Guide to Connectors by Product Number Suffixes for Terminations and Splices

Suffix	Product Number	Description
-2	SC0001	Stem Connector
-22	SC0002	Stem Connector
-1/0	SC0010	Stem Connector
-2/0	SC0020	Stem Connector
-3/0	SC0030	Stem Connector
-4/0	SC0040	Stem Connector
-350 AL	20011	(CU/AL) Connector
-350 CU	10011 or 11011	(CU) Connector
-500 AL	20014	(CU/AL) Connector
-500 CU	10014 or 11014	(CU) Connector
-750 AL	20019	(CU/AL) Connector
-750 CU	10019 or 11019	(CU) Connector
-1000 AL	20024	(CU/AL) Connector
-1000 CU	10024 or 11024	(CU) Connector

CI Series Connectors



PRODUCT REFERRAL GENERATOR

Splicingpg. 342

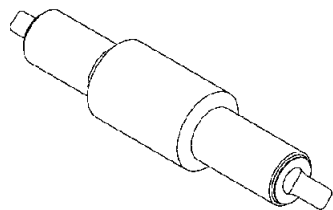
- 5400 Series
- 5420 Series
- QS-II Splices

Specifications and Ordering Information for 3M™ Aluminum Connectors CI Series up to 35 kV

Product Number	Description	UPC (054007-)	Conductor Size Cu or Al		Length	Conductor O.D.	Minimum Order Case Qty.
			Stranded	Solid			
CI-22	Used with molded rubber splices 15 kV	25636	4 AWG	2 AWG	2.0	0.63" (16 mm)	10 each
CI-2	Used with molded rubber splices 15 kV	11651	2 AWG	1 AWG	2.0	0.63" (16 mm)	10 each
CI-21	Used with molded rubber splices 15 kV	11856	2, 1 AWG	1, 1/0 AWG	2.0	0.63" (16 mm)	10 each
CI-21-840	Used with molded rubber splices 25 kV	09136	2, 1 AWG	1, 1/0 AWG	3.0	0.90" (22 mm)	10 each
CI-1/0	Used with molded rubber splices 15 kV	11867	1/0 AWG	—	2.0	0.63" (16 mm)	10 each
CI-1/0-840	Used with molded rubber splices 25 kV	09137	1/0 AWG	—	3.0	0.90" (22 mm)	10 each
CI-2/0	Used with molded rubber splices 15 kV and 25 kV	11875	2/0 AWG	—	3.0	0.91" (23 mm)	10 each
CI-3/0	Used with molded rubber splices 15 kV and 25 kV	11883	3/0 AWG	—	3.0	0.90" (22 mm)	10 each
CI-4/0	Used with molded rubber splices 15 kV and 25 kV	11891	4/0 AWG	—	3.0	0.90" (22 mm)	10 each
CI-250	Used with molded rubber splices 15 kV and 25 kV	11909	250 kcmil	—	3.75	1.11" (28 mm)	10 each
CI-350	Used with molded rubber splices 15 kV and 25 kV	11925	350 kcmil	—	3.70	1.11" (28 mm)	10 each
CI-450	Used with molded rubber splices 15 kV and 25 kV	11933	500 kcmil Compact	—	4.25	1.3" (33 mm)	10 each
CI-500	Used with molded rubber splices 15 kV and 25 kV	25644	500 kcmil	—	4.25	1.3" (33 mm)	10 each
CI-650	Used with molded rubber splices 15 kV and 25 kV	11941	750 kcmil Compact	—	4.66	1.7" (43 mm)	10 each
CI-750	Used with molded rubber splices 15 kV and 25 kV	25651	750 kcmil	—	4.66	1.57" (40 mm)	10 each

Note: These 3M CI series connectors are for use with molded rubber splices and have a solid center stop.

CI-A Series Connectors



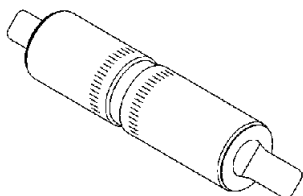
PRODUCT REFERRAL GENERATOR

Splicing	pg. 301
– 5420 Series.....	pg. 356
– 5432 Series.....	pg. 365
– 5450 Series.....	pg. 356
– 5461 Series.....	pg. 365

Specifications and Ordering Information for 3M™ Aluminum Connectors CI-A Series up to 35 kV

Product Number	Description	UPC (054007-)	Conductor Size Cu or Al		Conductor O.D.	Minimum Order Case Qty.
			Stranded	Solid		
CI-1/0A	Used with molded rubber splices 3M 5420 Series, 5461 splice kit and 5450 Series	14176	1/0 AWG	—	0.91" (23 mm)	10 each
CI-1A	Used with molded rubber splices 3M 5420 Series, 5461 splice kit and 5450 Series	00722	1 AWG	1/0 AWG	0.91" (23 mm)	10 each
CI-2A	Used with molded rubber splices 3M 5420 Series, 5461 splice kit and 5450 Series	00721	2 AWG	1 AWG	0.91" (23 mm)	10 each
CI-22A	Used with molded rubber splices 3M 5420 and 3M 5450 Series	15868	—	2 AWG	0.91" (23 mm)	10 each

CI-T Series Connectors



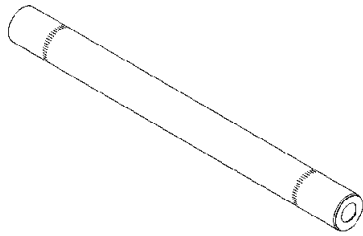
PRODUCT REFERRAL GENERATOR

Splicing	pg. 342
– 5411 Series	
– QS-II	

Specifications and Ordering Information for 3M™ Aluminum Transition Connectors CI-T Series up to 35 kV

Product Number	Description	UPC (054007-)	Conductor Size Cu or Al				Conductor O.D.	Minimum Order Case Qty.
			From Cable A		From Cable B			
			Stranded	Solid	Stranded	Solid		
CI-T-1	Transition connector used with 3M 5411 and 3M 5501 splice kits	11958	4	2	1	1/0	0.63" (16 mm)	10 each
CI-T-2	Transition connector used with 3M 5411 and 3M 5501 splice kits	11966	2	1	1	1/0	0.63" (16 mm)	10 each
CI-T-3	Transition connector used with 3M 5411 and 3M 5501 splice kits	11974	4	2	1/0	—	0.63" (16 mm)	10 each
CI-T-4	Transition connector used with 3M 5411 and 3M 5501 splice kits	11982	2	1	1/0	—	0.63" (16 mm)	10 each
CI-T-5	Transition connector used with 3M 5411 and 3M 5501 splice kits	11990	2	1	4	2	0.63" (16 mm)	10 each
CI-T-9	Transition connector used with 3M 5411 and 3M 5500 splice kits	44533	1	1/0	1/0	—	0.63" (16 mm)	10 each

CIR Series Connectors



PRODUCT REFERRAL GENERATOR

Splicingpg. 342
 – 5411R Series
 – 5412R Series
 – 5451R Series

Specifications and Ordering Information for 3M™ Aluminum Connectors CIR Series

Product Number	Description	UPC (054007-)	Conductor Size Cu or Al		Conductor O.D.	Splice Body	Minimum Order Case Qty.
			Stranded	Solid			
CIR-1/0	Used with molded rubber splice kit	09358	1/0 AWG	—	0.63" (16 mm)	5411R	10 each
CIR-1/0-840	Used with molded rubber splice kit	09137	1/0 AWG	—	0.91" (23 mm)	5451R	10 each
CIR-21	Used with molded rubber splice kit	09357	2, 1 AWG	1, 1/0 AWG	0.63" (16 mm)	5411R	10 each
CIR-21-840	Used with molded rubber splice kit	09136	2, 1 AWG	1, 1/0 AWG	0.91" (23 mm)	5451R	10 each
CIR-22	Used with molded rubber splice kit	09356	4 AWG (220 insul. only)	2 AWG	0.63" (16 mm)	5411R	10 each
CIR-1/0A	Used with molded rubber splice kit	50226	1/0 AWG	—	0.91" (23 mm)	5451R	10 each
CIR-2/0	Used with molded rubber splice kit	41964	2/0 AWG (220 mil only)	—	0.91" (23 mm)	5412R	10 each
CIR-3/0	Used with molded rubber splice kit	41965	3/0 AWG	—	0.91" (23 mm)	5412R	10 each
CIR-4/0	Used with molded rubber splice kit	50228	4/0 AWG	—	0.91" (23 mm)	5412R	10 each
CIR-21A	Used with molded rubber splice kit	50227	2, 1 AWG	1, 1/0 AWG	0.91" (23 mm)	5451R	10 each

Note: These extra-long connectors are used to bridge gaps up to 6 inches when a piece of damaged cable is removed. They can be used with copper or aluminum conductors.

2000T Series Connectors

3M™ Scotchlok™ Reducer Series Connectors 2000T-CU/AL up to 35 kV

The 3M Scotchlok Reducer Series Connectors 2000T-CU/AL are aluminum inline sleeves that are applicable for both aluminum and copper conductors and are specifically designed for use with PILC power cable. The barrel diameters on each end are different, to allow connecting conductors of different size. They can be used on concentric, compressed and compact stranded conductors. When used with sector shaped conductors, a rounding die is recommended to round out the sector shape. The 2000T Reducer Series connectors, like all 2000T series connectors are designed for use with 3M splice kits, CS500 Series, Scotchlok 2000T Series, Scotchlok 2000-3T Series and 5700 Series splice kits. These connectors have a solid center oil stop and meet ANSI Standard C-119.4.



Specifications and Ordering Information for 3M Scotchlok Reducer Series Connectors 2000T-CU/AL

Product Number	UPC (054007-)	O.D.*	Length	Minimum Order Case Qty.
2000T 2-1/0 CU/AL	42226	0.640"	4.740"	9 connectors
2000T 1/0-2/0 CU/AL	42228	0.910"	4.700"	3 connectors
2000T 2/0-4/0 CU/AL	42229	0.910"	4.700"	3 connectors
2000T 4/0-350 CU/AL	42231	1.125"	4.700"	3 connectors
2000T 250-350 CU/AL	42232	1.125"	4.690"	3 connectors
2000T 350-500 CU/AL	42234	1.320"	4.700"	3 connectors
2000T 500-750 CU/AL	42236	1.600"	6.250"	3 connectors
2000T 500-1000 CU/AL	42238	1.625"	6.250"	3 connectors
2000T 750-1000 CU/AL	42243	1.625"	6.250"	3 connectors

* No quantity of this connector size is maintained. Connector is available with 12 week lead time. Connectors for cable sizes not listed are available with approval. Contact your Customer Service Representative for ordering information: 1-800-245-3573.

PRODUCT REFERRAL GENERATOR

Splicingpg. 371
 – CS 500Pb Series
 – QS 2000T Series
 – QS 2000-3T Series

3M™ Scotchlok™ Connectors 2000T-CU Series up to 35 kV

The 3M Scotchlok Series Connectors 2000T-CU Series are copper inline sleeves for use with copper conductor cables of the same size and are specifically designed for use with PILC power cable. They can be used to connect copper cable only. They are designed with a solid center oil stop for use with CS500 Series splice kits, Scotchlok 2000T Series, Scotchlok 2000-3T Series and 5700 Series splice kits. They can be used on concentric, compressed and compact stranded conductors. When used with sector shaped conductors, a rounding die is recommended to round out the sector shape. These connectors meet ANSI Standard C-119.4. See page 371 for splice kit information.



Specifications and Ordering Information for 3M Scotchlok 2000T-CU Series up to 35 kV

Product Number	UPC (054007-)	O.D.	Length	Minimum Order Case Qty.
2000T - 2 CU	42247	0.700"	5.320"	9 connectors
2000T - 1/0 CU	42249	0.700"	5.320"	3 connectors
2000T - 2/0 CU	42250	0.700"	5.320"	3 connectors
2000T - 4/0 CU	42252	0.880"	5.250"	3 connectors
2000T - 250 CU	42253	0.880"	5.250"	3 connectors
2000T - 350 CU	42255	0.875"	5.250"	3 connectors
2000T - 400 CU	42256	1.125"	6.900"	3 connectors
2000T - 500 CU	42258	1.125"	6.900"	3 connectors
2000T - 750 CU	42263	1.299"	6.900"	3 connectors
2000T - 1000 CU	42265	1.500"	6.900"	3 connectors

