

NEBO®



NEBO®
Innovative Lighting

PROTEC™
Made Tough

NEBO®
Bright Ideas

2016

4 million plus flashlights sold per year. With over 30,000 retail customers, we get instant market feedback on up-take and trends giving us unparalleled insight leading to the competitive edge in development.

Innovation and retail price value. We bring cutting edge design with high lumen output to our line. Our established retails create a value proposition without jeopardising quality or product integrity.

International Patented technology. This secures our place in the market and brings protection to our customers and products from counterfeit threats.

Proven business model. Solid dependable capacity working with some of the largest factories in the Far East delivering the highest quality.

Top 5 Customers. Wal-Mart (30 yrs), Dicks Sporting Good (4 yrs), Academy Sports (3 yrs), Bass Pro Shops (6 yrs), Sears Holding Corp. (25 yrs)

Now available outside the USA. NEBO® is a division of Alliance Sports Group (ASG), with headquarters in Grand Prairie, TX, USA. True Brands Ltd is a UK based wholly owned subsidiary of ASG, handling the global distribution and selling of NEBO® products throughout the World.

As technology progresses, consumers are coming to expect better value for their money. There is a focus on reducing energy consumption and a heavier focus on "green" living overall. High Powered LED's, lens technology and rechargeable flashlights are all utilities that we have incorporated into our assortment, and we are always learning and discovering other innovative ways to better our value at consumer level.

NEBO® flashlights deliver optimum performance. Products are of the highest quality, innovatively designed, with added special features and patented technology. Eye-catching packaging, clever point of sale, and interactive TRY ME features set them apart from many of the more expensive, less innovative major brands and the many sub-standard low cost brands. In this way, we have carved out market positioning that has enabled the brand to continually increase market share and grow into one of the largest flashlight brands in the world.

Patents



A new innovation in LED technology. C•O•B features smaller, easier clustered LED chips that are mounted directly to the circuit board. These LED chips work together as one lighting module. Because of the compact design, C•O•B outperforms traditional lighting by up to 50 times the light output per centimeter of light surface.



Eliminating inconsistencies in light, the OC™ - Optimised Clarity Technology provides intense, clear, pristine light that is easy on the eyes.

This technology allows the light beam to be as bright on the edge as it is in the center when used in flood mode.



ARCUS™
Shaping light like never before. Arcus is a new proprietary COB LED technology that allows the shaping of light into full 3D patterns, giving optimal, bright, uniform light exactly where it's needed.



FLEX POWER™
The SEVEN-Z™ is fueled by FLEX-POWER™, technology that allows the flexibility to use different quantities of batteries to power the light. SEVEN-Z™ will function with 3 AA, 6 AA or with the optimal 9 AA batteries for full 770 lumens of power.



NEBO® is one of the world's best-selling lines of innovative, consumer-friendly flashlights and tools. Ever-changing and never compromising, we create and see our products through every phase of development. From the conceptual drawings on the sketch pad all the way to the end consumer, we offer quality and customer service guarantees that are unmatched.

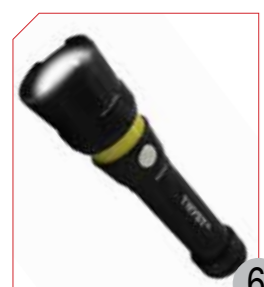
SOME OF OUR RETAILERS



We are excited to introduce to you our latest line-up of new and innovative lighting products with counter top displays.

All of these high quality practical LED lighting products come complete with their own cleverly created point of sale displays, intended to sit directly on the countertop, near the till point - taking up as little space as possible and offering a unique and impulsive 'TRY & BUY' shopping experience.

The displays are designed to help you to sell as much stock as possible by encouraging your customers to interact, discover, and be impressed by the quality and brightness of these innovative and exciting NEBO® lighting products.



6
TWYSTZ



8
CaseBrite
PHONE CASE + POWERFUL LIGHT



10
TWYST
SHAPING LIGHT LIKE NEVER BEFORE



11
SEVEN-Z



12
REDLINE
with MAGDOCK



14
LiL Larry
POWER POCKET LIGHT



16
BIG Larry
POWER WORK LIGHT



18
WORKBRITE



19
THE RECHARGEABLE WORKBRITE



20
SLIDE



21
SLIDE



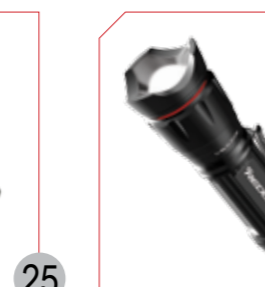
22
the Larry



23
Larry



24
TRANSPORT



25
LUMO



26
REDLINE

27
MICRO REDLINE

Bright Ideas 'language free' euro-hook packaging is presented in a fresh and eye catching striking green and white colourway standing out from the competition. The packs clearly show the product features through the use of internationally recognisable icons, enabling them to be sold Worldwide.

All Bright Ideas product packs include a "TRY ME" feature to encourage your customers to interact, discover, and be impressed by the quality and brightness of these innovative and exciting NEBO® lighting products.

Also, you will find a spare set of Duracells with products that need batteries to ensure your customers always have a fresh set.

The Bright Ideas range of innovative lighting products are well suited for retailers that sell from display hooks. Ideal for selling throughout the Outdoor, Camping, Travel, Auto, Garden, Home and Gift sectors.

TWYSTZ™	28
Slyde™	29
BIG Larry™	30
LiL Larry™	31
Larry C™	32
Rechargeable WORKBRITE 2	33
PAL™	34
LUMO™	35



iPROTEC™

MADE TOUGH

iPROTEC flashlights are practical, enjoyable to own, and far exceed expectations relative to their price. They are "MADE TOUGH", ensuring each of our flashlights are rugged and highly dependable whilst also being compact and easy to pack away. iPROTEC flashlights have lumen outputs that are equal to those of much more expensive products.

iPROTEC TWYST	36
PRO250LIGHT	37
PRODUALLIGHT SLYDE™	38
CHAMELEON™	39
PRO150LIGHT HEADLAMP	39
PRO280LIGHT	40
PRO180LIGHT	40
PRO220LIGHT	41
PRO100LIGHT	41



NEBO™ TWYST™Z

WORK LIGHT, LANTERN & FLASHLIGHT

Introducing the newest member of the TWYST™ lineup...TWYST™Z! The TWYST™Z features the same C•O•B lighting options as the original TWYST™: a high-power work light, lantern and flashlight! The TWYST™Z now features a 4x adjustable zoom. A powerful magnetic base also provides convenient hands-free lighting. TWYST™Z...shaping light like never before!

LIGHT

- 75 Lumen C•O•B LED Work Light
- 200 Lumen C•O•B LED Lantern
- 200 Lumen Flashlight

DESIGN

- 4x adjustable zoom
- Enhanced C•O•B LED Technology
- Fully dimmable beam
- Anodised aircraft-grade aluminum; water and impact-resistant
- Powerful magnetic base

OPERATION

- Side-positioned ON/OFF button

BATTERIES

- Powered by 4 AAA batteries (included)

SPECIFICATIONS

- Weight with batteries - 250g
- Length - 160 mm (Compacted) 170 mm (Extended)
- Diameter - 45 mm (Head) 25 mm (Barrel)



C•O•B (Chips on Board)

A new innovation in LED technology. C•O•B features smaller, easier clustered LED chips that are mounted directly to the circuit board. These LED chips work together as one lighting module. Because of the compact design, C•O•B outperforms traditional lighting by up to 50 times the light output per centimeter of light surface.



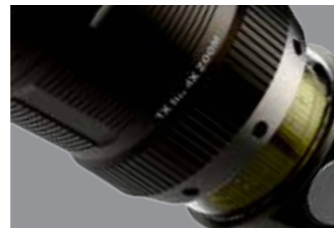
Twist to reveal C•O•B LED



WORK LIGHT, LANTERN & FLASHLIGHT



75 Lumen C•O•B Work Light



4x Adjustable Zoom



200 Lumen C•O•B Lantern



Powerful Magnetic Base

NEW



NEBO™ TWYST™Z

COUNTERTOP DISPLAY

Display

- Display holds 5 pieces - 1 'Try Me' and 4 in gift boxes; 11 additional pieces are included as replenishments.
- Each TWYST™Z comes with a gift box
- Display allows product to be easily tested by consumers

Display Dimensions

(H) 216mm x (W) 235mm x (D) 178mm

Gift Box Dimensions

(H) 165mm x (W) 476mm x (D) 476mm

THREE LIGHT MODES

MODE	HIGH:	LOW:	MODE	HIGH:	LOW:
WORK LIGHT - 120° Light Coverage	75 Lumens	10 Lumens	LANTERN - 360° Light Coverage	200 Lumens	20 Lumens
	• 10 Hours • 11 Meters	• 26 Hours • 4 Meters		<td>• 2 Hours • 13 Meters</td> <td>• 16 Hours • 4 Meters</td>	• 2 Hours • 13 Meters
FLASHLIGHT	200 Lumens	20 Lumens			
	• 2 Hours • 107 Meters	• 20 Hours • 34 Meters			



TRY ME
POS
STAND



CODE	DESCRIPTION	Display Pack
NE6372	TWYST-Z work Light, Lantern & Flashlight	16 Pieces

PHONE CASE WITH POWERFUL LIGHT

The NEBO® CaseBrite™ offers more than just protection for your mobile device. The CaseBrite™ features a high-power, 200-lumen C•O•B flashlight that is up to 1200% brighter than a standard smart phone light. Designed specifically to not draw from your phone's battery, each CaseBrite™ is independently powered by an internal, rechargeable lithium-ion battery.

LIGHT
 • High-power 200 lumen C•O•B LED

DESIGN
 • Impact-resistant, non-slip rubber case
 • Screen protection lip
 • Fully dimmable
 • Slim 15mm profile
 • Battery life indicator
 • Fits iPhone 6/6S & 6/6S Plus

OPERATION
 • Rear-positioned, ON/OFF button

ACCESSORIES
 • USB to Micro USB charging cable (included)

BATTERIES
 • Internal, rechargeable lithium-ion battery (Recharge time - up to 3 hours)

SPECIFICATIONS
 • 6/6S Length - 140 x Width - 70 x Depth - 16mm weight - 85g
 • 6/6S Plus Length - 160 x Width - 79 x Depth - 16mm weight - 103g



NEW



Easy Reach ON/OFF Button



USB to Micro USB Cable Included



Easy Access to Buttons & Ports



Battery Life Indicator



COUNTERTOP
DISPLAY

Display

- Display holds 6 pieces (three 6/6S; three 6/6S Plus) 2 additional pieces are stored underneath as replenishments.
- Each CaseBrite™ comes with a gift box and instruction manual

Display Dimensions
 (H) 318 x (W) 254 x (D) 235mm

Gift Box Dimensions (6/6S)
 (H) 171 x (W) 111 x (D) 25mm

Gift Box Dimensions (6/6S Plus)
 (H) 190 x (W) 111 x (D) 25mm



THREE LIGHT MODES

- | | | |
|--|--|---|
| HIGH:
200 Lumens
• 3 Hours
• 30 Meters | LOW:
20 Lumens
• 24 Hours | STROBE:
200 Lumens
• 7 Hours |
|--|--|---|



C•O•B (Chips on Board)

A new innovation in LED technology. C•O•B features smaller, easier clustered LED chips that are mounted directly to the circuit board. These LED chips work together as one lighting module. Because of the compact design, C•O•B outperforms traditional lighting by up to 50 times the light output per centimeter of light surface.

CODE	DESCRIPTION	Display Pack
NE6347	CaseBrite™ iPhone 6/6S Case + Light	4 Pieces
NE6348	CaseBrite™ iPhone 6/6S Plus Case + Light	4 Pieces

NEBO® TWYST™

SHAPING LIGHT LIKE NEVER BEFORE



WORK LIGHT, LANTERN & FLASHLIGHT

A light that does it all...with a TWYST™! The TWYST™ features a high-power work light, lantern and flashlight all in one! The TWYST™ uses a revolutionary new C•O•B LED technology that allows the shaping of light into full 3D patterns, giving optimal, bright, uniform light exactly where it's needed. Retractable base stabilisers are positioned at the bottom of the flashlight to give added stability on uneven surfaces. A powerful magnetic base also provides convenient hands-free lighting. TWYST™...shaping light like never before!

LIGHT

- 110 Lumen Work Light
- 250 Lumen Lantern
- 270 Lumen LED Flashlight

DESIGN

- Enhanced C•O•B LED Technology
- Fully dimmable beam
- Anodised aircraft-grade aluminium
- Water and impact-resistant
- Retractable base stabilisers
- Powerful magnetic base

OPERATION

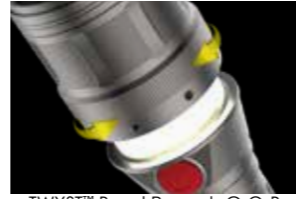
- Side-positioned ON/OFF button

BATTERIES

- Powered by 4 AA batteries (included)

SPECIFICATIONS

- Weight with batteries - 385g
- Length - 190 mm (Compacted) 200 mm (Extended)
- Diameter - 50 mm (Head) 31 mm (Barrel)



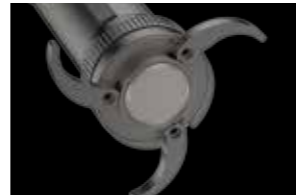
TWYST™ Bezel Reveals C-O-B



110 Lumen C-O-B Work Light



250 Lumen C-O-B Lantern



Powerful Magnetic Base and Retractable Base Stabilizers



OPTIMISED CLARITY

Eliminating inconsistencies in light, the OC™ - Optimised Clarity Technology provides intense, clear, pristine light that is easy on the eyes. This technology allows the light beam to be as bright on the edge as it is in the center when used in flood mode.



6x Adjustable Zoom



Anodised Aircraft-Grade Aluminum



Flex-Power™ 3, 6 or 9 AA Batteries



Glow-in-the-Dark ON/OFF Button



NEBO® SEVEN-Z™

770 LUMEN FLASHLIGHT

You asked; we delivered. The SEVEN-Z™ is the answer to the demands for a high-lumen flashlight...770 lumens to be exact! Featuring OC™ Technology and all-new, Flex-Power™ which allows the flashlight to be powered by 3, 6 or 9 AA batteries, depending on the user's preference.

LIGHT

- High-power 770 lumen LED flashlight

DESIGN

- Convex Lens
- Heat sink design
- 6x adjustable beam
- Anodised aircraft-grade aluminium
- Water and impact-resistant
- Flex-Power™

OPERATION

- Rear-positioned, glow-in-the-dark ON/OFF button

BATTERIES

- Powered by Flex-Power™: 3, 6 or 9 AA batteries (9 AA batteries included)

SPECIFICATIONS

- Weight with 9 batteries - 570g
- Weight with 6 batteries - 510g
- Weight with 3 batteries - 450g
- Length - 223 mm (Compacted) 244 mm (Extended)
- Diameter - 50 mm (Head) 38 mm (Barrel)

FLEX-POWER™

The SEVEN-Z™ is fueled by FLEX-POWER™, technology that allows the flexibility to use different quantities of batteries to power the light. SEVEN-Z™ will function with 3 AA, 6 AA or with the optimal 9 AA batteries for full 770 lumens of power.

TWO LIGHT MODES

HIGH: 110 Lumens	LOW: 10 Lumens
• 13.5 Hours	• 96 Hours
• 15 Meters	• 1.5 Meters

WORK LIGHT - 120° Light Coverage

HIGH: 250 Lumens	LOW: 25 Lumens
• 4 Hours	• 60 Hours
• 15 Meters	• 1.5 Meters

LANTERN - 360° Light Coverage

HIGH: 3400 LUX	LOW: 350 LUX
• 4 Hours	• 40 Hours
• 233 Meters	• 74 Meters

FLASHLIGHT

TWO LIGHT MODES

HIGH: 770 Lumens	LOW: 220 Lumens
6500 LUX	1600 LUX
• 7 Hours	• 25 Hours
• 322 Meters	• 160 Meters

9 AA BATTERIES

HIGH: 700 Lumens	LOW: 200 Lumens
5900 LUX	1450 LUX
• 4.5 Hours	• 23 Hours
• 307 Meters	• 152 Meters

6 AA BATTERIES

HIGH: 550 Lumens	LOW: 130 Lumens
4650 LUX	1150 LUX
• 2.5 Hours	• 13 Hours
• 273 Meters	• 136 Meters

3 AA BATTERIES



Display Dimensions
(H) 261 mm x (W) 234 mm x (D) 180 mm

Gift Tube Dimensions
(H) 203 mm x (W) 60 mm



CODE	DESCRIPTION	Display Pack
NE6296	TWYST work Light, Lantern & Flashlight	10 Pieces



Display Dimensions
(H) 244 mm x (W) 279 mm x (D) 95 mm

Gift Box Dimensions
(H) 60 mm x (W) 279 mm x (D) 95 mm



CODE	DESCRIPTION	Display Pack
NE6294	SEVEN-Z™ 770 Lumen Flashlight	6 Pieces

NEBO®
REDLINE® RC
with MAGDOCK

RECHARGEABLE FLASHLIGHT

The newest rechargeable REDLINE® is the REDLINE® RC™ with MagDock. The MagDock is a magnetic charging station that docks and charges your REDLINE®. Small enough to fit in the palm of your hand, the REDLINE® RC™ with MagDock is fully equipped with all of the features that make the REDLINE® series so popular.

LIGHT

- High-power 320 lumen LED

DESIGN

- 4x adjustable zoom
- Anodised aircraft-grade aluminum; water and impact-resistant
- OC™ Technology
- Convex lens
- Signature Red Ring™
- Steel belt/pocket clip
- Ergonomic non-slip grip
- Magnetic base
- Protective LED housing
- Charging indicator light

OPERATION

- Side-positioned, ON/OFF button

ACCESSORIES

- USB to Micro USB cable included
- Lanyard included

BATTERIES

- Internal, rechargeable lithium-ion battery (Recharge time - up to 2 hours)

SPECIFICATIONS

- Weight - 94g
- Length - 91 mm (Compacted) 98 mm (Extended)
- Diameter - 30 mm (Head) 27 mm (Barrel)



4x Adjustable Zoom



Lanyard Loop and Magnetic Base



USB to Micro USB Cable



MagDock Battery Indicator



NEW



NEBO®
REDLINE® RC
with MAGDOCK

**COUNTERTOP
DISPLAY**

Display

- Display holds 5 pieces - 1 'Try Me' and 4 in gift boxes; 5 additional pieces are included as replenishments.
- Each REDLINE® RC™ comes with a gift box.
- Product attaches securely to the display using the magnetic base

Display Dimensions

(H) 223 x (W) 140 x (D) 197mm

Gift Box Dimensions

(H) 107 x (W) 75 x (D) 60mm



FOUR LIGHT MODES

- | | | | |
|---|---|---|--|
| HIGH
320 Lumens
• 1 Hour
• 110 Meters | MEDIUM
125 Lumens
• 2 Hours
• 70 Meters | LOW
32 Lumens
• 9 Hours
• 35 Meters | STROBE
320 Lumens
• 2 Hours
• 110 Meters |
|---|---|---|--|



**TRY ME
POS
STAND**

CODE	DESCRIPTION	Display Pack
NE6392	REDLINE® RC™ with MagDock	10 Pieces

POWER C•O•B LED WORK LIGHT

The LiL Larry™ knows how to light up a room! Equipped with new C•O•B LED technology, the LiL Larry™ outputs 250 lumens of intense light. Secondary light modes include Low (95 lumens) and the Emergency Red Flash mode. This intense red light is perfect for distress signaling or roadside emergencies. The anodised aluminium body and recessed LED housing ensures that the LiL Larry™ can handle any situation. It's small size makes this flashlight extremely portable.

LIGHT

- High-power 250 lumen C•O•B LED work light
- Low-power 95 lumen C•O•B LED work light
- High-power C•O•B LED emergency red flasher

DESIGN

- Anodised aircraft-grade aluminium
- Water and impact-resistant
- Powerful magnetic base

OPERATION

- Top-positioned, ON/OFF button

BATTERIES

- Powered by 3 AAA batteries (included)

SPECIFICATIONS

- Weight with batteries - 89g
- Length - 151 mm
- Diameter - 20 mm (Head) 15 mm (Barrel)



C•O•B (Chips on Board)

A new innovation in LED technology. C•O•B features smaller, easier clustered LED chips that are mounted directly to the circuit board. These LED chips work together as one lighting module. Because of the compact design, C•O•B outperforms traditional lighting by up to 50 times the light output per centimeter of light surface.



Emergency Red Flasher



Anodised Aircraft-Grade Aluminum



Powerful Magnetic Base



Display

- Display holds 18 pieces (5 red, 5 silver, 8 black); 3 in front for consumer testing, 15 additional pieces stored in the back as replenishments
- Each LiL Larry™ comes with a gift box.
- Product attaches securely to the display using the magnetic base

Display Dimensions

(H) 250mm x (W) 140mm x (D) 190mm

Gift Box Dimensions

(H) 160mm x (W) 25mm x (D) 18mm



THREE LIGHT MODES

HIGH:

250 Lumens

- 3 Hours
- 25 Meters

LOW:

95 Lumens

- 10 Hours
- 16 Meters

RED FLASH:

- 10 Hours



CODE	DESCRIPTION	Display Pack
NE6373	LiL Larry™ Power C•O•B LED Work Light	18 Pieces

NEBO[®] the **BIG Larry** POWER WORK LIGHT

POWER C•O•B LED WORK LIGHT

The BIG Larry™ knows how to light up a room! Equipped with new C•O•B LED technology, the BIG Larry™ outputs 400 lumens of intense light. Secondary light modes include Low (160 lumens) and the Emergency Red Flash mode. This intense red light is perfect for distress signaling or roadside emergencies. The anodised aluminium body and recessed LED housing ensures that the BIG Larry™ can handle any situation.

LIGHT

- High-power 400 lumen C•O•B LED work light
- Low-power 160 lumen C•O•B LED work light
- High-power C•O•B LED emergency red flasher

DESIGN

- Anodised aircraft-grade aluminium
- Water and impact-resistant
- Powerful magnetic base

OPERATION

- Top-positioned, ON/OFF button

BATTERIES

- Powered by 3 AA batteries (included)

SPECIFICATIONS

- Weight with batteries - 211g
- Length - 192 mm
- Diameter - 28 mm (Head) 22 mm (Barrel)



C•O•B (Chips on Board)

A new innovation in LED technology. C•O•B features smaller, easier clustered LED chips that are mounted directly to the circuit board. These LED chips work together as one lighting module. Because of the compact design, C•O•B outperforms traditional lighting by up to 50 times the light output per centimeter of light surface.



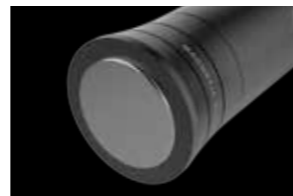
Top Positioned ON/OFF Button



Emergency Red Flasher



Anodised Aircraft-Grade Aluminum



Powerful Magnetic Base

NEW



NEBO[®] the **BIG Larry** POWER WORK LIGHT COUNTERTOP DISPLAY

Display

- Each BIG Larry™ comes with a gift box.
- Display holds 14 pieces; 2 in front for consumer testing, 12 additional pieces stored in the back as replenishments
- Assorted colour display; 7 black & 7 silver
- Product attaches securely to the display using the magnetic base

Display Dimensions

(H) 304 mm x (W) 139 mm x (D) 139 mm



TRY ME
POS
STAND

THREE LIGHT MODES

HIGH:

- 400 Lumens
- 4.5 Hours
- 29 Meters

LOW:

- 160 Lumens
- 15 Hours
- 17 Meters

RED FLASH:

- 40 Hours



CODE	DESCRIPTION	Display Pack
NE6306	BIG Larry™ Power C•O•B LED Work Light	14 Pieces

NEBO®

WORKBRITE®

C-O-B LED WORK LIGHT

The WORKBRITE 2™ adapts to your work environment, making it the handiest of work lights. Equipped with a 200 lumen C-O-B LED work light, the WORKBRITE 2™ also features a 100 lumen flashlight and a rear, emergency red flasher LED. The WORKBRITE 2™ provides hands-free lighting in three different ways: a hanging hook, a 200° pivoting stand and a magnetic base. Whether you are under the hood, under the sink or just out in the dark, the WORKBRITE 2™ works great for any application. WORKBRITE 2™...It stands! It hooks! It sticks! It lights! It WORKS!

LIGHT

- High-power 100 lumen LED flashlight
- High-power 200 lumen C-O-B LED work light
- Emergency Red Flasher LED

DESIGN

- Water and impact-resistant
- Ergonomic, non-slip grip
- 200° pivoting magnetic stand
- Collapsible, hanging hook

OPERATION

- Front-positioned, ON/OFF button
- Emergency Red Flash is independently controlled; press light to activate

BATTERIES

- Powered by 3 AAA batteries (included)

SPECIFICATIONS

- Weight with batteries - 174g
- 215 mm (Length) 50 mm (Width) 38 mm (Depth)



Collapsible, Hanging Hook



Emergency Red Flasher LED



200° Pivoting Stand



Powerful Magnetic Base



Collapsible, Hanging Hook



Emergency Red Flasher LED



200° Pivoting Stand



16.5" USB to Micro USB Cable



Powerful Magnetic Base

NEBO®

THE RECHARGEABLE WORKBRITE®

RECHARGEABLE WORK LIGHT

Never worry about replacing batteries again with The Rechargeable WORKBRITE 2™. This work light is equipped with a 220 lumen C-O-B LED work light, a 120 lumen flashlight and a rear, emergency red flasher LED. The WORKBRITE 2™ provides hands-free lighting in three different ways: a hanging hook, a 200° pivoting stand and a magnetic base. Whether you are under the hood, under the sink or just out in the dark, the WORKBRITE 2™ works great for any application. WORKBRITE 2™...It stands! It hooks! It sticks! It lights! It recharges! It WORKS!

LIGHT

- High-power 120 lumen LED flashlight
- High-power 220 lumen C-O-B LED work light
- Emergency Red Flasher LED

DESIGN

- Fully rechargeable
- Water and impact-resistant
- Ergonomic, non-slip grip
- 200° pivoting magnetic stand
- Collapsible, hanging hook

OPERATION

- Front-positioned, ON/OFF button
- Emergency Red Flash is independently controlled; press light to activate

BATTERIES

- Powered by 1 18650 Li-ion Rechargeable Battery

SPECIFICATIONS

- Weight with batteries - 195g
- 215 mm (Length) 50 mm (Width) 38 mm (Depth)



THREE LIGHT MODES

WORK LIGHT:
200 Lumens

- 3 Hours
- 20 Meters

FLASHLIGHT:
100 Lumens

- 8 Hours
- 47 Meters

RED FLASH:
• 200 Hours

THREE LIGHT MODES

WORK LIGHT:
220 Lumens

- 6 Hours
- 22 Meters

FLASHLIGHT:
120 Lumens

- 8 Hours
- 52 Meters

RED FLASH:
• 200 Hours



Display Dimensions
(H) 323 mm x (W) 139 mm x (D) 196 mm



Display Dimensions
(H) 323 mm x (W) 139 mm x (D) 196 mm



CODE	DESCRIPTION	Display Pack
NE6304	WORKBRITE 2™ C-O-B LED Work Light	12 Pieces

CODE	DESCRIPTION	Display Pack
NE6305	WORKBRITE 2™ Rechargeable	12 Pieces

NEBO[®] SLYDE^Z

FLASHLIGHT & WORK LIGHT

The newest addition to the SLYDE™ family is the SLYDE™Z. Much like its predecessor, the Z features all of the 2-in-1 innovation as the original SLYDE™ with a few additions. What does "Z" mean?...ZOOM, the SLYDE™Z features a 4x adjustable zoom. The Z also has a fully dimmable function for the flashlight and work light as well as an Instant ON feature that automatically activates the C-O-B work light when opened.

LIGHT

- High-power 300 lumen LED flashlight
- High-power 250 lumen C-O-B work light

DESIGN

- Convex lens
- Tactical edge
- 4x adjustable zoom
- Anodised aircraft-grade aluminium; water and impact-resistant
- Dimmable beam
- Instant ON feature (work light)
- Work light is concealed inside the flashlight body; just SLYDE to reveal
- Powerful magnetic base

OPERATION

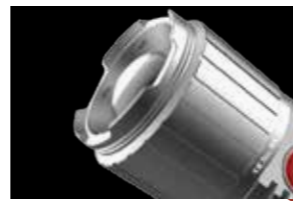
- Side-positioned ON/OFF button; hold to activate dimming
- C-O-B Work light turns ON when opened and OFF when closed

BATTERIES

- Powered by 4 AA batteries (included)

SPECIFICATIONS

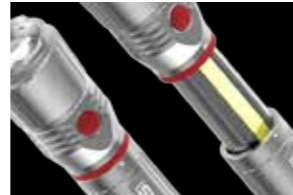
- Weight with batteries - 511g
- Length - 196 mm (Compacted) 261 mm (Extended)
- Diameter - 52 mm (Head) 38 mm (Barrel)



Tactical Edge & Convex Lens



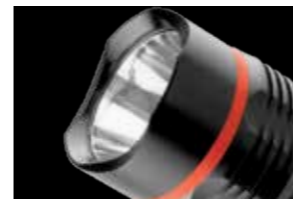
4x Adjustable Zoom



Extendable Body Reveals C-O-B LED



Powerful Magnetic Base



Tactical Edge



Anodised Aircraft-Grade Aluminum



Extendable Body Reveals C-O-B LED



Powerful Magnetic Base



NEBO[®] SLYDE

FLASHLIGHT & WORK LIGHT

Combining the best that NEBO® has to offer, the SLYDE™ features a powerful LED flashlight and C-O-B work light all in one. At first glance, the SLYDE™ appears to be a simple strong flashlight, emitting 250 lumens of intense white light... and it is! However, you will see the SLYDE™ is much more. The body of the SLYDE™ conceals a powerful 190 lumen work light. To reveal the C-O-B work light, just SLYDE to open!

LIGHT

- High-power 250 lumen LED flashlight
- High-power 190 lumen C-O-B work light

DESIGN

- Anodised aircraft-grade aluminium
- Water and impact-resistant
- Work light is concealed inside the flashlight body; just SLYDE to reveal
- Powerful magnetic base

OPERATION

- Side-positioned ON/OFF button with Soft Touch Technology

BATTERIES

- Powered by 4 AAA batteries (included)

SPECIFICATIONS

- Weight with batteries - 305g
- Length - 170 mm (Compacted) 230 mm (Extended)
- Diameter - 42 mm (Head) 33 mm (Barrel)



TWO LIGHT MODES

FLASHLIGHT:

- 300 Lumens
- 2.5 Hours
- 276 Meters

WORK LIGHT:

- 250 Lumens
- 3.5 Hours
- 21 Meters

TRY ME POS STAND



Display Dimensions (H) 313 mm x (W) 230mm x (D) 245 mm

Each SLYDE™Z includes a gift box and instruction manual.

CODE	DESCRIPTION	Display Pack
NE6267	SLYDE™Z Flashlight & Work Light	8 Pieces

TWO LIGHT MODES

FLASHLIGHT:

- 250 Lumens
- 2 Hours
- 220 Meters

WORK LIGHT:

- 190 Lumens
- 3.5 Hours
- 18 Meters

TRY ME POS STAND



Display Dimensions (H) 355mm x (W) 265mm x (D) 205mm

CODE	DESCRIPTION	Display Pack
NE6156	SLYDE Flashlight	16 Pieces

NEBO®

the **Larry™**

POWER COB LED WORK LIGHT

The Larry™ is now **BRIGHTER THAN EVER!** Now, equipped with new C-O-B LED technology, the Larry™C output **170 lumens** of intense light. The rotating magnetic clip gives you convenient hands-free lighting by attaching to virtually anything. The reinforced plastic body design is water and impact-resistant, making this light basically indestructible.

LIGHT

- High-power 170 lumen C-O-B LED work light

DESIGN

- Water and impact-resistant
- Ergonomic non-slip grip
- 180° rotating magnetic clip
- Protective LED housing

OPERATION

- Top-positioned, ON/OFF button

BATTERIES

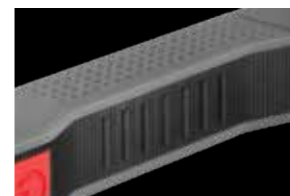
- Powered by 3 AAA batteries (included)

SPECIFICATIONS

- Weight with batteries - 67g
- Length - 160 mm
- Width - 32 mm
- Diameter - 16 mm



180° Rotating Magnetic Clip



Ergonomic Non-Slip Grip



Separate Work Light and Flashlight Buttons



FLASHLIGHT & WORK LIGHT



12 LED WORK LIGHT & FLASHLIGHT

NEBO®

Larry™

Larry™2 has a few more LEDs under his belt, which boosts his lumen output to 160! The Larry™2 also features an LED light that shines from the top turning into a useful flashlight. Being the essential handyman light, the Larry™2 has some great features: the 180° rotating magnetic clip, reinforced plastic body design and ergonomic grip. The Larry™2 is perfect for endless applications and is still convenient enough to slip into your pocket.

LIGHTS

- 12 high-power LEDs output 160 lumens
- 1 LED output 15 lumens

DESIGN

- Water and impact resistant
- Ergonomic non-slip grip
- 180° rotating magnetic clip
- Protective LED housing

OPERATION

- Side Light: ON/OFF button
- Top Light: ON/OFF button

BATTERIES

- Powered by 3 AAA batteries (included)

SPECIFICATIONS

- Weight with batteries - 84g
- Length - 170 mm
- Width - 21 mm
- Diameter - 36 mm

ONE LIGHT MODE

- HIGH:**
170 Lumens
 • 5.6 Hours
 • 20 Meters



Display Dimensions
 (H) 8.75" x (W) 6" x (D) 6"

Gift Box Dimensions
 (H) 6.5" x (W) 1.5" x (D) 0.75"



TWO LIGHT MODES

- WORK LIGHT**
160 Lumens
 • 2 Hours
 • 40 Meters
- LIGHT**
15 Lumens
 • 30 Hours
 • 40 Meters



Display Dimensions
 (H) 160mm x (W) 230mm x (D) 130mm

CODE	DESCRIPTION	Display Pack
NE7002	Larry2 12 LED Work Light	24 Pieces

CODE	DESCRIPTION	Display Pack
NE7002	Larry2 12 LED Work Light	24 Pieces

NEBO®

TRANSPORT®

DC RECHARGEABLE LIGHT

The TRANSPORT DC® is a compact, rechargeable flashlight that provides powerful bright light at your fingertips! Just plug directly into your car, van, boat or any other 12V outlet to charge your flashlight. The TRANSPORT DC® is compatible with any DC 12V socket. Ideal for travel, the TRANSPORT DC® conveniently fits in your pocket, handbag, glove compartment or travel bag.

LIGHT
• High-power 125 lumen LED

DESIGN
• Fully rechargeable
• Fits any 12V outlet (car cigarette lighter)
• Anodised aircraft-grade aluminium; water and impact-resistant

OPERATION
• Top-positioned ON/OFF dial; twist to activate

BATTERIES
• Powered by 1 16340 Lithium Ion rechargeable battery (included)

SPECIFICATIONS
• Weight with battery - 85g
• Length - 98 mm
• Diameter - 30 mm



Anodised Aircraft-Grade Aluminum



Charging Indicator & Twist Dial



Base Fits any 12V Outlet



Compact Size



Diffuser Dome



Glow-in-the-Dark Button



Carabiner Clip



NEBO®

LUMO™

OMNIDIRECTIONAL CLIP LIGHT

Compact, handy and bright...the LUMO™ Clip Light by NEBO® is the perfect "whatever you need it to be" light. Key chain light, purse light, backpack light, book light...the possibilities are endless. This compact 25 lumen light comes with a carabiner attachment to clip anywhere you need. The white top of the LUMO™ is a diffuser dome. This dome helps spread the light evenly to create a more omnidirectional light source. LUMO™ Clip Light...the brilliant clip light!

LIGHT
• High-power 25 lumen LED

DESIGN
• Anodised aircraft-grade aluminium, water and impact-resistant
• Carabiner clip
• Glow-in-the-dark button
• Diffuser dome

OPERATION
• Rear-positioned glow-in-the-dark ON/OFF button

BATTERIES
• Powered by 3 LR44 batteries (included)

SPECIFICATIONS
• Weight with batteries - 25g
• Length - 92 mm
• Diameter - 19 mm

ONE LIGHT MODE

125 LUMENS
• 1 Hour
• 90 Meters



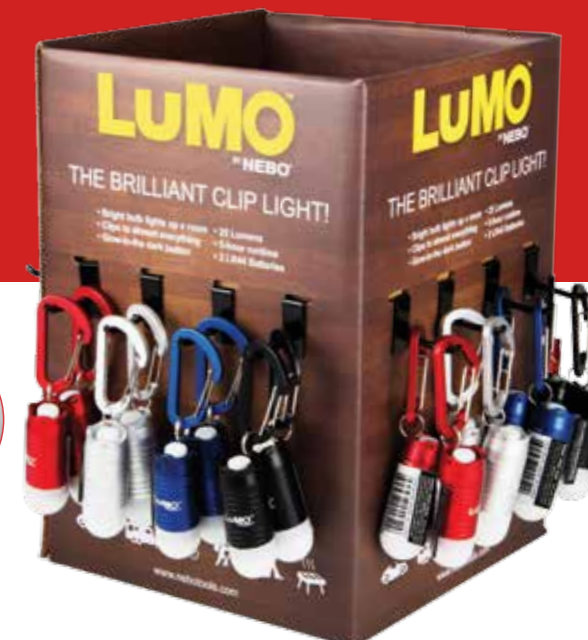
Display Dimensions
(H) 184mm x (W) 193mm x (D) 158mm

Display
• Display holds 8 pieces + 1 piece is stored in the front of the display to show how product sits in 12V outlet
• Assorted colours: 12 black & 6 gray
• 9 additional pieces are included as replenishments

CODE	DESCRIPTION	Display Pack
NE6311	TRANSPORT®DC	18 Pieces

ONE LIGHT MODE

25 LUMENS
• 5 Hours
• 3 Meters



Display Dimensions
(H) 228mm x (W) 165mm x (D) 165mm

Display
• Display holds 48 pieces total; 32 pieces on display and 16 additional pieces stored inside.
• Assorted colours: 12 of each colour.
• Display allows product to be easily tested by consumers.

CODE	DESCRIPTION	Display Pack
NE6095	Lumo™	48 Pieces



6x ZOOM WITH 4 LIGHT MODES

Don't let the micro size fool you...the Micro REDLINE® OC™ packs enough power to carry the REDLINE® name. This light is small enough to fit in the palm of your hand, but bright enough for any situation. Equipped with OC™ Technology the Micro has a perfectly dispersed beam of light while in flood mode. The Micro REDLINE® OC™...small never shined so big!

LIGHT

- High-power 62 Lumen LED

DESIGN

- Anodised aircraft-grade aluminium
- Water and impact-resistant
- OC™ Technology
- Convex lens
- 6x adjustable beam
- Steel belt/pocket clip
- Magnetic base

OPERATION

- Rear-positioned, glow-in-the-dark ON/OFF button with Soft Touch Technology

BATTERIES

- Powered by 1 CR123A battery (included)

SPECIFICATIONS

- Weight with battery - 51g
- Length - 68 mm extended 79 mm
- Diameter - 25 mm (Head) 22 mm (Barrel)



ACTUAL SIZE Comparison

6x ADJUSTABLE ZOOM From Spot to Flood



MAGNETIC BASE and Glow-in-the-dark button



STEEL

Belt/Pocket Clip



OPTIMISED CLARITY

Eliminating inconsistencies in light, the OC™ (Optimised Clarity) Technology provides intense, clear, pristine light that is easy on the eyes. This technology allows the light beam to be as bright on the edge as it is in the center when used in flood mode.



OPTIMISED CLARITY

Eliminating inconsistencies in light, the OC™ (Optimised Clarity) Technology provides intense, clear, pristine light that is easy on the eyes. This technology allows the light beam to be as bright on the edge as it is in the center when used in flood mode.



6x ADJUSTABLE ZOOM

From Spot to Flood

DUAL-DIRECTION

Belt/Pocket Clip



MAGNETIC BASE and Glow-in-the-dark button

HIGH-POWER TACTICAL LIGHT

The REDLINE® OC™ outputs 100 LUM of pristine white light. 100 LUM is bright, but what makes the OC™ so special is the OC™ (Optimised Clarity) Technology. Coupled with the convex lens, the OC™ Technology creates optimized clarity with a perfectly dispersed beam of light while in flood mode. This sophisticated technology provides the intensity of a 100 LUM light that is easy on the eyes. The REDLINE® OC™...optimized clarity.

LIGHT

- High-power 100 Lumen LED

DESIGN

- Anodised aircraft-grade aluminium
- Water and impact-resistant
- OC™ Technology
- Convex lens
- 6x adjustable beam
- Dual-direction belt/pocket clip
- Magnetic base

OPERATION

- Rear-positioned, glow-in-the-dark ON/OFF button with Soft Touch Technology

ACCESSORIES

- Lanyard included

BATTERIES

- Powered by 1 AA battery (included)

SPECIFICATIONS

- Weight with batteries - 115g
- Length - 105 mm extended 115 mm
- Diameter - 35 mm (Head) 26 mm (Barrel)

FOUR LIGHT MODES

HIGH 62 LUMEN • 3.5 Hours • 76 Meters	MEDIUM 32 LUMEN • 6 Hours • 54 Meters	LOW 8 LUMEN • 10 Hours • 25 Meters	STROBE 62 LUMEN • 7 Hours • 76 Meters
---	---	--	---

*NOTE: Light resets to first light mode (HIGH) after being OFF for 20 seconds.

TWO LIGHT MODES

100 LUMEN • 2 hr 30 • 94 Meters	STROBE • 8 Hours
--	----------------------------



Display Dimensions (H) 203 mm x (W) 152 mm x (D) 98 mm

Magnetic Display

- Display holds 10 pieces, 6 additional pieces are included as replenishments
- Products are magnetically secured to the metal display

CODE	DESCRIPTION	Display Pack
NE6272	Micro REDLINE® OC	16 Pieces



Display Dimensions (H) 203mm x (W) 190mm x (D) 210mm

Magnetic Display

- Display holds 12 pieces, 4 additional pieces are included as replenishments
- Products are magnetically secured to the metal display

CODE	DESCRIPTION	Display Pack
NE6092	REDLINE® OC	16 Pieces

TWYST™Z

NEW

WORK LIGHT, LANTERN & FLASHLIGHT

Introducing the newest member of the TWYST™ lineup...TWYST™Z! The TWYST™Z features the same C•O•B lighting options as the original TWYST™: a high-power work light, lantern and flashlight! The TWYST™Z now features a 4x adjustable zoom. A powerful magnetic base also provides convenient hands-free lighting. TWYST™Z...shaping light like never before!

LIGHT

- 75 Lumen C-O-B LED Work Light
- 200 Lumen C-O-B LED Lantern
- 200 Lumen Flashlight

DESIGN

- 4x adjustable zoom
- Enhanced C-O-B LED Technology
- Fully dimmable beam
- Anodised aircraft-grade aluminum; water and impact-resistant
- Powerful magnetic base

OPERATION

- Side-positioned ON/OFF button

BATTERIES

- Powered by 4 AAA batteries (included)

SPECIFICATIONS

- Weight with batteries - 250g
- Length - 160 mm (Compacted) 170 mm (Extended)
- Diameter - 45 mm (Head) 25 mm (Barrel)



75 Lumen C-O-B Work Light



Twist to reveal C-O-B LED



200 Lumen C-O-B Lantern



4x Adjustable Zoom



Powerful Magnetic Base

250 LUMEN LED Flashlight



EXTENDABLE BODY Reveals Work Light



190 LUMEN C-O-B Work Light



POWERFUL Magnetic Base

SLYDE

FLASHLIGHT & WORK LIGHT

Combining the best that NEBO® has to offer, the SLYDE™ features a powerful LED flashlight and C-O-B work light all in one. At first glance, the SLYDE™ appears to be a simple, strong flashlight, emitting 250 lumens of intense white light...and it is! However, you will see the SLYDE™ is much more. The body of the SLYDE™ conceals a powerful 190 lumen work light. To reveal the C-O-B work light, just SLYDE to open!

LIGHT

- High-power 250 lumen LED flashlight
- High-power 190 lumen COB work light

DESIGN

- Anodised aircraft-grade aluminium
- Water and impact-resistant
- Work light is concealed inside the flashlight body; just SLYDE to reveal
- Powerful magnetic base

OPERATION

- Side-positioned ON/OFF button with Soft Touch Technology

BATTERIES

- Powered by 4 AAA batteries (included)
- 4 spare AA Duracell batteries (included)

SPECIFICATIONS

- Weight with batteries - 305g
- Length - 170 mm Extended - 230 mm
- Diameter - 42 mm Head 33 mm Barrel

NEBO® ...BRIGHT IDEAS



TRY ME BUTTON



THREE LIGHT MODES

- | | | |
|---|--|--|
| WORK LIGHT
75 Lumens
• 10 Hours
• 11 Meters | LANTERN
200 Lumens
• 2 Hours
• 13 Meters | FLASHLIGHT
200 Lumens
• 2 Hours
• 107 Meters |
|---|--|--|

TWO LIGHT MODES

- | | |
|---|---|
| FLASHLIGHT:
250 Lumens
• 2 Hours
• 220 Meters | WORK LIGHT
190 Lumens
• 3.5 Hours
• 18 Meters |
|---|---|



COB (Chips on Board)

A new innovation in LED technology. COB features smaller, easier clustered LED chips that are mounted directly to the circuit board. These LED chips work together as one lighting module. Because of the compact design, COB outperforms traditional lighting by up to 50 times the light output per centimeter of light surface.



TRY ME BUTTON

NEBO® ...BRIGHT IDEAS



Pack size 120 mm 300 mm

CODE	DESCRIPTION
NB6372	TWYST-Z

CODE	DESCRIPTION
NB6156	SLYDE™

NEBO® ...BRIGHT IDEAS

the BIG Larry™

POWER WORK LIGHT

POWER C-O-B LED WORK LIGHT

The BIG Larry™ knows how to light up a room! Equipped with new C-O-B LED technology, the BIG Larry™ outputs 400 lumens of intense light. Secondary light modes include Low (160 lumens) and the Emergency Red Flash mode. This intense red light is perfect for distress signaling or roadside emergencies. The anodised aluminium body and recessed LED housing ensures that the BIG Larry™ can handle any situation.

LIGHT

- High-power 400 lumen C-O-B LED work light
- Low-power 160 lumen C-O-B LED work light
- High-power C-O-B LED emergency red flasher

DESIGN

- Anodised aircraft-grade aluminium
- Water and impact-resistant
- Powerful magnetic base

OPERATION

- Top-positioned, ON/OFF button

BATTERIES

- Powered by 3 AA batteries (included)
- 3 spare AA Duracell batteries (included)

SPECIFICATIONS

- Weight with batteries - 211g
- Length - 192 mm
- Diameter - 28 mm (Head) 22 mm (Barrel)

NEW

TOP-POSITIONED
ON/OFF Button



EMERGENCY
Red Flasher

AIRCRAFT-GRADE
Anodised Aluminium



POWERFUL
Magnetic Base



ON/OFF BUTTON
Controls the Light

160 LUMEN
COB Light



Pen clip
Strong and durable

ERGONOMIC
Non-Slip Grip

POWERFUL
Magnetic Base



NEBO® ...BRIGHT IDEAS

LiL Larry™

POWER POCKET LIGHT

POWER C-O-B LED WORK LIGHT

The LiL Larry™ knows how to light up a room! Equipped with new C-O-B LED technology, the LiL Larry™ outputs 250 lumens of intense light. Secondary light modes include Low (95 lumens) and the Emergency Red Flash mode. This intense red light is perfect for distress signaling or roadside emergencies. The anodised aluminium body and recessed LED housing ensures that the LiL Larry™ can handle any situation. Its small size makes this flashlight extremely portable.

LIGHT

- High-power 250 lumen C-O-B LED work light
- Low-power 95 lumen C-O-B LED work light
- High-power C-O-B LED emergency red flasher

DESIGN

- Anodised aircraft-grade aluminium
- Water and impact-resistant
- Powerful magnetic base

OPERATION

- Top-positioned, ON/OFF button

BATTERIES

- Powered by 2 AAA batteries (included)

SPECIFICATIONS

- Weight with batteries - 89g
- Length - 151 mm
- Diameter - 20 mm (Head) 15 mm (Barrel)

NEW

NEBO® ...BRIGHT IDEAS



TRY ME
BUTTON

Pack size 120 mm 240 mm

THREE LIGHT MODES



HIGH:
400 Lumens
• 4.5 Hours
• 29 Meters

LOW:
160 Lumens
• 15 Hours
• 17 Meters

RED FLASH:
• 40 Hours

THREE LIGHT MODES



HIGH:
400 Lumens
• 4.5 Hours
• 29 Meters

LOW:
160 Lumens
• 15 Hours
• 17 Meters

RED FLASH:
• 40 Hours

NEBO® ...BRIGHT IDEAS



TRY ME
BUTTON

Pack size 120 mm 240 mm

CODE	DESCRIPTION
NB6306	BIG Larry™ Power C-O-B LED Work Light

CODE	DESCRIPTION
NB6327	LiL Larry™

the Larry™

POWER COB LED WORK LIGHT

The Larry™ is now **BRIGHTER THAN EVER!** Now, equipped with new C-O-B LED technology, the Larry™C output **170 lumens** of intense light. The rotating magnetic clip gives you convenient hands-free lighting by attaching to virtually anything. The reinforced plastic body design is water and impact-resistant, making this light basically indestructible.

LIGHT

- High-power 170 lumen C-O-B LED work light

DESIGN

- Water and impact-resistant
- Ergonomic non-slip grip
- 180° rotating magnetic clip
- Protective LED housing

OPERATION

- Top-positioned, ON/OFF button

BATTERIES

- Powered by 3 AAA batteries (included)

SPECIFICATIONS

- Weight with batteries - 67g
- Length - 160 mm
- Width - 32 mm
- Diameter - 16 mm

ON/OFF BUTTON
with Soft Touch Technology

NEW

2in1
FLASHLIGHT & WORK LIGHT

170 LUMEN
Work Light



200° PIVOTING
Magnetic Clip

COLLAPSIBLE
Hanging Hook

EMERGENCY
Red Flasher

USB TO MICRO USB
Cable included

POWERFUL
Magnetic Base

THE RECHARGEABLE WORKBRITE™

RECHARGEABLE WORK LIGHT

Never worry about replacing batteries again, with The Rechargeable WORKBRITE 2™. This work light is equipped with a 220 lumen C-O-B LED work light, a 120 lumen flashlight and a rear, emergency red flasher LED. The WORKBRITE 2™ provides hands-free lighting in three different ways: a hanging hook, a 200° pivoting stand and a magnetic base. Whether you are under the hood, under the sink or just out in the dark, the WORKBRITE 2™ works great for any application. WORKBRITE 2™...It stands! It hooks! It sticks! It lights! It recharges! It WORKS!

LIGHT

- High-power 120 lumen LED flashlight
- High-power 220 lumen C-O-B LED work light
- Emergency Red Flasher LED

DESIGN

- Fully rechargeable
- Water and impact-resistant
- Ergonomic, non-slip grip
- 200° pivoting magnetic stand
- Collapsible, hanging hook

OPERATION

- Front-positioned, ON/OFF button
- Emergency Red Flash is independently controlled; press light to activate

BATTERIES

- Powered by 1 18650 Li-ion Rechargeable Battery

SPECIFICATIONS

- Weight with battery - 174g
- Length - 215 mm
- Depth - 38 mm



TRY ME
BUTTON

Pack size 120 mm 300 mm

ONE LIGHT MODE

HIGH:
170 Lumens
• 5.6 Hours
• 20 Meters

THREE LIGHT MODES

WORK LIGHT:
220 Lumens
• 7 Hours
• 322 Meters

FLASHLIGHT:
120 Lumens
• 25 Hours
• 160 Meters

RED FLASH:
• 200 Hours

CODE	DESCRIPTION
NB6327	LARRY C™

CODE	DESCRIPTION
NB6305	WORKBRITE 2™ Rechargeable



TRY ME
BUTTON

Pack size 120 mm 300 mm

PaL

RECHARGEABLE POWER & LIGHT

This portable, rechargeable flashlight serves as a backup power source for mobile phones and other rechargeable USB electronic devices. Ideal for travel, the PaL conveniently fits in your pocket, purse or briefcase.

LIGHT

- High-power 50 lumen LED

DESIGN

- Fully rechargeable
- Power bank for your USB powered devices
- Anodised aircraft-grade aluminium
- Impact-resistant
- USB & Micro USB charging ports
- Apple® & Android™ compatible
- Charging indicator tells charging status of flashlight and your USB powered devices

OPERATION

- Rear-positioned ON/OFF button with charging indicator

ACCESSORIES

- USB to Micro USB cable included

BATTERIES

- Powered by 1 internal 2600 mAh Lithium-Ion Battery (Type 18650)

SPECIFICATIONS

- Weight with battery - 78g
- Length - 110 mm
- Diameter - 22 mm

HIGH-POWER
50 Lumen LED

APPLE® & ANDROID™
Compatible

USB to MICRO USB
20cm Cable Included

USB / MICRO USB
Charging Ports

DIFFUSER DOME
Softens the Light

CARABINER
Clip

GLOW-IN-THE-DARK
ON/OFF Button

ANODISED
Aircraft-Grade Aluminium



TRY ME
BUTTON

Pack size 120 mm 240 mm

ONE LIGHT MODE

50 Lumens
• 17.5 Hours
• 54 Meters

ONE LIGHT MODE

25 Lumens
• 5 Hours
• 3 Meters

LUMO

OMNIDIRECTIONAL CLIP LIGHT

Compact, handy and bright...the LUMO™ Clip Light by NEBO® is the perfect "whatever you need it to be" light. Key ring light, handbag light, travel light, book light...the possibilities are endless. This compact 25 lumen light comes with a carabiner attachment to clip anywhere you need. The white top of the LUMO™ is a diffuser dome. This dome helps spread the light evenly to create a more omnidirectional light source. LUMO™ Clip Light...the brilliant clip light!

LIGHT

- High-power 25 lumen LED

DESIGN

- Anodised aircraft-grade aluminium
- Water and impact-resistant
- Carabiner clip
- Glow-in-the-dark button
- Diffuser dome

OPERATION

- Rear-positioned glow-in-the-dark ON/OFF button

BATTERIES

- Powered by 3 LR44 batteries (included)

SPECIFICATIONS

- Weight with batteries - 25g
- Length - 92 mm
- Diameter - 19 mm



TRY ME
BUTTON

Pack size 90 mm x 130 mm

CODE	DESCRIPTION
NB6227	PAL

CODE	DESCRIPTION
NB6095	LUMO™

WORK LIGHT, LANTERN & FLASHLIGHT

A light that does it all...with a TWYST™! The TWYST™ features a high-power work light, lantern and flashlight all in one! The TWYST™ uses a revolutionary new C•O•B LED technology that allows the shaping of light into full 3D patterns, giving optimal, bright, uniform light exactly where it's needed. Retractable base stabilizers are positioned at the bottom of the flashlight to give added stability on uneven surfaces. A powerful magnetic base also provides convenient hands-free lighting. TWYST™... shaping light like never before!

LIGHT

- 110 Lumen Work Light
- 250 Lumen Lantern
- 270 Lumen LED Flashlight

DESIGN

- Enhanced C•O•B LED Technology
- Tactical edge
- Fully dimmable beam
- Anodised aircraft-grade aluminium
- Water and impact-resistant
- Retractable base stabilizers
- Powerful magnetic base

OPERATION

- Side-positioned ON/OFF button

BATTERIES

- Powered by 4 AA batteries (included)

SPECIFICATIONS

- Weight with batteries - 385g
- Length - 190 mm (Compacted) 200 mm (Extended)
- Diameter - 50.8 mm (Head) 31 mm (Barrel)



TWYST™ BEZEL

Reveals C•O•B LED



SIDE -POSITIONED

ON/OFF Button



250 LUMENS

250 LUMEN
LED Flashlight

TACTICAL FLASHLIGHT

The PRO250LIGHT has a high-power LED that outputs 250 lumens of intense white light and it also features a 6x adjustable zoom that changes from floodlight to spotlight. The magnetic base and steel belt clip provide convenient hands-free lighting.

- Convex lens
- Anodised aircraft grade aluminium
- Water-resistant
- Compact body design
- Rear glow in the dark tactical button
- 6 X adjustable beam zoom, steel clip
- Impact resistant: 2 meters
- 3 Duracell AAA batteries (1 Set included)

SPECIFICATIONS

- Weight with batteries - 148g
- Length - 112 mm (Compacted) 123 mm (Extended)
- Diameter - 39 mm (Head) 30 mm (Barrel)



STEEL

Belt/Pocket Clip

6x ADJUSTABLE ZOOM

From Spot to Flood



OPTIMISED CLARITY

Eliminating inconsistencies in light, the OC™ (Optimised Clarity) Technology provides intense, clear, pristine light that is easy on the eyes. This technology allows the light beam to be as bright on the edge as it is in the center when used in flood mode.

THREE LIGHT MODES

- | | | |
|-------------------|----------------|-------------------|
| Flashlight | Lantern | Work Light |
| • 270 Lumens | • 250 Lumens | • 110 Lumens |
| • 4 Hours | • 4 Hours | • 13.5 Hours |
| • 233 Meters | • 15 Meters | • 15 Meters |

FIVE LIGHT MODES

- | | | | | |
|--------------------------|---------------|-------------|--------------|---------------|
| High - 250 Lumens | Medium | Low | S.O.S | Strobe |
| • 2.5 Hours | • 6.5 Hours | • 20 Hours | • 20 Hours | • 24 Hours |
| • 206 Meters | • 140 Meters | • 87 Meters | • 148 Meters | • 148 Meters |



Display Box Size
(H) 250 x (W) 110 x (D) 60mm



POWERFUL
Magnetic Base



RETRACTABLE
Base Stabilizers



POWERFUL MAGNETIC BASE
FOR HANDS FREE LIGHT



STEALTH LIGHT
Green Low Light

CODE	DESCRIPTION
IP6296	iPROTEC TWYST

CODE	DESCRIPTION
IP6273	iPROTEC PRO250LIGHT



Clamshell Dimensions
(H) 208 x (W) 113 x (D) 41mm

FLASHLIGHT & WORK LIGHT

PRODUALLIGHT

Combining the best that NEBO® has to offer, the SLYDE™ features a powerful LED flashlight and C•O•B work light all in one. At first glance, the SLYDE™ appears to be a simple, strong flashlight, emitting 250 lumens of intense white light... and it is! However, you will see the SLYDE™ is much more. The body of the SLYDE™ conceals a powerful 190 lumen work light. To reveal the C•O•B work light, just SLYDE to open!

- LIGHT**
- High-power 250 lumen LED flashlight
 - High-power 190 lumen C•O•B work light

- DESIGN**
- Anodised aircraft-grade aluminium
 - Water and impact-resistant
 - Work light is concealed inside the flashlight body; just SLYDE to reveal
 - Powerful magnetic base

- OPERATION**
- Side-positioned ON/OFF button with Soft Touch Technology

- BATTERIES**
- Powered by 4 AAA batteries (included)

- SPECIFICATIONS**
- Weight with batteries - 305g
 - Length - 170 mm (Compacted) 230 mm (Extended)
 - Diameter - 42 mm (Head) 33 mm (Barrel)

250 LUMENS

250 LUMEN
LED Flashlight

2 in 1
INNOVATION
FLASHLIGHT & WORK LIGHT



EXTENDABLE BODY

Reveals C•O•B Work Light

190 LUMEN

C•O•B Work Light



POWERFUL
Magnetic Base

CODE	DESCRIPTION
IP6295	PRODUALLIGHT SLYDE



Colour-CHANGING
High-Power LED

STEEL
Belt/Pocket Clip

GLOW-IN-THE-DARK
Tactical Button

GREEN/RED
Mixture



Clamshell Dimensions
(H) 208 x (W) 113 x (D) 41mm

CODE	DESCRIPTION
IP5905	iPROTEC CHAMELEON™

FOUR LIGHT MODES

- | | | | |
|---|--|--|--|
| WHITE - 100 LUMEN
• 4 Hours
• 80 Meters | GREEN - 90 LUMEN
• 5 Hours
• 70 Meters | RED - 85 LUMEN
• 7 Hours
• 50 Meters | STROBE - 100 LUMEN
• 5 Hours
• 80 Meters |
|---|--|--|--|

THREE LIGHT MODES

- | | | |
|---|-----------------------------------|-----------------------------|
| WHITE LED - 150 LUMEN
• 3 Hours
• 56 Meters | GREEN - 3.5 LUMEN
• 7.5 Meters | RED - 4 LUMEN
• 8 Meters |
|---|-----------------------------------|-----------------------------|

TWO LIGHT MODES

- | | |
|--|---|
| Flashlight - 250 Lumens
• 2 Hours
• 220 Meters | Work Light - 190 Lumens
• 3.5 Hours
• 18 Meters |
|--|---|



C•O•B (Chips on Board)

A new innovation in LED technology. COB features smaller, easier clustered LED chips that are mounted directly to the circuit board. These LED chips work together as one lighting module. Because of the compact design, COB outperforms traditional lighting by up to 50 times the light output per centimeter of light surface.

Clamshell Dimensions
(H) 265 x (W) 113.03 x (D) 44 mm

TOP POSITIONED

ON/OFF Toggle Switch

HEAD BAND

Adjustable



TACTICAL LIGHT MODES

White + Green + Red

ADJUSTABLE

90° Vertical tilt



White

Green

Red

CODE	DESCRIPTION
IP6180	PRO150LIGHT

Clamshell Dimensions
(H) 208 x (W) 113 x (D) 75 mm

TACTICAL FLASHLIGHT

CHAMELEON

The Chameleon™ has a high-power, colour-changing LED that outputs white, green and red light. Hard/Soft Touch Technology allows you to easily cycle through the four impressive light modes.

- LIGHT**
- High-power colour-changing LED

- DESIGN**
- Anodised aircraft-grade aluminium
 - Water and impact-resistant
 - Convex lens
 - 4x adjustable zoom
 - Steel belt/pocket clip

- OPERATION**
- Rear-positioned ON/OFF button with Soft Touch Technology

- BATTERIES**
- 1 AA batteries included

- SPECIFICATIONS**
- Weight with batteries - 82g
 - Length open - 107 mm closed 101 mm
 - Diameter - 25 mm (Head) 19 mm (Barrel)

TACTICAL HEADLAMP

PRO150LIGHT

The PRO 150 LIGHT Headlamp has a high-power LED that outputs 150 lumens of intense white light and 2 additional tactical coloured lights, GREEN and RED.

- LIGHT**
- 150 Lumen Work Light
 - 3.5 Lumen Green Light
 - 4 Lumen Red Light

- DESIGN**
- Light travels 56 metres
 - Three colour lighting modes
 - Adjustable elastic head strap
 - Water and impact - resistant
 - 90° Vertical tilt

- OPERATION**
- 3 light modes: white, green & red
 - ON/OFF button on top

- BATTERIES**
- Powered by 3 AAA batteries (included)

- SPECIFICATIONS**
- Weight - 90g
 - Length - 59 mm (Compacted) 80 mm (Extended)
 - Width - 45 mm 19 mm (Barrel)



**TACTICAL FLASHLIGHT
PRO280LIGHT**

- Convex lens
- Anodised aircraft grade aluminium
- Water-resistant
- Compact body design
- Rear glow in the dark tactical button
- 4 X adjustable beam zoom, steel clip
- Impact resistant: 2 meters
- 3 Duracell AAA batteries (1 Set included)

SPECIFICATIONS

- Weight with batteries - 158g
- Length - 118 mm (Compacted)
127 mm (Extended)
- Diameter - 38 mm

CODE	DESCRIPTION
IP5620	iPROTEC PRO280LIGHT

280 LUMENS



FIVE LIGHT MODES

- | | | | | |
|--|---|--|---|--|
| High - 280 Lumens
• 2.5 Hours
• 198 Meters | Medium - 70 Lumens
• 5 Hours
• 100 Meters | Low - 37 Lumens
• 12 Hours
• 40 Meters | Strobe - 220 Lumens
• 60 Hours
• 200 Meters | S.O.S - 220 Lumens
• 60 Hours
• 200 Meters |
|--|---|--|---|--|

TWO LIGHT MODES

- | | |
|--|--|
| High - 180 Lumens
• 120 Min
• 115 Meters | Strobe - 180 Lumens
• 390 Min
• 115 Meters |
|--|--|

**TACTICAL FLASHLIGHT
PRO180LIGHT**

- Anodised aircraft grade aluminium
- Water-resistant
- Compact body design
- Rear glow-in-the-dark button
- Powerful magnetic base for hands-free lighting
- Convex lens
- 1 Duracell AA battery included

SPECIFICATIONS

- Weight wei - 82g
- Length - 100 mm (Compacted)
106 mm (Extended)
- Diameter - 27 mm

CODE	DESCRIPTION
IP6079	iPROTEC PRO180LIGHT

180 LUMENS



220 LUMENS



FIVE LIGHT MODES

- | | | | | |
|--|---|--|--|---|
| High - 220 Lumens
• 4 Hours
• 138 Meters | Medium - 110 Lumens
• 8 Hours
• 60 Meters | Low - 22 Lumens
• 15 Hours
• 27 Meters | S.O.S - 220 Lumens
• 72 Hours
• 138 Meters | Strobe - 220 Lumens
• 72 Hours
• 138 Meters |
|--|---|--|--|---|

TWO LIGHT MODES

- | | |
|---|---|
| High - 100 Lumens
• 120 Min
• 80 Meters | Strobe - 100 Lumens
• 270 Min
• 80 Meters |
|---|---|

**TACTICAL FLASHLIGHT
PRO220LIGHT**

- Anodised aircraft grade aluminium
- Water-resistant
- Compact body design
- Rear glow in the dark tactical button
- Convex lens
- 4 X adjustable beam
- Powerful magnetic base for hands-free lighting
- Impact resistant: 2 meters, steel clip
- 3 Duracell AAA batteries included

SPECIFICATIONS

- Weight with batteries - 133g
- Length - 110 mm (Compacted)
116 mm (Extended)
- Diameter - 34 mm

CODE	DESCRIPTION
IP5929	iPROTEC PRO220LIGHT

**TACTICAL FLASHLIGHT
PRO100LIGHT**

- Anodised aircraft grade aluminium
- Water-resistant
- Compact body design
- Removable chrome plated head, steel clip
- Rear glow-in-the-dark button - this button allows you to easily activate the light while maintaining constant control of the flashlight
- 1 Duracell AA battery included

SPECIFICATIONS

- Weight with batteries - 65g
- Length - 102 mm (Compacted)
108 mm (Extended)
- Diameter - 23 mm

CODE	DESCRIPTION
IP6078	iPROTEC PRO100LIGHT

100 LUMENS



LIGHTING 101

GAUGING LED PERFORMANCE

Measuring the brightness of light is not a very straight-forward task. Currently, the most common measure of brightness is the lumen rating. Lumens replaced the old wattage-rating system because modern lights consume far less power and are much brighter.

A single lumen is the measure of energy that's released from a light. Imagine putting a transparent bubble around a light bulb and being able to measure all of the energy that flows through the bubble -this is how lumens are measured.

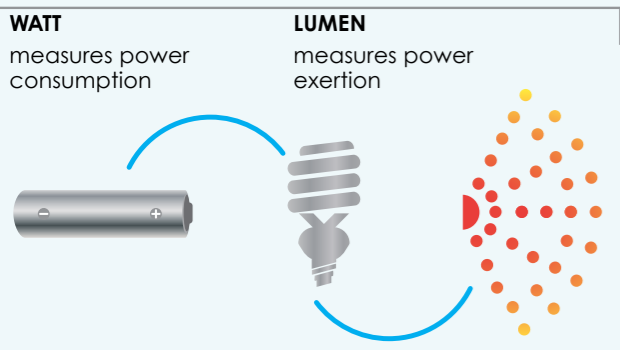
At NEBO®, we don't live in a bubble and we know that as lighting technology advances, so must the tools used to gauge

the performance. Thus, many of our flashlights are now gauged by lux instead of lumens. Lux isn't a measurement of the amount of energy released — it's a measure of how much light is actually hitting your target.

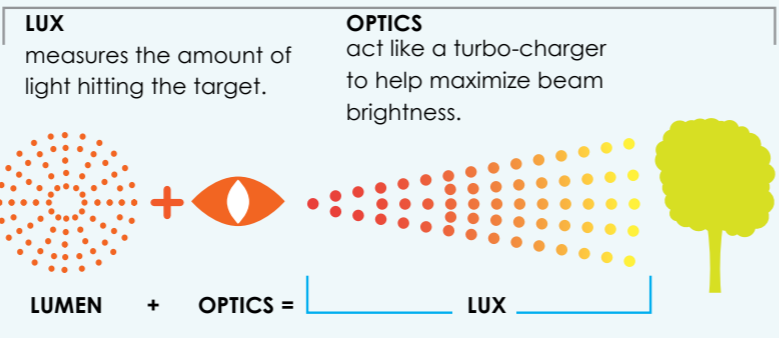
We've recently introduced flashlights that have advanced optics designed to maximize energy efficiency by tightly focusing the beam of light. So you can light up the mystery across the field without wasting energy by lighting the ground at your feet.

At NEBO® we make flashlights that are designed to meet real-life applications and we use advanced engineering to create lighting products that conserve energy yet blast a powerful beam of light.

MEASURING POWER:



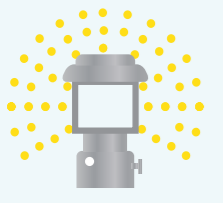
MEASURING BRIGHTNESS:



RATING PERFORMANCE BY PRODUCT TYPE:

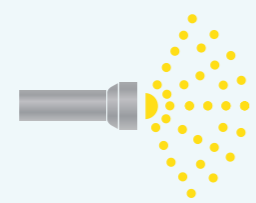
LANTERNS & WORK LIGHTS

These lighting products are designed to illuminate the area around — just like a household light bulb. Since light bulbs are rated in lumens, lantern output is rated using lumens.



CLASSIC FLASHLIGHTS

Classic flashlights illuminate the area directly in front of us — mimicking a light-post fixture, so it's appropriate to also rate these products using lumens.



LONG-RANGE FLASHLIGHTS

These flashlights feature specialized optics with zoom capabilities that are designed to project an intense beam of light at a distance. Lumen ratings ignore the use of specialized optics and fail to provide a clear representation of beam distance or brightness. Lux on the other hand, measures the amount of light actually hitting the target.



FOCUSING THE INTENSITY

The natural tendency of light is to disperse. We use patented O² Technology™ to focus the light's intensity by bending it toward the center of the beam.

The result — a hotter, brighter spotlight with the lowest power consumption.



STANDARD BEAM DISTANCE

O² TECHNOLOGY™ DOUBLES THE BEAM DISTANCE

A BEAM OF LIGHT SO POWERFUL, YOU HAVE TO SEE TO BELIEVE!

DEFINITIONS

High-Powered LEDs

These LEDs produce a more intense light that travels a further distance than cluster LEDs. Conversely, these also use more power than clusters do.

Cluster LEDs

These LEDs consume less power while still providing a bright light. They tend to produce a wide angle of light and are better used for short range lighting to illuminate your immediate area.

Optimised Clarity

Eliminating inconsistencies in light, the OC™ - Optimised Clarity Technology provides intense, clear, pristine light that is easy on the eyes. This technology allows the light beam to be as bright on the edge as it is in the center when used in flood mode.

Flex-Power

The SEVEN-Z™ is fueled by FLEX-POWER™, technology that allows the flexibility to use different quantities of batteries to power the light. SEVEN-Z™ will function with 3 AA, 6 AA or with the optimal 9 AA batteries for full 770 lumens of power.

Adjustable Focus

The adjustable focus feature allows the user to change the focus of the light beam from a spot light (a sharply focused beam of light that illuminates more distant areas) to a flood light (a broad circular beam of light that illuminates larger, close-up areas.)

C.O.B. (Chips on Board) Technology

A new innovation in LED technology. COB features smaller, easier clustered LED chips that are mounted directly to the circuit board. These LED chips work together as one lighting module. Because of the compact design, COB outperforms traditional lighting by up to 50 times the light output per centimeter of light surface.

Green LEDs

Because the human eye recognizes the color green faster than other colors, green light is used for map reading or signaling, especially in low light conditions. Also perfect for hunting as some game cannot see green light.

Red LEDs

Red light is primarily used to preserve night vision. Best used for low-light or nighttime situations, the low-signature red light provides great contrast making it easier to read charts and maps. Police and military units utilize the red LED for night operations because it will not interfere with night vision technology and cannot be seen by the human eye over long distances. Fire rescue units also use the red LED because it provides better visibility in smoky situations than white light.

Hands-Free Lighting

Hands-Free lighting allows the user to illuminate a desired area while maintaining the use of both hands. We use clips, straps and magnets to give hands-free options with some of our products.

Convex Lens

The convex lens evenly distributes the light for a highly concentrated beam without dull or dark spots, as most traditional flashlights have.

Lighting Modes

Our advanced circuitry allows for variable brightness control and lighting flash sequence with a simple touch of a switch that regulates the lighting mode. By decreasing brightness you can extend the run time of the battery.

Strobe Lighting Mode

Perfect for signaling, the defensive strobe mode can also be used to disorient an animal by shining it at them. Please use with caution when doing this.

S.O.S. Lighting Mode

S.O.S. is the commonly used description for the international Morse Code distress signal. The code for S.O.S. is 3 short, 3 long and 3 short signals. The S.O.S. sequence will repeat until the setting is changed or the light is turned off.

Run Time

We give run time information for each of our products to help you understand how long each product will perform the way you need it to. We use energy efficient methods to ensure the longest run times.



sales@true-brands.co.uk +44(0)1202 755392 www.nebotools.co.uk

For more information or to place an order contact your True Brands sales representative
True Brands Ltd. Unit 2 Branksome Business Park, Bourne Valley Road, Poole, BH12 1DW, UK