

STRUCTURED WIRING

Enclosures	XXX
Modules	XXX
Faceplates	XXX
Cable Entry Plates.....	XXX
Mounting Boxes & Brackets	XXX
Inserts	XXX
Patch Panels & Cross Connect.....	XXX
Rack Management Systems	XXX



STRUCTURED WIRING

LINE CARD

(9N) Arlington
(5F) DataComm Electronics
(H2) ICC (Int'l Conn & Cable Corp)
(H4) Legrand
(2H) Leviton
(LV) Leviton Security & Automation
(CS) Nortek Security & Control (Linear)
(9U) Midlite
(Y4) Suttle Apparatus
(TQ) Trendnet
(0E) W Box Technologies
(6W) Wiremold



1.800.233.6261
adiglobal.com/us



Enclosure Boxes

- Heavy-duty and UV rated non-metallic boxes protect and secure power backups, security devices and other valuable equipment, debris-free

9N-EB0708 (EB0708)

- 7 x 8 x 3.5"

9N-EB1212 (EB1212)

- 12 x 12 x 4"



8" Residential Wiring Enclosure, 6-Pack

- (6) covers and (6) bases
- (6) 8-port phone and (6) 1 x 6 video modules
- Modules packaged separately
- Tough ABS plastic, surface or stud mount

H2-RDSMMBK8 (ICRDSMMBK8)



9" Residential Wiring Enclosures

- Tough ABS plastic cover and base
 - Surface or stud mount
 - Modules packaged separately
- H2-RESDC9PK** (ICRESDC9PK)
- 8-port phone, 8-port Cat 6 data, 1 x 6 video
- H2-RESDC9PD** (ICRESDC9PD)
- 8-port phone, 1 x 6 video



14" Residential Wiring Enclosure

- Tough 20 gauge steel, stud mount
 - Includes reversible hinged door
 - Modules packaged separately
- H2-RESDC14K** (ICRESDC14K)
- 8-port phone, 8-port Cat 6 data, 1 x 6 video
- H2-RESDC14D** (ICRESDC14D)
- 8-port phone, 1 x 6 video



Phone & Data Modules, Fits ICC & Most Major Brand Enclosures

- H2-RESDPA3C** (ICRESDPA3C)
- 8-port Cat 5e data
- H2-RESDPB3C** (ICRESDPB3C)
- 8-port Cat 6 data
- H2-RESVPA3C** (ICRESVPA3C)
- 8-port voice, 4 bridged lines
- H2-RESVPB3C** (ICRESVPB3C)
- 8-port voice expansion



Durable Plastic-Covered Phone & Data Modules

- H2-RESDPA2C** (ICRESDPA2C)
- 8-port Cat 5e data
- H2-RESDPB2C** (ICRESDPB2C)
- 8-port Cat 6 data
- H2-RESVPA2C** (ICRESVPA2C)
- 8-port voice, 4 bridged lines
- H2-RESVPB2C** (ICRESVPB2C)
- 8-port voice expansion



12" Enclosure with Screw-On Cover

- Flanged covers hide drywall openings
- Flush and surface installation
- Cover included

H4-EN1200 (EN1200)



14" Enclosure with Screw-On Cover

- Flanged covers hide drywall openings
- Drywall depth indicators
- Flush and surface installation
- Cover included

H4-EN1400 (EN1400)



20" Enclosure with Screw-On Cover

- Flanged covers hide drywall openings
- Drywall depth indicators
- Flush and surface installation
- Cover included

H4-EN2000 (EN2000)





28" Enclosure with Hinged Door

- Flanged covers hide drywall openings
- Drywall depth indicators
- Flush and surface installation
- Cover included

H4-EN2850 (EN2850)



28" Enclosure with Screw-On Cover

- Flanged covers hide drywall openings
- Drywall depth indicators
- Flush and surface installation
- Cover included

H4-EN2800 (EN2800)



14" SMC Enclosure and Cover

- White powder coated 20 gauge steel (enclosure), 18 gauge steel (cover/door). Networking, fax, Internet, DSL and cable, hosts two pre-configured Leviton structured cabling panels.

LV-47605140 (47605-140)



RF Transparent Structured Media® Enclosure

- ABS polymer construction expands the reach of all wireless signals including Wi-Fi B/G/N/AC
- 30" Enclosure compatible with most Leviton Structured Media® patch panels

LV-4960530W (49605-30W)



From NORTEK Security & Control



Wi-Fi Friendly Structured Wiring - Metal Enclosures and Covers

- Mounts between studs, 16-gauge all-metal construction, white powder-coat paint. Plastic covers (CS-HD18 or CS-HD36) are Wi-Fi friendly, add depth to cabinet.

- CS-H318** (H318)
- 18" enclosure
- CS-H336** (H336)
- 36" enclosure
- CS-HC18A** (HC18A)
- 18" enclosure cover



From NORTEK Security & Control



Wi-Fi Friendly Enclosure Covers

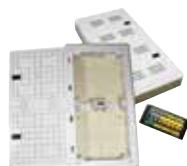
- Hinged Wi-Fi Friendly door
- With window

CS-HD18

- For H318

CS-HD36

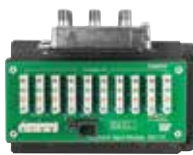
- For H336



MediaMAX™ Premise Distribution System

- Provides reliable premise connectivity for wired and wireless high-speed, triple-play; plastic modular enclosures and tool-less, snap-in modules minimize wireless interference
- Designed to optimize installation cost and practices while maximizing coverage and bandwidth at the point of use for multiple deployment topologies

Y4-MXE30E1 (MXE-30E-1XM)



10 x 8 Combo Module IDC with RJ31X

- 8-way passive digital HDTV cable splitter
- Surge protection on all coax ports
- 1 x 10 4-line RJ45 telecom module
- RJ31X security line interface

H4-CO1110 (CO1110)



1 x 9 Bridged Telephone Board

- Universal 1 x 9 telephone bridging board fits any Leviton Structured Media™ enclosure, bridges up to four telephone lines through to nine outlet locations

LV-47689B (47689-B)

Linear

From NORTEK Security & Control



Telephone Distribution Modules

CS-H616 (H616)

- Telephone master hub

CS-H618 (H618)

- Telephone expansion hub



1-Port Single Gang Faceplate

- Configurable with ICC modular connectors
- Flush mount style. Durable ABS plastic.
- Other colors available

H2-107F01WH (IC107F01WH)

- White

H2-107F01AL (IC107F01AL)

- Almond

H2-107F01IV (IC107F01IV)

- Ivory



2-Port Single Gang Faceplate

- Configurable with ICC modular connectors
- Flush mount style. Durable ABS plastic.
- Other colors available

H2-107F02WH (IC107F02WH)

- White

H2-107F02AL (IC107F02AL)

- Almond

H2-107F02IV (IC107F02IV)

- Ivory



2-Port Single Gang Faceplate, 25-Pack, White

- Configurable with ICC modular connectors
- Packaged in a resealable box for easy storage
- Also available in ivory

H2-107F2CWH (IC107F2CWH)



3-Port Single Gang Faceplate

- Configurable with ICC modular connectors
- Flush mount style
- Durable ABS plastic
- Other colors available

H2-107F03WH (IC107F03WH)

- White

H2-107F03AL (IC107F03AL)

- Almond



4-Port Single Gang Faceplate, White

- Configurable with ICC modular connectors
- Flush mount style
- Durable ABS plastic
- Other colors available

H2-107F04WH (IC107F04WH)



6-Port Single Gang Faceplate, White

- Configurable with ICC modular connectors
- Flush mount style
- Durable ABS plastic
- Other colors available

H2-107F06WH (IC107F06WH)



12-Port Double Gang Faceplate, White

- Configurable with ICC modular connectors
- Durable ABS plastic
- Fits double gang mounting box
- Other colors available

H2-107F12WH (IC107F12WH)



Single Gang Blank Faceplate, White

- Designed to cover wall outlets until needed
- Flush mount style
- Durable ABS plastic
- Other colors available

H2-630EB0WH (IC630EB0WH)





Décorex™ Faceplate, Single Gang, White

- Consistent look with décor style switches
- Works with ICC Décorex Inserts
- Durable ABS plastic
- Other colors available

H2-107DFSWH (IC107DFSWH)



Video Wall Plate, Single Gang, White

- Gold plated female-to-female F-type connector
- Supports high quality video
- Durable ABS plastic
- Other colors available

H2-630EG0WH (IC630EG0WH)



Telephone Wall Plate 6P6C, White

- 6P6C with rear screw-down terminals
- Mounting standoffs for wall mounting telephones
- Durable ABS plastic
- Other colors available

H2-630DB6WH (IC630DB6WH)



1 Port QuickPort Single-Gang Wallplate

- Individual port configurability allows specification flexibility. Color-matched wallplate screws. Accepts QuickPort snap-in modules to support multimedia applications with 1 port. Available in white, light almond, ivory, gray, black and brown.

LV-410801WP (41080-1WP)

- White

LV-410801TP (41080-1TP)

- Light Almond



2 Port QuickPort Single-Gang Wallplate

- Individual port configurability allows specification flexibility. Color-matched wallplate screws. Accepts QuickPort snap-in modules to support multimedia applications with 2 ports. Available in white, light almond, ivory, gray, black and brown.

LV-410802WP (41080-2WP)



3 Port QuickPort Single-Gang Wallplate

- Individual port configurability allows specification flexibility. Color-matched wallplate screws. Accepts QuickPort snap-in modules to support multimedia applications with 3 ports. Available in white, light almond, ivory, gray, black and brown.

LV-410803WP (41080-3WP)



4 Port QuickPort Single-Gang Wallplate

- Individual port configurability allows specification flexibility. Color-matched wallplate screws. Accepts QuickPort snap-in modules to support multimedia applications with 4 ports. Available in white, light almond, ivory, gray, black and brown.

LV-410804WP (41080-4WP)



QuickPort® Flush Mount Wall Plate

- Single gang
- 6-port
- Available in 6 colors

LV-410806BP (41080-6BP)



1-Gang No Device Blank Wall Plate, Thermoplastic, White

- Standard size
- Thermoplastic nylon
- Box mount

LV-80714W (80714-W)





1-Gang Decora® Standard Wall Plate, White

- Accent wall covering with a wide selection of colors & finishes. Smooth face and rounded edges resist dust accumulation.
- Color-matched mounting screws supplied
- Mounting screws are preinstalled and captive

LV-80401W (80401-W)



Decora Video Wall Jack Assembly, White

- Wall Plate assemblies incl. Insert & matching Wall Plate. cULus listed & rated UL 94V-0.
- Includes a 1- or 2-port QuickPort® Decora Insert and USOC or F-type QuickPort Connectors

LV-80781W (40981-W)



The SCOOP™ Series Cable Entry Devices

- Protects cable from abrasion and organizes it into one neat bundle
- Allows easy insertion of cables or class 2 low voltage wiring

9N-CED130 (CED130)

- Non-metallic low voltage device with slotted cover, white

9N-CED130WP (CED130WP)

- With its own decorator-style wall plate



The SCOOP™ Brush-Style Cable Entrance Device

- Available with its own decorator-style wall plate
- Perfect for organizing and protecting low voltage cable. Brush-style opening.
- Allows easy insertion of cables or Class 2 low voltage wiring

9N-CED135 (CED135)

9N-CED135WP (CED135WP)

- With wall plate



The SCOOP™ Series Reversible Hoods

- White cable entrance hoods, vertical or horizontal, and reversible providing installation versatility
- Single-gang entrance hood for decorator plates
- Protects low voltage cable against damage

9N-CED1 (CED1)



The SCOOP™ Series Cable Entrance Plates

- Single-gang entrance hood for decorator-style wall plates. Easy to install facing IN or OUT.
- Non-rusting paintable white plastic
- 9N-CEDH1 available for horizontal application

9N-CE1 (CE1)

- With plate facing IN

9N-CE2 (CE2)

- With plate facing OUT



DATA COMM
ELECTRONICS



Recessed Low Voltage Cable Plate with Power

- Install low voltage cables and power behind a flat panel TV, amplifier or other audio/video devices, flush to the wall surface. Other colors available.
- Can be installed with the opening facing up or down

5F-450021WH (45-0021-WH)



DATA COMM
ELECTRONICS



2-Gang Recessed Low Voltage Cable Plate

- Install low voltage cables behind a flat panel TV, amplifier or other audio/video devices, flush to the wall surface
- Use 2-gang low voltage mounting plate bracket
- Can be installed with opening facing up or down

5F-450002WH (45-0002-WH)



DATA COMM
ELECTRONICS



1-Gang Recessed Low Voltage Cable Plate

- Install low voltage cables behind a flat panel TV, amplifier or other audio/video devices, flush to the wall surface
- Use a 1-gang low voltage mounting plate bracket

5F-450001WH (45-0001-WH)

- White

5F-450001LA (45-0001-LA)

- Light almond





White Décor Brush Plate with White Brush

- Brush allows for clean presentation
 - Gang brush inserts together to accommodate more cables
 - Screw hardware and wall plate included
- 9U-DBPWH** (DBPWH)



Single Gang White Splitport™ Recessed Plate

- Install plate after the cables are connected
 - Oversized plate to hide plaster imperfections
 - When mating half is assembled, the open hole is not exposed
- 9U-1GSRWH** (1GSRWH)



Single Gang White Splitport™ Plate

- Install plate after the cables are connected
 - Patented key-tab feature holds plate together
 - Attaches to standard single gang low voltage backless box
- 9U-1GSWH** (1GSWH)



Double Gang White Splitport™ Plate

- Install plate after the cables are connected
 - Patented key-tab feature holds plate together
 - Attaches to standard 2-gang low voltage backless box
- 9U-2GSWH** (2GSWH)



Single Gang White Wireport™ Plate

- Eliminate the need for plate connectors
 - Use where A/V cables pass through wall
 - Attaches to standard single gang low voltage backless box
- 9U-1GWH** (1GWH)



Double Gang White Wireport™ Plate

- Eliminate the need for plate connectors
 - Used where A/V cables pass through the wall
 - Attaches to standard 2-gang low voltage backless box
- 9U-2GWH** (2GWH)



Single Gang White Wireport™ with Grommet Plate

- Grommet covers pass through hole
 - Eliminate the need for plate connectors
 - Attaches to standard single gang low voltage backless box
- 9U-1GWHGR1** (1GWHGR1)



Double Gang White Wireport™ with Grommet Plate

- Grommet covers pass through hole
 - Attaches to standard 2-gang low voltage backless box
 - Eliminate the need for plate connectors
- 9U-2GWHGR2** (2GWHGR2)



SPEEDPORT™ - Universal Cable Pass Thru Anchor System

- Used for low voltage cable pass thru
 - Ultra low profile design, includes rubber grommet
 - Quick & simple installation using a 2" hole saw
- 9U-R1SPB** (R1SP-B)
9U-R1SPSCB
- Items hung on wall



SPEEDPORT™ - Universal Cable Pass Thru Anchor System

- Used for low voltage cable pass thru
- Ultra low profile design, includes rubber grommet
- Quick & simple installation using a 2" hole saw

9U-R1SPW (R1SP-W)

9U-R1SPSCW

- Items hung on wall



SPEEDPORT™ - Universal Cable Pass Thru Anchor System

- Used for low voltage cable pass thru
- Ultra low profile design, includes rubber grommet
- Quick & simple installation using a 2-3/8" hole saw. Pass more cables thru with this size.

9U-R2SPW (R2SP-W)



Decor Style Brush Bulk Cable Wall Plate - Single Gang, White

- Allows for multiple bulk cables to be organized, fits on a single gang electrical J-box or low voltage mounting box
- Opening approximately: 3/4" x 2-1/8"

ZX-120817X (120817X)



Screw On Low Voltage Mounting Brackets

- Install of low voltage Class 2 wiring in new construction
- Complete with screws parked-in-place ready to install. Single, 2-, 3-, & 4-gang styles black plastic.
- 10 pack

9N-LVS110 (LV51)



Steel Fixture Box Kit for Suspended Ceilings

- One-piece ready to install on 24" ceiling grid
- UL tested & listed to hold 50# fixture
- Saves labor costs vs. multi-piece assemblies
- Position box anywhere along bracket

9N-FS420SCL (FS420SCL)



Low Voltage Mounting Bracket for Class 2 Wiring

- Fast, easy and low-cost mounting of Class 2 wiring in existing construction
- Single, 2-, 3-, 4-gang, black plastic bracket
- Adjusts to fit 1/4" to 1" wall thicknesses

9N-LV1 (LV1)

• Single-gang

9N-LV2 (LV2)

• Two-gang



Low Voltage Mounting Bracket for New Work

- Permits use of 3/4" EMT
- Single-gang, works with 1/2" or 5/8" wallboard
- Two-gang, works with 1/2" or 5/8" wallboard

9N-LVH110 (LVH1)

• 10 pack

9N-LVH1K (LVH1K)

- Non-metallic, mounts vertical or horizontal on wood or metal stud



Nail On Low Voltage Mounting Brackets

- Single, 2-, 3-, and 4-gang styles, black plastic
- Lets wall plate mount flush with wall surface
- Installs Low Voltage, Class 2 wiring in new construction. Nails ship parked-in-place.

9N-LVN110 (LVN1)

• Single-gang. 10 pack.

9N-LVN205 (LVN2)

• Two-gang. 5 pack.



1-Port Surface Mount Box

- Two-piece design with removable cover
- Configurable with ICC modular connectors
- Mount on any flat surface
- Also available: 1, 2, 4, 6, and 12-ports

H2-107SB1WH (IC107SB1WH)

• White

H2-107SB1IV (IC107SB1IV)

• Ivory



**2-Port Surface Mount Box**

- Two-piece design with removable cover
- Configurable with ICC modular connectors
- Mount on any flat surface
- Also available: 1, 2, 4, 6, and 12-ports

H2-107SB2WH (IC107SB2WH)

- White
- H2-107SB2IV** (IC107SB2IV)
- Ivory

**Single Gang Mounting Box, White**

- Works with ICC faceplates, 1.89" Depth
- Same size as single NEMA electrical box
- Works with ICC raceway
- Durable ABS plastic

H2-107MRSWH (IC107MRSWH)**Surface Mount Box, RJ-11, 6P6C, White**

- Two piece design with removable cover
- 50 micro inch gold-plated screw down terminals
- Mount on any flat surface
- Other colors available

H2-625SB6WH (IC625SB6WH)**QuickPort® 2-Port Surface Mount Housing (with 1 Blank)**

- Small footprint for 1 & 2-port applications
- Product mounts with adhesive tape, screws or magnet
- Plenum rated
- Available in 4 colors

LV-410892WP (41089-2WP)**Décor Recessed Power Inlet**

- Feed power remotely to your wall mounted HDTV
- Gang together with keystone plates for custom combinations
- Power rating 15A, 125V, ETL certified

9U-4642W (4642W)**Power Jumper™ All-in-One HDTV Power Relocation Kit**

- Relocate power to wall mounted HDTVs & conceal A/V cables. Perfect for retro-fit construction projects.
- 1.5" recessed plug-in depth - Power Rating 15A, 125V

9U-22APJW7R (22APJW-7R)**Cat 5e EZ® Modular Connectors**

- 8-position, 8-conductor, RJ-45
- Easy single row pair-to-pair wiring
- 50 micro inch gold plated contacts
- 11 colors available

H2-1078E5OR (IC1078E5OR)

- Orange
- H2-1078E5WH** (IC1078E5WH)
- White

**Cat 5e EZ® Modular Connectors**

(continued)

H2-1078E5BL (IC1078E5BL)

- Blue
- H2-1078E5YL** (IC1078E5YL)
- Yellow

**Cat 5e HD Modular Couplers, Black**

- 8-position, 8-conductor, RJ-45
- Designed for voice and data applications
- Accepts RJ-45-to-RJ-45 Cat 5e patch cords
- No termination required

H2-107C5EBK (IC107C5EBK)



Cat 5e EZ® Modular Connectors

- 8-position, 8-conductor, RJ-45
- Rear split-back IDC
- 50 micro inch gold plated contacts
- 11 colors available

H2-1078F5WH (IC1078F5WH)

- White

H2-1078F5BL (IC1078F5BL)

- Blue



Cat 6 HD Modular Connectors

- 8-position, 8-conductor, RJ-45
- Rear split-back IDC
- 50 micro inch gold plated contacts
- 11 colors available

H2-1078F6WH (IC1078F6WH)

- White

H2-1078F6BL (IC1078F6BL)

- Blue



Cat 6 EZ® Modular Connectors

- 8-position, 8-conductor, RJ-45
- Easy single row pair-to-pair wiring
- 50 micro inch gold plated contacts
- 11 colors available

H2-1078L6WH (IC1078L6WH)

- White

H2-1078L6BL (IC1078L6BL)

- Blue

H2-1078L6IV (IC1078L6IV)

- Ivory



Blank Filler Port Insert HD, 10 Pack

- Designed to cover unused ports until needed
- Works with ICC faceplates
- Provides a flush and clean appearance
- Other colors available

H2-107BN0WH (IC107BN0WH)



Cat 5e EZ® Connector 25-Packs

- 8-position, 8-conductor, RJ-45
- Easy single row pair-to-pair wiring
- 50 micro inch gold plated contacts
- Other colors available

H2-107E5CWH (IC107E5CWH)

- White

H2-107E5CBL (IC107E5CBL)

- Blue



Telephone Coupler, RJ-45 8P8C Keyed

- 8-Position, 8-conductor, RJ-45, straight pin 1-1
- Supports Cat 3 data
- Accepts RJ-45-to-RJ-45 line cords
- No termination required

H2-MA3508DR (ICMA3508DR)



Voice HD Modular Connectors, White

- 6-position, 6-conductor, RJ-11
- Slim-line high density design
- 50 micro inch gold plated contacts
- Accepts 22 ~ 24 AWG solid wire

H2-1076F0WH (IC1076F0WH)



Voice EZ® Modular Connectors

- 6-position, 6-conductor, RJ-11
- Easy single row pair-to-pair wiring
- Accepts 22 ~ 24 AWG solid wire
- 50 micro inch gold plated contacts

H2-1076V0WH (IC1076V0WH)

- White

H2-1076V0AL (IC1076V0AL)

- Almond

H2-1076V0IV (IC1076V0IV)

- Ivory



Voice EZ® Connector 25-Packs

- 6-position, 6-conductor, RJ-11
- Easy single row pair-to-pair wiring
- 50 micro inch gold plated contacts
- Other colors available

H2-1076VCWH (IC1076VCWH)





2-Port Decorex™ Insert, White

- Works with Décorex faceplates
- Configurable with ICC modular connectors
- Other colors available

H2-107DI2WH (IC107DI2WH)



3-Port Decorex™ Insert, White

- Works with Décorex faceplates
- Configurable with ICC modular connectors
- Other colors available

H2-107DI3WH (IC107DI3WH)



4-Port HD Décorex™ Insert, White

- Works with Décorex faceplates
- Works with high density connectors only
- Configurable with ICC modular connectors
- Other colors available

H2-107DI4WH (IC107DI4WH)



6-Port HD Décorex™ Insert, White

- Works with Décorex faceplates
- Works with high density connectors only
- Configurable with ICC modular connectors
- Other colors available

H2-107DI6WH (IC107DI6WH)



Self-Terminating F-Connectors

- Re-sealable pack of 10 nickel F-Connectors
- Supports AnyPort application inserts
- Snap-in identification icons available
- Fits decorator-style faceplates
- Recessed hex nut does not allow

H4-WP3481W10 (WP3481- WH-10)



QuickPort Blanks

- Blank QuickPort Insert, White (sold in packs of 10). Blank Leviton QuickPort Inserts are designed to secure unused QuickPort openings, and provide protection from dust and debris. cULus Listed (UL 1863, CAN/CSA-C22.2 No. 182.4-1990)

LV-41084BW (41084-BW)



USOC QuickPort® Snap-In Connector, 6-Conductor, White

- Cutting ledge combines termination & trim into 1 step
- Individual-port configurability allows specification flexibility. Robust one-piece lead-frame design.

LV-41106RW6 (41106-RW6)



GigaMax® Cat 5e QuickPort Connector, White

- Robust 1-piece lead-frame design
- T568 A/B wiring labels simplify installation
- Available in 13 colors

LV-5G108RW5 (5G108-RW5)



eXtreme® Cat 6 QuickPort® Connector

- Patented "Retention Force Technology" (RFT)
- Compatible with all QuickPort openings
- Faster termination because of pair separators
- Patented dual-level wiring guide label
- Blue

LV-61110RL6 (61110-RL6)





eXtremeCat 6 QuickPort

- Patented "Retention Force" technology. Compatible with all QuickPort openings. Faster termination because of pair separators. Patented dual-level wiring guide label. Available in 13 colors.

LV-61110RW6 (61110-RW6)



QuickPort® F-Type Adapter

- Nickel-plated
- White
- Available in 6 colors

LV-41084FWF (41084-FWF)



2-Port Decora® Multimedia Inserts

- Supports voice, data, and A/V applications
- High port density mounts flush
- Available in 6 colors
- Available in 1, 2, 3, 4, and 6 ports

LV-41642W (41642-W)



Configurable Blank Patch Panel

- 24 blank ports
- Works with EZ modular connectors
- Steel frame
- 1 rack mount space

H2-107BE241 (IC107BE241)



12-Port Cat 6/5e Wall Mount Patch Panels with 89D Mounting Bracket

- 50 micro inch gold plated contacts
- H2-MPP12V60** (ICMPP12V60)
 - Cat 6
- H2-MPP1260V** (ICMPP1260V)
 - Cat 6 6-Pack ValuePack
- H2-MPP12V5E** (ICMPP12V5E)
 - Cat 5e
- H2-MPP125EV** (ICMPP125EV)
 - Cat 5e 6-Pack ValuePack



24-Port HD Blank Patch Panel, 1 RMS

- 24 blank ports
- Works with HD modular connectors
- Steel frame
- 1 rack mount space

H2-107BP241 (IC107BP241)



48-Port HD Blank Patch Panel, 2 RMS

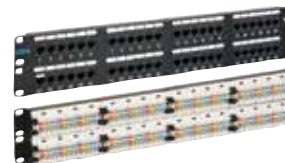
- 48 blank ports
- Works with HD modular connectors
- Steel frame
- 2 rack mount spaces

H2-107BP482 (IC107BP482)



24-Port Cat 6/5e Patch Panels, 1 RMS, Rear 110-Type Termination

- 50 micro inch gold plated contacts
- H2-MPP02460** (ICMPP02460)
 - Cat 6
- H2-MPP2460V** (ICMPP2460V)
 - Cat 6 6-Pack ValuePack
- H2-MPP0245E** (ICMPP0245E)
 - Cat 5e
- H2-MPP245EV** (ICMPP245EV)
 - Cat 5e 6-Pack ValuePack



48-Port Cat 6/5e Patch Panels, 2 RMS, Rear 110-Type Termination

- 50 micro inch gold plated contacts
- H2-MPP04860** (ICMPP04860)
 - Cat 6
- H2-MPP4860V** (ICMPP4860V)
 - Cat 6 6-Pack ValuePack
- H2-MPP0485E** (ICMPP0485E)
 - Cat 5e
- H2-MPP485EV** (ICMPP485EV)
 - Cat 5e 6-Pack ValuePack



50-Pair 66 Wiring Block

- Designed for voice applications
- High impact flame retardant material UL 94V-0
- Wall mountable
- Route cable behind; 89B bracket H2-MB89B0WH

H2-066NB050 (IC066NB050)



66B Series Connecting Blocks

- Molded from flame retardant thermoplastic
- Standard 66-type connector clips (4 clips x 50 rows)
- Includes two 25-pair designation strips

Y4-66M150C5 (66M1-50-C5)



24-Port Cat 6 Unshielded Patch Panel

- Gigabit ready rack mount 24-port panel
- Cat 6 patch panels deliver a steady 250 MHz connection to copper Gigabit switches
- Ideal solution for Ethernet, Fast Ethernet and Gigabit applications

TQ-TCP24C6 (TC-P24C6)



24-Port Cat 5/5e Unshielded Patch Panel

- Rack mount 24-port Gigabit ready panel
- Cat 5e patch panels deliver a steady 100 MHz connection to copper Gigabit switches
- Ideal solution for Ethernet, Fast Ethernet and Gigabit applications

TQ-TCP24C5E (TC-P24C5E)



Mounting Bracket

- Snaps on the rear of 66 wiring blocks
- Open rear
- 10" H x 1.87" D

H2-MB89B0WH (ICMB89B0WH)

• 89B, 3.20" width

H2-MB89D0WH (ICMB89D0WH)

• 89D, 3.32" width



Wall Mount Hinged Bracket - 6" Depth, 1 RMS

- 16 gauge steel construction
- 10 lb. capacity
- 1.75" H x 19.31" W x 6" D

H2-CMSHB1RS (ICCMSHB1RS)



Wall Mount Hinged Bracket - 6" Depth, 2 RMS

- 16 gauge steel construction
- 20 lb. capacity
- 3.5" H x 19.31" W x 6" D

H2-CMSHB2RS (ICCMSHB2RS)



Wall Mount Rack, 18" Depth

- Heavy duty steel construction
- 125 lb. capacity
- 17.75" H x 19.75" W x 18" D
- Also available in 15 and 30 RMS

H2-CMSWMR08 (ICCMSWMR08)

