

LED 3-COMPLETE



The new 3-in-one modular dimmable LED undercabinet fixture with switchable color temperatures, a low profile housing and glare-free acrylic lens.

Performance

- Dimmable with most standard 2-wire and CL dimmers with 5-100% light output (minimum loads will apply)
- Micro switch on housing can be set to 2400K, 3000K or 4000K CCT (correlated color temperature)
- High CRI (90+) for all CCTs
- Low profile housing hides easily – less than 1" high
- SMD 5630 LEDs offer long 35,000 hours rated life

Construction

- Powder coated aluminum housing is sturdy and durable
- Full length acrylic lens diffuses light evenly over the work area
- Multiple connection points hold PC board firmly against heat sink, optimizing heat dissipation and extending LED life

Installation

- Mount to underside of shelf or cabinet, at the leading edge, for best performance
- Modular design with hardwire junction boxes, power cords and linking cables sold separately offers maximum flexibility and optimal fixture placement
- Quick access door speeds hardwire installations by eliminating the need to open the wiring compartment
- Captive screws and quick stab wire connectors allow quick mounting and wiring



Specifications

Series	3LC
Input voltage	120V AC, 60Hz
Color temperature	2400K, 3000K or 4000K
CRI	90+
Wattage	6W / 10W / 14W / 16W
Lumens	See individual product
Maximum run	150 watts
Beam angle	106°
Dimming	ELV dimmers
Housing	Extruded aluminum
Lens	Full length extruded acrylic
Rating	c/ETL/us Listed, dry locations
Dimensions	3-5/8"W x 15/16"H x Length
Power input	Hardwire, modular or plug-in
Mounting	Captive screws
Linking	Via inline connector (incl) or jumpers
LED type	5630 SMD
Rated life	35,000 hrs

Building a System

Determine Layout:

Determine the quantities and lengths of fixtures needed.

Determine power input:

1. Hardwire via knockouts
2. Modular with junction box
3. Plug-in

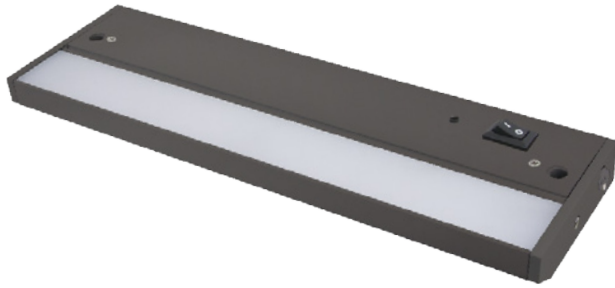
Select Power Input Accessories:

1. Hardwire via knockouts: no additional accessories needed
2. Modular with junction box: use ALC-BOX with 12" jumper
3. Plug-in: use ALC-PC6, one per fixture or one for first fixture and link subsequent

Select Linking Accessories:

1. Direct end-to-end: no additional accessories needed
2. Linking cables: Choose 6" or 12" jumpers (ALC-EX cables)

LED 3-Complete



LED 3-Complete - Dark Bronze

3LC-8-DB

8" / 6W / up to 350Lm

3LC-16-DB

16" / 10W / up to 891Lm

3LC-24-DB

24" / 14W / up to 922Lm

3LC-32-DB

32" / 16W / up to 951Lm



LED 3-Complete - White

3LC-8-WH

8" / 6W / up to 449Lm

3LC-16-WH

16" / 10W / up to 904Lm

3LC-24-WH

24" / 14W / up to 1035Lm

3LC-32-WH

32" / 16W / up to 1190Lm

Each fixture includes (1) 3/8" clamp connector, (1) inline/direct connector, (2) captive mounting screws and (2) mounting hole covers

LED 3-Complete Accessories



ALC-BOX-WH (White)

ALC-BOX-DB (Dark Bronze)

Hardwire junction box with power connection ports at each end, six 3/8" knockout locations, and On/Off rocker switch
c/ETL/us Listed for indoor use
6-3/8"L x 3-5/8"W x 1"H



ALC-PC6-WH (White)

ALC-PC6-BK (Black)

6ft 120V AC power cord with 3-prong grounded plug and power connector
Power input side for PC6 is at end opposite from switches



ALC-EX6-BK 6"

ALC-EX12-BK 12"

Jumper (linking) cables for LED 3-Complete with male/female connectors



ALC-EX6-WH 6"

ALC-EX12-WH 12"

Jumper (linking) cables for LED 3-Complete with male/female connectors