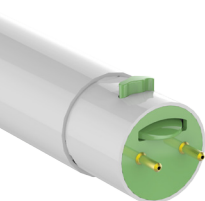


TOTALtUBE G2® T8 BALLAST COMPATIBLE & LINE VOLTAGE | PLUG & PLAY



The RemPhos 2nd Generation TOTALtUBE G2® is now the safest, most efficient, and longest warranty LED lamp on the market. Over 140 lumens per watt. Our smart internal driver is compatible with most fluorescent ballasts or remove the ballast all-together and power directly with 120-277V AC line voltage for 7 years of maintenance free operation. Compliant with UL's new for 2016: Type A + Type B LED tube standards. First to market with our patent-pending SMARTSENSE-TLED® intelligent switching system which provides the safest possible installation that prevents any risk of electricity flowing from one end of the tube to the other before all 4 switches are pressed in. The switch also prevents against "socket to lamp pin" electrical arcing. Integrated SMARTSENSE® fused thermal protection to prevent any overheating. Light is emitted >240° through a diffused lens cover to provide both direct and indirect glare-free and completely uniform illumination (you will not see any LED spots). Backed up by RemPhos' extensive and reliable history of manufacturing. Available in 24in, 36in and 48in (normal, medium: MO or high output: HO). Check ballast for dimming compatibility. Non dimmable on line voltage.



PROJECT NAME

PART NUMBER

PART NUMBER BUILDER

MANUFACTURER	MODEL NUMBER	LAMP STYLE	LENGTH	COLOR TEMPERATURE
RPT	TOTALtUBEG2	T8		
	TOTALtUBEMOG2*		24IN	3000K
	TOTALtUBEHOG2*		36IN	3500K
			48IN	4000K
			24INU	5000K

ORDERING EXAMPLE

RPT-TOTALTUBEG2-T8-48IN-4000K * 48IN only

INSTALLATION GUIDE

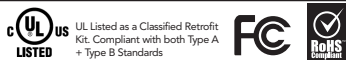
- Turn off circuit breaker that supplies power to the fixture. Remove lens or diffusion cover on the lighting fixture. Remove existing fluorescent tube. Remove ballast if wiring LED tube to line voltage.
- Install TOTALtUBE. If wiring to line voltage, DOUBLE ENDED power is acceptable. Shunted or Non-shunted lamp holders can be utilized.
- Once LED tube is properly twisted into position, the SMARTSENSE®-TLED switch STEP 1 is complete. Press the SMARTSENSE-TLED® switches labeled STEP 2. Electricity will not flow through lamp until all switches are pressed in.
- Apply Caution label to a visible spot on the fixture. Replace lens and turn on your lights!

Simplified instructions. Reference full installation guide for more details. Only qualified personnel should perform installation.

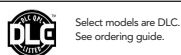
QUICK SPECS

INPUT VOLTAGE	120-277V AC or Fluorescent Ballast
EFFICACY	140 lumens/watt
OPERATING TEMP	-30°C to 45°C
MAX CASE TEMP	50°C
POWER FACTOR/THD	>0.90 Power Factor, THD<10%
CRI	83+
BEAM ANGLE SPREAD	>240° provides direct and indirect
RATED LIFE	L70 LED Lifetime > 80,000 hrs
WARRANTY	7 years/60,000 hrs

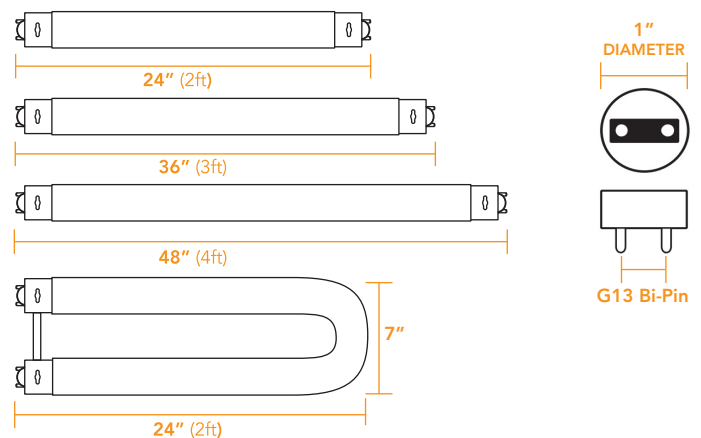
CERTIFICATIONS



PERFORMANCE LISTINGS



DIMENSIONS



TOTALtUBE G2® T8 BALLAST COMPATIBLE & LINE VOLTAGE | PLUG & PLAY

ORDERING GUIDE

CASE QTY	ENERGY STAR	DLC	PART #	LUMEN OUTPUT (LM)	WATTAGE (W)	CCT (K)	VOLTAGE RANGE (V AC)	WARRANTY (YRS)	TRADITIONAL EQUIVALENT	WATTS SAVED (W)
25		●	RPT-TOTALTUBEG2-T8-24IN-XXXXK	1250	9	XXXX	120-277*	7	20W T8 FL	11
25			RPT-TOTALTUBEG2-T8-36IN-XXXXK	1700	12	XXXX	120-277*	7	25W T8 FL	13
25		●	RPT-TOTALTUBEG2-T8-48IN-XXXXK	1700	12	XXXX	120-277*	7	32W T8 FL	20
25		●	RPT-TOTALTUBEMOG2-T8-48IN-XXXXK	1950	14	XXXX	120-277*	7	32W T8 FL	18
25		●	RPT-TOTALTUBEHOG2-T8-48IN-XXXXK	2250	16	XXXX	120-277*	7	32W T8 FL	16
25			RPT-TOTALTUBEG2-T8-24INU-XXXXK	1700	12	XXXX	120-277*	7	40W T8 FL	28

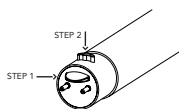
XXXX = 3000, 3500, 4000, or 5000

* 120-277 V AC or Fluorescent ballast

WATTAGE AND LUMEN OUTPUT INFORMATION

PART #	BALLAST TYPE	BALLAST FACTOR	LAMP WATTAGE	SYSTEM WATTAGE*	LAMP LUMENS
RPT-TOTALTUBEG2-T8-24IN	Line Voltage (120-277V AC)	NA	9W	9W	1250LM
	Instant Start	Normal 0.88	9W	12.5W	1250LM
	Instant Start	Low 0.78	7.2W	9.8W	975LM
	Instant Start	High 1.18	12.4W	16.0W	1700LM
RPT-TOTALTUBEG2-T8-36IN	Line Voltage (120-277V AC)	NA	12W	12W	1700LM
	Instant Start	Normal 0.88	12W	15W	1700LM
	Instant Start	Low 0.78	9.6W	11.7W	1310LM
	Instant Start	High 1.18	16.6W	19.2W	2150LM
RPT-TOTALTUBEG2-T8-48IN	Line Voltage (120-277V AC)	NA	12W	12W	1700LM
	Instant Start	Normal 0.88	12W	15W	1700LM
	Instant Start	Low 0.78	9.6W	11.7W	1310LM
	Instant Start	High 1.18	16.6W	19.2W	2150LM
RPT-TOTALTUBEMOG2-T8-48IN	Line Voltage (120-277V AC)	NA	14W	14W	1950LM
	Instant Start	Normal 0.88	14W	16.9W	1950LM
	Instant Start	Low 0.78	11.2W	13.2W	1520LM
	Instant Start	High 1.18	19.3W	21.7W	2496LM
RPT-TOTALTUBEHOG2-T8-48IN	Line Voltage (120-277V AC)	NA	16W	16W	2250LM
	Instant Start	Normal 0.88	16W	18.4W	2250LM
	Instant Start	Low 0.78	12.8W	14.4W	1750LM
	Instant Start	High 1.18	22.1W	23.6W	2880LM
RPT-TOTALTUBEG2-T8-24INU	Line Voltage (120-277V AC)	NA	12W	12W	1700LM
	Instant Start	Normal 0.88	12W	15W	1700LM
	Instant Start	Low 0.78	9.6W	11.7W	1310LM
	Instant Start	High 1.18	16.6W	19.2W	2150LM

* Wattage is calculated by measuring the average system wattage for a single LED tube including ballast. Average system wattage was measured at 120V and 277V with multiple ballasts from Philips, Sylvania, OSRAM, GE, Keystone, Sunpark, Howard. See table with actual test results for more detailed information on performance with specific ballasts.



The SMARTSENSE®-TLED Switch is designed to allow the LED tube to be installed into a fixture wired for double sided line voltage power. The switch ensures that no electricity is able to flow from one end of the tube to the other before all 4 switches are pressed in. Wiring the fixture to double sided line voltage power (opposed to single sided) ensures that if maintenance personnel ever attempts to reinstall a fluorescent lamp into the sockets wired for line voltage, the fluorescent lamp will simply not illuminate. There are no safety concerns.

Printed on paper that is FSC® Certified, SFI® Certified Sourcing and Rainforest Alliance Certified™. 10% post-consumer recycled content and certified fiber; it's the optimal environmental choice, because RemPhos cares.

RemPhos
TECHNOLOGIES