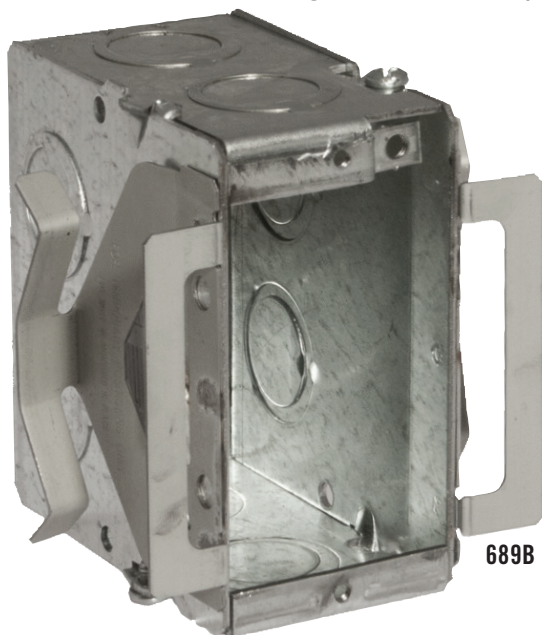


RACO® BLOCK-LOC® MASONRY BOXES

RACO is introducing this new line of self-positioning masonry boxes and tile covers designed to lock into position and hold during the construction process.



689B



Application

For power and data outlets in masonry block walls.

Features

- Available in 3-1/2" deep, 1 through 4 gang welded, and gangable masonry boxes
- Available in 4" sq. 2" deep 1 and 2 gang tile covers
- Available in 4-11/16" sq. 2" deep 1 and single gang tile covers (899B)
- Integral brackets securely hold power and data outlets to concrete block from front and back in masonry block walls, even in irregular cut openings
- Made from durable, galvanized steel
- Quick and accurate positioning
- Break off front tabs
- UL listed
- Patent Pending
- Made in North America



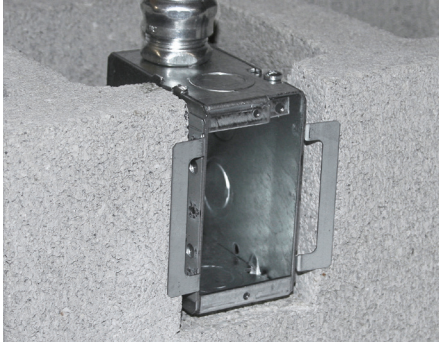
SCAN FOR THE HUBBELL
HOW-TO VIDEO



Catalog No.	Description	Cu. In. Capacity	Carton Qty.	Carton Dims. L x W x H	Conduit Knockouts			UPC-A Bar Code
					Sides	Ends	Bottom	
689B	3-1/2" Deep Single-Gang, Gangable	22.5	18	21" x 8.38" x 7.63"	4 TKO	2 TKO	2 TKO	050169500613
695B	3-1/2" Deep Single-Gang, Welded	22.5	18	21" x 8.38" x 7.63"	4 Conc.	4 Conc.	2 Conc.	050169500620
696B	3-1/2" Deep Two-Gang, Welded	45.0	12	11.38" x 10.63" x 8.25"	4 Conc.	8 Conc.	4 Conc.	050169500637
697B	3-1/2" Deep Three-Gang, Welded	67.3	12	14.5" x 10.88" x 8.25"	4 Conc.	12 Conc.	3 Conc.	050169500644
698B	3-1/2" Deep Four-Gang, Welded	89.8	6	11.38" x 10" x 8.5"	4 Conc.	16 Conc.	4 Conc.	050169500651
786B	4" Sq. Single-Gang Tile Cover, 2" Deep	14.5	25	11" x 10.75" x 8.63"	—	—	—	050169500668
796B	4" Sq. Two-Gang Tile Cover, 2" Deep	20.5	20	11" x 10.75" x 8.63"	—	—	—	050169500675
899B	4-11/16" Sq. Single-Gang Tile Cover, 2" Deep (Not UL Listed)	16.0	12	12.63" x 8.5" x 5.5"	—	—	—	050169500682

US Patent Pending

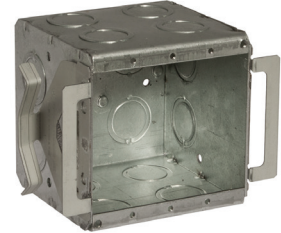
Call your local sales agent for more information on all the
BLOCK-LOC® products.



689B



695B



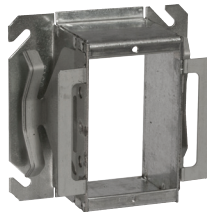
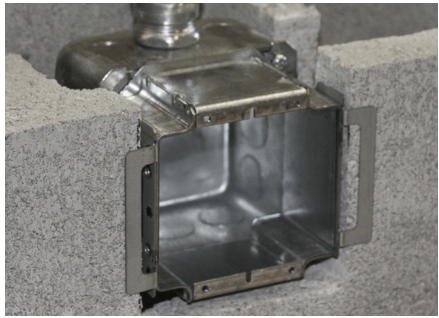
696B



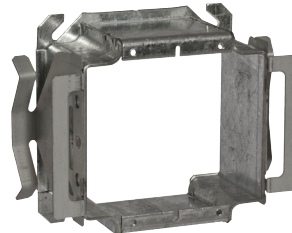
697B



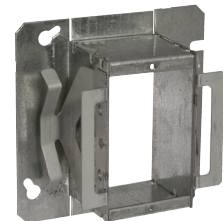
698B



786B



796B



899B