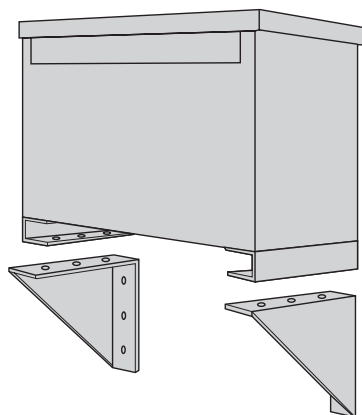


Wall Mounting Brackets



Required on:

Ventilated Units:

1Ø, 37.5 and 50 KVA
3Ø, 30, 45 and 75 KVA

Catalog Number: PL-79912

Encapsulated Units:

3Ø dit., 11 KVA — 20 KVA
3Ø std. distribution — 15 KVA

Catalog Number: PL-79911

Wall mounting brackets are not required on:

1Ø units — 25 KVA and below
3Ø units — 9 KVA and below

Standard Taps

The catalog number suffix provides tap information as outlined in chart below:

If the catalog number has no suffix, there are no taps available.

EXAMPLE: T-2-53019-3S

The suffix 3S indicates the unit has two 2.5% (+) ANFC taps and four 2.5% (-) BNFC taps.

Suffix	Tap Arrangement
- 1S	Two 5% (-) BNFC Taps
- 2S	One 5% (+) ANFC Tap and One 5% (-) BNFC Tap
- 3S	Two 2-1/2% (+) ANFC Taps and Four 2-1/2% (-) BNFC Taps
- 4S	Two 2-1/2% (+) ANFC Taps and Two 2-1/2% (-) BNFC Taps
- 5S	Two 5% (+) ANFC Taps and Two 5% (-) BNFC Taps

Thermal Switch Kits

Acme Thermal Switch Kits are designed for use with single and three phase drive isolation and distribution transformers. Thermal switch kits are available for one or three sensor systems.

Thermal sensors can be field or factory installed in the transformer winding ducts to detect abnormal temperatures. The thermal sensors are a normally closed contact that opens at $200^{\circ}\text{C} \pm 10^{\circ}\text{C}$ and has a current capacity of 5 amps @ 120V or 2.5 amps @ 240V. This contact can activate any number of different types of alarms or mechanisms that could warn of a potential failure.

Catalog Number: PL-79900

KVA	Mounting Position	Illustration
27.0 - 220.0	Bottom of the case	Figure 1
275.0 - 750	Top Flange of the Core Bracket	Figure 2

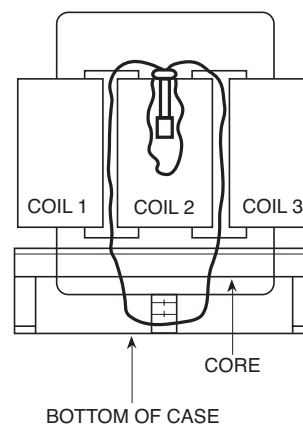


Figure 1

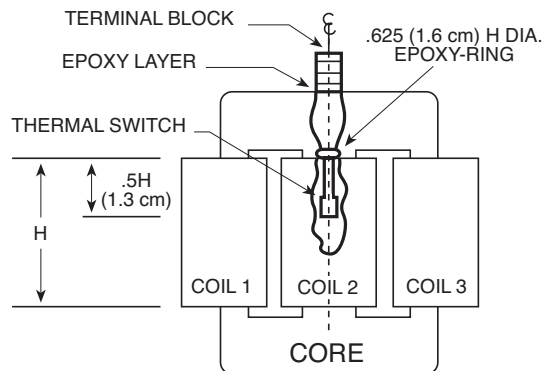


Figure 2