

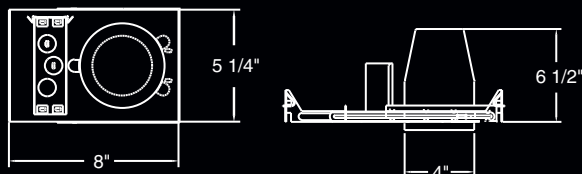
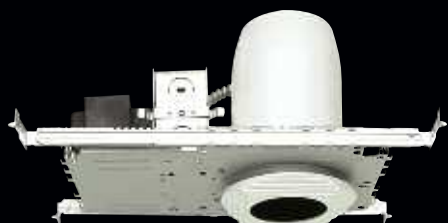
EL1499-75, **NEW!** EL1499A-75, EL1499-75-277

Low Voltage Housing

Height: 6 1/2" - Ceiling Opening: 4 1/4"

Lamp: 12V-75W-MR16

- Small aperture low voltage housing
- Integral thermal protector guards against misuse of insulation materials and improper lamping.
- Integral magnetic 75W transformer steps line voltage down to lamp operating voltage.
- Junction box is listed for through branch circuit wiring and has 1/2" knockouts with true pryout slots.



- Captive bar hangers span 24" joists and can be repositioned 90°.
- 6 1/2" height allows for use in 2 x 8 construction.
- Housing can be removed from plater frame for junction box access.
- U.L. Damp Location Listed
- U.L. Feed Through Listed
- A= ASTM Airtight Fixture

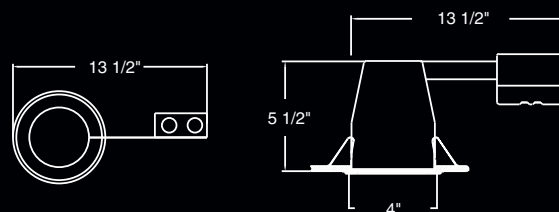
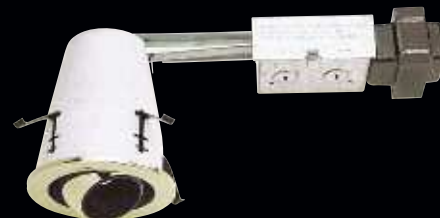
EL1499R, **NEW!** EL1499RA, **NEW!** EL1499REA, EL1499R-277

Low Voltage Remodel Housing

Height: 5 1/2" - Ceiling Opening: 4 1/4"

Lamp: 12V50W-MR16

- Small aperture low voltage remodel housing
- Integral thermal protector guards against misuse of insulation materials and improper lamping.
- Integral magnetic transformer steps line voltage down to lamp operating voltage.
- Junction box listed for 90° supply wire.



- 5 1/2" height allows use in 2 x 6 construction.
- Unit slips through 4 1/4" opening.
- Integral Flange secures housing against ceiling.
- Four remodel clips secure housing and accommodate various ceiling thickness.
- U.L. Damp Location Listed
- U.L. Feed Through Listed
- A= ASTM Airtight Fixture
- EL1499REA Includes electronic transformer

EL1499R-75, EL1499RA-75 **NEW!** EL1499R75-27

Low Voltage Remodel Housing

Height: 6 1/2" - Ceiling Opening: 4 1/4"

Lamp: 12V-75W-MR16

- Small aperture low voltage remodel housing
- Integral thermal protector guards against misuse of insulation materials and improper lamping.
- Integral magnetic transformer steps line voltage down to lamp operating voltage.
- Junction box listed for 90° supply wire.

- 6 1/2" height allows use in 2 x 8 construction.
- Unit slips through 4 1/4" opening.
- Integral Flange secures housing against ceiling.
- Four remodel clips secure housing and accommodate various ceiling thickness.
- U.L. Damp Location Listed
- U.L. Feed Through Listed
- A= ASTM Airtight Fixture

