

# Increase home sales value by 3%

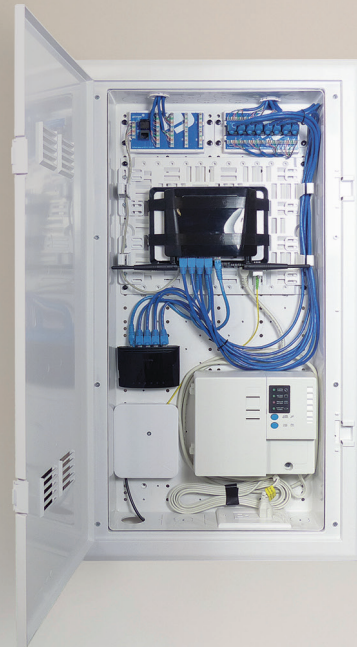
## Increase rental value by 8%

Homeowners want an advanced communications infrastructure. The modern family is streaming video, online gaming, on social media, using multiple devices, all at the same time.

High-speed access is now just as important as having a washer and dryer. As households demand more data, service providers will need to innovate to keep up with customers' fast growing need for more bandwidth.

Enter Fiber – the modern solution for complete and seamless connectivity of the modern home.

Welcome fiber inside



WiFi transparent enclosures  
for the well-connected home



[www.primex.com](http://www.primex.com)

# VERGE

# WiFi transparent enclosures that fit your needs

## The standard for the well-connected home.

Primex Media Distribution Enclosures (MDE's) help bring fiber inside. They provide a convenient and centralized location for easy installation and distribution of multi-play services within residential and commercial premises.

## Components and Accessories

Primex now offers a selection of components and accessories for the connected home. From modules to fiber management, get the signal from the MDE to your client's computer, phone, TV and other home devices.

Everything you need to bring fiber inside... from the supplier you trust.



### F-Connector Jack

125-0961 F-connector 3GHz keystone



### SC/APC Jack

125-0908 SC/APC Keystone w/shutter



### Cat5e Jacks

125-0949-WT Cat5e, 110 IDC, 90° HD  
125-0948-WT Cat5e, 110 IDC, 180° HD



### Cat6 Jacks

125-0947-WT Cat6, 110 IDC, 90° HD  
125-0946-WT Cat6, 110 IDC, 180° HD



### 3 Line Voice Jack

125-0959-WT 3-line voice, HD



### Surface Mount Port

125-0962-WT Surface mount box, 1-port  
125-0963-WT Surface mount box, 2-port  
125-0911 Surface mount box, 4-port



### Wall Plates

125-0957-WT Single-gang wall plate, 1-port  
125-0958-WT Single-gang wall plate, 2-port  
125-0955-WT Single-gang wall plate, 3-port  
125-0956-WT Single-gang wall plate, 4-port

\*Oversize wall plates also available



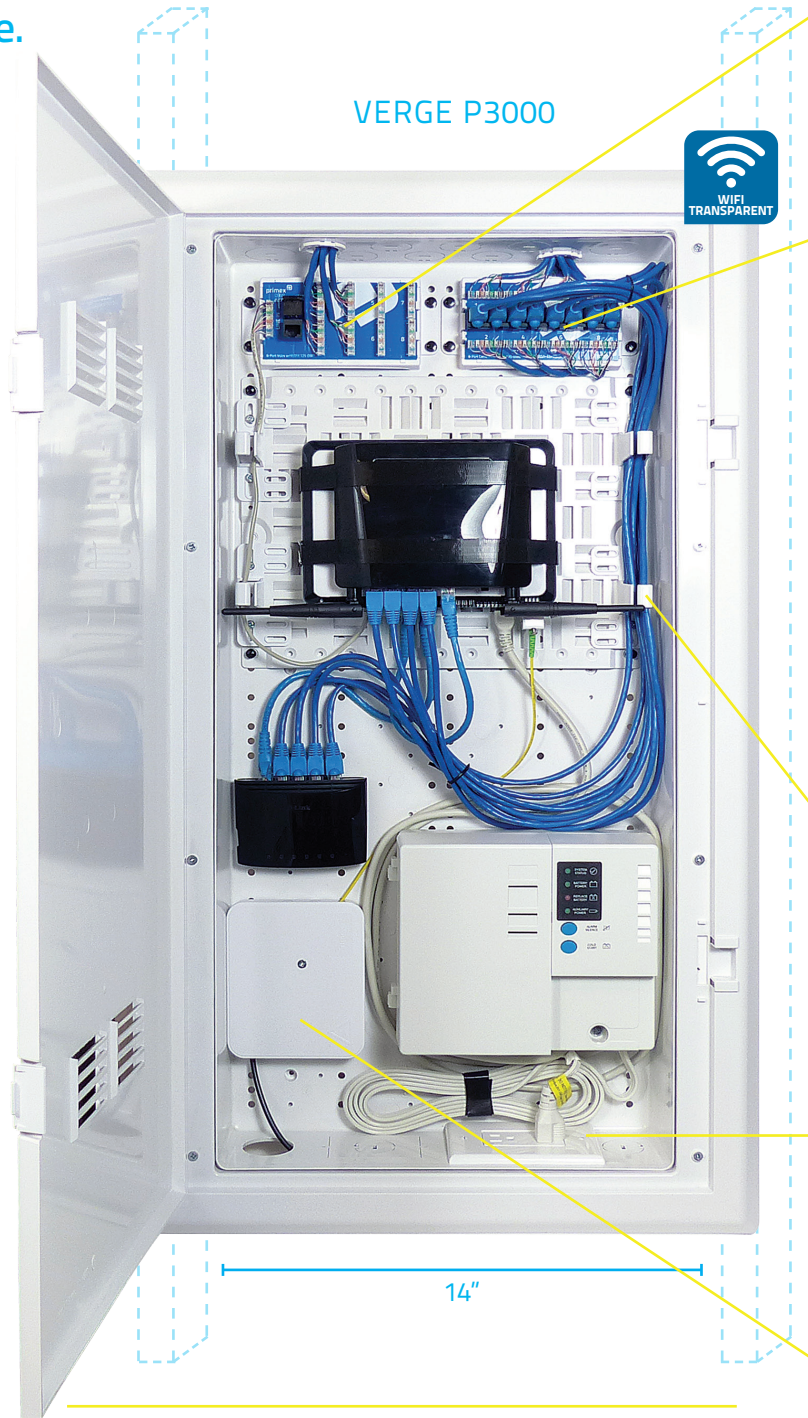
### Modular Wall Plate Inserts

125-0951-WT Modular wall plate insert, 1-port  
125-0952-WT Modular wall plate insert, 2-port  
125-0953-WT Modular wall plate insert, 3-port  
125-0954-WT Modular wall plate insert, 4-port  
125-0950-WT Modular wall plate



### Extension Bracket

125-1272 MDE Bracket



## Verge Media Distribution Enclosures (MDE)

125-1188	P2100 21" Enclosure Base & Hinged Lid
125-0997	P2100 21" Enclosure Base
125-0995	P2100 21" Enclosure Hinged Lid
125-0990	P3000 30" Enclosure Base & Hinged Lid
125-0571	P3000 30" Enclosure Base
125-0992	P3000 30" Enclosure Hinged Lid
125-1265	P3000 30" Enclosure Narrow Base & Hinged Lid
125-1212	P4200 42" Enclosure Base & Hinged Lid
125-0993	P4200 42" Enclosure Base
125-0998	P4200 42" Enclosure Hinged Lid



Narrow frame



Standard frame



Installation Video







### Data/Voice Module

Eight RJ45 data input jacks and eight 4-pair 110 IDC's for output provide robust data and voice distribution.

- 125-0986 8-Port Cat5e Data/Voice Module
- 125-1035 8-Port Cat6 Data/Voice Module



### Voice Module

8-port voice module for tel/fax termination points and an integrated RJ31x jack for security system line seizure.

- 125-0987 8-Port Voice Module w/RJ31x



### Conduit Adapters (Reducers)

Quick and easy snap-in installation adapter for conduit installation in Primex Media Distribution Enclosures.

- 125-1022 3/4" - 1/2" reducer
- 125-0936 1" - 3/4" reducer



### Fiber Spool (Spider Spool)

The Spider Spool is designed to route, manage and store fiber.

- 125-0932 Hinged Fiber Spool 3" ABS - Short Legs
- 125-0933 Fiber Spool 3" ABS - Short Legs
- 125-0931 Hinged Fiber Spool 3" ABS - Long Legs
- 125-0934 Fiber Spool 3" ABS - Long Legs



### Cable Management Clip (Hurricane Clip)

The Hurricane Clip is a durable, multi-purpose accessory that provides quick, secure installation and management of drop cable.

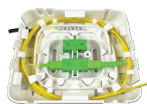
- 125-0239 White ABS fiber clip



### Electrical Kit

Features a gang box, outlet, faceplate, Romex connector and 4 conduit adapters for the knockouts on Primex MDE's.

- 125-1355 Electrical Kit



### Fiber Transition Outlet (FTO)

The Primex Fiber Transition Outlet (FTO) is a quick-splice solution that manages up to 3' of fiber drop cable.

- 125-0885 White FTO w/2 SC/APC adapters
- 125-0889 White FTO w/1 SC/APC adapter



### Fiber Transition Case (FTC)

The FTC is an efficient and adaptable solution for storing up to 3' of fiber drop cable and a simplex connector.

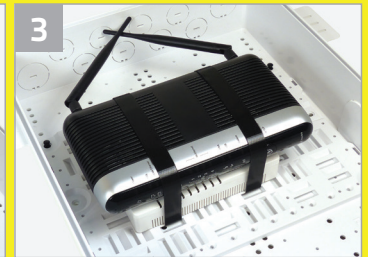
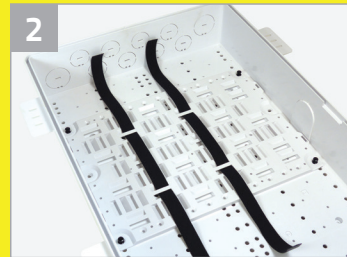
- 125-0873 White ABS w/1 SC/APC Adapter

## Two Mounting Systems

Primex now offers two component mounting options for a modem, ONT, UPS and other related equipment.

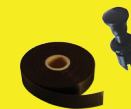
### Universal Mounting System (UMS)

The UMP combined with mounting tape offers versatile mounting options for telecom components.



### Universal Mounting Plate (UMP)

- 125-0770 White mounting plate

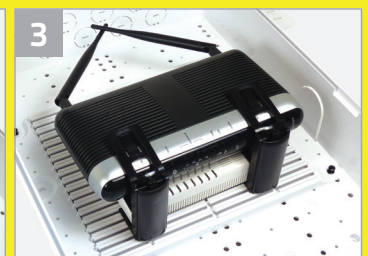
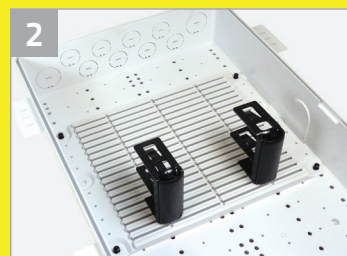
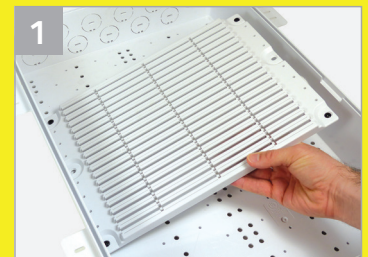


### Mounting Tape and Pushpins

- 125-0779 33' roll of mounting tape (10m)
- 125-0829 Mounting plate pushpins (100/bag)

### Rail Mounting System (RMS)

The RMP combined with mounting brackets offers the quick and easy installation of telecom components.



### Rail Mounting Plate (RMP)

- 125-1164 Rail mounting plate (7")
- 125-1165 Rail mounting plate (10")



### Rail Mount Bracket (RMB)

- 125-1213 6 pack for RMP



### Dual Rail Mount Bracket (RMB-2)

- 125-1214 6 pack for RMP



### Rail Mount Keyhole (RMK)

- 125-1338 Keyhole mount for RMP



P3000

**Primex Media  
Distribution Enclosures**



**High Speed  
Internet Access**



**Improve Your  
Bottom Line**



Research has shown that Fiber To The Home can increase a home's sale value by as much as 3% and rental value by up to 8%.

Now developers can add more value to their unit, while future-proofing it and providing a fast and clean installation with a small footprint.

With Primex Media Distribution Enclosures, they get the high-speed access they need – and you improve your bottom line.

- ✓ Over 600,000 installations
- ✓ WiFi Transparent
- ✓ Supply chain security
- ✓ Add more value to unit
- ✓ Fast, clean installations
- ✓ Small footprint
- ✓ Made in North America

## Welcome Fiber

Today's connected homes are fiber based, and Primex has what you need to move it inside.



[www.primex.com](http://www.primex.com)

1.877.881.7875 or 1.604.881.7875

Primex Manufacturing Ltd. © 2017 Product specifications are subject to change.