



# JUNO HD COMMERCIAL TRAC

120V, 2-Circuit/2-Neutral Trac System

## TRAC SECTIONS, JOINERS, FEEDS, ACCESSORIES & FIXTURES

TEK Series

Project: \_\_\_\_\_

Fixture Type: \_\_\_\_\_

Location: \_\_\_\_\_

Contact/Phone: \_\_\_\_\_

### PRODUCT DESCRIPTION

Juno HD Commercial 2-Circuit/2-Neutral Trac is ideal for dimming intensive applications. The independent neutrals guarantee that the two circuits are completely isolated. The potential for cross-circuit interference and neutral harmonics is completely eliminated to ensure trouble-free dimming. The HD Commercial 2-Circuit/2-Neutral Trac's extruded aluminum construction and continuously crimped conductors ensure mechanical strength and electrical reliability. Its integral suspension rail and predrilled mounting holes simplify installation. A wide variety of Juno trac fixtures may be specified for use with the HD Commercial Trac system.



### PRODUCT SPECIFICATIONS

**Construction** Rugged, heavy gauge extruded aluminum channel • Firmly crimped insulation and conductors for superior mechanical strength and electrical reliability • Integral mounting channel simplifies installation • Integral polarity ridge ensures proper connector and fixture installation • Fixtures supported by aluminum trac extrusion to provide maximum weight bearing capacity and to ensure reliable contact with electrical conductors • Available in white or black painted finishes.

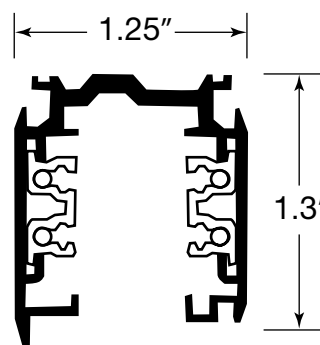
**Electrical** Two circuit operation with independent neutrals • Each circuit is rated for 20 Amp, 120 Volt operation • Trac extrusion serves as 100% capacity ground • May be powered using a number of standard electrical feeds, or current limiting end feeds if necessitated by local codes.

**Fixture Adapter** System specific and assembled to trac fixture • Integrally polarized construction to prevent reverse installation – only allows insertion in proper orientation • Rotary circuit selector enables simple switching between circuits • Integral on/off switch enables individual fixtures to be switched for servicing • See compatible trac fixture selection on page 2 – contact factory for additional fixture choices.

**Labels** UL Listed • cUL Listed • Current Limiting Feeds approved by the California Energy Commission to meet requirements of Title 24 • Current Limiting Feeds comply with ASHRAE 90.1 and IECC Section 805.5.1.4 for trac current limiting.

Specifications subject to change without notice.

### DIMENSIONS



### PRODUCT INSTALLATION

**Installation** May be installed in linear or grid configurations (see examples on page 2) • Trac sections can be cut in the field • Conductors of field cut trac sections must be bent using XTSV12 Bending Tool to ensure proper electrical connections.

**Mounting** May be mounted directly to hard ceiling using suitable anchors (supplied by others) at pre-drilled mounting holes or using SKB10 Mounting Clip and integral suspension rail • May be mounted to 15/16" T-bar ceiling using appropriate SKBT12 or SKBX12 Mounting Clips and integral suspension rail • Can also be suspended from ceilings using SPUS Pendant Stem Kits, SKB34 Cable Suspension Kits or 1/4"-20 threaded rod (by others) • Mounting points should be spaced no further than 4' apart and within 6" of any trac feed point, junction or end point.

# JUNO HD COMMERCIAL TRAC

120V, 2-Circuit/2-Neutral Trac System

## TRAC SECTIONS, JOINERS, FEEDS, ACCESSORIES & FIXTURES

**TEK Series**

### TRAC SECTIONS

#### PRODUCT CODES

Catalog Number	Description	Finish	Actual Length
<b>TEK4 4FT BL</b>	4' Trac Section	Black	48"
<b>TEK4 4FT WH</b>	4' Trac Section	White	48"
<b>TEK4 8FT BL</b>	8' Trac Section	Black	96"
<b>TEK4 8FT WH</b>	8' Trac Section	White	96"
<b>TEK4 12FT BL</b>	12' Trac Section	Black	144"
<b>TEK4 12FT WH</b>	12' Trac Section	White	144"

### HD Commercial Trac Compatible Fixtures

A variety of Juno trac fixture designs can be adapted to operate with the Juno HD Commercial Trac system. Each fixture has a factory-assembled 2-circuit trac adapter that is uniquely keyed to the 120V HD Commercial Trac system. **To order, select alternate TEK Adapter.**

Compatible fixture families include (consult factory for additional choices):

**T5T** T5HO Wall Washers  
**T209L G2** LED Conix  
**T218, T219** Delta 200 Series  
**T254L G2, T255L G2** LED Cylindra  
**T256LED, T257LED, T258L G2, T259L** LED Flood/Wall Washers  
**T261L G3, T262L G2, T263L G2, T265L G2, T267L G2** LED Conix II Series  
**T271L** LED Arc  
**T272L** LED Arc L  
**T275L** LED Arc XL  
**T283L, T285L** LED Cylinders with Integral Driver  
**T381L, T382L, T383L, T385L, T387L** LED Vertical Cylinder Series  
**T292, T293, T294, T296** Studio II Series  
**T295** Theatrical Light  
**T308, T620** Universals  
**T338, T340, T350** Integral Transformer Low Voltage Spotlights  
**T362, T363, T368** Open Back Gimbals (Rear Loading)  
**T366, T367** Quartz Floods  
**T403, T404** Pro-Gimbals  
**T431, T433, T435, T437** Wireform Series  
**T635** Trapezia Series  
**T687, T689, T690** Open Back Gimbals (Front Loading)  
**T691** Mini Swivel  
**T811, T812, T814, T816, T817, T819** Uno/Duo Series MR16  
**T831, T832, T834** Uno/Duo Series PAR30  
**T844, T845, T846** Cylindra Series  
**T852, T853, T858** Facet Series  
**T863, T868** Mamba Series  
**T1020, T1030, T1031S, T1038** Die Cast Gimbals  
**TBX18, TBX39, TBX40** Biax Wall Washers  
**TM201** CMH Vertical Ballast Universal  
**TM203, TM204** CMH Vertical Ballast Pro-Gimbal  
**TM207, TM208, TM209** CMH Vertical Ballast Conix PAR  
**TM215** CMH Vertical Ballast Conix T6, G12  
**TM218** CMH Vertical Ballast Conix T4, G8.5  
**TM232** CMH Vertical Ballast Concentric Cylinder T4, G8.5  
**TM241** CMH Vertical Ballast Cylindra MR16  
**TM245, TM246** CMH Vertical Ballast Cylindra PAR  
**TM250** CMH Vertical Ballast Cylindra ED17  
**TM251** CMH Vertical Ballast Cylindra T6, G12  
**TM254** CMH Vertical Ballast Cylindra T4, GU6.5  
**TM256** CMH Vertical Ballast Flood/Wall Wash T6, G12  
**TMBX26** Mini-Biax Wall Washer

**Ordering Examples:** "T219 BL" becomes "T219 TEK BL" and "TM208 70M WH" becomes "TM208 TEK 70M WH"

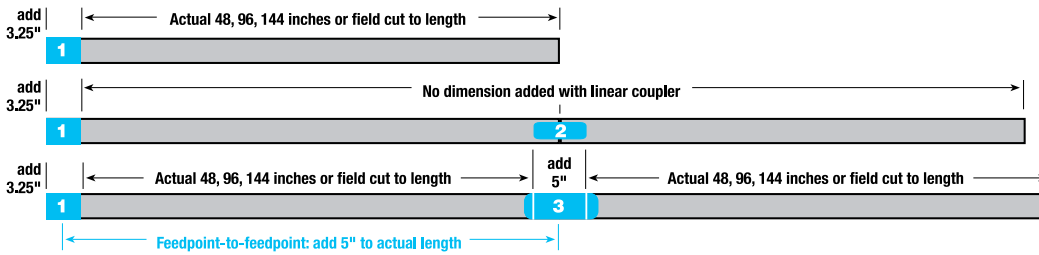
# JUNO HD COMMERCIAL TRAC

120V, 2-Circuit/2-Neutral Trac System

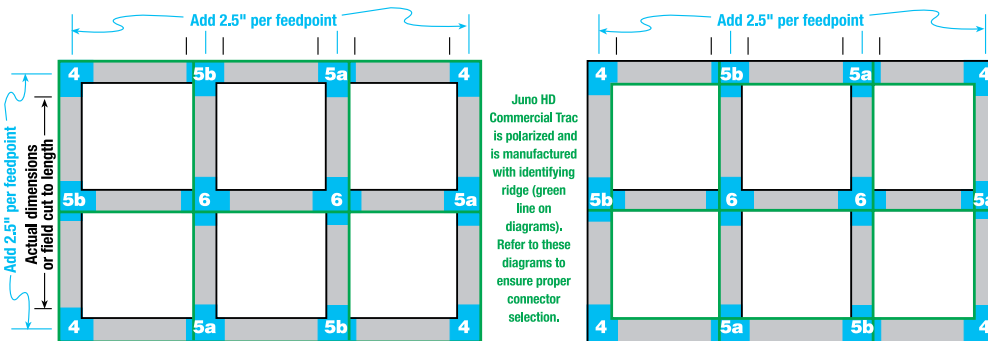
## TRAC SECTIONS, JOINERS, FEEDS, ACCESSORIES & FIXTURES

TEK Series

### POSSIBLE TRAC CONFIGURATION & RECOMMENDED COMPONENTS



1. **TEK11** End Feed (left) - standard  
**TEK12** End Feed (right)  
(used for conduit feed also)
2. **TEK21** Miniature Straight Connector
3. **TEK14** Center Feed
4. **TEK34** 90° "L" Connector  
(adjustable universal polarity)
- 5a. **TEK39** "T" Connector  
(adjustable right polarity)
- 5b. **TEK40** "T" Connector  
(adjustable left polarity)
6. **TEK38** "X" Connector



# JUNO HD COMMERCIAL TRAC

## 120V, 2-Circuit/2-Neutral Trac System

### TRAC SECTIONS, JOINERS, FEEDS, ACCESSORIES & FIXTURES

#### TEK Series

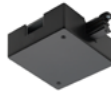
### SYSTEM COMPONENTS



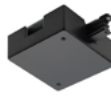
**TEK11 BL, TEK11 WH**  
End Feed - Left Polarity  
Enables feeding of TEK Trac from top.  
Use as Conduit End Feed also.



**TEK12 BL, TEK12 WH**  
End Feed - Right Polarity  
Enables feeding of TEK Trac from top.  
Use as Conduit End Feed also.



**TEK11CL BL, TEK11CL WH**  
Current Limiting End Feed - Left Polarity  
Enables feeding of TEK Trac from top. Requires two TCL Current Limiters (one per circuit) to provide trac current limiting per national, state and local energy codes. Permanently attaches to trac using one-way screw.



**TEK12CL BL, TEK12CL WH**  
Current Limiting End Feed - Right Polarity  
Enables feeding of TEK Trac from top. Requires two TCL Current Limiters (one per circuit) to provide trac current limiting per national, state and local energy codes. Permanently attaches to trac using one-way screw.



**TCLCB 0.5A BLCK, TCLCB 0.5A WHT, TCLCB 1A BLCK, TCLCB 1A WHT, TCLCB 2A BLCK, TCLCB 2A WHT, TCLCB 3A BLCK, TCLCB 3A WHT, TCLCB 4A BLCK, TCLCB 4A WHT, TCLCB 5A BLCK, TCLCB 5A WHT, TCLCB 6A BLCK, TCLCB 6A WHT, TCLCB 7A BLCK, TCLCB 7A WHT, TCLCB 8A BLCK, TCLCB 8A WHT, TCLCB 9A BLCK, TCLCB 9A WHT, TCLCB 10A BLCK, TCLCB 10A WHT, TCLCB 12A BLCK, TCLCB 12A WHT, TCLCB 14A BLCK, TCLCB 14A WHT,**  
Plug-In Current Limiters  
For use with TEK11 or TEK12 Current Limiting End Feeds. Available in 0.5A (60W), 1A (120W), 2A (240W), 3A (360W), 4A (480W), 5A (600W), 6A (720W), 7A (840W), 8A (960W), 9A (1080W), 10A (1200W), 12A (1440W) and 14A (1680W) ratings.



**TEK14 BL, TEK14 WH**  
Center Feed  
Joins two TEK trac sections in-line both electrically and mechanically. Enables feeding of TEK Trac from top at intersection.



**TEK21 BL, TEK21 WH**  
Miniature Straight Connector  
Joins two TEK trac sections in-line both electrically and mechanically.



**TEK24 BL, TEK24 WH**  
Adjustable Connector  
Capable of joining two TEK Trac sections at 90° to 180°. Ideal for applications where using an "L" connector is not practical; also useful for installing Trac around curved architectural details.



**TEK34 BL, TEK34 WH**  
90° "L" Connector  
Joins TEK Trac sections to make a 90° angle with continued electrical feed. May be used to feed TEK Trac from top.



**TEK38 BL, TEK38 WH**  
"X" Connector  
Joins four TEK Trac sections to make an "X" intersection with continued electrical feed. May be used to feed TEK Trac from top.



**TEK39 BL, TEK39 WH**  
"T" Connector - Adjustable Right Polarity  
Joins three TEK Trac sections to make a "T" intersection with continued electrical feed. May be used to feed TEK Trac from top.



**TEK40 BL, TEK40 WH**  
"T" Connector - Adjustable Left Polarity  
Joins three TEK Trac sections to make a "T" intersection with continued electrical feed. May be used to feed TEK Trac from top.



**GES15 BL, GES15 WH**  
Outlet Box Cover  
Thermoplastic outlet box cover for use when feeding TEK Trac directly over outlet box using TEK11, TEK12, TEK14, TEK34, TEK38, TEK39 or TEK40.



**TEK41 BL, TEK41 WH**  
Dead End  
Not supplied with TEK Trac sections - must be ordered separately.



**XTSV12**  
Trac Conductor Bending Tool  
All-in-one hand tool bends the trac conductors and measures the correct length to ensure proper electrical contact. Required only if trac sections are cut in the field.



**SKB10 BL, SKB10 WH**  
Mounting Bracket  
For mounting direct to ceiling



**SKBT12 BL, SKBT12 WH**  
Mounting Bracket  
For mounting to flush tile 15/16" T-bar ceiling.



**SKBX12 BL, SKBX12 WH**  
Mounting Bracket  
For mounting to drop tile recessed 15/16" T-bar ceiling.



**SKB30 BL, SKB30 WH**  
Ceiling Cup Kit  
Use to suspend TEK Trac from the ceiling when using steel cable or threaded rod. Included bracket provides suspension attachment point and ceiling cup covers the bracket for an aesthetically pleasing result. Combine with SP4P and SKB34 or 1/4"-20 threaded rod (supplied by others) for a complete suspension solution.



**SKB34 5FT, SKB34 9FT**  
Cable Suspension Kit  
Use to suspend TEK Trac from the ceiling with supplied 5' or 9' steel cable. Includes cable and cable adjustment fitter. Combine with SP4P and SKB30 for a complete suspension solution.



**SPUS 12IN BL, SPUS 12IN WH, SPUS 18IN BL, SPUS 18IN WH, SPUS 24IN BL, SPUS 24IN WH, SPUS 48IN BL, SPUS 48IN WH**  
Mounting Stem Kit  
Use to suspend TEK Trac from the ceiling. Combine with SP4P for suspension-only points. Available in 12", 18", 24" and 48" lengths.



**SP4P BL, SP4P WH**  
Universal Suspension Coupler  
Use with SPUS Stem Kit or SKB34 Cable Kit or 1/4"-20 threaded rod (supplied by others) to suspend TEK Trac except at feed or connection points.

Finishes: BL, BLCK - Black, WH, WHT - White