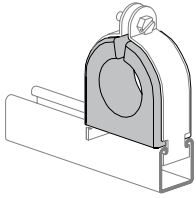


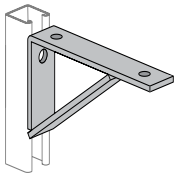
POWER-STRUT®
Part No. & Length Fin. Std Qty Wt./100 List Price per 100 pcs

PS 722 (continued from prev. page)
100 Pair Porce-A-Clamp
Includes Pipe Strap, Nut and Bolt



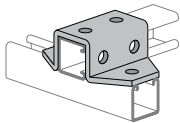
PS722 3	EV	10	109	\$5753.00
PS722 3-1/8	SS	10	109	\$8218.34
PS722 3-1/8	EV	10	109	\$5753.00
PS722 3-1/4	SS	10	130	\$9272.46
PS722 3-1/4	EV	10	130	\$6490.79
PS722 3-3/8	SS	10	130	\$9272.46
PS722 3-3/8	EV	10	130	\$6490.79
PS722 4	SS	10	160	\$10612.78
PS722 4	EV	10	160	\$7429.08
PS722 4-1/8	SS	10	160	\$11094.09
PS722 4-1/8	EV	10	160	\$7765.94
PS722 4-1/4	SS	10	160	\$11094.09
PS722 4-1/4	EV	10	160	\$7765.94
PS722 4-3/8	SS	10	160	\$11094.09
PS722 4-3/8	EV	10	160	\$7765.94
PS722 4-1/2	SS	10	160	\$11094.09
PS722 4-1/2	EV	10	160	\$7765.94

PS 732
Shelf Bracket



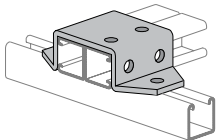
PS 732 8	GR	Bulk	168	\$2718.13
PS 732 10	GR	Bulk	202	\$2900.87
PS 732 12	GR	Bulk	258	\$3051.98
PS 732 14	GR	Bulk	292	\$5089.89
PS 732 16	GR	Bulk	381	\$7170.45
PS 732 18	GR	Bulk	416	\$7517.76
PS 732 20	GR	Bulk	461	\$7864.79

PS 733
Six Hole "U" Support



PS 733	EG	10	171	\$2707.39
PS 733	GR	10	171	\$2707.39

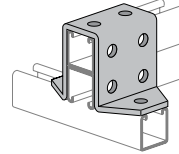
PS 734
Eight Hole "U" Support



PS 734	EG	10	209	\$2965.91
PS 734	GR	10	209	\$2965.91

POWER-STRUT®
Part No. & Length Fin. Std Qty Wt./100 List Price per 100 pcs

PS 735
Eight Hole "U" Support



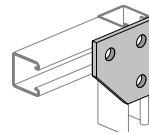
PS 735	EG	10	257	\$3103.99
PS 735	GR	10	257	\$3103.99

PS 736
Hook Rod Assembly



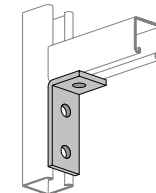
PS 736 6"	EG	25	24	\$819.10
PS 736 10"	EG	25	33	\$954.75

PS 744
Flat Corner Connector



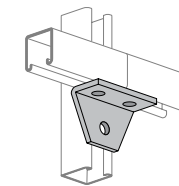
PS 744	EG	25	70	\$814.35
PS 744	GR	25	70	\$814.35

PS 745
Three Hole Corner Angle



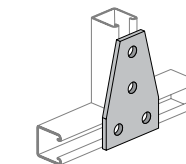
PS 745	EG	50	58	\$371.33
PS 745	GR	50	58	\$371.33

PS 746
Three Hole Corner Joint Connector



PS 746	EG	25	70	\$1114.95
PS 746	GR	25	70	\$1114.95

PS 747
Symmetrical Four Hole Connector



PS 747	EG	20	105	\$1295.93
PS 747	GR	20	105	\$1295.93