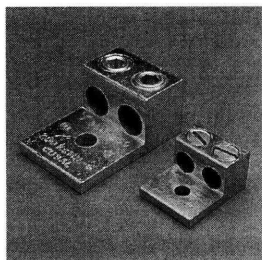


ALUMINUM SOLDERLESS LUGS • TYPE L2A

One hole front entrance copper or aluminum conductors



486B
LISTED
AL9CU



Body, fabricated from high strength aluminum alloy extrusion.

Lug is 100% reusable using either screw driver or hex wrench.
No special tools required.

Maximum conductivity, compact design, light weight with ultimate strength.

Finish, electro-tin plated to assure minimum contact resistance and protection against corrosion when used with copper wire.
(For added protection apply Penn-Union Cual-Aid® to cable before installation.)

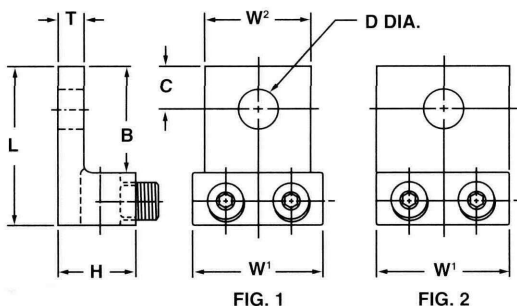


FIG. 1

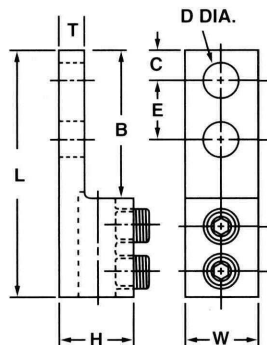
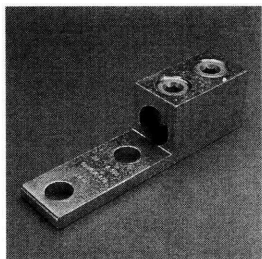
FIG. 2

Catalog Number	Torque Value In-Lbs.	Wire Range‡	Fig. No.	Approximate Dimensions							
				L	W ¹	W ²	H	T	B	C	D Dia.
				in	in	in	in	in	in	in	in
L2A-0	120	14-1/0	2	1 ¹⁵ / ₃₂	1 ¹ / ₈	—	25/ ₃₂	3/ ₁₆	27/ ₃₂	7/ ₁₆	17/ ₆₄
L2A-2/0	120	14-2/0	2	1 ¹⁵ / ₃₂	1 ¹ / ₄	—	25/ ₃₂	3/ ₁₆	27/ ₃₂	27/ ₆₄	17/ ₆₄
L2A-250	275	6-250	2	2 ⁹ / ₁₆	1 ⁴¹ / ₆₄	—	1 ³ / ₁₆	1/ ₄	1 ⁹ / ₁₆	7/ ₈	13/ ₃₂
L2A-350	275	6-350	1	2 ⁷ / ₈	1 ¹⁵ / ₁₆	1 ³ / ₄	1 ¹ / ₄	1/ ₄	1 ³ / ₄	9/ ₁₆	17/ ₃₂
L2A-500*	500	4-500	1	3 ¹ / ₈	2 ³ / ₈	1 ⁶³ / ₆₄	1 ⁹ / ₁₆	7/ ₁₆	1 ³ / ₄	5/ ₈	17/ ₃₂
L2A-600	550	2-600	1	3 ¹ / ₈	2 ³ / ₈	1 ⁶³ / ₆₄	1 ⁹ / ₁₆	7/ ₁₆	1 ³ / ₄	5/ ₈	17/ ₃₂
L2A-800	375	350-800	2	3 ¹ / ₂	3 ¹ / ₂	—	1 ¹⁵ / ₁₆	1/ ₂	1 ⁷ / ₈	7/ ₈	2 ¹ / ₃₂
L2A-1000	375	500-1000	2	3 ¹ / ₂	3 ¹ / ₂	—	1 ¹⁵ / ₁₆	1/ ₂	1 ⁷ / ₈	7/ ₈	2 ¹ / ₃₂

‡For conversion to metric range, see page 171. *Not CSA Certified.

ALUMINUM SOLDERLESS LUGS • TYPE LLA2

Two hole front entrance copper or aluminum conductors



Body, fabricated from high strength aluminum alloy extrusion.

Lug is 100% reusable using either screw driver or hex wrench.
No special tools required.

Maximum conductivity, compact design, light weight with ultimate strength.

Finish, electro-tin plated to assure minimum contact resistance and protection against corrosion when used with copper wire.
(For added protection apply Penn-Union Cual-Aid® to cable before installation.)

Catalog Number	Torque Value In-Lbs.	Wire Range‡	Approximate Dimensions							
			L	W	H	T	B	C	D Dia.	E
			in	in	in	in	in	in	in	in
LLA2-500-S1	275	4/0-500	5 ¹ / ₂	1 ¹ / ₄	1 ¹ / ₂	5/ ₁₆	3 ¹ / ₄	1/ ₂	9/ ₁₆	1 ³ / ₄
LLA2-750-S1	275	400-750	6 ³ / ₁₆	1 ¹ / ₂	1 ⁷ / ₈	9/ ₁₆	3 ¹³ / ₁₆	1/ ₂	9/ ₁₆	1 ³ / ₄

‡For conversion to metric range, see page 171.