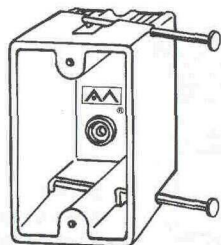
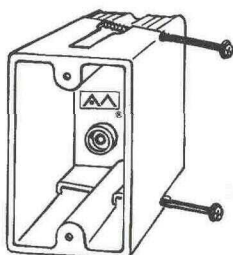


Residential Switch or Receptacle Box

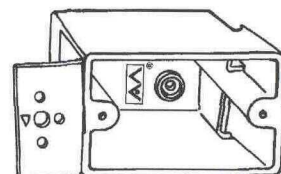
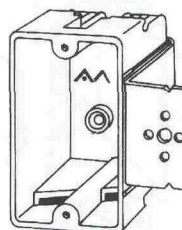
Series
1096-N
1098-N
1099-N



Series
1096-SS
1098-SS
1099-SS



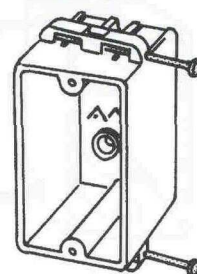
Series
1096-Z
1098-Z
1099-Z



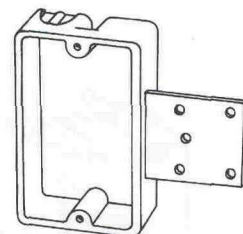
1098-UZH

For more detailed description of components, see Page 7.

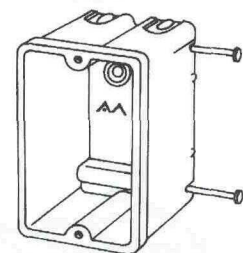
CU. IN. VOL.	Catalog Number	Component Description	Outside Dimensions			UPC# 85339	STD. PKG. QTY.	STD. PKG. WT.
			D	W	H			
6.0	9303-H	Side mount hanger, 1/4" offset. Not U.L. listed	1-1/8	2-1/4	3-5/8	10021	100	20
13.5	1082-N	Angled mid-nails	2-1/4	2-1/4	3-5/8	10961	100	33
18.0	1096-N**	Internal mid-nails	3	2-1/4	3-3/4	24414	100	31
18.0	1096-SS	Steel stud "SS" screws	3	2-1/4	3-3/4	24421	100	32
18.0	1096-Z2	1/4" offset, "Z" hanger	3	2-1/4	3-3/4	24402	50	24
18.0	1096-Z4	1/2" offset, "Z" hanger	3	2-1/4	3-3/4	24406	50	24
20.5	1098-N**	Angled mid-nails	3-1/4	2-1/4	3-3/4	25001	100	35
20.5	1098-SS	Steel stud "SS" screws	3-1/4	2-1/4	3-3/4	25009	100	36
20.5	1098-UZH	1/2" offset, horizontal mount universal "Z" hanger	3-1/4	2-1/4	3-3/4	25023	50	24
20.5	1098-Z2	1/4" offset, "Z" hanger	3-1/4	2-1/4	3-3/4	25030	50	24
20.5	1098-Z4	1/2" offset, "Z" hanger	3-1/4	2-1/4	3-3/4	25040	50	24
22.5	1099-N	Angled mid-nails	3-9/16	2-1/4	3-3/4	26000	100	37
22.5	1099-SS	Steel stud "SS" screws	3-9/16	2-1/4	3-3/4	26001	100	38
22.5	1099-UZ4	1/2" offset, universal "Z" hanger	3-9/16	2-1/4	3-3/4	26003	50	25
20.5	9327-N	Back nails	3-1/4	2-3/8	3-1/4	10195	50	21
14.0	9331-E	Ears*	2-1/2	2-3/8	3-1/4	10235	100	29
14.0	9331-EK	Ears, speed klamps	2-1/2	2-3/8	3-1/4	10239	100	29
14.0	9331-EC2	Ears, 2 wire clamps	2-1/2	2-3/8	3-1/4	10236	100	31
14.0	9331-ES	Ears, snap bracket*	2-1/2	2-3/8	3-1/4	10242	50	21
14.0	9331-ESK	Ears, snap bracket, speed klamps	2-1/2	2-3/8	3-1/4	10243	50	21
14.0	9331-ESC2	Ears, snap bracket, 2 wire clamps	2-1/2	2-3/8	3-1/4	10244	50	22
14.0	9331-EW	Ears, wing brackets*	2-1/2	2-3/8	3-1/4	38500	100	31
14.0	9331-EWK	Ears, wing brackets, speed klamps	2-1/2	2-3/8	3-1/4	38511	100	33
14.0	9331-EWC2	Ears, wing brackets, 2 wire clamps	2-1/2	2-3/8	3-1/4	38510	100	33



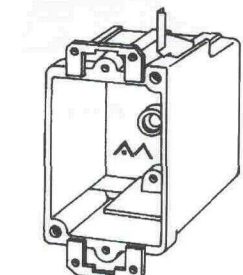
1082-N



9303-H



9327-N



9331-EWK

*SPEED "K" KLAMPS INCLUDED--BULK PACKED

**OTHER VARIATIONS AVAILABLE--CHECK PRICE SHEET



Conditions of Sale

Orders — All orders are subject to acceptance by Allied.

Terms — 2% 30 days NET 45 days from date of invoice.

Minimum Billing — Orders for less than \$100.00 value will be billed at \$100.00 plus transportation charge.

Freight — Freight charges will be prepaid and allowed on a single order, single release, of 1000 lbs. or 2300 pieces of standard items, which is to be routed to a single destination within the continental limits of U.S. Prepaid freight orders will be shipped via Allied's discretion. Shipments to points outside the continental limits of U.S. are F.O.B. shipping point with freight prepaid on 1000 lbs. or more to point of embarkation. Shipments by UPS, express or parcel post will be added to invoice.

Return Material — Return material will not be accepted without prior written authorization. Special order, obsolete, discontinued or any material over 12 months old will not be accepted for return.

Allied will consider for return:

- A. Standard catalog items only.
- B. Standard carton quantities in original carton.
- C. Materials of current design.

Upon approval, the terms of the credit for such returns are:

- A. The original purchase price not including cash discounts.
- B. Less 20% restocking charges.
- C. Less all freight charges paid by Allied.
- D. Less all repack costs incurred in placing the goods in saleable condition. Repack costs = 15% based on purchase price.
- E. Must be returned freight PREPAID.
- F. RGA must be returned with material.

Allied will accept return of merchandise which is defective or was supplied in error, by Allied, for full credit. Allied reserves the right to determine the receiving point of such returns, regardless of shipping point.

Rework — Under no circumstances will credit be allowed without written authorization by an official of Allied for rework on any materials.

Cancellation — All or part of an order of STANDARD items accepted by Allied may be cancelled without charge if written instructions are received prior to shipments. Partial cancellation may affect the pricing of remaining order. Orders for SPECIALS are not cancelable unless purchaser agrees to remit to Allied an amount, determined by Allied, covering costs, etc., incurred up to the point that such cancellation notice is received by Allied in connection therewith. Allied's only obligation shall be to replace such quantity of the product proved to be defective as shipped by Allied.

Loss or Damage in Transit — Allied's responsibility ceases with delivery to the carrier, at which time title passes to the purchaser and all claims for loss, damage and/or delay must be made to the carrier by the purchaser. Assistance in the form of shipping document copies is available upon request. Claims for shortage must be made within 15 days after receipt of material.

Prices — Orders are accepted with understanding the goods will be billed at the price in effect at time of shipment, unless otherwise specified in quotation.

Taxes — The amount of any present or future sales or other similar tax applicable to the material sold hereunder shall be added thereto.

Promise Dates — Any promise dates toward shipment of all or any part of any order, whether given prior to or after placement of said order, are determined to the best of our ability, but are in no way guaranteed. Allied, therefore, is not indemnitor for any damages, losses or claims whatsoever due to inability to meet such promises.

Clerical Errors — All clerical errors are subject to correction.

Catalog Specifications — Catalog weights and dimensions are subject to change at the discretion of Allied.

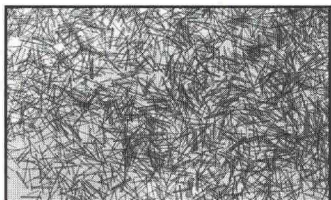
Warranties — Allied warrants goods manufactured by it to be free from defects in materials and workmanship for a period of one year from date of shipment from its plant. If within such period any such goods shall be proven to Allied's satisfaction to be so defective, then and in that event such goods shall be repaired or replaced at Allied's option. Such correction or replacement of defective goods shall constitute a fulfillment of all liabilities in respect of such goods.

Consequential Damage — Anything to the contrary, herein contained notwithstanding Allied shall not be liable for any consequential, contingent or incidental damages whatsoever.

Industry Standards — U.L. Listing -- Outlet boxes, box extensions and covers conform to U.L. Standard No. 514-C, File E-30594 as marked. Lampholders conform to U.L. Standard No. 496, File E-68415.

FEDERAL SPEC. -- Boxes and covers U.L. Listed meet Federal Specification W-J805.

Allied's UPC Manufacturer I.D. number is 85339.



Tough, Impact-Resistant Material

Allied fiberglass outlet boxes are the **Contractors Choice** for a variety of reasons:

Impact Resistant

- Allied Moulded switch and outlet boxes are molded of impact-resistant, high-strength fiberglass reinforced thermoset polyester material.
- Allied's superior dimensional stability prevents warping. During the molding process, the resin system used undergoes a chemical change resulting in a cross-linking of molecules. This process enhances strength while prohibiting brittleness from cold winter temperatures and distortion from summer's high heat.

Nonconductivity

Due to the nonconductivity of Allied fiberglass boxes, they do not have to be grounded making installation safer, easier, and faster.

2-Hour Wall & Ceiling Fire Classification

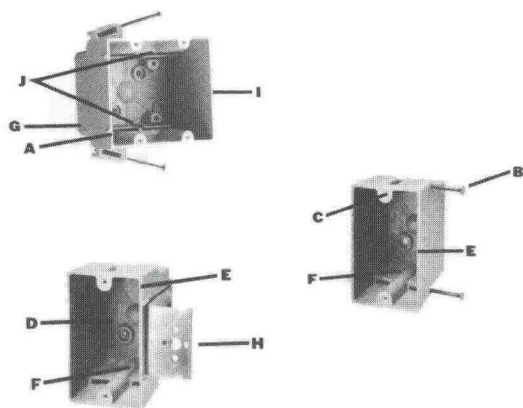
All Allied Moulded fiberglass boxes are classified by Underwriters Laboratories for use in 2-hour rated walls or ceilings. During an actual fire test set up in a U.L. laboratory, Allied boxes passed all of the test criteria outlined in U.L. Standard 263 for both walls and ceilings. Look for our classification CEYY "Outlet Boxes and Fittings Classified for Fire Resistance" in U.L.'s Fire Resistance Directory.

The U.L. reports from this testing process are available for examination upon request.

- File R9379-1 Fire Test Wall
- File R9379-2 Fire Test Ceiling

Allied offers the largest, most complete line of box sizes and attachment brackets in the industry for a wide variety of uses. A few of the most popular attachments are:

1. The "S" snap bracket or a "W" wing bracket for old work box installation.
2. Universal or "UB" and 24" bar hangers for maximum support of ceiling boxes used as fixture support.
3. The "B" adjustable stabilizing bar, available on the 2, 3, or 4 gang boxes for more secure mountings.
4. "Z" brackets with metal spurs to secure wall boxes to wood or steel studs.



- A. Offset gauge marks — box has a positive stop for the proper wall thickness.
- B. Bright common nails or pierce-point screws fit securely in specially designed supports. Angled for easy installation.
- C. Counter sink tapped device holes for easy installation.
- D. Cubic inch capacity clearly marked.
- E. Proudly U.L. Listed.
- F. Knockouts on fiberglass boxes are complete, reducing drafts and easily removed.
- G. Leveling ribs for support and square alignment to studs.
- H. Z brackets designed to securely hold box to wood or steel stud. Bracket also gives proper 1/4" or 1/2" offset.
- I. 2-HR Fire RATED clearly marked for easy inspector identification.
- J. K or C clamps.