

LED SURFACE MOUNT DOWN LIGHTS

Product Description

LED Surface Mount Down Light is a low-profile downlight intended for ceiling mount applications. Features driver on board (DOB) technology, with no external driver needed. These flush mount LED ceiling lights mount directly into a 4" junction box. Ideal for general LED Lighting in residential and commercial applications.

Features

- ✓ Driver on Board Technology, provides a 120V alternating current source and eliminates the need for traditional LED driver
- ✓ Quick & easy to install on standard junction box, ceiling mount with mounting plate
- ✓ Die-cast aluminum housing
- ✓ Smooth and continuous dimming, dimmable with most standard dimmers
- ✓ Rated for 50,000 hours
- ✓ No light bulbs to replace or dispose
- ✓ Instant full brightness (including in sub-zero temperatures)
- ✓ 80+ CRI
- ✓ cETLus listed for wet locations

Construction

Housing is made from die-cast aluminum  
Matte white polycarbonate diffuser

Finish

All exposed metal parts are powder coat painted and available in the following finishes: White Gloss Enamel (WH), Bronze (BZ), Brushed Nickel (BN), and Black (BK)

Diffuser

White polycarbonate diffuser

Electrical

This unit is wired for 120V operation  
Dimmable with most standard dimmers

Lamping

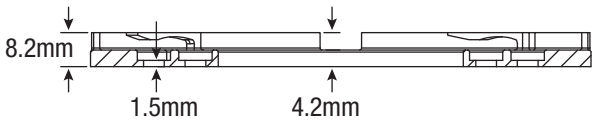
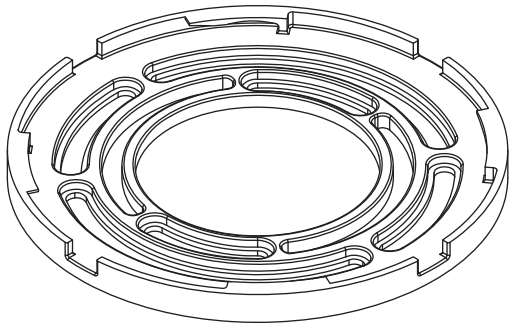
LED's are 3000K-4000K non-replaceable  
Rated for 50,000 hrs. 80+ CRI

Certification

Fixtures are cETLus listed for wet locations



3000K – 4000K LEDs, DIMMABLE  
THIN LINE SERIES  
cETLus LISTED



Warranty

Limited warranty: This fixture is free from defects in materials and workmanship for a period of 5 years from date of purchase

Includes

- (1) Surface mount fixture
- (1) Mounting plate
- (3) Wire Nuts
- (1) Fitting instruction
- (2) Wood screws

\*Specifications and dimensions subject to change without notice.

SPECIFICATIONS

Round LED Surface Mount Down Lights

	6 inch Round LED Surface Mount Down Light	8 inch Round LED Surface Mount Down Light	10 inch Round LED Surface Mount Down Light	12 inch Round LED Surface Mount Down Light
Product Codes	LVLDL-SR-06-XX-YY-L	LVLDL-SR-08-XX-YY-L	LVLDL-SR-10-XX-YY-L	LVLDL-SR-12-XX-YY-L
LED Color	White			
Color Temperature CCT	Warm White 3000K, Neutral White 4000K			
Input Voltage	120V			
Power Consumption (W)	11	14	17	22
Lumens: Warm White (WW) Neutral White (NW)	880 900	1000 1050	1200 1250	1800 1850
Luminous Efficacy (LPW): Warm White (WW) Neutral White (NW)	80 82	71 75	70 73	82 84
Color Rendering Index	>80			
Dimmable	Yes			
Life Span (hours)	50,000 hrs			
LEDs	Epistar			
Appearance Size	6" W x 1" H (152mm W x 25mm H)	8" W x 1" H (203mm W x 25mm H)	10" W x 1" H (254mm W x 25mm H)	12" W x 1" H (305mm W x 25mm H)

Square LED Surface Mount Down Lights

	6 inch Square LED Surface Mount Down Light	8 inch Square LED Surface Mount Down Light	10 inch Square LED Surface Mount Down Light	12 inch Square LED Surface Mount Down Light
Product Codes	LVLDL-SS-06-XX-YY-L	LVLDL-SS-08-XX-YY-L	LVLDL-SS-10-XX-YY-L	LVLDL-SS-12-XX-YY-L
LED Color	White			
Color Temperature CCT	Warm White 3000K, Neutral White 4000K			
Input Voltage	120V			
Power Consumption (W)	11	14	17	22
Lumens: Warm White (WW) Neutral White (NW)	880 900	1000 1050	1200 1250	1800 1850
Luminous Efficacy (LPW): Warm White (WW) Neutral White (NW)	80 82	71 75	70 73	82 84
Color Rendering Index	>80			
Dimmable	Yes			
Life Span (hours)	50,000 hrs			
LEDs	Epistar			
Appearance Size	6" W x 1" H (152mm W x 25mm H)	8" W x 1" H (203mm W x 25mm H)	10" W x 1" H (254mm W x 25mm H)	12" W x 1" H (305mm W x 25mm H)

XX = LED Color: WW-3000K, NW-4000K  
YY = Trim Color: WH = White Gloss Enamel, BZ = Bronze, BN = Brushed Nickel, BK = Black. NOTE: WH, BZ, and BN are stock, BK is special order.



www.nslusa.com



INNOVATIVE LIGHTING SOLUTIONS

THIN-LINE LED DOWN LIGHTS

Thin-line LED Down Lights are a breakthrough in LED downlight technology. Clever placement of 2835 LEDs around our diffusing glass lens provide brilliant and efficient LED lighting from a fixture that is only 1/2" (13mm) thick. Thin-line LED Down Lights are designed for retrofit and new construction installations and are very simple to install. They are ideal for shallow ceiling plenums since no IC can or box is required above the fixture.

Features

- ✓ Energy Star rated - up to 80% energy savings
- ✓ Dimmable to 5% with most standard dimmers
- ✓ Available in standard power and high power versions
- ✓ 120° beam spread
- ✓ Warm White and Neutral White color temperatures
- ✓ Two spring loaded clips to attach to any ceiling material
- ✓ 4 trim finishes available
- ✓ Standard Power suitable for wet location, High Power damp location listed
- ✓ No IC can required, for direct contact with insulation and combustible materials
- ✓ Connects directly to 120V power supply
- ✓ Optional 277V Step-Down Transformer
- ✓ 50,000 hour life
- ✓ 5 year limited warranty
- ✓ Airtight
- ✓ cETLus and Energy Star listed

WIDEST SELECTION  
OF FIXTURES ON  
THE MARKET!



Residential Applications

- ✓ Kitchens
- ✓ Pantries
- ✓ Laundry rooms
- ✓ Bathrooms
- ✓ In showers
- ✓ Under soffits (outdoor)

Commercial Applications

- ✓ Lobbies
- ✓ Hallways
- ✓ Banquet halls
- ✓ Elevators
- ✓ Stairways
- ✓ Retail
- ✓ Restaurants
- ✓ Office lighting
- ✓ Under cabinet
- ✓ In cabinet
- ✓ Wall mount for egress lighting
- ✓ Under soffits (outdoor)



ARCHITECTURAL AND DECORATIVE LIGHTING



04/17



THIN-LINE LED DOWN LIGHTS

Designed for retrofit and new construction, damp and wet locations, Thin-Line Down Lights are a versatile and affordable choice for countless applications

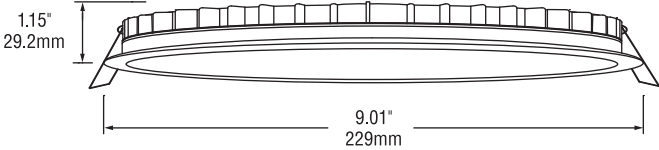
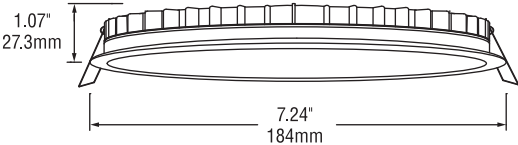
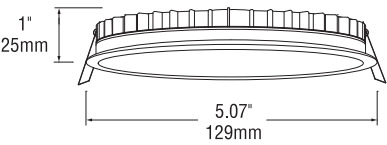
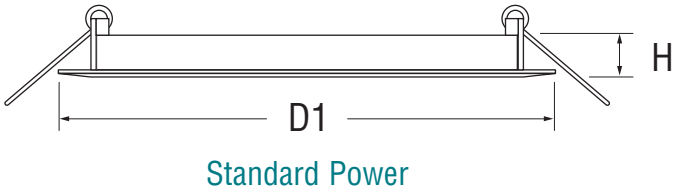
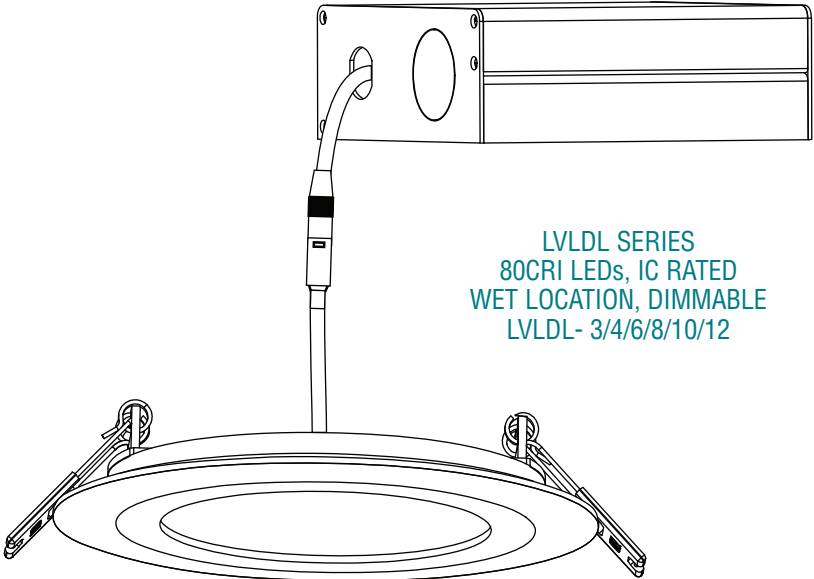
Finish
White Gloss Enamel, Black, Bronze, Brushed Nickel

Electrical
This unit is wired for 120V operation

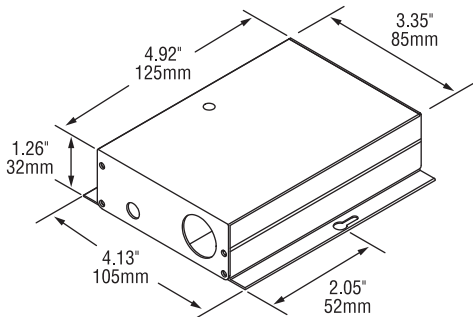
Lamping
LED's are 3000K (WW) and 4000K (NW)
Rated for 50,000 hrs. 80+ CRI

Certification
Standard Power are cETLus listed for wet location,
High Power model are damp location listed

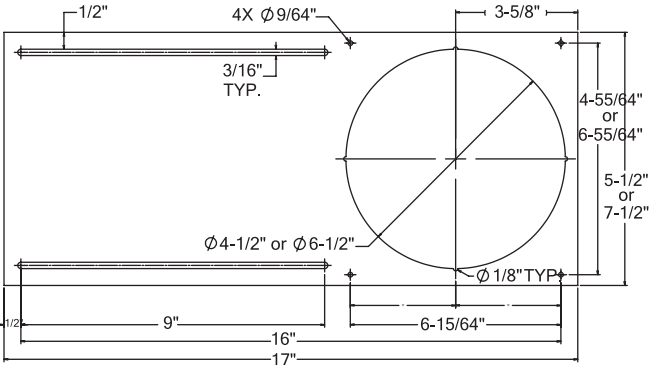
Warranty
Limited warranty: This fixture is free from defects in materials and workmanship for a period of 5 years from date of purchase



High Power



High Power Remote Driver



Construction Plate

SPECIFICATIONS

Thin-Line LED Down Lights

	3 inch Thin-line LED Down Light	4 inch Thin-line LED Down Light	6 inch Thin-line LED Down Light	8 inch Thin-line LED Down Light	10 inch Thin-line LED Down Light	12 inch Thin-line LED Down Light
Product Codes: Standard Power High Power	LVLDL-03-XX-YY-R-L —	LVLDL-04-XX-YY-R-L LVLDL-HP-04-XX-WH-R	LVLDL-06-XX-YY-R-L LVLDL-HP-06-XX-WH-R	LVLDL-08-XX-YY-R-L LVLDL-HP-08-XX-WH-R	LVLDL-10-XX-YY-R-L —	LVLDL-12-XX-YY-R-L —
LED Color	White					
Color Temperature CCT	Warm White 3000K, Neutral White 4000K					
Input Voltage	AC100 – 120V					
Power Consumption (W)	6	9, 11 (High Power)	12, 15 (High Power)	15, 25 (High Power)	19	24
No. SMD2835 LEDs	28	40, 72 (High Power)	50, 120 (High Power)	60, 192 (High Power)	80	120
Lumens: Warm White (WW) Neutral White (NW)	400 450	575, 1068 (High Power) 600, 1072 (High Power)	800, 1425 (High Power) 900, 1483 (High Power)	1200, 2575 (High Power) 1300, 2648 (High Power)	1700 1800	1872 2110
Luminous Efficacy (LPW): Warm White (WW) Neutral White (NW)	67 75	64, 97 (High Power) 67, 97 (High Power)	67, 95 (High Power) 75, 99 (High Power)	80, 103 (High Power) 87, 106 (High Power)	89 95	78 88
Color Rendering Index	>80					
Dimmable	Yes					
Life Span (hours)	50,000 hrs					
Appearance Size D1 x H	4" x 0.5" (102mm x 13mm)	4.875" x 0.5" (124mm x 13mm)	6.875" x 0.5" (175mm x 13mm)	8.78" x 0.5" (223mm x 13mm)	10.63" x 0.5" (270mm x 13mm)	11.81" x 0.5" (300mm x 13mm)
Appearance Size (High Power)	—	5.07" W x 1" H (129mm W x 25mm H)	7.24" W x 1" H (184mm W x 25mm H)	9.01" W x 1" H (229mm W x 25mm H)	—	—
Installation Hole Size	3.35" (85mm)	4.33" (110mm)	6.3" (160mm)	8.07" (205mm)	10.39" (264mm)	11.34" (288mm)
Installation Hole Size (High Power)	—	4.25" (108mm)	6.3" (160mm)	8.27" (210mm)	—	—

† XX = LED color: WW = Warm White (3000K), NW = Neutral White (4000K).
\* YY = Trim color: WH = White Gloss Enamel, BK = Black, BZ = Bronze, BN = Brushed Nickel.



THIN-LINE SQUARE LED DOWN LIGHTS

Product Description

The Thin-line Square Down Lights are rated for wet locations and designed for new construction and retrofit installations. They are ideal for for shallow ceiling plenums since no IC can or box is required above the fixture.

Features

- ✓ Low profile, perfect for shallow ceiling plenums
- ✓ No IC can required, for direct contact with insulation and combustible materials
- ✓ 80+ CRI
- ✓ Two spring loaded clips to attach to any ceiling material
- ✓ 120 degrees beam spread
- ✓ Edge lit technology eliminates hot spots
- ✓ 50,000 hours life
- ✓ Dimmable with most standard dimmers
- ✓ cETLus listed for wet locations

Construction

Housing is made from die-cast aluminum
Polycarbonate lens

Finish

All exposed metal parts are powder coat painted and available in the following finishes: White Gloss Enamel (WH), Bronze (BZ), Brushed Nickel (BN), and Black (BK)

Diffuser

Tempered polycarbonate lens

Electrical

This unit is wired for 120V operation (Dimmable version) & 277V (Non-Dimmable version)

Lamping

LED's are 3,000K-4,000K non-replaceable. Rated for 50,000 hrs. 80+ CRI

Certification

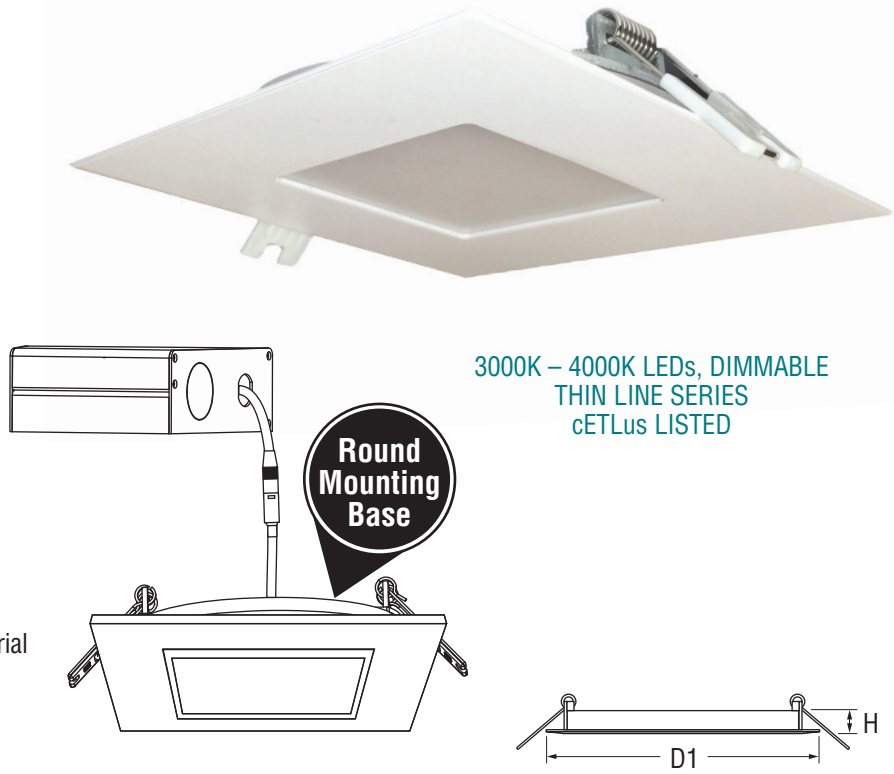
Fixtures are cETLus listed for wet locations

Warranty

Limited warranty: This fixture is free from defects in materials and workmanship for a period of 5 years from date of purchase

Includes

- (1) Recessed downlight fixture
- (1) Junction Box (with driver inside):



SPECIFICATIONS

Thin-Line Square LED Down Lights

	4 inch Thin-line Square Down Light	6 inch Thin-line Square Down Light
Product Codes	LVLDL-04S-XX-YY-R-L	LVLDL-06S-XX-YY-R-L
Power Consumption (W)	9W	12W
Lumens: Warm White (WW) Neutral White (NW)	575 600	800 900
Luminous Efficacy (LPW): Warm White (WW) Neutral White (NW)	64 67	67 75
Dimming	Yes	
Appearance Size D1 x D1 x H	5.08" x 5.08" x 0.5" (129mm x 129mm x 13mm)	7.16" x 7.16" x 0.5" (182mm x 182mm x 13mm)
Dimensions (J-Box)	3.31" x 3.31" x 1.14" (84mm x 84mm x 29mm)	3.31" x 3.31" x 1.14" (84mm x 84mm x 29mm)
Installation Hole Size	4.05" (103mm)	6.15" (156mm)
Color Rendering Index	80+	
Input Voltage	120V	
Color Temperature	3000K – 4000K	
LEDs	Epistar	
Power Factor	0.95	

XX = LED Color: WW-3000K, NW-4000K
YY = Trim Color: WH = White Gloss Enamel, BZ = Bronze, BN = Brushed Nickel, BK = Black.
NOTE: WH, BZ, and BN are stock, BK is special order.