

## Fig. 98 - Rod Stiffener

### Fig. 98B - Rod Stiffener with Break-Off Bolt Head

**Size Range:** Secures 3/8"-16 thru 7/8"-9 hanger rod

**Material:** Steel

**Function:** Secures channel to hanger rod for vertical seismic bracing. Slight distortion of the channel (strut) may occur upon installation of rod stiffeners.

**Approvals:** Included in our Seismic Restraints Catalog approved by the State of California Office of Statewide Health Planning and Development (**OSHDP**). For additional load, spacing and placement information relating to OSHDP projects, please refer to the TOLCO Seismic Restraint Systems Guidelines

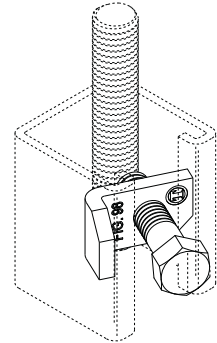
**Finish:** Electro Galvanized. Contact B-Line for alternative finishes and materials.

**Weight:** Approx. Wt./100: Fig. 98 - 11.8 Lbs. (5.3kg)  
Fig. 98B - 12.7 Lbs. (5.7kg)

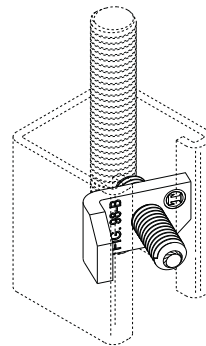
**Order By:** Figure number



**Fig. 98**



**Fig. 98B**



## Rod Stiffener Requirements

Rod Size	Maximum Rod Length Without Rod Stiffener	Maximum Spacing Between Rod Stiffeners
3/8"	19" (482mm)	13" (330mm)
1/2"	25" (635mm)	18" (457mm)
5/8"	31" (787mm)	23" (584mm)
3/4"	37" (940mm)	28" (711mm)
7/8"	43" (1092mm)	33" (838mm)
1"	50" (1270mm)	38" (965mm)
1 1/4"	60" (1524mm)	43" (1092mm)

### Notes:

- 1.) Rod stiffeners are required only on hanger and trapeze assemblies that have seismic bracing attached at or within 4" (101.6mm) of the rod. A minimum of two rod stiffeners (Figure 98, 98B, or SC228) must be installed.
- 2.) Recommended torque on Figure 98 and SC228 is 8 ft-lbs. (10.8Nm) or finger tight and one full turn with a wrench. Figure 98B has the break off bolt head.