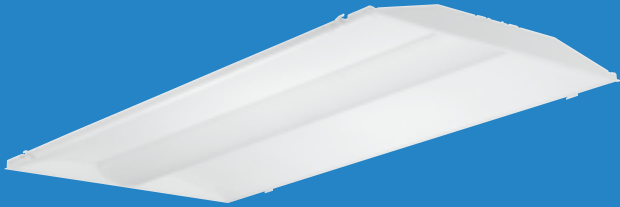


## GREATER SAVINGS

- The SLK retrofit kit can offer customers an energy savings of up to 60 percent or more.



## 5-MINUTE INSTALLATION

- The SLK Retrofit Kit comes pre-assembled to enable a fast and easy installation.
- The SLK uses the existing fluorescent fixture's housing while providing impressive efficacy.



**HUBBELL**  
Lighting

701 Millennium Blvd.  
Greenville, SC 29607  
hubbelllighting.com

ALERA LIGHTING

ARCHITECTURAL AREA LIGHTING

BEACON PRODUCTS

COLUMBIA LIGHTING

COMPASS

DUAL-LITE

HUBBELL CONTROL SOLUTIONS

HUBBELL INDUSTRIAL LIGHTING

HUBBELL OUTDOOR LIGHTING

KIM LIGHTING

KURT VERSEN

LITECONTROL

PRESCOLITE

WHITEWAY

*Meet the SLK  
LED Troffer  
Conversion Kit*

864.678.1000 • CO1098 • September 2017

Website [www.columbialighting.com](http://www.columbialighting.com)

© 2017 Columbia Lighting, a division of Hubbell Lighting, Inc.  
Because of continuing product improvement programs, Columbia Lighting  
reserves the right to change specifications without notice.

**Columbia**  
LIGHTING



# SLK LED Troffer Conversion Kit

## FEATURES

- Easy Installation & Maintenance.
- Less Cost, Less Materials, Less Labor.
- Controls Optional.
- Retrofits both Prismatic & Parabolic Fluorescent Troffers.



BEFORE



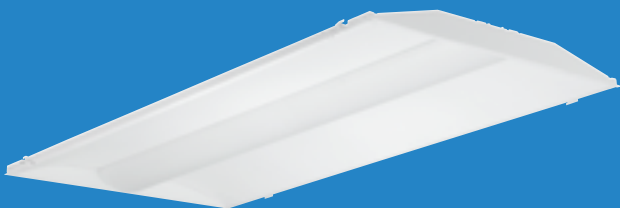
AFTER

## SPECTRASYNCTM

- Control your space based on the needs of the application, specific activities throughout the day and preferences of the occupants with three distinct SpectraSync™ Color Tuning Technologies.

## NX DISTRIBUTED INTELLIGENCE™

- NX Supports indoor and outdoor applications, wired, wireless and hybrid networked NX lighting control deployments, and enables emerging applications such as Hubbell Lighting's SpectraSync™ color tuning technology.



## CERTIFICATIONS



## PRODUCT AVAILABILITY TABLE

SIZE	LUMEN PACKAGE	NOMINAL LUMENS	NOMINAL WATTS	LUMENS PER WATT
22	VW	1567-1785	14	112-128
	VWHE	1530-1743	13	118-134
	MW	2049-2334	18	114-130
	MWHE	2010-2289	17	118-135
	LW	2689-3063	23	117-133
	ML	3320-3781	29	114-130
	MLHE	3293-3751	28	118-134
	HL	3599-4099	32	112-128
	HLHE	3497-3769	28	125-135
	VL	4270-4864	39	109-125
	VLHE	4257-4649	35	122-133
24	XW	2341-2524	19	123-133
	XWHE	2458-2650	19	129-139
	VW	3124-3558	28	112-127
	VWHE	3310-3770	27	123-140
	MW	3363-3831	30	112-128
	MWHE	3717-4234	31	120-137
	LW	4268-4861	36	119-135
	ML	4771-5434	39	122-139
	HL	5443-6200	44	124-141

Range represents Curve Lens 80 CRI 3000K through 5000K. Lumens will vary according to color temperatures and other factors. See specific photometric test[s].

### Controls Capable

- ControlScope® compatible\*
- Occupancy and Daylight Sensors, Philips

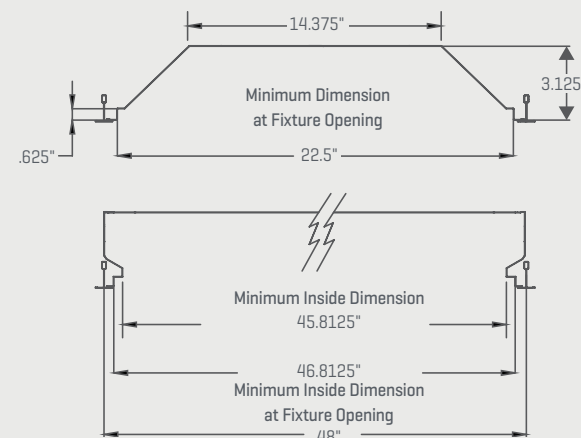
\*Registered trademark of Daintree Networks, used by permission.

## FIT AND FUNCTION

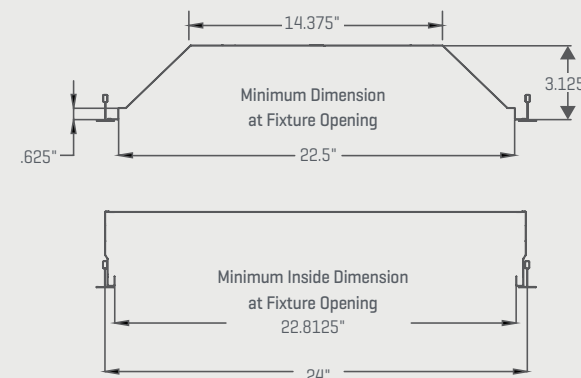
Columbia Lighting recommends a trial installation prior to ordering project quantities to ensure proper fit. SLK retrofit kits are designed to fit into most parabolic and lensed-recessed troffers with minimum dimensional requirements. SLK retrofit kits are not compatible with air handling units.

## DIMENSIONS

2x4 Minimum Dimensions



2x2 Minimum Dimensions



© 2017 Columbia Lighting, a division of Hubbell Lighting, Inc. Specifications subject to change without notice.

Tel 864.678.1000 / Website [www.columbialighting.com](http://www.columbialighting.com)