

A modern interior scene featuring a light-colored sofa with a dark metal frame and several cushions. The wall behind the sofa has three square niches containing decorative objects: a geometric sculpture, a white vase, and a stack of books. The right side of the image is overlaid with a semi-transparent blue rectangle containing text.

# LED Ribbon Lighting

Westgate's LED Ribbon Lighting product line offers a complete series of Indoor and Outdoor strip lights for your most demanding architectural lighting designs with dramatic results, with a full 5-Year Limited Warranty.

# R12V

## I2-VOLT

### STANDARD OUTPUT



R12V-5M-D3-CW



R12V-5M-D3-P65-WW

#### TECHNICAL SPECIFICATIONS:

- :: LED: SMD3528 chip spaced 5/8" on center, 19 per foot, .08 watts each chip
- :: Dimmable using a magnetic driver
- :: Cutting increment: Every 3 LEDs,
- :: Working voltage: 12V DC (LED driver required)
- :: Power: 1.5 watts per foot
- :: CRI: 80, maximum run is 40 feet
- :: 120° beam angle
- :: 3M double sided tape is pre-installed under each ribbon
- :: Includes 1 female ribbon-to-power supply connector (Prewired) and 1 male plug for connection to next ribbon (Prewired)
- :: 5-year warranty

#### Application:

- :: Ideal for undercabinet, soffit, display cases and toe kick lighting.



## 12V INDOOR STANDARD OUTPUT LED RIBBON

| CATALOG NO.   | COLOR TEMP | WATTS PER FT. | REEL LENGTH | LUMENS PER FT. | LEDs PER FT. | WIDTH    | LED TYPE | MAX RUN |
|---------------|------------|---------------|-------------|----------------|--------------|----------|----------|---------|
| R12V-5M-D3-CW | 5500K      | 1.5           | 16.4 ft.    | 90             | 19           | 7/16 in. | SMD3528  | 40 ft.  |
| R12V-5M-D3-WW | 3200K      | 1.5           | 16.4 ft.    | 90             | 19           | 7/16 in. | SMD3528  | 40 ft.  |



## 12V WET LOCATION STANDARD OUTPUT LED RIBBON

| CATALOG NO.       | COLOR TEMP | WATTS PER FT. | REEL LENGTH | LUMENS PER FT. | LEDs PER FT. | WIDTH    | LED TYPE | MAX RUN |
|-------------------|------------|---------------|-------------|----------------|--------------|----------|----------|---------|
| R12V-5M-D3-P65-CW | 5500K      | 1.5           | 16.4 ft.    | 90             | 19           | 7/16 in. | SMD3528  | 40 ft.  |
| R12V-5M-D3-P65-WW | 3200K      | 1.5           | 16.4 ft.    | 90             | 19           | 7/16 in. | SMD3528  | 40 ft.  |

Note: Ribbon is not for direct submersion in water.

# R12V

## I2-VOLT

### HIGH OUTPUT



R12V-5M-D5-CW



R12V-5M-D5-P65-WW

#### TECHNICAL SPECIFICATIONS:

- :: LED: SMD3528 chip spaced 5/8" on center, 19 per foot, .08 watts each chip
- :: Dimmable using a magnetic driver
- :: Cutting increment: Every 3 LEDs,
- :: Working voltage: 12V DC (LED driver required)
- :: Power: 1.5 watts per foot
- :: CRI: 80, maximum run is 16 feet
- :: 120° beam angle
- :: 3M double sided tape is pre-installed under each ribbon
- :: Includes 1 female ribbon-to-power supply connector (Prewired) and 1 male plug for connection to next ribbon (Prewired)
- :: 5-year warranty

#### Application:

- :: Ideal for undercabinet, soffit, display cases and toe kick lighting.



F2

12V HIGH OUTPUT LED RIBBON



## 12V INDOOR HIGH OUTPUT LED RIBBON

| CATALOG NO.    | COLOR TEMP         | WATTS PER FT. | REEL LENGTH | LUMENS PER FT. | LEDs PER FT. | WIDTH   | LED TYPE | MAX RUN |
|----------------|--------------------|---------------|-------------|----------------|--------------|---------|----------|---------|
| R12V-5M-D5-CW  | 5500K              | 4.4           | 16.4 ft.    | 254            | 19           | 1/2 in. | SMD5050  | 16 ft.  |
| R12V-5M-D5-WW  | 3200K              | 4.4           | 16.4 ft.    | 254            | 19           | 1/2 in. | SMD5050  | 16 ft.  |
| R12V-5M-D5-RGB | RGB COLOR CHANGING | 4.4           | 16.4 ft.    | 254            | 19           | 1/2 in. | SMD5050  | 16 ft.  |



## 12V WET LOCATION HIGH OUTPUT LED RIBBON

| CATALOG NO.        | COLOR TEMP         | WATTS PER FT. | REEL LENGTH | LUMENS PER FT. | LEDs PER FT. | WIDTH   | LED TYPE | MAX RUN |
|--------------------|--------------------|---------------|-------------|----------------|--------------|---------|----------|---------|
| R12V-5M-D5-P65-CW  | 5500K              | 4.4           | 16.4 ft.    | 254            | 19           | 1/2 in. | SMD5050  | 16 ft.  |
| R12V-5M-D5-P65-WW  | 3200K              | 4.4           | 16.4 ft.    | 254            | 19           | 1/2 in. | SMD5050  | 16 ft.  |
| R12V-5M-D5-P65-RGB | RGB COLOR CHANGING | 4.4           | 16.4 ft.    | 254            | 19           | 1/2 in. | SMD5050  | 16 ft.  |

# R24V

## 24-VOLT

## STANDARD OUTPUT



R24V-5M-D3-CW

### TECHNICAL SPECIFICATIONS:

- ⌘ Material: silicon copper membrane
- ⌘ LED: SMD3528 chip spaced 5/8" on center, 19 per foot, .08 watts each chip
- ⌘ Dimmable using a magnetic driver
- ⌘ Cutting increment: Every 4 inches
- ⌘ Working voltage: 24V DC (LED driver required)
- ⌘ Power: 1.5 watts per foot
- ⌘ Lumens: 90 lumens per foot, 4.73 LM per LED
- ⌘ CRI: 80
- ⌘ Max run: 80'
- ⌘ 120° beam angle
- ⌘ 3M double sided tape is preinstalled
- ⌘ Includes 1 female ribbon-to-power supply connector (Prewired) and 1 male plug for connection to next ribbon (Prewired)
- ⌘ 5-year warranty

### Application:

- ⌘ Ideal for undercabinet, soffit, display cases and toe kick lighting.



F3

24V STANDARD OUTPUT LED RIBBON



## 24V INDOOR STANDARD OUTPUT LED RIBBON

| CATALOG NO.   | COLOR TEMP | WATTS PER FT. | REEL LENGTH | LUMENS PER FT. | LEDs PER FT. | WIDTH    | LED TYPE | MAX RUN |
|---------------|------------|---------------|-------------|----------------|--------------|----------|----------|---------|
| R24V-5M-D3-CW | 5500K      | 1.5           | 16.4 ft.    | 90             | 19           | 7/16 in. | SMD3528  | 80 ft.  |
| R24V-5M-D3-WW | 3200K      | 1.5           | 16.4 ft.    | 90             | 19           | 7/16 in. | SMD3528  | 80 ft.  |



## 24V INDOOR (98.4FT ROLLS) STANDARD OUTPUT LED RIBBON

| CATALOG NO.    | COLOR TEMP | WATTS PER FT. | REEL LENGTH | LUMENS PER FT. | LEDs PER FT. | WIDTH    | LED TYPE | MAX RUN |
|----------------|------------|---------------|-------------|----------------|--------------|----------|----------|---------|
| R24V-30M-D3-CW | 5500K      | 1.5           | 98.4 ft.    | 90             | 19           | 7/16 in. | SMD3528  | 80 ft.  |
| R24V-30M-D3-WW | 3200K      | 1.5           | 98.4 ft.    | 90             | 19           | 7/16 in. | SMD3528  | 80 ft.  |

Note: For best results, connect each 32' section to the power supply



# R24V

## 24-VOLT

### STANDARD OUTPUT



R24V-5M-D3-P54-WW

#### TECHNICAL SPECIFICATIONS:

- :: Material: silicon copper membrane
- :: LED: SMD3528 chip spaced 5/8" on center, 19 per foot, .08 watts each chip
- :: Dimmable using a magnetic driver
- :: Cutting increment: Every 4 inches
- :: Working voltage: 24V DC (LED driver required)
- :: Power: 1.5 watts per foot
- :: Lumens: 90 lumens per foot, 4.73 LM per LED
- :: CRI: 80
- :: Max run: 80'
- :: 120° beam angle
- :: 3M double sided tape is preinstalled
- :: Includes 1 female ribbon-to-power supply connector (Prewired) and 1 male plug for connection to next ribbon (Prewired)
- :: 5-year warranty

#### Application:

- :: Ideal for undercabinet, soffit, display cases and toe kick lighting.



F4

24V STANDARD OUTPUT LED RIBBON



## 24V DAMP LOCATION STANDARD OUTPUT LED RIBBON

| CATALOG NO.       | COLOR TEMP | WATTS PER FT. | REEL LENGTH | LUMENS PER FT. | LEDs PER FT. | WIDTH    | LED TYPE | MAX RUN |
|-------------------|------------|---------------|-------------|----------------|--------------|----------|----------|---------|
| R24V-5M-D3-P54-CW | 5500K      | 1.5           | 16.4 ft.    | 90             | 19           | 7/16 in. | SMD3528  | 80 ft.  |
| R24V-5M-D3-P54-WW | 3200K      | 1.5           | 16.4 ft.    | 90             | 19           | 7/16 in. | SMD3528  | 80 ft.  |

# R24V

## 24-VOLT

## HIGH OUTPUT



R24V-5M-D5-CW



R24V-30M-D5-WW



### TECHNICAL SPECIFICATIONS:

- :: Material: silicon copper membrane
- :: LED: SMD5050 chip spaced 5/8" on center, 19 per foot, .23 watts each
- :: Dimmable using a magnetic driver
- :: With RGB models controller controls all functions including dimming
- :: Cutting increment: can be cut every 4"
- :: Working voltage: 24V DC (LED driver required)
- :: 24V ribbons have longer run capability compared to 12V.
- :: Power: 4.4 watts per foot, 72 watts per 16.4 foot roll
- :: Roll length: 16 feet-5 inches & 98 feet-5 inches
- :: Lumens: 254 lumens per foot, 14.2 lumens per LED, 4425 lumens per roll
- :: CRI: 80
- :: 120° beam angle
- :: Includes (connected 1 female ribbon-to-power supply connector) and 1 male plug for connection to next ribbon
- :: 5-year warranty

### FEATURES:

- :: SMD LEDs offer incredible brightness, energy efficiency and color rendering
- :: Low heat, easy installation, environmentally friendly and maintenance free for many years
- :: Indoor series ideal for undercabinet, soffit, coves, display cases and toe kick lighting.
- :: 3M double sided tape is pre-installed under each ribbon.



## 24V INDOOR HIGH OUTPUT LED RIBBON

| CATALOG NO.    | COLOR TEMP         | WATTS PER FT. | REEL LENGTH | LUMENS PER FT. | LEDs PER FT. | WIDTH   | LED TYPE | MAX RUN |
|----------------|--------------------|---------------|-------------|----------------|--------------|---------|----------|---------|
| R24V-5M-D5-CW  | 5500K              | 4.4           | 16.4 ft.    | 254            | 19           | 1/2 in. | SMD5050  | 32 ft.  |
| R24V-5M-D5-WW  | 3200K              | 4.4           | 16.4 ft.    | 254            | 19           | 1/2 in. | SMD5050  | 32 ft.  |
| R24V-5M-D5-RGB | RGB COLOR CHANGING | 4.4           | 16.4 ft.    | 254            | 19           | 1/2 in. | SMD5050  | 32 ft.  |



## 24V INDOOR (98.4FT ROLLS) HIGH OUTPUT LED RIBBON

| CATALOG NO.    | COLOR TEMP | WATTS PER FT. | REEL LENGTH | LUMENS PER FT. | LEDs PER FT. | WIDTH   | LED TYPE | MAX RUN |
|----------------|------------|---------------|-------------|----------------|--------------|---------|----------|---------|
| R24V-30M-D5-CW | 5500K      | 4.4           | 98.4 ft.    | 254            | 19           | 1/2 in. | SMD5050  | 32 ft.  |
| R24V-30M-D5-WW | 3200K      | 4.4           | 98.4 ft.    | 254            | 19           | 1/2 in. | SMD5050  | 32 ft.  |

Note: For best results, connect each 32' section to the power supply

# R24V

## 24-VOLT

## HIGH OUTPUT



R24V-5M-D5-P54-CW



R24V-5M-D5-P68-WW



### TECHNICAL SPECIFICATIONS:

- :: LED: SMD5050 chip spaced 5/8" on center, 19 per foot, .23 watts each
- :: Dimmable using a magnetic driver
- :: With RGB models controller controls all functions
- :: Cutting increment: can be cut every 3 LEDs, approximately every 2 inches
- :: Working voltage: 24V DC (LED driver required)
- :: 24V ribbons have longer run capability compared to 12V.
- :: Power: 4.4 watts per foot, 72 watts per 16.4 foot roll
- :: Roll length: 16 feet-5 inches & 98 feet-5 inches
- :: Lumens: 254 lumens per foot, 14.2 lumens per LED, 4425 lumens per roll
- :: CRI: 80, maximum run is 32 feet
- :: 120° beam angle
- :: Includes (connected 1 female ribbon-to-power supply connector) and 1 male plug for connection to next ribbon
- :: 5-year warranty

### FEATURES:

- :: SMD LEDs offer incredible brightness, energy efficiency and color rendering
- :: Low heat, easy installation, environmentally friendly and maintenance free for many years
- :: Indoor series ideal for undercabinet, soffit, coves, display cases and toe kick lighting.
- :: Outdoor series ideal for decks, eaves, landscape and any location where ribbon is exposed to dust or water.
- :: 3M double sided tape is pre-installed under each ribbon for P54 only.

## 24V DAMP LOCATION HIGH OUTPUT LED RIBBON

| CATALOG NO.        | COLOR TEMP         | WATTS PER FT. | REEL LENGTH | LUMENS PER FT. | LEDs PER FT. | WIDTH   | LED TYPE | MAX RUN |
|--------------------|--------------------|---------------|-------------|----------------|--------------|---------|----------|---------|
| R24V-5M-D5-P54-CW  | 5500K              | 4.4           | 16.4 ft.    | 254            | 19           | 1/2 in. | SMD5050  | 32 ft.  |
| R24V-5M-D5-P54-WW  | 3200K              | 4.4           | 16.4 ft.    | 254            | 19           | 1/2 in. | SMD5050  | 32 ft.  |
| R24V-5M-D5-P54-RGB | RGB COLOR CHANGING | 4.4           | 16.4 ft.    | 254            | 19           | 1/2 in. | SMD5050  | 32 ft.  |



## 24V WET LOCATION HIGH OUTPUT LED RIBBON

| CATALOG NO.        | COLOR TEMP         | WATTS PER FT. | REEL LENGTH | LUMENS PER FT. | LEDs PER FT. | WIDTH   | LED TYPE | MAX RUN |
|--------------------|--------------------|---------------|-------------|----------------|--------------|---------|----------|---------|
| R24V-5M-D5-P68-CW  | 5500K              | 4.4           | 16.4 ft.    | 254            | 19           | 1/2 in. | SMD5050  | 32 ft.  |
| R24V-5M-D5-P68-WW  | 3200K              | 4.4           | 16.4 ft.    | 254            | 19           | 1/2 in. | SMD5050  | 32 ft.  |
| R24V-5M-D5-P68-RGB | RGB COLOR CHANGING | 4.4           | 16.4 ft.    | 254            | 19           | 1/2 in. | SMD5050  | 32 ft.  |

# LED ELECTRONIC RIBBON LIGHT DRIVERS



LEDDR-12V-48DP  
LEDDR-24V-48DP



LEDDR-12V-72W  
LEDDR-24V-72W



LEDDR-12V-150W  
LEDDR-24V-150W



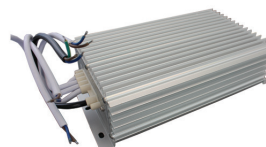
LEDDR-12V-300W  
LEDDR-24V-300W



LEDDR-12V-400W  
LEDDR-24V-400W



LEDDR-12V-WP-60W  
LEDDR-24V-WP-60W





LEDDR-12V-WP-200W  
LEDDR-24V-WP-200W





## LED ELECTRONIC NON-DIMMABLE DRIVERS

Can be dimmed on the secondary side using electronic dimmers (see page F10)

### 12-VOLT

| CATALOG NO.   | MAX<br>WATTAGE | AMP      | OPERATING VOLTAGE |        | 15A PLUG &<br>MALE 12V CONNECTOR |
|---|----------------|----------|-------------------|--------|----------------------------------|
|   |                |          | INPUT             | OUTPUT |                                  |
| LEDDR-12V-48DP  | 48W max        | 4AMP     | 120V AC           | 12V AC | Y                                |
| LEDDR-12V-WP-60W   | 60W max        | 5AMP     | 120V AC           | 12V AC | N                                |
| LEDDR-12V-72W   | 72W max        | 6AMP     | 120V AC           | 12V AC | Y                                |
| LEDDR-12V-150W  | 150W max       | 12.5AMP  | 120V AC           | 12V AC | N                                |
| LEDDR-12V-300W  | 300W max       | 25AMP    | 120V AC           | 12V AC | N                                |
| LEDDR-12V-400W  | 400W max       | 33AMP    | 120V AC           | 12V AC | N                                |
| LEDDR-12V-WP-200W  | 200W max       | 16.66AMP | 120V AC           | 12V AC | N                                |

### 24-VOLT

| CATALOG NO.   | MAX<br>WATTAGE | AMP      | OPERATING VOLTAGE |        | 15A PLUG &<br>MALE 12V CONNECTOR |
|---|----------------|----------|-------------------|--------|----------------------------------|
|   |                |          | INPUT             | OUTPUT |                                  |
| LEDDR-24V-48DP  | 48W max        | 2AMP     | 120V AC           | 24V DC | Y                                |
| LEDDR-24V-WP-60W   | 60W max        | 2.5AMP   | 100V~130VAC       | 24V DC | N                                |
| LEDDR-24V-72W   | 72W max        | 3AMP     | 120V AC           | 24V DC | Y                                |
| LEDDR-24V-150W  | 150W max       | 5AMP     | 120V AC           | 24V DC | N                                |
| LEDDR-24V-300W  | 300W max       | 8.33AMP  | 100V~130VAC       | 24V DC | N                                |
| LEDDR-24V-400W  | 400W max       | 12.5AMP  | 120V AC           | 24V DC | N                                |
| LEDDR-24V-WP-200W  | 200W max       | 16.66AMP | 120V AC           | 24V DC | N                                |



# LED DIMMABLE MAGNETIC DC DRIVERS



20-WATT THRU 50-WATT



150-WATT THRU 300-WATT



100-WATT



## TECHNICAL SPECIFICATIONS:

- :: Material: black powder-coated steel enclosure
- :: Dimmable with most magnetic dimmers (Dimmer minimum load must be met.)
- :: Confirms to UL standard 1310 class 2 wiring
- :: Primary and secondary auto-reset breaker
- :: Input leads 18 AWG
- :: Output leads 14 AWG
- :: Leads maximum operating temperature 105 centigrade
- :: Enclosure temperature does not exceed 65 at 45 ambient when fully-loaded.
- :: Wiring compartment has (2) 1/2" knockouts.
- :: 5-year warranty

## FEATURES:

- :: Compact design allows for installation in low profile applications.
- :: Ideal for hard wired applications or when full range dimming is required.
- :: Encapsulated with polyester resin for whisper-quiet operation.

F8

LED MAGNETIC DIMMABLE DRIVERS

## 12-VOLT

## LED DIMMABLE MAGNETIC DRIVERS

| CATALOG NO. | MAX WATTAGE | OPERATING VOLTAGE |        | SELF-RESET |           | DIMENSIONS                |
|-------------|-------------|-------------------|--------|------------|-----------|---------------------------|
|             |             | INPUT             | OUTPUT | PRIMARY    | SECONDARY |                           |
| UCM20L12DC  | 20W max     | 120V AC           | 12V DC | 0.80A      | 3.00A     | 5"(L) x 2-1/8"(W) x 2"(D) |
| UCM40L12DC  | 40W max     | 120V AC           | 12V DC | 1.25A      | 5.00A     | 5"(L) x 2-1/8"(W) x 2"(D) |
| UCM50L12DC  | 50W max     | 120V AC           | 12V DC | 1.25A      | 5.00A     | 5"(L) x 2-1/8"(W) x 2"(D) |
| UCM100L12DC | 100W max    | 120V AC           | 12V DC | 2.00A      | 13.00A    | 5"(L) x 4-1/8"(W) x 2"(D) |
| UCM150L12DC | 150W max    | 120V AC           | 12V DC | 2.00A      | 13.00A    | 5"(L) x 4-1/8"(W) x 4"(D) |
| UCM300L12DC | 300W max    | 120V AC           | 12V DC | 2.00A      | 13.00A    | 5"(L) x 4-1/8"(W) x 4"(D) |

## 24-VOLT

| CATALOG NO. | MAX WATTAGE | OPERATING VOLTAGE |        | SELF-RESET |           | DIMENSIONS                |
|-------------|-------------|-------------------|--------|------------|-----------|---------------------------|
|             |             | INPUT             | OUTPUT | PRIMARY    | SECONDARY |                           |
| UCM20L24DC  | 20W max     | 120V AC           | 24V DC | 0.80A      | 1.50A     | 5"(L) x 2-1/8"(W) x 2"(D) |
| UCM40L24DC  | 40W max     | 120V AC           | 24V DC | 1.25A      | 3.00A     | 5"(L) x 2-1/8"(W) x 2"(D) |
| UCM50L24DC  | 50W max     | 120V AC           | 24V DC | 1.25A      | 4.00A     | 5"(L) x 2-1/8"(W) x 2"(D) |
| UCM96L24DC  | 96W max     | 120V AC           | 24V DC | 2.00A      | 4.00A     | 5"(L) x 4-1/8"(W) x 2"(D) |
| UCM150L24DC | 150W max    | 120V AC           | 24V DC | 2.00A      | 10.00A    | 5"(L) x 4-1/8"(W) x 4"(D) |
| UCM300L24DC | 300W max    | 120V AC           | 24V DC | 5.00A      | 12.50A    | 5"(L) x 4-1/8"(W) x 4"(D) |

# RGB RIBBON LIGHT CONTROLLERS



LED-CTRL-24K



LED-CTRL-44K



LED-CTRL-20K-HD

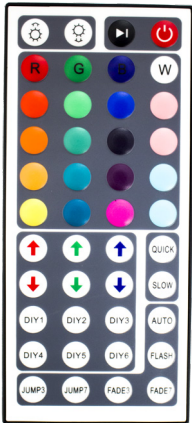


LED-CTRL-44K-HD

- :: Westgate’s controllers are designed to work with our RGB series LED ribbon products for both 12 and 24 volt ribbon.
- :: RGB controllers provide precise mixing between the three primary colors (red, green, blue) and an give fine adjustment for whites ranging from 2700K to 6500K.
- :: Also includes fade and flash functions. Chasing not available.
- :: 5-year warranty



Controller  
Magnified View



Controller  
Magnified View

## CONTOLLERS FOR RGB RIBBON (FOR USE WITH LED DRIVERS)

| CATALOG NO.      | # KEYS/<br>REMOTE | REMOTE<br>DISTANCE | MAX WATTAGE |            | OUTPUT<br>CURRENT | DIMENSIONS             |
|------------------|-------------------|--------------------|-------------|------------|-------------------|------------------------|
| LEDR-CTRL-24K    | 24 keys IR        | 30 ft.             | 72W /12V    | 144W / 24V | <2A               | 2" x 1-3/8" x 7/8"     |
| LEDR-CTRL-44K    | 44 keys IR        | 30 ft.             | 72W /12V    | 144W / 24V | <2A               | 2-1/2" x 1-3/8" x 7/8" |
| LEDR-CTRL-44K-HD | 44 keys IR        | 30 ft.             | 144W /12V   | 288W / 24V | <4A               | 5" x 2-1/2" x 1"       |
| LEDR-CTRL-20K-HD | 20 keys IR        | 30 ft.             | 288W /12V   | 576W / 24V | <10A              | 4" x 2-1/2" x 1"       |

## A SERIES



LEDR-8M-A  
LEDR-10M-A  
LEDR-10M-A-RGB

## B SERIES



LEDR-8M-B

LEDR-10M-B

LEDR-10M-B-RGB

LEDR-8M-HW

LEDR-10M-HW

LEDR-10M-HW-RGB

## C SERIES



CONTYPE-H

CONTYPE-H-20

CONTYPE-RGB-H

CONTYPE-RGB-H-20

LEDR-8M-C

LEDR-10M-C

LEDR-10M-C-RGB

## TANDEM COUPLINGS

| CATALOG NO.    | TO BE USED WITH                                     | LENGTH           |
|----------------|---|------------------|
| LEDR-8M-A      | SMD3528 Tape light (Part numbers with "D3")         | 0.62" x 0.55 (W) |
| LEDR-10M-A     | SMD5050 Tape light (Part numbers with "D5")         | 0.62" x 0.55 (W) |
| LEDR-10M-A-RGB | RGB SMD5050 Tape light (Part numbers with "D5 RGB") | 0.62" x 0.55 (W) |

## POWER FEED CABLES

| CATALOG NO.     | TO BE USED WITH   | LENGTH |
|-----------------|---|--------|
| LEDR-8M-B       | SMD3528 Tape light (Part numbers with "D3")                           | 6"     |
| LEDR-10M-B      | SMD5050 Tape light (Part numbers with "D5")                           | 6"     |
| LEDR-10M-B-RGB  | RGB SMD5050 Tape light (Part numbers with "D5 RGB")                   | 6"     |
| LEDR-8M-HW      | Hardwire Lead for SMD3528 Tape light (Part numbers with "D3")         | 6"     |
| LEDR-10M-HW     | Hardwire Lead for SMD5050 Tape light (Part numbers with "D5")         | 6"     |
| LEDR-10M-HW-RGB | Hardwire Lead for RGB SMD5050 Tape light (Part numbers with "D5 RGB") | 6"     |

## COUPLINGS WITH WIRE (JUMPER CABLES TO CONNECT 2 SECTIONS OF RIBBON LIGHT)

| CATALOG NO.    | TO BE USED WITH                                     | LENGTH |
|----------------|---|--------|
| LEDR-8M-C      | SMD3528 Tape light (Part numbers with "D3")         | 6"     |
| LEDR-10M-C     | SMD5050 Tape light (Part numbers with "D5")         | 6"     |
| LEDR-10M-C-RGB | RGB SMD5050 Tape light (Part numbers with "D5 RGB") | 6"     |

## LED RIBBON LIGHTING | ACCESSORIES FOR 12V &amp; 24V EXTENSION CORDS FOR SECONDARY-SIDE OF DRIVERS

| CATALOG NO.      | DESCRIPTION  | LENGTH |
|------------------|--|--------|
| CONTYPE-H        | DC TERMINAL, ONE SIDE MALE, ONE SIDE FEMALE          | 18"    |
| CONTYPE-H-20     | DC TERMINAL, ONE SIDE MALE, ONE SIDE FEMALE (20FT.)  | 20'    |
| CONTYPE-RGB-H    | ROUND RGB TERMINAL, ONE SIDE MALE, ONE SIDE FEMALE   | 18"    |
| CONTYPE-RGB-H-20 | RGB TERMINAL, ONE SIDE MALE, ONE SIDE FEMALE (20FT.) | 20'    |



LOW-PROFILE  
CHANNELS



LOW-PROFILE RECESSED  
CHANNEL

Shown with frosted lens (not included)



LOW-PROFILE 45°  
CHANNEL

LOW-PROFILE, RECESSED & 45° ALUMINUM CHANNELS & LENSES

| CATALOG NO.       | DESCRIPTION   |
|-------------------|---|
| LEDR-CHNL-LP-4FT  | ALUMINUM LO PRO CHANNEL, 48" FOR LED RIBBON, 0.48" WIDE, 0.275" DEEP                          |
| LEDR-CHNL-LP-8FT  | (SPECIAL ORDER) ALUMINUM LO PRO CHANNEL, 96" FOR LED RIBBON, 0.48" WIDE, 0.275" DEEP          |
| LEDR-CHNL-LPR-4FT | (SPECIAL ORDER) ALUMINUM LO PRO RECESSED CHANNEL, 48" FOR LED RIBBON, 0.48" WIDE, 0.275" DEEP |
| LEDR-CHNL-45-4FT  | (SPECIAL ORDER) POLYCARBONATE CLEAR 45° CHANNEL, 48" FOR LED RIBBON                           |
| LEDR-FRST-LP-LENS | ACRYLIC FROSTED MATTE LENS, 48" FOR LO PRO CHANNELS - BEST DIFFUSED EFFECT                    |
| LEDR-FRST-45-LENS | (SPECIAL ORDER) ACRYLIC FROSTED MATTE LENS, 48" FOR 45° CHANNEL - BEST DIFFUSED EFFECT        |



CLEAR    FROSTED

CHANNEL LENSES

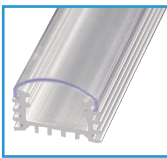


POLYCARBONATE  
CHANNEL

ALUMINUM  
CHANNEL



END CAP



Shown  
with optional clear lens

SURFACE-MOUNT CHANNELS & LENSES

| CATALOG NO.       | DESCRIPTION   |
|-------------------|---|
| LEDR-CHNL-4FT     | ALUMINUM CHANNEL, 48" FOR LED RIBBON, 0.6" WIDE, 0.36" DEEP               |
| LEDR-CHNL-4FT-WHT | POLYCARBONATE CHANNEL, 48" FOR LED RIBBON, 0.6" WIDE, 0.36" DEEP, FROSTED |
| LEDR-CLR-LENS     | POLYCARBONATE CLEAR LENS, 48" FOR 0.6" CHANNELS                           |
| LEDR-FRST-LENS    | ACRYLIC FROSTED MATTE LENS, 48" FOR 10.6" CHANNELS - BEST DIFFUSED EFFECT |
| LEDR-CHANL-CAP    | CHANNEL END CAP   |

F11

CHANNELS / LENSES



# Q&A



## Where can LED Ribbon Light be used?

LED Ribbon is a thin, flexible product that is easy to install and can be used for many unique lighting applications, like under cabinet, retail display case, soffit, landscape, sign lighting, even outlining the architectural features of a building. The fifty thousand (50,000) hour life expectancy of the SMD LED chips offer many years of maintenance free operation with a low cost per foot installation.



## What is the difference between LED Rope light and LED Ribbon light?

LED Ribbon has a low profile and uses SMD chips which are brighter and more efficient LEDs used rope light. The LED Ribbon is flat and the SMD chip emits light in a more focused, manner over 180 degrees compared with Rope lights that emit light in a

## What are SMD5050 and SMD3528 chips? How do they compare with each other?

SMD chips have high brightness and low power consumption while minimizing their lumen depreciation due to the epoxy resin coating and integral thermal management. The numbers represent the dimensions of the chip, for example the SMD5050 chip is .50mm by .50mm square, uses .24 watts and is mounted on a ribbon that is 1/2" wide. The SMD3528 chip is .35mm by .28mm, consumes .08 watts and is mounted on a 7/16" wide ribbon. Both are available in warm white (3200K), day light (5500K) and RGB. The letters SMD represent the words "Surface Mount Device". All 12 & 24 volt LED Ribbon products are powered using an LED driver. The LED Ribbon with RGB chips requires the use of a controller.



## How many SMD chips per foot? How much power is needed?

Westgate's LED ribbon contains 19 LED chips per foot and they are spaced approximately 7/16" on center. Each foot of SMD3528 tape light consumes 1.5 watts while each foot of SMD5050 tape light consumes 4.4 watts. An LED driver with 12 or 24V DC secondary is required for low-voltage ribbon.

## Can LED ribbon lights be used outside?

Yes, if the ribbon has the proper IP (Ingress Protection) cover to protect it against dust and water. The IP54 and IP65 products work well in damp locations; for example: under eaves. The IP68 rated product can be used for applications with full exposure to rain or submersed in a fountain on a GFCI protected circuit. The IP20 rated product is for interior "dry" applications only.

### Westgate LED ribbon is offered with the following IP ratings

- IP20: Indoor use only
- IP54: Protected against dust and water splashes (limited ingress permitted)
- IP65: Protected against dust and mild water jet (limited ingress permitted)
- IP68: Dust tight and protected against immersion in water.

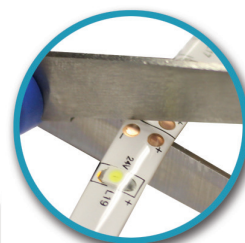
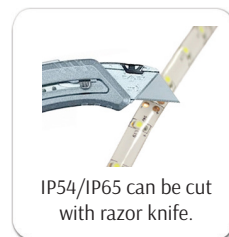


### How often can the Ribbon Lights be cut?

Every 2 to 4 inches for low-voltage product.  
Cut only on the cut lines printed on the ribbon.

### Would it be weatherproof once it is cut?

No, once the ribbon is cut it may not be in contact with moisture unless it's capped and sealed with silicone and encased in heat shrink.



## WESTGATE LED Ribbon Nomenclature

| Voltage | Length | Chip Type    | IP Rating                        | Color Temp                   |
|---------|--------|--------------|----------------------------------|------------------------------|
| R12V    | 16 ft. | D3 = SMD3528 | P20 = Blank                      | CW = Cool White (5000-6000K) |
| R24V    | 98 ft. | D5 = SMD5050 | P54 = Damp Location              | WW = Warm White (2700-3500K) |
|         |        |              | P65 = Wet Location               |                              |
|         |        |              | P68 = Wet Location / Submersible |                              |

The above information is provided without any liability and is subject to change without notification.