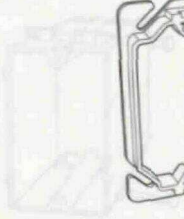


Slater® Plastic Boxes
4" Square Boxes & Covers

S44-21-RAC



RC-2

RC-2

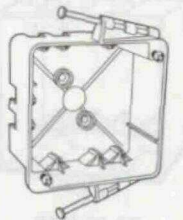


RC-1

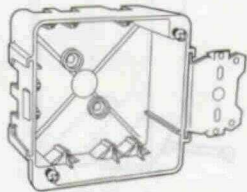
RC-1



RC-1



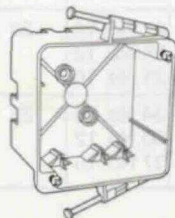
S44-21-RAC



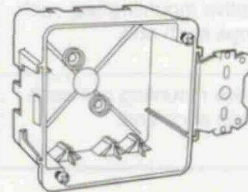
S44-21-SAC



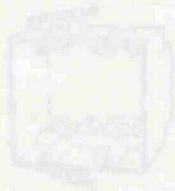
S44-35-RAC



*S44-35-RAC



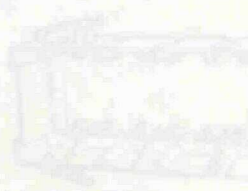
S44-35-SAC



S44-21-RAC



S44-21-SAC

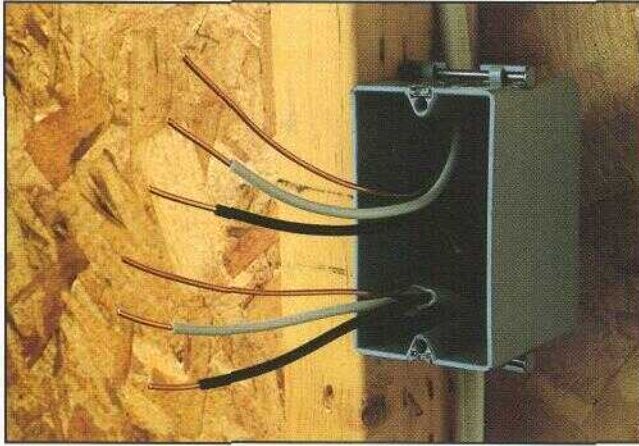


S44-35-RAC

Catalog Number	Cu. In. Vol.	Description	Dimensions (inches)			Wire, Fill (AWG)	Qty. Per Carton
			L	W	D		
Raised Covers with Quick/Click® for 4" Square Boxes							
RC-1	3.2	Single gang device cover with Quick/Click feature.	4 1/4	4 1/4	3/8		100
RC-2	5.3	Two gang device cover with Quick/Click feature.	4 1/4	4 1/4	3/8		100
4" Square Boxes with Threaded Mounting Holes							
*S44-21-RAC	21.0	4" square. Captive mounting nail each end. 3 Auto/Clamps® each end, 2 on side adjacent to nails. 2 #8 mounting screws factory installed.	4 1/4	4 1/4	1 1/2	10 No. 14 9 No. 12 8 No. 10	100
*S44-21-SAC	21.0	4" square. For wood and steel stud mounting. 3 Auto/Clamps each end, 2 on side opposite bracket.	4 1/4	4 1/4	1 1/2	10 No. 14 9 No. 12 8 No. 10	50
*S44-35-RAC	35.0	4" square. Captive mounting nail each end. 3 Auto/Clamps each end, 2 on side adjacent to nails. 2 #8 mounting screws factory installed.	4 1/4	4 1/4	2 3/8	17 No. 14 15 No. 12 14 No. 10	50
*S44-35-SAC	35.0	4" square. For wood and steel stud mounting. 3 Auto/Clamps each end, 2 on side opposite bracket.	4 1/4	4 1/4	2 3/8	17 No. 14 15 No. 12 14 No. 10	50

All boxes are UL Listed.

*UL Classified and ICBO Recognized.



Application

Slater Plastic Boxes, the Contractor's Choice designed with unique labor-saving features, include a complete range of wall, ceiling, and old work boxes for commercial and residential construction applications.

Slater Plastic Wall Boxes meet UL 263 "for fire resistance, for use in fire resistant walls constructed of wood or non-load bearing metal studs and gypsum wallboard for two hours or less classification periods."

The results of UL testing have been reviewed by the International Conference of Building Officials (ICBO) allowing Slater wall and ceiling boxes to be recognized for use in two hour fire rated construction.

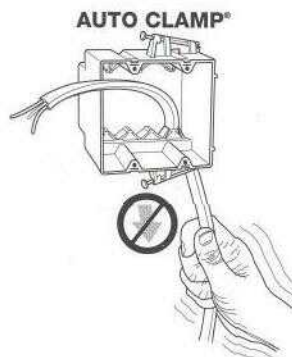
Product Features

Auto/Clamp

Eliminates the need for separate cable clamps as well as the tools usually needed for installation.

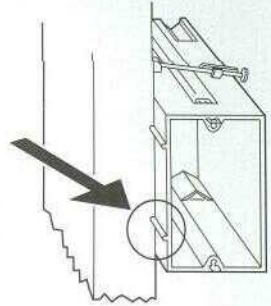
Auto/Clamp® is available on all multigang boxes, old work boxes, 4" square boxes, and 3 1/4" and 4" round ceiling boxes. A major installation advantage with Auto/Clamp is that the clamp is molded as an integral part of the box (there are no separate clamps and screws to install, adjust or tighten). Each cable opening contains an Auto/Clamp, therefore, the non-metallic sheathed cable may be inserted where needed or where most convenient. Auto/Clamp does not take up as much room as conventional clamps, allowing more room for wire and devices – another important feature.

To install the cable, insert stripped or unstripped non-metallic wire into the Auto/Clamp opening and pull through to the desired length. The cable is automatically secured and the installation is complete. There are no other operations for the electrician to perform. Contractors can look forward to saving time and money with every Auto/Clamp plastic box installation.



Location Ribs

Location Ribs enable the installer to quickly and accurately maintain a 1/2" offset. Dual ribs also make it easy to keep the face of the box parallel to the stud. The ribs are .450" long to reduce the chance of the box protruding beyond the 1/2" sheetrock. They project .080" to span the rounded edges of wood studs but will not cause excessive canting of the box when used with thinner wallboard.



Quick/Click®

Fast, easy, and secure installations

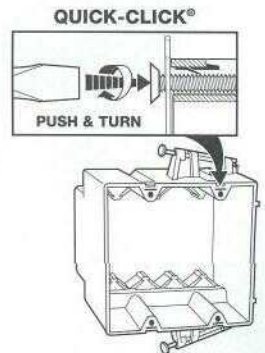
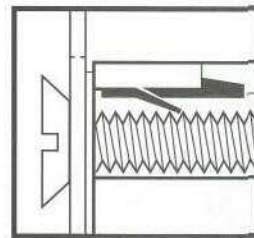
The unique, labor-saving Quick/Click design secures the wiring device quickly and easily. Simply push in the mounting screws with a screwdriver and turn the screw one turn.

With Quick/Click you cannot cross-thread or strip a device mounting screw.

Wall boxes are tested for a minimum 100 lb. total device pull-out resistance.

How Quick/Click Works

The spring steel insert for quick mounting of switches and receptacles is a unique patented feature. (Refer to illustration.) Note how the spring acts as a locking ratchet and allows the screw to be pushed in and then tightened. The screw can only be released by unscrewing it in the conventional fashion.



Quick/Entry

Speeds installation by eliminating need for tools

Another time-saving idea is Quick/Entry, a method that allows you to push stripped or unstripped non-metallic cable into a single gang plastic box without removing knock-outs. Jagged edges usually formed in other boxes are eliminated. Staple wire to stud within 8" of the box (per NEC 370-17(c)) to complete installation.

