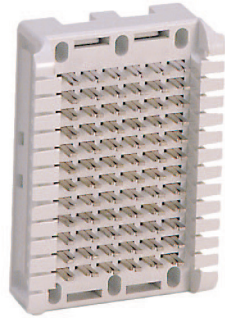
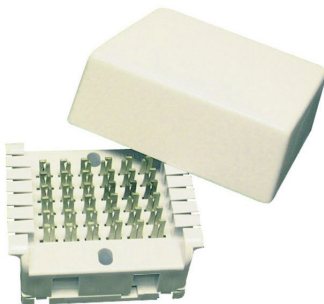


A66B4-3



66B1-6



A66B6-3

### Description

The 66B Series Connecting Blocks are designed for fast and easy termination of incoming cables for key telephone installations. They consist of a molded plastic base in which 6-clip terminals are positioned.

These Connecting Blocks offer increased plant flexibility as they are easily stacked to provide 12 and 24, etc. pair unprotected terminal blocks.

### Dimensions

Model	Number of Pairs	Type of Terminal	Dimensions H x W x D
66B1-6	6	6 Clip	3.88" x 2.75" x 1.25"
A66B4-3	3	6 Clip	2.40" x 2.80" x 1.20"
A66B6-3	3	6 Clip	3.50" x 3.50" x 1.25"



### Product Information

#### Suttle

Part Number	Description
-------------	-------------

66B1-6	6-pair, 6-clip terminal connecting block, single row, single fanning strip
A66B4-3	3-pair, 6-clip terminal connecting block, single row, double fanning strips
A66B6-3	3-pair, 6-clip terminal connecting block, single row, double fanning strips, snap-on cover