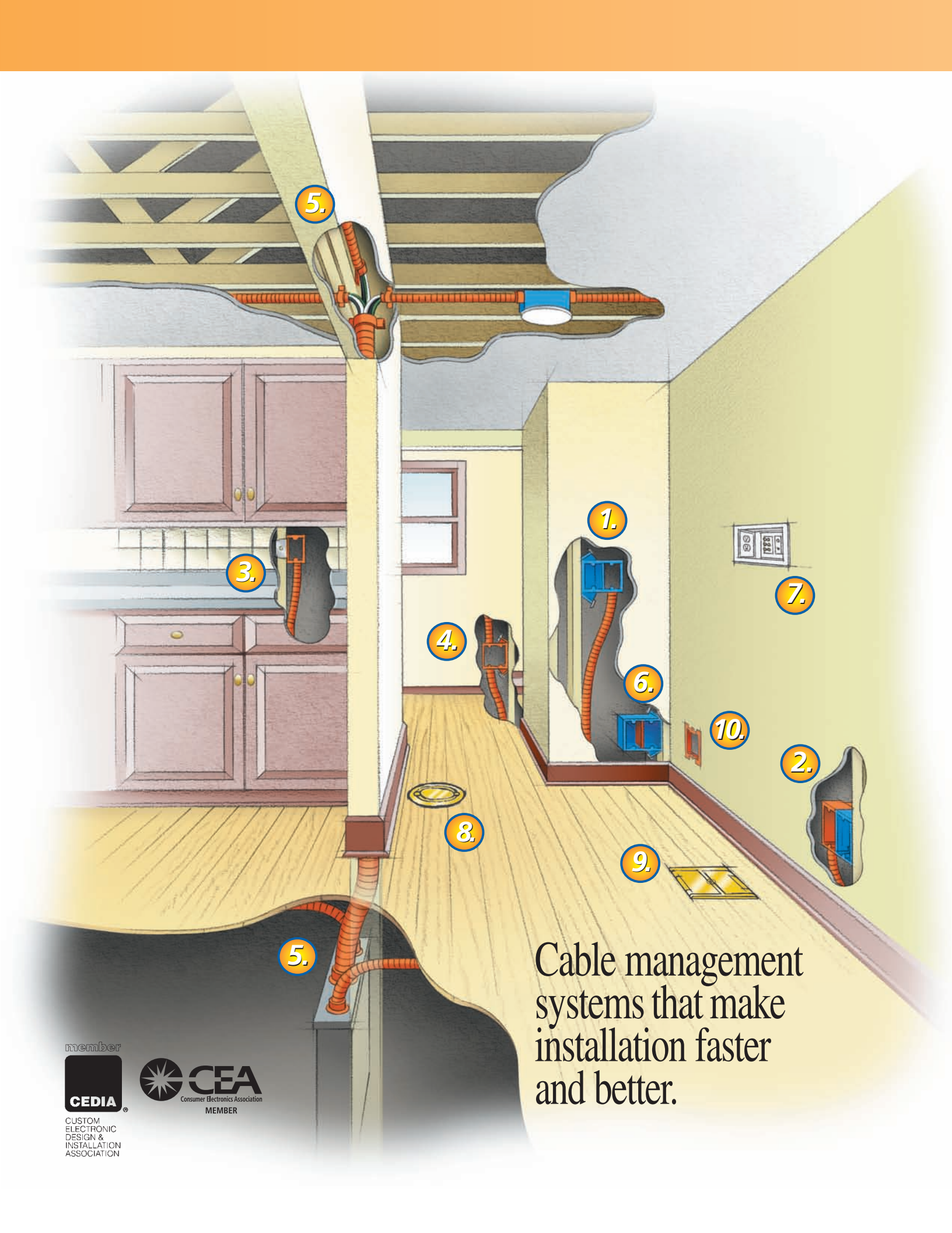


# Carlton® Structured Cable Management Systems





Cable management systems that make installation faster and better.

member



CUSTOM ELECTRONIC DESIGN & INSTALLATION ASSOCIATION





### 1. Dual Voltage Box/Bracket

Here's a smart alternative where you would normally use separate high and low voltage boxes. Designed to fit a standard two-gang faceplate, this component combines an electrical box and low voltage bracket into a single unit for fast, easy installation. No alignment tools are required, and easy nail-on mounting provides precise placement and a professional finished appearance. Resi-Rings accept 3/4" Resi-Gard only. . . . . SC200DV

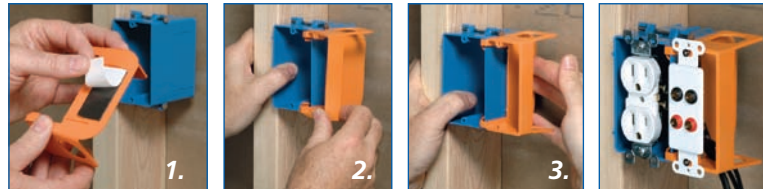


Why waste time mounting, then trying to line up separate high voltage and low voltage boxes, and still end up with something not quite right? Our Dual Voltage Box/Bracket lets you do it all in one fast, easy step with perfect alignment every time.

### Low Voltage Add-On Bracket



This low voltage bracket provides a low voltage outlet next to a previously installed high voltage outlet. Great for both new construction and rework, it attaches easily to most electrical boxes, and is designed to fit a standard two-gang faceplate. Resi-Rings accept 3/4" Resi-Gard only. . . . . SC100SC



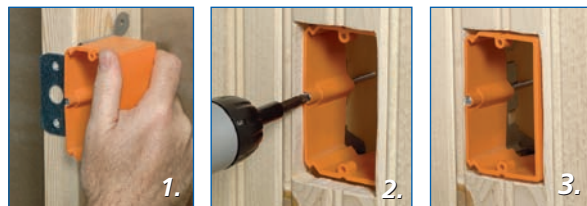
Attaching the Add-On Bracket is a "snap." You just remove the back of the double-sided tape (1), clip the bracket in place (2), and press on the bracket to secure it against the box (3). Allows for the installation of most decora style yoke plates



### 3. Low Voltage Adjustable Brackets

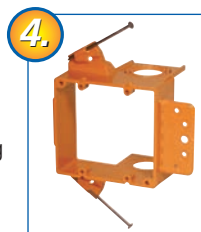
Our Low Voltage Adjustable Brackets are the perfect solution for tile, paneling, or stucco. A bracket allows for quick, easy stud mounting, and a turn of the screw adjusts to any wall thickness. It's great for retrofit/ installation upgrades. Replace the single-gang bracket with a two-gang bracket, or switch services to a high-voltage Adjust-A-Box™.

. . . . . SC100ADJC (shown) and SC200ADJC



Our Low Voltage Adjustable Brackets simplify installation with tile, paneling, or stucco to save you time and effort. Just use the quick-mount bracket to clip it to the stud (1), add a screw for extra support if you want it (2), then use the adjustment screw to accommodate wall thickness (3). Also available in a two-gang version.

### Low Voltage Brackets



Here's the fast installation choice where only low voltage is required. Designed to fit a standard one-, two- or three-gang faceplate, these low voltage brackets feature an easy nail-on mounting or screw-in bracket, while a hard shell provides increased durability and no racking. Resi-Rings accept 3/4", 1", and 1 1/4" Resi-Gard (one-and two-gang versions only). SC100A, SC200A (shown), and SC300A



Our Low Voltage Brackets are open-backed to easily accommodate the bend radiuses required for low voltage cabling and deep devices such as volume controls, while molded-in ports make it easy to connect flexible raceway for future-proofing. Or you can use them to tie off cable to the bracket. They can also be attached to wood or steel studs.



### 5. Resi-Gard® Flexible Raceway And Fittings

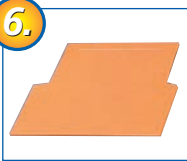
Available in 5 sizes from 3/4" to 2", with factory installed pull tape in sizes 1" to 2", our Resi-Gard Flexible Raceway provides a main chase from the main distribution panel to a secondary hub in the attic or basement. Ideal for easy access to add cable or service upgrades, or leave empty for future expansion.

. . . . . See page 3 for part numbers



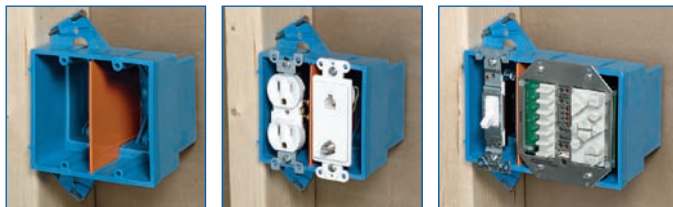
Our complete line of quick-connect couplings, adapters, cable clips, conduit clamps, and solvent cement make for quick, easy professional installation of Resi-Gard Flexible Raceway.

6.



### Dual Voltage Box/Bracket

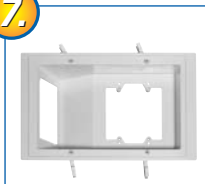
For applications where a combined high and low voltage closed back box is needed, such as placement in a fire-rated wall, we offer our Carlon SuperBlue™ two-, three-, and four-gang wiring boxes with a slip-in-place divider to give you the split box you need for the low voltage outlet. . . . . SCDIV



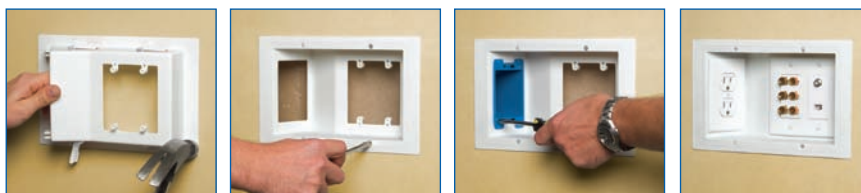
What could be easier than converting one of our Carlon SuperBlue boxes for both high and low voltage use? Just slip the divider into place, and you're ready to go. Great for situations requiring a dual voltage fire-rated box.

### Recessed Dual Voltage 3-Gang Old Work Plate

7.



The New Carlon RDV 3-Gang Old Work Plate has been developed to simplify today's in-home entertainment/networking needs. The box is designed to accommodate the wires, cables and cords used with flat panel display installations. It features a two-gang low voltage opening and a one-gang opening for an outlet/switch box (boxes, devices, and plates not included). SC300PRB



The hi-gloss, recessed design eliminates unsightly wires, cables, and cords, and blends with any décor. The RDV Old Work Plate makes installing flat panel displays faster and easier!

8.



### Drop-in Floor Box

The Carlon Drop-In Floor Box with Brass Cover combines many of the same features in our existing Floor Box line with the strength, durability

and style necessary to accommodate today's residential electrical/telecommunication needs. The Carlon Drop-In Floor Box is the fastest easiest way for contractors to put a floor socket anywhere they need it! It's designed to accommodate high and low voltage applications . . . . . E971FBDIB



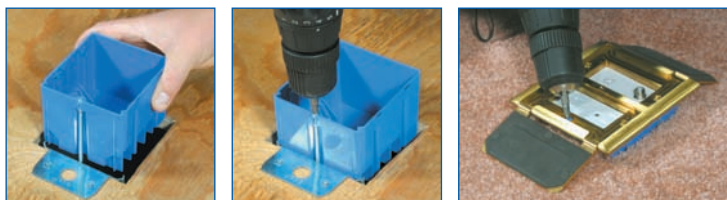
Drill hole in floor using hole saw. Pull romex through floor. Connect receptacle wires to romex. Brass cover snaps into place. Use a small screwdriver to pry open brass cover to plug in appliance.

### Adjust-A-Box® Floor Box

9.



Carlon Adjust-A-Box® Floor Boxes make installing floor outlets faster and easy by providing maximum installation flexibility. The box features a patented adjustment screw designed to adjust the box from 0" to 1-3/4" by simply turning the screw clockwise or counterclockwise, providing a flush mount every time. . . . . B234BFBB



Install clip over subfloor. Screw in to adjust to height of flooring or carpet. Beautiful flush fit every time!

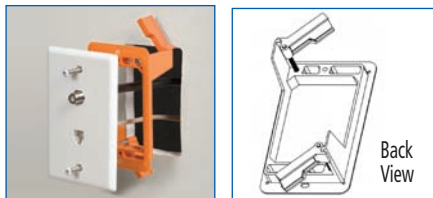
10.



### Old Work Bracket

Carlon Low Voltage Old Work Brackets are specifically designed for the installation of low voltage devices such as cable television, data communications or telephone

jacks in an existing wall. The backless feature provides the space need for the bend radius requirements of coaxial or data/communication cables. It also eliminates the need for metal plates, lags or screws. . . . . SC100RR (shown)and SC200RR



1. Use the holes in the corners to mark the opening.
2. Cut out the drywall.
3. Place box in wall.
4. Secure box to wall.

## Resi-Gard<sup>®</sup> Flexible Raceway

Ideal for providing a main chase from the main distribution panel to a secondary hub in the attic or basement, Resi-Gard nonmetallic flexible raceway is available in 3/4" to 2" diameter sizes with factory installed pull tape in sizes 1" to 2". The raceway is hand bendable, lightweight and easily cut to length to reduce scrap. Bright orange color clearly signifies a low voltage installation.



### Standard Length Coils

Size	Pull Tape	Part No.	Reel Length	Prod. Wt. (lbs.) Reel
3/4"	Empty*	SCE4X1-100	100	11.5
1"	900 lbs.	SCF4X1C-100	100	17.9
1 1/4"	900 lbs.	SCG4X1C-100	100	21.5
1 1/2"	900 lbs.	SCH4X1C-50	50	11.2
2"	900 lbs.	SCJ4X1C-100	50	13.4

\*If installing own tape, a lubricated polyester is recommended.

### Standard Length Reels\*

Size	Pull Tape	Part No.	Reel Length	Prod. Wt. (lbs.) Reel
3/4"	Empty	SCE4X1-1000	1000	115.0
1"	900 lbs.	SCF4X1C-1500	1500	268.5
2"	900 lbs.	SCJ4X1C-500	500	133.5

\* Made to order

## Resi-Gard<sup>®</sup> Fittings



### Quick Connect Coupling

Part No.	Size	Std. Ctn. Qty.	Std. Ctn. Wt. (lbs.)
SCA240E	3/4"	25	.783
SCA240F	1"	20	.972



### Male Terminal Adapter\*

Part No.	Size	Std. Ctn. Qty.	Std. Ctn. Wt. (lbs.)
SCE943G	1 1/4"	50	3
SCE943H	1 1/2"	25	2.5
SCE943J	2"	50	6.8



### Quick Connect Threaded Adapter

Part No.	Size	Std. Ctn. Qty.	Std. Ctn. Wt. (lbs.)
SCA243E	3/4"	25	.633
SCA243F	1"	20	.778



### Standard Couplings\*

Part No.	Size	Std. Ctn. Qty.	Std. Ctn. Wt. (lbs.)
SCE940G	1 1/4"	30	3.5
SCE940H	1 1/2"	25	3.9
SCE940J	2"	30	5.2

\* Must be cemented to Resi-Gard<sup>®</sup> Flexible Raceway using ONLY Resi-Gard Solvent Cement



### Quick Connect Snap-In Adapter

Part No.	Size	Std. Ctn. Qty.	Std. Ctn. Wt. (lbs.)
SCA253E	3/4"	25	.783
SCA253F	1"	20	.918



### PVC Lock Nut

Part No.	Size	Std. Ctn. Qty.	Std. Ctn. Wt. (lbs.)
▶ LT9LE	3/4"	700	4
▶ LT9LF	1"	600	4

## Dual Voltage Box/Bracket\*



SC200DV

- Dual Voltage Capability
- Accepts a two-gang face plate.
- 3/4" Resi-Rings
- Backless Design accommodates large/deep low voltage devices.
- Eliminates cutting the backs off Electrical Boxes.
- Accommodates bend radius requirements for low voltage cabling.
- Provides ample space for installation.

Part No.	Cover	Volume	Std. Ctn. Qty.	Std. Ctn. Wt. (lbs.)
SC200DV	1-Gang	20.5 cu. in	16	6.4



\*U.S. Patent D463,376

## Low Voltage Add-On Bracket\*



SC100SC

- Dual Voltage Capability accommodates high and low voltage devices in the same box.
- Attaches to virtually any nonmetallic electrical box as long as there's a side for the tape to stick to.
- Accepts a two-gang face plate.
- 3/4" Resi-Rings
- Allows for the installation of most decora style yoke plates

Part No.	Size	Std. Ctn. Qty.	Std. Ctn. Wt. (lbs.)
SC100SC	1-Gang	24	2.3



\*U.S. Patent D459,312 U.S. Patent 6,710,245  
U.S. Patent 6,872,884

## Low Voltage Adjustable Brackets\*



SC100ADJC

- Accommodates varying finished wall thicknesses – ideal for wood paneling, tile or stucco walls.
- With the turn of a screw, adjust to any wall thickness.
- Steel Mounting Bracket provides a secure mount.
- Backless Design accommodates large/deep low voltage devices.
- Eliminates cutting the backs off Electrical Boxes.
- Accommodates bend radius requirements for low voltage cabling.
- Provides ample space for installation.
- Removable Bracket and Interchangeable Mounting Bracket – upgrade from a one-gang to a two-gang anytime.

Part No.	Size	Std. Ctn. Qty.	Std. Ctn. Wt. (lbs.)
SC100ADJC	1-Gang	24	7.5
SC200ADJC	2-Gang	20	6.9



\*U.S. Patent 5,289,934

## Low Voltage Divider Plate



SCDIV

Part No.	Std. Ctn. Qty.	Std. Ctn. Wt. (lbs.)
SCDIV	50	2.2

For use with Carlon® SuperBlue™ boxes only (Refer to page 11)

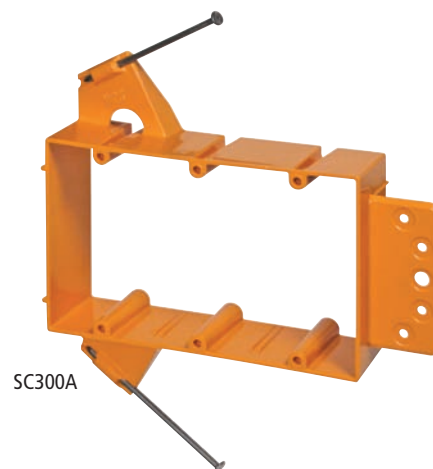
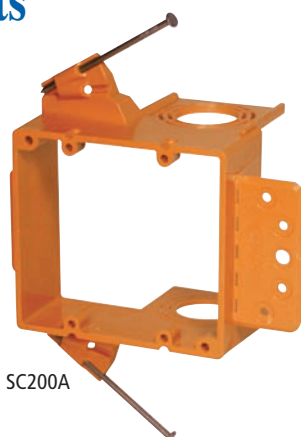
## Mud Ring (4" sq. 1/2" Raised Cover)



Part No.	Size	Std. Ctn. Qty.	Std. Ctn. Wt. (lbs.)
SCA410	1-Gang	20	1.54

NOTE: Classified for two hour fire resistive wall assemblies when used with Two-Gang Quick Connect Outlet and Switch Boxes

## Low Voltage Brackets\*



### One-and two-gang versions only

- Backless Design accommodates large/deep low voltage devices
- Eliminates cutting the backs off Electrical Boxes.
- Accommodates bend radius requirements for low voltage cabling
- Provides ample space for installation
- Mount Flange for steel stud application
- Resi-Rings with Concentric Knockouts
- Accepts 3/4", 1", and 1-1/4" Resi-Gard.
- Horizontal Mounting Bracket (one-gang only)
- Breakaway Drywall Support Flange provides easy alignment for 1/2" drywall
- Screw mount option
- Breakaway Vertical Mounting Flange
- Breakaway feature allows the use of the Low Voltage Add-On Bracket

Part No.	Size	Resi-Rings	Std. Ctn. Qty.	Std. Ctn. Wt. (lbs.)
SC100A	1-Gang	3/4", 1", 1-1/4"	24	5.3
SC200A	2-Gang	3/4", 1", 1-1/4"	24	7.7
SC300A	3-Gang	—	5	1.6



\*U.S. Patent D457,140  
U.S. Patent D462,664  
U.S. Patent 6,812,405

\*©Lamson & Sessions

## Old Work Brackets



- Rectangular Flange for faster/easier installation.
- Shallow Bracket – Less material, easier to work with.
- Marking hole for wall opening.
- Thinner Flange for less protrusion on the wall.
- SINGLE GANG ONLY – Clamps stop at center point to prevent the bracket from twisting or bending out of the wall.

Part No.	Size	Std. Ctn. Qty.	Std. Ctn. Wt. (lbs.)
SC100RR	1-Gang	12	1.4
SC200RR	2-Gang	6	.9



# Recessed Dual Voltage 3-Gang Old Work Plate

## Recessed Dual Voltage 3-Gang Old Work Plate



The New Carlon RDV 3-Gang Old Work Plate, part number **SC300PRB**, has been developed to simplify today's in-home entertainment/networking needs. The box is designed to accommodate the wires, cables and cords used with flat panel display installations. It features a two-gang low voltage opening and a one-gang opening for an outlet/switch box (boxes, devices, and plates not included). The hi-gloss, recessed design eliminates unsightly wires, cables, and cords, and blends with any décor. The RDV Old Work Plate makes installing flat panel displays faster and easier!





# Recessed Dual Voltage 3-Gang Old Work Plate

## Features:

- 3-Gang dual service capability: Accommodates (1) high and (2) low voltage services using one plate (*boxes, devices, and plates not included*)
- Recessed low profile design: Eliminates unsightly wires and plug heads
- Universal 1-gang outlet/switch opening: Select the size box you need
- Pre-assembled box and frame: Reduces labor time and saves money
- Shallow design: Provides ample room behind the dry wall and between the studs, and accommodates cable bend requirements
- 4 Swing out clamps: Locks the plate securely to the wall – horizontal or vertical mount
- Superior hi-gloss, paintable finish: Professional appearance, and blends with any décor
- Nonmetallic, ABS material: Lightweight and easy to handle

## Installation

Please read these instructions completely before attempting installation.

**IMPORTANT!** Before attempting installation be sure power is off by removing the fuse or switching the circuit breaker to "off". Make sure the Recessed Dual Voltage plate is installed in accordance with the National Electrical Code (NEC) and local codes.



1. Locate studs and determine if they are 16" or 24" apart. If 16" apart, measure a maximum of 3" from edge of stud to determine plate location. If 24" apart, center plate between studs. Note: Low voltage side must be 3" from stud.
2. Place SC300PRB face down against the wall. Using a hammer, tap around the edge of the plate to mark area to be cut out (Fig. 1). Remove plate from wall, a line should be visible on the drywall. Cutout should be 6.25" x 9.25" approximately.
3. Carefully cut out area of drywall with a utility knife or drywall saw.
4. Place SC300PRB in wall and secure by tightening down all four Zip-Mount retainers (Fig. 2).
5. Select device and outlet/switch box, part number B114R (14 cu. in.) or B120R (20 cu. in.), based on wire fill needs (Fig. 3).
6. Insert wires through boxes (B114R or B120R, and SC300PRB). Make sure high and low voltage wires do not come in contact with one another.
7. Install Carlon Old Work Zip Box, model B114R or B120R (Fig. 4).
8. Install receptacle and faceplate per manufacturer's instructions (Fig. 5).
9. Install low voltage devices and faceplate per manufacturer's instructions (Fig. 6 and Fig. 7).

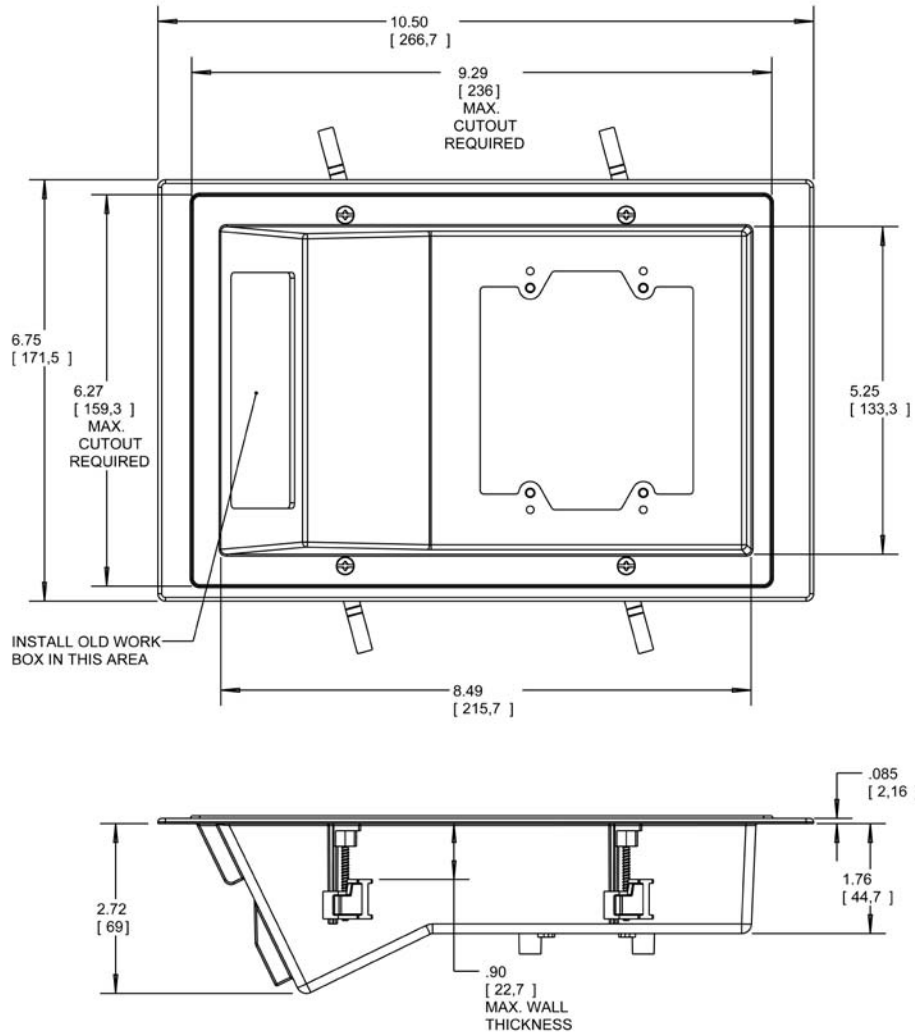
**Note:** When preparing for later installation of low voltage devices, use a 2 gang blank plate to cover wall opening for a clean finished look.



# Recessed Dual Voltage 3-Gang Old Work Plate

## Specifications

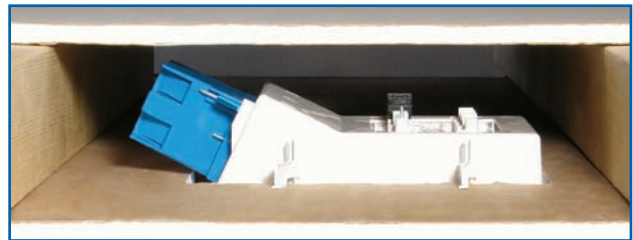
Part Number	Description	Std. Carton Qty.	Std. Carton Wt. (lbs.)
SC300PRB	RDV 3-Gang Old Work Plate	20	11.62



## Installed



Low voltage devices and receptacle not included

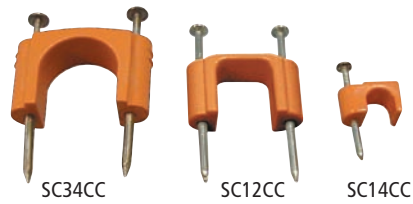


Top view showing ample room between drywall and studs

## Cable Clips

Pre-installed nails provide fast and easy installation for either a single cable, 2-3 cables, or 1 bundled cable.

Size	Part No.	Standard Bag Quantity	Std. Ctn. Qty.	Std. Ctn. Wt. (lbs.)
1/4"	SC14CC	1 ea. (Equals one bag of 100 Clips)	10 Bags of 100	2.23
1/2"	SC12CC	1 ea. (Equals one bag of 25 Clips)	10 Bags of 25	2.31
3/4"	SC34CC	1 ea. (Equals one bag of 10 Clips)	20 Bags of 10	2.96



## Conduit Clamps

Designed to secure Resi-Gard raceway or bundled cable.

Size	Part No.	Standard Bag Quantity	Std. Ctn. Qty.	Std. Ctn. Wt. (lbs.)
3/4"	SCE977EC	1 ea. (Equals one bag of 5 Clamps)	20 Bags of 5	1.5
1"	SCE977FC	1 ea. (Equals one bag of 5 Clamps)	12 Bags of 5	1.3
1 1/4"	SCE977GC	1 ea. (Equals one bag of 5 Clamps)	8 Bags of 5	1.1
1 1/2"	SCE977HC	1 ea. (Equals one bag of 5 Clamps)	6 Bags of 5	1.0
2"	SCE977JC	1 ea. (Equals one bag of 5 Clamps)	6 Bags of 5	1.5



NOTE: Each clamp requires 2 screws, 2 nuts, and/or 2 bolts

## Resi-Gard® Solvent Cement

Recommended pipe application and sizes	Set-up time (Evaporation Rate)	Recommended installation temperature	Lap Shear @ 73°F	Viscosity at 75° as manufactured	
For use with Resi-Gard®, Riser-Gard®, P&C Flex®, and Carlon PVC fittings. <b>Up through 6" diameter.</b>	10°-30°F Use extra caution 30°-50°F 5-6 minutes 50°-70°F 3-4 minutes 70°-90°F 1-2 minutes	40° to 100°F	2 hrs. 350 psi 16 hrs. 800 psi 72 hrs. 1,500 psi	500-900 cps	
Part No	Size	Applicator	Description	Ctn. Qty.	Ctn. Wt. (lbs.)
VC9963SC	Pint	Brush	Resi-Gard® Solvent Cement Clear	24	28.0

Meets ASTM D-2564



## Resi-Gard® Cutters

Ideal for fast, smooth field cuts for up to 1" diameter Resi-Gard nonmetallic flexible raceway. The large PVC Cutter is ideal for cuts up to 2" diameter nonmetallic rigid and flexible raceway.

### Small Cutter

For fast, smooth field cuts of 1/2" through 1" innerduct.



Part No.	Size	Std. Ctn. Qty.
CC120B	8"	10

### Large Cutter

For clean cuts of conduit 1/2" through 2".



Part No.	Size	Std. Ctn. Qty.
CC122	17 1/2"	1

## Low Voltage Adjustable Floor Bracket w/ Cover



The Carlon Low Voltage Adjustable Floor Bracket is specifically designed for the low voltage, structured cabling market. . . ***the floor bracket is industry standard orange to identify low voltage applications, the open design provides the space needed for low voltage bend radius requirements, and the Leviton QuickPort® Quad 106® Insert provides up to four low voltage outlet ports.*** The Carlon Low Voltage Adjustable Floor Bracket is ideal for any residential or commercial low voltage application.

The floor bracket also features a patented screw design allowing it to be adjusted to most finished floor heights by simply turning the screw clockwise or counterclockwise and adjusting flush to the floor.

The floor bracket kit comes complete with a nonmetallic (white or ivory) or brass cover, a Leviton QuickPort Quad 106 Insert, new work and old work metal mounting brackets, and mounting screws.

***Carlon Structured Cable Management Systems...Your Total Systems Solution!***

- White, Ivory, or Brass Cover
- Orange – Identifies Low Voltage Installations
- Open Design Floor Bracket – Accommodates Low Voltage Bend Radius Requirements
- Patented Adjustable Screw – Bracket Adjusts to Most Finished Floor Depths
- Leviton QuickPort Quad 106 Insert – Install up to 4 Low Voltage Inserts
- Two-Door Design
- C-UL-US Listed

Part No.	Cover	Std. Ctn. Qty.	Std. Ctn. Wt. (lbs.)
SC100FBWC	Nonmetallic – White	8	5.62
SC100FBVC	Nonmetallic – Ivory	8	5.62
SC100FBBC	Brass	8	13.78

### Installation:



***Install clip over subfloor.***



***Screw in to adjust to height of flooring or carpet.***



***Beautiful flush fit every time!***

# Adjust-A-Box® Residential Floor Boxes

## 1-, and 2-Gang Adjustable

**NEW!**



**Double-Gang,  
with Brass Cover**

*\*Devices not included*

\*U.S. Patent 5,289,934



**Single-Gang,  
with Brass Cover**

Carlson Adjust-A-Box® Floor Boxes make installing floor outlets faster and easy by providing maximum installation flexibility. The box features a patented adjustment screw designed to adjust the box from 0" to 1-3/4" by simply turning the screw clockwise or counterclockwise, providing a flush mount every time.

Covers are able in two styles, nonmetallic and brass, and feature two hinged doors to protect unused devices, and keep out dust and scrubwater. Because the doors are attached, they won't get lost or misplaced while the outlet in use.

The Adjust-A-Box® is available in two sizes, single-gang and double-gang. The single-gang box has a 20 cubic inch capacity and includes a duplex receptacle, and the double-gang box has as 34 cubic inch capacity, and comes with a divider for dual voltage capabilities.

Carlson Adjust-A-Box® Residential Floor Boxes are ideal for residential and home office applications and provide a clean, aesthetically pleasing floor outlet anywhere you need it.

## Features

- Patented adjustment screw that adjusts depth (from 0" to 1 3/4")
- Available with nonmetallic and brass covers
- Covers have two (non-removable) hinged doors
- Solid brushed brass covers with a light lacquer finish for extra protection
- Nonmetallic covers are available in white and ivory
- Two-Gang version features dual service capabilities (requires use of dual service divider)
- Integral cable clamps
- Ideal for new work and retrofit applications
- UL listed
- UL scrub water tested
- 2 hour fire classification

# Adjust-A-Box® Residential Floor Boxes

## Installation



Install clip over subfloor.



Screw in to adjust to height of flooring or carpet



Beautiful flush fit every time!

## Specifications



Part Number	Size	Description	Cubic In.	Std. Ctn. Qty.	Std. Ctn. Wt. (lbs.)
B121BFBRW	One-Gang	Residential Floor Box w/ Nonmetallic White Cover	20	8	7.02
B121BFBR	One-Gang	Residential Floor Box w/ Nonmetallic Ivory Cover	20	8	7.02
B121BFBB	One-Gang	Residential Floor Box w/ Brass Cover	20	8	14.50
B234BFBB	Two-Gang	Two-Gang Residential Floor Box w/ Brass Cover	34	4	9.976

### Kits include:

#### Single-Gang

##### Ivory/White Cover:

- Two (2) 6-32x1 flat head machine screws
- Four (4) #6 1-1/4 self-tapping flat head screws
- Two (2) #6 1-5/8 drywall screws
- One (1) cover plug
- One (1) New Work Bracket
- One (1) Old Work Bracket
- One (1) 20 cubic in. UL Listed Floor Box
- One (1) UL Listed Brass Floor Cover
- One (1) short shank receptacle
- One (1) tube Dow Corning #4 sealant
- Installation instructions

##### Brass Cover:

- Two (2) 6-32x1 brass plated flat head machine screws
- Four (4) #6 1-1/4 self-tapping flat head screws
- Two (2) #6 1-5/8 drywall screws
- One (1) New Work Bracket
- One (1) Old Work Bracket
- One (1) 20 cubic in. UL Listed Floor Box
- One (1) UL Listed Brass Floor Cover
- One (1) short shank receptacle
- Green ground wire
- Installation instructions



#### Double-Gang

- One (1) New Work Bracket
- One (1) Old Work Bracket
- One (1) 34 cubic in. UL Listed Floor Box
- One (1) Dual Voltage Divider
- One (1) UL Listed Brass Floor Cover
- Four (4) #6-32x1 " flat head machine screws
- Four (4) #6 x1-1/4 " flat head self-tapping screws
- Two (2) #6x1-5/8" square drive trim head screws
- Green ground wire
- Installation instructions



\*Devices not included

## Drop-In Floor Box

**NEW!**

The Carlon Drop-In Floor Box with Brass Cover combines many of the same features in our existing Floor Box line with the strength, durability and style necessary to accommodate today's residential electrical/telecommunication needs.

The Carlon Drop-In Floor Box is the fastest easiest way for contractors to put a floor socket anywhere they need it! It's designed to accommodate high and low voltage applications and comes complete with everything needed for installation - *Floor box, Brass Cover, hole saw, wired receptacle, two-hole low voltage plate, blank plate, mounting screws, and wire nuts.*

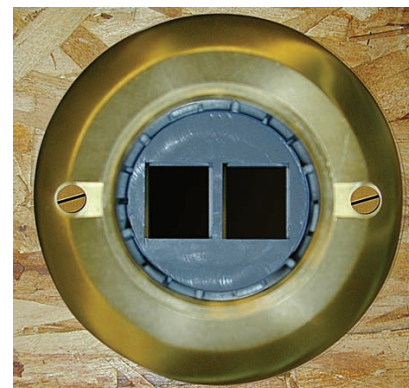
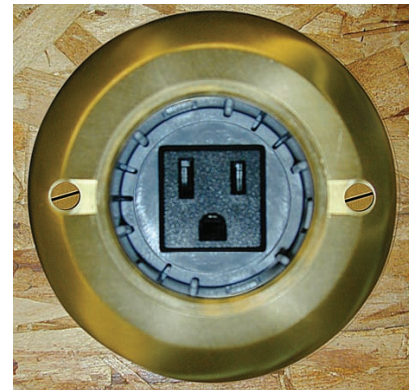


### Installed:

Note: The Drop-In Floor Box is available with or without a hole saw.

### Features:

- Single hole installation
- Solid brass cover has a light lacquer finish to resist wear - Ideal for high traffic areas
- Accommodates high and low voltage applications
- Includes single gang grounded receptacle, low voltage telephone/cable plate (data jacks not included), and blank plate for custom installations
- Eliminates the need for extension cords
- Superior aesthetics - Ideal for home offices and entertainment rooms
- C-UL-US Listed Nonmetallic Outlet Box 655A



# Drop-In Floor Box



## Installation



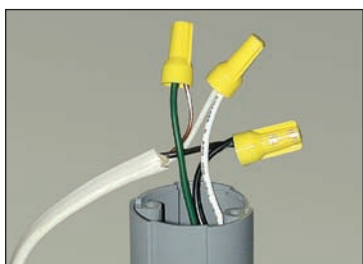
**1.** Cut 2-3/8" hole through carpeting before using hole saw.



**2.** Drill hole in floor using hole saw.



**3.** Pull romex through floor.



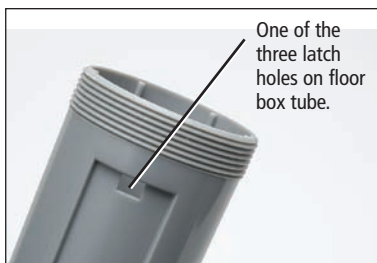
**4.** Connect receptacle wires to romex. Be sure to match wire color(s).



**5.** Secure wire clamp on bottom of tube.



**6.** Brass cover snaps into place. Use a small screwdriver to pry open brass cover to plug in appliance.

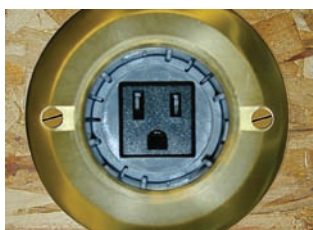
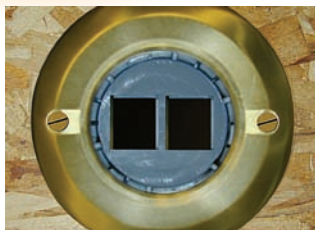


**7.** Align the three latches on the low voltage plate with the three latch holes in the round floor box tube



**8.** Remove receptacle by pressing three tabs located on side of tube. Remove receptacle by pressing three tabs located on side of tube.

## Installed



## Specifications

Part Number	UPC Code	Description	Std. Carton Qty.	Std. Carton Wt. (lbs.)
E971FBDI	034481186601	Drop-In Floor Box w/Hole Saw	5	6.5
E971FBDIB	034481189459	Drop-In Floor Box without Hole Saw	20	17.6

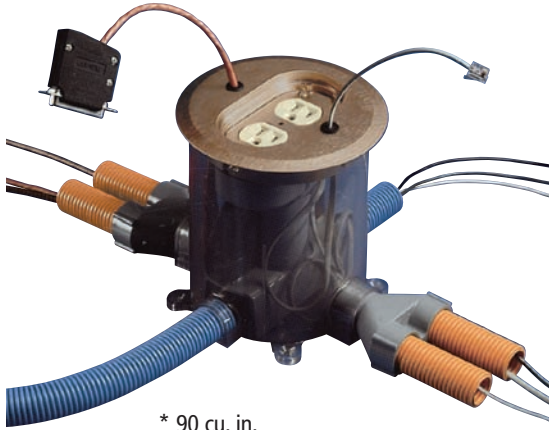


## Round Floor Box and Covers

**UL** US  
LISTED  
E42728  
Except where noted by \*\*

**SF**  
LR31146  
Except where noted by ▶

### Main Base



\* 90 cu. in.  
\* (2) 1" and (2) 3/4" hubs

### Floor Box Base – Grey

Part No.	Std. Ctn. Qty.	Std. Ctn. Wt. (lbs.)
E971FB	10	15.6

### Multi-Service Divider Kit – Grey

Part No.	Std. Ctn. Qty.	Std. Ctn. Wt. (lbs.)
E973K	10	3

### 3/4" Y-Fitting – Grey

Part No.	Std. Ctn. Qty.	Std. Ctn. Wt. (lbs.)
**E972Y	10	2.1

Note: UL Listed

### Metal Cover Adapter – Grey

Part No.	Std. Ctn. Qty.	Std. Ctn. Wt. (lbs.)
▶E97ABR2	10	3.3

### Cover Ring – Clear

Part No.	Std. Ctn. Qty.	Std. Ctn. Wt. (lbs.)
**▶E97CCR	10	1.1

\*Accepts 3 7/8" diameter plates

### Reducer Plugs

Part No.	Size	Std. Ctn. Qty.	Std. Ctn. Wt. (lbs.)
E971C	3/4" x 1/2"	100	2.1
E971D	1" x 3/4"	100	3.2

- Nonmetallic PVC construction, watertight gasket, and corrosion-resistant hardware assure long life and reliable performance even in harsh and/or corrosive environments.
- Brass and an assortment of nonmetallic covers are available for a variety of applications.
- The same box depth simplifies ordering and reduces inventory.
- For tile and carpet applications.

- Concrete tight and suitable for any on grade/below grade application; concrete or wood floor construction approved.
- Y-connector (E972Y) allows you to feed parallel runs of 3/4" conduit or to feed in/out from the same side for increased wiring flexibility and faster installation.
- PVC molded ports and reducer plugs included.
- Accepts 1/2", 3/4", and 1" conduit, tubing or raceway.
- UL scrub water tested.

## Covers



### Brass Two Door Duplex Cover

Part No.	Std. Ctn. Qty.	Std. Ctn. Wt. (lbs.)
▶E97BR2	5	7



### Brass Two Door Dual Service (Divider Kit included)

Part No.	Std. Ctn. Qty.	Std. Ctn. Wt. (lbs.)
E97BR2D	5	9.2



### Brass Duplex/GFCI Cover

Part No.	Std. Ctn. Qty.	Std. Ctn. Wt. (lbs.)
▶E97BR	5	7



### Brass 1 1/4" NPS/Single Receptacle Cover

Part No.	Std. Ctn. Qty.	Std. Ctn. Wt. (lbs.)
▶E97BRG	5	7.5



### Nonmetallic Covers with 1 1/4" NPS Opening

Part No.	Color	Std. Ctn. Qty.	Std. Ctn. Wt. (lbs.)
▶E97SSRS	Slate	10	3.8
▶E97SSRB	Brown	10	3.8
▶E97SSRC	Caramel	10	3.8

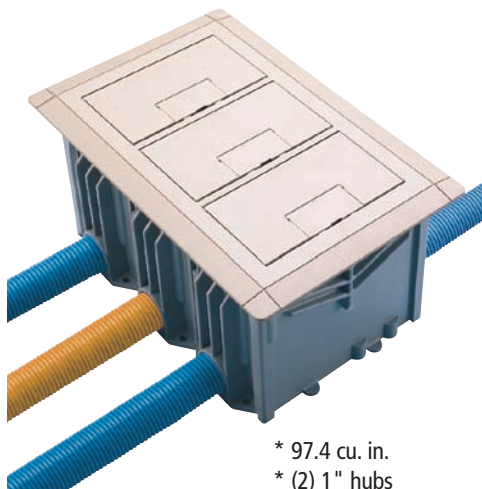


### Nonmetallic Designer Series Duplex Receptacle Flush Mount Covers

Part No.	Color	Std. Ctn. Qty.	Std. Ctn. Wt. (lbs.)
▶E97DSB	Brown	10	5.8
▶E97DSC	Caramel	10	5.7
▶E97DSI	Ivory	10	5.2
▶E97DSS	Slate	10	5.6
▶E97DST	Taupe	10	5.7



## Rectangular Floor Box and Covers



\* 97.4 cu. in.  
\* (2) 1" hubs

- Covers require no adjusting collar. Two screws assure a flush, secure installation.
- Nonmetallic PVC construction, watertight gasket, and corrosion-resistant hardware assure long life and reliable performance even in harsh and/or corrosive environments.
- One consistent box depth simplifies ordering time and reduces inventory.
- Saves time and money on installations with simple saw cut to floor level.
- Concrete tight and suitable for any on grade/below grade application; concrete or wood sub-floor construction approved.
- Convenient cubic inch capacity markings on inside allow for easy inspection.
- PVC molded ports and reducer plugs included.
- Accepts 1/2", 3/4", and 1" conduit, tubing or raceway.
- Rectangular sides are drillable.
- For tile and carpet applications.
- Cover options include solid brass or thermoplastic (brown, slate, and caramel).
- UL scrub water tested.

## Main Base

### Rectangular Floor Box – Grey

Part No.	Std. Ctn. Qty.	Std. Ctn. Wt. (lbs.)
E976RFB	3	7

### Reducer Plugs

Part No.	Size	Std. Ctn. Qty.	Std. Ctn. Wt. (lbs.)
E971C	3/4" x 1/2"	100	2.1
E971D	1" x 3/4"	100	3.2

## Activation Kit

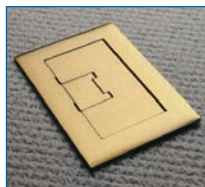
Part No.	Material	Std. Ctn. Qty.	Std. Ctn. Wt. (lbs.)
E976AK2	PVC	3	2.47



Activation kit provides components to accommodate all standard power, data, and communications devices plus a divider to separate power from data and communications – all in a single SKU. Device yokes can be adjusted to store excess cord in the box.

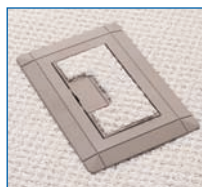
## Covers

### Brass



Part No.	Size	Std. Ctn. Qty.	Std. Ctn. Wt. (lbs.)
E9761BR	Single-Gang	3	7.0
E9762BR	Double-Gang	3	10.0
E9763BR	Triple-Gang	3	12.0

### Nonmetallic Cover/Carpet Flange



Part No.	Size	Std. Ctn. Qty.	Std. Ctn. Wt. (lbs.)
E9761*	Single-Gang	3	1.7
E9762*	Double-Gang	9	8.5
E9763*	Triple-Gang	6	7.5

\*Add suffix for color: B = Brown, C = Caramel, S = Slate

## Adjust-A-Box® Switch and Outlet Boxes



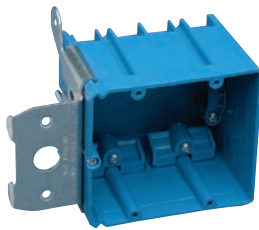
- Patented adjustment screw that adjusts from 0" to 1-3/4"
- Ideal for new work or retrofit applications
- Available in backed box or backless bracket designs
- Upgrades made easy
- Nonmetallic and durable
- UL Listed
- Meets NEMA OS-2



### One-Gang

Part No.	Volume (cu. in.)	Description	Std. Ctn. Qty.	Std. Ctn. Wt. (lbs.)
B121ADJ	21	One-Gang Adjustable Wall Box	24	10

NOTE: Classified for two hour or less fire resistive wall assemblies



### Two-Gang

Part No.	Volume (cu. in.)	Description	Std. Ctn. Qty.	Std. Ctn. Wt. (lbs.)
B234ADJC	34	Two-Gang Adjustable Wall Box w/ Range Knockout	16	8.5
B234ADJ	34	Two-Gang Adjustable Wall Box	16	8.5

## Quick Connect Outlet and Switch Boxes



### Single-Gang – 16 Cu. In.

Part No.	Size	Std. Ctn. Qty.	Std. Ctn. Wt. (lbs.)
† A58381D	3" x 2 1/4" x 3" (1/2" KO's)	25	4.6
† A58381E	3" x 2 1/4" x 3" (3/4" KO's)	25	4.6

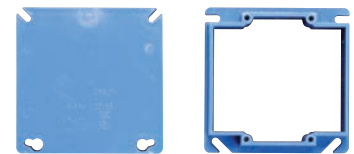
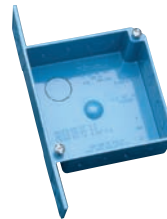


### Single-Gang – Covers

Part No.	Size	Cu. in.	Std. Ctn. Qty.	Std. Ctn. Wt. (lbs.)
A410	1/2"	3.5	100	7.7
A411	5/8"	4.2	50	4.6
A412	3/4"	5.0	50	5.1
A413	1"	6.6	40	5.0
A414	1-1/2"	8.1	30	4.4

### 4 Inch Square – 20 Cu. In.

Part No.	Size	Std. Ctn. Qty.	Std. Ctn. Wt. (lbs.)
† A52151D	4" x 4" x 1 1/2" (1/2" KO's)	100	22.6
† A52151E	4" x 4" x 1 1/2" (3/4" KO's)	100	22.6
† A521DE	4" x 4" x 1 1/2" (1/2" & 3/4" KO's)	100	22.6



### 4 Inch Square – 30.3 Cu. In.

Part No.	Size	Std. Ctn. Qty.	Std. Ctn. Wt. (lbs.)
† A52171D	4" x 4" x 2 3/8" (1/2" KO's)	25	7.6
† A52171E	4" x 4" x 2 3/8" (3/4" KO's)	25	7.6
† A5217DE	4" x 4" x 2 3/8" (1/2" & 3/4" KO's)	25	7.6



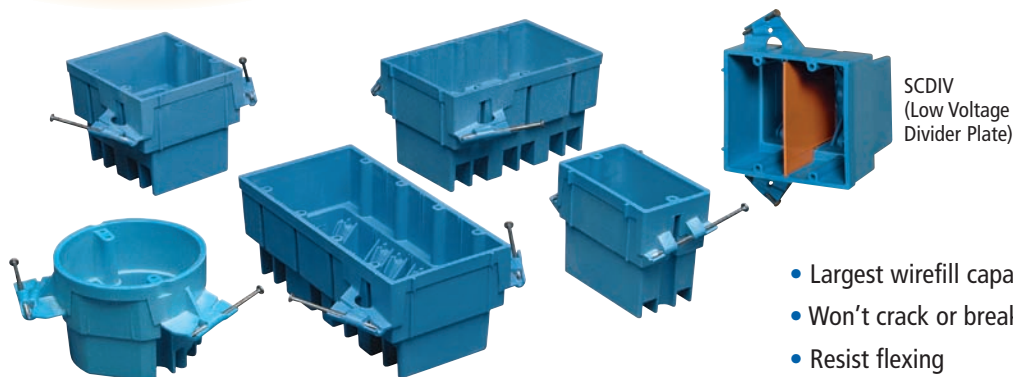
### Two-Gang – Covers

Part No.	Size	Cu. in.	Std. Ctn. Qty.	Std. Ctn. Wt. (lbs.)
A400	Blank	–	100	7.7
A420	1/2"	6.1	75	5.0
A421	5/8"	7.4	50	4.2
A422	3/4"	8.8	50	4.8

- Classified for two hour fire resistive ceiling assemblies
- † Suitable for masonry walls & Classified for two hour fire resistive wall assemblies.

# More Great Carlon Products

## Carlon® SuperBlue™ Boxes and Divider



SCDIV  
(Low Voltage  
Divider Plate)

Part No.	Description	Cu. in.	Std. Ctn. Qty.	Std. Ctn. Wt. (lbs.)
• BH122A	Single-Gang Wall Box	22.0	100	31.3
• BH235A	Two-Gang Wall Box	34.6	48	21.3
• BH353A	Three-Gang Wall Box	52.0	24	14.0
• BH464A	Four-Gang Wall Box	69.0	24	17.4
† BH525A	Ceiling Box	24.5	48	19.5
SCDIV	Low Voltage Divider Plate	–	50	2.2

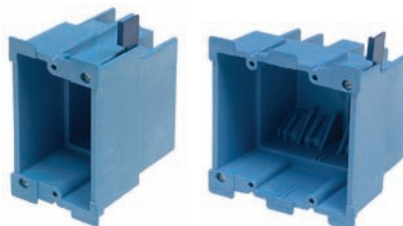
• Classified for two hour or less fire resistive wall assemblies

† Classified for two hour fire resistive ceiling assemblies

- Largest wirefill capacity in their class
- Won't crack or break in extreme environments
- Resist flexing
- Hold their shape
- Molded-in flanges and clamps
- Faster installation
- Lightweight
- Noncorrosive and nonconductive
- Nest inside one another
- UL Listed to UL 514C
- UL Classified for two hour or less fire wall assemblies
- Meets NEMA OS-2

### Old Work

Part No.	Description	Capacity	Std. Ctn. Qty.	Std. Ctn. Wt. (lbs.)
BH118R	Single Gang Old Work	18 cu. in.	36	10.9
BH234R	Two Gang Old Work	34 cu. in.	18	7.71



## 4-Inch Square Flexible Raceway Box with Adapters



Except where noted by ►

Part No.	Size	Cu. in.	Std. Ctn. Qty.	Std. Ctn. Wt. (lbs.)
• A5329DE	4" x 4" x 1 3/4" (1/2" & 3/4" KO's)	24.75	50	14.8

• Classified for two hour fire resistive wall assemblies



### Back Wall Support

Part No.	Std. Ctn. Qty.	Std. Ctn. Wt. (lbs.)
► A540DS	100	2.1

For use with 1/2" knockout



## Carlon® Wiresafe® Wireway and Fittings



### Wireway

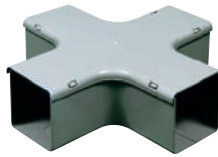
Part No.	Outside Nominal Dimensions	Length	Std. Ctn. Qty.	Std. Ctn. Wt. (lbs.)
17011	2 x 2	10'	1	4.7
17013	3 x 3	10'	1	11.2
17015	4 x 4	10'	1	11.2
17017	6 x 6	10'	1	21.4



### Fittings

#### Flat Cross (Clip-on Cover)

Part No.	Size	Std. Ctn. Qty.	Wt. (lbs.) ea.
* EGFCJ	2 x 2	1	0.5
* EGFCF	3 x 3	1	1.3
† EGFCN	4 x 4	1	1.7
† EGFCR	6 x 6	1	4.8



#### 90° Bend Internal Cover (Clip-on Cover)

Part No.	Size	Std. Ctn. Qty.	Wt. (lbs.) ea.
* EGLIJ	2 x 2	1	0.3
† EGLIL	3 x 3	1	0.7
† EGLIN	4 x 4	1	1.1
† EGLIR	6 x 6	1	3.0



\* Molded fitting—couplings not needed † Fabricated fitting—order couplings separately †† No coupling is required for 6" fabricated end cap

#### 90° Bend Flat Cover (Clip-on Cover)

Part No.	Size	Std. Ctn. Qty.	Wt. (lbs.) ea.
* EGLFJ	2 x 2	1	0.3
* EGLFL	3 x 3	1	0.6
† EGLFN	4 x 4	1	1.1
† EGLFR	6 x 6	1	3.3



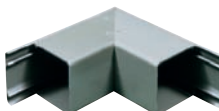
#### Tee Flat Cover (Clip-on Cover)

Part No.	Size	Std. Ctn. Qty.	Wt. (lbs.) ea.
* EGTFJ	2 x 2	1	0.4
* EGTFL	3 x 3	1	0.9
† EGTFN	4 x 4	1	1.4
† EGTFR	6 x 6	1	3.8



#### 90° Bend External Cover (Clip-on Cover)

Part No.	Size	Std. Ctn. Qty.	Wt. (lbs.) ea.
* EGLEJ	2 x 2	1	0.3
† EGLEL	3 x 3	1	0.8
† EGLEN	4 x 4	1	1.2
† EGLER	6 x 6	1	3.3



#### Tee External Cover (Clip-on Cover)

Part No.	Size	Std. Ctn. Qty.	Wt. (lbs.) ea.
† EGTEJ	2 x 2	1	0.4
† EGTEL	3 x 3	1	0.9
† EGTEN	4 x 4	1	1.4
† EGTER	6 x 6	1	3.8





## Fittings

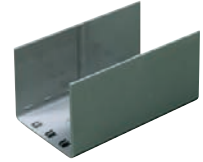
### Flange

Part No.	Size	Std. Ctn. Qty.	Wt. (lbs.) ea.
▶ EGJF	2 x 2	10	1.1
▶ EGFL	3 x 3	10	1.4
▶ EGFN	4 x 4	10	2.2
▶ EGFR	6 x 6	10	3.0



### Internal Coupling

Part No.	Size	Std. Ctn. Qty.	Wt. (lbs.) ea.
▶ EGCIJ	2 x 2	10	1.3
▶ EGCIL	3 x 3	10	2.2
▶ EGCIN	4 x 4	10	2.5
–	6 x 6	N/A	N/A



### End Cap (UL NEMA 12 Rated)

Part No.	Size	Std. Ctn. Qty.	Wt. (lbs.) ea.
* EGSEJ	2 x 2	10 Pair	0.6
* EGSEL	3 x 3	10 Pair	0.9
* EGSEN	4 x 4	10 Pair	1.6
†† EGSER	6 x 6	10 Pair	5.0



### Push Rivets

Part No.	Size	Std. Ctn. Qty.	Wt. (lbs.) ea.
▶ EGPR	N/A	200	0.4



### External Coupling

Part No.	Size	Std. Ctn. Qty.	Wt. (lbs.) ea.
EGCEJ	2 x 2	10	1.3
EGCEL	3 x 3	10	2.2
EGCEN	4 x 4	10	2.5
EGCER	6 x 6	10	7.8



### Hangers

Part No.	Size	Std. Ctn. Qty.	Wt. (lbs.) ea.
▶ EGSBJ	2 x 2	10	0.9
▶ EGSDL	3 x 3	10	1.3
▶ EGSDN	4 x 4	10	1.9
▶ EGSDR	6 x 6	10	2.8



\* Molded fitting–couplings not needed † Fabricated fitting–order couplings separately †† No coupling is required for 6" fabricated end cap



# CARLON® PV MOLD. PROTECT POWER COMMUNICATIONS CABLES ON POLES!



*Innovative Solutions for  
Wire and Cable Management*

- Carlon PV-Mold Nonmetallic Pole Riser System is designed to protect communications power cable installed on poles
- PV-Mold is designed in accordance with NEMA TC-19 specifications and RUS Listed
- PV-Mold is flame retardant, ultraviolet, cold temperature and corrosive atmosphere resistant...no grounding required.
- Carlon PV-Mold Polyethylene Vented Boots provide superior strength and aesthetics. Used for a "chimney" effect to cool cable and increase capacity.
- Carlon PV-Mold Polyethylene Adapters provide superior strength and aesthetics. Used to adapt duct to PV-Mold.

**Carlon®**  
LAMSON & SESSIONS

**1-800-322-7566**  
**www.carlon.com**

## ONE YEAR LIMITED WARRANTY

The following are the warranties made by Carlon. Carlon warrants this product to be free from defects in materials and workmanship for a period of one year from date of purchase. In the event of a product failure, Carlon's liability whether based on contract, tort, strict liability, warranty or any other claim, will be limited to the replacement of the product or refund of the purchase price which shall be in lieu of all other express or implied warranties, statutory or otherwise, including warranties of merchantability and fitness for use.

CARLON SHALL NOT BE LIABLE FOR LOST PROFITS, INDIRECT, SPECIAL, EXEMPLARY, INCIDENTAL OR CONSEQUENTIAL DAMAGES DUE TO THE IMPROPER WIRING OR MISUSE OF THE PRODUCT.

Visit our web site at [www.carlon.com](http://www.carlon.com)

**Carlon®**  
LAMSON & SESSIONS

In USA, contact:  
25701 Science Park Drive • Cleveland, Ohio 44122  
1-800-3-CARLON (1-800-322-7566)  
In Ohio, (216) 464-3400 • Fax: (216) 766-6444  
TDD/Hearing Impaired Access (216) 831-5918  
[www.carlon.com](http://www.carlon.com)

In Canada, contact:  
Lamson & Sessions Ltd.  
121 Watline Avenue  
Mississauga, ON • Canada L4Z 1P2  
(905) 755-1262 • (888) 269-9902  
Fax: (905) 755-1265 • (888) 269-8622