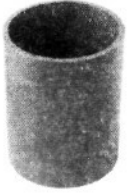


Couplings

(Use same type fittings for Type EB and DB)

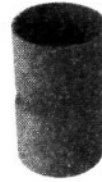
Sleeve Coupling (for repair work)



No internal stop

Part No.	Size	Std. Ctn. Qty.	Std. Ctn. Wt. (lbs.)	Broken Ctn. Price per Hu.	Full Ctn. Price per Hu.
E200J	2"	30	4.3	\$ 669.19	\$ 581.90
E200L	3"	25	13.6	\$ 924.57	\$ 803.97
E200M	3 1/2"	20	12	\$1112.34	\$ 967.25
E200N	4"	15	13.1	\$ 938.34	\$ 815.95
E200P	5"	8	12.2	\$1118.57	\$ 972.67
E200R	6"	5	11.1	\$1675.94	\$1457.34

5° Angle Coupling BxB



Part No.	Size	Std. Ctn. Qty.	Std. Ctn. Wt. (lbs.)	Broken Ctn. Price per Hu.	Full Ctn. Price per Hu.
E2440NF	4"	15	11.4	\$1575.07	\$1369.63
E2440PF	5"	10	12.4	\$1956.61	\$1701.40
E2440RF	6"	5	10.5	\$2376.38	\$2066.42

5° Angle Coupling BxB (Swedged)



Part No.	Size	Std. Ctn. Qty.	Std. Ctn. Wt. (lbs.)	Broken Ctn. Price per Hu.	Full Ctn. Price per Hu.
E245J	2"	20	21.5	\$913.96	\$794.75
E245N	4"	10	18.1	\$1220.13	\$1060.98
E245P	5"	10	27	\$1379.28	\$1199.37
E245R	6"	5	10.5	\$1977.97	\$1719.97

Coupling



Part No.	Size	Std. Ctn. Qty.	Std. Ctn. Wt. (lbs.)	Broken Ctn. Price per Hu.	Full Ctn. Price per Hu.
E240L	3"	30	9.2	\$279.51	\$243.05
E240N	4"	15	8	\$445.60	\$387.48
E240P	5"	20	16.4	\$804.82	\$699.84
E240RF	6"	5	12.7	\$2331.54	\$2027.43

Plugs

Price Schedule Code 7

Plug



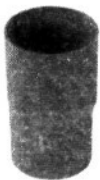
Part No.	Size	Std. Ctn. Qty.	Std. Ctn. Wt. (lbs.)	Broken Ctn. Price per Hu.	Full Ctn. Price per Hu.
P258H	1 1/2"	50	1.7	\$117.37	\$102.06

Long Line Coupling



Part No.	Size	Std. Ctn. Qty.	Std. Ctn. Wt. (lbs.)	Broken Ctn. Price per Hu.	Full Ctn. Price per Hu.
E241L	3"	15	6.5	\$559.29	\$486.34
E241N	4"	10	7.5	\$703.28	\$611.55

5° Angle Coupling BxS



Part No.	Size	Std. Ctn. Qty.	Std. Ctn. Wt. (lbs.)	Broken Ctn. Price per Hu.	Full Ctn. Price per Hu.
E244J	2"	15	5.9	\$933.66	\$811.88
E244L	3"	5	3.6	\$1203.05	\$1046.13
E244NF	4"	15	11.4	\$1423.14	\$1237.51
E244NF5 (short)	4"	25	19	\$1336.83	\$1162.46
E244PF	5"	10	16.6	\$1556.97	\$1353.89
E244PF5 (short)	5"	20	31.1	\$1382.98	\$1202.59
E244RF	6"	5	17.5	\$1594.15	\$1386.22
E244RF5 (short)	6"	10	15.6	\$2144.68	\$1864.94

Plug with Pull Tab

Price Schedule Code 7



Part No.	Size	Std. Ctn. Qty.	Std. Ctn. Wt. (lbs.)	Broken Ctn. Price per Hu.	Full Ctn. Price per Hu.
P258JT	2"	60	3.3	\$190.98	\$166.07
P258LT	3"	30	2.9	\$281.92	\$245.15
P258NT	4"	48	8.2	\$318.23	\$276.72
P258PT	5"	30	6	\$430.46	\$374.31
P258RT	6"	30	9	\$538.06	\$467.88

Shaded areas indicate non-stock factory make-to-order items only – Material is non-returnable and non-cancellable.

P&C® Duct

Carlton® PVC P&C® Duct and fittings are designed and formulated specifically for concrete encased and direct burial applications of power utility primaries, secondaries, street lighting and distribution systems. Carlton P&C® Duct complies with NEMA Standard TC-6 & 8, and ASTM F-512 for utility duct. Both EB and DB duct are rated for use with 90°C conductors.

Carlton® Telephone Duct complies with NEMA TC-10. Bellcore CAO 8546, GT8343, and other applicable telephone standards.

Advantages:

- Manufactured for high modulus C-250 compound
- High impact strength
- Excellent structural strength
- Superior load bearing
- Multiple duct banks can be pre-assembled and lowered into trench
- No special cutting or tapering devices required
- Provides easy bending around obstructions minimizing the need for special angle couplings and sweeps
- Superior aging and weathering characteristics

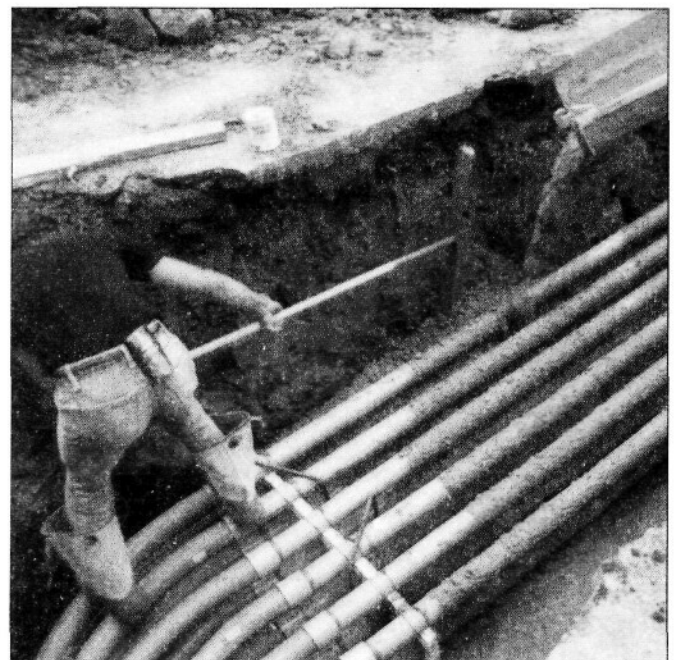
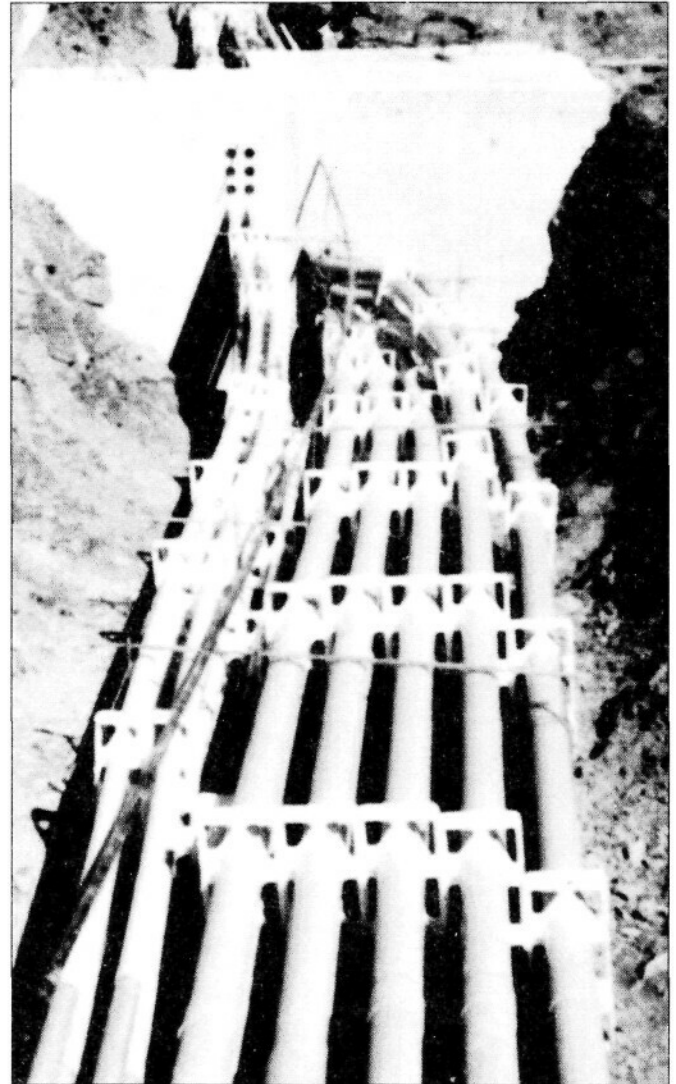
Features:

- Heat resistant
- Fire resistant
- Conforms to NEMA Standard TC-6 & 8 and ASTM Standard F-512 for utility duct*
- Carlton P&C® Duct Type EB-20 is ETL Listed
- Low coefficient of expansion
- Continuous rigid control
- Smooth inner wall and smooth transition between joints

Engineering Features:

Chemical Inertness resists water absorption and is totally immune to galvanic or electrolytic attacks.

Solvent Cemented Joints provide leakproof duct runs tested at 25 psi. This type of joint eliminates the need for costly mechanical rodding procedure. Carlton P&C® Duct can be rodded pneumatically.



*P&C Duct only

Made in the U.S.A.
800-3-CARLON (322-7566)