

Super-high output LED high bay.
Affordable replacement for up to 400W HID.

RAIL™



RAB®
LIGHTING
RABWEB.COM • 888 722-1000

High Bay RAIL

- Affordable LED replacement with up to 400W HID equivalency
- Ideal for large spaces at mounting heights up to 40 ft.
- Four power packages deliver 12,000 to 27,000 lumens
- Optional motion sensor for multi-level lighting control
- Ultra-high efficiency up to 128 lm/W
- 60% less energy usage and no relamping for 27 years
- Optional 0-10V driver for variable dimming control



*High Bay RAILs are
DLC listed, except
480V models.*



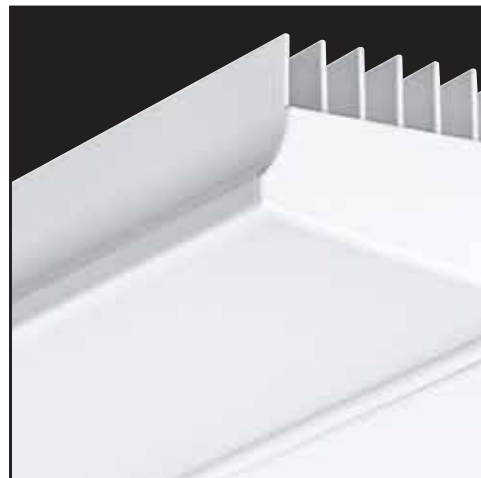
Available in two sizes (20" and 30") and four power packages: 95W, 150W, 185W and 225W



Optional photo/motion sensor with high/low modes, time-delay dimming and timed cutoff



Two mounting options: "V" hooks for chains, or backbox for pendant and surface mount.

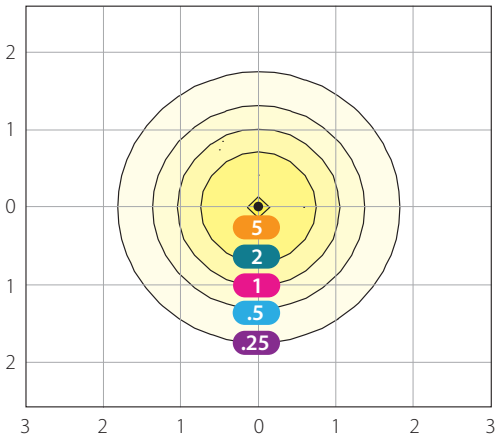


High-transmittance lens for maximum light output; semi-diffuse polystyrene eliminates glare

Photometrics

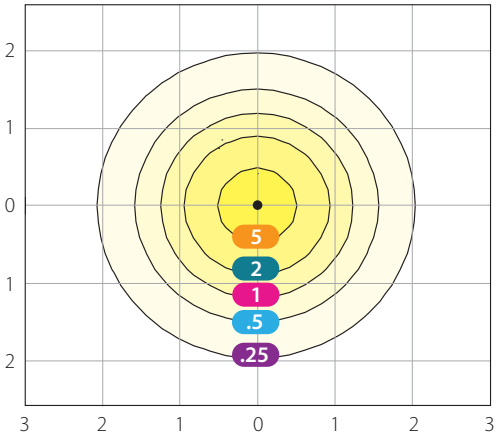
RAIL 95W

30' Mounting Ht.
5000K
Photometric Report
#RAB00845



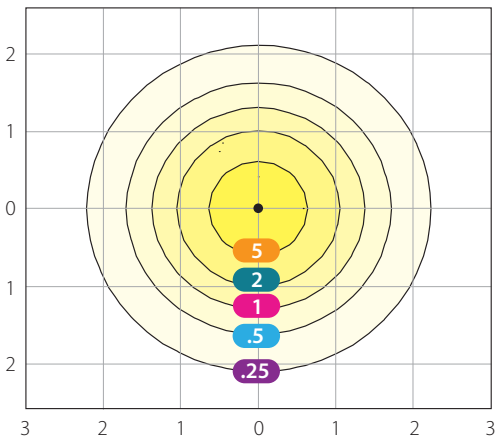
RAIL 150W

30' Mounting Ht.
5000K
Photometric Report
#RAB00851



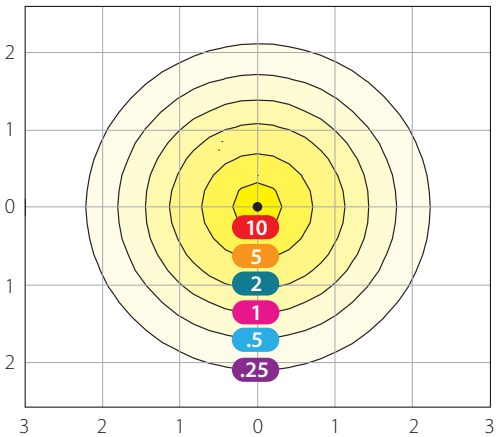
RAIL 185W

30' Mounting Ht.
5000K
Photometric Report
#RAB00833



RAIL 225W

30' Mounting Ht.
5000K
Photometric Report
#RAB00839



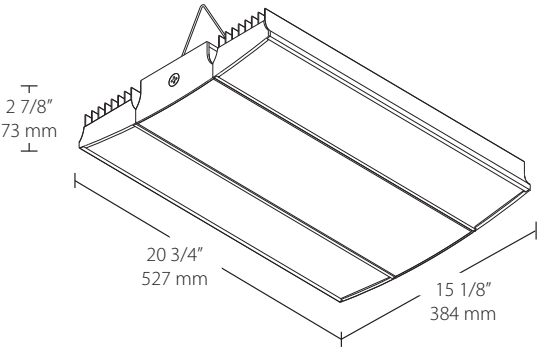
Grid scales: Multiples of mounting height
Values shown in footcandles

Mounting Height	20	25	30	35	40
Multiplier	2.3	1.4	1.0	0.7	0.6

Dimensions & weights

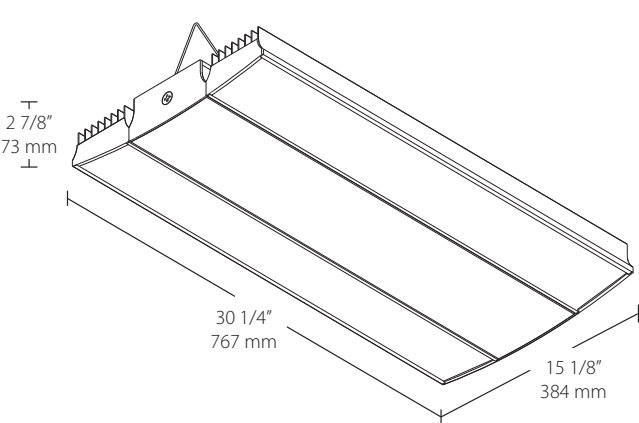
RAIL 95W & 150W

Weight: 18 lbs.



RAIL 185W & 225W

Weight: 23 lbs.



RAIL™ Specifications

UL Listing: Suitable for damp locations

Impact Resistance: Suitable for use in gymnasiums and other similar environments

LEDs: Long-life, high-efficiency surface mount LEDs

Lifespan: 100,000-hour LED lifespan based on IES LM-80 results and TM-21 calculations

Drivers:

95W: Constant current, Class 2, 100 - 277V and 480V, 50/60 Hz, 120V: 0.78A, 208V: 0.47A, 240V: 0.41A, 277V: 0.35A, 480V: 0.21A

150W: Constant current, Class 2, 100 - 277V and 480V, 50/60 Hz, 120V: 1.30A, 208V: 0.75A, 240V: 0.65A, 277V: 0.56A, 480V: 0.34A

185W: Constant current, Class 2, 100 - 277V and 480V, 50/60 Hz, 120V: 1.60A, 208V: 0.92A, 240V: 0.80A, 277V: 0.69A, 480V: 0.41A

225W: Constant current, Class 2, 100 - 277V and 480V, 50/60 Hz, 120V: 1.92A, 208V: 1.12A, 240V: 0.97A, 277V: 0.84A, 480V: 0.51A

RAIL 95W - 20"

Color Temperature	5000K	4000K	3500K
Input Watts	93	92	93
Output Lumens	11,657	10,017	10,238
Lumens Per Watt	126	109	111
Color Accuracy (CRI)	74	84	82

RAIL 150W - 20"

Color Temperature	5000K	4000K	3500K
Input Watts	150	148	149
Output Lumens	17,964	15,582	15,907
Lumens Per Watt	120	106	107
Color Accuracy (CRI)	75	84	82

RAIL 185W - 30"

Color Temperature	5000K	4000K	3500K
Input Watts	183	181	184
Output Lumens	23,503	20,232	20,647
Lumens Per Watt	128	112	113
Color Accuracy (CRI)	75	85	82

RAIL 225W - 30"

Color Temperature	5000K	4000K	3500K
Input Watts	223	223	225
Output Lumens	27,279	23,560	24,131
Lumens Per Watt	122	106	107
Color Accuracy (CRI)	74	84	82

Dimming: Available with on/off driver or 0-10V dimming

Ambient Temperature: Suitable for use 12 hours a day, 5 days a week in 50° C. Suitable for 24/7 use in ambient temperatures up to 30° C. For questions related to fixture operation in high ambient temperatures, contact RAB tech support 888-722-1000.

Thermal Management: Superior thermal management with external Air-Flow fins

Housing: Extruded aluminum

Mounting: V hooks (*chain by others*), or backbox for pendant/surface mount (*pendant by others*)

Lens: High-transmittance polystyrene

Reflector: Specular, high-reflectance aluminum with 95% reflectivity

Color Stability: LED color temperature is warranted to shift no more than 200K in CCT over a 5 year period.

Color Uniformity: RAB's range of CCT (Correlated Color Temperature) follows the guidelines of the American National Standard for Specifications for the Chromaticity of Solid State Lighting (SSL) Products, ANSI C78.377-2011.

Finish: Our environmentally friendly polyester powder coatings are formulated for high-durability and long-lasting color, and contain no VOC or toxic heavy metals.

Green Technology: Mercury and UV free, and RoHS compliant. Polyester powder coat finish formulated without the use of VOC or toxic heavy metals.

IESNA LM-79 & LM-80 Testing: RAB LED luminaires have been tested by an independent laboratory in accordance with IESNA LM-79 and LM-80, and have received the Department of Energy "Lighting Facts" label.

California Title 24: RAIL models with multi-level motion sensor (/WS2 or /WS4) comply with 2013 California Title 24 building and electrical codes as commercial indoor fixtures for corridors, stairwells, warehouses and covered parking garages.

Ordering information

Product Family	Wattage	Color Temp.	Finish	Driver Options	Sensor Options
<div>RAIL</div> <div>RAILP</div>	<div>95</div> <div>150</div> <div>185</div> <div>225</div>	<div>Blank</div> <div>N</div> <div>YN</div>	<div>W</div> <div>White</div>	<div>Blank</div> <div>/480</div> <div>/D10</div> <div>/480/D10</div>	<div>/WS2</div> <div>/WS4</div>
V Hook Mount Pendant/Surface Mount	95W (20") 150W (20") 185W (30") 225W (30")	5000K 4000K 3500K		120-277V On/Off 480V On/Off 120-277V with 0-10V Dimming 480V with 0-10V Dimming	Multi-Level Motion Sensor (20 ft) * Multi-Level Motion Sensor (40 ft) *

* WS2 with 20' lens only available for 95 and 150W models; WS4 with 40' lens only available for 185 and 225W models. Both sensors only available with /D10 dimming drivers, but not with 480V driver.

Multi-level sensor specifications

Power consumption: 1W

0-10V sinking current: 50mA

Adjustable high and low modes: High: 0-10V; Low: off, 0-9.8V

Adjustable time delay: Amount of time in high mode with no motion before switching to low mode: 5 min., 1 - 30 min.

Adjustable cutoff delay: Time in which the fixture will remain on low mode with no motion before turning off and waiting for new motion to turn on: None, 1 - 60 min., 1 - 5 hrs.

Adjustable sensitivity: None, low, medium, maximum

Adjustable setpoint: None, 1 to 250 fc, auto

Adjustable ramp up and fade down times: 1 - 60 sec.

Operating temperature: -40°F to 167°F (-40°C to +75°C)

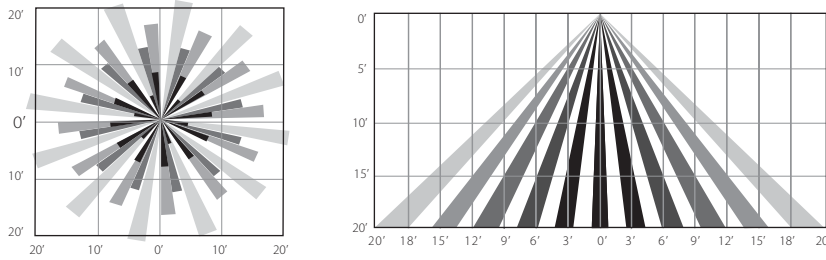
Operating humidity: 5% to 95% noncondensing

Relay life rating: 200,000 cycles (120/277VAC), 50,000 cycles (230VAC)

Photo/motion sensor detection coverage

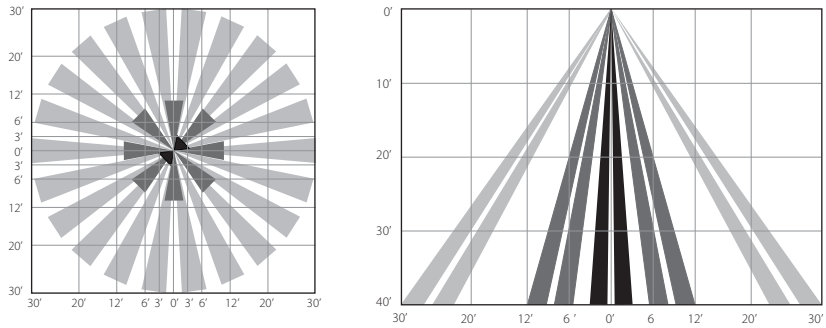
WS2 (20 ft. Mounting Height)

40 ft. diameter coverage



WS4 (40 ft. Mounting Height)

60 ft. diameter coverage



Accessories



Adjust settings using a handheld wireless configuration tool (catalog #WSREM)

- High/low modes fully adjustable from 0 to 10V
- Time delay dims light 30 seconds to 30 minutes after detecting motion
- Optional cutoff delay turns fixture off after a preset period of vacancy
- Configure control settings to react to ambient light levels
- Ramp up and fade down times can be customized



High efficiency. High output.
High Bay RAIL.

RAB[®]
LIGHTING
RABWEB.COM • 888 722-1000