

Blank Patch Panel Solutions

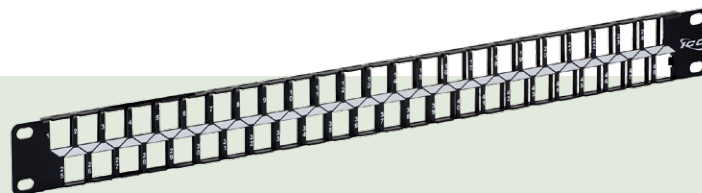
Configurable High Density Blank Patch Panel

- Panel is configurable with HD style modular connectors

PART NUMBER:

IC107BP481 48-Ports blank, 1 RMS

1 RMS (Rack Mount Space) = 1.75"



Configurable CAT 6A UTP Blank Patch Panel

- Panel is configurable with CAT 6A UTP modular connectors

PART NUMBER:

IC107PPU6A 24-Ports blank, 1 RMS

1 RMS (Rack Mount Space) = 1.75"



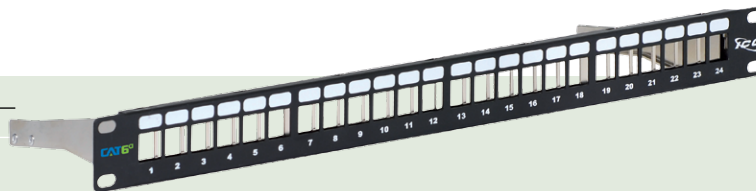
Configurable CAT 6A FTP Blank Patch Panel

- Panel is configurable with CAT 6A FTP modular connectors

PART NUMBER:

IC107PPS6A 24-Ports blank, 1 RMS

1 RMS (Rack Mount Space) = 1.75"



Configurable High Density Blank Patch Panel

- Panel is configurable with HD style modular connectors

PART NUMBER:

IC107BP241 24-Ports blank, 1 RMS

IC107BP482 48-Ports blank, 2 RMS

1 RMS (Rack Mount Space) = 1.75"



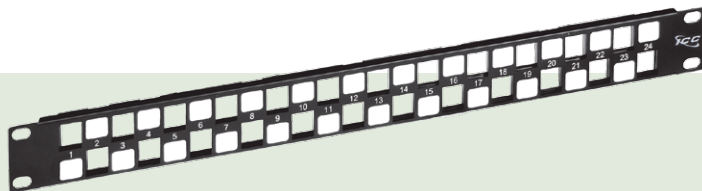
Configurable Blank Patch Panel

- Panel is configurable with EZ style modular connectors

PART NUMBER:

IC107BE241 24-Ports blank, 1 RMS

1 RMS (Rack Mount Space) = 1.75"



Multimedia Flush Mount | Vertical Blank Patch Panels

- Customize with ICC modular connectors
- Wall mountable and measures (10" H x 3.30" W x 2.80" D)
- Includes removable 89D mounting bracket

PART NUMBER:

IC107BP12V 12-Port, Configurable (HD Only)

IC107BP8VB 8-Port, Configurable, Flush Mount Style (EZ)



IC107BP12V



IC107BP8VB

Every effort has been made to ensure the integrity of this catalog. Badger Communications cannot be held responsible for any misrepresentation associated with any products due to omissions, typographic errors or misprints.



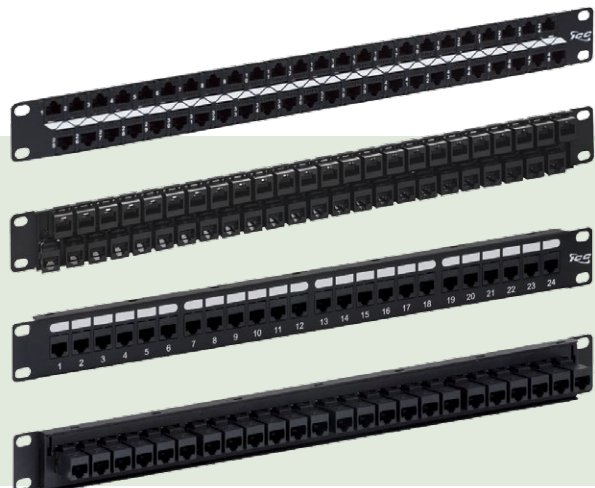
PATCH PANELS & CROSS-CONNECT

Feed-Through Patch Panels

- CAT 6 or CAT 5e modular couplers pre-installed
- 19" EIA rack mount width

PART NUMBER:

ICMPP48C61	48-Ports, CAT 6, 8P8C, 1 RMS
ICMPP48C51	48-Ports, CAT 5e, 8P8C, 1 RMS
ICMPP24CP6	24-Ports, CAT 6, 8P8C, 1 RMS
ICMPP48CP6	48-Ports, CAT 6, 8P8C, 2 RMS
ICMPP24CP5	24-Ports, CAT 5e, 8P8C, 1 RMS
ICMPP48CP5	48-Ports, CAT 5e, 8P8C, 2 RMS



Voice Grade CAT 3 | Telco Patch Panels

- Use 25-Pair Telco cable for quick installation
- 19" EIA rack mount width

PART NUMBER:

ICMPP24T2C	24-Port, RJ-45, 8P2C, 1 RMS, 1 Male Telco Connector
ICMPP48T2C	48-Port, RJ-45, 8P2C, 2 RMS, 2 Male Telco Connectors
ICMPP24TF2	24-Port, RJ-45, 8P2C, 1 RMS, 1 Female Telco Connector
ICMPP48TF2	48-Port, RJ-45, 8P2C, 2 RMS, 2 Female Telco Connectors
ICMPP24T4C	24-Port, RJ-45, 8P4C, 1 RMS, 1 Male Telco Connector
ICMPP48T4C	48-Port, RJ-45, 8P4C, 2 RMS, 2 Male Telco Connectors
ICMPP24TF4	24-Port, RJ-45, 8P4C, 1 RMS, 1 Female Telco Connector
ICMPP48TF4	48-Port, RJ-45, 8P4C, 2 RMS, 2 Female Telco Connectors
ICMPP024T2	24-Port, RJ-11, 6P2C, 1 RMS, 1 Male Telco Connector
ICMPP048T2	48-Port, RJ-11, 6P2C, 2 RMS, 2 Male Telco Connectors
ICMPPTF242	24-Port, RJ-11, 6P2C, 1 RMS, 1 Female Telco Connector
ICMPPTF482	48-Port, RJ-11, 6P2C, 2 RMS, 2 Female Telco Connectors
ICMPP024T4	24-Port, RJ-11, 6P4C, 1 RMS, 2 Male Telco Connectors
ICMPP048T4	48-Port, RJ-11, 6P4C, 2 RMS, 4 Male Telco Connectors
ICMPPTF244	24-Port, RJ-11, 6P4C, 1 RMS, 2 Female Telco Connectors
ICMPPTF484	48-Port, RJ-11, 6P4C, 2 RMS, 4 Female Telco Connectors

1 RMS (Rack Mount Space) = 1.75"



ICMPP48T2C

Blank Panels

- Fills empty spaces between mounted equipment

PART NUMBER:

ICCMSCMPB1	1.75"H x 19"W, 1 RMS
ICCMSCMPB2	3.50"H x 19"W, 2 RMS
ICCMSCMPB3	5.25"H x 19"W, 3 RMS
ICCMSCMPB4	7.00"H x 19"W, 4 RMS
ICCMSCMPC1	Blank panel, 1.75" H x 19" W, 1 RMS, 12 pcs.
ICCMSCMPC2	Blank panel, 1.75" H x 19" W, 2 RMS, 12 pcs.
ICCMSCMPC3	Blank panel, 1.75" H x 19" W, 3 RMS, 6 pcs.
ICCMSCMPC4	Blank panel, 1.75" H x 19" W, 4 RMS, 6 pcs.

1 RMS (Rack Mount Space) = 1.75"



ICCMSCMPB2

Cable Management Bar

- Mountable on the back of 110-Type patch panel for rear cable support
- ABS plastic for durability

PART NUMBER:

ICMPP25CMB	Rear Cable Management Bar
-------------------	---------------------------



ICMPP25CMB