

Type 4 3-Piece Couplings

Threaded For Rigid Conduit and IMC.

Applications

- Couples conduit when neither can be turned.

Features

- Threaded (NPS) for rigid conduit and IMC
- Concretetight

Standard Materials

- Malleable iron

Standard Finishes

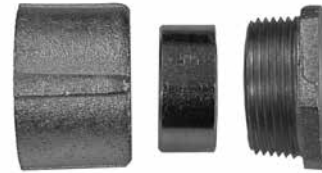
- Zinc electroplated

Options

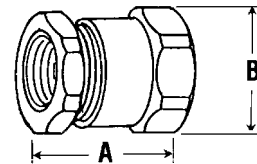
- For additional corrosion protection, specify Mechanically Galvanized. Contact your local representative for pricing and availability.

NEC/CEC Certifications and Compliances

- UL Standard: 514B
- UL Listed: E-14814
- CSA Standard: C22.2 No. 18
- CSA Certified: 009795
- Fed. Spec./CID: A-A-50553
- ANSI/NEMA: FB-1



Type 4



Trade Size (Inches)	Dimensions in Millimeters (Inches)			Catalog Number
	Overall Length	Max. Dia.		
1/2	35.05 (1.38)	36.58 (1.44)		4-50
3/4	41.4 (1.63)	44.45 (1.75)		4-75
1	45.97 (1.81)	49.28 (1.94)		4-100
1-1/4	55.63 (2.19)	60.45 (2.38)		4-125
1-1/2	58.67 (2.31)	66.8 (2.63)		4-150
2	61.98 (2.44)	85.85 (3.38)		4-200
2-1/2	81.03 (3.19)	101.6 (4)		4-250
3	84.07 (3.31)	106.43 (4.19)		4-300
3-1/2	88.9 (3.5)	130.3 (5.13)		4-350
4	95.25 (3.75)	139.7 (5.5)		4-400
5	93.73 (3.69)	174.75 (6.88)		4-500
6	109.47 (4.31)	209.55 (8.25)		4-600

Type ON Offset Nipple

Threaded For Rigid Conduit and IMC.

Applications

- Provides box-to-box connection of knockouts. Allows misaligned knockout connection by “rolling” the offset nipple until aligned with each knockout.

Features

- Hub-to-hub offset is 3/4”.
- See “A” in table for distance between boxes.

Standard Materials

- Malleable iron

Standard Finishes

- Zinc electroplated

Options

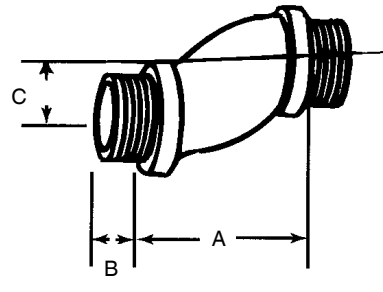
- For additional corrosion protection, specify Mechanically Galvanized. Contact your local representative for pricing and availability.

NEC/CEC Certifications and Compliances

- UL Standard: 514B
- UL Listed: E-14814
- CSA Standard: C22.2 No. 18.3
- CSA Certified: 065178
- NEMA: FB-1



Type ON



Trade Size (Inches)	Dimensions in Millimeters (Inches)			Weight per 100 kg (lb)	Catalog Number
	A	B	C		
1/2	41.4 (1.63)	11.2 (0.44)	19.1 (0.75)	10.43 (23.00)	ON-50
3/4	41.4 (1.63)	11.2 (0.44)	19.1 (0.75)	14.06 (31.00)	ON-75
1	41.4 (1.63)	12.7 (0.50)	19.1 (0.75)	19.96 (44.00)	ON-100
1-1/4	41.4 (1.63)	14.2 (0.56)	19.1 (0.75)	27.22 (60.00)	ON-125
1-1/2	41.4 (1.63)	16.0 (0.63)	19.1 (0.75)	37.19 (82.00)	ON-150
2	41.4 (1.63)	19.1 (0.75)	19.1 (0.75)	50.80 (112.00)	ON-200

Type 300R Hex Reducing Bushings and Type 7 Bushed Conduit Nipples

Threaded For Rigid Conduit and IMC.

Applications

- To reduce a threaded conduit entry into a smaller trade size.

Standard Materials

- Malleable iron

Standard Finishes

- Zinc electroplated

NEC/CEC Certifications and Compliances

- UL Standard: 514B
- UL Listed: E-14814
- CSA Standard: C22.2 No. 18
- CSA Certified: 009795
- Fed. Spec: W-F-408E
- NEMA: FB-1

Applications

- Use with bushings to bond 1/2" through 6" rigid conduit and IMC to boxes, cabinets or other enclosures.

Features

- Available with Insulated Throat.
- With rigid conduit threads (NPS).

Standard Materials

- Malleable iron

Standard Finishes

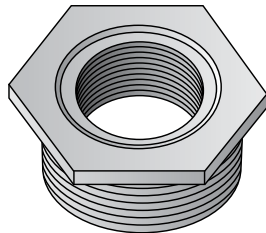
- Zinc electroplated

Options

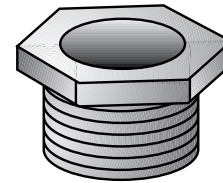
- For additional corrosion protection, specify Mechanically Galvanized. Contact your local representative for pricing and availability.

NEC/CEC Certifications and Compliances

- UL Standard: 514B
- UL Listed: E-14814
- CSA Standard: C22.2 No. 18.3
- CSA Certified: 065178
- ANS/NEMA: FB-1



Type 300R



Type 7

Type 300R Hex Reducing Bushings and Type 7 Bushed Conduit Nipples

Threaded For Rigid Conduit and IMC.

NEC/CEC RIGID AND IMC CONDUIT FITTINGS

Fittings

Dimensions in Millimeters (Inches)				
Trade Size (Inches)	Max. Dim. Across Corners	Thread Length	Flange Thickness	Catalog Number
Type 300R				
1/2 - 3/8	28.7 (1.13)	12.7 (0.5)	4.06 (0.16)	320-R
3/4 - 1/2	36.58 (1.44)	16 (0.63)	4.83 (0.19)	321-R
1 - 3/4	41.4 (1.63)	16 (0.63)	4.83 (0.19)	322-R
1 - 1/2	41.4 (1.63)	17.53 (0.69)	4.06 (0.16)	323-R
1-1/4 - 1/2	49.28 (1.94)	19.05 (0.75)	4.83 (0.19)	324-R
1-1/4 - 3/4	49.28 (1.94)	19.05 (0.75)	4.83 (0.19)	325-R
1-1/4 - 1	49.28 (1.94)	19.05 (0.75)	4.83 (0.19)	326-R
1-1/2 - 1-1/4	60.45 (2.38)	23.88 (0.94)	7.87 (0.31)	327-R
1-1/2 - 1	60.45 (2.38)	23.88 (0.94)	7.87 (0.31)	328-R
1-1/2 - 3/4	60.45 (2.38)	23.88 (0.94)	7.87 (0.31)	329-R
1-1/2 - 1/2	60.45 (2.38)	23.88 (0.94)	7.87 (0.31)	330-R
2 - 1-1/2	69.85 (2.75)	23.88 (0.94)	7.87 (0.31)	331-R
2 - 1-1/4	69.85 (2.75)	23.88 (0.94)	7.87 (0.31)	332-R
2 - 1	69.85 (2.75)	23.88 (0.94)	7.87 (0.31)	333-R
2 - 3/4	69.85 (2.75)	23.88 (0.94)	7.87 (0.31)	334-R
2 - 1/2	69.85 (2.75)	23.88 (0.94)	7.87 (0.31)	335-R
2-1/2 - 2	82.55 (3.25)	23.88 (0.94)	11.18 (0.44)	336-R
2-1/2 - 1-1/2	82.55 (3.25)	23.88 (0.94)	11.18 (0.44)	337-R
2-1/2 - 1	82.55 (3.25)	23.88 (0.94)	11.18 (0.44)	339-R
3 - 1-1/2	100.08 (3.94)	26.92 (1.06)	12.7 (0.5)	340-R
3 - 2	96.77 (3.81)	28.7 (1.13)	12.7 (0.5)	341-R
3 - 2-1/2	100.08 (3.94)	26.92 (1.06)	12.7 (0.5)	342-R
3-1/2 - 3	112.78 (4.44)	38.1 (1.5)	12.7 (0.5)	349-R
3-1/2 - 2-1/2	112.78 (4.44)	38.1 (1.5)	12.7 (0.5)	350-R
4 - 2-1/2	130.3 (5.13)	36.58 (1.44)	12.7 (0.5)	355-R
4 - 3	136.65 (5.38)	31.75 (1.25)	12.7 (0.5)	356-R
4 - 3-1/2	136.65 (5.38)	31.75 (1.25)	12.7 (0.5)	357-R

Dimensions in Millimeters (Inches)					
Trade Size (Inches)	Max. Dia. Across Corners	Thread Length	Flange Thickness	Catalog Number	Insulated Throat Catalog Number
Type 7					
3/8	22.35 (0.88)	12.7 (0.5)	3.3 (0.13)	7-38	—
1/2	28.7 (1.13)	12.7 (0.5)	4.83 (0.19)	7-50	7-50T ①
3/4	31.75 (1.25)	16 (0.63)	4.83 (0.19)	7-75	7-75T
1	44.45 (1.75)	16 (0.63)	6.35 (0.25)	7-100	7-100T
1-1/4	54.1 (2.13)	22.35 (0.88)	6.35 (0.25)	7-125	7-125T
1-1/2	63.5 (2.5)	25.4 (1)	7.87 (0.31)	7-150	7-150T
2	76.2 (3)	28.7 (1.13)	7.87 (0.31)	7-200	7-200T
2-1/2	92.2 (3.63)	31.75 (1.25)	9.65 (0.38)	7-250	7-250T
3	114.3 (4.5)	31.75 (1.25)	9.65 (0.38)	7-300	7-300T
3-1/2	130.3 (5.13)	35.05 (1.38)	9.65 (0.38)	7-350	7-350T
4	133.35 (5.25)	31.75 (1.25)	11.18 (0.44)	7-400	7-400T
5	162.05 (6.38)	31.75 (1.25)	12.7 (0.5)	7-500	7-500T
6	193.8 (7.63)	41.4 (1.63)	12.7 (0.5)	7-600	7-600T

① Not UL Listed.