

NEBO®



NEBO®
Innovative Lighting

2018

6 million plus flashlights sold per year. With over 30,000 retail customers, we get instant market feedback on up-take and trends giving us unparalleled insight leading to the competitive edge in development.

Innovation and retail price value. We bring cutting edge design with high lumen output to our line. Our established retailers create a value proposition without jeopardising quality or product integrity.

International Patented technology. This secures our place in the market and brings protection to our customers and products from counterfeit threats.

Proven business model. Solid dependable capacity working with some of the largest factories in the Far East delivering the highest quality.

Top 5 Customers. Wal-Mart (30 yrs), Dicks Sporting Goods (4 yrs), Academy Sports (3 yrs), Bass Pro Shops (6 yrs), Sears Holding Corp. (25 yrs)

Now available outside the USA. NEBO® is a division of Alliance Sports Group (ASG), with headquarters in Grand Prairie, TX, USA. True Brands Ltd is a UK based wholly owned subsidiary of ASG, handling the global distribution and selling of NEBO® products throughout the World.

As technology progresses, consumers are coming to expect better value for their money. There is a focus on reducing energy consumption and a heavier focus on "green" living overall. High Powered LED's, lens technology and rechargeable flashlights are all utilities that we have incorporated into our assortment, and we are always learning and discovering other innovative ways to better our value at consumer level.

NEBO® flashlights deliver optimum performance. Products are of the highest quality, innovatively designed, with special features and patented technology. Eye-catching packaging, clever point of sale and interactive TRY ME features set them apart from many of the more expensive, less innovative major brands and the many sub-standard low cost brands. In this way, we have carved out market positioning that has enabled the brand to continually increase market share and grow into one of the largest flashlight brands in the world.

PATENTS



C•O•B (Chips on Board)
A new innovation in LED technology. C•O•B features smaller, easier clustered LED chips that are mounted directly to the circuit board. These LED chips work together as one lighting module. Because of the compact design, C•O•B outperforms traditional lighting by up to 50 times the light output per centimetre of light surface.



OPTIMISED CLARITY
Eliminating inconsistencies in light, the OC™ - Optimised Clarity Technology provides intense, clear, pristine light that is easy on the eyes. This technology allows the light beam to be as bright on the edge as it is in the center when used in flood mode.



ARCUS™
Shaping light like never before. Arcus is a new proprietary C•O•B LED technology that allows the shaping of light into full 3D patterns, giving optimal, bright, uniform light exactly where it's needed.



FLEX-POWER™
FLEX-POWER™ technology allows the flexibility to use different quantities of batteries to power the light.

SOME OF OUR RETAILERS



NEBO® is one of the world's best-selling lines of innovative, consumer-friendly flashlights and tools. Ever-changing and never compromising, we create and see our products through every phase of development. From the conceptual drawings on the sketch pad all the way to the end consumer, we offer quality and customer service guarantees that are unmatched.

COUNTER TOP DISPLAYS

We are excited to introduce to you our latest line-up of new and innovative lighting products with counter top displays.

All of these high quality practical LED lighting products come complete with their own cleverly created point of sale displays, intended to sit directly on the countertop, near the till point - taking up as little space as possible and offering a unique and impulsive 'TRY & BUY' shopping experience.

The displays are designed to help you to sell as much stock as possible by encouraging your customers to interact, discover, and be impressed by the quality and brightness of these innovative and exciting NEBO® lighting products.

 NEW 6 BLAST	 NEW 8 BIG Larry PRO	 NEW 10 the Larry TILT <small>The Directional Pocket Work Light!</small>	 NEW 12 POPLITE	 NEW 13 POPPY
 14 SLYDE KING	 16 CRYKET	 NEW 18 ARC250 <small>PRO BIKE LIGHT</small>	 NEW 20 SLYDE+	 22 DUO 250+ LUMEN HEADLAMP
 24 TWYST Z	 26 CaseBrite <small>PHONE CASE + POWERFUL LIGHT</small>	 NEW 27 REDLINE V	 28 LiL Larry <small>POWER POCKET LIGHT</small>	 29 BIG Larry <small>POWER WORK LIGHT</small>
 30 the Larry	 31 REDLINE RB <small>with MAGDOCK</small>	 32 REDLINE	 33 REDLINE	 34 TRANSPORT
				 35 LUMO

BRIGHT IDEAS

Bright Ideas 'language free' euro-hook packaging is presented in a fresh and eye catching striking green and white colourway standing out from the competition. The packs clearly show the product features through the use of internationally recognisable icons, enabling them to be sold Worldwide.

All Bright Ideas product packs include a "TRY ME" feature to encourage your customers to interact, discover, and be impressed by the quality and brightness of these innovative and exciting NEBO® lighting products.

The Bright Ideas products are well suited for retailers that sell from display hooks and Ideal for selling throughout the Outdoor, Camping, Travel, Auto, Garden, Home and Gift sectors.

 NEW SLYDE KING 36	 NEW SLYDE+ 37	 CRYKET 38
 TWYST Z 39	 DUO 250+ LUMEN HEADLAMP 40	 REDLINE alpha ZOOM 41
 the BIG Larry 42	 LiL Larry 43	 the Larry 44
 REDLINE RB with MAGDOCK 45	 LUMO 46	 THE RECHARGEABLE WORKBRITE 2 47

iPROTEC™ MADE TOUGH

iPROTEC flashlights are practical, enjoyable to own, and far exceed expectations relative to their price. They are "MADE TOUGH", ensuring each of our flashlights are rugged and highly dependable whilst also being compact and easy to pack away. iPROTEC flashlights have lumen outputs that are equal to those of much more expensive products.

PRO1400LIGHT - NEW.....	48
PRO400LIGHT - NEW.....	49
PRO200LIGHT - NEW.....	49
TWYST®.....	50
TWYST®Z.....	51
NIGHTCOMMANDER.....	52
PRODUOHEADLAMP.....	53
PRO250LIGHT.....	54
PRO320RC.....	55
PRODUALLIGHT.....	56
PRO800LIGHT.....	57
TASKLIGHT.....	58
CHAMELEON.....	59
PROLUMOLIGHT.....	59
PRO280LIGHT.....	60
PRO180LIGHT.....	60
PRO220LIGHT.....	61
PRO100LIGHT.....	61



NEBO® REDLINE® BLAST

The brightest flashlight ever created by NEBO is here – the REDLINE BLAST. With **1,400 lumens** of high intensity light, this must-have flashlight can throw a spectacularly bright beam over 260 metres. The BLAST is **completely waterproof** and ready for any weather condition. Want more? How about a 4x zoom and 5 light modes (high, medium, low, defensive strobe & flashing beacon).

5 LIGHT MODES

- High (1400 lumens) - 2.5 hours / 260 metres
- Medium (560 lumens) - 7 hours / 180 metres
- Low (140 lumens) - 30 hours / 90 metres
- Strobe (1400 lumens) - 6 hours
- Beacon (200 lumens) - 120 hours

DESIGN

- Convex lens
- Tactical edge
- 4x adjustable zoom
- Signature Red Ring™
- Anodised aircraft-grade aluminum; waterproof (IPX7) and impact-resistant

OPERATION

- Rear-positioned, ON/OFF button with Soft Touch Technology

ACCESSORIES

- Lanyard (included)

BATTERIES

- Powered by 6 AA batteries (included)

SPECS

- 0.95 lbs.
- Length: Compacted: 184mm / Extended: 197mm
- Diameter: (Head) 48 mm / (Barrel) 35 mm



OPTIMISED CLARITY

Eliminating inconsistencies in light, the OC™ (OPTIMISED Clarity) Technology provides intense, clear, pristine light that is easy on the eyes. This technology allows the light beam to be as bright on the edge as it is in the center when used in flood mode.



**IT'S
WATERPROOF!**
(IPX7 - submersible up to
1 metre for up to 30 minutes)



Signature Red Ring
and Tactical Edge



4x Adjustable Zoom



Glow-in-the-Dark Button
and Lanyard Loop



Display

- Display holds 6 pieces; 6 additional pieces are included as replenishments.
- Each BLAST comes with a gift box

Display Dimensions

(H) 304 x (W) 152 x (D) 222 mm

Gift Box Dimensions

(H) 178 x (W) 51 x (D) 50 mm



CODE	DESCRIPTION	Display Pack
NE6542	BLAST 1400 Lumen Flashlight	12 Pieces

NEBO® the **BIG Larry PRO** POWER WORK LIGHT



The **BRIGHTEST Larry yet**...The BIG Larry® PRO features a high-power, **500 lumen** C·O·B work light and red hazard flasher. **Fully rechargeable** and equipped with 2 magnetic charging stations, the BIG Larry® PRO is ready to handle any task at any time. The PRO also has a powerful magnetic base and adjustable steel clip for convenient hands-free lighting. When there is work to be done...bring a PRO!

- 3 LIGHT MODES**
- HIGH (500 lumens) - 4.5 hours / 37 metres
 - Red (45 lumens) - 8 hours / 13 metres
 - Red hazard flasher - 24 hours / 13 metres

- DESIGN**
- Fully dimmable
 - Direct-to-Red
 - Anodised aircraft-grade aluminum; water and impact-resistant
 - Adjustable clip
 - Powerful magnetic base
- OPERATION**
- Top-positioned, ON/OFF button
- ACCESSORIES**
- Two magnetic charging stations and cables
- BATTERIES**
- Powered by 1 Li-ion rechargeable battery (included) (Recharge time: 5 - 6 hours)
- SPECS**
- 0.8 lbs.
 - (H) 197 x (W) 30 x (D) 35 mm

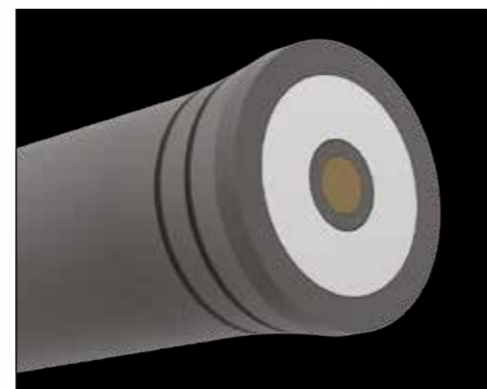
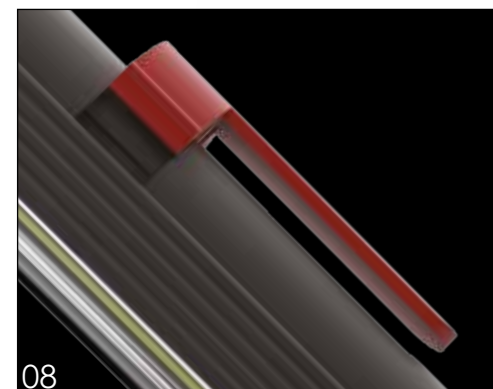


A new innovation in LED technology, C·O·B features smaller, easier clustered LED chips that work together as one lighting module. Because of this design, C·O·B outperforms traditional lighting with more output, less energy consumption and longer LED life span.



- Display holds 6 pieces in gift boxes - front display gift box is open for TRY ME.
- Each BIG Larry® Pro comes with a gift box.

Display Dimensions
(H) 394 x (W) 140 x (D) 197 mm
Gift Box Dimensions
(H) 394 x (W) 40 x (D) 34 mm



TRY ME counter display included

CODE	DESCRIPTION	Display Pack
NE6640	BIG Larry® PRO Power Work Light	12 Pieces

NEBO
the **Larry TILT**
The Directional Pocket Work Light!

The newest addition to the Larry lineup is the Larry™ TILT, equipped with a 120 lumen C-O-B LED work light and a 50 lumen flashlight. Using new Smart Touch Power Control, the TILT activates with just a touch. Adaptable for any work environment, the TILT provides hands-free lighting in three different ways: a hanging hook, a 200° pivoting stand and a magnetic base. Whether you are under the hood, under the sink or just out in the dark, the Larry™ TILT is the perfect directional pocket work light!

2 LIGHT MODES

- Top Light (50 lumens) - 3.5 hours / 27 metres
- Work Light (120 lumens) - 3 hours / 19 metres

DESIGN

- Weather-proof (IPX4) and impact-resistant
- Fully dimmable
- Non-slip compact body design
- Steel belt/pocket clip
- 200° pivoting stand
- Collapsible, hanging hook
- Powerful magnetic base

OPERATION

- Smart Touch Power Control, just touch to activate

BATTERIES

- Powered by 2 AAA batteries (included)

SPECS

- 0.15 lbs.
- (H) 162 x (W) 25 x (D) 19 mm



C-O-B (Chips on Board)

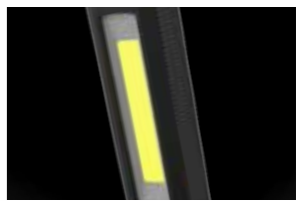
A new innovation in LED technology. C-O-B features smaller, easier clustered LED chips that are mounted directly to the circuit board. These LED chips work together as one lighting module. Because of the compact design, C-O-B outperforms traditional lighting by up to 50 times the light output per centimetre of light surface.



AVAILABLE COLOURS



200°
pivoting stand
(stands, hooks and magnetizes)



Powerful C-O-B Work Light



Steel Clip



Collapsible Hanging Hook

Display

- Display holds 16 pieces; one piece can be magnetized to the display backer as a demo model.
- Each Larry Tilt comes with a gift box with instructions

Display Dimensions

(H) 381 x (W) 190 x (D) 203 mm

Gift Box Dimensions

(H) 165 x (W) 29 x (D) 21 mm



TRY ME counter display included

CODE	DESCRIPTION	Display Pack
NE6539	LARRY TILT Directional Pocket Work Light	24 Pieces

NEBO[®] POPLITE



The new NEBO POPLITE is a versatile, compact light and lantern. Its expandable design allows the POPLITE to easily change from flood light, to spot light, to lantern, by sliding the body of the light. Small enough to fit on a key ring, the POPLITE also features a magnetic base and a detachable carabiner clip. To activate the light, just pop the carabiner clip from the light body and the POPLITE is ready to light the way!



3 LIGHT MODES

- Spot Light (100 LUX) - 2.5 hours / 40 metres
- Flood Light (20 lumens) - 2.5 hours / 11 metres
- Lantern (20 lumens) - 2.5 hours / 6 metres



DESIGN

- 8x adjustable zoom
- Anodised aircraft-grade aluminum; water and impact-resistant
- Lantern diffuser
- Carabiner clip
- Powerful magnetic base

OPERATION

- Pop-on power; just remove carabiner cap

BATTERIES

- Powered by 3 LR44 batteries (included)

SPECS

- 0.1 lbs.
- Length: Compacted: 64mm / Extended: 93mm
- Diameter: 0.75"



ASSORTED COLOURS

- Black
- Silver
- Red

Display includes area for testing magnetic base. 'TRY ME' purposes only, not intended for display.

Display Dimensions

(H) 304 x (W) 178 x (D) 152mm

Colour Assortment:

16 of each colour

Gift Box Dimensions

(H) 67 x (W) 25 x (D) 19mm

TRY ME counter display included

CODE	DESCRIPTION	Display Pack
NE6555	POPLITE Lantern and Flashlight	48 Pieces

NEBO[®] POPPY



Poppy is a combination 300 lumen C-O-B LED lantern and bright LED spot light. Poppy is the perfect light for indoor or outdoor use when versatility and powerful lighting are critical. With a rubberized impact-resistant body, Poppy is both rugged and soft to the touch. Poppy easily changes from spot light to lantern with just a slide of its top, revealing a full 360° C-O-B lantern. The handle is designed to easily adjust to conveniently serve both light modes.

2 LIGHT MODES

- C-O-B Lantern (300 lumens) - 7.5 hours / 15 metres
- Spot Light (120 lumens) - 18 hours / 120 metres

DESIGN

- Fully dimmable
- Rubberized body design; water and impact-resistant
- Adjustable handle
- Power memory setting

OPERATION

- Side-positioned, ON/OFF button

BATTERIES

- Powered by 3 AA batteries (included)

SPECS

- 0.3 lbs.
- Height: Closed - 5.46" / Open - 7.79"
- Diameter: 3.58"



AVAILABLE COLOURS

- Red
- Dark Gray
- Yellow
- Green

FREE with 12 piece order

Display Dimensions

(H) 330 x (W) 140 x (D) 197 mm

Colour Assortment:

6 of each colour

Gift Box Dimensions

(H) 143 x (W) 89 x (D) 89 mm



TRY ME counter display included

CODE	DESCRIPTION	Display Pack
NE6555	POPPY LANTERN	24 Pieces

NEBO[®] SLYDE[™] KING



With all of the features that you would expect from a SLYDE...and more! The SLYDE[™] KING is equipped with programmable memory settings for each light mode, a new C·O·B red light function, a 4x adjustable zoom and best of all...it's rechargeable!

4 LIGHT MODES

- Flashlight (330 lumens) - 2 hours / 123 metres
- Work Light (250 lumens) - 4.25 hours / 22 metres
- Red Light (40 lumens) - 4.75 hours / 7 metres
- Red Flash - 24 hours

LIGHT

- High-power 330 lumen LED flashlight
- High-power 250 lumen C·O·B work light
- High-power 40 lumen red light
- High-power red hazard flasher

DESIGN

- Fully rechargeable
- Memory power setting
- Convex lens
- Tactical edge
- 4x adjustable zoom
- Anodised aircraft-grade aluminium; water and impact-resistant
- Dimmable beam
- Work light is concealed inside the flashlight body
- Powerful magnetic base

OPERATION

- Side-positioned ON/OFF button
- Work light automatically turns ON when opened

BATTERIES

- Powered by 1 Li-ion rechargeable battery included (3-4 hour recharge time)

ACCESSORIES

- Micro USB to USB cable included

SPECS

- 0.8 lbs.
- Length: Compacted: 173mm
- Length: Extended: 227.5mm
- Diameter: (Head) 44.5mm / (Barrel) 32mm



RECHARGEABLE



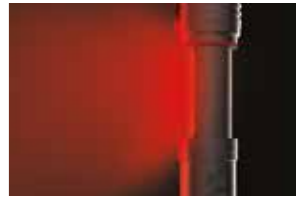
Micro USB
to USB
cable
included



330 Lumen Flashlight



250 Lumen C·O·B Work Light



40 Lumen Red Light



Red Hazard Flasher



Display

- Display holds 1 piece in front for consumer testing, additional pieces can be stored in the back as replenishments.
- Each SLYDE[™] KING comes with a gift box.
- Product attaches securely to the display using the magnetic base.

Display Dimensions

(H) 292 x (W) 184 x (D) 197mm

Gift Box Dimensions

(H) 178 x (W) 47.5 x (D) 47.5mm

C·O·B (Chips on Board)

A new innovation in LED technology. C·O·B features smaller, easier clustered LED chips that are mounted directly to the circuit board. These LED chips work together as one lighting module. Because of the compact design, C·O·B outperforms traditional lighting by up to 50 times the light output per centimetre of light surface.



OPTIMISED CLARITY

Eliminating inconsistencies in light, the OC[™] (OPTIMISED Clarity) Technology provides intense, clear, pristine light that is easy on the eyes. This technology allows the light beam to be as bright on the edge as it is in the center when used in flood mode.

TRY ME counter display included

CODE	DESCRIPTION	Display Pack
NE6434	SLYDE [™] KING Flashlight and Work Light	12 Pieces

NEBO[®] CRYKET™

The NEBO CRYKET™ is a versatile 3-in-1 LED light, featuring a 240 lumen C•O•B work light, a bright 250 lumen spot light and an intense red light. Its unique 90° swivel design allows the light's head to rotate into a forward-facing light, perfect for various working conditions. The magnetic base and steel clip provide convenient hands-free lighting.

3 LIGHT MODES

- Spot Light (250 lumens) - 3.5 hours / 113 metres
- C•O•B Flood Light (240 lumens) - 2.75 hours / 21 metres
- Red (15 lumens) - 6.5 hours / 6 metres

DESIGN

- Tough, lightweight and shock-proof
- Fully dimmable
- IPX4 weather resistance allows for all weather applications

OPERATION

- The Head rotates to achieve a lens displacement of 90 degrees
- An N35 magnet is embedded in the base of the handle

BATTERIES

- 4 AAA batteries included

SPECS

- 136g
- Length: 123mm
- Width: 41mm
- Diameter: 49mm

PATENT PENDING



C•O•B (Chips on Board)

A new innovation in LED technology. C•O•B features smaller, easier clustered LED chips that are mounted directly to the circuit board. These LED chips work together as one lighting module. Because of the compact design, C•O•B outperforms traditional lighting by up to 50 times the light output per centimetre of light surface.



SPOT LIGHT



FLOOD LIGHT



RED FLOOD LIGHT



- Display**
- Display holds 1 piece in front for consumer testing, additional pieces can be stored in the back as replenishments.
 - Each CRYKET™ comes with a gift box.
 - Product attaches securely to the display using the magnetic base.

Display Dimensions
(H) 325 x (W) 140 x (D) 195mm

Gift Box Dimensions
(H) 125 x (W) 75 x (D) 60mm

TRY ME counter display included

CODE	DESCRIPTION	Display Pack
NE6437	CRYKET™ Flashlight and Work Light	16 Pieces



ARC250

PRO BIKE LIGHT

The ARC250 Pro Bike Light features 2 independently controlled light sources, a 250 lumen spot light and a 115 lumen C·O·B flood light. The C·O·B flood light covers 250° using ARCUS LED Technology, which allows the user to be visible from multiple angles, enhancing the user's safety.

2 LIGHT MODES - SPOT LIGHT

- High (250 lumens) - 9 hours / 133 metres
- Low (120 lumens) - 15 hours / 86 metres

4 LIGHT MODES - C·O·B FLOOD LIGHT

- High (115 lumens) - 14 hours / 15 metres
- Low (60 lumens) - 23 hours / 11 metres
- Day Flash (15 lumens) - 24 hours / 15 metres
- Night Flash (15 lumens) - 15 hours / 15 metres

DESIGN

- Water and impact-resistant
- Mount allows light to swivel 90°
- Tool-free universal mounting system
- Quick-release mount design
- Battery / power indicator

OPERATION

- Top-positioned, independently controlled
- ON/OFF buttons for spot and flood light

BATTERIES

- Powered by 3 AA batteries (included)

SPECS

- 181 grams
- (H) 123mm x (W) 41mm



ARCUS

LED TECHNOLOGY

ARCUS is a new proprietary C·O·B LED technology that shapes light like never before with 250° of intense light coverage for maximum safety.



C·O·B (Chips on Board)

A new innovation in LED technology. C·O·B features smaller, easier clustered LED chips that are mounted directly to the circuit board. These LED chips work together as one lighting module. Because of the compact design, C·O·B outperforms traditional lighting by up to 50 times the light output per centimetre of light surface.



Spot Light



ARCUS C·O·B Flood Light



Spot Light and ARCUS C·O·B Flood Light

Packaging

- Each ARC250 features 'TRY ME' packaging and comes with an instruction manual

Dimensions

(H) 178 x (W) 92 x (D) 70mm



TRY ME packaging included

CODE	DESCRIPTION	Display Pack
NE6514	ARC 250 Bike Light	12 Pieces

NEBO[®] SLYDE+™



It's better than ever! We took our best-selling SLYDE Flashlight & Work Light and improved it every way imaginable. The new SLYDE + is now equipped with programmable memory settings for each light mode, a new C·O·B red light function, a 4x adjustable zoom and instant slide on. And best of all? With all these new great features, the new SLYDE+ is still the same price!

4 LIGHT MODES

- Flashlight (300 lumens) - 3 hours / 135 metres
- Work Light (200 lumens) - 3.5 hours / 21 metres
- Red (35 lumens) - 2 hours / 8 metres
- Red Flash (35 lumens) - 9 hours

DESIGN

- Convex lens
- Tactical edge
- 4x adjustable zoom
- Fully dimmable
- Direct-to-Red Feature (hold button and slide open)
- Memory Power Setting
- Powerful magnetic base
- Anodised aircraft-grade Aluminium; weather-proof (IPX4) and impact-resistant

OPERATION

- Side-positioned, ON/OFF button; hold to dim
- C·O·B Work Light automatically turns ON when opened and OFF when closed

BATTERIES

- Powered by 4 AAA batteries (included)

SPECS

- 318g
- Length: Compacted: 172mm / Extended: 230mm
- Diameter: (Head) 41mm / (Barrel) 35mm



SLIDE to reveal work light

(automatically activates when opened)



4x Adjustable Zoom



Extendable Body Design



Powerful Magnetic Base

C·O·B (Chips on Board)

A new innovation in LED technology. C·O·B features smaller, easier clustered LED chips that are mounted directly to the circuit board. These LED chips work together as one lighting module. Because of the compact design, C·O·B outperforms traditional lighting by up to 50 times the light output per centimetre of light surface.



OPTIMISED CLARITY

Eliminating inconsistencies in light, the OC™ (OPTIMISED Clarity) Technology provides intense, clear, pristine light that is easy on the eyes. This technology allows the light beam to be as bright on the edge as it is in the center when used in flood mode.



Display

- Display holds 1 piece in front for consumer testing, 8 additional pieces can be stored in the back as replenishments.

- Each SLYDE™+ comes with a gift box and instruction manual.

Display Dimensions

(H) 298mm x (W) 184mm x (D) 197mm

Gift Box Dimensions

(H) 173mm x (W) 44mm x (D) 44mm



TRY ME counter display included

CODE	DESCRIPTION	Display Pack
NE6525	SLYDE+	16 Pieces

DUO 250+ LUMEN HEADLAMP

This headlamp is the perfect hands-free light for working, hiking, camping and more! The new NEBO® DUO Headlamp is an all-powerful, hands-free lighting solution. A push button allows you to easily cycle through the FOUR light modes: LED Spot Light (250 Lumens), C•O•B Flood Light (80 Lumens), RED C•O•B steady and RED beacon mode. The red LED is a low-signature light, which ensures stealth in the dark, enhances night vision and makes reading in little to no light possible.

- 4 LIGHT MODES**
- Spot Light (250 lumens) - 3.5 hours / 122 metres
 - C•O•B Flood Light (80 lumens) - 7 hours / 13 metres
 - Red C•O•B (10 lumens) - 8 hours / 4 metres
 - Red Beacon - 48 hours / visible over 1 mile

- DESIGN**
- Tough, lightweight and shock-proof
 - Fully dimmable
 - Programmable memory setting
 - Direct to red light feature
 - Water and impact resistant, durable housing

- OPERATION**
- Power/dimmer button
 - 90° tilting headlamp
 - Dual adjustable head straps

- BATTERIES**
- 3 AAA batteries included

- SPECS**
- 75g, 100g with strap
 - Length: 60mm
 - Width: 40mm
 - Diameter: 49mm



C•O•B (Chips on Board)
A new innovation in LED technology. C•O•B features smaller, easier clustered LED chips that are mounted directly to the circuit board. These LED chips work together as one lighting module. Because of the compact design, C•O•B outperforms traditional lighting by up to 50 times the light output per centimetre of light surface.



- Display**
- Display holds 1 piece in front for consumer testing, additional pieces can be stored in the back as replenishments.
 - Each DUO HEADLAMP comes with a gift box.
 - Product attaches securely to the display using the magnetic base.

Display Dimensions
(H) 350 x (W) 150 x (D) 254mm

Gift Box Dimensions
(H) 155 x (W) 134 x (D) 135mm



TRY ME counter display included

CODE	DESCRIPTION	Display Pack
NE6444	DUO Headlamp - Spot and Flood Light	12 Pieces

TWYST™Z

Introducing the newest member of the TWYST™ lineup... The TWYST™Z features the same C•O•B lighting options as the original TWYST™: a high-power work light, lantern and flashlight. The TWYST™Z now features a 4x adjustable zoom. A powerful magnetic base also provides convenient hands-free lighting. TWYST™Z... shaping light like never before!

3 LIGHT MODES

- C•O•B Work Light (75 lumens) - 10 hours / 11 metres
- C•O•B Lantern (200 lumens) - 2 hours / 13 metres
- Flashlight (200 lumens) - 2 hours / 107 metres

DESIGN

- 4x adjustable zoom
- Enhanced C•O•B LED Technology
- Fully dimmable beam
- Anodised aircraft-grade Aluminium; water and impact-resistant
- Powerful magnetic base

OPERATION

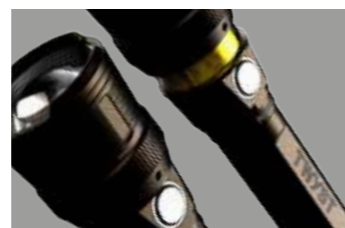
- Side-positioned ON/OFF button

BATTERIES

- Powered by 4 AAA batteries (included)

SPECIFICATIONS

- Weight with batteries - 250g
- Length - 160mm (Compacted) 172mm (Extended)
- Diameter - 45mm (Head) 25mm (Barrel)



Twist to reveal C•O•B LED



WORK LIGHT, LANTERN & FLASHLIGHT



75 Lumen C•O•B Work Light



4x Adjustable Zoom



200 Lumen C•O•B Lantern



Powerful Magnetic Base



C•O•B (Chips on Board)

A new innovation in LED technology. C•O•B features smaller, easier clustered LED chips that are mounted directly to the circuit board. These LED chips work together as one lighting module. Because of the compact design, C•O•B outperforms traditional lighting by up to 50 times the light output per centimetre of light surface.



Display

- Display holds 5 pieces - 1 'Try Me' and 4 in gift boxes; 11 additional pieces are included as replenishments.

- Each TWYST™Z comes with a gift box.

- Display allows product to be easily tested by consumers.

Display Dimensions

(H) 216mm x (W) 235mm x (D) 178mm

Gift Box Dimensions

(H) 165mm x (W) 476mm x (D) 476mm

TRY ME counter display included

CODE	DESCRIPTION	Display Pack
NE6372	TWYST-Z Work Light, Lantern & Flashlight	16 Pieces

The NEBO® CaseBrite™ offers more than just protection for your mobile device. The CaseBrite™ features a high-power, 200-lumen C•O•B flashlight that is up to 1200% brighter than a standard smart phone light. Designed specifically to not draw from your phone's battery, each CaseBrite™ is independently powered by an internal, rechargeable lithium-ion battery.



3 LIGHT MODES

- High (200 lumens) - 3 hours / 30 metres
- Low (20 lumens) - 24 hours
- Strobe (200 lumens) - 7 hours

LIGHT

- High-power 200 lumen C•O•B LED

DESIGN

- Impact-resistant, non-slip rubber case
- Screen protection lip
- Fully dimmable
- Slim 15mm profile
- Battery life indicator
- Fits iPhone 6/6S & 6/6S Plus

OPERATION

- Rear-positioned, ON/OFF button

ACCESSORIES

- USB to Micro USB charging cable (included)

BATTERIES

- Internal, rechargeable lithium-ion battery (Recharge time - up to 3 hours)

SPECIFICATIONS

- 6/6S - L 140mm x W 70mm x D 16mm
- weight - 85g
- 6/6S Plus L - 160mm x W 80mm x D 16mm
- weight - 103g

 RECHARGEABLE



Display code NE6349

- Display holds 6 pieces (three 6/6S; three 6/6S Plus) 2 additional pieces are stored underneath as replenishments.
- Each CaseBrite™ comes with a gift box and instruction manual.

Display Dimensions
(H) 318 x (W) 254 x (D) 235mm

Box Dimensions (6/6S)
(H) 171 x (W) 111 x (D) 25mm



CODE	DESCRIPTION	Display Pack
NE6347	CaseBrite™ iPhone 6/6S Case + Light	4 Pieces
NE6348	CaseBrite™ iPhone 6/6S Plus Case + Light	4 Pieces

The REDLINE® V is a powerful, **500 lumen** flashlight, featuring OC™ optics. The REDLINE® V is **completely waterproof** (IPX7) and is also equipped with a steel clip, powerful magnetic base, 4x zoom and 5 light modes (high, medium, low, defensive strobe & S.O.S.).



5 LIGHT MODES

- High (500 lumens) - 2.5 hours / 170 metres
- Medium (200 lumens) - 6 hours / 110 metres
- Low (50 lumens) - 22 hours / 50 metres
- Strobe (500 lumens) - 6 hours
- S.O.S. (500 lumens) - 48 hours

DESIGN

- Convex lens
- Tactical edge
- 4x adjustable zoom
- Signature Red Ring®
- Anodised aircraft-grade aluminum; waterproof (IPX7) and impact-resistant
- Steel belt/pocket clip
- Powerful magnetic base

OPERATION

- Rear-positioned, glow-in-the-dark ON/OFF button with Soft Touch Technology

BATTERIES

- Powered by 3 AAA batteries (included)

SPECS

- 0.35 lbs.
- Length: Compacted: 127 / Extended: 140mm
- Diameter: (Head) 35 / (Barrel) 32 mm

U.S. PATENT

- 659,869 S

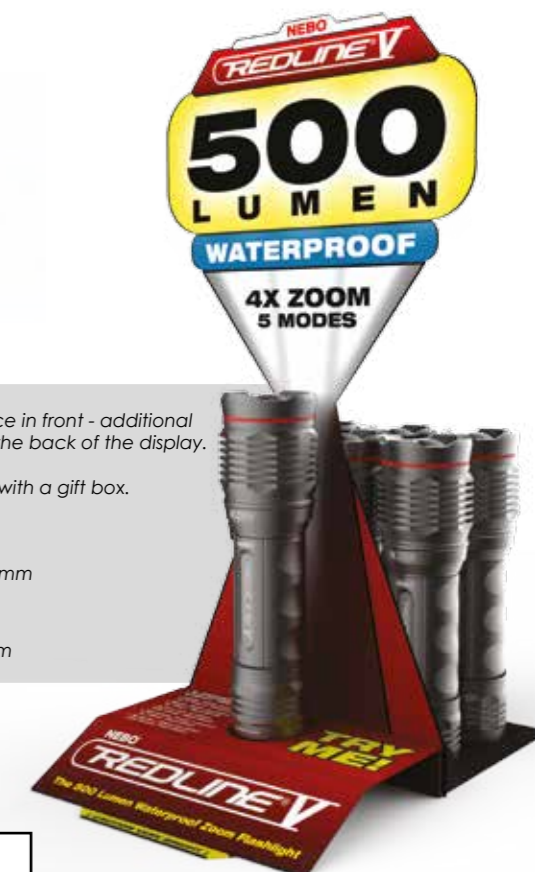


The OC™ (OPTIMISED Clarity) Technology creates a perfectly dispersed beam of intense, pristine light that is as bright on the edge as it is in the center when used in flood mode.

- Display showcases 1 piece in front - additional pieces can be stored in the back of the display.
- Each REDLINE® V comes with a gift box.

Display Dimensions
(H) 304 x (W) 152 x (D) 222 mm

Gift Box Dimensions
(H) 131 x (W) 38 x (D) 38 mm



TRY ME counter display included

CODE	DESCRIPTION	Display Pack
NE6639	REDLINE™ V 500 Lumen Flashlight	16 Pieces

The Lil Larry™ knows how to light up a room! Equipped with new C•O•B LED technology, the Lil Larry™ outputs 250 lumens of intense light. Secondary light modes include Low (95 lumens) and the Emergency Red Flash mode. This intense red light is perfect for distress signaling or roadside emergencies. The anodised aluminium body and recessed LED housing ensures that the Lil Larry™ can handle any situation. It's small size makes this flashlight extremely portable.

3 LIGHT MODES

- High (250 lumens) - 3 hours / 29 metres
- Low (95 lumens) - 10 hours / 17 metres
- Red Flash - 10 hours • Red hazard flasher - 40 hours

LIGHT

- High-power 250 lumen C-O-B LED work light
- Low-power 95 lumen C-O-B LED work light
- High-power C-O-B LED emergency red flasher

DESIGN

- Anodised aircraft-grade aluminium
- Water and impact-resistant
- Powerful magnetic base

OPERATION

- Top-positioned, ON/OFF button

BATTERIES

- Powered by 3 AAA batteries (included)

SPECIFICATIONS

- Weight with batteries - 89g
- Length - 151mm
- Diametre - 20mm (Head) 15mm (Barrel)



ASSORTED COLOURS

- Black
- Silver
- Red



Display

- Display holds 18 pieces (5 red, 5 silver, 8 black); 3 in front for consumer testing, 15 additional pieces stored in the back as replenishments.
- Each Lil Larry™ comes with a gift box.
- Product attaches securely to the display using the magnetic base.

Display Dimensions

(H) 250mm x (W) 140mm x (D) 190mm



TRY ME counter display included

CODE	DESCRIPTION	Display Pack
NE6373	Lil Larry™ Power C•O•B LED Work Light	18 Pieces

The BIG Larry™ knows how to light up a room! Equipped with new C•O•B LED technology, the BIG Larry™ outputs 400 lumens of intense light. Secondary light modes include Low (160 lumens) and the Emergency Red Flash mode. This intense red light is perfect for distress signaling or roadside emergencies. The anodised aluminium body and recessed LED housing ensures that the BIG Larry™ can handle any situation.

3 LIGHT MODES

- High (400 lumens) - 4.5 hours / 29 m
- Low (160 lumens) - 15 hours / 17 m
- Red Flash - 40 hours

LIGHT

- High-power 400 lumen C-O-B LED work light
- Low-power 160 lumen C-O-B LED work light
- High-power C-O-B LED emergency red flasher

DESIGN

- Anodised aircraft-grade aluminium
- Water and impact-resistant
- Powerful magnetic base

OPERATION

- Top-positioned, ON/OFF button

BATTERIES

- Powered by 3 AA batteries (included)

SPECIFICATIONS

- Weight with batteries - 211g
- L 188mm x W 28mm x D 28mm



ASSORTED COLOURS

- Black
- Silver



TRY ME counter display included

CODE	DESCRIPTION	Display Pack
NE6306	BIG Larry™ Power C•O•B LED Work Light	14 Pieces



Display

- Each BIG Larry™ comes with a gift box.
- Display holds 14 pieces; 2 in front for consumer testing, 12 additional pieces stored behind as replenishments.
- Assorted colour display: 7 black & 7 silver.
- Product attaches securely to the display using the magnetic base.

Display Dimensions

(H) 304mm x (W) 139mm x (D) 139mm

The Larry™C is now **BRIGHTER THAN EVER!** Now, equipped with new C·O·B LED technology, the Larry™C outputs **170 lumens** of intense light. The rotating magnetic clip gives you convenient hands-free lighting by attaching to virtually anything. The reinforced plastic body design is water and impact-resistant, making this light basically indestructible.



1 LIGHT MODE
 • 170 lumen C·O·B LED work light
 5.6 hours / 20 metres

LIGHT

- High-power 170 lumen C·O·B LED work light

DESIGN

- Water and impact-resistant
- Ergonomic non-slip grip
- 180° rotating magnetic clip
- Protective LED housing

OPERATION

- Top-positioned, ON/OFF button

BATTERIES

- Powered by 3 AAA batteries (included)

SPECIFICATIONS

- Weight with batteries - 67g
- Length - 160mm
- Width - 32mm
- Diameter - 16mm



ASSORTED COLOURS



Display Dimensions
 (H) 222 x (W) 152 x (D) 152mm

Gift Box Dimensions
 (H) 165 x (W) 38 x (D) 19mm



TRY ME counter display included

CODE	DESCRIPTION	Display Pack
NE6327	LarryC	24 Pieces

The newest rechargeable REDLINE® is the REDLINE® RC™ with MagDock. The MagDock is a magnetic charging station that docks and charges your REDLINE®. Small enough to fit in the palm of your hand, the REDLINE® RC™ with MagDock is fully equipped with all of the features that make the REDLINE® series so popular.



4 LIGHT MODES
 • High (320 lumens) - 1 hour / 110 metres
 • Medium (125 lumens) - 2 hours / 70 metres
 • Low (32 lumens) - 9 hours / 35 metres
 • Strobe (320 lumens) - 2 hours / 110 metres

LIGHT

- High-power 320 lumen LED

DESIGN

- 4x adjustable zoom
- Anodised aircraft-grade Aluminium; water and impact-resistant
- OC™ Technology
- Convex lens
- Signature Red Ring™
- Steel belt/pocket clip
- Ergonomic non-slip grip
- Magnetic base
- Protective LED housing
- Charging indicator light

OPERATION

- Side-positioned, ON/OFF button

ACCESSORIES

- USB to Micro USB cable included
- Lanyard included

BATTERIES

- Internal, rechargeable lithium-ion battery (Recharge time - up to 2 hours)

SPECIFICATIONS

- Weight - 94g
- Length - 91mm (Compacted) 98mm (Extended)
- Diameter - 31mm (Head) 27mm (Barrel)



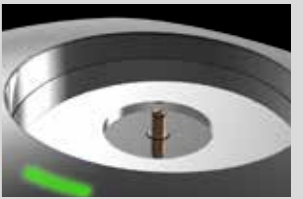
4x Adjustable Zoom



Lanyard Loop and Magnetic Base



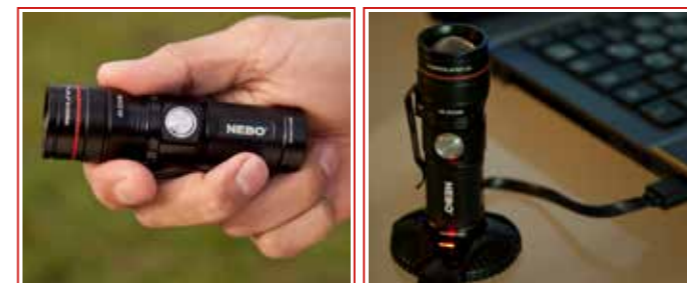
USB to Micro USB Cable



MagDock Battery Indicator

Display Dimensions
 (H) 222 x (W) 152 x (D) 152mm

Gift Box Dimensions
 (H) 165 x (W) 38 x (D) 19mm



TRY ME counter display included

CODE	DESCRIPTION	Display Pack
NE6392	REDLINE® RC™ with MagDock	10 Pieces



MICRO
REDLINE®

Don't let the micro size fool you...the Micro REDLINE® OC™ packs enough power to carry the REDLINE® name. This light is small enough to fit in the palm of your hand, but bright enough for any situation. Equipped with OC™ Technology the Micro has a perfectly dispersed beam of light while in flood mode. The Micro REDLINE® OC™...small never shined so big!



4 LIGHT MODES

- High 62 Lumens - 3.5 hours / 76 m
- Medium 32 Lumens - 6 hours / 54 m
- Low 8 Lumens - 10 hours / 25 m
- Strobe 62 Lumens - 7 hours / 76 m



LIGHT

- High-power 62 Lumen LED

DESIGN

- Anodised aircraft-grade aluminium
- Water and impact-resistant
- OC™ Technology
- Convex lens
- 6x adjustable beam
- Steel belt/pocket clip
- Magnetic base

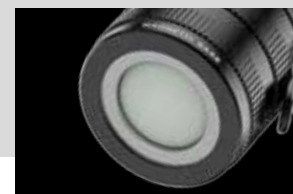


OPERATION

- Rear-positioned, glow-in-the-dark ON/OFF button with Soft Touch Technology

BATTERIES

- Powered by 1 CR123A battery (included)



SPECIFICATIONS

- Weight with battery - 51g
- L 68mm x W 30mm x D 25mm



REDLINE®

The REDLINE® OC™ outputs 100 LUM of pristine white light. 100 LUM is bright, but what makes the OC™ so special is the OC™ (OPTIMISED Clarity) Technology. Coupled with the convex lens, the OC™ Technology creates OPTIMISED clarity with a perfectly dispersed beam of light while in flood mode. This sophisticated technology provides the intensity of a 100 LUM light that is easy on the eyes. The REDLINE® OC™...optimised clarity.



2 LIGHT MODES

- High 100 Lumens - 2.5 hours / 94 m
- Strobe -4.5 hours



LIGHT

- High-power 100 Lumen LED

DESIGN

- Anodised aircraft-grade aluminium
- Water and impact-resistant
- OC™ Technology
- Convex lens
- 6x adjustable beam
- Dual-direction belt/pocket clip
- Magnetic base

OPERATION

- Rear-positioned, glow-in-the-dark ON/OFF button with Soft Touch Technology

ACCESSORIES

- Lanyard included

BATTERIES

- Powered by 1 AA battery (included)

SPECIFICATIONS

- Weight with batteries - 115g
- Length - 105mm extended 115mm
- Diametre - 35mm (Head) 26mm (Barrel)



Magnetic Display

- Display holds 10 pieces, 6 additional pieces are included as replenishments
- Products are magnetically secured to the metal display

Display Dimensions

(H) 203mm x (W) 152mm x (D) 98mm



TRY ME counter display included

CODE	DESCRIPTION	Display Pack
NE6272	Micro REDLINE® OC	16 Pieces



Magnetic Display

- Display holds 12 pieces, 4 additional pieces are included as replenishments.
- Products are magnetically secured to the metal display.

Display Dimensions

(H) 203mm x (W) 190mm x (D) 210mm



TRY ME counter display included

CODE	DESCRIPTION	Display Pack
NE6092	REDLINE® OC	16 Pieces

TRANSPORT®



The TRANSPORT DC® is a compact, rechargeable flashlight that provides powerful bright light at your fingertips! Just plug directly into your car, van, boat or any other 12V outlet to charge your flashlight. The TRANSPORT DC® is compatible with any DC 12V socket. Ideal for travel, the TRANSPORT DC® conveniently fits in your pocket, handbag, glove compartment or travel bag.

1 LIGHT MODE
• ON (125 lumens) - 1 hour / 90 metres



LIGHT

- High-power 125 lumen LED

DESIGN

- Fully rechargeable
- Fits any 12V outlet (car cigarette lighter)
- Anodised aircraft-grade aluminium; water and impact-resistant

OPERATION

- Top-positioned ON/OFF dial; twist to activate

BATTERIES

- Powered by 1 16340 Lithium Ion rechargeable battery (included)

SPECIFICATIONS

- Weight with battery - 85g
- L 94mm x W 30mm x D 30mm



ASSORTED COLOURS
Black Silver



Display

- Display holds 8 pieces + 1 piece is stored in the front of the display to show how product sits in 12V outlet
- Assorted COLOURS: 12 black & 6 silver
- 9 additional pieces are included as replenishments

Display Dimensions
(H) 184mm x (W) 193mm x (D) 158mm



CODE	DESCRIPTION	Display Pack
NE6311	TRANSPORT®DC	18 Pieces

LUMO™

Compact, handy and bright...the LUMO™ Clip Light by NEBO® is the perfect "whatever you need it to be" light. Key chain light, purse light, backpack light, book light...the possibilities are endless. This compact 25 lumen light comes with a carabiner attachment to clip anywhere you need. The white top of the LUMO™ is a diffuser dome. This dome helps spread the light evenly to create a more omnidirectional light source. LUMO™ Clip Light...the brilliant clip light!

1 LIGHT MODE
• 25 lumens - 5 hours / 3 metres



LIGHT

- High-power 25 lumen LED

DESIGN

- Anodised aircraft-grade aluminium, water and impact-resistant
- Carabiner clip
- Glow-in-the-dark button
- Diffuser dome

OPERATION

- Rear-positioned glow-in-the-dark ON/OFF button

BATTERIES

- Powered by 3 LR44 batteries (included)

SPECIFICATIONS

- Weight with batteries - 25g
- L 50mm x W 19mm x D 19mm



ASSORTED COLOURS
Black Silver Red Blue



Display

- Display holds 48 pieces total; 32 pieces on display and 16 additional pieces stored inside.
- Assorted COLOURS: 12 of each colour.
- Display allows product to be easily tested by consumers.

Display Dimensions
(H) 228mm x (W) 165mm x (D) 165mm



CODE	DESCRIPTION	Display Pack
NE6095	Lumo™	48 Pieces

SLYDE KING



With all of the features that you would expect from a SLYDE...and more! The SLYDE™ KING is equipped with programmable memory settings for each light mode, a new C-O-B red light function, a 4x adjustable zoom and best of all...it's rechargeable!



330 Lumen Flashlight

4 LIGHT MODES

- Flashlight (330 lumens) - 2 hours / 123 metres
- Work Light (250 lumens) - 4.25 hours / 22 metres
- Red Light (40 lumens) - 4.75 hours / 7 metres
- Red Flash - 24 hours



250 Lumen C-O-B Work Light

LIGHT

- High-power 330 lumen LED flashlight
- High-power 250 lumen C-O-B work light
- High-power 40 lumen red light
- High-power red hazard flasher

DESIGN

- Fully rechargeable
- Memory power setting
- Convex lens
- Tactical edge
- 4x adjustable zoom
- Anodised aircraft-grade aluminium; water and impact-resistant
- Dimmable beam
- Work light is concealed inside the flashlight body
- Powerful magnetic base

OPERATION

- Side-positioned ON/OFF button
- Work light automatically turns ON when opened

BATTERIES

- Powered by 1 Li-ion rechargeable battery included (3-4 hour recharge time)

ACCESSORIES

- Micro USB to USB cable included

SPECS

- 0.8 lbs.
- Length: Compacted: 173mm
- Length: Extended: 227.5mm
- Diameter: (Head) 44.5mm / (Barrel) 32mm

Red Hazard Flasher



CODE	DESCRIPTION
NB6434	SLYDEKING

SLYDE+



It's better than ever! We took our best-selling SLYDE Flashlight & Work Light and improved it every way imaginable. The new SLYDE+ is now equipped with programmable memory settings for each light mode, a new C-O-B red light function, a 4x adjustable zoom and instant slide on. And best of all? With all these new great features, the new SLYDE+ is still the same price!

4 LIGHT MODES

- Flashlight (300 lumens) - 3 hours / 135 metres
- Work Light (200 lumens) - 3.5 hours / 21 metres
- Red (35 lumens) - 2 hours / 8 metres
- Red Flash (35 lumens) - 9 hours



SLIDE
to reveal
work light
(automatically
activates when
opened)

DESIGN

- Convex lens
- Tactical edge
- 4x adjustable zoom
- Fully dimmable
- Direct-to-Red Feature (hold button and slide open)
- Memory Power Setting
- Powerful magnetic base
- Anodised aircraft-grade Aluminium; weather-proof (IPX4) and impact-resistant

OPERATION

- Side-positioned, ON/OFF button; hold to dim
- C-O-B Work Light automatically turns ON when opened and OFF when closed

BATTERIES

- Powered by 4 AAA batteries (included)

SPECS

- 318g
- Length: Compacted: 172mm / Extended: 230mm
- Diameter: (Head) 41mm / (Barrel) 35mm



CODE	DESCRIPTION
NB6525	SLYDE+™

TRY ME Pack size
300mm x 120mm



CRYKET™

The CRYKET™ is a versatile 3-in-1 LED light, featuring a 240 lumen COB work light, a bright 250 lumen spot light and an intense red light. Its unique 90° swivel design allows the light's head to rotate into a forward-facing light, perfect for various working conditions. The magnetic base and steel clip provide convenient hands-free lighting.



WORK LIGHT

5 LIGHT MODES

- Focused High 250 Lumens - 3.5 hours / 113 m
- Focused Low 45 Lumens - 15 hours / 51 m
- Work High 220 Lumens - 2.75 hours / 21 m
- Work Low 30 Lumens - 22 hours / 7 m
- RED 15 Lumens - 6.5 hours / 6 m

LIGHT

- Dimmable white lights
- 220 Lumens C•O•B LED ring flood light
- 250 Lumens white LED focused light
- 15 Lumens red ring light for night vision

DESIGN

- Powerful hands-free magnetic base
- Rubberised grip
- Steel pocket / belt clip
- Anodised aircraft-grade Aluminium
- Water and impact-resistant design
- Powered by 4 AAA batteries (included)

SPECIFICATIONS

- Weight with batteries - 182g
- Length - 125mm Diametre - 41mm



FLOOD LIGHT



RED FLOOD LIGHT

90° swivel tilt with a simple twist



CODE	DESCRIPTION
NB6437	CRYKET™ Flashlight and Work Light

TRY ME Pack size
240mm x 120mm



TWYST™Z

Introducing the newest member of the TWYST™ lineup...TWYST™Z! The TWYSTZ features the same C•O•B lighting options as the original TWYST: a high-power work light, lantern and flashlight! The TWYSTZ now features a 4x adjustable zoom. A powerful magnetic base also provides convenient hands-free lighting. TWYSTZ... shaping light like never before!



CODE	DESCRIPTION
NB6372	TWYST-Z



3 LIGHT MODES

- C•O•B Work Light (75 lumens) - 10 hours / 11 metres
- C•O•B Lantern (200 lumens) - 2 hours / 13 metres
- Flashlight (200 lumens) - 2 hours / 107 metres

LIGHT

- 75 Lumen C•O•B LED Work Light
- 200 Lumen C•O•B LED Lantern
- 200 Lumen Flashlight

DESIGN

- 4x adjustable zoom
- Enhanced C•O•B LED Technology
- Fully dimmable beam
- Anodised aircraft-grade Aluminium; water and impact-resistant
- Powerful magnetic base

OPERATION

- Side-positioned ON/OFF button

BATTERIES

- Powered by 4 AAA batteries (included)

SPECIFICATIONS

- Weight with batteries - 250g
- Length - 160mm (Compacted) 172mm (Extended)
- Diametre - 45mm (Head) 25mm (Barrel)



TRY ME Pack size
300mm x 120mm



DUO 250+ LUMEN HEADLAMP

This headlamp is the perfect hands-free light for working, hiking, camping and more! The new NEBO® DUO Headlamp is an all-powerful, hands-free lighting solution. A push button allows you to easily cycle through the FOUR light modes: LED Spot Light (250 Lumens), C•O•B Flood Light (80 Lumens), RED C•O•B steady and RED beacon mode. The red LED is a low-signature light, which ensures stealth in the dark, enhances night vision and makes reading in little to no light possible.



SPOT LIGHT

4 LIGHT MODES

- Spot Light (250 lumens, Low 30) - 3.5 hours / 122 m
- C•O•B Flood Light (80 lumens, Low 8) - 7 hours / 13 m
- Red C•O•B (10 lumens, Low 2) - 8 hours / 4 m
- Red Beacon - 48 hours / visible over 1 mile



FLOOD LIGHT

DESIGN

- Tough, lightweight, shock-proof
- Fully dimmable
- Programmable memory setting
- Direct to red light feature
- Water and impact resistant
- Dual adjustable head straps

OPERATION

- Power/dimmer button
- 90° tilting headlamp
- Top positioned on/off button

BATTERIES

- 3 AAA batteries included

SPECS

- 75g, 100g with strap
- Length: 60mm
- Width: 40mm
- Diameter: 49mm



RED STEADY LIGHT



RED BEACON LIGHT



90° adjustable tilt



C•O•B (Chips on Board)

A new innovation in LED technology. C•O•B features smaller, easier clustered LED chips that are mounted directly to the circuit board. These LED chips work together as one lighting module. Because of the compact design, C•O•B outperforms traditional lighting by up to 50 times the light output per centimetre of light surface.

CODE	DESCRIPTION
NB6444	DUO HEADLAMP

REDLINE ZOOM

The REDLINE ZOOM has a high-power LED that outputs an incredible 270 lumens of intense white light and it also features an impressive 6x zoom. Hard/Soft Touch Technology allows you to easily cycle through the five impressive light modes.



5 LIGHT MODES

- High (270 lumens) - 2.5 hours / 180 m
- Medium (112 lumens) - 6.5 hours / 126 m
- Low (50 lumens) - 20 hours / 80 m
- Strobe (270 lumens) - 24 hours / 180 m
- S.O.S (270 lumens) - 20 hours / 180 m

LIGHT

- 5 light modes and 6 x zoom

DESIGN

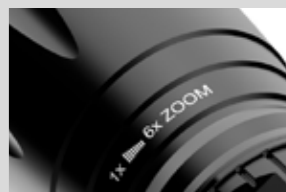
- Flood light to spot light
- Convex lens
- Strong double steel clip
- Anodised aircraft-grade aluminium
- Water and impact-resistant
- Powerful magnetic base
- Rear positioned on/off button with soft touch technology

BATTERIES

- Powered by 3 AAA batteries (included)

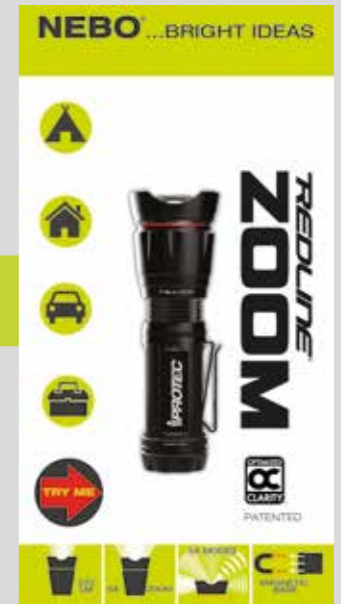
SPECIFICATIONS

- Weight with batteries - 148g
- Length - 120mm
- Diameter - 40mm (Head) 25mm (Barrel)



CODE	DESCRIPTION
NB6380	Redline ZOOM

TRY ME Pack size
240mm x 120mm



the BIG Larry™ POWER WORK LIGHT

The BIG Larry™ knows how to light up a room! Equipped with new C•O•B LED technology, the BIG Larry™ outputs 400 lumens of intense light. Secondary light modes include Low (160 lumens) and the Emergency Red Flash mode. This intense red light is perfect for distress signaling or roadside emergencies. The anodised aluminium body and recessed LED housing ensures that the BIG Larry™ can handle any situation.



3 LIGHT MODES

- High (400 lumens) - 4.5 hours / 29 m
- Low (160 lumens) - 15 hours / 17 m
- Red Flash - 40 hours




LIGHT

- High-power 400 lumen C-O-B LED work light
- Low-power 160 lumen C-O-B LED work light
- High-power C-O-B LED emergency red flasher

DESIGN

- Anodised aircraft-grade aluminium
- Water and impact-resistant
- Powerful magnetic base



OPERATION

- Top-positioned, ON/OFF button

BATTERIES

- Powered by 3 AA batteries (included)
- 3 spare AA Duracell batteries (included)



SPECIFICATIONS

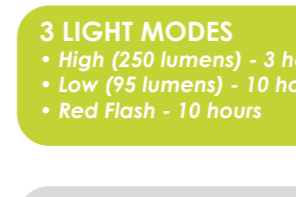
- Weight with batteries - 211g
- Length - 188mm
- Diametre - 28mm (Head) 22mm (Barrel)



CODE	DESCRIPTION
NB6306	BIG Larry™ Power C•O•B LED Work Light

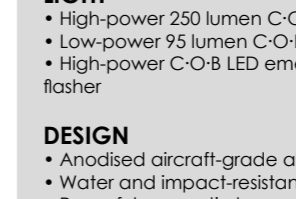
LiL Larry™ POWER POCKET LIGHT

The LiL Larry™ knows how to light up a room! Equipped with new C•O•B LED technology, the LiL Larry™ outputs 250 lumens of intense light. Secondary light modes include Low (95 lumens) and the Emergency Red Flash mode. This intense red light is perfect for distress signaling or roadside emergencies. The anodised aluminium body and recessed LED housing ensures that the LiL Larry™ can handle any situation. It's small size makes this flashlight extremely portable.



3 LIGHT MODES

- High (250 lumens) - 3 hours / 29 metres
- Low (95 lumens) - 10 hours / 17 metres
- Red Flash - 10 hours

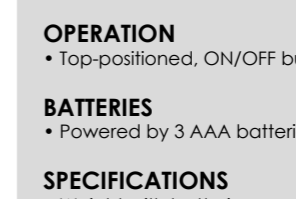


LIGHT

- High-power 250 lumen C-O-B LED work light
- Low-power 95 lumen C-O-B LED work light
- High-power C-O-B LED emergency red flasher

DESIGN

- Anodised aircraft-grade aluminium
- Water and impact-resistant
- Powerful magnetic base



OPERATION

- Top-positioned, ON/OFF button

BATTERIES

- Powered by 3 AAA batteries (included)



SPECIFICATIONS

- Weight with batteries - 89g
- Length - 151mm
- Diametre - 20mm (Head) 15mm (Barrel)



CODE	DESCRIPTION
NB6373	LiL Larry™



TRY ME Pack size
300mm x 120mm



TRY ME Pack size
240mm x 120mm

The Larry™C is now **BRIGHTER THAN EVER!** Now, equipped with new C•O•B LED technology, the Larry™C outputs **170 lumens** of intense light. The rotating magnetic clip gives you convenient hands-free lighting by attaching to virtually anything. The reinforced plastic body design is water and impact-resistant, making this light tougher than ever.



1 LIGHT MODE
 • 170 lumen C-O-B LED work light
 5.6 hours / 20 metres

LIGHT

- High-power 170 lumen C-O-B LED work light

DESIGN

- Water and impact-resistant
- Ergonomic non-slip grip
- 180° rotating magnetic clip
- Protective LED housing

OPERATION

- Top-positioned, ON/OFF button

BATTERIES

- Powered by 3 AAA batteries (included)

SPECIFICATIONS

- Weight with batteries - 67g
- Length - 160mm
- Width - 32mm
- Diametre - 16mm



CODE	DESCRIPTION
NB6327	LARRY C™

The newest rechargeable REDLINE® is the REDLINE® RC™ with MagDock. The MagDock is a magnetic charging station that docks and charges your REDLINE®. Small enough to fit in the palm of your hand, the REDLINE® RC™ with MagDock is fully equipped with all of the features that make the REDLINE® series so popular.



4 LIGHT MODES

- High (320 lumens) - 1 hour / 110 metres
- Medium (125 lumens) - 2 hours / 70 metres
- Low (32 lumens) - 9 hours / 35 metres
- Strobe (320 lumens) - 2 hours / 110 metres



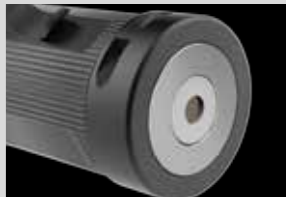
4x Adjustable Zoom

LIGHT

- High-power 320 lumen LED

DESIGN

- 4x adjustable zoom
- Anodised aircraft-grade Aluminium; water and impact-resistant
- OC™ Technology
- Convex lens
- Signature Red Ring™
- Steel belt/pocket clip
- Ergonomic non-slip grip
- Magnetic base
- Protective LED housing
- Charging indicator light



Lanyard Loop and Magnetic Base

OPERATION

- Side-positioned, ON/OFF button

ACCESSORIES

- USB to Micro USB cable included
- Lanyard included



USB to Micro USB Cable

BATTERIES

- Internal, rechargeable lithium-ion battery (Recharge time - up to 2 hours)

SPECIFICATIONS

- Weight - 94g
- Length - 91mm (Compacted) 98mm (Extended)
- Diametre - 31mm (Head) 27mm (Barrel)



MagDock Battery Indicator



TRY ME Pack size
240mm x 120mm



TRY ME Pack size
240mm x 120mm

LUMO™

Compact, handy and bright...the LUMO™ Clip Light by NEBO® is the perfect "whatever you need it to be" light. Key ring light, handbag light, travel light, book light...the possibilities are endless. This compact 25 lumen light comes with a carabiner attachment to clip anywhere you need. The white top of the LUMO is a diffuser dome. This dome helps spread the light evenly to create a more omni directional light source. LUMO Clip Light...the brilliant clip light!



1 LIGHT MODE
• 25 lumens - 5 hours / 3 metres

LIGHT
• High-power 25 lumen LED

DESIGN
• Anodised aircraft-grade aluminium
• Water and impact-resistant
• Carabiner clip
• Glow-in-the-dark button
• Diffuser dome

OPERATION
• Rear-positioned glow-in-the-dark ON/OFF button

BATTERIES
• Powered by 3 LR44 batteries (included)

SPECIFICATIONS
• Weight with batteries - 25g
• Length - 50mm
• Diametre - 15mm



TRY ME Pack size
130mm x 90mm



CODE	DESCRIPTION
NB6095	LUMO™

THE RECHARGEABLE WORKBRITE®



Never worry about replacing batteries again, with The Rechargeable WORKBRITE 2™. This work light is equipped with a 220 lumen C•O•B LED work light, a 120 lumen flashlight and a rear, emergency red flasher LED. The WORKBRITE 2 provides hands-free lighting in three different ways: a hanging hook, a 200° pivoting stand and a magnetic base. Whether you are under the hood, under the sink or just out in the dark, the WORKBRITE 2 works great for any application. WORKBRITE 2...It stands! It hooks! It sticks! It lights! It recharges! It WORKS!

RECHARGEABLE

3 LIGHT MODES
• Work Light (220 lumens) - 3 hours / 20 m
• Flashlight (120 lumens) - 8 hours / 47 m
• Red Flash - 200 hours



LIGHT
• High-power 120 lumen LED flashlight
• High-power 220 lumen C•O•B LED work light
• Emergency Red Flasher LED

DESIGN
• Fully rechargeable
• Water and impact-resistant
• Ergonomic, non-slip grip
• 200° pivoting magnetic stand
• Collapsible, hanging hook

OPERATION
• Front-positioned, ON/OFF button
• Emergency Red Flash is independently controlled; press light to activate

BATTERIES
• Powered by 1 18650 Li-ion Rechargeable Battery

SPECIFICATIONS
• Weight with battery - 174g
• Length - 215mm
• Depth - 38mm



CODE	DESCRIPTION
NB6305	WORKBRITE 2™ Rechargeable



TRY ME Pack size
300mm x 120mm

PRO1400LIGHT



The brightest flashlight ever created by NEBO is here – PRO1400LIGHT. With **1400 lumens** of high intensity light, this must-have flashlight can throw a spectacularly bright beam over 260 metres. The BLAST is **completely waterproof** and ready for any weather condition. Want more? How about a 4x zoom and 5 light modes (high, medium, low, defensive strobe & flashing beacon).

5 LIGHT MODES

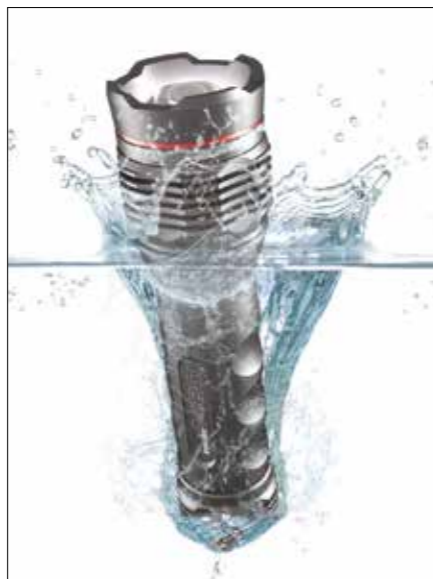
- High (1400 lumens) - 2.5 hours / 260 metres
- Medium (560 lumens) - 7 hours / 180 metres
- Low (140 lumens) - 30 hours / 90 metres
- Strobe (1400 lumens) - 6 hours
- Beacon (200 lumens) - 120 hours

DESIGN

- Powerful 1400 lumens of white LED light
- 5 light modes
- Aluminium body
- Signature RED RING™
- Glow-in-the-dark reflector for low light
- Waterproof up to 1 metre deep (IPX7)
- Lanyard included
- Powered by 6 AA batteries (included)

SPECS

- Weight with batteries - 598 g
- Length - 170mm
- Diametre - 49mm (Head) 39mm (Barrel)



1400 LUMENS



OPTIMISED CLARITY

Eliminating inconsistencies in light, the OC™ (OPTIMISED Clarity) Technology provides intense, clear, pristine light that is easy on the eyes. This technology allows the light beam to be as bright on the edge as it is in the center when used in flood mode.

Pack Size
(H) 265 x (W) 112 x (D) 45mm



CODE	DESCRIPTION
IP6541	iPROTEC PRO1400LIGHT

PRO400LIGHT



The PRO400LIGHT offers 400 lumens of high intensity light and can throw a spectacularly bright beam over 180 metres. The PRO400LIGHT is waterproof and ready for any weather condition. This light is packed with features including a 6x zoom, soft-touch button and 5 light modes (high, medium, low, defensive strobe & beacon).

400 LUMENS



STEALTH LIGHT
Rear glow in the dark button



TRY ME Pack Size
(H) 205 x (W) 110 x (D) 100mm

5 LIGHT MODES

- HIGH - 400 Lumens, 2.5 hours, 180 metres
- MEDIUM - 160 Lumens, 6.5 hours, 120 metres
- LOW - 45 Lumens, 30 hours, 65 metres
- S.O.S - 400 Lumens 120 hours, 180 metres
- STROBE - 400 Lumens, 120 hours, 180 metres

DESIGN

- Powerful 400 lumens of white LED light
- 5 light modes
- Aluminium body
- Signature RED RING™
- Glow-in-the-dark reflector for low light
- Waterproof up to 1 metre deep (IPX7)
- Lanyard included
- Powered by 3 AAA (included)

SPECIFICATIONS

- Weight with batteries - 173g
- Length - 115mm
- Diametre - 34mm (Head) 12mm (Barrel)

CODE	DESCRIPTION
IP6545	iPROTEC PRO400LIGHT

PRO200LIGHT



The PRO200LIGHT offers 200 lumens of high intensity light and can throw a spectacularly bright beam over 228 metres. The PRO200LIGHT is waterproof and ready for any weather condition. This light is packed with features including a 6x zoom, glow-in-the-dark reflector and 2 light modes (high and low).

200 LUMENS



STEALTH LIGHT
Rear glow in the dark button



TRY ME Pack Size
(H) 305 x (W) 110 x (D) 100mm

2 LIGHT MODES

- HIGH 200 Lumens, 9 hours, 228 metres
- LOW 100 Lumens - 18 hours, 156 metres

DESIGN

- Powerful 200 lumens of white LED light
- 2 light modes
- Aluminium body
- Waterproof up to 1 metre deep (IPX7)
- Glow-in-the-dark reflector for low light
- Signature RED RING™
- Lanyard included
- Powered by 2 AA (included)

SPECIFICATIONS


- Weight with batteries - 206g
- Length - 150mm
- Diametre - 31mm (Head) 20mm (Barrel)

CODE	DESCRIPTION
IP6544	iPROTEC PRO200LIGHT

iPROTEC™ TWYST


SHAPING LIGHT LIKE NEVER BEFORE

A light that does it all...with a TWYST™! The TWYST features a high-power work light, lantern and flashlight all in one! The TWYST uses a revolutionary new C•O•B LED technology that allows the shaping of light into full 3D patterns, giving optimal, bright, uniform light exactly where it's needed. Retractable base stabilisers are positioned at the bottom of the flashlight to give added stability on uneven surfaces. A powerful magnetic base also provides convenient hands-free lighting. TWYST...shaping light like never before!




3 LIGHT MODES

- C•O•B Work Light (110 lumens) - 13.5 hours / 15 metres
- C•O•B Lantern (250 lumens) - 4 hours / 15 metres
- Flashlight (3400 LUX) - 4 hours / 233 m



LIGHT

- 110 Lumen Work Light
- 250 Lumen Lantern
- 270 Lumen LED Flashlight



DESIGN

- Enhanced C•O•B LED Technology
- Tactical edge
- Fully dimmable beam
- Anodised aircraft-grade aluminium
- Water and impact-resistant
- Retractable base stabilizers
- Powerful magnetic base

OPERATION

- Side-positioned ON/OFF button



BATTERIES

- Powered by 4 AA batteries (included)

SPECIFICATIONS

- Weight with batteries - 385g
- Length - 190mm (Compacted) 200mm (Extended)
- Diametre - 50.8mm (Head) 31mm (Barrel)




Display Box Size
(H) 250 x (W) 110 x (D) 60mm



CODE	DESCRIPTION
IP6301	iPROTEC TWYST


iPROTEC™ TWYST²

The TWYSTZ200 is shaping light like never before. 3 light modes - flashlight, work light and lantern; all can be used hands free using the magnetic base. A simple twist of the flashlight reveals a work light and lantern. Adjustable zoom and dimmable beam. Powered by 4 x AAA Batteries (included).


3 LIGHT MODES

- Flashlight (200 lumens) - 2 hours / 110 m
- Work Light (75 lumens) - 10 hours / 10 m
- Lantern (200 lumens) - 2 hours / 10 m



DESIGN

- 4x adjustable zoom
- ARCUS C•O•B LED Technology
- Tactical edge
- Fully dimmable beam
- Anodised aircraft-grade aluminium; water and impact-resistant
- Powerful magnetic base




OPERATION

- Side-positioned ON/OFF button

BATTERIES

- Powered by 4 AAA batteries (included)



SPECS

- Weight with batteries - 250g
- Length - 160mm (Compacted) 172mm (Extended)
- Diametre - 45mm (Head) 25mm (Barrel)



Pack Size
(H) 265 x (W) 112 x (D) 45mm



CODE	DESCRIPTION
IP6372	iPROTEC TWYSTZ200

NIGHTCOMMANDER

The NIGHT COMMANDER is a rugged 3-in-1 LED light featuring a 250 lumen flashlight, a bright 220 lumen C•O•B work light and an intense red light. It's unique design allows the light head to turn to a right angle with a simple twist - perfect for various working conditions. The magnetic base and steel clip provide convenient hands-free lighting.

5 LIGHT MODES

- Focused High 250 Lumens - 3.5 hours / 113 m
- Focused Low 45 Lumens - 15 hours / 51 m
- Work High 220 Lumens - 2.75 hours / 21 m
- Work Low 30 Lumens - 22 hours / 7 m
- RED 15 Lumens - 6.5 hours / 6 m

WORK LIGHT

LIGHT

- Dimmable white lights
- 220 Lumens C•O•B LED ring flood light
- 250 Lumens white LED focused light
- 15 Lumens red ring light for night vision

DESIGN

- Powerful hands-free magnetic base
- Rubberised grip
- Steel pocket / belt clip
- Anodised aircraft-grade Aluminium
- Water and impact-resistant design
- Powered by 4 AAA batteries (included)

SPECIFICATIONS

- Weight with batteries - 182g
- Length - 125mm Diametre - 41mm



FLOOD LIGHT



RED FLOOD LIGHT



90° swivel tilt with a simple twist



CODE	DESCRIPTION
IP6495	iPROTEC NIGHTCOMMANDER

PRODUO HEADLAMP

The PRO DUO Headlamp is an all-powerful, hands-free lighting solution. The push on/off button allows you to easily cycle through the FOUR light modes: one white LED spot light (250 lumens), C•O•B flood light (80 lumens), steady red and red beacon. The red LED is a low-signature light, which ensures stealth in the dark, enhances night vision and makes reading in little to no light possible. The light from the 250 lumen power LED has a spot beam distance of 122 metres. Its signature 2 strip C•O•B design fully illuminates your immediate area with its wide flood beam. The PRO DUO Headlamp is tough, reliable, lightweight and completely shock-proof.

4 LIGHT MODES

- Spot Light (250 lumens, Low 30) - 3.5 hours / 122 m
- C•O•B Flood Light (80 lumens, Low 8) - 7 hours / 13 m
- Red C•O•B (10 lumens, Low 2) - 8 hours / 4 m
- Red Beacon - 48 hours / visible over 1 mile

LIGHT

- Spot Light (250 lumens, Low 30) 3.5 hours / 122 metres
- C•O•B Flood Light (80 lumens, Low 8) 7 hours / 13 metres
- Red C•O•B (10 lumens, Low 2) 8 hours / 4 metres
- Red Beacon - 48 hours / visible over 1 mile

DESIGN

- Tough, lightweight, shock-proof
- Fully dimmable
- Programmable memory setting
- Direct to red light feature
- Water and impact resistant, durable housing

OPERATION

- Power/dimmer button
- 90° tilting headlamp
- Dual adjustable head straps

BATTERIES

- 3 AAA batteries included

SPECIFICATIONS

- 75g, 100g with strap
- Length: 60mm
- Width: 40mm
- Diametre: 49mm



SPOT LIGHT



FLOOD LIGHT



RED STEADY LIGHT



RED BEACON LIGHT



90° tilting head lamp



CODE	DESCRIPTION
IP6535	iPROTEC PRODUO HEADLAMP

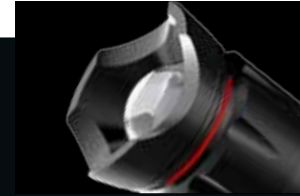
TRY ME Pack Size
(H) 205 x (W) 110 x (D) 100mm



TRY ME Pack Size
(H) 185 x (W) 120 x (D) 45mm

PRO250LIGHT

The PRO250LIGHT has a high-power LED that outputs 250 lumens of intense white light and it also features a 6x adjustable zoom that changes from floodlight to spotlight. The magnetic base and steel belt clip provide convenient hands-free lighting.



5 LIGHT MODES

- High 250 Lumens - 2.5 hours / 206 m
- Medium - 6.5 hours / 140 m
- Low - 20 hours / 87 m
- Strobe - 24 hours / 206 m
- S.O.S. - 24 hours / 206 m



LIGHT

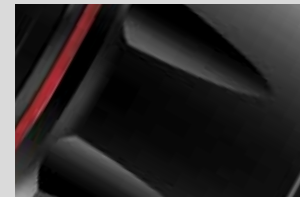
- High-power 250 Lumen LED

DESIGN

- Convex lens
- Anodised aircraft grade aluminium
- Water-resistant
- Compact body design
- Rear glow in the dark tactical button
- 6 X adjustable beam zoom
- Steel clip
- Impact resistant: 2 metres
- 3 Duracell AAA batteries (1 Set included)

SPECIFICATIONS

- Weight with batteries - 148g
- Length - 112mm (Compacted) 123mm (Extended)
- Diametre - 40mm (Head) 30mm (Barrel)



Eliminating inconsistencies in light, the OC™ - Optimised Clarity Technology provides intense, clear, pristine light that is easy on the eyes. This technology allows the light beam to be as bright on the edge as it is in the center when used in flood mode.



CODE	DESCRIPTION
IP6273	iPROTEC™ PRO250LIGHT

Pack Size
(H) 185 x (W) 120 x (D) 60mm

PRO320RC with MAGDOCK

The newest in the PROLIGHT series is the PRO320RC with MagDock. The MagDock is a magnetic charging station that docks and charges your flashlight. Small enough to fit in the palm of your hand, the PRO320RC with MagDock is fully equipped with all of the features that make the PROLIGHT series so popular.

RECHARGEABLE

4 LIGHT MODES

- High (320 lumens) - 1 hour / 110 m
- Medium (125 lumens) - 2 hours / 70 m
- Low (32 lumens) - 9 hours / 35 m
- Strobe (320 lumens) - 2 hours / 110 m



LIGHT

- High-power 320 lumen LED

DESIGN

- 4x adjustable zoom
- Anodised aircraft-grade Aluminium; water and impact-resistant
- OC™ Technology
- Convex lens
- Signature Red Ring™
- Steel belt/pocket clip
- Ergonomic non-slip grip
- Magnetic base
- Protective LED housing
- Charging indicator light



OPERATION

- Side-positioned, ON/OFF button

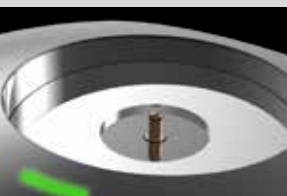
ACCESSORIES

- USB to Micro USB cable included
- Lanyard included



BATTERIES

- Internal, rechargeable lithium-ion battery (Recharge time - up to 2 hours)



SPECIFICATIONS

- Weight - 94g
- Length - 91mm (Compacted) 98mm (Extended)
- Diametre - 31mm (Head) 27mm (Barrel)



Eliminating inconsistencies in light, the OC™ - Optimised Clarity Technology provides intense, clear, pristine light that is easy on the eyes. This technology allows the light beam to be as bright on the edge as it is in the center when used in flood mode.



CODE	DESCRIPTION
IP6392	iPROTEC™ PRO320RC

Pack Size
(H) 185 x (W) 120 x (D) 60mm



PRODUALLIGHT

Combining the best that NEBO® has to offer, the PRODUALLIGHT features a powerful LED flashlight and C•O•B work light all in one. At first glance, this flashlight appears to be a simple and strong, emitting 250 lumens of intense white light... and it is! However, you will see the PRODUALLIGHT is much more. The body of the flashlight conceals a powerful 190 lumen work light. To reveal the C•O•B work light, just SLYDE to open!

2 LIGHT MODES

- 250 lumen flashlight, 2 hour, 220 m
- 190 lumen C•O•B work light, 3.5 runtime, 18 m

LIGHT

- High-power 250 lumen LED flashlight
- High-power 190 lumen C•O•B work light

DESIGN

- Anodised aircraft-grade aluminium
- Water and impact-resistant
- Work light is concealed inside the flashlight body; just SLYDE to reveal
- Powerful magnetic base

OPERATION

- Side-positioned ON/OFF button with Soft Touch Technology

BATTERIES

- Powered by 4 AAA batteries (included)

SPECIFICATIONS

- Weight with batteries - 305g
- Length - 167mm (Compacted) 230mm (Extended)
- Diametre - 42mm (Head) 33mm (Barrel)



Anodised Aircraft-Grade Aluminium



Extendable Body Reveals C•O•B LED



Powerful Magnetic Base



Pack Size
(H) 265 x (W) 113.03 x (D) 44mm



CODE	DESCRIPTION
IP6295	PRODUALLIGHT SLYDE

PRO800LIGHT

The PRO800LIGHT features a high power LED flashlight with a push-pull zoom feature like no other. At first glance, the PRO800LIGHT sports a powerful 800 lumens of intense white light... and it does!

3 LIGHT MODES

- High (800 lumens) - 8 hours / 240 m
- Low - 23 hours / 140m
- Strobe - 72 hours / 240m

LIGHT

- HIGH 800 Lumens - 8 hours, 240 metres
- LOW - 23 hours, 140 metres
- STROBE - 72 hours, 240 metres

DESIGN

- Convex Lens
- Heat sink design
- 6x adjustable beam
- Anodised aircraft-grade aluminium
- Water and impact-resistant
- Flex-Power™

OPERATION

- Rear-positioned button
- Glow-in-the-dark ON/OFF button

BATTERIES

- Powered by Flex-Power™:
- 3, 6 or 9AA batteries (9AA batteries included)

SPECIFICATIONS

- Weight with 9 batteries - 570g
- Weight with 6 batteries - 510g
- Weight with 3 batteries - 450g
- Length - 223mm (Compacted) 244mm (Extended)
- Diametre - 50mm (Head) 38mm (Barrel)
- Length - 91mm (Compacted) 98mm (Extended)
- Diametre - 30mm (Head) 27mm (Barrel)



6x Adjustable Zoom



Flex-Power™
3, 6 or 9 AA Batteries



Glow-in-the-Dark
ON/OFF Button

FLEX-POWER™

The PRO800LIGHT is fueled by FLEX-POWER™, technology that allows the flexibility to use different quantities of batteries to power the light. PRO800LIGHT will function with 3 AA, 6 AA or with the optimal 9 AA batteries for full 800 lumens of power.



OPTIMISED CLARITY

Eliminating inconsistencies in light, the OC™ - Optimised Clarity Technology provides intense, clear, pristine light that is easy on the eyes. This technology allows the light beam to be as bright on the edge as it is in the center when used in flood mode.

CODE	DESCRIPTION
IP6308	PRO800LIGHT

Pack Size
(H) 308 x (W) 110 x (D) 50mm



TASKLIGHT

The Task Light knows how to light up a room! Equipped with new C•O•B LED technology, the Task Light outputs 250 lumens of intense light. Secondary light modes include Low (95 lumens) and the Emergency Red Flash mode. This intense red light is perfect for distress signaling or roadside emergencies. The anodised aluminium body and recessed LED housing ensures that the Task Light can handle any situation. It's small size makes this flashlight extremely portable.



3 LIGHT MODES

- High (250 lumens) - 3 hours / 29 metres
- Low (95 lumens) - 10 hours / 17 metres
- Red Flash - 10 hours

LIGHT

- High-power 250 lumen C•O•B LED work light
- Low-power 95 lumen C•O•B LED work light
- High-power C•O•B LED emergency red flasher

DESIGN

- Anodised aircraft-grade aluminium
- Water and impact-resistant
- Powerful magnetic base
- Top positioned ON/OFF button
- Powered by 3 AAA batteries (included)

SPECIFICATIONS

- Weight with batteries - 89g
- Length - 151mm
- Diametre - 20mm (Head) 15mm (Barrel)



Pack Size
(H) 250 x (W) 110 x (D) 30mm

CODE	DESCRIPTION
IP6373	TASK LIGHT

CHAMELEON

The Chameleon™ has a high-power, colour-changing LED that outputs white, green and red light. Hard/Soft Touch Technology allows you to easily cycle through the four impressive light modes.

100 LUMENS

COLOUR-CHANGING
High-Power LED

STEEL
Belt/Pocket Clip

GLOW-IN-THE-DARK
Tactical Button

GREEN/RED
Mixture

Pack Dimensions
(H) 208x (W) 112 x (D) 50mm

- 4 LIGHT MODES**
- High-power colour-changing LED
 - WHITE - 100 Lumens, 4 hours, 80 metres
 - GREEN - 90 Lumens, 5 hours, 70 metres
 - RED - 85 Lumens, 7 hours, 50 metres
 - STROBE - 5 hours, 80 metres
- DESIGN**
- Anodised aircraft-grade aluminium
 - Water and impact-resistant
 - Convex lens
 - 4x adjustable zoom
 - Steel belt/pocket clip
- OPERATION**
- Rear-positioned ON/OFF button with Soft Touch Technology
- BATTERIES**
- 1 AA batteries included
- SPECIFICATIONS**
- Weight with batteries - 82g
 - Length - 101mm
 - Diametre - 25mm (Head) 19mm (Barrel)

CODE	DESCRIPTION
IP5905	IPROTEC CHAMELEON

PROLUMOLIGHT

Compact, handy and bright...the LUMO™ Clip Light is the perfect "whatever you need it to be" light. Key chain light, purse light, backpack light, book light...the possibilities are endless. This compact 25 lumen light comes with a carabiner attachment to clip anywhere you need. The white top of the LUMO™ is a diffuser dome. This dome helps spread the light evenly to create a more omnidirectional light source. LUMO™ Clip Light...the brilliant clip light!

25 LUMENS

CARABINER
Clip

ANODISED
Aircraft-Grade Aluminium

GLOW-IN-THE-DARK
ON/OFF Button

DIFFUSER DOME
Softens the Light

- LIGHT**
- High-power 25 lumen LED
- DESIGN**
- Anodised aircraft-grade aluminium
 - Water and impact-resistant
 - Carabiner clip
 - Glow-in-the-dark button
 - Diffuser dome
- OPERATION**
- Rear-positioned glow-in-the-dark ON/OFF button
- BATTERIES**
- Powered by 3 LR44 batteries (included)
- SPECIFICATIONS**
- Weight with batteries - 25g
 - Length - 50mm
 - Diametre - 19mm

CODE	DESCRIPTION
IP6095	LUMOLIGHT

Pack Dimensions
(H) 130 x (W) 90 x (D) 15mm

PRO280LIGHT

5 LIGHT MODES

- HIGH - 280 Lumens, 2 hours, 198 metres
- MEDIUM - 5 hours, 96 metres
- LOW - 12 hours, 37 metres
- S.O.S. - 60 hours, 198 metres
- STROBE - 60 hours, 198 metres

DESIGN

- Convex lens
- Anodised aircraft grade aluminium
- Water-resistant
- Compact body design
- Rear glow in the dark tactical button
- 4 X adjustable beam zoom, steel clip
- Impact resistant: 2 metres
- 3 Duracell AAA batteries (1 Set included)

SPECIFICATIONS

- Weight with batteries - 158g
- Length - 118mm (Compacted) 128mm (Extended)
- Diametre - 38mm

280 LUMENS



CODE	DESCRIPTION
IP5620	iPROTEC PRO280LIGHT

PRO220LIGHT

220 LUMENS



5 LIGHT MODES

- HIGH - 220 Lumens, 4 hours, 138 metres
- MEDIUM - 8 hours, 60 metres
- LOW - 15 hours, 27 metres
- S.O.S - 72 hours, 138 metres
- STROBE - 72 hours, 138 metres

DESIGN

- Anodised aircraft grade aluminium
- Water-resistant
- Compact body design
- Rear glow in the dark tactical button
- Convex lens
- 4 X adjustable beam
- Powerful magnetic base for hands-free lighting
- Impact resistant: 2 metres, steel clip
- 3 Duracell AAA batteries included

SPECIFICATIONS

- Weight with batteries - 133g
- Length - 110mm (Compacted) 116mm (Extended)
- Diametre - 34mm

CODE	DESCRIPTION
IP5929	iPROTEC PRO220LIGHT

PRO180LIGHT

2 LIGHT MODES

- HIGH - 180 Lumens, 2 hours, 115 metres
- STROBE - 6 hours, 115 metres

DESIGN

- Anodised aircraft grade aluminium
- Water-resistant
- Compact body design
- Rear glow-in-the-dark button
- Powerful magnetic base for hands-free lighting
- Convex lens
- 1 Duracell AA battery included

SPECIFICATIONS

- Weight - 82g
- Length - 100mm (Compacted) 106mm (Extended)
- Diametre - 27mm

180 LUMENS



CODE	DESCRIPTION
IP6079	iPROTEC PRO180LIGHT

PRO100LIGHT

100 LUMENS



2 LIGHT MODES

- STEADY ON - 100 Lumens, 2 hours, 80 metres
- STROBE - 4.5 hours, 80 metres

DESIGN

- Anodised aircraft grade aluminium
- Water-resistant
- Compact body design
- Removable chrome plated head, steel clip
- Rear glow-in-the-dark button - this button allows you to easily activate the light while maintaining constant control of the flashlight
- 1 Duracell AA battery included

SPECIFICATIONS

- Weight with batteries - 65g
- Length - 102mm
- Diametre - 23mm

CODE	DESCRIPTION
IP6078	iPROTEC PRO100LIGHT

NEBO®



www.nebotools.co.uk
sales@true-brands.co.uk
+44(0)1202 755392
True Brands Ltd
Unit 2, The GP Centre
Yeomans Road
Ringwood, BH24 3FF, UK