

Compression Connections

BURNDY®

Copper Compression – Code – Long Barrel – No Inspection Window

C-36

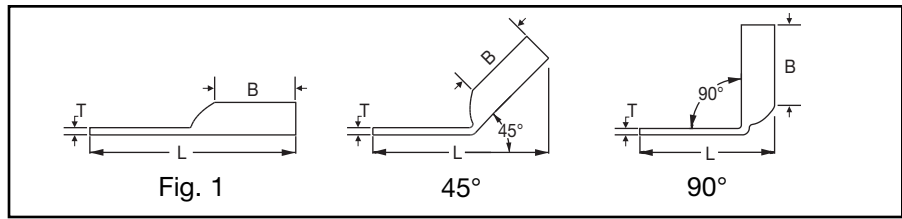
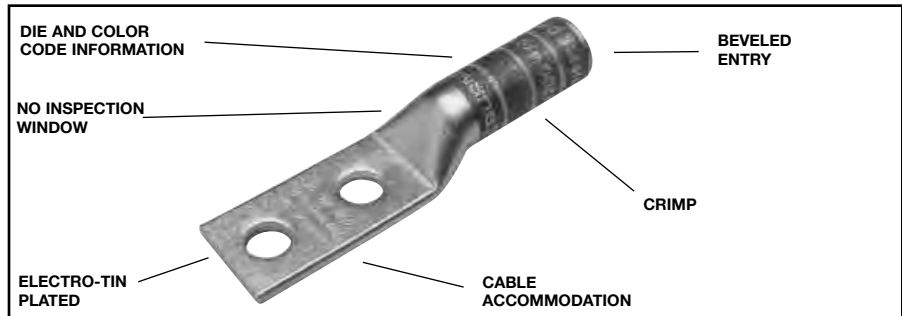
TWO HOLE HYLUG™ CODE CONDUCTOR LONG BARREL

TYPES YA-2N, YA-2TC, YA-4N

UL Listed 90° C,
600 Volts to 35 kV ◆

45° and 90° angles are available.

Please contact Customer Service to order:
1-800-346-4175



Catalog Number	Fig #	Conductor			Stud Hole Size	Stud Hole Spacing	Tongue Width	Figure Dimensions			Dieless (# of crimps)	▲ Installation Tooling					Wire Strip Length			
		AWG	MM²	†				(B)	(T)	(L)		Mechanical		Hydraulic		Color Code		Die Index		
												MD6, OUR840, MD7-34R	BCT500HS, Y500CTS	Y35, Y39, Y750, Y46*, PAT750						
YA8C2TC14	1	#8 Str. #6 Sol. 37/24	† 10	1/4"	5/8"	.40"	.81"	.08"	2.33"	Y8MRB-1 (2) MY29-3 (2) MY29-11 (2) MRC840 (2) Y81KFT (1) Y81KFTMBH (1) PAT81KFT-18V (1)	W8CVT (2) W8CRT (2) X8CRT (2)	W8CVT (2) W8CRT (2) X8CRT (2)	U8CRT (1)	Red	49	1"				
YA8C2TC14E2	1						1/4"	3/4"	.41"	.81"	.08"	2.45"								
YA8C2TC38	1						3/8"	1"	.73"	.81"	.06"	2.89"								
YA6C2N	1	#6 AWG	—	1/2"	1-3/4"	.81"	1.12"	.12"	4.40"	Y1MRTC (2) MY29-3 (2)	W5CVT (2) W5CRT (2) X5CRT (2) X8CART (2)	W5CVT (2) W5CRT (2) X5CRT (2) X8CART (2)	U5CRT (2) U8CABT (2)	Blue	7	1-3/16"				
YA6C2TC14	1						1/4"	5/8"	.45"	1.12"							.08"	2.65"	MY29-11 (2) MRC840 (2) Y81KFT (1) Y81KFTMBH (1) PAT81KFT-18V (1)	
YA6C2TC14E1	1						1/4"	1"	.45"	1.12"							.08"	3.03"		
YA6C2TC14E2	1						1/4"	3/4"	.45"	1.12"							.08"	2.78"		
YA6C2TC38	1						3/8"	1"	.63"	1.12"							.06"	3.22"		
YA6C2TC38E2	1						3/8"	3/4"	.63"	1.12"							.06"	2.97"		
YA6C2TC38E6	1						3/8"	7/8"	.63"	1.12"							.06"	3.09"		
YA5C2N	1	#5 AWG	—	1/2"	1-3/4"	.83"	1.12"	.12"	4.43"	MY29-3 (2) MY29-1 (2) MRC840 (2) Y644HS (1) Y81KFT (1) Y81KFTMBH (1) PAT81KFT-18V (1)	W5CRT (2) W5CVT (2) X5CRT (2)	X5CRT (2) X5CVT (2) W5CRT (2)	U5CRT (2)	Blue	7	1-3/16"				
YA4C2N	1	#4 AWG	—	1/2"	1-3/4"	.81"	1.12"	.12"	4.45"	Y1MRTC (4) MY29-3 (2) MY29-11 (2) MRC840 (2) Y644HS (1) Y81KFT (1) Y81KFTMBH (1) PAT81KFT-18V (1)	W4CVT (2) W4CRT (2) X4CRT (2)	W4CVT (2) W4CRT (2) X4CRT (2)	U4CRT (2) U6CABT (2)	Gray	8	1-3/16"				
YA4C2TC14	1						1/4"	5/8"	.50"								1.12"	.09"	2.70"	
YA4C2TC14E2	1						1/4"	3/4"	.50"								1.12"	.09"	2.83"	
YA4C2TC38	1						3/8"	1"	.56"								1.12"	.08"	3.26"	
YA3C2N	1						1/2"	1-3/4"	.81"								1.25"	.12"	4.62"	
YA3C2TC14	1	#3 Str.	25	1/4"	5/8"	.55"	1.25"	.09"	2.87"	W3CRT (2)	W3CRT (2)	U3CRT (2)	White	9	1-5/16"					
YA3C2TC14E2	1	#3 AWG					1/4"	3/4"	.55"							1.25"	.09"	2.99"		
YA3C2TC38	1	#2 Sol.					3/8"	1"	.58"							1.25"	.08"	3.43"		
YA3C2TC38E2	1	3/8"					3/4"	.58"	1.25"							.08"	3.18"			

▲ See tooling section of this catalog for complete tool and die listings.

* Use PUADP-1 adaptor with U -dies in Y46 HYPRESS™.

** P-RT die sets for use in Y46 HYPRESS™ only, PUADP-1 adaptor not required.

*** The MM² conductor sizes listed are the recommendations for Class 2 conductor.

† The MM² conductor size listed here is for Class 2 and Class 5 conductor.

Available undrilled. Add suffix U to catalog number (example: YA25U).

◆ For applications greater than 2000 Volts consult cable manufacturer for voltage stress relief instructions.

Note: All dimensions shown are for reference only.

Blue highlighted items are industry standard and most frequently ordered.