



## Juno® Trac-Lites™ Line Voltage Spotlights

A variety of line voltage spotlights suitable for various applications

**Juno®**



R711



R712



R713



R714

## Juno® Line Voltage Spotlights PAR16/MR16 GU10

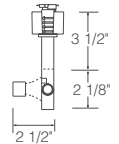
### R711 Open Back Spotlight



120V, 35-50W PAR16/MR16 GU10

Aiming lock helps retain fixture position during relamping.

**Finishes:** White (WH), Black (BL)



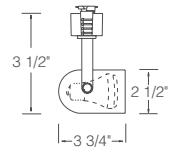
### R712 Round Back Cylinder



120V, 35-50W PAR16/MR16 GU10

With black bezel.

**Finishes:** White (WH), Black (BL)



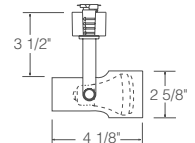
### R713 Step Cylinder



120V, 35-50W PAR16/MR16 GU10

With black bezel.

**Finishes:** White (WH), Black (BL)



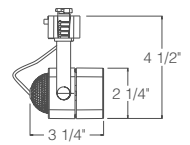
### R714 Cast Cube



120V, 35-50W PAR16/MR16 GU10

Aiming locks help retain fixture position during relamping.

**Finishes:** White (WH), Black (BL),  
Satin Chrome (SC), Painted Bronze (BZ)





R715



R716



R717



R718

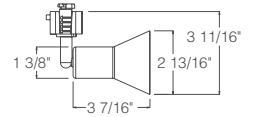
## Juno® Line Voltage Spotlights PAR16/MR16 GU10

**R715  
Flare**



120V, 35-50W PAR16/MR16 GU10

**Finishes:** White (WH), Black (BL),  
Satin Chrome (SC), Painted Bronze (BZ)

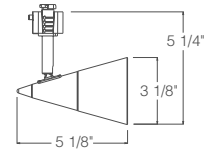


**R716  
Glass Cone**



120V, 35-50W PAR16/MR16 GU10

**Finishes:** White (WH) with Opal Frost glass,  
Black (BL) with Opal Frost glass, Satin  
Chrome (SC) with Opal Frost glass, Painted  
Bronze (BZ) with Amber Frost glass

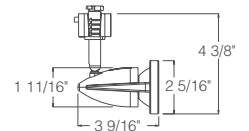


**R717  
Odyssey**



120V, 35-50W PAR16/MR16 GU10

**Finishes:** White (WH), Black (BL),  
Satin Chrome (SC), Painted Bronze (BZ)



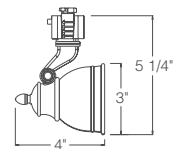
**R718  
Bell**



120V, 35-50W PAR16/MR16 GU10

Integral baffle and deep lamp regression  
for optimal lamp shielding. Aiming locks  
help retain fixture position during relamping.

**Finishes:** White (WH), Black (BL), Satin  
Chrome (SC), Hand-Rubbed Bronze (BZ)



All Trac-Lites™ line voltage fixtures feature an on/off switch and are also compatible with Juno Trac-Master™ single and two-circuit trac systems.

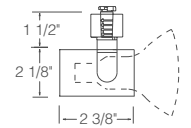


**Juno® Line Voltage Spotlights** Universal, Flared Gimbals and Flared Steps

**R541  
Universal**



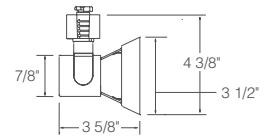
35-50W PAR20/35-75W PAR30  
**Finishes:** White (WH), Black (BL)



**R531  
Flared Gimbal**



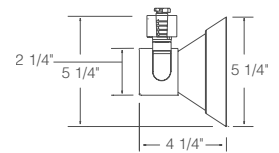
35-50W PAR20  
**Finishes:** White (WH), Black (BL),  
Satin Chrome (SC) with Black yoke  
and adapter, Painted Bronze (BZ)



**R532  
Flared Gimbal**



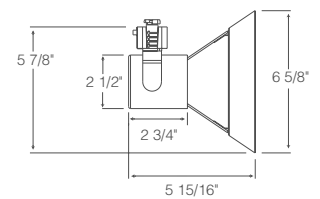
35-75W PAR30  
**Finishes:** White (WH), Black (BL),  
Satin Chrome (SC) with Black yoke  
and adapter, Painted Bronze (BZ)



**R530  
Flared Gimbal**



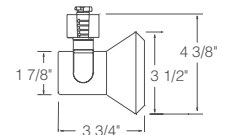
45-120W PAR38  
**Finishes:** White (WH), Black (BL),  
Satin Chrome (SC) with Silver yoke  
and adapter, Painted Bronze (BZ)



**R551  
Flared Step**



35-50W PAR20  
**Finishes:** White (WH), Black (BL),  
Satin Chrome (SC) with Black yoke  
and adapter, Painted Bronze (BZ)



All Trac-Lites™ line voltage fixtures feature an on/off switch and are also compatible with Juno Trac-Master™ single and two-circuit trac systems.

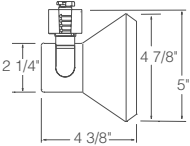


**Juno® Line Voltage Spotlights** Universal, Flared Gimbals and Flared Steps

**R552  
Flared Step**



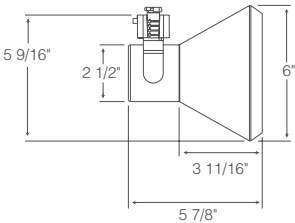
35-75W PAR30  
**Finishes:** White (WH), Black (BL),  
 Satin Chrome (SC) with Black yoke  
 and adapter, Painted Bronze (BZ)

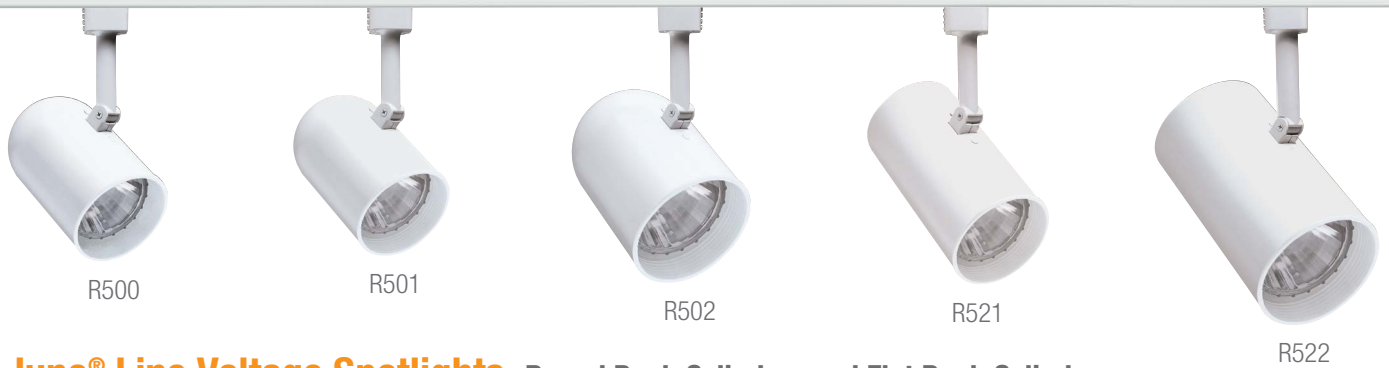


**R550  
Flared Step**



45-120W PAR38  
**Finishes:** White (WH), Black (BL),  
 Satin Chrome (SC) with Silver yoke  
 and adapter, Painted Bronze (BZ)





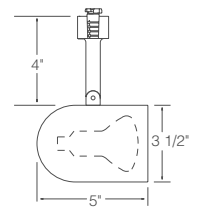
**Juno® Line Voltage Spotlights Round Back Cylinders and Flat Back Cylinders**

**R500  
Round Back  
Cylinder**



30-50W R20/35-50W PAR20  
Without baffle

**Finishes:** White (WH), Black (BL)



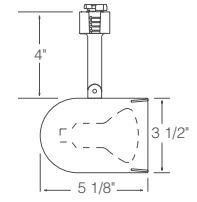
**R501  
Round Back  
Cylinder**



30-50W R20/35-50W PAR20  
R501B – With black baffle

**Finishes:** White (WH), Black (BL),  
Polished Brass (PB), Painted Bronze (BZ)

R501W – With white baffle  
**Finish:** White (WH)



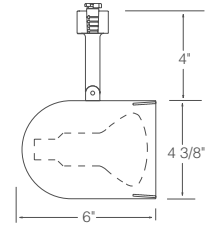
**R502  
Round Back  
Cylinder**



45-65W BR30/35-75W PAR30/PAR30L  
(Short neck PAR30 requires  
T599 Socket Extender).

R502B – With black baffle  
**Finishes:** White (WH), Black (BL)  
Painted Bronze (BZ)

R502W – With white baffle  
**Finish:** White (WH)

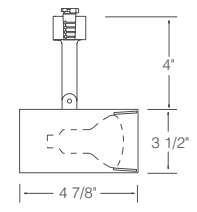


**R521W  
Flat Back  
Cylinder**



30-50W R20/35-50W PAR20  
With white baffle

**Finish:** White (WH)



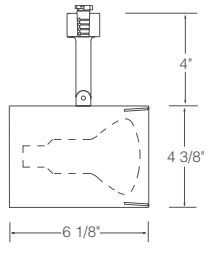
**R522W  
Flat Back  
Cylinder**



45-65W BR30/35-75W  
PAR30/PAR30L  
(Short neck PAR30 requires  
T599 Socket Extender).

With white baffle

**Finish:** White (WH)





R510



R511



R512



R533



R534

## Juno® Line Voltage Spotlights Step Cylinders and Open Backs

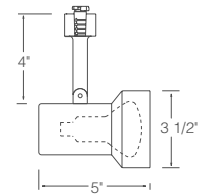
### R510 Step Cylinder



30-50W R20/35-50W PAR20

Without baffle

**Finishes:** White (WH), Black (BL)



### R511 Step Cylinder



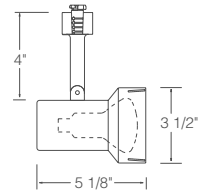
30-50W R20/35-50W PAR20

R511B – With black baffle

**Finishes:** White (WH), Black (BL), Polished Brass (PB)

R511W – With white baffle

**Finish:** White (WH)



### R512 Step Cylinder



45-65W BR30/35-75W PAR30/PAR30L

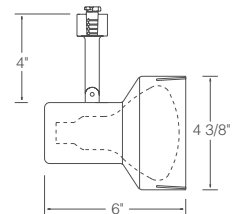
(Short neck PAR30 requires T599 Socket Extender).

R512B – With black baffle

**Finishes:** White (WH), Black (BL)

R512W – With white baffle

**Finish:** White (WH)

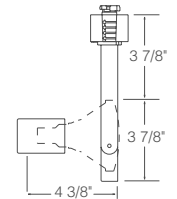


### R533 Open Back Spotlight



35-75W PAR30

**Finishes:** White (WH), Black (BL)

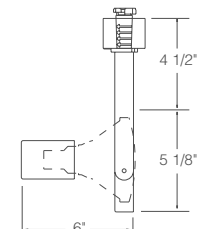


### R534 Open Back Spotlight



45-120W PAR38

**Finishes:** White (WH), Black (BL)



All Trac-Lites™ line voltage fixtures feature an on/off switch and are also compatible with Juno Trac-Master™ single and two-circuit trac systems.



## Juno<sup>®</sup> Trac-Lites<sup>™</sup>

Juno Trac-Lites bring you all the style, quality and lighting performance Juno is famous for at affordable prices that can be tailored to any budget.

Juno Trac-Lites offer a total system, featuring a wide assortment of low voltage and line voltage track fixtures, decorative pendants, system components and track kits. Track fixtures are available in all the popular classics and in exciting contemporary designs, from metal and glass cones to barn doors, rockets, and cubes.

For added versatility, all Trac-Lites fixtures are compatible with Juno Trac-Master<sup>™</sup> Trac systems and all Juno Trac-Master fixtures may be used on Trac-Lites Trac systems.



The perfect blend of form, function and value, Juno Trac-Lites is the system of choice for illuminating many of today's most stylish interiors. No matter what your application, you are sure to find the solutions you need at prices you can afford.



©2017 Acuity Brands Lighting, Inc. The marks appearing in this catalog are trademarks of Acuity Brands Lighting, Inc. Products shown in this brochure may be covered by U.S. and international patents and patents pending. Specifications subject to change without notice. Printed in the U.S.A.