

# Type CH Space-Maker Conduit Hubs For RMC and IMC

NEC/CEC — Suitable for use in:  
Class I, Division 2

## Applications

- General purpose, suitable for use with heavy wall cabinets.

## Features

- Female bushed nipple type.
- Female thread for rigid conduit and IMC.
- Takes less space.
- Recessed O-ring seal outside the box provides a watertight threaded hub on enclosures.
- Suitable for use with service entrance conduit.

## Material/Finish

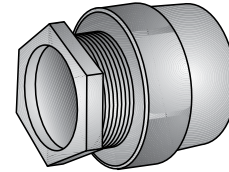
- Malleable iron/zinc electroplate
- Gasket: neoprene

## Options

- For additional corrosion protection, specify Mechanically Galvanized. Contact your local representative for pricing and availability

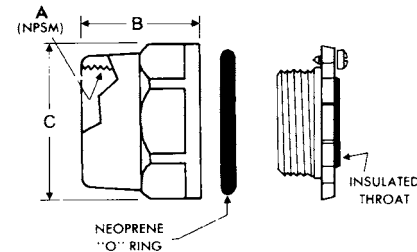
## NEC/CEC Certifications and Compliances

- UL Standard: 514B
- UL Listed: E-14814
- CSA Standard: C22.2 No. 18.3
- CSA Certified: 065178
- NEMA: FB-1



Type CH

## Illustrated Dimensions



Trade Size (Inches)	Dimensions in Millimeters (Inches)			Max. Box Wall Thick.	Catalog Number	Insulated Throat Catalog Number
	B	C	A Female Tapered NPSM			
1/2	28.7 (1.13)	31.8 (1.25)	12.7 (0.50) - 355.6 (14.00)	4.1 (0.16)	CH-50	CH-50T
3/4	31.8 (1.25)	41.4 (1.63)	19.1 (0.75) - 355.6 (14.00)	7.1 (0.28)	CH-75	CH-75T
1	35.1 (1.38)	44.5 (1.75)	25.4 (1.00) - 292.1 (11.50)	7.9 (0.31)	CH-100	CH-100T
1-1/4	44.5 (1.75)	57.2 (2.25)	31.8 (1.25) - 292.1 (11.50)	11.9 (0.47)	CH-125	CH-125T
1-1/2	47.8 (1.88)	63.5 (2.50)	38.1 (1.50) - 292.1 (11.50)	12.7 (0.50)	CH-150	CH-150T
2	44.5 (1.75)	79.5 (3.13)	50.8 (2.00) - 292.1 (11.50)	16.8 (0.66)	CH-200	CH-200T
2-1/2	63.5 (2.50)	95.3 (3.75)	63.5 (2.50) - 203.2 (8.00)	16.8 (0.66)	CH-250	CH-250T
3	92.2 (3.63)	111.3 (4.38)	76.2 (3.00) - 203.2 (8.00)	18.3 (0.72)	CH-300	CH-300T
3 -/2	69.9 (2.75)	127.0 (5.00)	88.9 (3.50) - 203.2 (8.00)	20.5 (0.81)	CH-350	CH-350T
4	69.9 (2.75)	139.7 (5.50)	101.6 (4.00) - 203.2 (8.00)	16.0 (0.63)	CH-400	CH-400T
5	69.9 (2.75)	174.8 (6.88)	127.0 (5.00) - 203.2 (8.00)	16.0 (0.63)	CH-500	CH-500T
6	69.9 (2.75)	196.9 (7.75)	152.4 (6.00) - 203.2 (8.00)	23.9 (0.94)	CH-600	CH-600T

# Type CHM Raintight Conduit Hubs

## For RMC and IMC

NEC/CEC — Suitable for use in:  
Class I, Division 2

### Applications

- General purpose fitting.

### Features

- Type CHM only table and references.

### Material/Finish

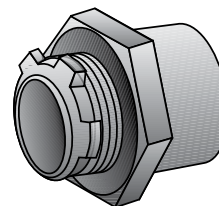
- Malleable iron/zinc electroplate
- Gasket: neoprene

### Options

- P/U for OZG

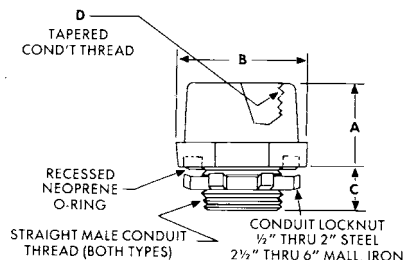
### NEC/CEC Certifications and Compliances

- UL Standard: 514B
- UL Listed: E-14814
- CSA Standard: C22.2 No. 18.3
- CSA Certified: 065178
- NEMA: FB-1



Type CHM

### Illustrated Dimensions



### Dimensions in Millimeters (Inches)

Trade Size (Inches)	Dimensions in Millimeters (Inches)			D Female Tapered N.P.T.	Max. Box Wall Thk.	Catalog Number	Insulated Throat Catalog Number
	A	B	C				
1/2	22.4 (0.88)	38.1 (1.5)	12.7 (0.50)	12.7 (0.50) - 355.6 (14.00)	7.9 (0.31)	CHM-50	CHM-50T
3/4	25.4 (1.00)	44.5 (1.75)	12.7 (0.50)	19.1 (0.75) - 355.6 (14.00)	9.7 (0.38)	CHM-75	CHM-75T
1	28.7 (1.13)	50.8 (2.00)	16.0 (0.63)	25.4 (1.00) - 292.1 (11.50)	11.2 (0.44)	CHM-100	CHM-100T
1-1/4	31.8 (1.25)	60.5 (2.38)	16.0 (0.63)	31.8 (1.25) - 292.1 (11.50)	11.9 (0.47)	CHM-125	CHM-125T
1-1/2	31.8 (1.25)	69.9 (2.75)	16.0 (0.63)	38.1 (1.50) - 292.1 (11.50)	11.9 (0.47)	CHM-150	CHM-150T
2	31.8 (1.25)	82.6 (3.25)	19.1 (0.75)	50.8 (2.00) - 292.1 (11.50)	12.7 (0.5)	CHM-200	CHM-200T
2-1/2	41.4 (1.63)	98.6 (3.88)	25.4 (1.00)	63.5 (2.50) - 203.2 (8.00)	14.2 (0.56)	CHM-250	CHM-250T
3	44.5 (1.75)	117.6 (4.63)	25.4 (1.00)	76.2 (3.00) - 203.2 (8.00)	16.0 (0.63)	CHM-300	CHM-300T
3-1/2	47.8 (1.88)	130.3 (5.13)	28.7 (1.13)	88.9 (3.50) - 203.2 (8.00)	16.0 (0.63)	CHM-350	CHM-350T
4	47.8 (1.88)	143.0 (5.63)	28.7 (1.13)	101.6 (4.00) - 203.2 (8.00)	17.5 (0.69)	CHM-400	CHM-400T
5	54.1 (2.13)	174.8 (6.88)	31.8 (1.25)	127.0 (5.00) - 203.2 (8.00)	17.5 (0.69)	CHM-500	CHM-500T
6	54.1 (2.13)	206.5 (8.13)	31.8 (1.25)	152.4 (6.00) - 203.2 (8.00)	17.5 (0.69)	CHM-600	CHM-600T