

## Concealed Service Floor Boxes

### 663 Series Floor Box



663-SC

- Multiple service floor box that delivers power, communications and data from standard conduit with no exposed service fitting
- Result: Open office planning flexibility
- Ideal for workstations that require power, communications and data service
- Stamped steel, concrete-tight, semi-adjustable
- Electro-galvanized body and hardware
- Shipped complete with expendable cap to prevent ingress of concrete
- Blank- and duplex-face plates can be mounted at either end of the box
- Does not include duplex faceplate; faceplate is included with P-62-CP and P-60-3B cover plates
- Use P-62 and P-60 Series covers\*

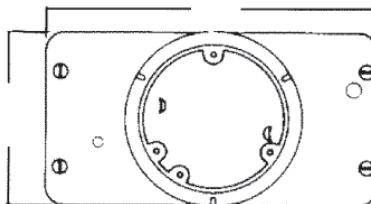
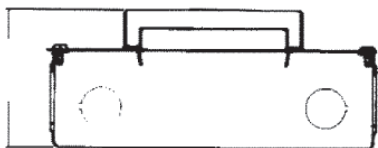
### Engineering Data — 663 Series



Cat. No.	Dimensions (in.)			Before Pour Adj. (in.)	After Pour Adj. (in.)	Maximum Capacity (cu. in.)	Covers and carpet Plates	Maximum Conduit KO's (in.)		Wiring Device	Std. Ctn.
	A	B	C					Sides	Bottom		
663-SC	3-5/8	4-11/16	8-13/16	None	3/4	25 per Gang 90 Total	P-62 Series P-60 Series	(2) 1-1/4 (3) 3/4	None	Duplex and/or Data/Voice	4

\*P-62-TAR is required when using P-60 Series covers

Caution: to abandon 663 you must use a P-60 Series brass cover plate



### Faces Plates for 663 Floor Box



Cat. No.	Description	Std. Ctn.
P-60-Q	Duplex receptacle plate for 663 floor box	4
P-60-QB	Blank plate for 663 floor box	

## Concealed Service Floor Boxes

### Covers, Carpet Plates and Adjusting Rings for 663 Floor Box



P-60-3B



P-60-CP



P-62-TAR

- Polished brass finish
- Furnished complete with 8-32 x 1 in. brass screws
- P-62-TAR is required when used on 663 floor box
- 5-11/16 in. outside diameter

- Polished brass finish with nonmetallic bronze insert.
- Plastic insert has one 7/8 in. cut-out and two 1/2 in. cut-outs.
- Furnished complete with sealing gasket, 8-32 x 7/16 in. brass screws and one P-60-Q device plates.
- Split cover sections have access notch for screwdriver lift.



Cat. No.	Description	Finish	Std. Ctn.
P-60-3B* <sup>1</sup>	Cover Plate – Includes 1 - P-60-Q	Brass	4
P-60-CP	Carpet plate	Polished Brass	
P-60-CP-AL		Aluminum	
P-62-TAR	Flange and adjusting ring for 663	Polished Brass	
P-62-TAR-AL*		Aluminum	

\* Not CSA Certified

• For use as cover only when box in service

<sup>1</sup> When not in use replace P-60-3B Cover Plate with 697 Plug

**Caution: These covers are not to be used in high traffic areas**



P-62-CP-BRN

- High strength polycarbonate
- Molded support ribs for extra strength
- Furnished with one 7/8 in. cut-out and two 1/2 in. cut-outs and P-60-Q device plate
- 5-5/8 in. outside diameter
- Furnished with 3-12-24 x 1 in. screws



Cat. No.	Description	Colour	Std. Ctn.
P-62-CP-AS* <sup>2</sup>	Polycarbonate cover and carpet plate – Includes 1 - P-60-Q	Charcoal	4
P-62-CP-BRN* <sup>2*</sup>		Brown	
P-62-CP-G* <sup>2*</sup>		Gold	

\* Not CSA Certified

• For use as cover only when box in service

<sup>2</sup> When not in use the P62CP Series cover should be replaced by P60CP, P60 and P62 Series covers

**Caution: These covers are not to be used in high traffic areas**

## Recessed Service Floor Boxes

### 664 Series Floor Box

#### Multiple-Service Floor Boxes for Power, Communications and Data

Multiple-service floor boxes deliver power, communications and data from standard conduit with no exposed service fittings. Result: Open office planning flexibility. Ideal for the modern office with workstations that have power, communications and data equipment.

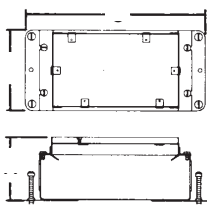
Power receptacles and low-voltage connections can be enclosed underfloor in either steel or cast-iron bodies. Galvanized 14-gauge steel boxes are provided with knockouts from 3/4 in. to 1-1/4 in. Cast-iron bodies have threaded openings for 3/4 in. and 1 in. conduit.



- Two-compartment boxes are available in three types: stamped steel (664-SC), shallow (664-S) and cast iron (664-CI)
- Durable nonmetallic covers include a steel reinforcement plate for added strength
- New! Metallic covers in solid brass and aluminum provide aesthetics and durability
- Four leveling screws enable quick leveling to desired **concrete** depth
- Cover flange self-levels with the finished floor for easy installation

Cat. No.	Description	Std. Ctn.
<b>664-SC</b>	Stamped-Steel Box which Accepts Two Plates, One Duplex Plate Provided	4
<b>664-CI</b>	Cast-Iron Box which Accepts Two Plates, One Duplex Plate Provided	
<b>664-S</b>	Shallow Stamped-Steel Box which Accepts Two Plates, One Duplex Plate Provided	

When ordering a 664 Series box, the cover must be ordered separately, see page C50  
For communications accessories, see page C85



664-CI



664-SC



664-S

### Engineering Data — 664 Series

Cat. No.	Dimensions (in.)			Before Pour Adj. (in.)	After Pour Adj. (in.)	Maximum Capacity (cu. in.)	Standard Conduit Tapping	Maximum Conduit Tapping (in.)		Conduit KOS		Covers
	A	B	C					W/Bushing	W/O Bushing	Sides	Bottom	
<b>664-SC</b>	3-3/4	4-11/16	10-1/4	2-1/2	3/4	24 per gang 90 total	—	—	—	(4) 1in. – 1-1/4 in. (4) 3/4	None	664-CST Series
<b>664-CI</b>	3-3/4	5-3/32	9-15/16	2-1/2	3/4	24 per gang 90 total	(4) 3/4 in. (4) 1 in.	1	1-1/2	—	—	664-CST Series
<b>664-S</b>	2-7/8	4-11/18	10-1/4	1-1/2	3/4	16.5 per gang 70 total	—	—	—	(6) 3/4 in.	None	664-CST Series

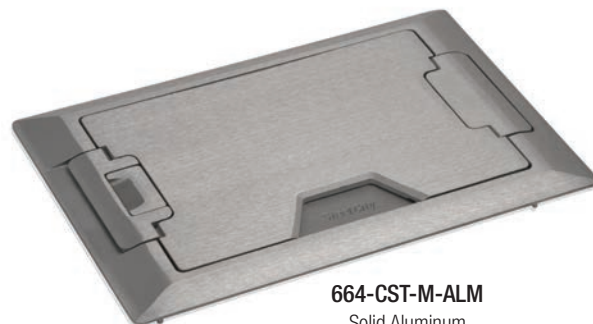
Caution: When using the center side KOs, Catalogue Number 664-RP must be assembled to the box prior to installing the conduit

## Recessed Service Floor Boxes

### Metallic Covers for 664 Series Floor Boxes



**664-CST-M-BRS**  
Solid Brass



**664-CST-M-ALM**  
Solid Aluminum



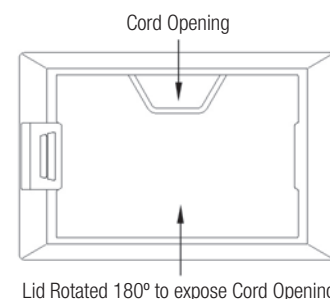
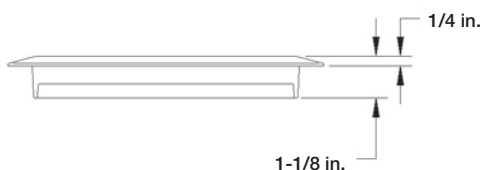
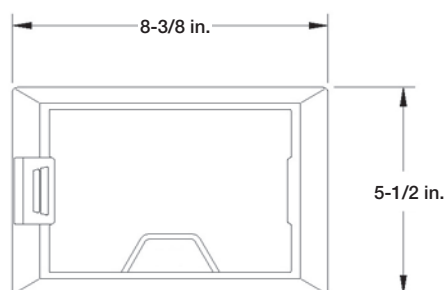
**664-CI**  
Cast Iron for Slab or Grade Applications



**664-S**  
For Shallow Concrete Applications



**664-SC**  
Stamped Steel for General Purpose



Lid Rotated 180° to expose Cord Opening.

MopTite™ Covers meet UL scrub-water exclusion requirements for carpet, tile and wood

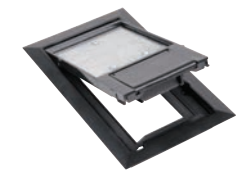


Cat. No.	Finish	Load Rating (lb.)	Std. Ctn.
<b>664-CST-M-BRS</b>	Solid Brass	2,250	1
<b>664-CST-M-ALM</b>	Solid Aluminum	2,250	1

## Recessed Service Floor Boxes

### Nonmetallic Covers for 664 Series Floor Boxes

- Duplex receptacle face plate for 664 Series floor box for additional power service
- Does not include duplex



664-CST-SW-BLK



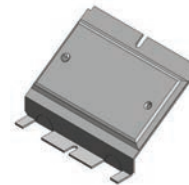
664-CST-SW-BRN



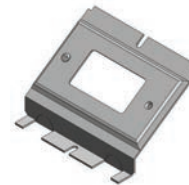
664-CST-SW-BGE



664-CST-SW-GRY



664-BP



664-GP



664-RP



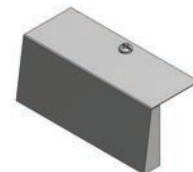
Cat. No.	Description	Std. Ctn.
664-BP	Blank Plate	4
664-GP	GFCI Receptacle Plate	
664-RP	Duplex Receptacle Plate	

Caution: When using the center side KO's, all 664 plates must be assembled to the box prior to installing the conduit

### Device Plates – 664-S



664-S-RP



664-S-BP



Cat. No.	Description	Std. Ctn.
664-S-RP	Duplex Receptacle Plate	4
664-S-BP	Blank Plate	

### Wire Tunnel for 664 Series

- Wire tunnel for protecting electrical connections between the two duplex receptacles when the box is used for power/power application



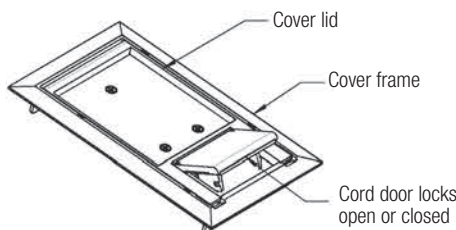
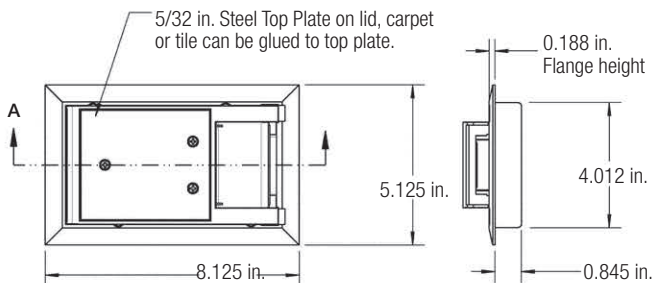
664-WT



664-S-WT



Cat. No.	For Use With	Std. Ctn.
664-WT	664 and 664-CI Floor Boxes	4
664-S-WT	664-S Floor Box	4



MopTite™ covers meet UL scrub-water exclusion requirements for carpet, tile and wood



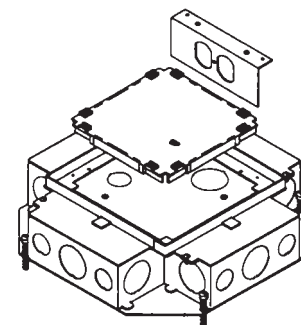
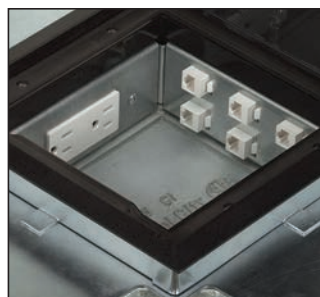
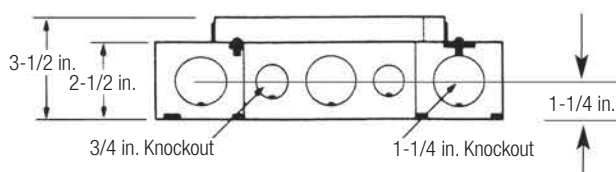
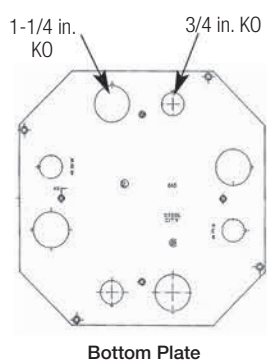
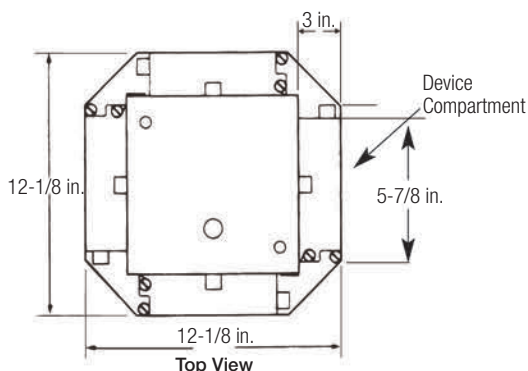
Cat. No.	Colour	Load Rating (lb.)	Std. Ctn.
664-CST-SW-GRY	Grey	1,500	1
664-CST-SW-BRN	Brown	1,500	1
664-CST-SW-BGE	Beige	1,500	1
664-CST-SW-BLK	Black	1,500	1

Material: Polycarbonate with 5/32 in. steel plate  
(see page C49 for metallic cover options)



## Recessed Service Floor Boxes

### 665 Series Floor Boxes: 665SC



- **For concrete application**
- The 665 line is an extension of the industry-leading 664 Series; our concealed service line now allows the customer to install up to four device panels in one box
- Through the use of a unique nonmetallic wire tunnel, the installer can easily partition the power, voice/data requirements
- Four (4) device compartments can accommodate any combination of devices. For example: (3) duplex power devices and (1) duplex telephone device, or (2) voice and data connectors and (1) GFCI device and (1) blank, etc.
- Overall height of 3-1/2 in. allows for shallow pours when needed
- High-Strength polycarbonate cover with a 5/32 in. steel plate assures structural integrity
- Metallic Covers also available in solid brass and aluminum
- Four-side feed-through allows installer to feed through power or data/com service from any orientation
- Nonmetallic wire tunnels aesthetically clean. Full-width tunnel provides maximum feed-through capacity; nonmetallic material prevents conductor damage
- Total access area of 126 cu. in. allows for friendly installation of workstation cables
- Contains 28 knockouts (16 – 1-1/4 in. and 12 – 3/4 in. KOs) that provide increased flexibility when installed
- This CSA Listed, stamped-steel floor box can be installed with Thomas & Betts voice and data connector products
- Four 2-1/2 in. levelling screws provided with all boxes
- Device panels ordered separately



Cat. No.	Device Compartments (in.)				Device Access Area	Std. Ctn.
	Length	Width	Height	Area		
<b>665-SC</b>	5-3/4	2-3/4	2-1/2	40 cu. in.	126 cu. in.	1

665-SC floor box does not include device plates or covers. Order separately  
Material: Pre-Galvanized Steel

## Recessed Service Floor Boxes

### 665 Series Floor Boxes: 665-CI

### Cast Iron for Slab-On-Grade Applications

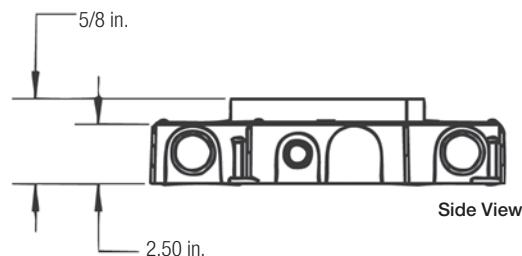
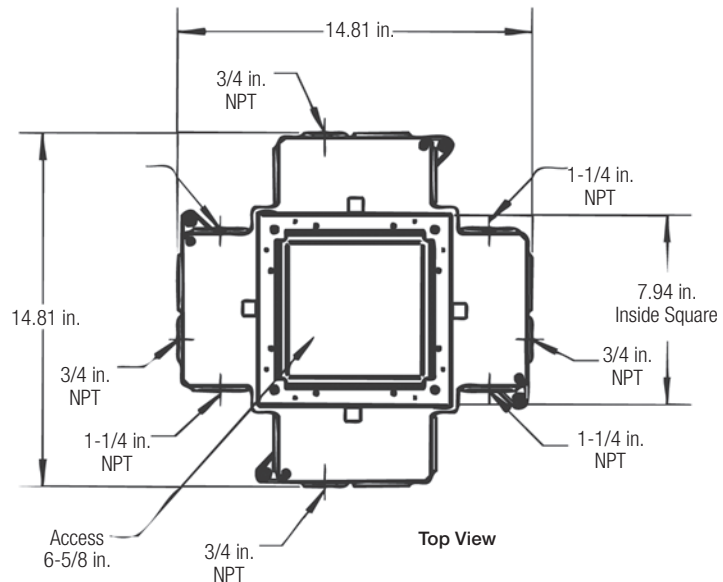
The new Steel City® 665 Cast Iron Floor Box provides a high-capacity power and data solution for ground-floor installations. This 4-gang recessed-service floor box is ideal for **concrete slab-on-grade applications**. Removable voltage dividers enable users to customize wiring configurations by feeding two or more adjacent compartments with a single conduit. Aesthetic covers feature a recess to accept floor covering to match the surrounding floor.



- 4-gang, recessed service for a high-capacity aesthetic floor-box solution
- Removable voltage dividers between compartments enable a single conduit to feed two or more adjacent compartments
- Heavy-duty, nonmetallic covers with steel reinforcement plates are available in a wide variety of colours to match any decor (black, grey, brown and beige)
- Metallic Covers.
- Separate cord door in the cover latches firmly in the open position to prevent damage to cables
- MopTite™ covers meet UL scrub-water exclusion requirements for carpet, tile and wood
- Largest cubic-inch capacity of any cast iron recessed 4-gang floor box
- Inline 1-1/4 in. hubs allow high-capacity straight runs for communication wiring

#### Specifications

- Material: Box – Cast Iron Cover – Polycarbonate with steel reinforcement plate
- Listing: CSA and UL Listed



Cat. No.	Device Compartments (in.)				Device Access Area	Std. Ctn.
	Length	Width	Height	Area		
665-CI	5-3/4	2-3/4	2-1/2	40 cu. in.	126 cu. in.	1

665-SC floor box does not include device plates or covers. Order separately

## Recessed Service Floor Boxes

### 665 Series Floor Boxes: 665-AV2



Decora® Adapters and Keystone Inserts for GFCI Device Plates. (Not included)

### 2 KOs for Audio Visual Applications

- For concrete application
- 2 KOs enable pre-terminated AV cables and connectors to be pulled directly through the conduit
- Accepts standard 665 Series covers and device plates for power, voice, data and audio visual connections
- Decora® style adapters allow voice, data and AV connectors to be mounted in a standard GFCI device plate
- Keystone style voice, data and AV connectors meet a wide range of low-voltage applications. All connectors are recessed for flush mounting in floor box applications.
- Device plates are available that accept Extron® MAAP plates to accommodate any AV requirements (Extron® MAAP plates purchased from an authorized Extron distributor)
- Metallic covers provide a durable, aesthetic installation, including industry-exclusive solid brass covers (not painted or plated, aluminum also available)



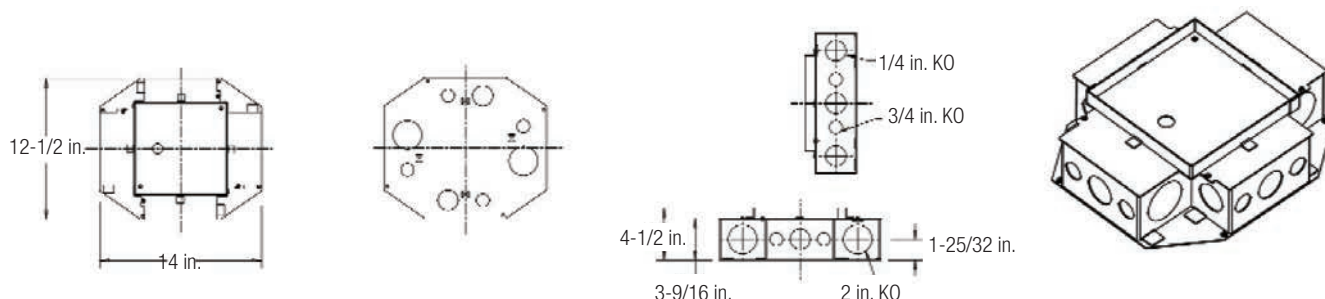
Cat. No.	Description	Std. Ctn.
665-AV2	4-Compartment Recessed Service Floor Box with 2 in. KOs for AV Applications	1

665-AV2 floor box does not include device plates or cover. Order separately. (see page C64)

Decora® is a registered trademark of Leviton Manufacturing Co., Inc.

Extron® is a registered trademark of RGB System, Inc.

For communication accessories, see page C85



### Engineering Data — 665-AV2

Cat. No.	Before Pour Adj. (in.)	After Pour Adj. (in.)	Compartment Size & Capacity (Qty. = 4)				Conduit KOs (in.)	
			Length (in.)	Width (in.)	Height (in.)	Volume	Sides	Bottom
665-AV2	2-1/2	3/4	5-3/4 5-3/4	3-3/4 2-3/4	3-3/8 3-3/8	72 cu. in. 52 cu. in.	(4) 2 (8) 1-1/4 (8) 3/4	(2) 2 (2) 1-1/4 (4) 3/4



Recessed Service Floor Boxes

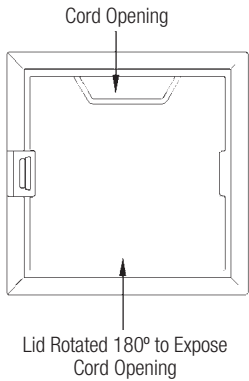
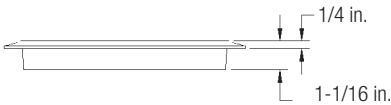
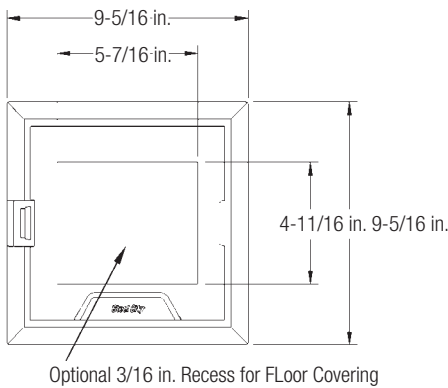
Metallic Covers for 665 Series Floor Boxes



665-CST-M-BRS  
Solid Brass



665-CST-M-ALM  
Solid Aluminum



Cat. No.	Description	Load Rating (lb.)	Std. Ctn.
665-CST-M-BRS	Solid Brass	1,500	1
665-CST-M-ALM	Solid Aluminum		

## Recessed Service Floor Boxes

### Nonmetallic Covers for 665 Series Floor Boxes



**665-CST-SW-BLK**  
Black Nonmetallic Cover



**665-CST-SW-GRY**  
Grey Nonmetallic Cover

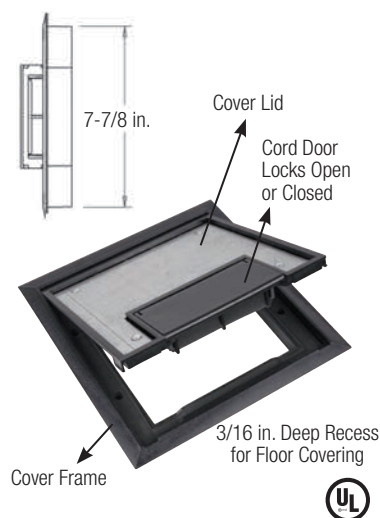
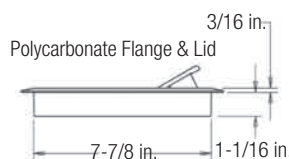
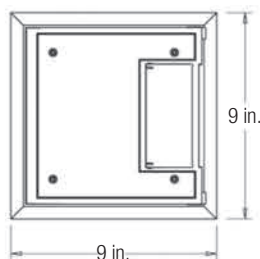


**665-CST-SW-BGE**  
Beige Nonmetallic Cover



**665-CST-SW-BRN**  
Brown Nonmetallic Cover

5/32 in. Steel Top Plate on Lid. Carpet or Tile can be glued to Top Plate



Cat. No.	Colour	Description	Std. Ctn.
<b>665-CST-SW-BLK</b>	Black	Nonmetallic Cover for 665 Series Floor Boxes	1
<b>665-CST-SW-GRY</b>	Grey		
<b>665-CST-SW-BGE</b>	Beige		
<b>665-CST-SW-BRN</b>	Brown		

Material: Polycarbonate with 5/32 in. steel plate  
Furnished with (4) #8-32 x 5/8 in. mounting screws

### Devices Plates and Accessories for 665 Series Floor Boxes



**665-RP**  
Duplex Plate



**665-GP**  
GFCI Plate



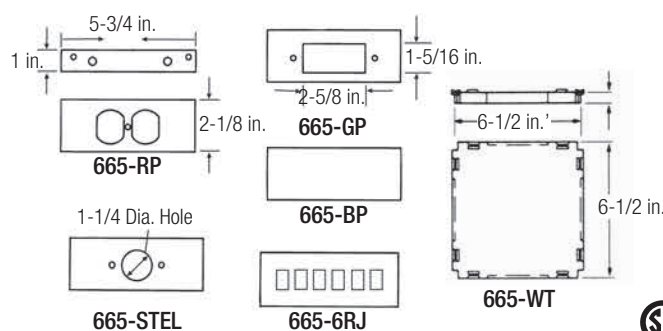
**665-BP**  
Blank Plate



**665-6RJ**  
Data Plate for 6  
Keystone Jacks



**665-WT**  
Wire Tunnel for 665-AV2 feeds multiple  
compartments from a single conduit  
(one included with each 665-AV2)

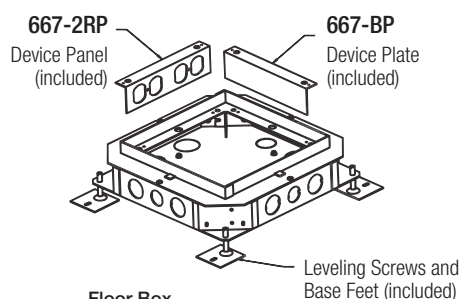
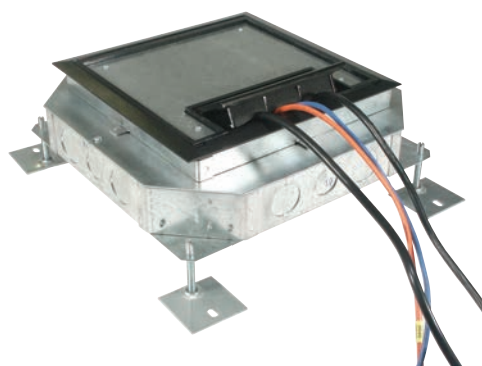


Cat. No.	Description	Std. Ctn.
<b>665-RP</b>	Duplex Plate for 665 Series	4
<b>665-GP</b>	GFCI Plate for 665 Series	
<b>665-BP</b>	Blank Plate for 665 Series	
<b>665-6RJ</b>	Data plate for 665 Series, Accepts 6 Keystone Jacks	
<b>665-WT</b>	Replacement Wire Tunnel for 665-SC & 665-AV2	
<b>665-STEL*</b>	Telephone/data Plate for 665	

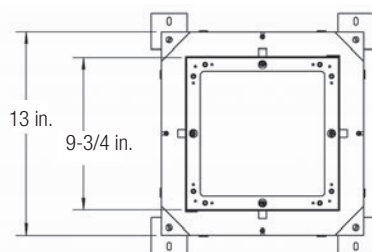
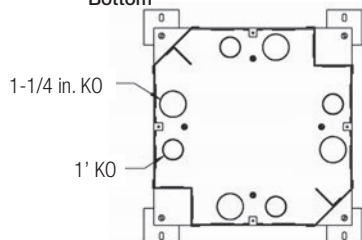
\*Not CSA applicable  
Each box requires (4) device plates. Material: Pre-galvanized steel.

## Recessed Service Floor Boxes

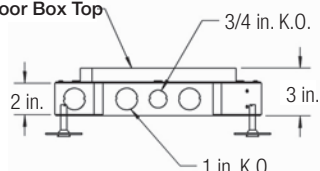
### 667-SC Floor Box



Floor Box Bottom



Floor Box Top



- **For concrete application**
- Largest capacity concealed-service floor box on the market.
  - Four “double-gangs” allow for two duplex receptacles per gang, for a total of eight receptacles per box
  - Each gang has 40 cu. in. of capacity
  - Box interior has 128 cu. in. of capacity
- Standard box configuration is for up to eight power and/or low-voltage devices
  - Box design allows for feed-through cabling for power and low-voltage conductors
- Shallow design
  - 3 in. overall height is ideal for renovations and upper level floor installations
- Full line of low-profile covers
  - Utilizes same quality cover as AFM-8 Access Floor Module
  - High-strength polycarbonate
  - Steel reinforced for added durability
  - Two receptacle cable exit ports
  - 64 sq. in. opening provides easy access to device panels
  - 1/4 in. recess for carpet/tile insert
  - Available in grey, black, brown and beige
- Box is manufactured with (1) 3/4 in., (3) 1 in. and (1) 1-1/4 in. KOs per gang.– This includes a 1 in. and 1-1/4 KO located in the bottom
- Full complement of device panels
  - Device panels available with one or two duplex openings, one or two GFCI openings, six standard “keystone” with Omni 110 bezels and blanks
- Provided with leveling legs and base feet
  - Base feet can be attached to form preventing box movement during concrete pour.
  - Leveling legs provide up to 1-1/2 in. pre-pour adjustment
- Manufactured from 14-gauge pre-galvanized steel
  - Quality construction provides added durability and rust protection
- MopTite™ covers meet UL scrub-water exclusion requirements for carpet, tile and wood

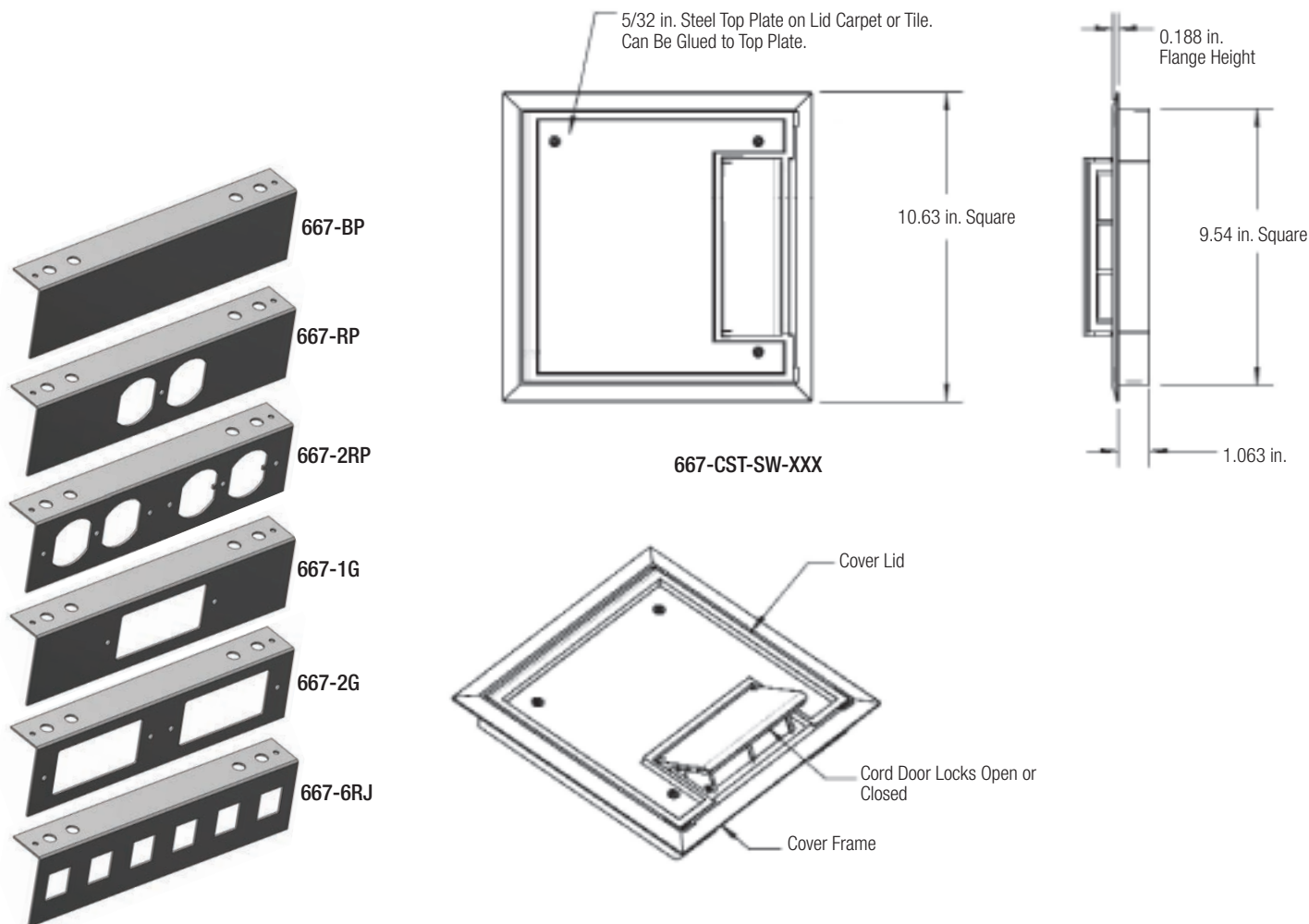


Cat. No.	Description	Std. Ctn.
667-SC	Four-Gang Recessed Floor Box	4

Supplied with (1) 667-2RP for 2 duplex receptacles and (1) 667-BP Blank Plate. For covers and other device plates, see page C57. For communications accessories, see page C85

## Recessed Service Floor Boxes

### 667-SC Floor Box



Cat. No.	Description	Std. Ctn.
667-BP*	Blank Device Panel	4
667-RP*	Single Duplex Receptacle Plate	
667-2RP*	Device Panel for 2 Duplex Receptacles with Duplex KOs	
667-1G	Device Panel for 1 GFCI Receptacle	
667-2G	Device Panel for 2 GFCI Receptacles	
667-6RJ**	Device Panel for 6 Keystone Data Jacks	
667-CST-SW-GRY*	Cover and Flange – Grey	
667-CST-SW-BLK*	Cover and Flange – Black	
667-CST-SW-BRN*	Cover and Flange – Brown	
667-CST-SW-BGE*	Cover and Flange – Beige	

\* Not CSA Certified

\*\* For data connectors and adapters, see pages C89 – C90

New MopTite™ Covers exceed UL scrub-water exclusion requirements

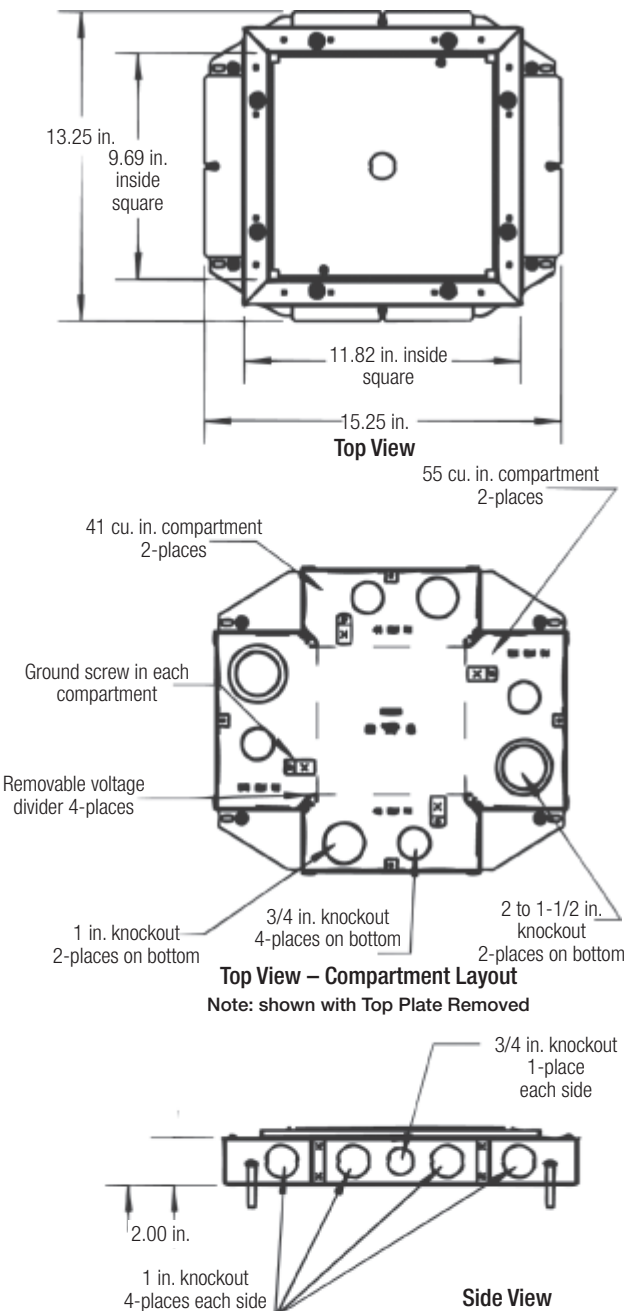
## Recessed Service Floor Boxes

### 668-S Ultra-Shallow Floor Box



The 668-S Ultra-Shallow Floor Box from Thomas & Betts provides a high-capacity power and data solution for shallow **concrete floors**. The low-profile 4-gang box is constructed of galvanized stamped steel. Removable voltage dividers enable users to customize wiring configurations by feeding two or more adjacent compartments with a single conduit. Metallic covers with durable powder-coat finish are designed to match any decor, while optional edge trims enable covers to be mounted completely flush with the floor in tile or wood floor applications.

- Low profile (2-1/2 in. height) for shallow concrete pours
- 4-gang, recessed service for a high-capacity, aesthetic floor box solution
- Stamped-steel box construction
- Removable voltage dividers between compartments enable a single conduit to feed two or more adjacent compartments
- Metallic covers feature durable powder-coat paint to match any decor (black, grey, brown and beige)
- Heavy-duty cord door in the cover latches firmly in the open position to prevent damage to cables
- Optional tile trim enables flush mounting for tile and wood floor applications
- MopTite™ covers meet UL scrub-water exclusion requirements for carpet, tile and wood
- Largest cubic-inch capacity of any shallow, recessed 4-gang floor box
- Additional KOs (up to 2 in.) on the bottom of the box enable installation flexibility
- Custom device panels are available – contact your Regional Sales Office about these offerings



### Specifications

- Material: Box – Galvanized Steel Cover – Die-Cast Zinc
- Listing: CSA and UL Listed



Cat. No.	Description	Std. Ctn.
668-S	Shallow, concealed service Floor Boxes	4

For covers and other device plates, see page C69  
For communications accessories, see page C85



## Recessed Service Floor Boxes

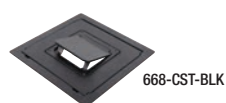
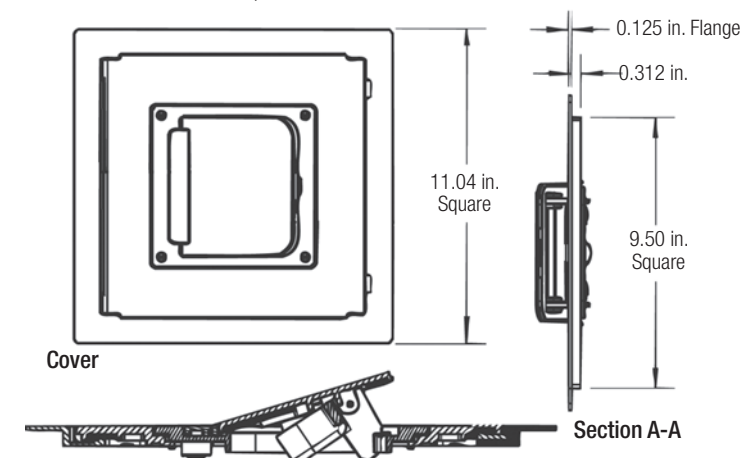
### Covers & Tile Trims for 668-S Floor Box



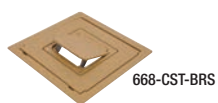
Standard mounting configuration: Flange on cover overlaps carpet, tile or wood floors.



Flush mounting configuration. Optional trim ring allows cover to be mounted flush with tile or wood floors.



668-CST-BLK



668-CST-BRS



668-TRIM-ALM



668-TRIM-BGE



668-TRIM-BLK



668-TRIM-BRS



Cat. No.	Description	Std. Ctn.
<a href="#">668-CST-ALM</a>	Metal Cover – Aluminum Powder Coat	1
<a href="#">668-CST-BRS</a>	Metal Cover – Brass Powder Coat	
<a href="#">668-CST-BLK</a>	Metal Cover – Black Powder Coat	
<a href="#">668-CST-BRN</a>	Metal Cover – Brown Powder Coat	
<a href="#">668-CST-BGE</a>	Metal Cover – Beige Powder Coat	

Cat. No.	Description	Std. Ctn.
<a href="#">668-TRIM-ALM</a>	Edge Trim – Aluminum Powder Coat	4
<a href="#">668-TRIM-BRS</a>	Edge Trim – Brass Powder Coat	
<a href="#">668-TRIM-BLK</a>	Edge Trim – Black Powder Coat	
<a href="#">668-TRIM-BRN</a>	Edge Trim – Brown Powder Coat	
<a href="#">668-TRIM-BGE</a>	Edge Trim – Beige Powder Coat	

CSA non applicable

### Device Plates for 668-S Floor Box



668-S-1RP



668-S-1G



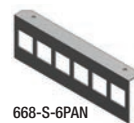
668-S-BP



Cat. No.	Description	Std. Ctn.
<a href="#">668-S-1RP</a>	Single-Gang Duplex Plate	1
<a href="#">668-S-1G</a>	Single-Gang GFCI Plate	
<a href="#">668-S-BP</a>	Blank Plate	



668-S-6RJ



668-S-6PAN



668-S-6ORT



668-S-6AVA



Cat. No.	Description	Std. Ctn.
<a href="#">668-S-6RJ</a>	Data Plate – 6 Keystone Jacks	1
<a href="#">668-S-6PAN</a>	Data Plate – 6 Panduit® Jacks	
<a href="#">668-S-6ORT</a>	Data Plate – 6 Ortonics® Jacks	4
<a href="#">668-S-6AVA</a>	Data Plate – 6 Avaya® Jacks	

CSA non applicable