

SIGN HERO
LED SIGN TUBES

**NO EXTERNAL DRIVER
FOR THE FASTEST
LED UPGRADE.**

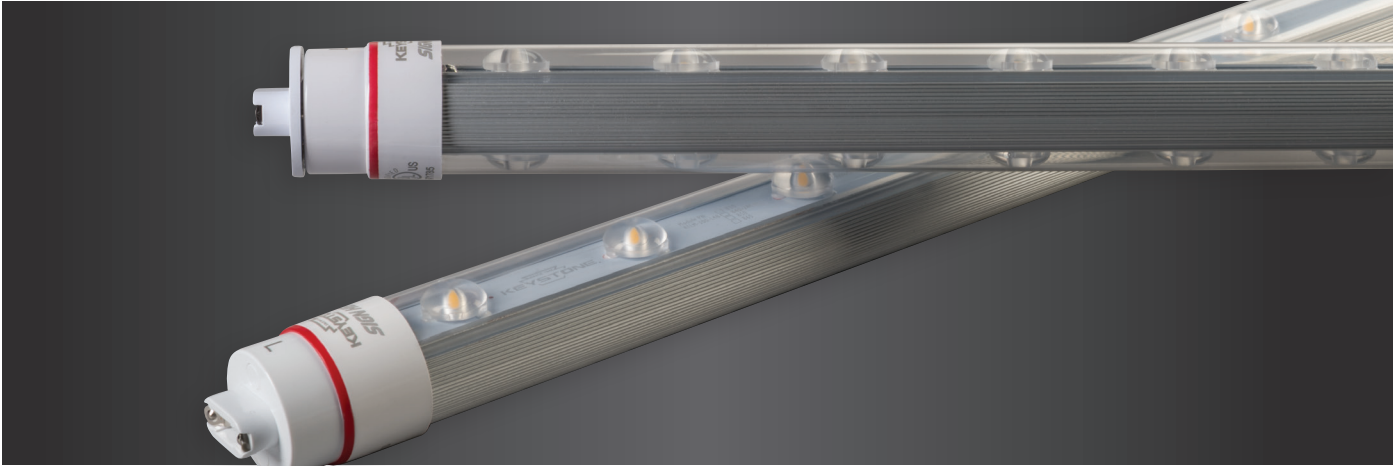
SINCE 1945
KEYSTONE
LIGHT MADE EASY

SIGN HERO
LED SIGN TUBES

FEB 2019

SIGN HERO

LED SIGN TUBES



NO EXTERNAL DRIVER REQUIRED
Bypass the ballast

Available in a wide range of lengths from 18" to 120"



SAM

5 YEAR WARRANTY

50,000 HOUR LIFETIME

Keystone's LED Sign Tubes: The Fastest LED Installation

UL Classified: LED Sign Retrofit, Evaluated to UL 48 / UL 879A Standards • Listed in the UL SAM Manual

SIGN HERO 360 ENERGY SAVINGS*

540W
(6) F96T12HO

VS

252W
(6) SIGN HERO LED

SIGN HERO 180 ENERGY SAVINGS*

540W
(6) F96T12HO

VS

126W
(6) SIGN HERO LED

*Standard 6-lamp, 8' sign with magnetic ballast

Why your customers will love it

Quick and easy installation

Our DirectDrive technology eliminates the need for an external driver or ballast while still using the existing sockets. This saves time and hassle for field technicians.

Consistent lighting

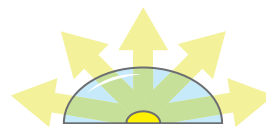
We've added optical lenses to cover each individual LED chip in the tube, which eliminates hot spots and ensures consistent light distribution.

Flexible for your needs

We've provided a rotatable R17D end cap that swivels, ensuring that the tube can be adjusted to provide a light beam in any direction.

Built to last

Count on Keystone for a tube with a 50,000 hour lifetime and a 5 year warranty. Heavy duty aluminum heatsink ensures LEDs run cooler for longer. Plastic and aluminum construction ensures less breakage.



Wide light distribution = No shadowing
No hotspots



**ROTATABLE
CASE
R17D**

Available for All Size Sign Cabinets

For easy replacement, Sign Hero is available in all of the same lamp lengths as T8HO and T12HO fluorescent lamps

NEW! **SIGN HERO 180**

SINGLE-SIDED LED SIGN TUBE

Keystone's single-sided sign tube can be used for retrofits or new installations.

Catalog Number	Nominal Length	CRI	Wattage	Socket Type	Total Lumens	Efficacy
KT-LED4T8-18P1S-8xx-D	18"	>80	4W	R17d	480	120 lm/W
KT-LED5T8-24P1S-8xx-D	24"	>80	5W	R17d	600	120 lm/W
KT-LED7T8-30P1S-8xx-D	30"	>80	7W	R17d	840	120 lm/W
KT-LED8T8-36P1S-8xx-D	36"	>80	8W	R17d	1,000	125 lm/W
KT-LED9T8-42P1S-8xx-D	42"	>80	9W	R17d	1,125	125 lm/W
KT-LED11T8-48P1S-8xx-D	48"	>80	11W	R17d	1,340	122 lm/W
KT-LED13T8-60P1S-8xx-D	60"	>80	13W	R17d	1,625	125 lm/W
KT-LED14T8-64P1S-8xx-D	64"	>80	14W	R17d	1,725	123 lm/W
KT-LED16T8-72P1S-8xx-D	72"	>80	16W	R17d	2,000	125 lm/W
KT-LED19T8-84P1S-8xx-D	84"	>80	19W	R17d	2,350	124 lm/W
KT-LED21T8-96P1S-8xx-D	96"	>80	21W	R17d	2,650	126 lm/W
KT-LED24T8-108P1S-8xx-D	108"	>80	24W	R17d	2,900	120 lm/W
KT-LED25T8-117P1S-8xx-D	117"	>80	25W	R17d	3,100	124 lm/W
KT-LED26T8-120P1S-8xx-D	120"	>80	26W	R17d	3,200	123 lm/W



SIGN HERO 360

DOUBLE-SIDED LED SIGN TUBE



Keystone's double-sided sign tube can be used for retrofits and new installations, as well as single- or double-sided signs.

Catalog Number	Nominal Length	CRI	Wattage	Socket Type	Total Lumens	Efficacy	Lumens Per Side	Lumens/Ft, Per Side
KT-LED7T8-18P2S-8xx-D	18"	>80	7W	R17d	900	129 lm/W	450	300
KT-LED10T8-24P2S-8xx-D	24"	>80	10W	R17d	1,200	120 lm/W	600	300
KT-LED13T8-30P2S-8xx-D	30"	>80	13W	R17d	1,600	123 lm/W	800	320
KT-LED16T8-36P2S-8xx-D	36"	>80	16W	R17d	2,000	125 lm/W	1,000	333
KT-LED18T8-42P2S-8xx-D	42"	>80	18W	R17d	2,250	125 lm/W	1,125	321
KT-LED21T8-48P2S-8xx-D	48"	>80	21W	R17d	2,600	124 lm/W	1,300	325
KT-LED26T8-60P2S-8xx-D	60"	>80	26W	R17d	3,250	125 lm/W	1,625	325
KT-LED28T8-64P2S-8xx-D	64"	>80	28W	R17d	3,450	123 lm/W	1,725	325
KT-LED31T8-72P2S-8xx-D	72"	>80	31W	R17d	4,000	129 lm/W	2,000	333
KT-LED37T8-84P2S-8xx-D	84"	>80	37W	R17d	4,700	127 lm/W	2,350	336
KT-LED42T8-96P2S-8xx-D	96"	>80	42W	R17d	5,300	126 lm/W	2,650	331
KT-LED47T8-108P2S-8xx-D	108"	>80	47W	R17d	5,800	123 lm/W	2,900	322
KT-LED50T8-117P2S-8xx-D	117"	>80	50W	R17d	6,200	124 lm/W	3,100	318
KT-LED52T8-120P2S-8xx-D	120"	>80	52W	R17d	6,400	123 lm/W	3,200	320

* 8xx denotes several color temperatures available:

840 800 Series, 4000K **865** 800 Series, 6500K

ACCESSORIES (SOLD SEPARATELY)

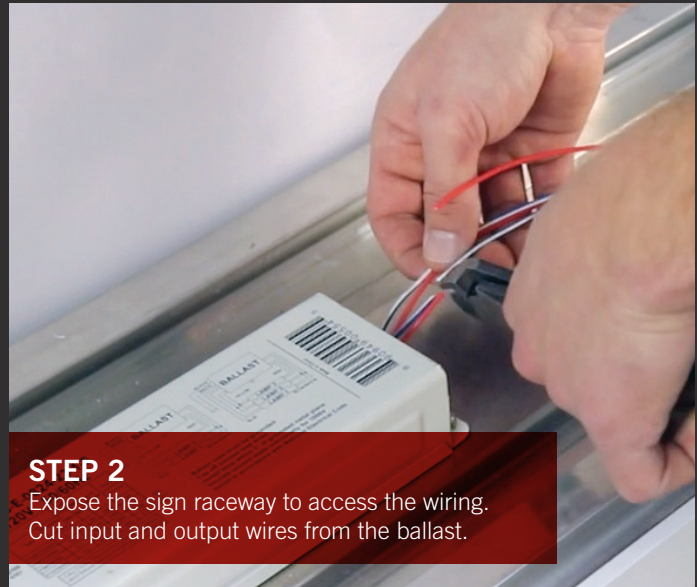
Catalog Number	Description
KTSP-10KV	External surge protector; input voltage: 120-277V; maximum peak current: 10kV; IP65 Rated
KT-SH-4L-CABLE-KIT	Cable mounting accessory for Sign Hero LED lamps; 1-4 lamp applications; designed to prevent lamp sagging for horizontal applications over 8' long; includes options for mounting via magnets or tek screws
KT-SH-6L-CABLE-KIT	Cable mounting accessory for Sign Hero LED lamps; 1-6 lamp applications; designed to prevent lamp sagging for horizontal applications over 8' long; includes options for mounting via magnets or tek screws

Bypass the ballast for the fastest installation.



STEP 1

Turn off the power at the breaker and remove the existing fluorescent lamps.

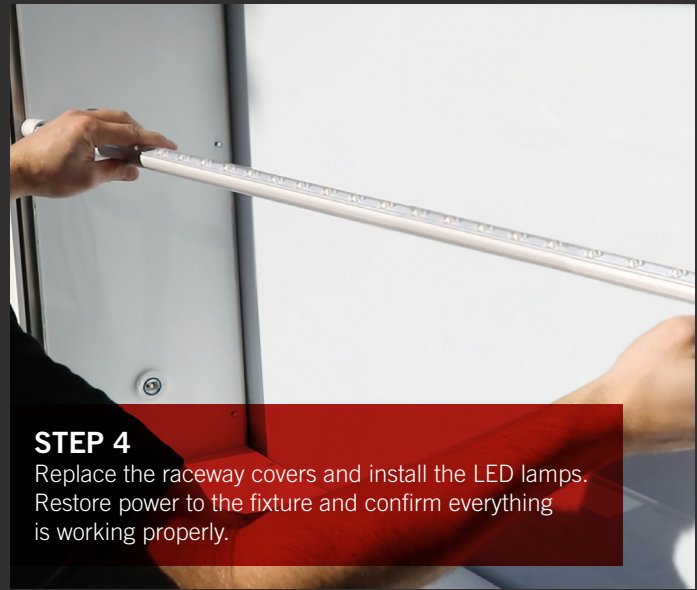
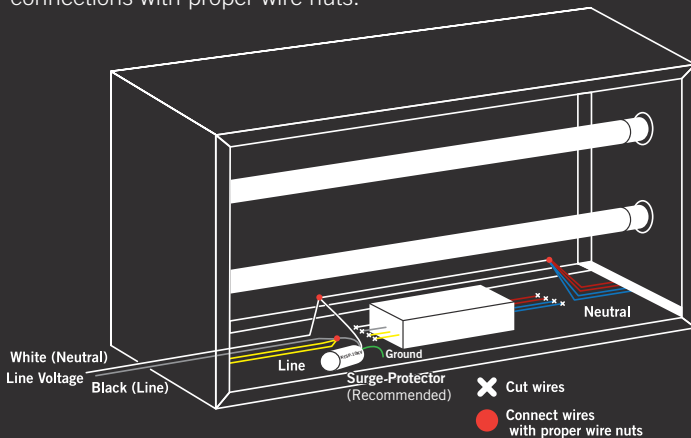


STEP 2

Expose the sign raceway to access the wiring. Cut input and output wires from the ballast.

STEP 3

Take the wires coming from one side of the sign and connect to the line wire coming in from the power source. Then connect all of the wires from the other side of the sign to the neutral wire. Make all connections with proper wire nuts.



STEP 4

Replace the raceway covers and install the LED lamps. Restore power to the fixture and confirm everything is working properly.

Watch our installation video at: keystonetech.com/video



Seeing is believing!

Countertop displays are available to help you increase sales.

For a **FREE SAMPLE**, call **800-464-2680** or email SignHero@keystonetech.com.

Some restrictions apply. Learn more at: keystonetech.com/SignHero

