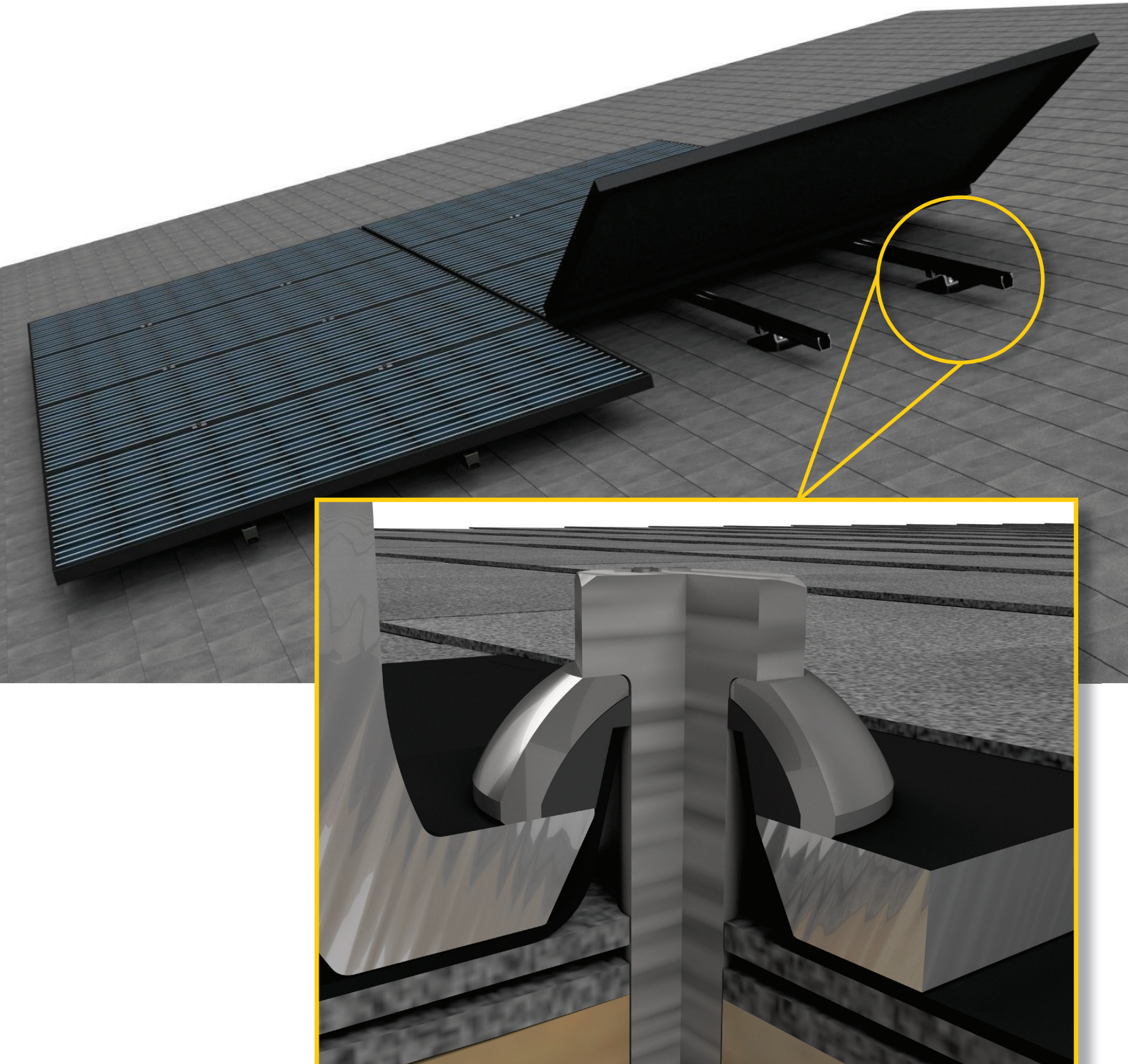


2019 Product Catalog

Updated MSRP effective Dec. 2018



Quality. Innovative. Superior.

SnapNrack Product Selector 2

SnapNrack Ultra Rail 3

SnapNrack Module Attachments 8

SnapNrack Series 100 9

SnapNrack Accessories 15

SnapNrack RL 19

SnapNrack Series 200 23

Appendix 25

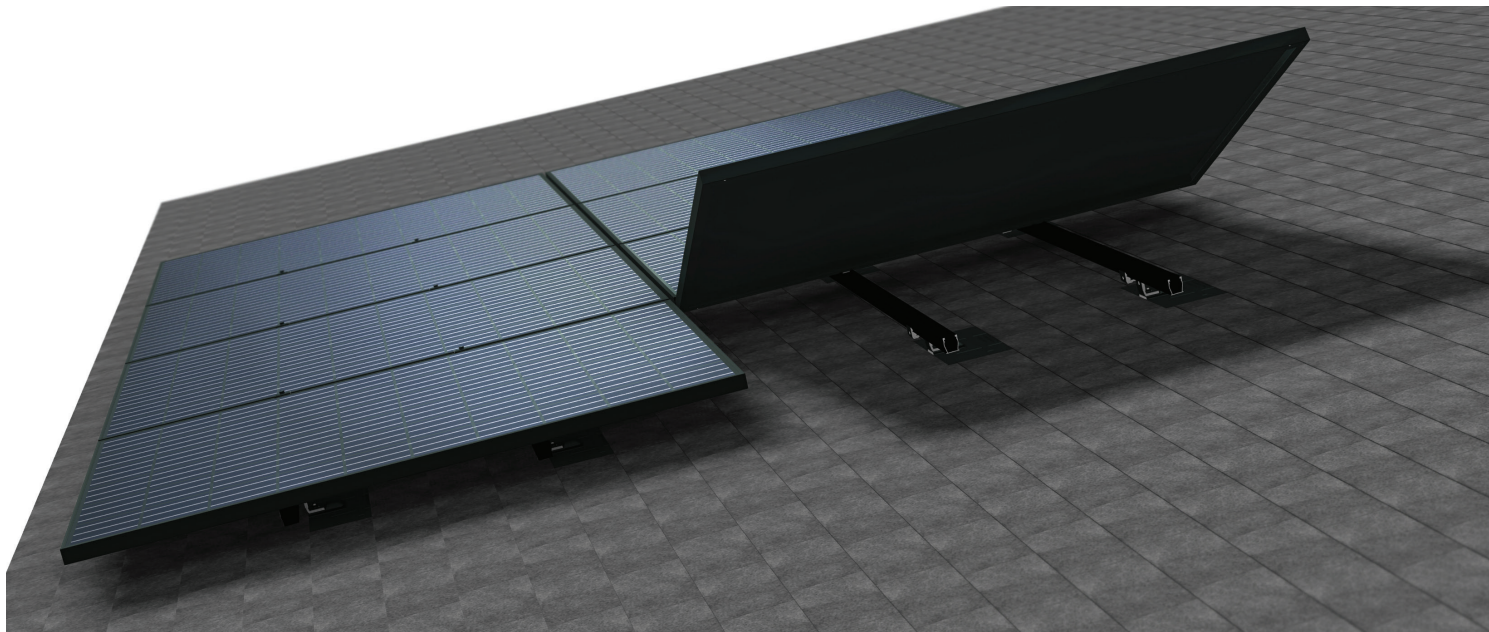
SnapNrack Mission

To provide products and services that simplify the process of installing solar systems and lower installation costs, maximize productivity and profits for our customers with top-notch quality.

SnapNrack Product Selector

RL	Series 100	Ultra Rail
The greatest labor efficiencies realized through elimination of rails. No longer are you dealing with 14 foot long sticks of rail both on the roof or in the warehouse. The intuitive design allows modules to lay down in place by a single installer. Focus on ergonomics and installation mechanics with features like topside bolting.	The most comprehensive residential roof mount racking system on the market with solutions for virtually any installation type. Superior strength and performance with allowable spans up to 10 ft. Dual integrated wire management channels along with a full suite of wire management accessories that ensures a top quality install that lasts the life of the system.	Our newest rail system optimized for low load regions. Unique snap-in mounts and splices while still maintaining the SnapNrack wire management channel and compatibility with our full suite of wire management accessories and module attachments.

	RL	S100	Ultra Rail
Composition Shingle	✓	✓	✓
Tile		✓	✓
Standing Seam and Corrugated Metal		✓	✓
Universal End Clamps Keep Racking Hidden Underneath Array		✓	✓
Sleek Black Mounts for Front of Array	✓		
Integrated Wire Management Channel		✓	✓
Dual wire channels for separation of circuits/voltages		✓	
Snap-in Wire Clamps, Junction Boxes and More		✓	✓
Module Frame Wire Management w/ Smart Clip & Wire Saver	✓		
1½ inches Vertical Leveling	✓	✓	✓
Flash Track w/ 6" North-South Adjustability	✓		
Elimination of Rails for Improved Labor Efficiency	✓		
Features for Single Person Install	✓		
Capable of 6 ft. Spans	✓	✓	✓
Capable of 8 ft. Spans		✓	
Capable of 10 ft. Spans		✓	



SnapNrack Ultra Rail **The Ultimate Value in Rooftop Solar**

Ultra Rail is a sleek, lightweight rail solution for mounting solar modules on the roof. The entire system is a snap to install utilizing new Ultra Rail Mounts that include snap-in brackets for attaching rail. Compatibility with all existing module clamps maintains the same intuitive install experience installers know and love.

- Industry-leading aesthetics with Universal End Clamps and snap-in End Caps that make the mounting system invisible underneath the array
- Unparalleled wire management solutions with accessories such as Junction Boxes, Universal Wire Clamps, MLPE Attachment Kits, and Conduit Clamps
- Low profile rail maintains the open channel with room for running wires resulting in a top quality finished install
- The largest span capabilities of any light rail solution

UR-40 Rail



UR-40 Rail, Black



UR-40 Rail, Silver



Ultra Rail Splice



UR-40 End Cap

Description	SKU	MSRP	QTY*	WT
Black Rail				
UR-40 Rail Set, 168", Black (Box of 8)	015-10202	\$509.42	1 Box	55 lbs
UR-40 Rail, 168", Black (Bundle of 144, priced as each)	232-02451	\$55.37	144 EA	655 lbs
Silver Rail				
UR-40 Rail Set, 168", Silver (Box of 8)	015-10201	\$476.19	1 Box	55 lbs
UR-40 Rail, 168", Silver (Bundle of 144, priced as each)	232-02450	\$51.76	144 EA	655 lbs
Mill Finish Rail				
UR-40 Rail Set, 168", Mill (Box of 8)	015-10203	\$415.91	1 Box	55 lbs
UR-40 Rail, 168", Mill (Bundle of 144, priced as each)	232-02449	\$45.25	144 EA	655 lbs
Rail Accessories				
Ultra Rail Splice, Silver	242-01213	\$7.25	20 EA	10 lbs
Ultra Rail Splice, Black	242-01214	\$7.50	20 EA	10 lbs
UR-40 End Cap	232-02452	\$0.70	20 EA	0.24 lbs

* QTY (Quantity) listed is the standard package and minimum order quantity. SnapNrack products are sold through distribution and may be available as individual units.

SnapRack Ultra Rail

Comp Shingle Roof Attachments



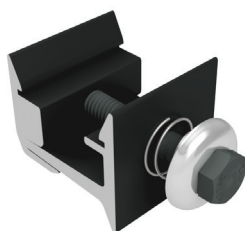
Comp Flashing



Ultra Rail Umbrella
L Foot



Umbrella Lag



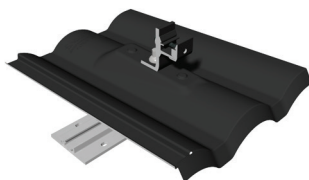
Ultra Rail Mounting
Hardware, Black



L Foot Extension Kit

Description	SKU	MSRP	QTY*	WT
Ultra Rail Umbrella L Foot, Silver	242-01219	\$6.00	20 EA	7.4 lbs
Ultra Rail Umbrella L Foot, Black	242-01220	\$6.70	20 EA	7.4 lbs
Ultra Rail Mounting Hardware, Silver	242-01229	\$2.56	20 EA	22 lbs
Ultra Rail Mounting Hardware, Black	242-01230	\$2.86	20 EA	22 lbs
Comp Flashing, 9" x 12", Black Alum (requires Umbrella Lag)	232-01375	\$5.25	20 EA	6.5 lbs
Comp Flashing, 9" x 12", Silver Alum (requires Umbrella Lag)	232-01376	\$4.35	20 EA	6.5 lbs
L Foot Extension Kit	242-01120	\$1.75	20 EA	3.8 lbs
Umbrella Lag, 4"	242-92266	\$1.55	20 EA	2.4 lbs

Tile Roof Attachments



Ultra Rail W Tile
Replacement with
W Tile Hardware Kit

Description	SKU	MSRP	QTY*	WT
Flat Tile Replacement	232-01190_BK	\$10.41	10 EA	8.2 lbs
W Tile Replacement	232-01191_BK	\$10.41	10 EA	9.1 lbs
S Tile Replacement	232-01192_BK	\$10.41	10 EA	8.8 lbs
Ultra Rail Flat Tile Hardware Kit	242-01250	\$17.68	10 Kits	17.7 lbs
Ultra Rail W Tile Hardware Kit	242-01251	\$17.68	10 Kits	18.2 lbs
Ultra Rail S Tile Hardware Kit	242-01252	\$17.68	10 Kits	18.1 lbs
Ultra Rail Flat Tile Hook	242-01224	\$16.69	10 EA	28 lbs
L Foot Extension Kit	242-01120	\$1.75	10 EA	3.8 lbs



Ultra Rail Umbrella L Foot includes Ultra Rail Mounting Hardware.

Ultra Rail Tile Replacements require matching Tile Replacement Hardware Kit. Ultra Rail Tile Replacements do not include mounting hardware kits. Ultra Rail Tile Hardware Kits include Base, Riser, Umbrella L Foot, and Umbrella Nut.

Ultra Rail Flat Tile Hook includes Ultra Rail Mounting Hardware.

Tile Roof Hooks



Ultra Rail Tile Roof Hook F



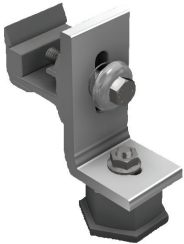
Ultra Rail Tile Roof Hook WS

Description	SKU	MSRP	QTY*	WT
Ultra Rail Tile Roof Hook F	242-01247	\$9.85	20 EA	21 lbs
Ultra Rail Tile Roof Hook WS	242-01248	\$12.88	20 EA	34 lbs



Ultra Rail Tile Roof Hook F is for application on flat tile roofs only. Ultra Rail Tile Roof Hook WS is for application on both W & S Shaped tile roofs.

Metal Roof Attachments



Ultra Rail Metal Roof Base w/ L Foot



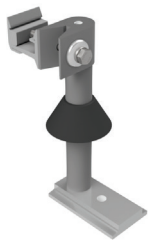
Ultra Rail Standard Base Seam Clamp w/ L Foot & Lock

Description	SKU	MSRP	QTY*	WT
Ultra Rail Metal Roof Base w/ L Foot	242-02158	\$10.45	20 EA	11 lbs
Ultra Rail Standard Base Seam Clamp w/ L Foot & Lock	242-05158	\$12.50	20 EA	17 lbs
Ultra Rail Wide Base Seam Clamp w/ L Foot & Lock	242-05159	\$13.25	20 EA	11 lbs
Ultra Rail All Purpose L Foot (90°), Silver	242-01223	\$6.68	20 EA	9 lbs

* QTY (Quantity) listed is the standard package and minimum order quantity. SnapNrack products are sold through distribution and may be available as individual units.

SnapNrack Ultra Rail

Standoff Mount Roof Attachments



Ultra Rail Flush Standoff, 7" w/ 1-Hole Base & Rain Collar

Description	SKU	MSRP	QTY*	WT
Ultra Rail Flush Standoff, 5½"	242-01257	\$9.07	20 EA	15 lbs
Ultra Rail Flush Standoff, 7"	242-01258	\$9.75	20 EA	16 lbs
Ultra Rail Flush Standoff, 8½"	242-01259	\$10.32	20 EA	19 lbs
Standoff Base 1-Hole	242-00017	\$2.75	20 EA	6 lbs
4-Hole Base w/(2) ¼"x3" Lag Screws	242-02218	\$4.25	20 EA	11 lbs
Ultra Rail HD Standoff Kit, 7" w/Base	242-01265	\$15.10	20 EA	25 lbs
Rubber Rain Collar	232-01000	\$1.18	20 EA	1 lb



Standoff Mount Roof Attachments are sold separately and not in kits.
HD Standoff Mount Roof Attachments with base are sold as a kit.

Tilt System Roof Attachments



Ultra Rail Variable Tilt Standoff Kit

Description	SKU	MSRP	QTY*	WT
Ultra Rail Tilt Standoff, 5½"	242-92106	\$11.95	20 EA	19 lbs
Ultra Rail Tilt Standoff, 10"	242-92107	\$13.80	20 EA	26 lbs
Ultra Rail Tilt Standoff, 14"	242-92108	\$16.45	20 EA	31 lbs
Ultra Rail Tilt Standoff, 23"	242-92109	\$19.95	20 EA	44 lbs
Ultra Rail Variable Tilt Hardware Kit for Metal Roof Attachments	242-92116	\$30.16	20 EA	27 lbs
Ultra Rail Variable Tilt Standoff Kit	242-92117	\$44.95	20 EA	62 lbs



Ultra Rail Tilt Standoffs include a Standoff Shaft and Ultra Rail Tilt Clamp (Standoff Clamp, L Foot, and Ultra Rail Mounting Hardware). Bases are to be ordered separately. Order 5½" Standoff for front leg and 10", 14", or 23" for rear leg to obtain desired tilt angle. **Please refer to Ultra Rail Tilt Angle Table (Nominal) on page 25 in the Appendix.**

Ultra Rail Variable Tilt Hardware Kit for Metal Roof Attachments includes L Feet, Ultra Rail Mounting Hardware, and miscellaneous hardware to complete kit for front and rear legs. Metal roof attachments (without L Foot) and section of Ultra Rail for rear leg are to be ordered separately.

Ultra Rail Variable Tilt Standoff Kit includes (2) 6-Hole Bases, (2) 7" HD standoffs, (2) Standoff Clamps and L Feet with Ultra Rail Mounting Hardware for both front and rear legs. Section of Ultra Rail for rear leg to be ordered separately.

Please refer to Ultra Rail Tilt Angle Table (Nominal) on page 25 in the Appendix to obtain desired tilt angles for 5° - 30° Fixed Tilt Kit Standoffs with Ultra Rail Tilt Clamps.

SnapNrack Module Attachments

SnapNrack Module Attachments - Ultra Rail - S100 - S200

Module Clamps are available in different sizes to match PV module frame thickness/depth. **Universal End Clamps** are a unique one-size-fits-all time saver that slips inside the module frame – completely out of sight. The rails are cut flush with the modules and finished with SnapNrack End Caps to create a system with a flush, clean line homeowners love. All Module Clamps work with Series 100, Ultra Rail and Series 200 Ground Mount.

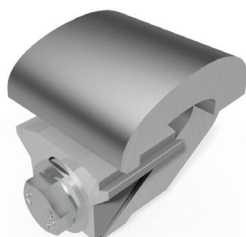
Mid Clamps



Bonding Mid Clamp,
Black

Description	SKU	MSRP	QTY*	WT
Bonding Mid Clamp, 30-38mm (1.18-1.49"), Black	242-02053	\$4.03	20 EA	3.0 lbs
Bonding Mid Clamp, 30-38mm (1.18-1.49"), Silver	242-02050	\$3.56	20 EA	3.0 lbs
Bonding Mid Clamp, 33-45mm (1.30-1.77"), Black	242-02054	\$4.03	20 EA	3.2 lbs
Bonding Mid Clamp, 33-45mm (1.30-1.77"), Silver	242-02051	\$3.56	20 EA	3.2 lbs
Bonding Mid Clamp, 38-51mm (1.49-2.00"), Black	242-02055	\$4.03	20 EA	3.3 lbs
Bonding Mid Clamp, 38-51mm (1.49-2.00"), Silver	242-02052	\$3.56	20 EA	3.3 lbs
Bonding Mid Clamp, 49-57mm (1.93-2.24"), Black	242-02057	\$4.03	20 EA	3.4 lbs
Bonding Mid Clamp, 49-57mm (1.93-2.24"), Silver	242-02056	\$3.56	20 EA	3.4 lbs

End Clamps



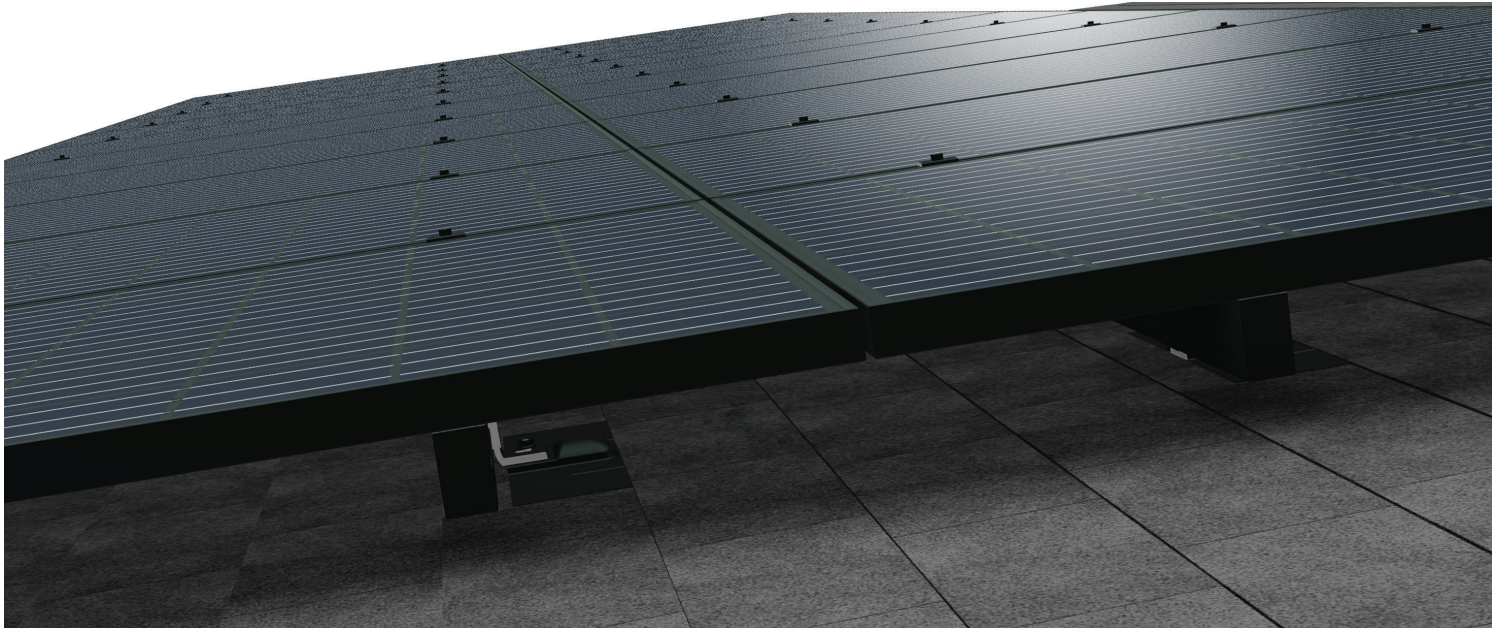
Universal End Clamp



Bonding Adjustable
End Clamp, Black

Description	SKU	MSRP	QTY*	WT
Universal End Clamp	242-02215	\$5.46	20 EA	6 lbs
Bonding Adjustable End Clamp, 30-38mm (1.18-1.49"), Black	242-02067	\$7.12	20 EA	3.6 lbs
Bonding Adjustable End Clamp, 30-38mm (1.18-1.49"), Silver	242-02065	\$6.41	20 EA	3.6 lbs
Bonding Adjustable End Clamp, 38-51mm (1.49-2.00"), Black	242-02068	\$7.12	20 EA	3.6 lbs
Bonding Adjustable End Clamp, 38-51mm (1.49-2.00"), Silver	242-02066	\$6.41	20 EA	3.6 lbs

* **QTY (Quantity)** listed is the standard package and minimum order quantity. SnapNrack products are sold through distribution and may be available as individual units.



SnapNrack Series 100 **The Installer's Choice for Residential Solar Mounting**

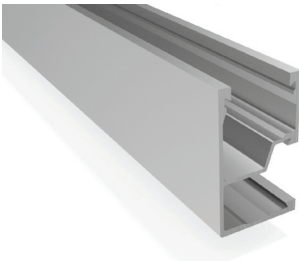
Series 100 is the most complete system solution for mounting solar modules on the roof in any region or loading condition. The top-of-the-line features of this SnapNrack mounting solution reduce install times and labor cost while eliminating the need for service calls creating the lowest installed lifecycle cost of any mounting system. Industry-leading aesthetics with Universal End Clamps and snap-in End Caps make this mounting system invisible underneath the array.

- Undeniable aesthetics using Universal End Clamps that render the mounting system invisible by fastening on the inside of the modules underneath the array
- Optional Array Skirt provides a sleek look and attractive design to the front of the array
- Two rail channels keep wires neatly organized providing a clean finished look to every install
- Industry's largest offering of wire management accessories include snap-in Junction Boxes and Universal Wire Clamps, as well as conduit clamps for both composition shingle and tile roofs
- The largest span capabilities of any SnapNrack mounting system

Series 100 Rail



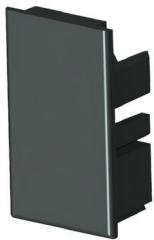
S100 Rail, Black



S100 Rail, Silver



Bonding Standard Rail Splice, Black

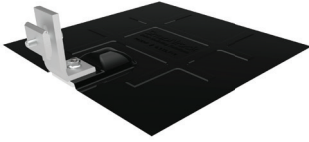


Standard Rail End Cap

Description	SKU	MSRP	QTY*	WT
Black Rail				
Standard Rail Set, 122", Black (Box of 2)	015-09816	\$169.10	1 Box	20 lbs
Standard Rail Set, 122", Black (Box of 6)	015-09822	\$448.63	1 Box	51 lbs
Standard Rail, 122", Black (Bundle of 112, priced as each)	232-01067	\$67.68	112 EA	900 lbs
Standard Rail Set, 162", Black (Box of 2)	015-09818	\$211.85	1 Box	29 lbs
Standard Rail Set, 162", Black (Box of 6)	015-09826	\$569.52	1 Box	66 lbs
Standard Rail, 162", Black (Bundle of 112, priced as each)	232-01069	\$85.97	112 EA	1,200 lbs
Silver Rail				
Standard Rail Set, 122", Silver (Box of 2)	015-09814	\$136.80	1 Box	20 lbs
Standard Rail Set, 122", Silver (Box of 6)	015-09813	\$350.55	1 Box	51 lbs
Standard Rail, 122", Silver (Bundle of 112, priced as each)	232-01068	\$52.25	112 EA	900 lbs
Standard Rail Set, 162", Silver (Box of 2)	015-09817	\$176.70	1 Box	29 lbs
Standard Rail Set, 162", Silver (Box of 6)	015-09824	\$464.55	1 Box	66 lbs
Standard Rail, 162", Silver (Bundle of 112, priced as each)	232-01070	\$69.58	112 EA	1,200 lbs
Mill Finish Rail				
Standard Rail, 122", Mill Finish (Bundle of 112, priced as each)	232-02112	\$47.02	112 EA	900 lbs
Standard Rail, 162", Mill Finish (Bundle of 112, priced as each)	232-02113	\$61.75	112 EA	1,200 lbs
Rail Accessories				
Bonding Standard Rail Splice, Black	242-04015	\$10.92	20 EA	13 lbs
Bonding Standard Rail Splice, Silver	242-04014	\$10.21	20 EA	13 lbs
Standard Rail End Cap	232-01023	\$2.13	20 EA	0.80 lbs

* QTY (Quantity) listed is the standard package and minimum order quantity. SnapRack products are sold through distribution and may be available as individual units.

Comp Shingle Roof Attachments



Comp Kit w/ Silver Composition L Foot & Base



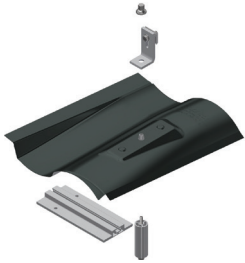
Black L Foot

Description	SKU	MSRP	QTY*	WT
S100 Comp Kit w/ Black Composition L Foot, Black Alum Flashing, & Base	242-92048	\$14.96	20 Kits	18 lbs
S100 Comp Kit w/ Silver Composition L Foot, Black Galv Flashing, & Base	242-92050	\$11.63	20 Kits	25 lbs
S100 Comp Kit w/ Black Composition L Foot, Black Galv Flashing, & Base	242-92051	\$11.94	20 Kits	25 lbs
Flashed L Foot Flashing, 12" x 12", Black Galv	232-01060	\$5.93	20 EA	17 lbs
Flashed L Foot Flashing, 12" x 12", Black Alum	232-01151	\$8.55	20 EA	10 lbs
Flashed L Foot Flashing, 12" x 12", Silver Alum	232-01150	\$5.76	20 EA	10 lbs
Flashed L Foot Base (includes flange nut)	242-00016	\$3.08	20 EA	3.6 lbs
S100 Composition L Foot (92°), Black	242-09015	\$4.27	20 EA	4.4 lbs
S100 Composition L Foot (92°), Silver	242-09005	\$3.56	20 EA	4.4 lbs
S100 All Purpose L Foot (90°), Black	242-09020	\$4.98	20 EA	4.4 lbs
S100 All Purpose L Foot (90°), Silver	242-09019	\$4.27	20 EA	4.4 lbs
Standoff Spacer, 1"	242-92081	\$1.66	20 EA	1.6 lbs
Lag Screw & Washer, 5/16" x 3½", SS (Pack of 12)	014-06500	\$17.50	1 Pack	0.87 lbs
Lag Screw & Washer, 5/16" x 3½", SS (Pack of 100)	014-06508	\$124.25	1 Pack	7 lbs
Lag Screw & Washer, 5/16" x 5", SS (Pack of 12)	014-06502	\$27.75	1 Pack	1.1 lbs

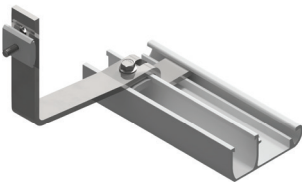


L Foot Flashing Kits include a L Foot Flashing, L Foot Base and the Composition L Foot with Original Channel Nut.

Tile Roof Attachments



S100 S Tile Replacement



S100 Universal Tile Hook

Description	SKU	MSRP	QTY*	WT
Flat Tile Replacement	232-01190_BK	\$10.41	10 EA	8.2 lbs
W Tile Replacement	232-01191_BK	\$10.41	10 EA	9.1 lbs
S Tile Replacement	232-01192_BK	\$10.41	10 EA	8.8 lbs
S100 Flat Tile Hardware Kit	242-01253	\$14.57	10 Kits	16.3 lbs
S100 Flat Tile Hook	242-02045	\$14.25	20 EA	24 lbs
S100 Universal Tile Hook	242-02044	\$30.16	20 EA	44 lbs
L Foot Extension Kit	242-01120	\$1.75	20 EA	3.8 lbs



Tile Replacement flashings and hardware kits are sold separately.

Metal Roof Attachments



S100 Metal Roof Base w/ L Foot



S100 Standard Base Seam Clamp w/ L Foot & Lock

Description	SKU	MSRP	QTY*	WT
S100 Metal Roof Base w/ All Purpose L Foot	242-02037	\$9.50	20 EA	8 lbs
Metal Roof Base	242-02036	\$5.70	20 EA	3.0 lbs
S100 Standard Base Seam Clamp w/ All Purpose L Foot & Lock	242-05156	\$11.87	20 EA	13 lbs
Standard Base Seam Clamp	242-05000	\$6.88	20 EA	8 lbs
S100 Wide Base Seam Clamp w/ All Purpose L Foot & Lock	242-05157	\$12.82	20 EA	14 lbs
Wide Base Seam Clamp	242-05001	\$7.83	20 EA	9 lbs
S100 Corrugated Straddle Block w/ All Purpose L Foot	242-02046	\$8.31	20 Kits	11 lbs
Corrugated Straddle Block	232-02421	\$3.56	20 EA	6 lbs
S100 Hanger Bolt Clamp	242-01102	\$5.22	20 EA	4.0 lbs

* QTY (Quantity) listed is the standard package and minimum order quantity. SnapRack products are sold through distribution and may be available as individual units.

Standoff Mount Roof Attachments



S100 Standoff Kit, 5 1/2"



HD Standoff Base,
6-Hole



S100 Standoff
Clamp Assembly

Description	SKU	MSRP	QTY*	WT
S100 Standoff Kit, 5 1/2"	242-92057	\$11.16	20 Kits	18 lbs
S100 Standoff Kit, 7"	242-92059	\$11.87	20 Kits	20 lbs
S100 Standoff Kit, 8 1/2"	242-92061	\$12.58	20 Kits	22 lbs
S100 Standoff Kit, 10"	242-92055	\$13.30	20 Kits	22 lbs
S100 HD Standoff Kit, 7"	242-92073	\$13.77	20 Kits	23 lbs
S100 HD Standoff Kit, 12"	242-92074	\$16.62	20 Kits	31 lbs
S100 HD Standoff Kit, 18"	242-92075	\$20.18	20 Kits	40 lbs
Standoff Base, 4-Hole	232-02412	\$3.56	20 EA	3.6 lbs
Standoff Spacer, 1"	242-92081	\$1.66	20 EA	1.6 lbs
S100 Standoff Clamp Assembly	242-04100	\$2.85	20 EA	4.2 lbs

Tilt System Roof Attachments



10° Tilt Kit w/
5 1/2" & 10" Standoffs

Description	SKU	MSRP	QTY*	WT
S100 10° Tilt Kit (Low Tilt) w/ 5 1/2" & 10" Standoffs	242-92077	\$30.16	20 Kits	51 lbs
S100 20° HD Tilt Kit (Medium Tilt) w/ 7" & 18" HD Standoffs	242-92079	\$40.13	20 Kits	70 lbs
S100 10° - 30° Variable Tilt Hardware Kit	242-92083	\$10.45	20 Kits	12 lbs

Standoff Flashings & Accessories



Rubber Rain Collar

Description	SKU	MSRP	QTY*	WT
E-Curb, 4.5" x 3.5", Gray, Pourable (Pack of 4)	131-01357	\$147.00	1 Pack	28 lbs
Rubber Rain Collar	232-01000	\$1.18	20 EA	1 lb
Standoff Flashing, Straight Cone for HD Base, 18" X 18" X 4", Galv	131-01213	\$18.04	12 EA	17 lbs
Standoff Flashing, Verde 1.0STF, Skinny Cone for Tile, 20" x 20" x 3", Dead Soft Alum	175-05001	\$16.25	25 EA	25 lbs
Standoff Flashing, Offset Cone for 1-Hole Base on Flat Tile, 18 3/4" x 15" x 4", Galv	131-01216	\$13.00	20 EA	17 lbs
Standoff Flashing, Oatey 11830, No Caulk Rubber Cone, 9" x 12 1/2", Galv	015-00162	\$11.00	12 EA	8 lbs
Standoff Flashing, Verde 1.0SSO, Deck Level for 1-Hole Base, 10" x 12" x 1", Galv	175-05005	\$5.75	25 EA	17 lbs



Standoff Kits include a 1-Hole Base, Standoff Shaft, Rubber Rain Collar, and a Standoff Clamp Assembly with Original Channel Nut.

HD Standoff Kits include a 6-Hole HD Base, HD Standoff Shaft, Rubber Rain Collar, and a Standoff Clamp assembly with Original Channel Nut.

Tilt Kits include two standoff mounts each comprised of a 1-Hole Base, Standoff Shaft, Rubber Rain Collar, and a Standoff Clamp and L Foot Assembly with Original Channel Nut.

HD Tilt Kits include two standoff mounts each comprised of a 6-Hole HD Base, HD Standoff Shaft, Rubber Rain Collar, and a Standoff Clamp and L Foot Assembly with Original Channel Nut.

The 10° - 30° Variable Tilt Hardware Kit can be combined with a pair of HD Standoff Kits and a short piece of Standard Rail to achieve a wide range of tilt angles.



Tilt angles are relative to the roof pitch and assume a 30" North-South attachment spacing.

* QTY (Quantity) listed is the standard package and minimum order quantity. SnapRack products are sold through distribution and may be available as individual units.

SnapNrack Accessories - Ultra Rail - S100 - S200

SnapNrack offers the largest set of mounting accessories to enhance the install process. SnapNrack **Wire Management Solutions** comprise a set of dedicated components to reliably and cost-effectively secure PV module and microinverter leads. All components are made of materials which have been selected for their ability to handle high UV exposure and extreme rooftop temperatures common under solar arrays. The UL-listed **Junction Box R for rail** and **Junction Box XL for rail** provide a quick and easy method for concealing and protecting electrical connections with a NEMA 4X rating and integrated DIN rail mounts inside (DIN rail not included with box). The **Universal Wire Clamp** offers a strong and reliable solution for securing up to four PV conductor cables or up to two microinverter Q cables along SnapNrack rail channels, transitioning in and out of channels, and even routing across rails. **Snap-In Wire Retention Clips** allow you to quickly secure PV conductors, Q Cables, and AC trunk lines in the rail channels. With materials selected to handle high UV exposure and extreme rooftop temperatures these solutions provide wire management that will last the life of the system after a quick and cost-effective installation.

Wire & Electronics Management



Junction Box XL



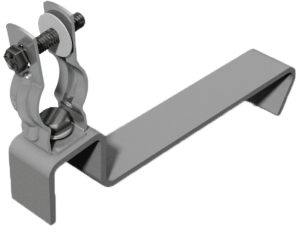
Universal Wire Clamp



Wire Retention Clip

Description	SKU	MSRP	QTY*	WT
Junction Box R for Rail	242-01104	\$28.50	1 EA	1.2 lbs
Junction Box XL for Rail	242-92120	\$44.95	1 EA	2.2 lbs
Junction Box S with Comp Kit	242-01113	\$34.87	1 EA	2.2 lbs
Junction Box XL with Comp Kit	242-92121	\$49.95	1 Kit	4.7 lbs
Universal Wire Clamp for Rail	242-02150	\$3.56	20 EA	3.2 lbs
Universal Wire Clamp for J Box	242-09025	\$3.87	1 EA	0.20 lbs
Engage Cable Clamp for Rail	242-02103	\$3.56	20 EA	2.7 lbs
Snap-in Wire Retention Clip	232-01106	\$0.47	20 EA	0.02 lbs
Smart Clip I	232-01170	\$0.40	100 EA	1.0 lbs
Smart Clip II	232-01173	\$0.40	100 EA	1.0 lbs
MLPE Rail Attachment Kit	242-92093	\$2.26	20 Kits	3.2 lbs
MLPE Frame Attachment Kit	242-02151	\$4.25	20 EA	2.7 lbs

Conduit Supports



Conduit Support - Tile

Description	SKU	MSRP	QTY*	WT
Conduit Support for Tile, 3/4" EMT	242-02104	\$5.70	20 EA	1.5 lbs
Conduit Support Kit for Comp, 3/4" EMT	242-02106	\$10.45	20 Kits	22 lbs
Conduit Support for Tile, 1" EMT	242-02108	\$6.21	20 EA	1.5 lbs
Conduit Support Kit for Comp, 1" EMT	242-02109	\$10.96	20 Kits	22 lbs



Conduit Support -
Comp

Grounding



Ground Lug R,
6-12 AWG

Description	SKU	MSRP	QTY*	WT
Ground Lug R, 6-12 AWG	242-02101	\$4.75	20 EA	5 lbs
Lay-in Lug w/ Bolt and Keps Lock Nut, 4-14 AWG (Pack of 10)	051-03418	\$45.00	1 Pack	0.72 lbs



MLPE Rail Attachment Kit includes over-sized Fender Washer, Channel Nut and serrated Flange Bolt.

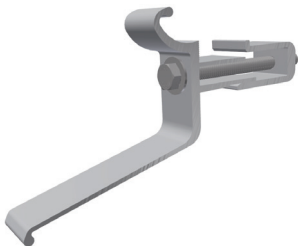
* QTY (Quantity) listed is the standard package and minimum order quantity. SnapRack products are sold through distribution and may be available as individual units.

Array Skirt

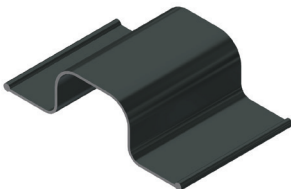


Skirt, 162"

Description	SKU	MSRP	QTY*	WT
Skirt Set, 162" (Box of 6)	015-11787	\$506.35	1 Box	61 lbs
Skirt, 162" (Bundle of 60, priced as each)	232-01259	\$78.13	60 EA	550 lbs
Skirt Frame Mount	242-92211	\$4.75	20 EA	4.6 lbs
Skirt Splice	232-01251	\$2.37	20 EA	2.6 lbs
Skirt End Cap Pair	232-01250	\$2.13	20 EA	1.0 lbs



Skirt Frame Mount



Skirt Splice



Skirt End Cap Pair

Array Edge Screen

Description	SKU	MSRP	QTY*	WT
Array Edge Screen Kit, 4" x 100', 40 Clips	015-11176	\$152.00	1 Kit	14 lbs
Array Edge Screen Kit, 8" x 100', 40 Clips	015-11177	\$242.25	1 Kit	27 lbs
Array Edge Screen Clip, 4"	232-03993	\$2.13	20 EA	2.0 lbs
Array Edge Screen Clip, 8"	232-03994	\$2.61	20 EA	4.0 lbs
Add-A-Lip Box Frame Adapter, Black	242-01101	\$6.41	20 EA	6 lbs



Array Edge Screen Kits include 100 ft. of Array Edge Screen and 40 Array Edge Screen Clips.

Add-A-Lip Box Frame Adapter is for use with module frames that do not have a bottom lip for attaching the Array Edge Screen Clip.

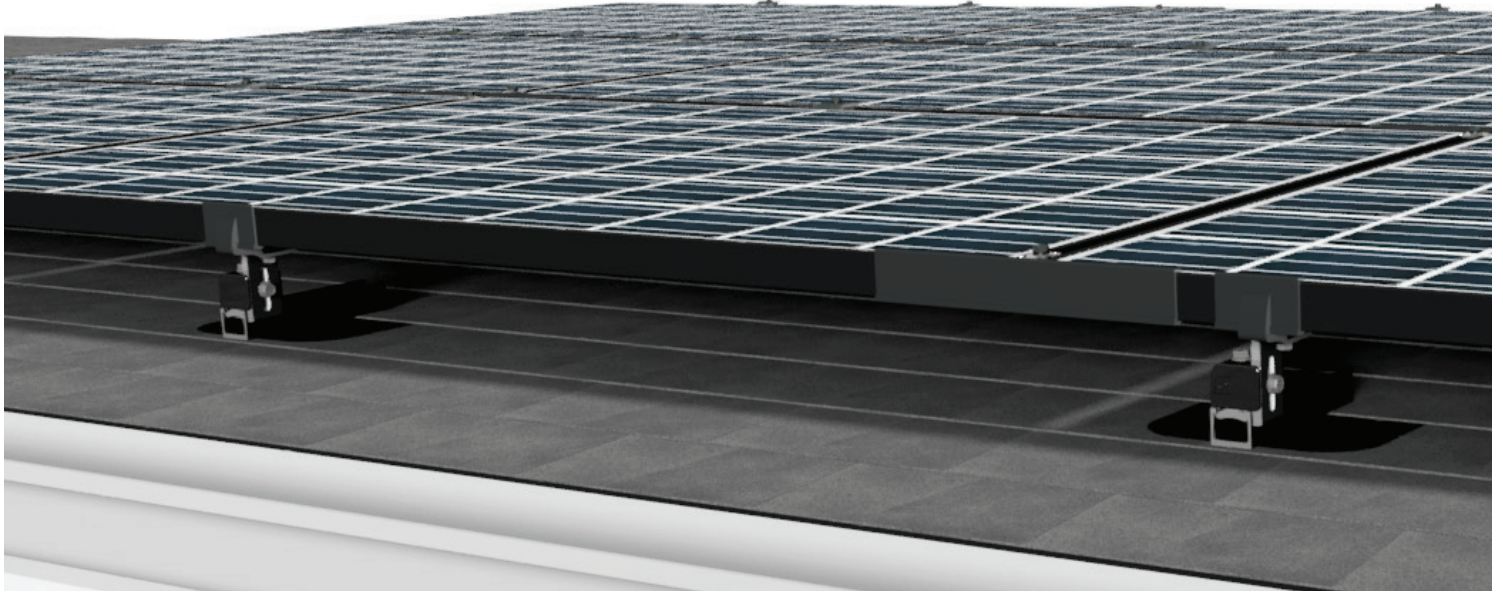
Deck Level Flashing for Tile

Description	SKU	MSRP	QTY*	WT
PS45 Deck Level Flashing Set, (1) 9x9 & (1) 4X13	242-02723	\$3.98	20 Sets	8 lbs
PS45 Deck Level Flashing Set, (1) 5X13 & (1) 4X17	242-02728	\$3.98	20 Sets	8 lbs
Protecto-Tak Spray Adhesive	131-01347	\$29.99	20 EA	22 lbs

Misc

Description	SKU	MSRP	QTY*	WT
Original Channel Nut	232-02005	\$0.71	20 EA	0.90 lbs
UEC Rail Cutting Tool	232-02284	\$14.25	20 EA	12 lbs

* QTY (Quantity) listed is the standard package and minimum order quantity. SnapRack products are sold through distribution and may be available as individual units.



SnapNrack RL **The Fastest Mounting System Period**

SnapNrack RL Mounting System is designed to provide the fastest, most intuitive install experience on the roof. As Simple as A, B, C the entire system consists only of 4 parts: the A Mounts, B Mounts, C Links, and Flash Tracks making planning and ordering straightforward. The installer focused process allows the system to be installed by a single person.

- Industry leading railless aesthetics with sleek A Mount design that provides a clean finish to the front of the array without the need for a skirt
- System designed with maximum versatility allowing for any array configuration including staggered modules
- Flash Track with patented Umbrella technology provides weatherproofing with a long-lasting mechanical seal and 6 inches of North-South adjustability
- Designed with Wire Management as a priority utilizing new Smart Clips to firmly retain wires within the module frame and new Wire Saver for securing hanging cables post install
- Incredible span capabilities for a mounting system without rails, reaching 6 foot spans in most regions



RL Roof Attachments



RL Comp Flash Track



Comp Flashing



Umbrella Lag

Description	SKU	MSRP	QTY*	WT
RL Flash Track, 7 1/2"	232-04060	\$5.25	20 EA	7.8 lbs
Comp Flashing, 9" x 12", Black Alum (requires Umbrella Lag)	232-01375	\$5.25	20 EA	6.5 lbs
Comp Flashing, 9" x 12", Silver Alum (requires Umbrella Lag)	232-01376	\$4.35	20 EA	6.5 lbs
Umbrella Lag, 4"	242-92266	\$1.55	20 EA	2.4 lbs
RL Flash Track Spacer	242-92254	\$8.98	20 EA	5 lbs

RL A Mounts



RL A Mount

Description	SKU	MSRP	QTY*	WT
RL A Mount, 32mm	242-92332	\$12.32	20 EA	16 lbs
RL A Mount, 35mm	242-92335	\$12.32	20 EA	16 lbs
RL A Mount, 38mm	242-92338	\$12.32	20 EA	16 lbs
RL A Mount, 40mm	242-92340	\$12.32	20 EA	16 lbs

RL B Mounts



RL B Mount

Description	SKU	MSRP	QTY*	WT
RL B Mount, 32mm	242-92432	\$12.65	20 EA	16 lbs
RL B Mount, 35mm	242-92435	\$12.65	20 EA	16 lbs
RL B Mount, 38mm	242-92438	\$12.65	20 EA	16 lbs
RL B Mount, 40mm	242-92440	\$12.65	20 EA	16 lbs

* QTY (Quantity) listed is the standard package and minimum order quantity. SnapRack products are sold through distribution and may be available as individual units.

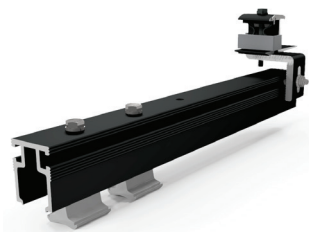
RL C Links



RL C Link

Description	SKU	MSRP	QTY*	WT
RL C Link, 32mm	242-92532	\$10.43	20 EA	13 lbs
RL C Link, 35mm	242-92535	\$10.43	20 EA	13 lbs
RL C Link, 38mm	242-92538	\$10.43	20 EA	13 lbs
RL C Link, 40mm	242-92540	\$10.43	20 EA	13 lbs

RL Ridge Mount



RL Ridge Mount

Description	SKU	MSRP	QTY*	WT
RL Ridge Mount, 32mm	242-92632	\$30.49	20 EA	47 lbs
RL Ridge Mount, 35mm	242-92635	\$30.49	20 EA	47 lbs
RL Ridge Mount, 38mm	242-92638	\$30.49	20 EA	47 lbs
RL Ridge Mount, 40mm	242-92640	\$30.49	20 EA	47 lbs

RL Mount Sleeve



RL Mount Sleeve

Description	SKU	MSRP	QTY*	WT
RL Mount Sleeve, 32mm	232-01532	\$1.56	20 EA	2.4 lbs
RL Mount Sleeve, 35mm	232-01535	\$1.56	20 EA	2.4 lbs
RL Mount Sleeve, 38mm	232-01538	\$1.56	20 EA	2.4 lbs
RL Mount Sleeve, 40mm	232-01540	\$1.56	20 EA	2.4 lbs

RL Wire & Electronics Management



Smart Clip I



Wire Saver



RL Ground Lug



MLPE Frame
Attachment Kit

Description	SKU	MSRP	QTY*	WT
Smart Clip I	232-01170	\$0.40	100 EA	1.0 lbs
Smart Clip II	232-01173	\$0.40	100 EA	1.0 lbs
Wire Saver	242-92262	\$2.69	20 EA	0.42 lbs
Junction Box S with Comp Kit	242-01113	\$34.87	1 Kit	2.2 lbs
Junction Box XL with Comp Kit	242-92121	\$49.95	1 Kit	4.7 lbs
Universal Wire Clamp for J Box	242-09025	\$3.87	1 EA	0.20 lbs
Ground Lug RL	242-92202	\$5.15	20 EA	2.0 lbs
MLPE Frame Attachment Kit	242-02151	\$4.25	20 EA	2.7 lbs

* QTY (Quantity) listed is the standard package and minimum order quantity. SnapRack products are sold through distribution and may be available as individual units.

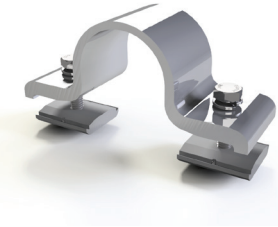


SnapNrack Series 200 **The Adaptable High Quality Solution for** **Ground Mount Installations**

The Series 200 Ground Mount System is designed to attach easily to a standard 1 ½" galvanized pipe structure using structural pipe fittings. Using a standard three to four-module high assembly, the system is efficient and flexible while optimizing materials and minimizing system footprint. Industry leading installation times are achieved with unique snap-in fasteners.

- Assembles easily using snap-in bonding pipe clamps that connect the rails
- Fully compatible with all SnapNrack module clamps and accessories
- Ground rail channel keeps wires neatly organized providing a clean finished look to every install
- Industry's largest offering of Wire Management accessories include snap-in Junction Boxes, Universal Wire Clamps, as well as ground rail channel to keep wires neatly organized
- Maximum versatility with the ability to configure easily to desired tilt between 0 and 45 degrees
- Using pipe structural fittings, labor hours to install the system are typically less than required for a more complicated racking system not using standardized components

Structural Fittings



Bonding Pipe Clamp



Double Adjustable
Socket Tee, Hollaender

Description	SKU	MSRP	QTY*	WT
Bonding Pipe Clamp for 1 ½" Pipe	242-09004	\$6.65	20 EA	9 lbs
Single Socket Tee, Hollaender (5E-8), 1 ½", AL-MG	172-05800	\$12.50	1 EA	0.55 lbs
Single Adjustable Socket Tee, Hollaender (17-8), 1 ½", AL-MG	172-05803	\$18.75	1 EA	1.1 lbs
Double Adjustable Socket Tee, Hollaender (19E-8), 1 ½", AL-MG	172-05804	\$24.00	1 EA	0.85 lbs
Rectangular Base Flange, Hollaender (46-8), 1 ½", AL-MG	172-05807	\$18.50	1 EA	0.55 lbs
Plug End, Hollaender (62-8), 1 ½" Sched 40, AL	172-05808	\$5.00	1 EA	0.16 lbs

Series 200 Rail



Ground Rail

Description	SKU	MSRP	QTY*	WT
Ground Rail Set, 122", Silver (Box of 4)	015-09839	\$299.25	1 Box	38 lbs
Ground Rail, 122", Silver (Bundle of 112, priced as each)	232-02183	\$67.45	112 EA	1,252 lbs
Ground Rail Set, 162", Silver (Box of 2)	015-09819	\$191.90	1 Box	29 lbs
Ground Rail Set, 162", Silver (Box of 4)	015-09855	\$342.00	1 Box	49 lbs
Ground Rail, 162", Silver (Bundle of 112, priced as each)	232-01072	\$79.32	112 EA	1,790 lbs
Ground Rail End Cap	232-01043	\$2.61	20 EA	1.6 lbs

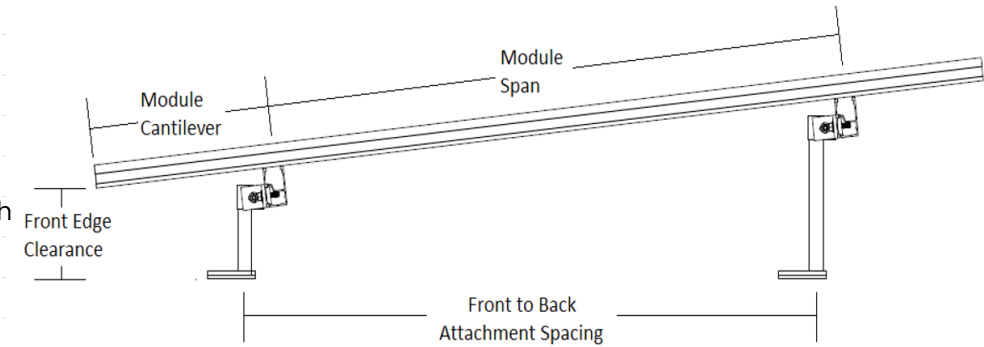
* QTY (Quantity) listed is the standard package and minimum order quantity. SnapRack products are sold through distribution and may be available as individual units.

Ultra Rail Tilt Angle Table (Nominal)
5° - 30° Fixed Tilt Kits - Standoffs with Ultra Rail Tilt Clamps

Front to back attachment spacing	Landscape			Portrait		
	5 1/2" & 10" Standoffs	5 1/2" & 14" Standoffs	5 1/2" & 23" Standoffs	5 1/2" & 10" Standoffs	5 1/2" & 14" Standoffs	5 1/2" & 23" Standoffs
16"	16°	28°	N/A	N/A	N/A	N/A
24"	10°	20°	N/A	N/A	N/A	N/A
32"	8°	15°	28°	8°	15°	28°
48"	N/A	N/A	N/A	5°	10°	20°

Notes:

- 1. Table is based on 60 cell modules
- 2. Table assumes mounting zone on portrait modules not exceeding 25% of module length
- 3. Maximum tilt angle allowed = 30° relative to horizontal
- 4. All tilt ups must have 5-1/2" Standoff in front



Quality. Innovative. Superior.

SnapNrack Solar Mounting Solutions are engineered to optimize material use and labor resources and improve overall installation quality and safety.

Warranty

All SnapNrack products are covered by a **25-year limited warranty**. For complete details please visit www.snapnrack.com/resources.

MSRP

Prices published in this document are Manufacturer Suggested Retail Prices (MSRP) and should be used for reference only. Prices are subject to change without notice. The quantity (QTY) and weight (WT) shown are based on the standard package and order quantity.

Contact your SnapNrack distributor, which can be found at www.SnapNrack.com/where-to-buy, contact us directly at contact@SnapNrack.com, or call us **Toll Free at (877) 732-2860** for technical support.

SnapNrack distributors have trained knowledgeable staff that can provide product design and ordering assistance.





877-732-2860



www.snapnrack.com



contact@snapnrack.com