

HL3

3-inch LED downlighting

HALO



EATON

Powering Business Worldwide

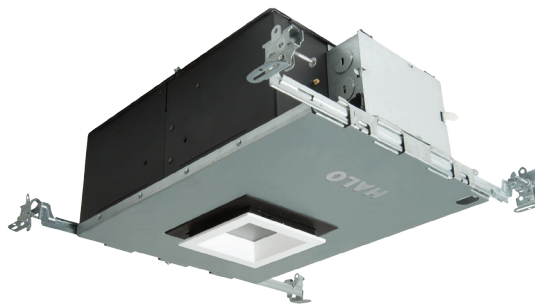
HL3 3-inch housings and trims

LED recessed luminaires

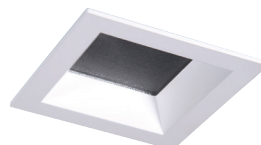
A 3-inch family of round and square aperture LED downlight / directional housings with field interchangeable optics. High efficiency, excellent light control and low aperture brightness are required. The HL3 is ideal for accent, task and general area lighting. Airtight housings, suitable for residential or shallow plenum commercial constructions and can be used in direct contact with insulation.



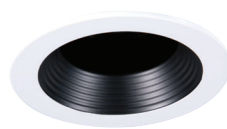
HL36A - 3" shallow round new construction directional housing



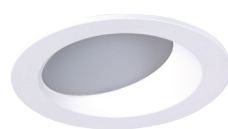
HL36SA - 3" shallow square new construction directional housing



open, reflector



open, baffle



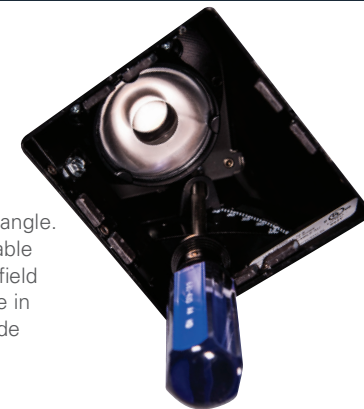
wall wash



lens

Aim and focus

The housings have a built-in adjustment mechanism that will rotate 365°, tilt 45° and locks in position maintaining any aiming angle. Angle markings assist in repeatable settings. The primary optics are field interchangeable and are available in spot, narrow flood, flood and wide flood distribution patterns.



TIR45SP15
spot, 15°



TIR45NFL25
narrow flood, 25°



TIR45FL40
flood, 40°



TIR45WFL55
wide flood, 55°

Rimless feature

Standard round and square housings can be converted to a rimless applications using the rimless adapter. A true knife-edge interface with the trim provides a "quiet ceiling" appearance.



Trim installation

Each Halo HL3 housing is fitted with (8) rare earth Neodymium magnets that securely hold the trim in place. This allows for subtle repositioning to align apertures.



Our Lighting Product Lines

Ametrix
AtLite
Corelite
Ephesus
Fail-Safe
HALO
HALO Commercial
Invue
io
IRiS
Lumark
Lumière
McGraw-Edison
Metalux
MWS
Neo-Ray
Portfolio
RSA
Shaper
Streetworks
Sure-Lites

Our Controls Product Lines

Fifth Light Technology
Greengate
iLight (International Only)
iLumin
Zero 88

Connected Lighting Systems

Distributed Low-Voltage Power
HALO Home
iLumen Plus
LumaWatt Pro
WaveLinx

Eaton

1121 Highway 74 South
Peachtree City, GA 30269
P: 770-486-4800
eaton.com/lighting

Canada Sales

5925 McLaughlin Road
Mississauga, Ontario L5R 1B8
P: 905-501-3000
F: 905-501-3172

© 2019 Eaton
All Rights Reserved
Printed in USA
Publication No. BR518060EN
February 2019

Eaton is a registered trademark.

All other trademarks are property
of their respective owners.

Product availability, specifications,
and compliances are subject to
change without notice.



Powering Business Worldwide