

Project	
Type	
Notes	
Catalog No.	
Date	

L6000 Series

LED Radial Wrap (PCB)

The L6000 LED radial is a modern fixture in a bright white finish. Ideal for lighting stairwells and multi-deck parking. The 6000 drives excellent paybacks while providing an aesthetic upgrade.



Specifications

Applications

- Parking Garages
- Laundry Facilities
- Stairwells
- Corridors
- Night Lighting
- Corridors
- Canopies

Construction

- Housing made from die formed heavy gauge pre-painted cold rolled steel and is finished with a post- production white polyester polymer
- Available with an extended body to house a sensor within the box or externally
- Tool-less sensor mounting plate allows for easy access when making sensor adjustments or when performing fixture maintenance
- Frosted lens

Mounting

- Surface Mount. Cord and plug options offered.

Options

- Sensors can be integrated for additional energy savings
- Emergency battery back-up
- Extended body

Warranty

- Five-year warranty.* Terms and Conditions Apply.
See warranty documentation for more information.

Certification

- ETL Compliant
- Adheres to LM79, LM80 and TM21 industry standards
- DesignLights Consortium® (DLC) qualified
- Lighting Facts
- RoHS Compliant



Catalog Ordering Example

L6048-52W-50K-EB-OS

L60

Family Type	Length in Inches/Wattage	Color Temp	Options
L60	24 - 16W (2 Foot, 17 Watt/ 2,000 lms)	30K (3000 Kelvin Temp)	OS (Occupancy Sensor)
	24 - 27W (2 Foot, 27 Watt/ 2,859 lms)	35K (3500 Kelvin Temp)	OSD (Occupancy Sensor w/ Daylight)
	48 - 31W (4 Foot, 32 Watts/ 4,100 lms)	40K (4000 Kelvin Temp)	PRGOS-LS (Sensorswitch LSXR-ADC-3v Occ Sensor w/ Dimming Photocell)
	48 - 52W (4 Foot, 53 Watt/ 5,300 lms)	50K (5000 Kelvin Temp)	PRGOS-LO (IRTEC LOD509 Bi-Level Occ Sensor w/ Photocell)
	96 - 62W (8 Foot, 64 Watt/ 8,200 lms)*		PRGOS-LR (IRTEC LRD509 Programmable Occ Sensor w/ Remote Control)
	96 - 104W (8 Foot, 106 Watt/ 10,600 lms)*		PRGOS-FS Wattstopper FSP211 Programmable Occ Sensor w/ Remote Control/ Integral and J-Box Mounted)
			PLG (6' SJT Cord & Plug)
			EB (Extended Body)
			PP (PowerPlus)
			EM7W (Emergency Battery Backup, 7 Watts, ~600 lms)**
			EM10W (Emergency Battery Backup, 10 Watts, ~800 lms)**
			EM10WT20Emergency Battery Backup, 10 Watts, Constant Power, Title 20 Compliant, ~1625 lms)**
			EM15WT20Emergency Battery Backup, 15 Watts, Constant Power, Title 20 Compliant, ~2400 lms)**

*Not DLC Listed ** Lumens will change based on fixture selection

Specifications and Dimensions subject to change without notice. Contact factory for updates: (909) 948-8878

Safety Warning

FOR YOUR SAFETY, READ AND FOLLOW ALL INSTRUCTIONS TO PREVENT ELECTRIC SHOCK OR FIRE

- **INSTALLATION REQUIRES KNOWLEDGE OF LIGHTING LUMINAIRE ELECTRICAL SYSTEMS**
Contact qualified electrician prior to installation.
- **DISCONNECT POWER BEFORE INSTALLATION**
- **DO NOT ALTER PRE-EXISTING HOLES OR DRILL NEW HOLES**
- **CHECK FOR INCLOSED WIRING COMPONENTS PRIOR TO DRILLING**
Luminaire wiring, ballasts, power supplies or other electrical parts may be damaged.
- **USE ONLY ON COMPATIBLE LUMINAIRES**
Installation requires specific dimensions and construction features.
- **PROTECT WIRING FROM ABRASION**
Do not expose wiring to sharp objects or edges of sheet metal.

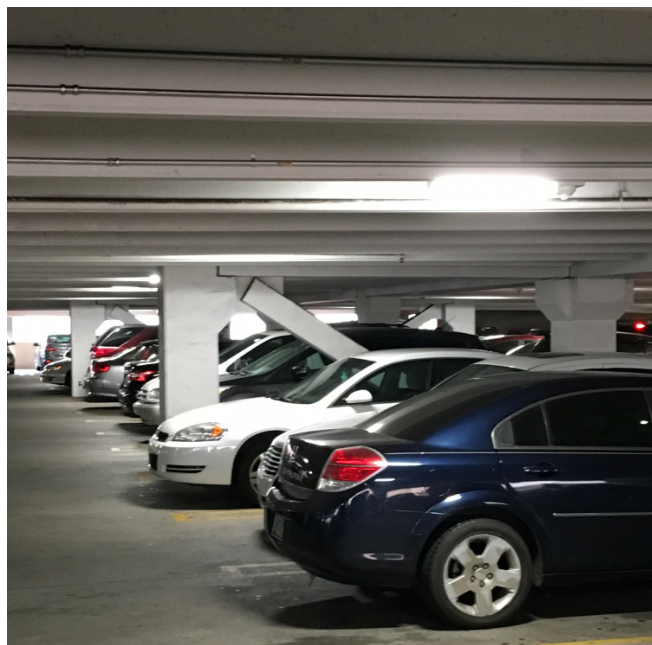
Installation Instructions

1. Disconnect Power to the circuit supplying power to the fixture
2. Removed the existing lamps and fixture
3. Disassemble new fixture to allow access to the LED Driver
4. Run existing power supply wires into fixture through fixture knock-out or end plug on fixture
5. Mount the fixture to surface, or hang fixture with appropriate fixture mounting hardware or install fixture in T-bar Ceiling (Be sure to follow local building codes for the appropriate fixture installation methods.)
6. Connect power supply wires to supplied wire disconnect to provide power to fixture
7. Re-assemble fixture
8. Re-connect power and check installation

Technical Information

Available CCT	30K, 35K, 40K & 50K
CRI	83
Delivered Lumens	See Performance Data
Dimming	0-10V Dimming Standard
Efficacy	106+ LPW
Input Frequency	50/60 Hz
L70	> 198,000
Light Source	LED Board
Power Factor	> 0.95
Power Source	LED High Efficiency Power Supply
Rated Wattage	See Performance Data
Temperature Rating	-40°C – 50°C Ambient
THD	< 20%
Voltage	120V to 277V

Application Photo



Performance Data

					5000K	
Lens Type	Form Factor	Catalog No.	Rated Wattage (W)	Tested Wattage (W)	Delivered Lumens (lm)	Efficacy (lm/W)
Frosted Lens	2'	L6024-16W-50K	16	17	2,000	108
		L6024-27W-50K	27	27	2,859	106
	4'	L6048-31W-50K	31	32	4,100	108
		L6048-52W-50K	52	53	5,300	106
	8'	L6096-62W-50K	62	64	8,200	106
		L6096-104W-50K	104	106	10,600	110

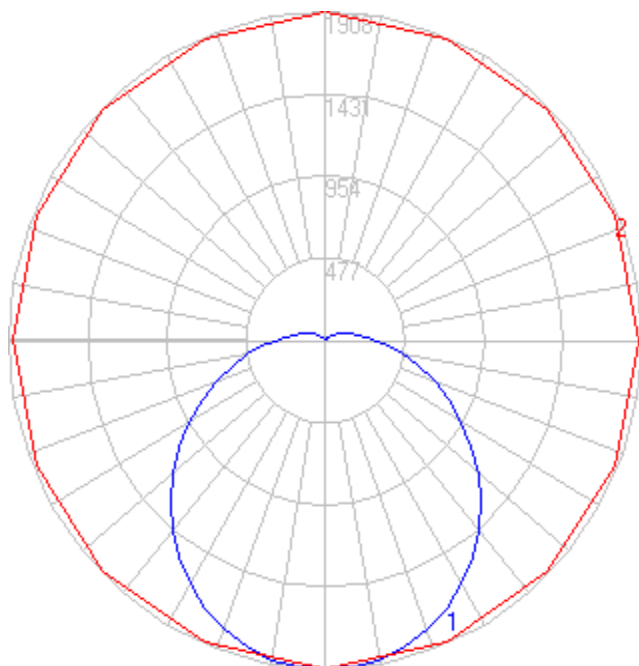
Photometric Data

L6048-52W-50K Tested in accordance to IESNA LM-79

Zonal Lumen Summary

Zone	Lumens	% Luminaire
0-10	179.83	3.07%
10-20	511.85	8.73%
20-30	766.21	13.07%
30-40	908.54	15.49%
40-50	926.89	15.81%
50-60	833.84	14.22%
60-70	664.55	11.33%
70-80	467.30	7.97%
80-90	285.67	4.87%
90-100	159.42	2.72%
100-110	85.21	1.45%
110-120	42.97	0.73%
120-130	20.13	0.34%
130-140	8.17	0.14%
140-150	3.30	0.06%
150-160	0.38	0.01%

Polar Graph



Physical Characteristics

Dimensions

Version	H	L	W
2FT	5.0"	24.0"	6.0"
2FT w/ Extended Body	5.0"	30.0"	6.0"
4FT	5.0"	48.0"	6.0"
4FT w/ Extended Body	5.0"	54.0"	6.0"
8FT	5.0"	96.0"	6.0"
8FT w/ Extended Body	5.0"	102.0"	6.0"

Extendend Body Version



Weights

Version	Weight
2FT	5lbs
2FT w/ Extended Body	6lbs
4FT	11lbs
4FT w/ Extended Body	12lbs
8FT	20lbs
8FT w/ Extended Body	21lbs