

Project	
Type	
Notes	
Catalog No.	
Date	

L7600 Series LED Vaportite (L-Bar)

The L7600 LED Vaportite is designed to minimize horizontal surfaces and latch pockets prone to retaining debris. Perfect for applications requiring wash-ability and hose down.



Specifications

Applications

- Food Processing
- Cold Storage/ Freezers
- Car Washes
- Canopies
- Parking Garages
- Laundry Facilities
- Distribution Centers
- Stairwells
- Corridors

Construction

- Linear ribbed high impact acrylic diffuser
- Poured in place gasket and cam latches seal enclosures from most hostile environments
- Standard with stainless steel mounting brackets

Mounting

- Various mounting options available, including suspension, pendant, and surface mount. Mounting brackets included. Cord and plug options offered.

Options

- Sensors can be integrated for additional energy savings
- UV Stabilized polycarbonate lens
- Emergency battery back-up
- Deep Lens
- 1/2" & 3/4" Pendant Mount hubs w/ access hole
- Bail hook
- Stainless steel latches

Warranty

- Five-year warranty.* Terms and Conditions Apply. See warranty documentation for more information.

Certification

- ETL Compliant
- Adheres to LM79, LM80 and TM21 industry standards
- DesignLights Consortium® (DLC) qualified
- Lighting Facts



Catalog Ordering Example

L7648-4254-H1

L76				
-----	--	--	--	--

Family Type	Length in Inches/Wattage	Color Temp	Transmission/ # of Bars	Options
L76	24 - 212 (2 Foot, 12 Watts/1 -2FT Bar)	3 (3000 Kelvin Temp)	S1 (Standard 80%/ 1 Bar)	OSW (Wet Location Occupancy Sensor)
	24 - 225 (2 Foot, 25 Watts/1 -2FT Bar)	35 (3500 Kelvin Temp)	S2 (Standard 80%/ 2 Bars)	OSM (IRTEC LMS109 Microwave Occ Sensor w/ Photocell)
	48 - 212 (4 Foot, 12 Watts/1 -2FT Bar)	4 (4000 Kelvin Temp)	H1 (High 94%/ 1 Bar)	OSDW (Wet Location Occupancy Sensor w/ Daylight)
	48 - 225 (4 Foot, 25 Watts/1 -2FT Bar)	5 (5000 Kelvin Temp)	H2 (High 94%/ 2 Bars)	PRGOS-LO (IRTEC LOD509 Bi-Level Occ Sensor w/ Photocell)
	48 - 425 (4 Foot, 25 Watts/1 -4FT Bar)			PRGOS-LR (IRTEC LRD509 Programmable Occ Sensor w/ Remote Control)
	48 - 450 (4 Foot, 50 Watts/1 -4FT Bar)			PRGOS-LM (IRTEC LMD109 Microwave Bi-Level Occ Sensor w/ Photocell)
	96 - 225 (8 Foot, 25 Watts/1 -2FT Bar)			EM7W (Emergency Battery Backup, 7 Watts, ~600 lms)*
	96 - 425 (8 Foot, 25 Watts/1 -4FT Bar)			EM10W (Emergency Battery Backup, 10 Watts, ~800 lms)*
	96 - 450 (8 Foot, 50 Watts/1 -4FT Bar)			EM10WT20 (Emergency Battery Backup, 10 Watts, Constant Power, Title 20 Compliant, ~1625 lms)*
				EM15WT20Emergency Battery Backup, 15 Watts, Constant Power, Title 20 Compliant, ~2400 lms)*
				480SD (480 Step-Down)
				PLG (6' SJT Cord & Plug)
				10GL (10' Loop w/ Gripple Hanging Kit)
				HUB12 (1/2" Pendant Mount HUB w/ access hole)
				HUB34 (3/4" Pendant Mount HUB w/ access hole)
				DL (Deep Lens)
				PC (Polycarbonate Lens)

* Lumens will change based on fixture selection

Specifications and Dimensions subject to change without notice. Contact factory for updates: (909) 948-8878

Safety Warning

FOR YOUR SAFETY, READ AND FOLLOW ALL INSTRUCTIONS TO PREVENT ELECTRIC SHOCK OR FIRE

- **INSTALLATION REQUIRES KNOWLEDGE OF LIGHTING LUMINAIRE ELECTRICAL SYSTEMS-** Contact qualified electrician prior to installation.
- **DISCONNECT POWER BEFORE INSTALLATION**
- **DO NOT ALTER PRE-EXISTING HOLES OR DRILL NEW HOLES**
- **CHECK FOR INCLOSED WIRING COMPONENTS PRIOR TO DRILLING-** Luminaire wiring, ballasts, power supplies or other electrical parts may be damaged.
- **USE ONLY ON COMPATIBLE LUMINAIRES-** Installation requires specific dimensions and construction features.
- **PROTECT WIRING FROM ABRASION-** Do not expose wiring to sharp objects or edges of sheet metal.

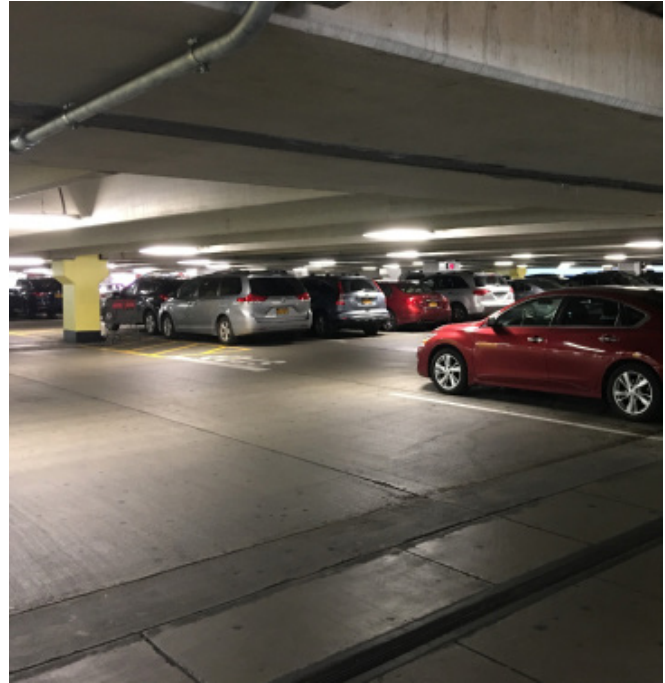
Installation Instructions

1. Disconnect Power to the circuit supplying power to the fixture
2. Removed the existing lamps and fixture
3. Disassemble new fixture to allow access to the LED Driver
4. Run existing power supply wires into fixture through fixture knock-out or end plug on fixture
5. Mount the fixture to surface, or hang fixture with appropriate fixture mounting hardware (Be sure to follow local building codes for the appropriate fixture installation methods.)
6. Connect power supply wires to supplied wire disconnect to provide power to fixture
7. Re-assemble fixture
8. Re-connect power and check installation

Technical Information

Available CCT	30K, 35K, 40K & 50K
CRI	84
Delivered Lumens	See Performance Data
Dimming	0-10V Dimming Standard
Efficacy	106+ LPW
Input Frequency	50/60 Hz
L70	398,000
IP Ratings	IP65, IP66 & IP67
Light Source	LED Light Bar
Power Factor	> 0.95
Power Source	LED High Efficiency Power Supply
Rated Wattage	See Performance Data
Temperature Rating	-40°C – 40°C Ambient
THD	< 20%
Voltage	120V to 277V

Application Photo



Performance Data

Lens Type	Form Factor	Catalog No.	Rated Wattage (W)	Tested Wattage (W)	5000K	
					Delivered Lumens (lm)	Efficacy (lm/W)
Clear Lens	2'	L7624-2125-H1	12	14.5	1,563	108
		L7624-2255-H1	25	28.5	3,020	106
	4'	L7648-2125-H1	12	14.5	1,563	108
		L7648-2255-H1	25	28.5	3,020	106
		L7648-4255-H1	25	28.5	3,165	111
		L7648-4505-H1	50	55	5,849	106
	8'	L7696-2255-H2	50	57	6,040	106
		L7696-4255-H2	50	27	6,330	111
		L7696-4505-H2	100	110	11,698	106

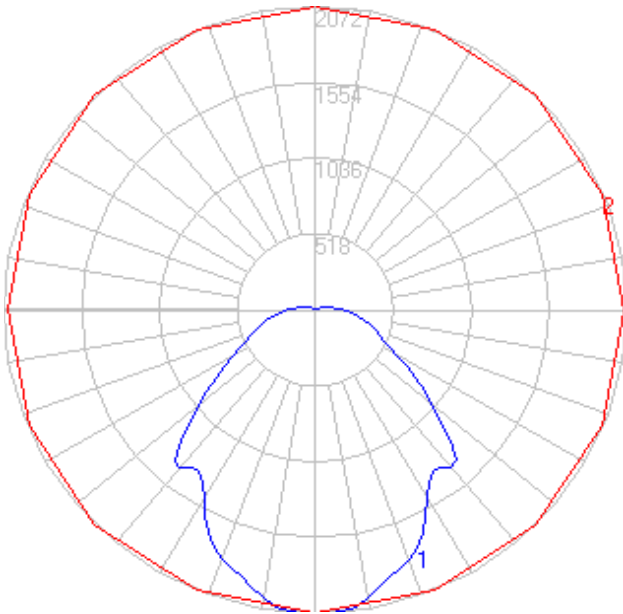
Photometric Data

L7648-4505-H1 Tested in accordance to IESNA LM-79

Zonal Lumen Summary

Zone	Lumens	% Luminaire
0-10	194.13	3.54%
10-20	538.38	9.81%
20-30	766.92	13.97%
30-40	922.35	16.81%
40-50	907.97	16.54%
50-60	736.05	13.41%
60-70	546.09	9.95%
70-80	372.71	6.79%
80-90	241.54	4.40%
90-100	139.77	2.55%
100-110	74.37	1.35%
110-120	34.38	0.63%
120-130	12.48	0.23%
130-140	1.49	0.03%

Polar Graph

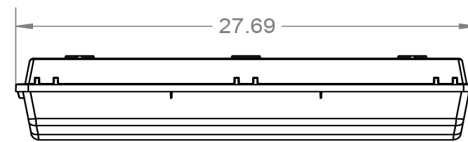


Physical Characteristics

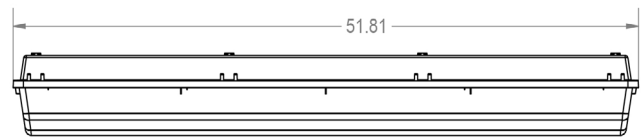
Dimensions

Version	H	L	W
2FT	4.21"	27.69"	6.77"
4FT	4.36"	51.81"	6.77"
8FT	4.36"	100.00"	6.77"

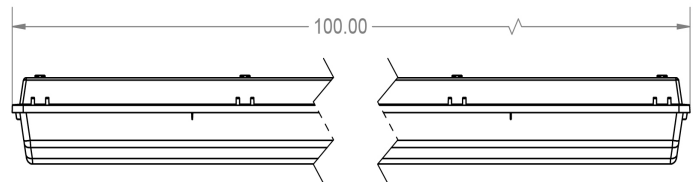
2FT Version



4FT Version



8FT Version



Weights

Version	Weight
2FT	6lbs
4FT	12lbs
8FT	23lbs