



Gotham Architectural Downlighting
LED Downlights



4" Incito®
Downlight

Solid-State Lighting
(US and International Patents Pending)

FEATURES

INTENDED USE

Achieve the lowest installed power density and operating costs while achieving every layer of light via the optimized general illumination distributions from the EVO family, and the high centerbeam accent layers from the highly flexible Incito family. The EVO and Incito families maintain consistent luminous apertures, dimming characteristics, and color quality to ensure the blending of families in common spaces renders an unparallelled, tailored visual experience.

OPTICAL SYSTEM

- Eleven optimized distribution patterns allow designers to achieve tailored effects.
- Self-flanged semi-specular or matte-diffuse, metal-clad lower reflector utilized in combination with a highly transmissive lens.
- Patented Bounding Ray™ Optical Principle design (U.S. Patent No. 5,800,050) provides 45° cut-off to source and source image for a smooth and continuous transition from lensed source to the top of the reflector down to the bottom of the reflector.

MECHANICAL SYSTEM

- Light engine and driver are accessible from above or below ceiling.
- 16-gauge black painted steel mounting frame with mounting bars included. Post-installation adjustment possible from above or below ceiling.
- Galvanized steel junction box with hinged access covers and spring latch. Three combination 1/2"-3/4" and one 1/2" knockout for straight-through conduit runs. Capacity: 8 (4 in, 4 out) No. 12 AWG conductors rated for 90°C.
- Accommodates up to 1 1/2"-thick ceilings.

- Flangeless trim option includes proprietary Gotham mud ring enabling seamless integration into drywall applications. Mud ring ships separately.

ELECTRICAL SYSTEM

- Solid-state LED light engine available in 2700 K, 3000 K, 3500 K or 4000 K color temperatures. CRI: 85 typical
- 0-10V driver available with 10% dimming level.
- 0-10V driver available with 1% dimming level.
- eldoLED SOLOdrive 0-10V driver available with <1% dimming level.
- eldoLED SOLOdrive DALI driver available with <1% dimming level.
- eldoLED POWERdrive DMX with RDM (remote device management) available with <1% dimming level.
- >70% lumen maintenance at 60,000 hours.
- Tested in accordance with LM-79 and LM-80 standards.
- Emergency battery pack with remote test switch available.

LISTINGS

- Fixtures are CSA certified to meet US and Canadian standards; wet location, covered ceiling.
- IC-rated up to 1000 lumens

WARRANTY

- 5-year limited warranty. Complete warranty terms located at: www.acuitybrands.com/CustomerResources/Terms_and_conditions.aspx

Note: Actual performance may differ as a result of end user environment and application. All values are design or typical values, measured under laboratory conditions at 25 °C.

ORDERING INFORMATION



A+ Capable options indicated by this color background.



Design2Ship Quick Ship Program: Options in green text qualify for Design2Ship — 5 business days from order entry to ship. Refer to Design2Ship Brochure for complete program details. **Maximum Order Quantity: 50 units.**

EXAMPLE: ICO 30/20 4AR LD 20D 120 EZB

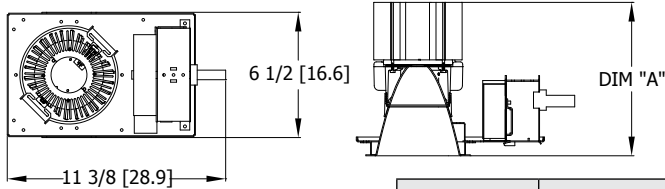
Series	Color temperature	Nominal delivered lumen values				Aperture/Trim color		Trim Style		Finish		Beam			
ICO	27/ 2700 K	05	500 lumens	25	2500 lumens	4AR	Clear	(blank)	Self-flanged	LSS	Semi-specular	10D ²	10° beam angle	40D	40° beam angle
	30/ 3000 K	07	750 lumens	30	3000 lumens	4PR	Pewter	FL	Flangeless	LD	Matte diffuse	15D	15° beam angle	45D	45° beam angle
	35/ 3500 K	10	1000 lumens	35	3500 lumens	4WTR	Wheat					20D	20° beam angle	50D	50° beam angle
	40/ 4000 K	12	1250 lumens	40	4000 lumens	4WR ¹	White					25D	25° beam angle	60D	60° beam angle
		15	1500 lumens	45	4500 lumens	4BR ¹	Black					30D	30° beam angle	65D	65° beam angle
		20	2000 lumens									35D	35° beam angle		

Voltage	Driver	Options			
120	GZ10 0-10V driver dims to 10%	SF	Single fuse. Specify voltage.	NPP16D ⁹	nLight® network power/relay pack with 0-10V dimming for non-elidoLED drivers (GZ10, GZ1).
277	GZ1 0-10V driver dims to 1%	TRW ⁶	White painted flange	NPP16DER ⁹	nLight® network power/relay pack with 0-10V dimming for non-elidoLED drivers (GZ10, GZ1). ER controls fixtures on emergency circuit.
347 ³	EZ10 elidoLED 0-10V ECODrive. Linear dimming to 10% min.	TRBL ⁷	Black painted flange		
	EZ1 elidoLED 0-10V ECODrive. Linear dimming to 1% min.	ELR ⁸	Emergency battery pack with remote test switch, CEC compliant	NPS80EZ ⁹	nLight® dimming pack controls 0-10V elidoLED drivers (EZ.).
	EZB elidoLED 0-10V SOLOdrive. Logarithmic dimming to <1%.			NPS80EZER ⁹	nLight® dimming pack controls 0-10V elidoLED drivers (EZ.). ER controls fixtures on emergency circuit.
	EDAB ⁴ elidoLED SOLOdrive DALI. Logarithmic dimming to <1%.	CP	Chicago plenum. Specify 120V or 277V	LTVI ¹⁰	Lutron ECOSystem interface for compatibility with 0-10V EZ10, EZ1 or EZB.
	EDXB ⁵ elidoLED POWERdrive DMX with RDM (remote device management). Square Law dimming to <1%. Includes termination resistor. Refer to DMXR Manual .	CR190	High CRI (90+)	RRL	RELOC®-ready luminaire connectors enable a simple and consistent factory installed option across all ABL luminaire brands. Refer to RRL for complete nomenclature.

ACCESSORIES order as separate catalog numbers (shipped separately)

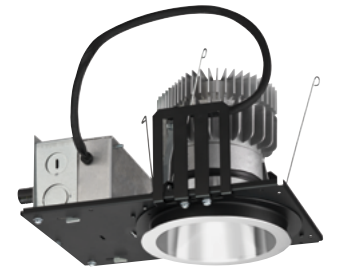
OPTC4 Additional optics for field installation. Specify desired optical distribution from available options in "Beam" option column in the ordering tree. i.e. OPTC4 20D.

All dimensions are inches (centimeters) unless otherwise noted.



Aperture: 4-5/16 [11]
Ceiling Opening: 5-1/8 [13] self-flanged
Overlap Trim: 5-7/16 [13.8] self-flanged
4-5/8 [11.7] flangeless

LUMENS	A
Up to 1000	6 [15.2]
Up to 1500	7 [17.8]
Above 1500	8 [20.3]

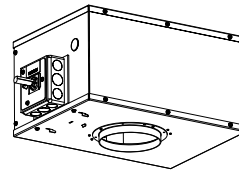
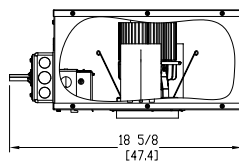
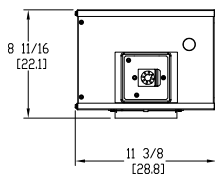


Incito 4" Round Downlight - Flanged



Incito 4" Round Downlight - Flangeless (FL)

CHICAGO (CP) PLENUM CONSTRUCTION



MARKED SPACINGS IN INCHES - 25°C AMBIENT			
Lumen Package	Fixture Center to Center MIN	Fixture Center to Building Member MIN	Space above Fixture
3500-4500 (GZ1/GZ10 Only)	24	12	0.5

WATTAGE CONSUMPTION MATRIX	
NOMINAL DELIVERED LUMENS	Wattage
4500	50 W
4000	43 W
3500	36 W
3000	39 W
2500	33 W
2000	23 W
1500	17 W
1250	12 W
1000	10 W
750	7 W
500	6 W

nLight® Control Accessories:			
Order as separate catalog number. Visit www.acuitybrands.com/products/controls/nlight for complete listing of nLight controls.			
WallPod stations	Model number	Occupancy sensors	Model number
On/Off	nPODM [color]	Small motion 360°, ceiling (PIR / dual tech)	nCM 9 / nCM PDT 9
On/Off & Raise/Lower	nPODM DX [color]	Large motion 360°, ceiling (PIR / dual tech)	nCM 10 / nCM PDT 10
Graphic Touchscreen	nPOD GFX [color]	Wide view (PIR / dual tech)	nWV 16 / nWV PDT 16
Photocell controls	Model number	Wall Switch w/ Raise/Lower (PIR / dual tech)	nWSX LV DX / nWSX PDT LV DX
On/Off & Dimming	nCM ADCX	Cat-5 cables (plenum rated)	Model number
		10', CAT5 10FT	CAT5 10FT J1
		15', CAT5 15FT	CAT5 15FT J1

EL/ELR AVAILABILITY / COMPATIBILITY – Initial Lumens				
LED			Initial Lumens	
Product	Lumens	Watts	EL/ELR	ELRHL
ICO 4"	500-4500	6-50	530	N/A

ORDERING NOTES

- Not available with finishes.
- Only available 1500lm and below.
- Not available with ELR emergency option.
- Maximum lumen 4000.
- 1500-4000 lumen only.
- Not required for WR reflector. Not applicable with FL option.
- Not required for BR reflector. Not applicable with FL option.
- Must specify 120 or 277V. Not available with 347V. Above ceiling access required for use with ELR option
- Specify voltage. For use with generator supply EM power. Will require an emergency hot feed and normal hot feed
- Shipped installed from the factory.

CONSULT WWW.GOTHAMLIGHTING.COM FOR PHOTOMETRY

Choose Wall Controls.

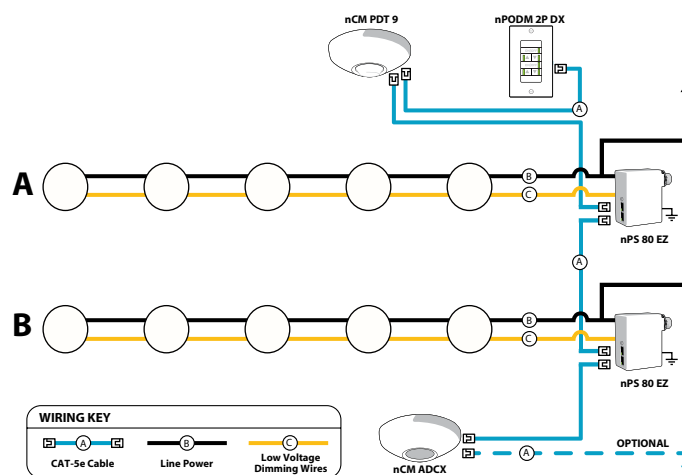
nLIGHT offers multiple styles of wall controls – each with varying features and user experience.



Push-Button WallPod
Traditional tactile buttons and LED user feedback



Graphic WallPod
Full color touch screen provides a sophisticated look and feel



EXAMPLE

Group Fixture Control*

*Application diagram applies for fixtures with eldoLED drivers only.

nPS 80 EZ Dimming/Control Pack (qty 2 required)

nPODM 2P DX Dual On/Off/Dim Push-Button WallPod

nCM ADCX Daylight Sensor with Automatic Dimming Control

nCM PDT 9 Dual Technology Occupancy Sensor

Description: This design provides a dual on/off/dim wall station that enables manual control of the fixtures in Row A and Row B separately. Additionally, a daylight harvesting sensor is provided so the lights in row B can be configured to dim automatically when daylight is available. An occupancy sensor turns off all lights when the space is vacant.

A+ Capable Luminaire

This item is an A+ capable luminaire, which has been designed and tested to provide consistent color appearance and out-of-the-box control compatibility with simple commissioning.

- All configurations of this luminaire meet the Acuity Brands' specification for chromatic consistency
- This luminaire is part of an A+ Certified solution for nLight® control networks when ordered with drivers marked by a **shaded background***
- This luminaire is part of an A+ Certified solution for nLight control networks, providing advanced control functionality at the luminaire level, when selection includes driver and control options marked by a **shaded background***

To learn more about A+, visit www.acuitybrands.com/aplus.

*See ordering tree for details