

Recessed LED Downlights with WarmDim[®]

Ultra-efficient, high-performance LED downlights offering the warmth and ambience of incandescent dimming





The Juno® WarmDim® LED Family



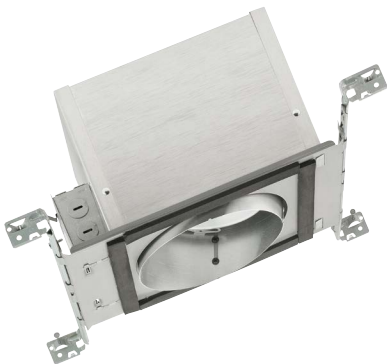
600 and 900 Lumen LED Downlights

Juno LED IC-rated downlights with the WarmDim feature are available with 600 or 900 brilliant lumens, and new construction or remodel housings. Aperture sizes include 4-, 5-, and 6-inch diameters and are offered with open, lensed, and wall wash trims. These ultra-efficient downlights consume as little as 12 watts, producing industry-leading efficacies for their category.



600 Lumen Retrofit LED Trim Modules

Juno LED retrofit modules with the WarmDim feature produce 600 brilliant lumens and are available with downlight or adjustable eyeball trims. This is the fast, affordable way to update existing fixtures to ultra-efficient, high-performance LED illumination. They are compatible with most 6-inch medium base housings and offer an all-in-one design that is the model of installation simplicity.



900 Lumen Slope Ceiling LED Downlights

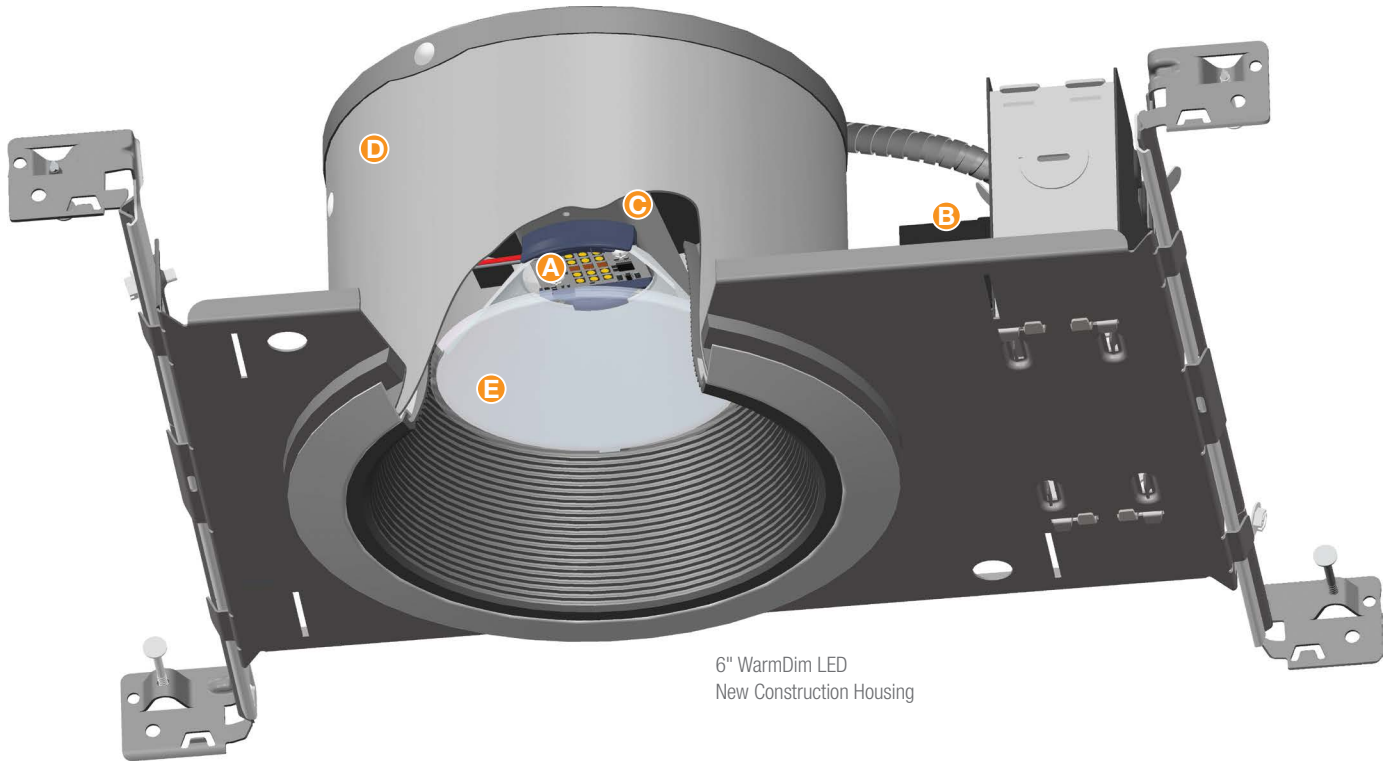
Juno slope ceiling LED downlights with the WarmDim feature are designed specifically for sloped ceiling applications. They are available in either standard or super slope configurations and produce a brilliant 900 lumens to accommodate higher ceilings. These ultra-efficient, IC-rated, 6-inch LED luminaires are the perfect complement to today's contemporary decors.



Juno® WarmDim® LED Downlights



Juno LED IC-rated downlights with WarmDim – an exclusive Mainstream Dynamic technology – deliver ultra-efficient, high-performance illumination while capturing the warm glow and ambiance of incandescent dimming. Juno WarmDim 600 lumen and 900 lumen downlights are offered in 4-, 5- and 6- inch apertures. The 600 lumen downlights consume just 12 watts, while the 900 lumen downlights consume between 15 and 18 watts. All WarmDim downlights use far less energy than any comparable light sources and last dramatically longer.



6" WarmDim LED
New Construction Housing

Optional Medium Flood
Optic available for 5"
and 6" downlights.



- A.** Proprietary patented WarmDim LED light engine features micro-processor controlled dimming that replicates the warmth of incandescent dimming. Dims from 3000K CCT at full lumen output to a warm 2000K while maintaining 90 minimum CRI throughout the dimming range (Patent US 8,710,754).
- B.** Dedicated 120-volt LED driver is compatible with readily available incandescent, magnetic low-voltage, and electronic low-voltage dimmers.
- C.** Effective thermal management is achieved by integrating the light engine into a thermally conductive housing that provides uninterrupted heat transfer for remarkable LED longevity. Service life is rated at 50,000 hours with 70% lumen maintenance and no perceptible color shifts.
- D.** Low-profile housings fit easily within 2 x 6 joists to accommodate shallow installations. New construction housings are supplied with Juno Real Nail 3® bar hangers; an integral T-bar notch secures housings to suspended ceiling grids without the need for clips. Remodel housings also available.
- E.** High-performance optic system produces uniform light distribution and reduces glare. The reflector and high-transmission diffusing lens are computer optimized for each aperture size, and the lens conceals the LED array, providing the aesthetic of a deeply regressed PAR lamp.



Juno® 4" WarmDim® Downlights (New Construction)



Dedicated LED, Air-Loc® sealed new construction housing with patented WarmDim®. LED color temperature warms while dimming to emulate the dimming performance of traditional incandescent light sources. Double wall, shallow housing construction allows for fit in 2 x 6 construction. Can be completely covered with insulation. Fully sealed housing stops infiltration and exfiltration of air, reducing heating and air cooling costs without the use of additional gaskets. LED housing is designed to provide 50,000 hours of life and is compatible with many standard Juno trims. 5 year limited warranty on LED components.

New Construction

12¼" L x 6¾" W x 6" H
Ceiling cutout: 4½"

Example: IC1LED WD G4N 09LM 30K 90CRI 120 FRPC

| Series | Dynamic Feature | Gen | Lumens | CCT | GRI | Voltage/Driver |
|-----------------------------|-----------------|-----|----------------------------------|-----------|-------|---|
| IC1LED | WD | G4N | 06LM | 30K 3000K | 90CRI | 120 FRPC |
| 4" New Construction Housing | WarmDim® | | 600 Lumens 09LM 900 Lumens | | | 120V Only; Forward Phase/ ELV Dimming |

Juno 4" WarmDim Downlights (Remodel)



Dedicated LED, Air-Loc® remodel housing with patented WarmDim®. LED color temperature warms while dimming to emulate the dimming performance of traditional incandescent light sources. Shallow housing allows for fit in 2 x 6 construction. IC remodel housing for remodel application where back side of ceiling is not accessible. Installs through an opening in the ceiling from below. Secured in place by factory installed remodel springs. Can be completely covered with insulation. LED housing is designed to provide 50,000 hours of life and is compatible with many standard Juno trims. 5 year limited warranty on LED components.

New Construction

12½" L x 4¾" W x 4¾" H
Ceiling cutout: 4¾"

Example: IC1RLED WD G4N 06LM 30K 90CRI 120 FRPC

| Series | Dynamic Feature | Gen | Lumens | CCT | GRI | Voltage/Driver |
|--------------------|-----------------|-----|----------------------------------|-----------|-------|---|
| IC1RLED | WD | G4N | 06LM | 30K 3000K | 90CRI | 120 FRPC |
| 4" Remodel Housing | WarmDim® | | 600 Lumens 09LM 900 Lumens | | | 120V Only; Forward Phase/ ELV Dimming |

¹ Not ENERGY STAR® certified.

ENERGY STAR® and T24 certification is dependent on trim finish. See housing spec sheet for specific information for each trim.

Juno 4" LED Downlight Trims

Open Trims



Pinhole with Integral Shield
13 WH White
2" Aperture



Baffle
14 BWH¹ Black Baffle
14 BSC¹ Black Baffle
14 BABZ¹ Black Baffle
14 BBL¹ Black Baffle
14 WWH White Baffle
3⅜" Aperture



Cone
17 CWH Clear Alzak®
17 GWH Gold Alzak®
17 BWH Black Alzak®
17 PTSC Pewter Alzak®
17 WWH Gloss White
17 HZWH Haze
17 WHZWH Wheat Haze
17 WHZABZ Wheat Haze
3⅜" Aperture



Beveled Cylinder
4103 FROSTWH
4103 FROSTSC
3" Aperture



Beveled Cone
4104 HZSC Haze
4104 WHZABZ Wheat Haze
3⅜" Aperture



Cylinder
4150 MESHSC
2½" Aperture

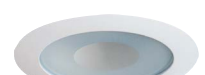
Lensed



Wall Wash
39 CWH Clear Alzak®
39 HZWH Haze
39 WWH Gloss White
39 WHZWH Wheat Haze



Drop Opal
11 WH White



Frosted Lens with Clear Center
12 WWH
12 WSC
12 WABZ

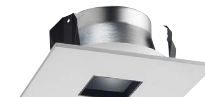


Beveled Dome - Shower
4101 ABZ
4101 SC
4101 WH



Beveled Shower
4102 ABZ
4102 SC
4102 WH

Square Trims



13SQ WH White Trim



17SQ HZWH Haze, White Trim
17SQ WWH White, White Trim
17SQ BWH Black, White Trim
17SQ WHZWH Wheat Haze



Frosted Lens with Clear Center
12SQ WWH White Trim

Juno 5" WarmDim Downlights (New Construction)



Dedicated LED, Air-Loc® sealed new construction housing with patented WarmDim®. LED color temperature warms while dimming to emulate the dimming performance of traditional incandescent light sources. Shallow housing allows for fit in 2 x 6 construction. Can be completely covered with insulation. Fully sealed housing stops infiltration and exfiltration of air, reducing heating and air cooling costs without the use of additional gaskets. LED housing is designed to provide 50,000 hours of life and is compatible with many standard Juno trims. 5 year limited warranty on LED components.

New Construction

15½" L x 9½" W x 4¾" H
Ceiling cutout: 5½"

Example: IC20LED WD G4N 06LM 30K 90CRI 120 FRPC

| Series | Dynamic Feature | Gen | Lumens | CCT | CRI | Voltage/Driver |
|--|-----------------|-----|--------------------|-----------|-------|---|
| IC20LED 5" New Construction Housing | WD WarmDim® | G4N | 06LM 600 Lumens | 30K 3000K | 90CRI | 120 FRPC 120V Only; Forward Phase/ ELV Dimming |
| | | G4 | 09LM 900 Lumens | | | |

Juno 5" WarmDim Downlights (Remodel)



Dedicated LED, Air-Loc® remodel housing with integral patented WarmDim®. LED color temperature warms while dimming to emulate the dimming performance of traditional incandescent light sources. Shallow housing allows for fit in 2 x 6 construction. IC remodel housing for remodel application where back side of ceiling is not accessible. Installs through an opening in the ceiling from below. Secured in place by factory installed remodel springs. Can be completely covered with insulation. When used with supplied ALG kit, stops infiltration and exfiltration of air, reducing heating and air cooling costs. LED housing is designed to provide 50,000 hours of life and is compatible with many standard Juno trims. 5 year limited warranty on LED components.

New Construction

13½" L x 5½" W x 4¾" H
Ceiling cutout: 5½"

Example: IC20RLED WD G4 09LM 30K 90CRI 120 FRPC

| Series | Dynamic Feature | Gen | Lumens | CCT | CRI | Voltage/Driver |
|-----------------------------------|-----------------|-----|--------------------|-----------|-------|---|
| IC20RLED 5" Remodel Housing | WD WarmDim® | G4N | 06LM 600 Lumens | 30K 3000K | 90CRI | 120 FRPC 120V Only; Forward Phase/ ELV Dimming |
| | | G4 | 09LM 900 Lumens | | | |

Accessories

| Catalog No. | Description |
|----------------|--------------------------|
| LEDOPTICG3 MFL | Medium Flood Optic (50°) |

¹ Not ENERGY STAR® certified.

ENERGY STAR® and T24 certification is dependent on trim finish. See housing spec sheet for specific information for each trim.

Juno 5" LED Downlight Trims

Downlights



Baffle

205 WWH White Baffle
205 BWH¹ Black Baffle
205 BSC¹ Black Baffle
205 BABZ¹ Black Baffle
4¾" Aperture



Cone

204 CWH Clear Alzak®
204 GWH Gold Alzak®
204 BWH Black Alzak®
204 PTSC Pewter Alzak®
204 WWH Gloss White
204 HZWH Haze
204 WHZWH Wheat Haze
204 WHZABZ Wheat Haze
4¾" Aperture

Wall Wash



Wall Wash

213G3 WWH White
213G3 BWH Black

Lensed



Flat Glass Shower Trim*

210N ABZ
210N SC
210N WH



Frosted Lens with Clear Center*

212N ABZ
212N SC
212N WH



White Baffle, Regressed Frosted Dome Lens*

2130 WWH White
2130 BWH Black



Beveled Frame, Frosted Dome Lens*

5101 ABZ
5101 SC
5101 WH

* Do not use reflector shipped with trim for LED housing. Discard or recycle reflector.

Juno 6" WarmDim Downlights (New Construction)



Dedicated LED, Air-Loc® sealed new construction housing with patented WarmDim®. LED color temperature warms while dimming to emulate the dimming performance of traditional incandescent light sources. Shallow housing allows for fit in 2 x 6 construction. Can be completely covered with insulation. Fully sealed housing stops infiltration and exfiltration of air, reducing heating and air cooling costs without the use of additional gaskets. LED housing is designed to provide 50,000 hours of life and is compatible with many standard Juno trims. 5 year limited warranty on LED components.

New Construction

15¼" L x 9¼" W x 5½" H
Ceiling cutout: 6¾"

Example: IC22LED WD G4N 06LM 30K 90CRI 120 FRPC

| Series | Dynamic Feature | Gen | Lumens | CCT | CRI | Voltage/Driver |
|--|-----------------|-----|--------------------|-----------|-------|---|
| IC22LED 6" New Construction Housing | WD WarmDim® | G4N | 06LM 600 Lumens | 30K 3000K | 90CRI | 120 FRPC 120V Only; Forward Phase/ ELV Dimming |
| | | G4 | 09LM 900 Lumens | | | |

Juno 6" WarmDim Downlights (Remodel)



Dedicated LED, Air-Loc® remodel housing with integral patented WarmDim®. LED color temperature warms while dimming to emulate the dimming performance of traditional incandescent light sources. Shallow housing allows for fit in 2 x 6 construction. IC remodel housing for remodel application where back side of ceiling is not accessible. Installs through an opening in the ceiling from below. Secured in place by factory installed remodel springs. Can be completely covered with insulation. When used with supplied ALG kit, stops infiltration and exfiltration of air, reducing heating and air cooling costs. LED housing is designed to provide 50,000 hours of life and is compatible with many standard Juno trims. 5 year limited warranty on LED components.

New Construction

14½" L x 7¼" W x 5½" H
Ceiling cutout: 6¾"

Example: IC22RLED WD G4 09LM 30K 90CRI 120 FRPC

| Series | Dynamic Feature | Gen | Lumens | CCT | CRI | Voltage/Driver |
|-----------------------------------|-----------------|-----|--------------------|-----------|-------|---|
| IC22RLED 6" Remodel Housing | WD WarmDim® | G4N | 06LM 600 Lumens | 30K 3000K | 90CRI | 120 FRPC 120V Only; Forward Phase/ ELV Dimming |
| | | G4 | 09LM 900 Lumens | | | |

Accessories

| Catalog No. | Description |
|---------------|--------------------------|
| LEDOPTIG3 MFL | Medium Flood Optic (50°) |

¹ Not ENERGY STAR® certified.

ENERGY STAR® and T24 certification is dependent on trim finish. See housing spec sheet for specific information for each trim.

Juno 6" LED Downlight Trims

Open Trims



Conical

24 WWH White Baffle
24 BWH¹ Black Baffle
24 BSC¹ Black Baffle
24 BABZ¹ Black Baffle
24 BBL¹ Black Baffle

5¾" Aperture



Conical Cone

27 CWH Clear Alzak®
27 GWH Gold Alzak®
27 BWH Black Alzak®
27 PTSC Pewter Alzak®
27 WWH Gloss White
27 HZWH Haze
27 WHZWH Wheat Haze
27 WHZABZ Wheat Haze

5¾" Aperture



Octagonal 9024 WWH

5¾" Aperture



Luminous Disc (Frosted) 9324 SC

3¾" Aperture



Chrome Band 9524 SC

5¾" Aperture



Luminous Collar (Frosted) 9702

6¾" Aperture

Wall Wash Trims



Wall Wash

262G3 WWH White Baffle
262G3 BWH Black Baffle

Lensed Trims



Albalite

20 PW Shower/Closet Light
20 WH



Drop Opal

21 PW Shower/Closet Light
21 WH



Fresnel

22 WH



Frosted Lens*

239 WH



Frosted Lens with Clear Center

242 ABZ
242 SC
242 WH



Decorative Swirled Etched Opal Glass*

243 WH



White Baffle, Regressed Frosted Dome Lens*

2330W WH White
2330B WH Black



Beveled Frame, Frosted Dome Lens*

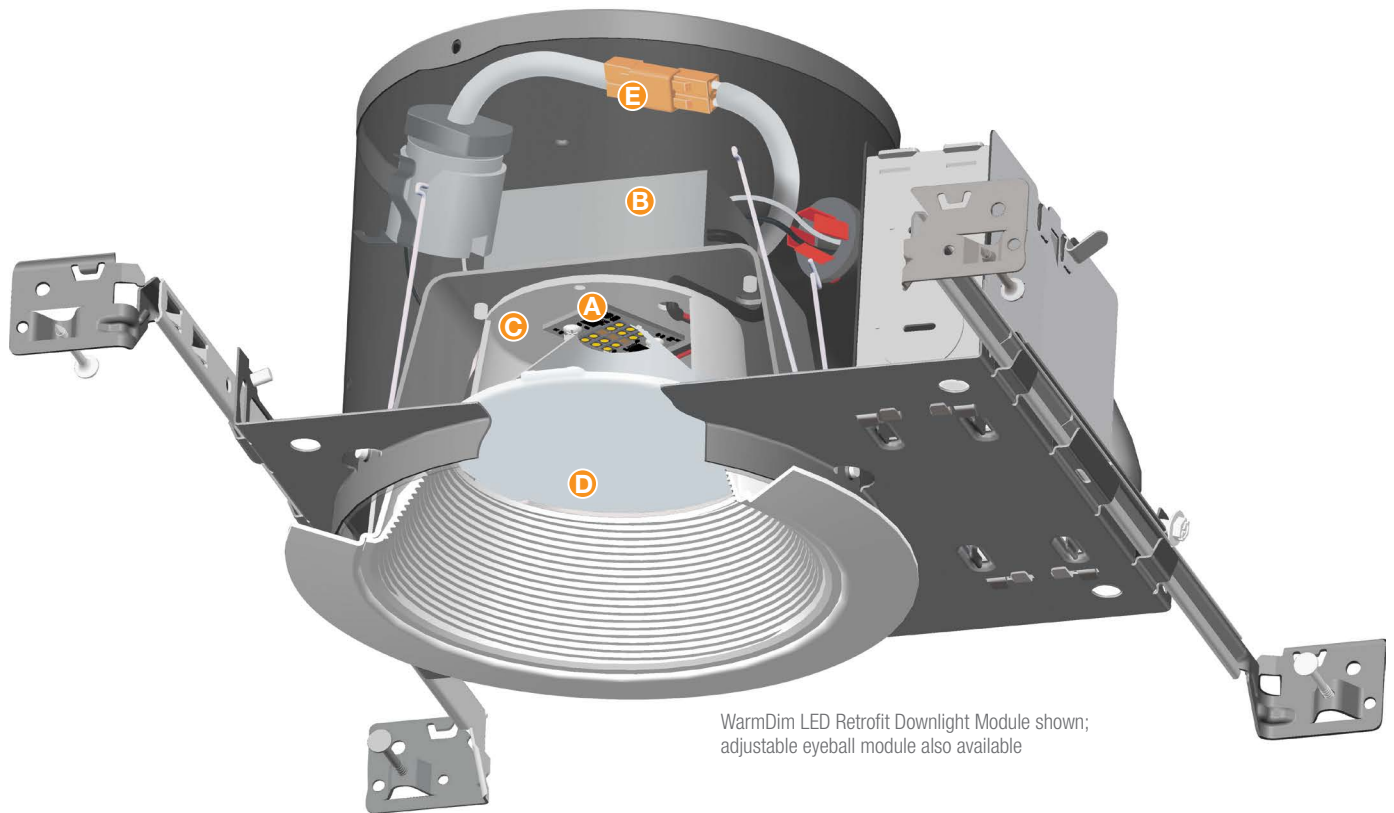
6101 ABZ
6101 SC
6101 WH

* Do not use reflector shipped with trim for LED housing. Discard or recycle reflector.

Juno® WarmDim® LED Retrofit Trim Modules



With Juno WarmDim LED retrofit modules, you can easily and economically upgrade existing 6-inch, medium-base, recessed fixtures to ultra-efficient LED illumination. In the process, you will also be upgrading to the ultimate in dimming technology. The exclusive Juno WarmDim feature warms LED color temperature while dimming to capture the warmth and ambiance previously achieved only with incandescent dimming. Available in both downlight and adjustable eyeball styles, these IC-rated LED trim modules produce 600 brilliant lumens from just 12 watts.



WarmDim LED Retrofit Downlight Module shown; adjustable eyeball module also available

All-in-one design of downlight and eyeball retrofit trim modules incorporate the LED light engine, driver, heat sink, and trim in a single unit.

- A.** Proprietary patented WarmDim LED light engine features micro-processor controlled dimming that replicates the warmth of incandescent dimming. Dims from 3000K CCT at full lumen output to a warm 2000K while maintaining 90 minimum CRI throughout the range. (Patent US 8,710,754)
- B.** Dedicated 120-volt LED driver is compatible with most incandescent, magnetic, and electronic low-voltage wall box dimmers.
- C.** Effective thermal management is achieved by integrating the LED array with a one-piece high purity aluminum, thermally conductive trim to provide uninterrupted heat transfer. Ensures long life of the LEDs even when covered with insulation. At the end of their 50,000 hour rated life, the LEDs can be expected to produce 70% of their initial light output with no perceptible changes in color.
- D.** High-efficiency optic system features a computer-optimized reflector and high-transmission diffusing lens that provides uniform light distribution and effective glare control while concealing the LED array.
- E.** Whip adapter with screw base and quick connect plug speeds installation into 6-inch, medium-base, recessed housings.



Juno 6" WarmDim Retrofit LED Downlight Trim



All-in-one 6" LED Retrofit downlight trim with patented WarmDim® installs into existing 6" incandescent housings with medium base sockets or Juno IC23 LEDT24 and IC23R LEDT24 quick connect recessed housings. LED color temperature warms while dimming to emulate the dimming performance of traditional incandescent light sources. May be used in housings completely covered with insulation. Selection of interchangeable baffle and cone trim inserts can be changed in the field to customize the look of the product. Dimmable with most standard incandescent or electronic low voltage dimmers. Designed to provide 50,000 hours of life. 5 year limited warranty on LED components.

Example:
J6RL WD G4N DB 06LM 30K 90CRI 120 FRPC BWH

| Series | Dynamic Feature | Gen | Trim Style | Lumens | CCT | CRI | Voltage/Driver | Trim Finish |
|------------------------------------|-----------------|-----|------------------------|--------------------|--------------|-------|--|---|
| J6RL 6" Retrofit Downlight Trim | WD WarmDim® | G4N | DB Downlight Baffle | 06LM 600 Lumens | 30K 3000K | 90CRI | 120 FRPC 120V Only; Forward Phase/ELV Dimming | WWH White Baffle BWH Black Baffle |
| | | | DC Downlight Cone | 06LM 600 Lumens | 30K 3000K | 90CRI | 120 FRPC 120V Only; Forward Phase/ELV Dimming | CWH Clear Cone WWH White Cone HZWH Haze Cone WHZWH Wheat Haze Cone |

Juno 6" WarmDim Retrofit LED Eyeball Trim Module



All-in-one 6" LED Retrofit eyeball trim with patented WarmDim® installs into existing 6" incandescent housings with medium base sockets or Juno IC23 LEDT24 and IC23R LEDT24 quick connect recessed housings. LED color temperature warms while dimming to emulate the dimming performance of traditional incandescent light sources. May be used in housings completely covered with insulation. Adjustable eyeball design allows for 30° vertical adjustment. Field installable medium flood optic accessory available. Dimmable with most standard incandescent or electronic low voltage dimmers. Designed to provide 50,000 hours of life. 5 year limited warranty on LED components.

Example:
J6RLE WD G4N DB 06LM 30K 90CRI 120 FRPC WH

| Series | Dynamic Feature | Gen | Lumens | CCT | CRI | Voltage/Driver | Trim Finish |
|-----------------------------------|-----------------|-----|--------------------|--------------|-------|--|-------------|
| J6RLE 6" Retrofit Eyeball Trim | WD WarmDim® | G4N | 06LM 600 Lumens | 30K 3000K | 90CRI | 120 FRPC 120V Only; Forward Phase/ELV Dimming | WH White |

Compatible Housings

The J6RL WD and J6RLE WD retrofit modules are compatible with most 6" recessed housings measuring at least 5-1/4" high with an inside diameter between 6" and 6-3/4". Removal of the housing socket plate or socket mounting bracket may be required in order for the trim to fit properly. If housing does not have torsion spring brackets, the V6RLTRB accessory is required. Compatible housings include, but not limited to:

- Juno housings:** IC2 and TC2 Series, IC22 Series, IC23 Series, IC21 Series
- VuLite housings:** V6IC and V6TC Series
- Lithonia housings:** L7X and LC6 Series
- Halo housings:** H7 Series
- Thomas housings:** PS1 and PS3 Series
- Capri housings:** QL1 Series

Juno Downlight Trim Inserts

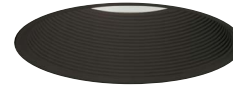
Interchangeable trim inserts for WarmDim LED retrofit downlight modules are offered in six beautiful finishes.



J6RLTRIM DB WWH
White Baffle



J6RLTRIM DC WWH
White Cone



J6RLTRIM DB BWH
Black Baffle



J6RLTRIM DC HZWH
Haze Cone



J6RLTRIM DC CWH
Clear Cone



J6RLTRIM DC WHZWH
Wheat Haze Cone

Accessories

| Catalog No. | Description |
|----------------|--|
| LEDOPTICG3 MFL | Medium Flood Optic (50°) (J6RLE only) |
| V6RLTRB | Torsion receiver bracket kit to install Juno Retrofit LED Trim Modules into housings that do not have torsion receiver brackets. |

Juno Dedicated LED Housings



Fixture Style: IC23 LEDT24
Description: 6" IC New Construction



Fixture Style: IC23R LEDT24
Description: 6" IC Remodel

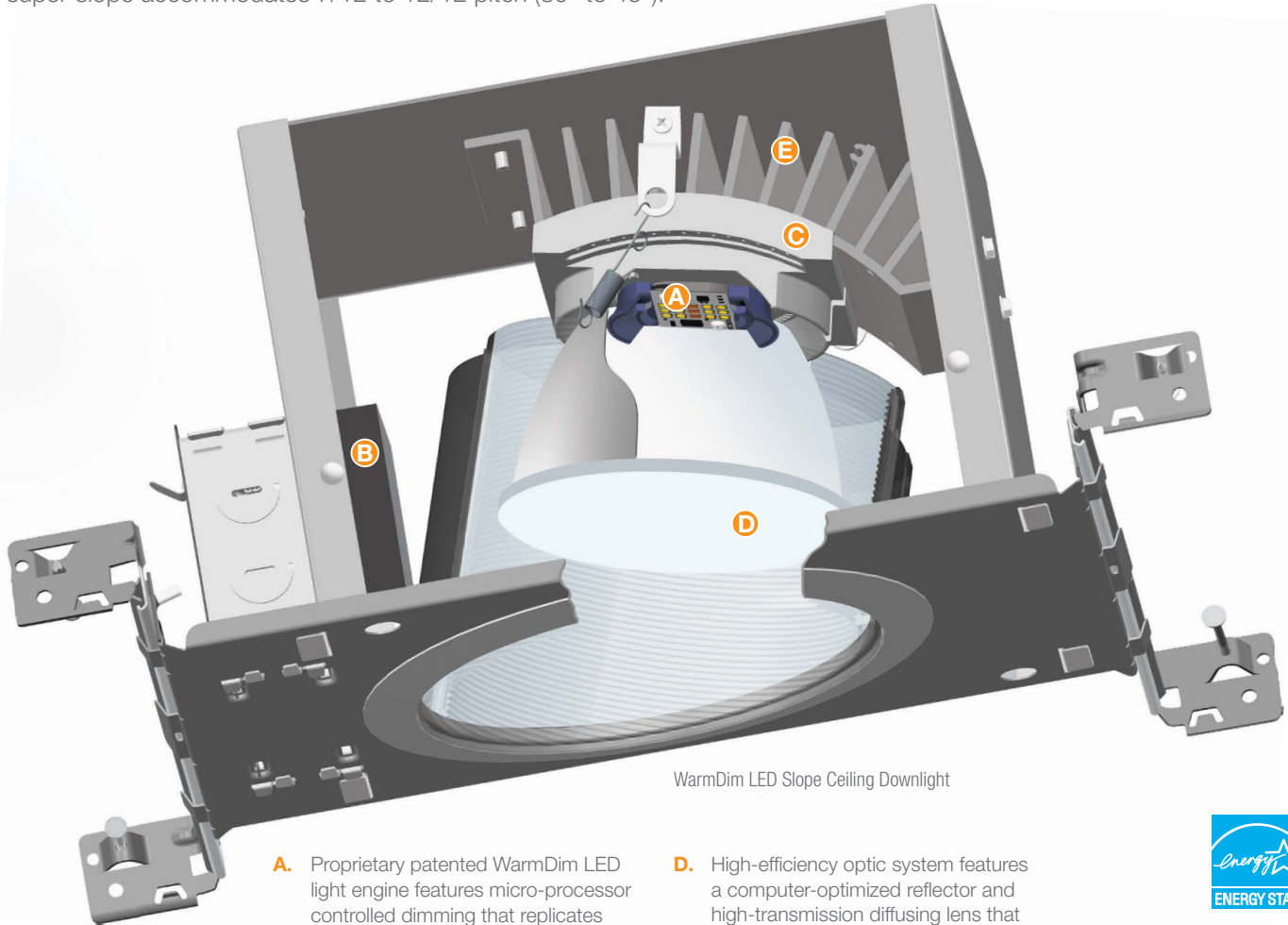


ENERGY STAR® and T24 certification is dependent on trim finish. See housing spec sheet for specific information for each trim.

Juno® WarmDim® LED Slope Ceiling Downlights



Juno slope and super-slope LED downlights were the industry's first recessed LED luminaires designed specifically for slope ceiling installations. Now, these 6-inch, IC-rated downlights are available with Juno WarmDim, providing the warmth and atmosphere of incandescent dimming while offering the energy efficiency and longevity of LED fixtures. They produce a brilliant 900 lumens from just 18 watts and are offered with open or lensed trims for new construction applications. Juno standard slope LED downlights accommodate ceilings with 2/12 to 6/12 pitch (9° to 27°); super-slope accommodates 7/12 to 12/12 pitch (30° to 45°).



WarmDim LED Slope Ceiling Downlight

- A.** Proprietary patented WarmDim LED light engine features micro-processor controlled dimming that replicates the warmth of incandescent dimming. Dims from 3000K CCT at full lumen output to a warm 2000K while maintaining 90 minimum CRI throughout the range. (Patent US 8,710,754)
- B.** Dedicated 120-volt LED driver is compatible with readily available incandescent, magnetic low-voltage, and electronic low-voltage dimmers.
- C.** Adjustable slider plate enables the LED light engine and reflector to be positioned perpendicular to the floor throughout the pitch range and includes 1/4-inch adjustment indicators for consistent fixture-to- fixture alignment.
- D.** High-efficiency optic system features a computer-optimized reflector and high-transmission diffusing lens that conceals the LEDs and produces uniform aperture luminance. Specifically designed for slope applications, the reflector provides optimum performance and obscures housing internals regardless of pitch angle.
- E.** Superior thermal management is achieved by integrating the extruded aluminum heat sink and cast aluminum slider plate directly into the housing, assuring remarkable LED longevity. Service life is rated at 50,000 hours with 70% lumen maintenance.



Juno 6" WarmDim Standard Slope Ceiling LED 2/12 to 6/12 Pitch (9° to 27°)



Dedicated LED, Air-Loc® sealed slope ceiling new construction housing with patented WarmDim®. LED color temperature warms while dimming to emulate the dimming performance of traditional incandescent light sources. IC rated construction housing can be completely covered with insulation. Fully sealed housing stops infiltration and exfiltration of air, reducing heating and air cooling costs without the use of additional gaskets. LED housing is designed to provide 50,000 hours of life and is compatible with standard Juno trims. 5 year limited warranty on LED components.

Example: IC926LED WD G4 09LM 30K 90CRI 120 FRPC

| Series | Dynamic Feature | Gen | Lumens | CCT | CRI | Voltage/Driver |
|--|-----------------------|-----------|---------------------------|------------------|--------------|--|
| IC926LED 6" Standard Slope Ceiling | WD WarmDim® | G4 | 09LM 900 Lumens | 30K 3000K | 90CRI | 120 FRPC 120V Only; Forward Phase/ ELV Dimming |

Juno 6" WarmDim Super Slope Ceiling LED 7/12 to 12/12 Pitch (30° to 45°)



Dedicated LED, Air-Loc® sealed super slope ceiling new construction housing with patented WarmDim®. LED color temperature warms while dimming to emulate the dimming performance of traditional incandescent light sources. IC rated construction housing can be completely covered with insulation. Fully sealed housing stops infiltration and exfiltration of air, reducing heating and air cooling costs without the use of additional gaskets. LED housing is designed to provide 50,000 hours of life and is compatible with standard Juno trims. 5 year limited warranty on LED components.

Example: IC928LED WD G4 09LM 30K 90CRI 120 FRPC

| Series | Dynamic Feature | Gen | Lumens | CCT | CRI | Voltage/Driver |
|---|-----------------------|-----------|---------------------------|------------------|--------------|--|
| IC928LED 6" Super Slope Ceiling | WD WarmDim® | G4 | 09LM 900 Lumens | 30K 3000K | 90CRI | 120 FRPC 120V Only; Forward Phase/ ELV Dimming |

Juno Slope Ceiling Trims

Open and lensed trims feature shadow-free, knife-edge rings that blend unobtrusively with sloped ceilings. Drawn from a selection of existing Juno trims, this collection offers an extensive variety of styles, colors, and finishes.

Standard Slope Open Trims



Baffle

- 614 BWH¹ Black Baffle
- 614 BSC¹ Black Baffle
- 614 BABZ¹ Black Baffle
- 614 BBL¹ Black Baffle
- 614 WWH White Baffle

Super Slope Open Trims



Baffle

- 604 BWH¹ Black Baffle
- 604 BSC¹ Black Baffle
- 604 BABZ¹ Black Baffle
- 604 BBL¹ Black Baffle
- 604 WWH White Baffle



Cone

- 620 CWH Clear Alzak®
- 620 BWH Black Alzak®
- 620 HZWH Haze
- 620 HZSC Haze
- 620 WWH White
- 620 WHZWH Wheat Haze
- 620 WHZABZ Wheat Haze



Cone

- 602 CWH Clear Alzak®
- 602 BWH¹ Black Alzak®
- 602 HZWH Haze
- 602 HZSC Haze
- 602 WWH White
- 602 WHZWH Wheat Haze
- 602 WHZABZ Wheat Haze

Lensed Trims



- Baffle, Regressed Frosted Dome Lens**
- 6330 WWH White



- Baffle, Regressed Frosted Dome Lens**
- 6033 WWH White

¹ Not ENERGY STAR® certified.

ENERGY STAR® and T24 certification is dependent on trim finish. See housing spec sheet for specific information for each trim.

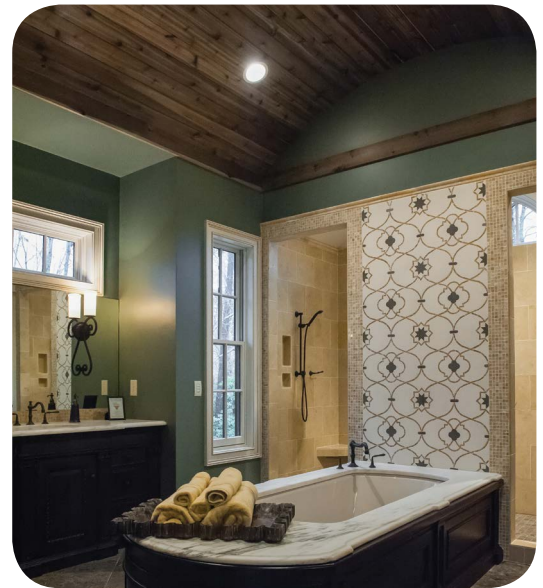
Juno® WarmDim® LED Downlights



Setting the mood with exceptionally accurate, high-performance illumination

Juno WarmDim exclusive Mainstream Dynamic technology (Patent US 8,710,754) has taken LED downlighting in an exciting new direction. This patented innovation warms LED color temperatures during dimming, recreating the warm glow of incandescent dimming, while offering extraordinary energy efficiency and service life.

The WarmDim feature is available throughout an expanded range of Juno high-performance LED downlights. These fixtures feature exceptionally accurate color rendering in excess of 90 CRI. They are also incredibly efficient, consuming as little as 20% of the energy of incandescents and about half the energy of CFLs. Rated service life is a remarkable 50,000 hours at 70% lumen maintenance.



A technological breakthrough

Juno WarmDim brings atmosphere and romance to the world of LED lighting. Unlike traditional LED dimming, WarmDim downlights warm as they dim, creating an ambiance previously exclusive to incandescent dimming. The proprietary micro-processor controlled light engine dims continuously from 3000K CCT at full luminance, down to the warm glow of 2000K. From residential dining rooms to hospitality guest rooms, now you can match the mood to every occasion.

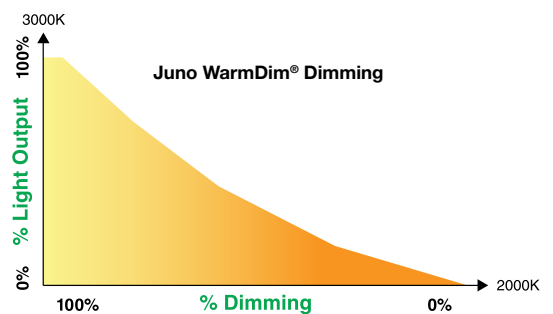
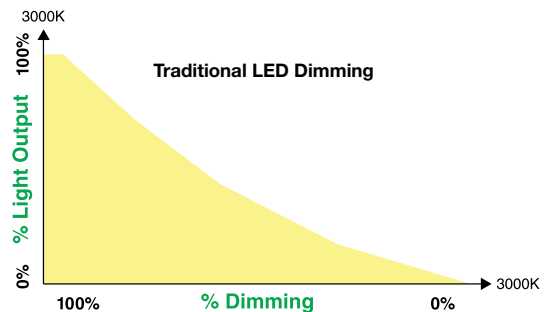


Photo Credits:
Cover: Residential kitchen, St. Charles, Illinois
Pages 1 and back cover: Fairview Builders, LLC Custom Home Builder, Model Home – Cliffs at Mountain Park, Marietta, South Carolina



©2017 Acuity Brands Lighting, Inc. The marks appearing in this catalog are trademarks of Acuity Brands Lighting, Inc. Products shown in this brochure may be covered by U.S. and international patents and patents pending. Specifications subject to change without notice. Printed in the U.S.A.

