



TRAC-LITES

120V PAR16/MR16 GU10 SERIES

R711, R712, R713, R714, R715

R716, R717 and R718

Project: _____

Fixture Type: _____

Location: _____

Contact/Phone: _____

PRODUCT DESCRIPTION

Lampholder Ceramic base twist-and-lock GU10 socket with nickel plated contacts.

Aiming 90° vertical aiming capability and 358° rotation.

Adapter Copper alloy contacts provide precise spring action • True, positive electrical ground • On/off switch included • Patented embossed polarity arrows on bottom of adapter • Spring-loaded locking latch with embossed polarity arrows secures trac light to trac • Compatible with both Trac-Lites and Trac-Master Trac • "Pull-up" contact to up position for use on Trac-Master two-circuit trac.

Labels UL/CUL listed.

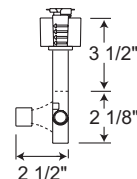
Product specifications subject to change without notice.



Line Voltage GU10 Open Back Spotlight

Construction Drawn steel housing with die-formed steel yoke.

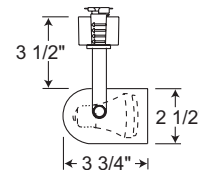
Catalog Number	Finish	Lamp
R711 WH	White	120V, 35-50W PAR16/MR16 GU10
R711 BL	Black	120V, 35-50W PAR16/MR16 GU10



Line Voltage GU10 Round Back Cylinder

Construction Drawn steel housing with die-formed steel yoke.

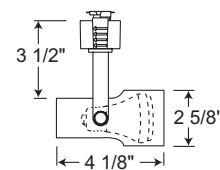
Catalog Number	Finish	Lamp
R712 WH	White with Black Bezel	120V, 35-50W PAR16/MR16 GU10
R712 BL	Black with Black Bezel	120V, 35-50W PAR16/MR16 GU10



Line Voltage GU10 Step Cylinder

Construction Drawn steel housing with die-formed steel yoke.

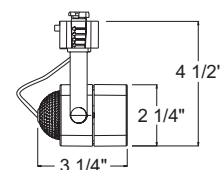
Catalog Number	Finish	Lamp
R713 WH	White with Black Bezel	120V, 35-50W PAR16/MR16 GU10
R713 BL	Black with Black Bezel	120V, 35-50W PAR16/MR16 GU10



Line Voltage GU10 Cast Cube

Construction Drawn steel housing with die-formed steel yoke.

Catalog Number	Finish	Lamp
R714 WH	White	120V, 35-50W PAR16/MR16 GU10
R714 BL	Black	120V, 35-50W PAR16/MR16 GU10
R714 SC	Satin Chrome	120V, 35-50W PAR16/MR16 GU10
R714 BZ	Painted Bronze	120V, 35-50W PAR16/MR16 GU10



TRAC-LITES

120V PAR16/MR16 GU10 SERIES

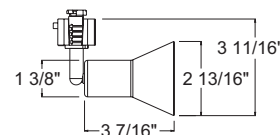
R711, R712, R713, R714, R715

R716, R717 and R718

Line Voltage GU10 Flare

Construction Drawn steel housing with machined steel stem.

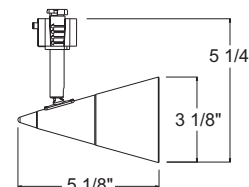
Catalog Number	Finish	Lamp
R715 WH	White	120V, 35-50W PAR16/MR16 GU10
R715 BL	Black	120V, 35-50W PAR16/MR16 GU10
R715 SC	Satin Chrome	120V, 35-50W PAR16/MR16 GU10
R715 BZ	Painted Bronze	120V, 35-50W PAR16/MR16 GU10



Line Voltage GU10 Glass Cone

Construction Machined aluminum rear housing with machined steel stem
 • Semi-opaque conical front glass accent in complementary colors.

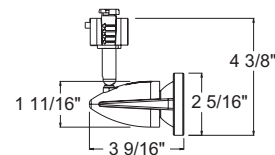
Catalog Number	Housing Finish	Glass Color	Lamp
R716 WH OPLG	White	Opal Frost	120V, 35-50W PAR16/MR16 GU10
R716 BL OPLG	Black	Opal Frost	120V, 35-50W PAR16/MR16 GU10
R716 SC OPLG	Satin Chrome	Opal Frost	120V, 35-50W PAR16/MR16 GU10
R716 BZ OPLG	Painted Bronze	Amber Frost	120V, 35-50W PAR16/MR16 GU10



Line Voltage GU10 Odyssey

Construction Die cast aluminum housing with machined steel stem.

Catalog Number	Finish	Lamp
R717 WH	White	120V, 35-50W PAR16/MR16 GU10
R717 BL	Black	120V, 35-50W PAR16/MR16 GU10
R717 SC	Satin Chrome	120V, 35-50W PAR16/MR16 GU10
R717 BZ	Painted Bronze	120V, 35-50W PAR16/MR16 GU10



Line Voltage GU10 Bell

Construction Die cast aluminum housing and swivel arm • Deep lamp regression and spun aluminum step baffle to reduce glare.

Catalog Number	Finish	Lamp
R718 WH	White	120V, 35-50W PAR16/MR16 GU10
R718 BL	Black	120V, 35-50W PAR16/MR16 GU10
R718 SC	Satin Chrome	120V, 35-50W PAR16/MR16 GU10
R718 BZ	Oil Bronze	120V, 35-50W PAR16/MR16 GU10

